

i-Blue737A⁺ Quick Installation Guide

Thank you for purchasing i-Blue737A⁺ 66-Channel Bluetooth GPS Receiver. It supports ultra high sensitivity GPS navigation and supports Smart Power control for power saving.

Main features:

- Semi indoor fixed
- AGPS available
- 66 channels Bluetooth GPS
- Smart Power Save Mechanism
- Fuzzy Auto On/Off

A. Standard Package

GPS Unit i-Blue737A⁺

(1) + Lithium-ION Rechargeable Battery (2) + Cigarette Adapter (3) + USB to mini USB cable



B. Appearance

1. Power jack (mini USB type)
2. Power switch
3. Battery status LED (Red/Green)
4. Bluetooth status LED (Blue)
5. GPS status LED (Orange)
6. Internal antenna



C. Charging your battery

For the first time using the i-Blue737A⁺, please charge battery until it is fully charged. Take the power cable and connect it to the power jack (mini USB type) and recharge through car cigarette adaptor. This will begin to charge the battery. Charging time is 3 hours typically.

- When the Power LED is Red, battery power is low status. Please recharge.
- When the Power LED is Green, the battery is under charging mode.
- When the Power LED is off, the battery is fully charged.



D. Start to use

D-1 Fully charge the battery when using at the first time

A fully charged battery can last up to 32 hours continuously operation.

D-2 Activate the Bluetooth function in your PDA/Smart phone or PC

Before activating the Bluetooth function in your PDA/PC, please switch on i-Blue737A⁺ Receiver for pairing and check if your device is equipped with Bluetooth function. If not, you may need to acquire an optional CF/SD Bluetooth card or Bluetooth dongle.

NOTE: The pairing procedure is required to execute in the first time only. And the pass code is "0000" if required.

D-3 Automatically create a shortcut in Bluetooth Manager window

After the pairing complete, the system will then find a quick connect device "BTGPS" in Bluetooth Manager. In further use, you just need to click it to connect to this Bluetooth GPS Receiver.

D-4 Check the Serial Port in Bluetooth Setting

After complete pairing with the Receiver, please click "Serial Port" to confirm the assigned COM port. If you use PDA/PC to pair the GPS Receiver, please check "Outbound COM port".

D-5 Set correct Serial Port in your map software

Activate your navigation software and make sure to select the correct "Serial Port".

NOTE: In the map software such as TomTom, you might need to change preference and set "Other Bluetooth GPS" according to PDA/phone model. In some case please consult map software company to vary the setting if you have issue on positioning.

D-6 Switch off the Bluetooth function

Switch off GPS function in your PDA/Smart phone/PC, then the Bluetooth connection will be disconnected automatically. Then put i-Blue737A⁺ power switch to "OFF" position.

E. Function of Smart Power Control (Power saving mode)

i-Blue737A⁺ supports **Smart Power control** (Power saving mode). It can automatically enter sleeping mode after the Bluetooth connectivity is turned off, so the Blue LED will turn to flash every 5 seconds. Thus you can always power it on with very low power consumption.

Under power saving mode, when detecting Bluetooth is being connected, i-Blue737A⁺ will wake up itself and the blue LED will turn to flash every 2 second and GPS Orange LED will be also on.

F. OTHERS

F-1 LED Indicators

	LED Status	Symbol	Flash	ON	OFF
1	Power (Red/Green)		Low Power (Red);	Recharging (Green)	Full of charge
2	Bluetooth (Blue)		Flash per 2 sec.: Bluetooth connected and transmitting Mode Flash per 5 sec.: Power saving mode	Not connected	GPS not powered
3	GPS (Orange)		GPS position is fixed, Navigation	Detecting Satellite, GPS position not fix	GPS not powered

F-2 Manufacturing Setting

Protocol: NMEA 0183 (V3.01) -GGA, GSA, GSV, RMC (default)

Baud Rate: 115,200 bps; Datum: WGS-84

F-3 GPS Features

66-channel Bluetooth GPS Receiver with super high sensitivity at -165dBm

Frequency: L1, 1575.42 MHz; C/A Code: 1.023 MHz chip rate

Acquisition time (averaged): Hot start 1.5 sec. / Warm start 34 sec. / Cold start 35 sec. / With AGPS <15sec

F-4 Bluetooth Features

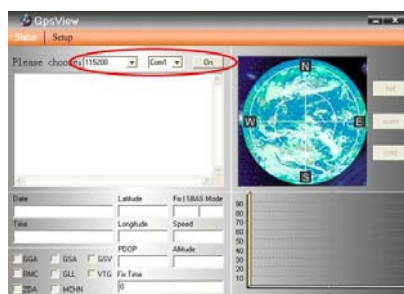
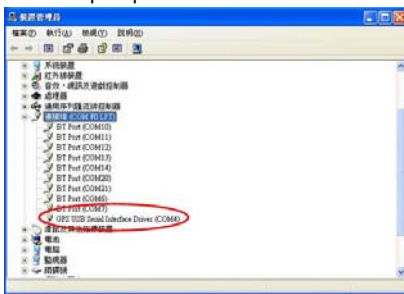
Bluetooth Version: V1.2 / SPP profile

Class 2 over 10 meters in open space

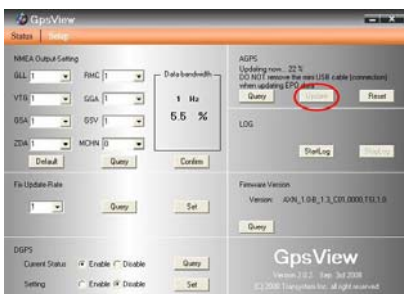
F-5 AGPS

Before you use GpsView software, you need to install i-Blue737A⁺ driver.

1. Start→Control Panel→System→Hardware→Device Management→Connector (COM and LPT) Check Com port position.
2. Open GpsView.exe→Check Baud Rate and Com port→click On
3. Choice Setup



4. Choice Update.
5. When Updating now...100%, click Enter complete.



NOTE: When you use AGPS function, we suggest you GpsView to download the AGPS data via USB cable

F-6 Overall Features

Low power consumption, built-in rechargeable 850mAh Lithium battery (up to 32 hrs after fully charged)

Size: 46.5W x72.2L x20H mm / Weight: 64.7g (battery included)

G. Trouble Shooting

Problems	Reasons	Methods
No position output but timer is counting	Weak or no GPS signal can be received at the place of i-Blue737A ⁺	Find an open space for your i-Blue737A ⁺
Execute fail	Bluetooth function unstable	Re-Start PDA or PC or re-install software
Can not turn on the COM port	Install i-Blue737A ⁺ incompletely or the COM port of the device is being used	Install i-Blue737A ⁺ completely or stop other device that is being used.
Can not find out i-Blue737A ⁺	Poor connection	Re-Start PDA or PC and re-install software.
No Signal	No action for few minutes may cause the Pocket PC enter power saving mode. It may close the COM port at the same time.	Close the application and execute it again to re-open the COM port.
No Signal	Weak or no GPS signal when using i-Blue737A ⁺ indoor	Go outdoors to improve the poor GPS signal.

FCC Notices

This device complies with Part 15 of the FCC Rules. Operation is subject to the following two conditions: (1) this device may not cause harmful interference, and (2) this device must accept any interference received, including interference that may cause undesired operation.

CAUTION: Change or modification not expressly approved by the party responsible for compliance could void the user's authority to operate this equipment.

This equipment has been tested and found to comply with the limits for a Class B digital device, pursuant to Part 15 of the FCC Rules. These limits are designed to provide reasonable protection against harmful interference in a residential installation. This equipment generates, uses and can radiate radio frequency energy and, if not installed and used in accordance with the instructions, may cause harmful interference to radio communications. However, there is no guarantee that interference will not occur in a particular installation. If this equipment does cause harmful interference to radio or television reception, which can be determined by turning the equipment off and on, the user is encouraged to try to correct the interference by one or more of the following measures:

- Reorient or relocate the receiving antenna.
- Increase the separation between the equipment and receiver.
- Connect the equipment into an outlet on a circuit different from that to which the receiver is connected.
- Consult the dealer or an experienced radio/TV technician for help.

CAUTION:

Any changes or modifications not expressly approved by the grantee of this device could void the user's authority to operate the equipment.

RF exposure warning:

The equipment complies with FCC RF exposure limits set forth for an uncontrolled environment. The equipment must not be co-located or operating in conjunction with any other antenna or transmitter.

This equipment also should be installed and operated with minimum distance 20cm between the radiator & your body.