

APPENDIX-PHOTOGRAPHS OF EUT CONSTRUCTIONAL DETAILS

Model: Celestial

Photo 1

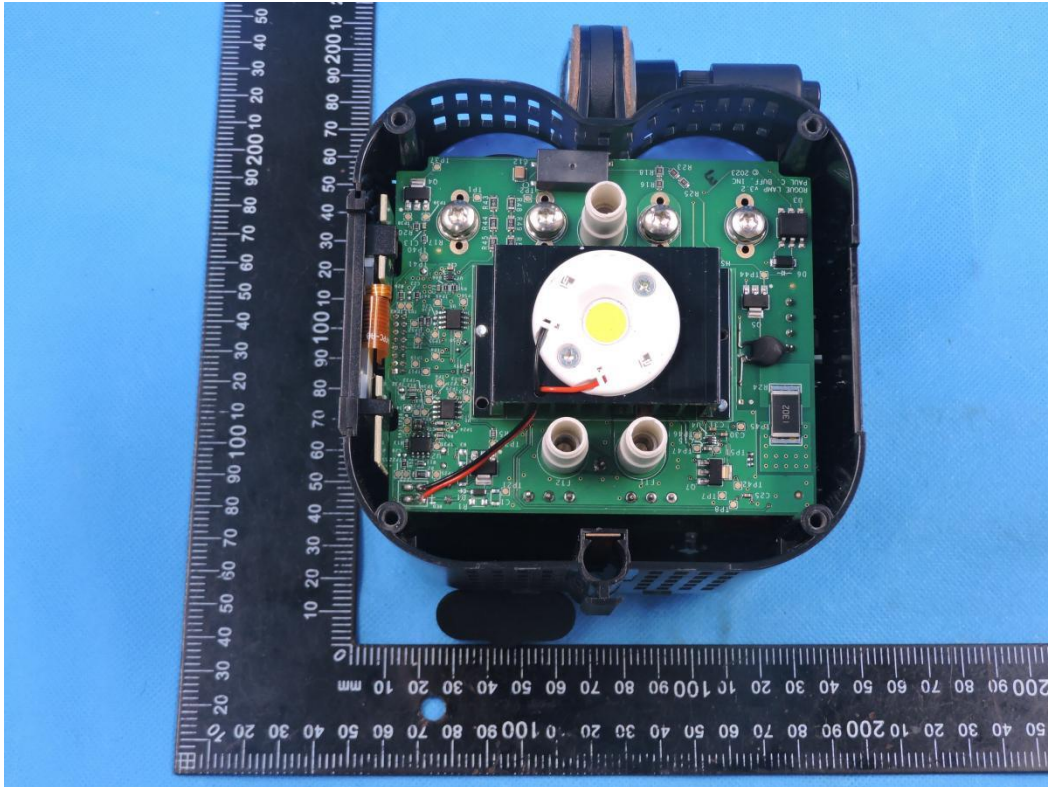


Photo 2

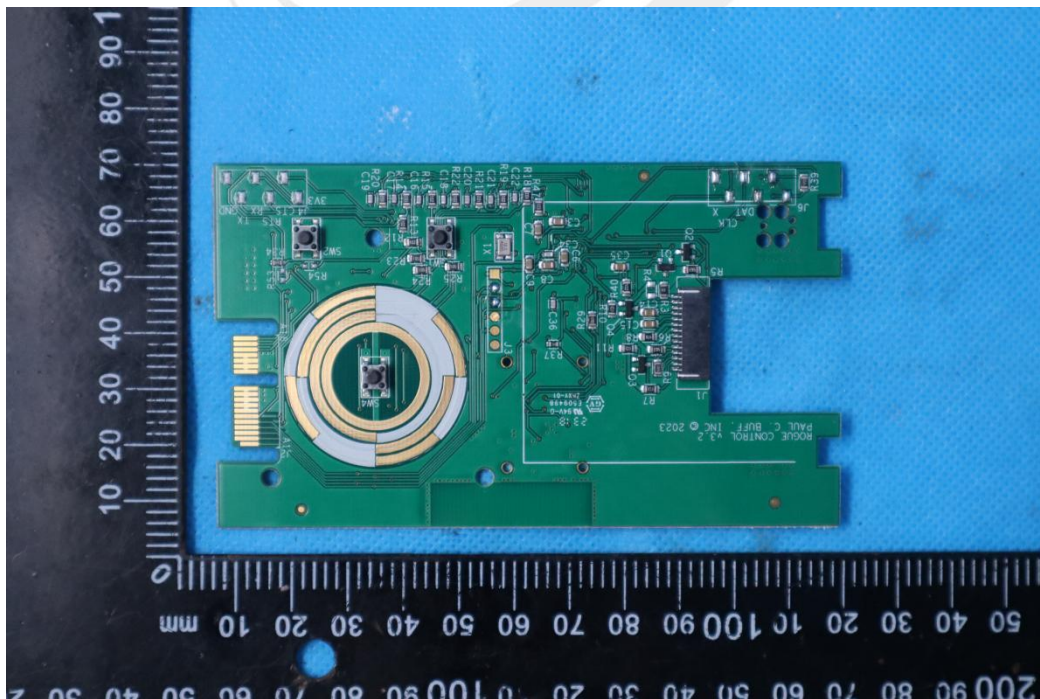




Photo 3

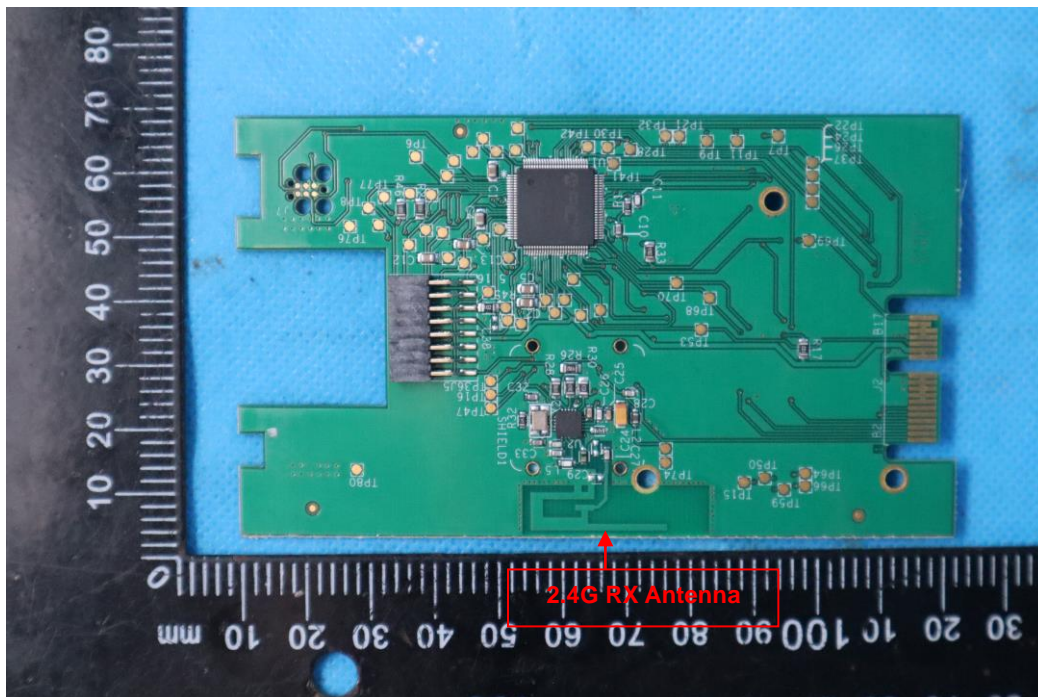


Photo 4

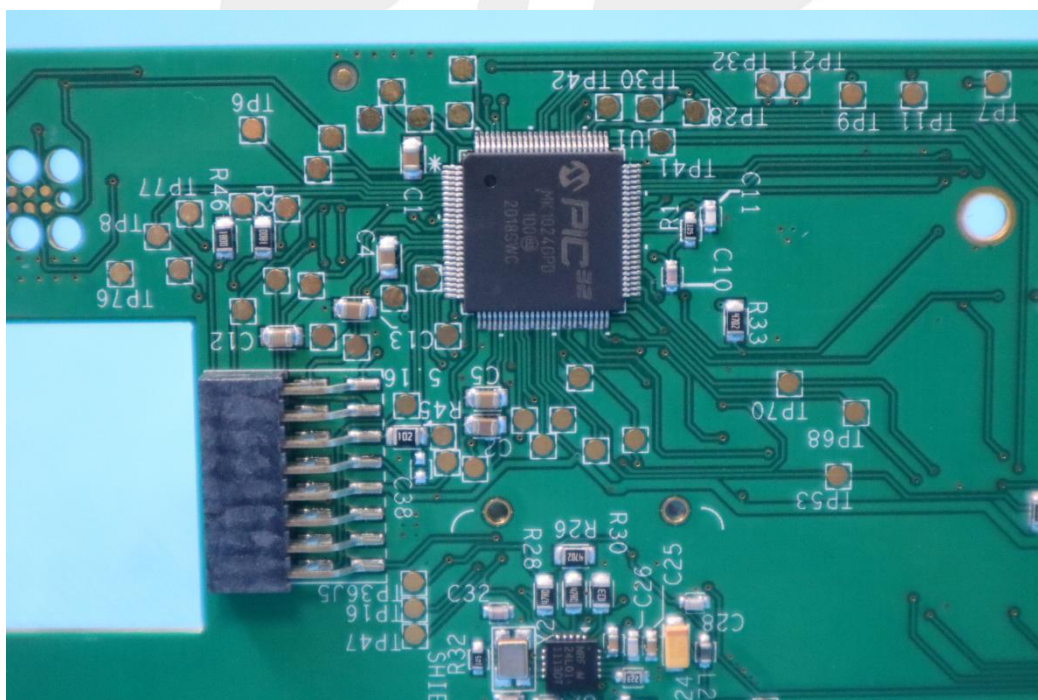


Photo 5

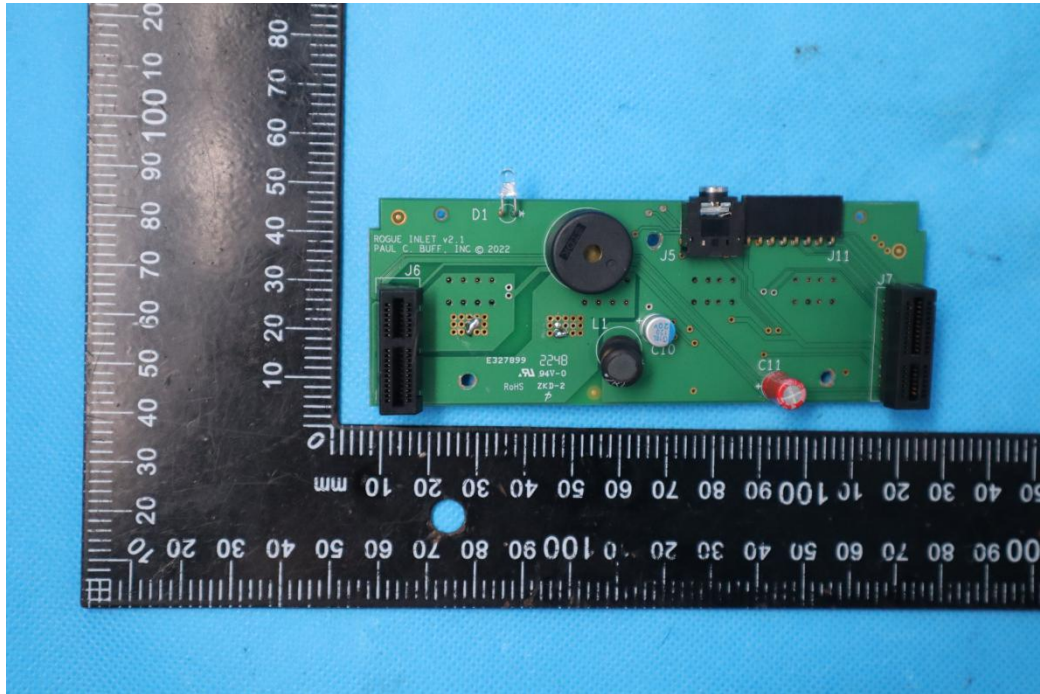


Photo 6

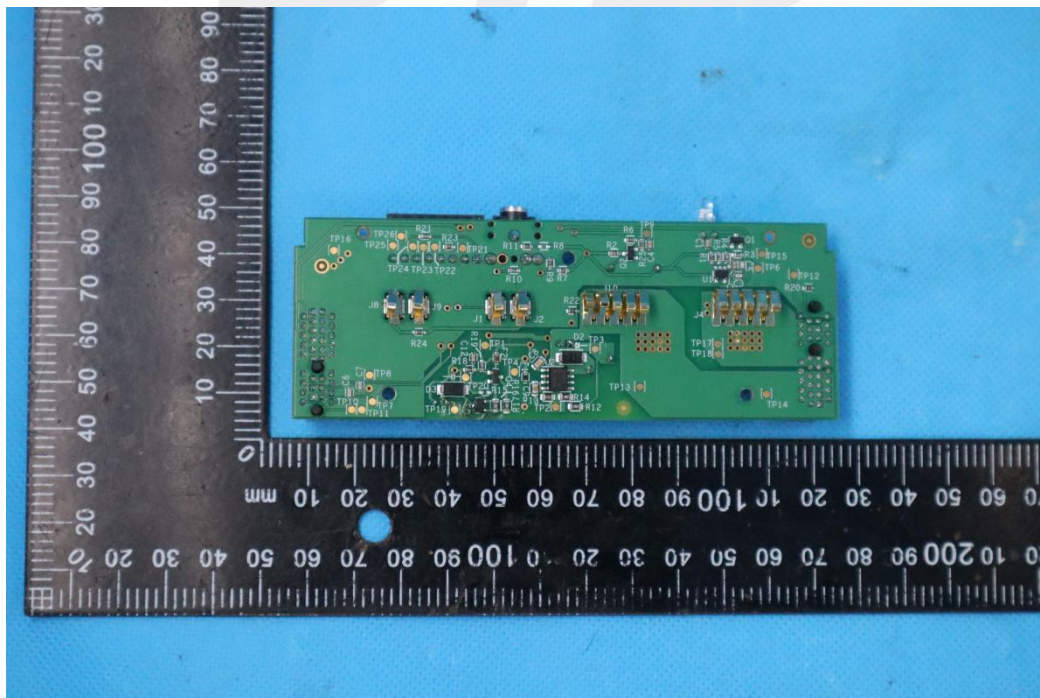


Photo 7

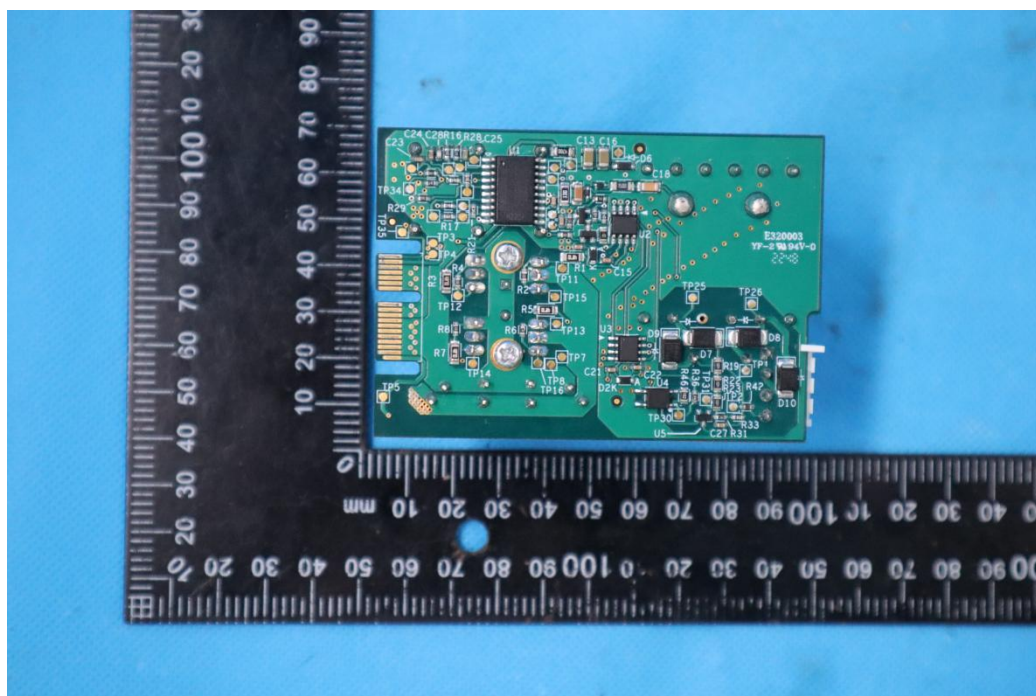
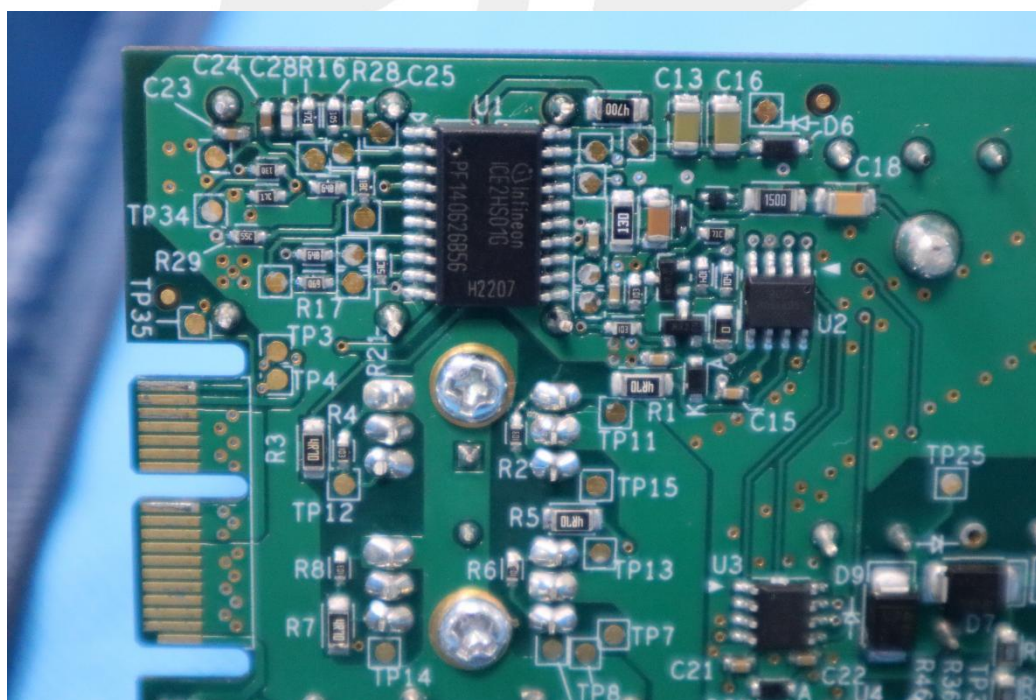


Photo 8





A photograph of a custom PCB assembly on a blue background. The PCB is green and populated with several components: three red electrolytic capacitors (labeled C8, C9, C10) on the left; three black electrolytic capacitors (labeled C1, C2, C3) in the center; and three red electrolytic capacitors (labeled C4, C5, C6) on the right. A large black transformer with a yellow core is mounted on the right side. A white component is visible at the top right. A ruler is placed horizontally below the PCB, showing measurements in millimeters. The PCB has text printed on it: "PAUL C. BUFF INC © 2022" and "ROGUE CHARGE v2.1".



A photograph of a green printed circuit board (PCB) with various electronic components. A large black fan is mounted on the board. Other components include several capacitors (some red, some black), integrated circuits, and a USB connector. The board is placed on a blue surface next to a black ruler with white markings in centimeters and millimeters. The ruler shows the board is approximately 100mm wide and 150mm long.

Photo 13



Photo 14



Photo 15

