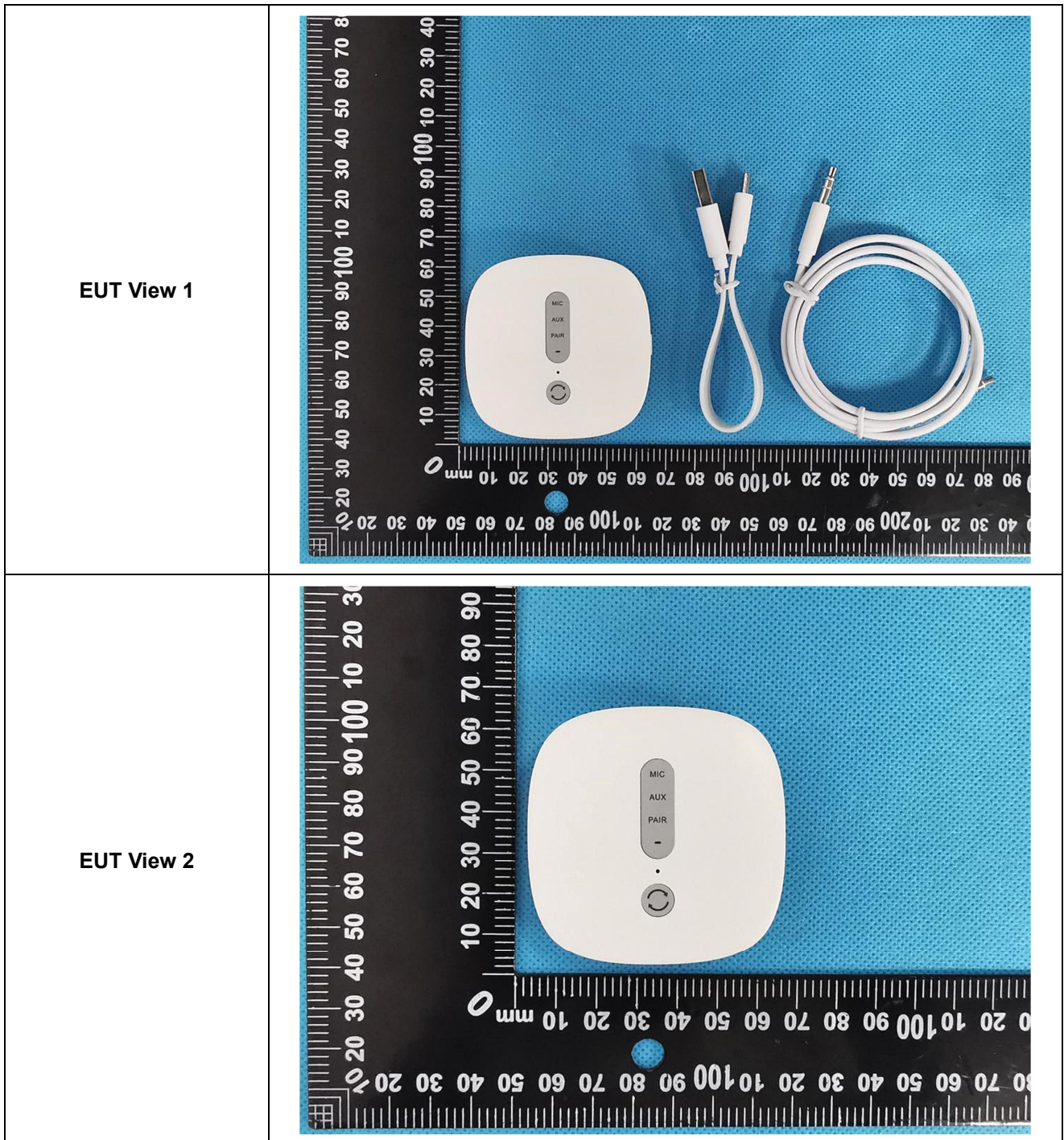
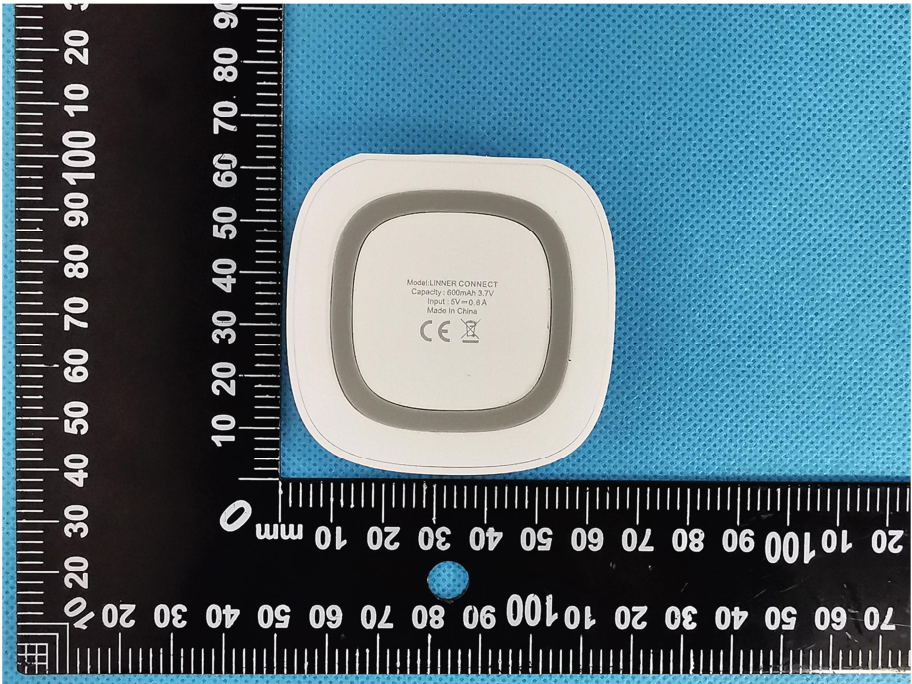

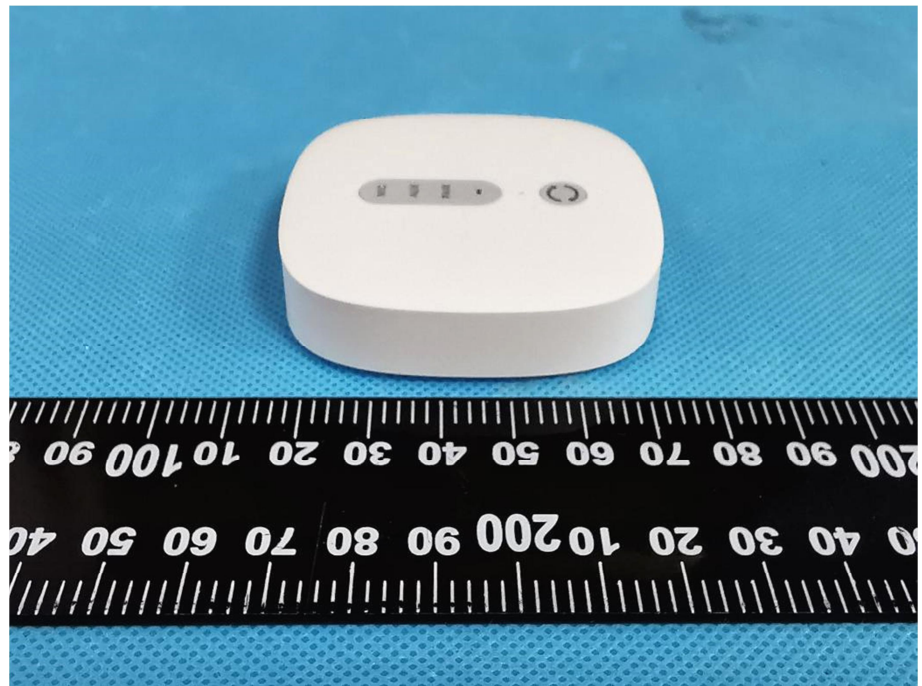


EXHIBIT 2 - EUT EXTERNAL PHOTOGRAPHS

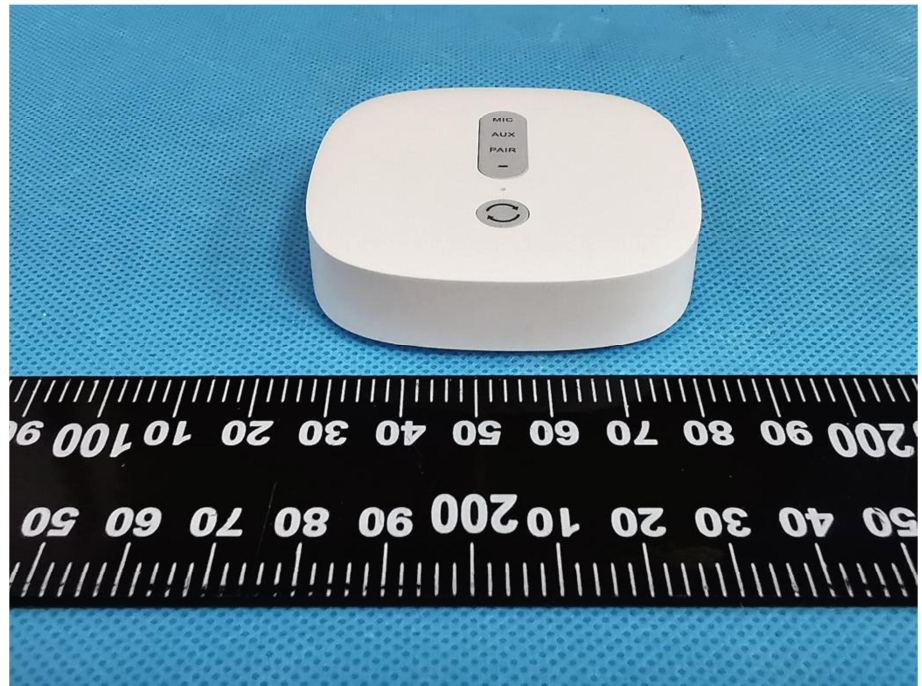


<p>EUT View 3</p>	 <p>The image shows the top view of a white, rounded square device. A ruler is placed below the device for scale. The ruler has markings in millimeters and centimeters. The device's top surface features a circular recessed area with the following text: "Model: LIPNER CONNECT", "Capacity: 600mAh-3.7V", "Input: 5V-0.8A", "Made in China", and a CE mark. The device is set against a blue textured background.</p>
<p>EUT View 4</p>	 <p>The image shows the front view of the device. A ruler is placed below it for scale. The front face has a vertical strip of controls: a power button at the top, followed by "PAIR", "AUX", and "MIC" buttons. At the bottom, there is an "AUX" port and a "TYPE-C" port. The device is set against a blue textured background.</p>

EUT View 5



EUT View 6



EUT View 7

