



Antenna Part Specification

| | |
|--------------------|-----------------|
| Customer name: | Lexin |
| Project name: | B200 Launch box |
| Material category: | BT antenna |
| Version: | V1.0 |
| Date: | 2022.10.14 |



Contents

I: The report of passive data 3
II: 3D Active test report of antenna..... 5
III: Structure file 6
IV: Additional information..... 7

| Change record | | | |
|-----------------------|-------------------|-----------------|---------|
| Compile / change date | Reason for change | Changed content | Version |
| 2022.10.14 | First edition | First edition | V1.0 |
| | | | |
| | | | |

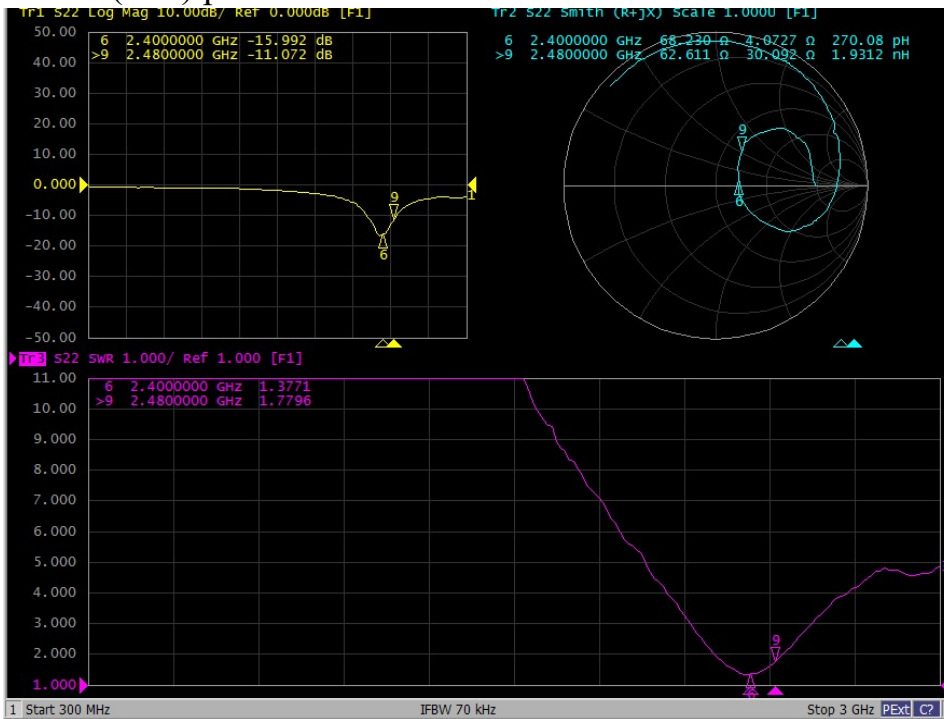


I: The report of passive data



Angilent E5071C

VSWR(S11) parameter:



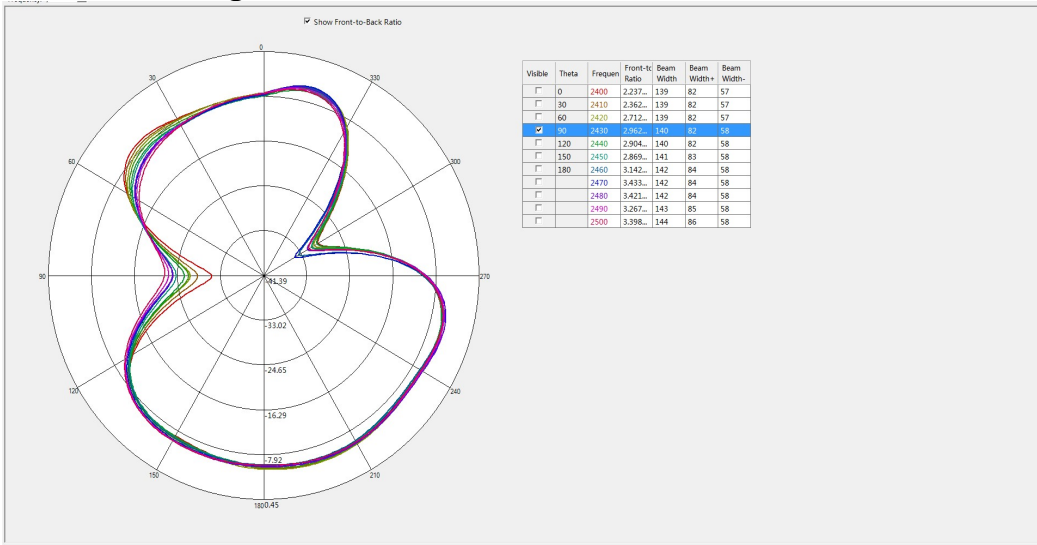
Efficiency:

| 2400-2480 MHz | | | |
|-----------------|------------|------------------|------------|
| Frequency (MHz) | Gain (dBi) | Efficiency (dB) | Efficiency |
| 2400 | 1.67 | -2.24 | 60% |
| 2410 | 1.68 | -2.22 | 60% |
| 2420 | 1.65 | -2.17 | 61% |
| 2430 | 1.53 | -2.34 | 58% |
| 2440 | 1.40 | -2.55 | 56% |
| 2450 | 1.40 | -2.50 | 56% |
| 2460 | 1.21 | -2.65 | 54% |
| 2470 | 1.48 | -2.36 | 58% |
| 2480 | 1.59 | -2.20 | 60% |
| Average value | 1.51 | -2.36 | 58% |

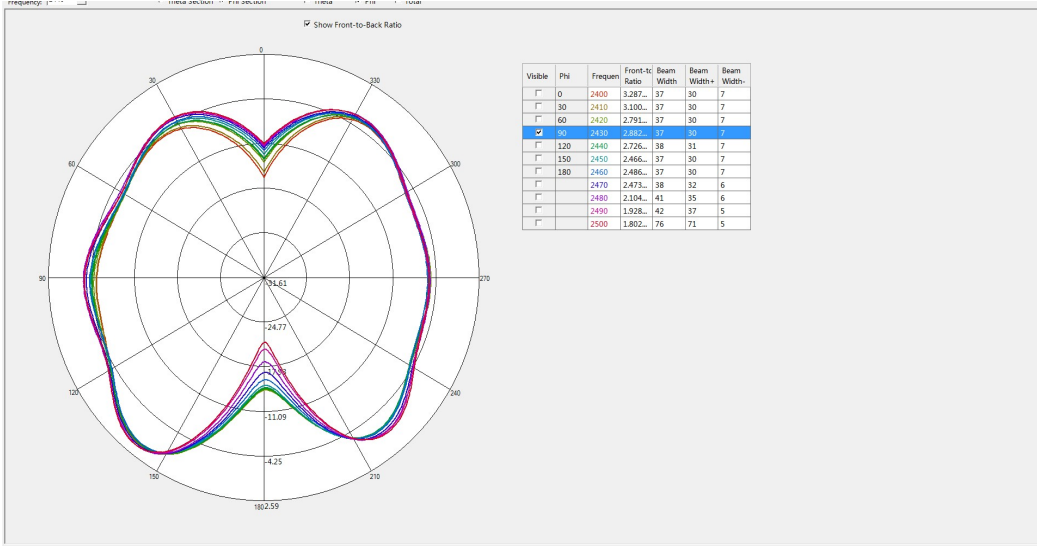
| |
|--------------------|
| Maximum gain value |
| 1.68 |



Antenna radiation pattern:
Theta=90.00deg

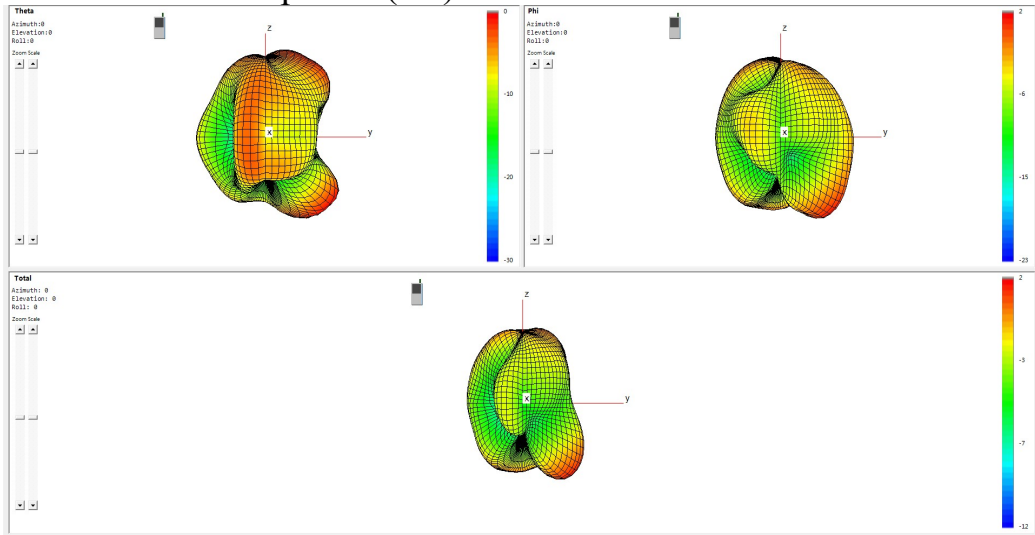


Phi=90.00deg



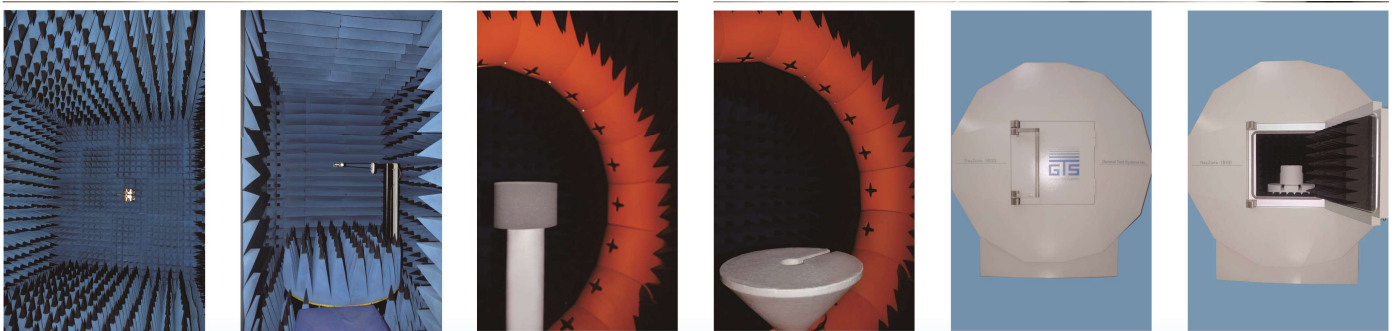


Antenna radiation pattern(3D):



II: 3D Active test report of antenna

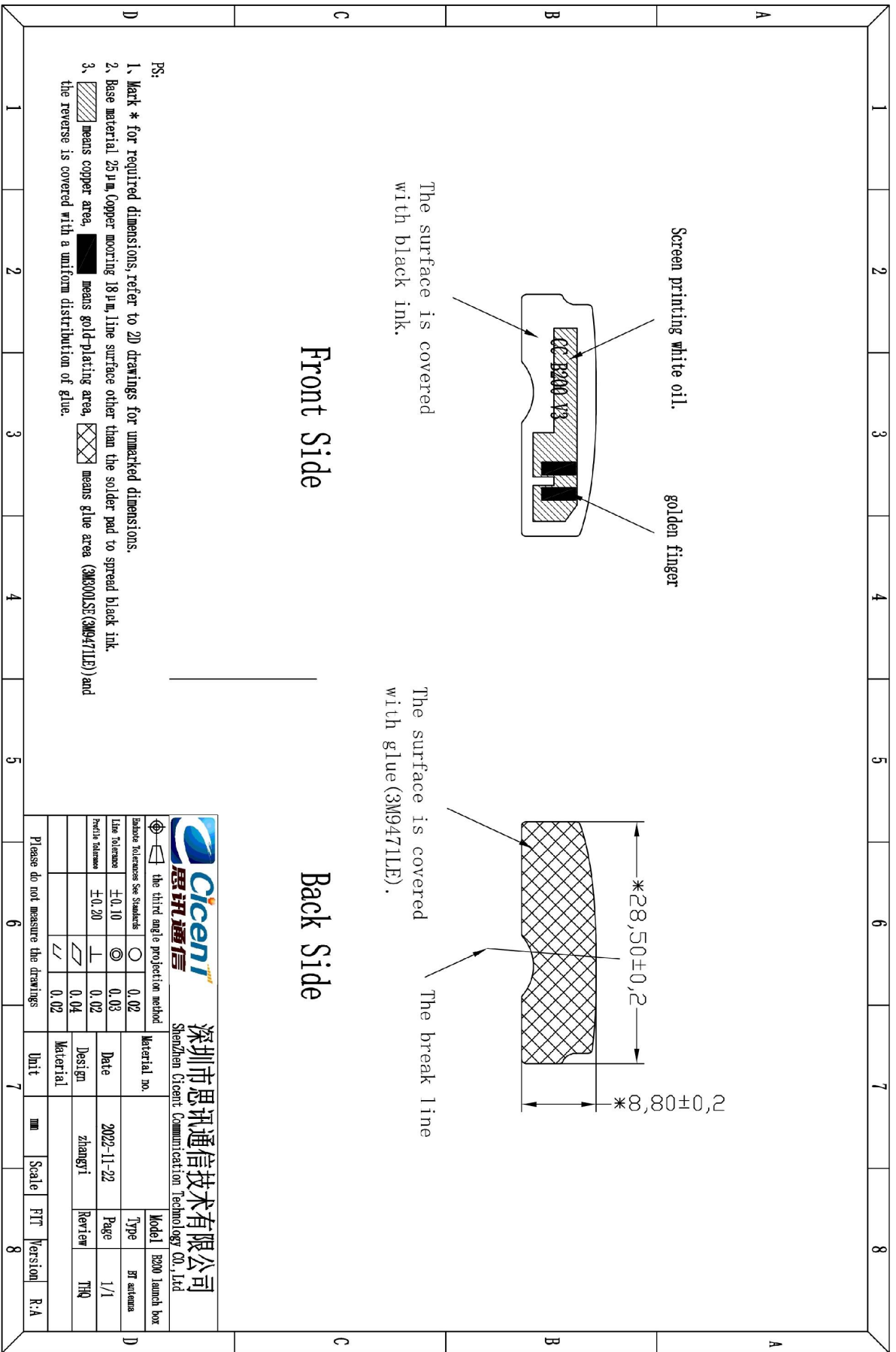
| | Channel | TRP (dBm) | TIS (dBm) |
|----|---------|-----------|-----------|
| BT | CH 0 | 7.1 | -90.2 |
| | CH 39 | 7.4 | -91.1 |
| | CH 78 | 7.2 | -91.1 |



OTA Standard Chamber



III: Structure file



- RS:
1. Mark * for required dimensions, refer to 2D drawings for unmarked dimensions.
 2. Base material 25 μm, Copper mooring 18 μm, line surface other than the solder pad to spread black ink.
 3. means copper area, means gold-plating area, means glue area (3M9471LE) and the reverse is covered with a uniform distribution of glue.

| | | | | | |
|------------------------------------|-----------------------------------|---------------|------|---|-----------------|
| | | 深圳市思讯通信技术有限公司 | | Shenzhen Cicent Communication Technology Co., Ltd | |
| | the third angle projection method | Material no. | | Model | E200 launch box |
| | tolerance | ±0.10 | 0.03 | Type | BT antenna |
| | date | 2022-11-22 | 0.02 | Page | 1/1 |
| | design | zhangyi | 0.04 | Review | TIQ |
| | unit | | 0.02 | Material | |
| Please do not measure the drawings | | | | | |



IV: Additional information

①Antenna manufacturer: Shenzhen Cicent Communication Technology Co., Ltd.

②Antenna type: PIFA Antenna

③Antenna model: B200 Launch box