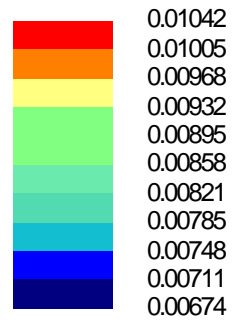
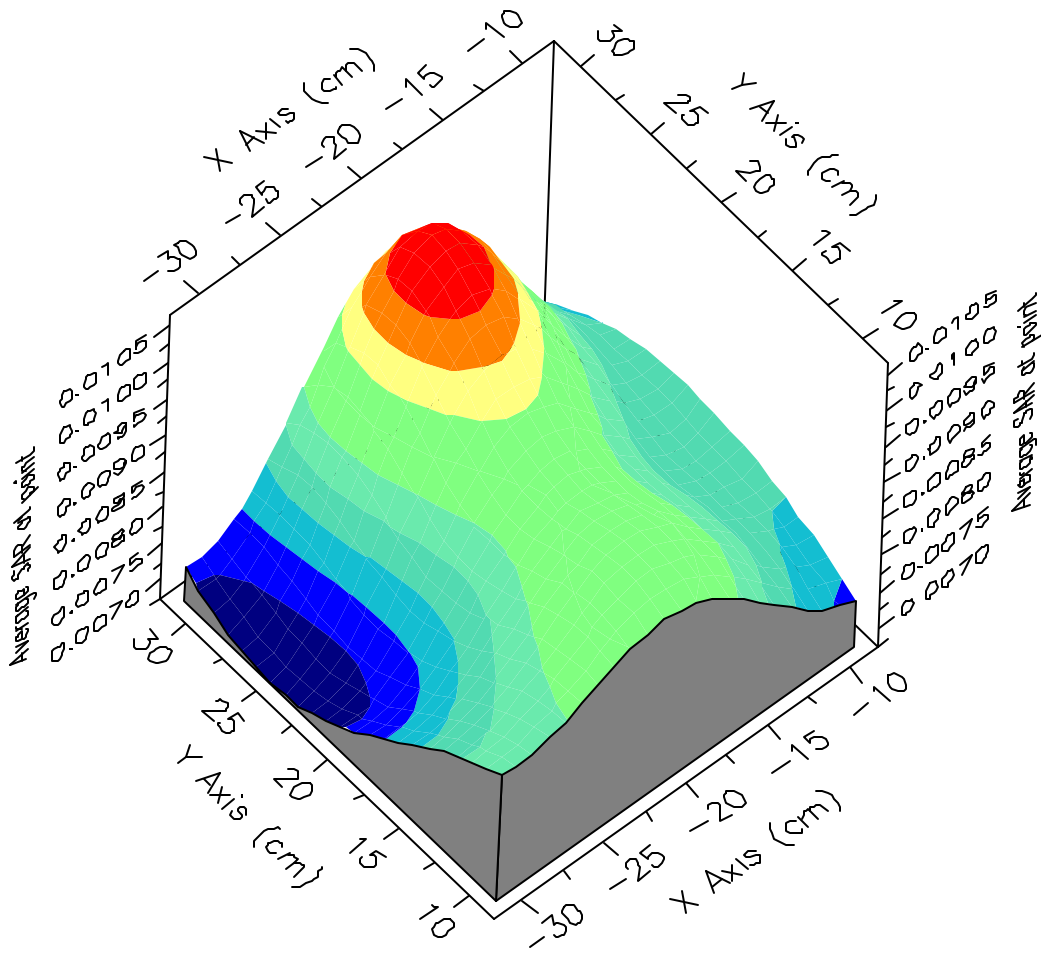
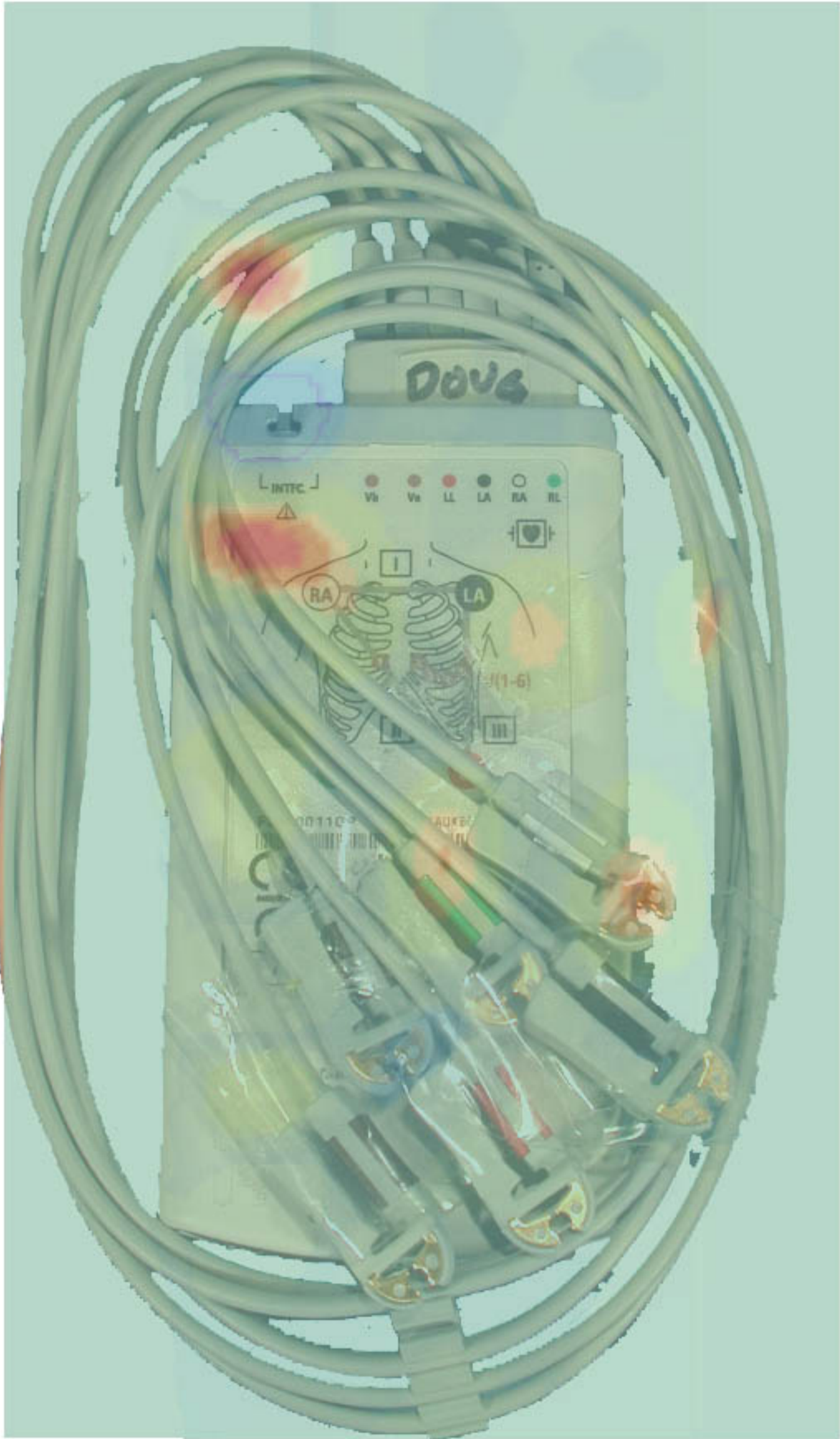


# 1g SAR Values




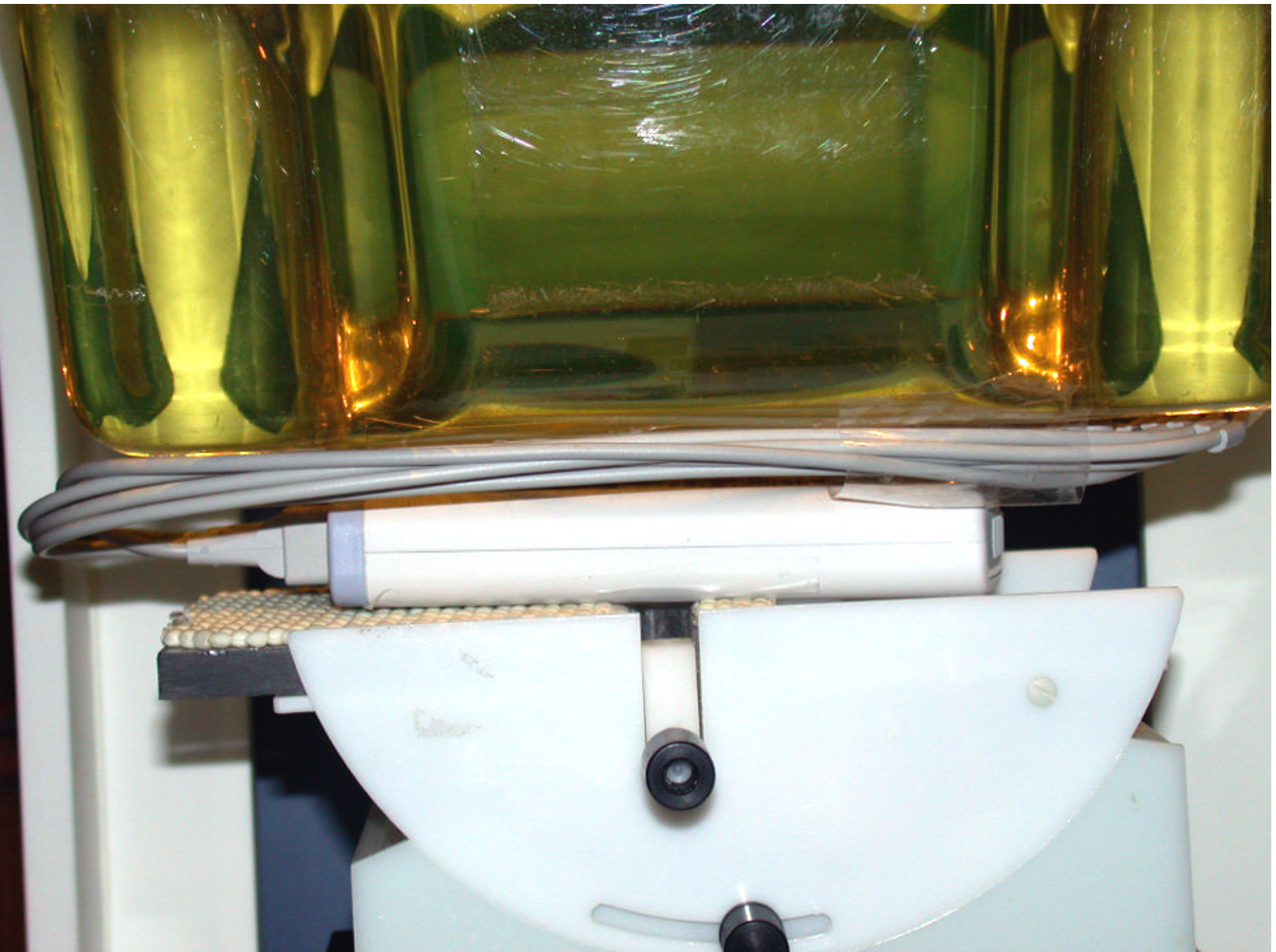


## **ATTACHMENT B – SAR TEST SETUP PHOTOGRAPHS**

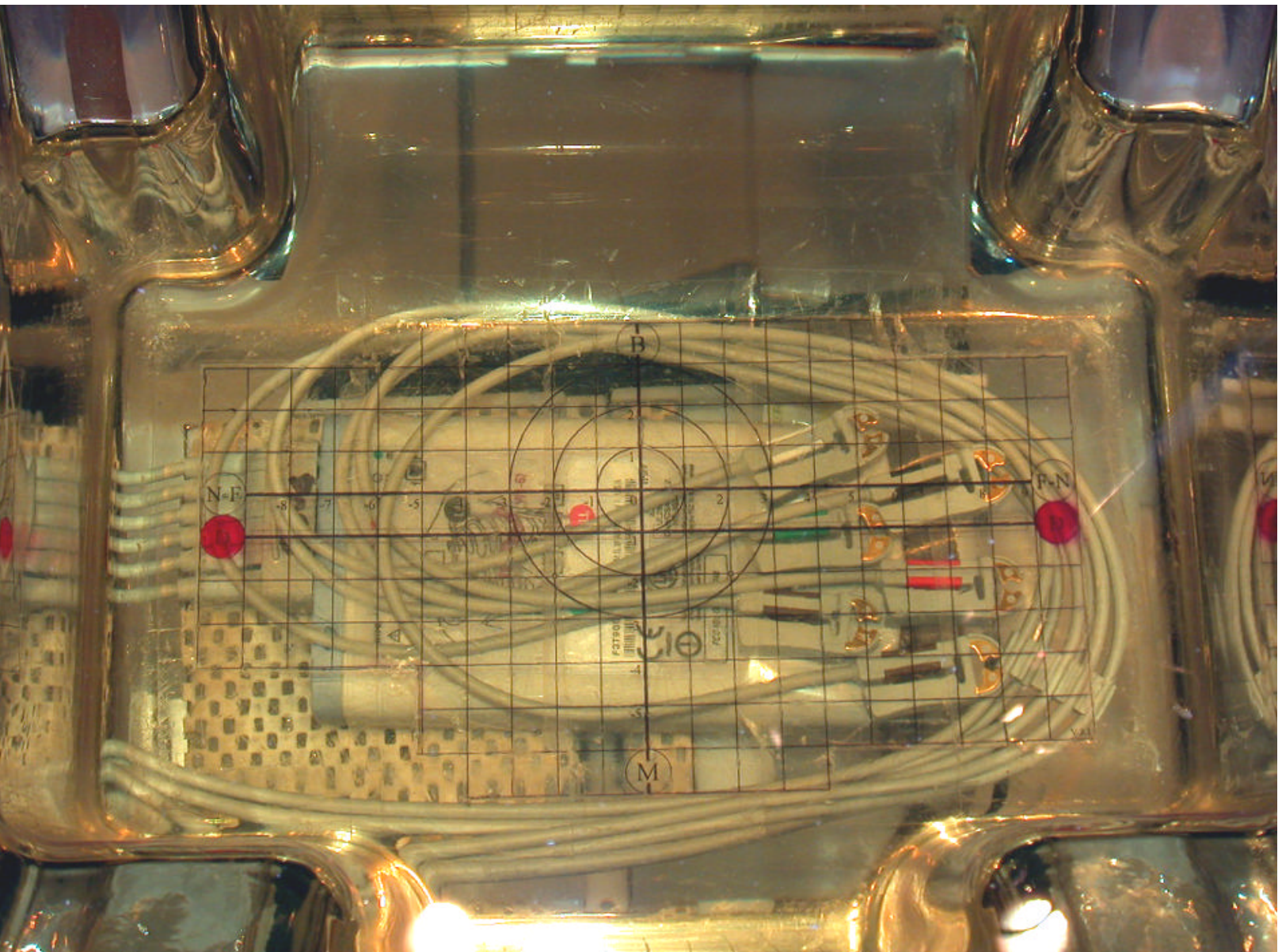
---



	GE Medical FCC ID: OUS2014748	EUT Photographs
© 2003 PC TEST Lab.	Wireless Medical Telemetry TX	Model: ApexPro CH



	GE Medical FCC ID: OU52014748	EUT Photographs
© 2003 PCTEST Lab.	Wireless Medical Telemetry TX	Model: ApexPro CH



© 2003 PCTEST Lab.

GE Medical FCC ID: OU52014748  
Wireless Medical Telemetry TX

EUT Photographs  
Model: ApexPro CH

## **ATTACHMENT C – DIPOLE VALIDATION**

---

SAR Data Report 03062520

Start : 25-Jun-03 02:43:18 pm  
End : 25-Jun-03 02:48:11 pm  
Code Version : 4.08  
Robot Version: 4.08

Product Data:

Type : Verification  
Model Number : E-010  
Serial Number : PCT003  
Frequency : 835 MHz  
Transmit Pwr : 0.250 W  
Antenna Type : Dipole

Measurement Data:

Phantom Name : SAM-FLAT-B  
Phantom Type : Uniphantom  
Tissue Type : Brain  
Tissue Dielectric : 42.000  
Tissue Conductivity : 0.910  
Tissue Density : 1.000  
Robot Name : CRS

Probe Data:

Probe Name : PCT003  
Probe Type : E Fld Triangle  
Frequency : 835 MHz  
Tissue Type : Brain  
Calibrated Dielectric : 40.000  
Calibrated Conductivity : 0.910  
Calibrated Density : 1.300  
Probe Offset : 2.400 mm  
Conversion Factor : 7.200  
Probe Sensitivity : 2.439 2.706 2.822 mV/(mW/cm<sup>2</sup>)  
Amplifier Gains : 20.00 20.00 20.00

Sample:

Rate: 6000 Samples/Sec  
Count: 1000 Samples  
NIDAQ Gain: 5

Comments:

System Verification  
  
CF=1; Amb. Temp= 22.2 'C; Liq. Temp=21.4 'C

Area Scan - Max Peak SAR Value at x=-2.0 y=-3.0 = 2.20 W/kg

Zoom Scan - Max Peak SAR Value at x=-7.0 y=-3.0 z=0.0 = 3.53 W/kg

Max 1g SAR at x=-5.0 y=-3.0 z=0.0 = 2.36 W/kg

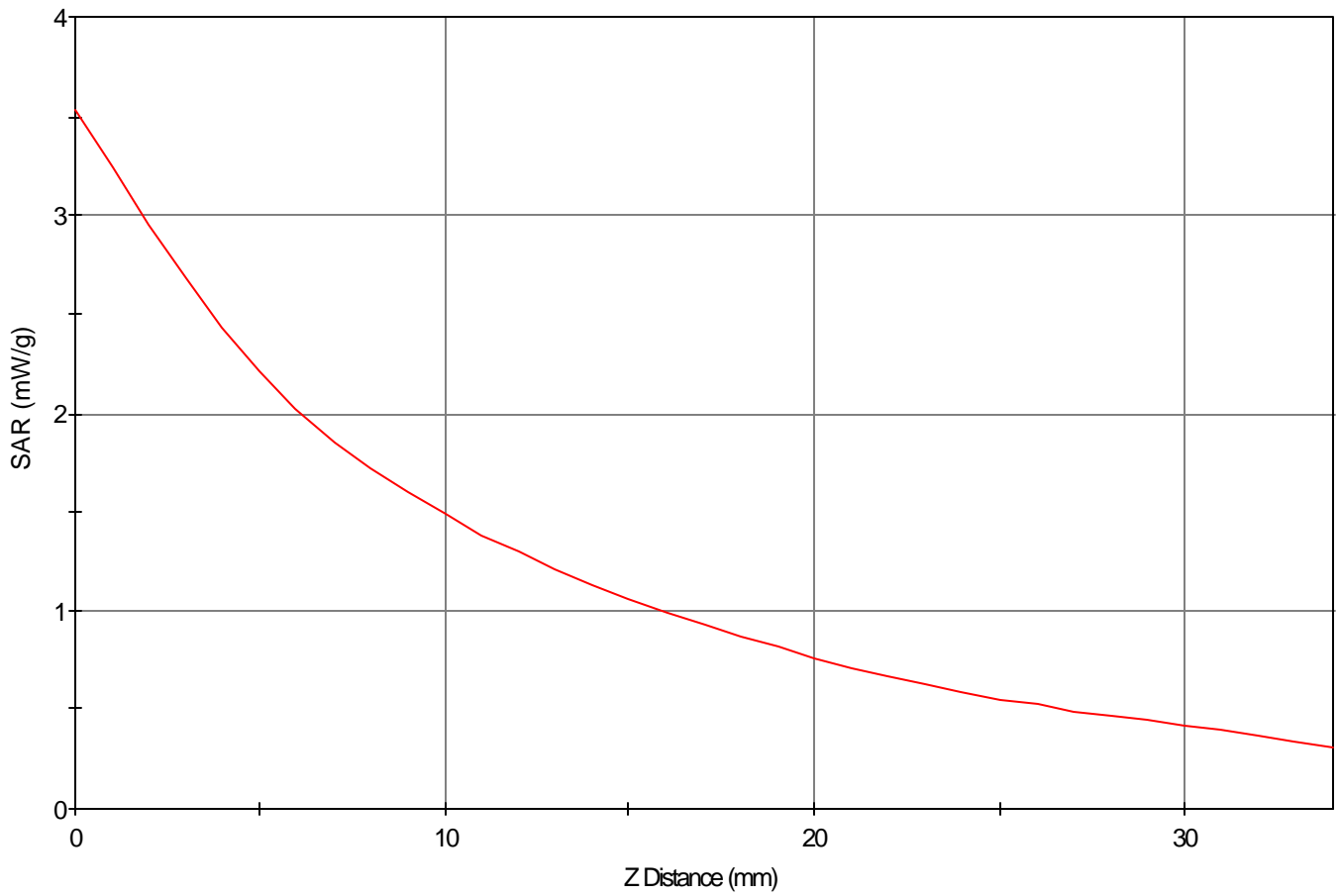
Max 10g SAR at x=-3.0 y=-2.0 z=0.0 = 1.52 W/kg

Validation Results at 0.25 W:

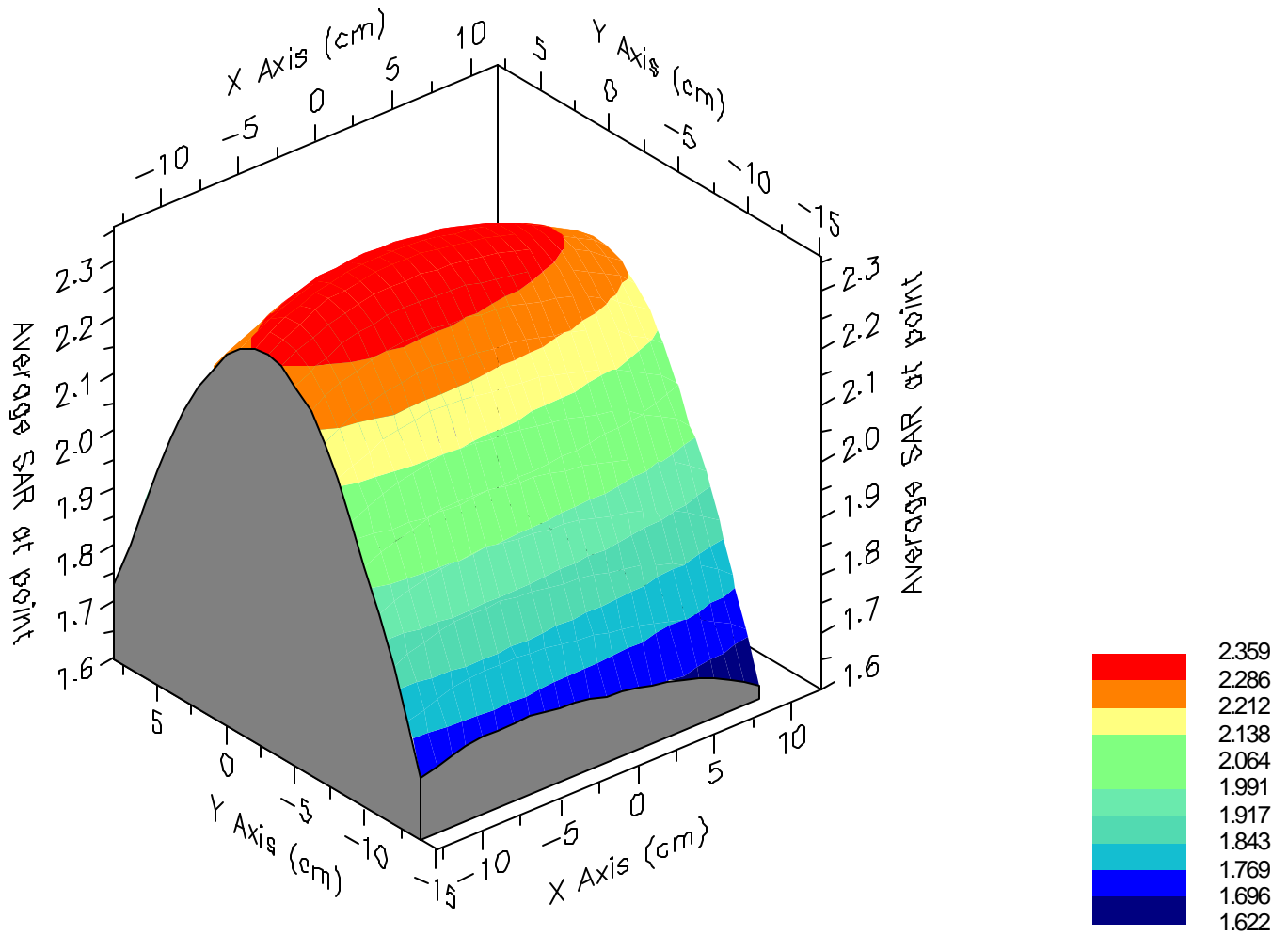
Peak Nominal = 3.5, Error: 0.20 %  
1g Nominal = 2.4, Error: -0.66 %  
10g Nominal = 1.6, Error: -2.23 %

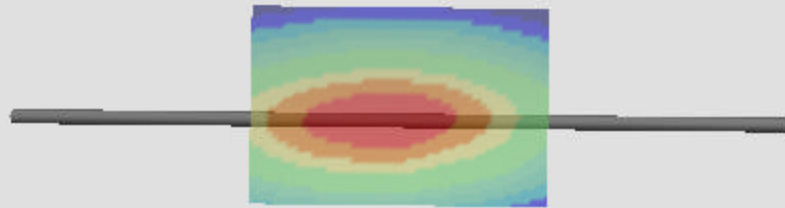


SAR - Z Axis  
at Hotspot x:-7.0 y:-3.0



### 1g SAR Values





## **ATTACHMENT D – PROBE CALIBRATION**

---

# Probe E-010

SN: PCT003

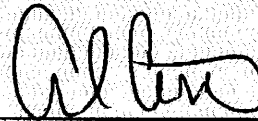
Manufactured:  
Calibrated:

November 4, 2002  
January 3, 2003

Calibrated for the IDX System

PCTEST Calibration Laboratory

Approved By:



**Alfred Cirwithian**  
Vice President Engineering

Calibration is performed according to IEEE Std. P1528-200X, Sec. 7 Draft 6.5 (2001)  
and all test equipment used are traceable to U.S. NIST.



















