

General Electric Medical Systems

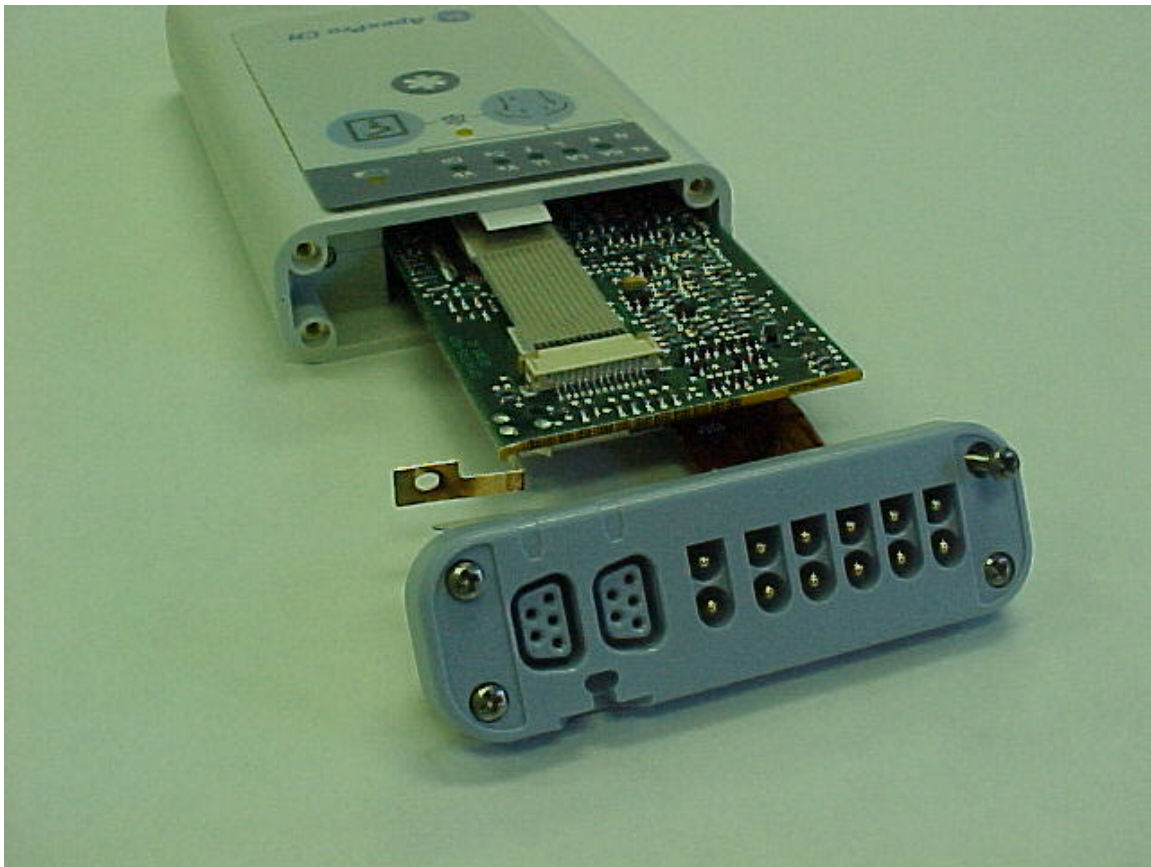
**Ambulatory Patient Monitor
608.025 – 613.975 MHz Digital Radio**

FCC ID#: OU52014748

Photo One – Internal

ApexPro CH

Open for Inspection



General Electric Medical Systems

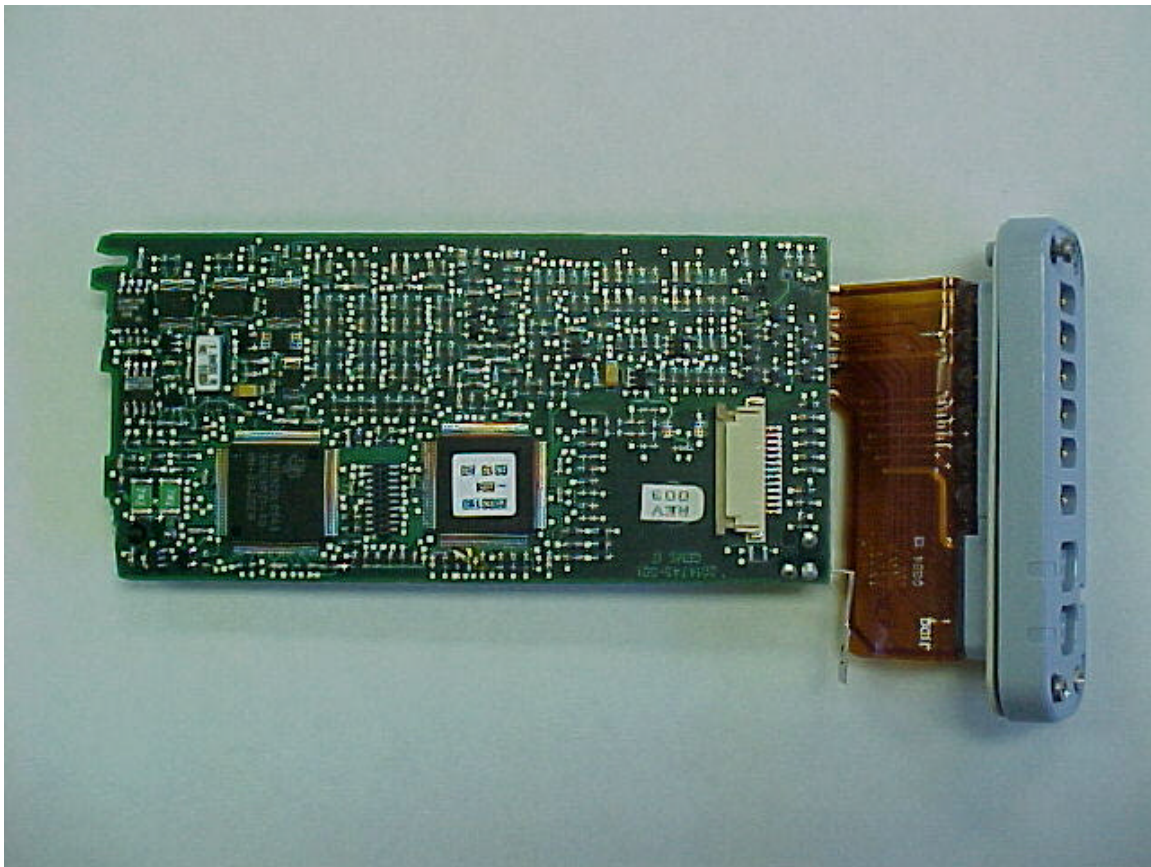
Ambulatory Patient Monitor
608.025 – 613.975 MHz Digital Radio

FCC ID#: OU52014748

Photo Two – Internal

ApexPro CH

Digital PCB Component Side



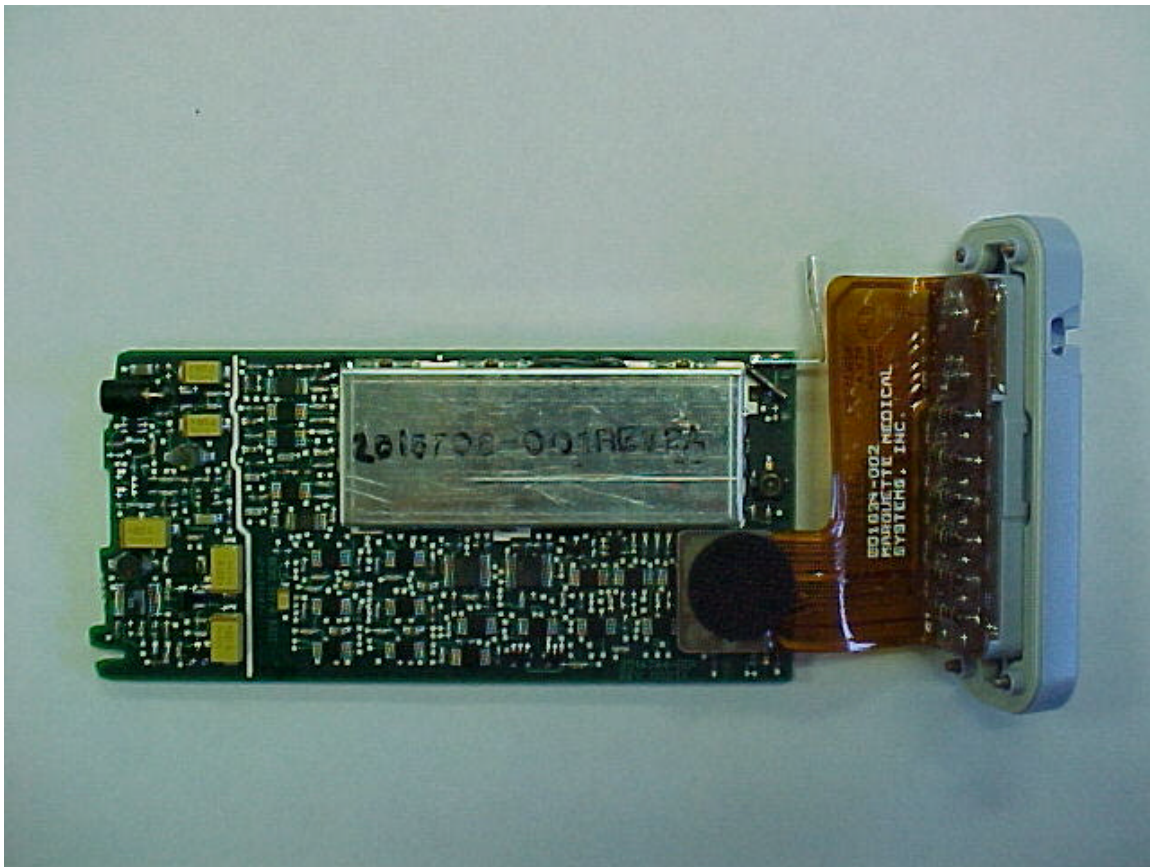
General Electric Medical Systems

Ambulatory Patient Monitor
608.025 – 613.975 MHz Digital Radio

FCC ID#: OU52014748

Photo Three – Internal
ApexPro CH

Digital PCB – RF Side, RF Section Shielded



General Electric Medical Systems

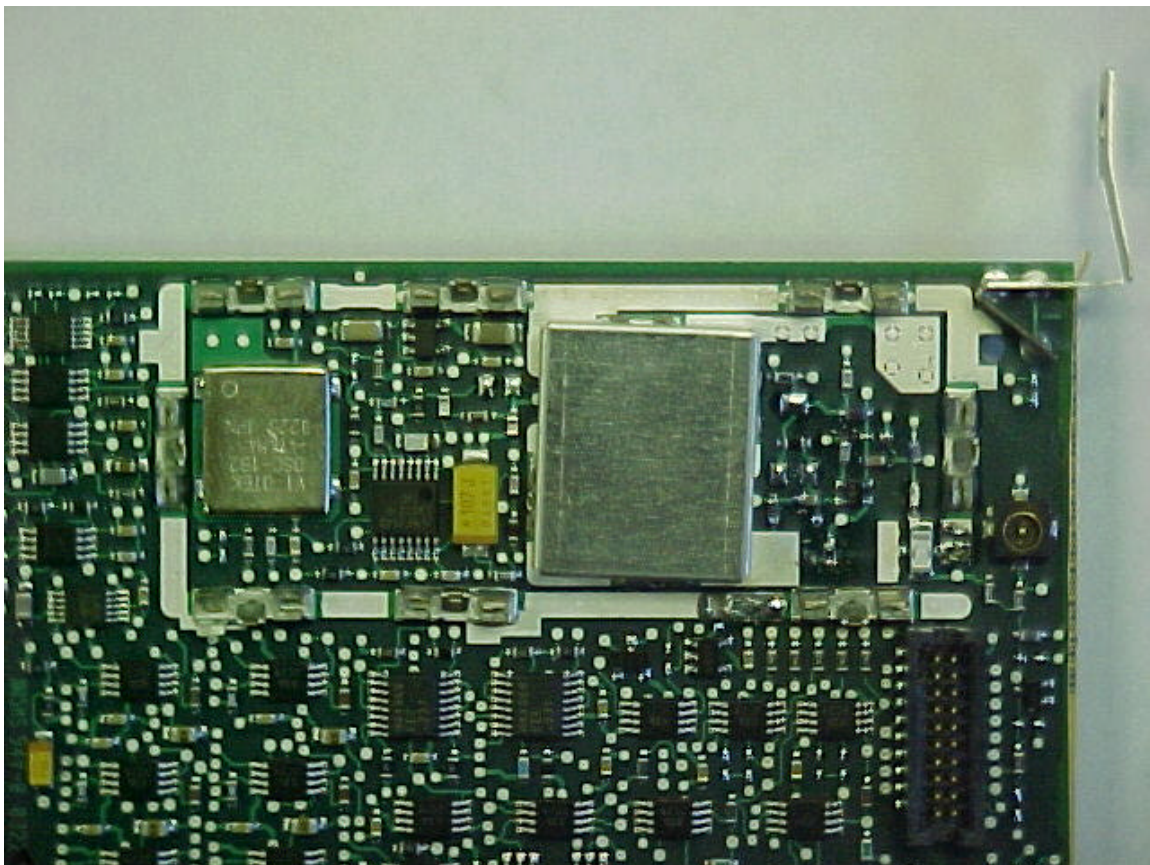
**Ambulatory Patient Monitor
608.025 – 613.975 MHz Digital Radio**

FCC ID#: OU52014748

Photo Four – Internal

ApexPro CH

RF Section with Shielding Removed



General Electric Medical Systems

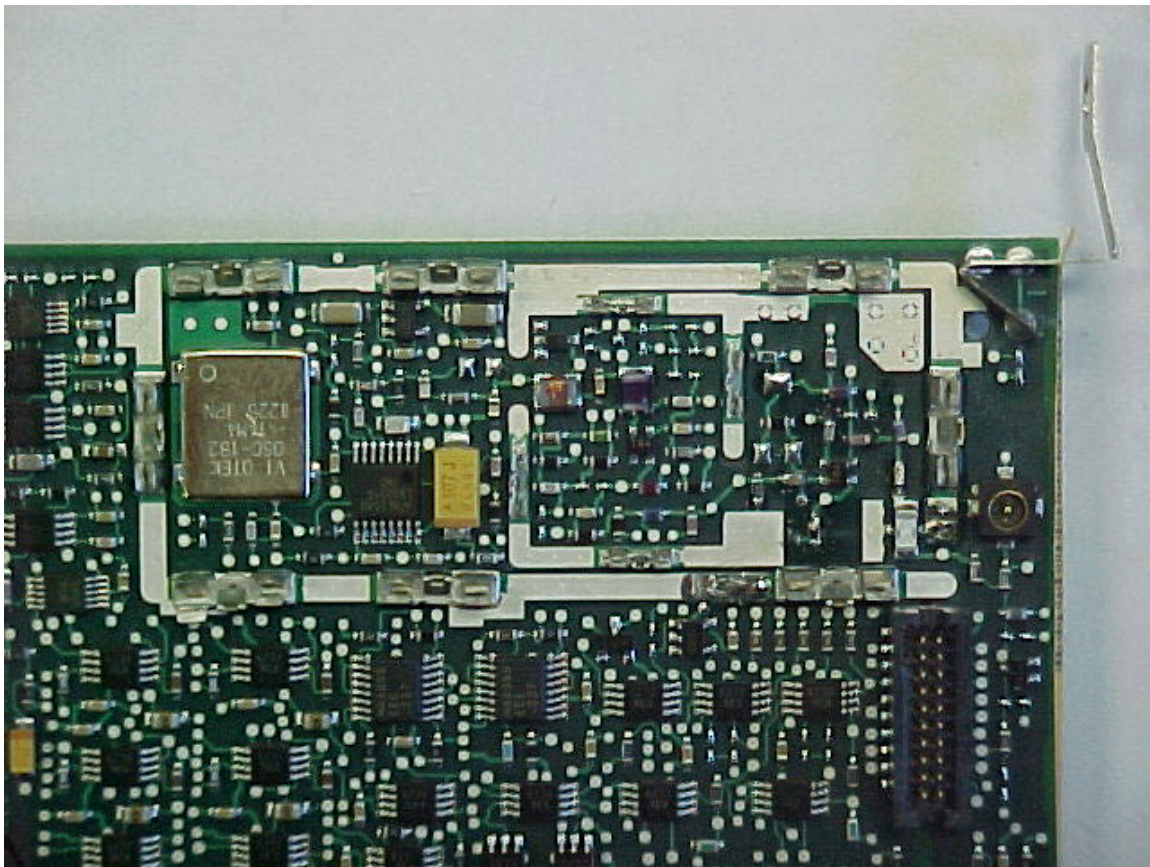
Ambulatory Patient Monitor
608.025 – 613.975 MHz Digital Radio

FCC ID#: OU52014748

Photo Five – Internal

ApexPro CH

RF Section with Additional Shielding Removed



General Electric Medical Systems

Ambulatory Patient Monitor
608.025 – 613.975 MHz Digital Radio

FCC ID#: OU52014748

Photo Six – Internal

ApexPro CH

Un Shielded side of RF Section

