

The following photos are attached:

Photo 3. EUT, Top View, Cover Opened, Transceiver installed

Photo 4. EUT, Bottom View, Cover Opened, Main PCB Removed

Photo 5. EUT / Radio Top, Cover On

Photo 6. EUT, Radio / Bottom

Photo 7. EUT, Transceiver Module, Top View, Cover Off

Photo 8. EUT Bottom View Cover off

Photo 3. EUT, Top View, Cover Opened, Transceiver installed

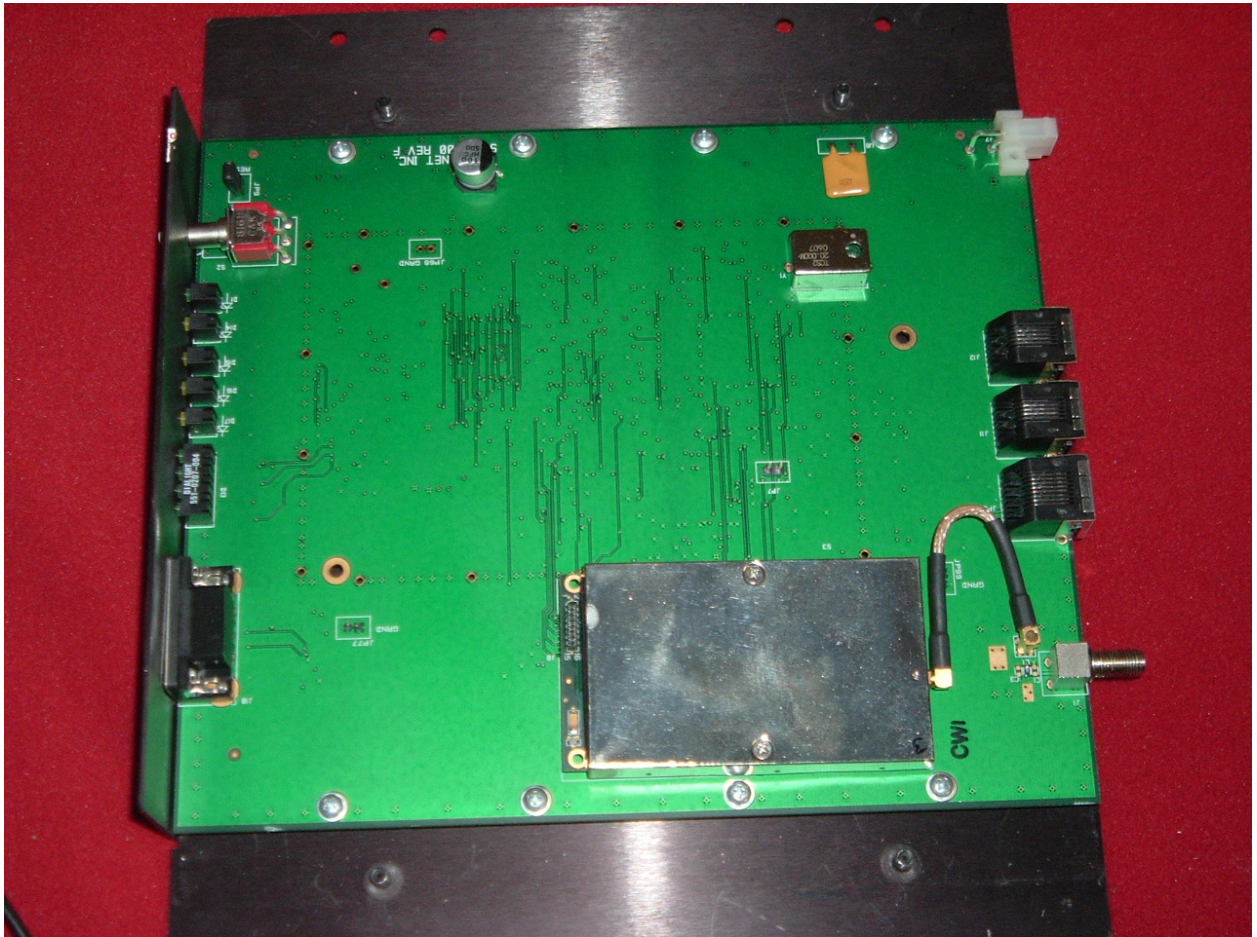


Photo 4. EUT, Bottom View, Cover Opened, Main PCB Removed

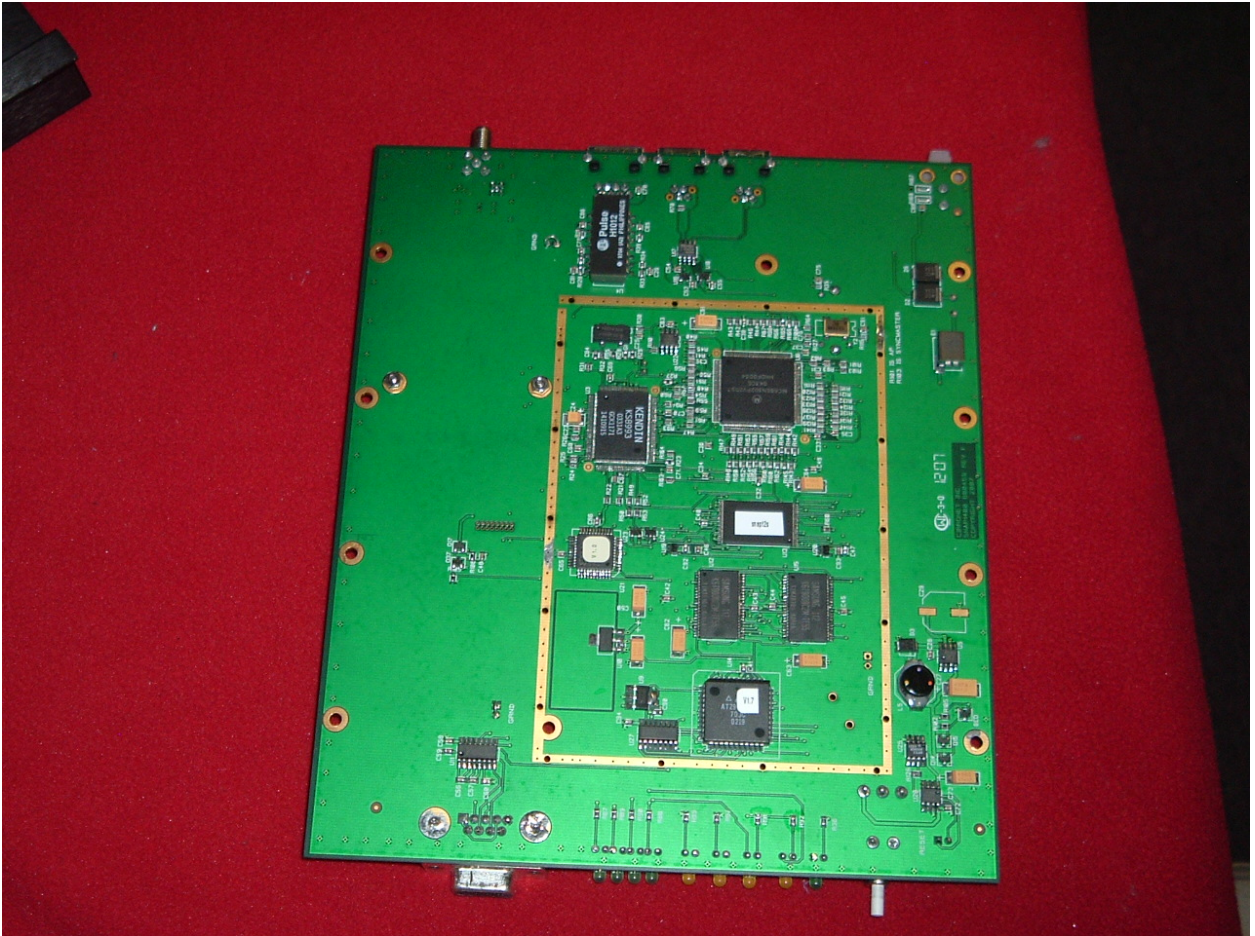


Photo 5. EUT / Radio Top, Cover On

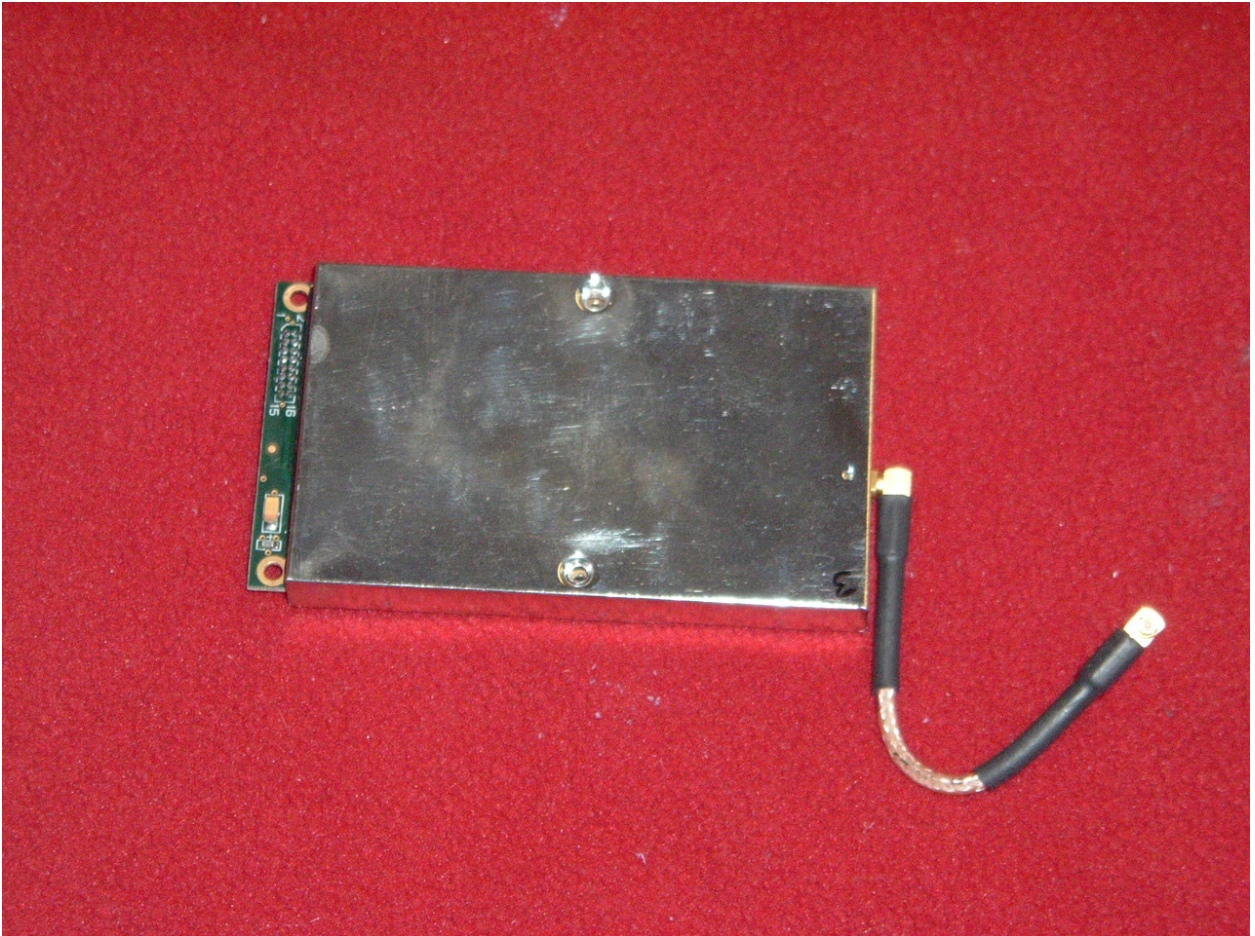


Photo 6. EUT, Radio / Bottom

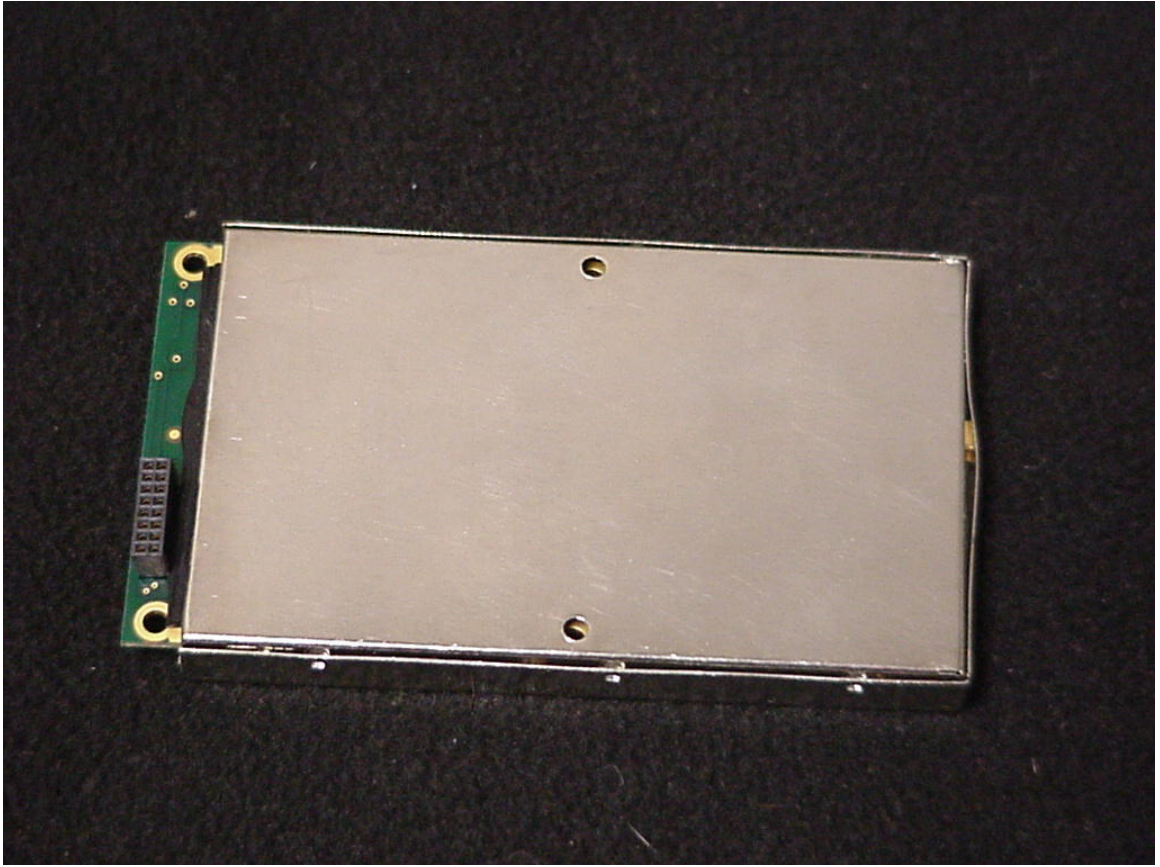




Photo 8. EUT Bottom View Cover off

