

Exhibit H: Users Manual
Xanboo
Door Sensor XSC501

APPROVALS ///

FCC ID NUMBER: 0U4-XSC501 / IC: 4576A-XSC501

STANDARDS

93/68/EEC, 89/336/EEC, BS EN 50082-1:1992, 73/23/EEC, EN60950:1992 CE

INSTRUCTION TO THE USERS (IF DEVICE DOES NOT CONTAIN A DIGITAL DEVICE)

The user is cautioned that changes or modifications not expressly approved by the party responsible for compliance could void the user's authority to operate this equipment.

INSTRUCTION TO THE USER (IF DEVICE CONTAINS A DIGITAL DEVICE)

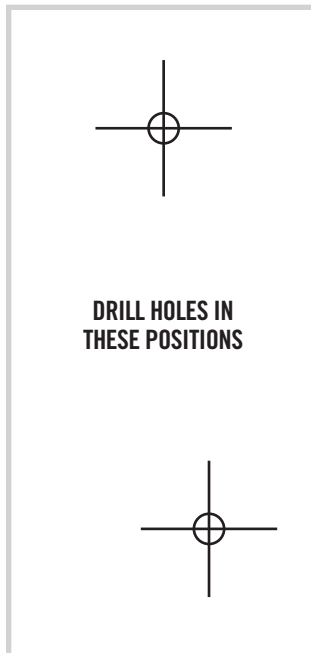
This equipment has been tested and found to comply with the limits for a class B digital device, pursuant to part 15 of the FCC Rules. These limits are designed to provide reasonable protection against harmful interference in a residential installation. This equipment generates, uses and can radiate radio frequency energy and if not installed and used in accordance with the instructions, may cause harmful interference to radio communications. However, there is no guarantee that interferences will not occur in a particular installation. If this equipment does cause harmful interference to radio or television reception, which can be determined by turning the equipment off and on, the user is encouraged to try to correct the interference by one or more of the following measures:

- Reorient or relocate the receiving antenna.
- Increase the separation between the equipment and receiver.
- Connect the equipment into an outlet on a circuit different from that to which the receiver is connected.
- Consult the dealer or an experienced radio/TV technician for help.

The term "IC:" before the certification/registration number only signifies that the Industry Canada technical specifications were met.

Operation is subject to the following two conditions: (1) this device may not cause interference, and (2) this device must accept any interference, including interference that may cause undesired operation of the device.

DRILLING TEMPLATE FOR WALL MOUNTING SENSOR(S) ///



XANBOO

WIRELESS DOOR/WINDOW SENSOR



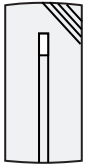
XWS10D USER'S GUIDE

PRODUCT DESCRIPTION ///

The Xanboo™ **Door/Window Sensor** allows for convenient placement. Using a magnetic force field created between the sensor and a magnetic contact you can secure household doors, office doors, file cabinets or windows.

PACKAGE CONTENTS ///

- (1) Door/Window Sensor
- (1) Magnetic Contact
- (1) Hardware Kit
- (1) Installation Guide



DOOR/WINDOW SENSOR



MAGNETIC CONTACT



HARDWARE KIT

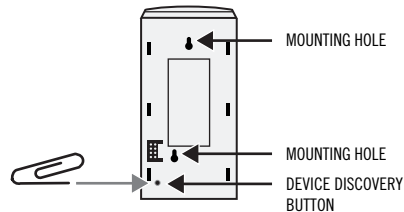
CONNECTING TO THE GATEWAY ///

DISCOVERING NEW DEVICES

In order for the Gateway to control Xanboo devices such as cameras and sensors, each device must be registered with the Gateway. The iG3 Gateway establishes a “secure wireless network” between itself and all discovered Xanboo devices. The Gateway can only control devices that it has discovered.

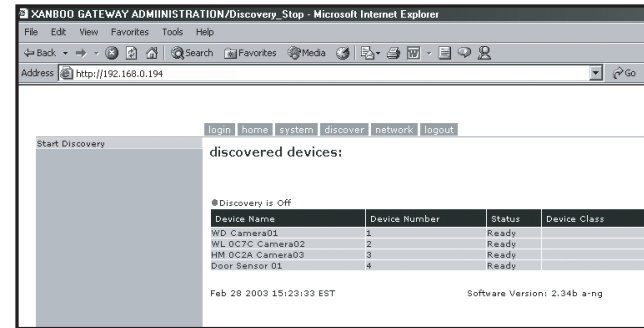
New devices can be discovered at any time:

- Log into the iG3 using ‘XANASSIST’
- Click on the ‘DISCOVERY’ menu option
- Click the ‘START DISCOVERY’ menu item, on the left, to begin discovery for your **Door/Window Sensor**.
- At this time, using a paper clip, press the ‘DISCOVERY’ button on the back of your **Door/Window Sensor**. The light on the device will turn green when the Gateway has discovered it properly.



NOTE: After a brief period, the LED will turn off. The LED is only Green when transmitting. The LED is not 'lit' during sleep mode (waiting for the next time to transmit a signal).

- Go back to your PC and confirm that the device has been discovered and displayed.



SETUP WIZARD DEVICE DISCOVERY (IN PROGRESS) PAGE

- Click on the ‘STOP DISCOVERY’ menu option when you are finished discovering all of your devices.
- The Gateway and devices are now ready to be used.

ADDITIONAL NOTES

- This page will refresh every 10 seconds to show newly discovered devices. You may have to wait for a refresh to see the device listed.
- The Gateway will automatically stop discovery after 10 minutes or if you browse off the page
- New devices can only be discovered when the Gateway has an active Internet connection (ie. your Gateway is connected to the internet).

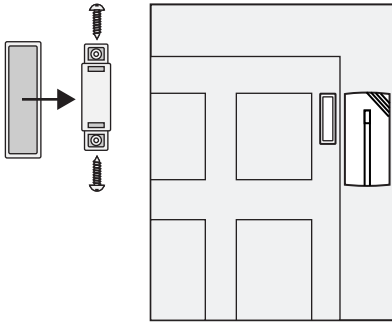
MOUNTING ///

The Xanboo™ **Door/Window Sensor** is constructed of UV resistant ABS plastic allowing for indoor or sheltered outdoor use. The **Sensor** works by creating a magnetic field between the **Sensor** base and the magnetic contact. When there is a change in status, either opening or closing, the **Sensor** will trigger an event to the Gateway. The spacing between the **Sensor** and the contact should be between 1/10 inch and .5 inch.

NOTE: The **Door/Window Sensor** cannot be used on metal doors, metal door frames or metal objects.

- Peel the paper strip from the double-sided tape located on the back of the **Sensor**. You can also mount the sensor more securely using the screws in the hardware kit. Using the drilling template on the back of the instruction guide, drill two small holes for the screws. Affix the screws to one side of the object (typically the “stationary” side) leaving 1/16” space between the screw head and the object,
- Mount the **Sensor** onto the screws and slide down to lock into place
- The magnetic contact should now be placed on the other side of the object (typically the side that moves)

4. Either peel the paper strip from the double-sided tape located on the back of the contact or you can more securely attach it using screws in the hardware kit. Remove the cover from the contact and insert the screws through the holes on the top and bottom of the contact.
5. Make sure the magnetic contact aligns with the top of the **Sensor** base on either the left or right sides of the base.



MOUNTING AND POSITIONING OF MAGNETIC CONTACT

HELPFUL HINTS ///

The Xanboo™ **Door/Window Sensor** is suitable for indoor and outdoor use. Please bear in mind the following points when choosing a mounting position:

- Xanboo™ **Door/Window Sensor** cannot be mounted on metal doors, metal door frames or metal objects.
- Be sure to use 2-“AAA” alkaline batteries from a reliable manufacturer. Currently the sensor does not support rechargeable NiCad or NiMH batteries. However, the sensor does have power saving functionality.
- You may want to periodically use the “**test**” button to ensure the gateway can “hear” the sensor.

TROUBLE SHOOTING ///

SYMPTOM	REMEDIES
LED does not light up	<ol style="list-style-type: none"> 1. Be sure the batteries are properly inserted with the correct polarity. 2. Be sure you are using fully charged batteries
Gateway does not recognize the sensor during discovery	<ol style="list-style-type: none"> 1. Ensure sensor has correct power 2. Position the sensor in closer proximity to the gateway and try again. 3. Check to make sure there is no other wireless devices interfering with the sensor. The sensor transmits on the 418 MHz or 433 MHz frequencies
Sensor continually sends an event	<ol style="list-style-type: none"> 1. Check to make sure that you have the proper settings configured for the sensor. The sensor can be configured so that it can send an event when the contacts are closed or when they are opened.

SYMPTOM

Events are not triggered

REMEDIES

1. Check to make sure that the sensor has been registered properly with the gateway.
2. Check to make sure that the gateway is currently connected to the internet and is online.
3. Check to make sure the spacing between the contact and the sensor is between 1/10” and 1”
4. Check to make sure that you have the proper settings configured for the sensor. The sensor can be configured so that it can send an event when the contacts are closed or when they are opened.
5. Ensure that the sensor and contact are not placed on metal or magnetic objects

FAQ'S ///

HOW FAR AWAY CAN THE SENSOR BE PLACED FROM THE GATEWAY?

Typically 60-80 feet.

CAN I PLACE THE SENSOR IN A DIFFERENT ROOM FROM THE GATEWAY?

Yes, the sensor and gateway use radio frequencies to communicate with each other. These frequencies can go through objects like walls, ceilings and floors

HOW LONG WILL THE BATTERY LAST?

The battery is expected to last up to 12 months. This will depend on actual use and how often the sensor is triggered. The Xanboo Door/Window Sensor includes battery saving features that make the Sensor “hibernate” when there is no activity. It ‘wakes-up’ when the sensor is triggered

HOW MANY SENSORS CAN I REGISTER WITH MY GATEWAY?

The gateway can support up to 8 sensors.

THE LIGHT ON THE SENSOR IS NOT ON?

This indicates that the sensor has gone into hibernation mode. It will wake up when the sensor is triggered.

TECHNICAL SPECS ///

- Attaches to any flat surface
- Operates on 2-AAA Alkaline batteries
- LED indicator when sensor is triggered
- Test/Discover button
- Magnetic contacts
- Key-fob ready for enabling encrypted communications

Typical Range Outdoors: 250 feet
 Typical Range Indoors: 60 feet
 Frequency Range: 418-433 MHz

WARRANTY ///

This product has a one year manufacturer’s warranty which covers parts and labor only. In the unlikely event that you encounter a problem, the unit should be returned to the place of purchase.