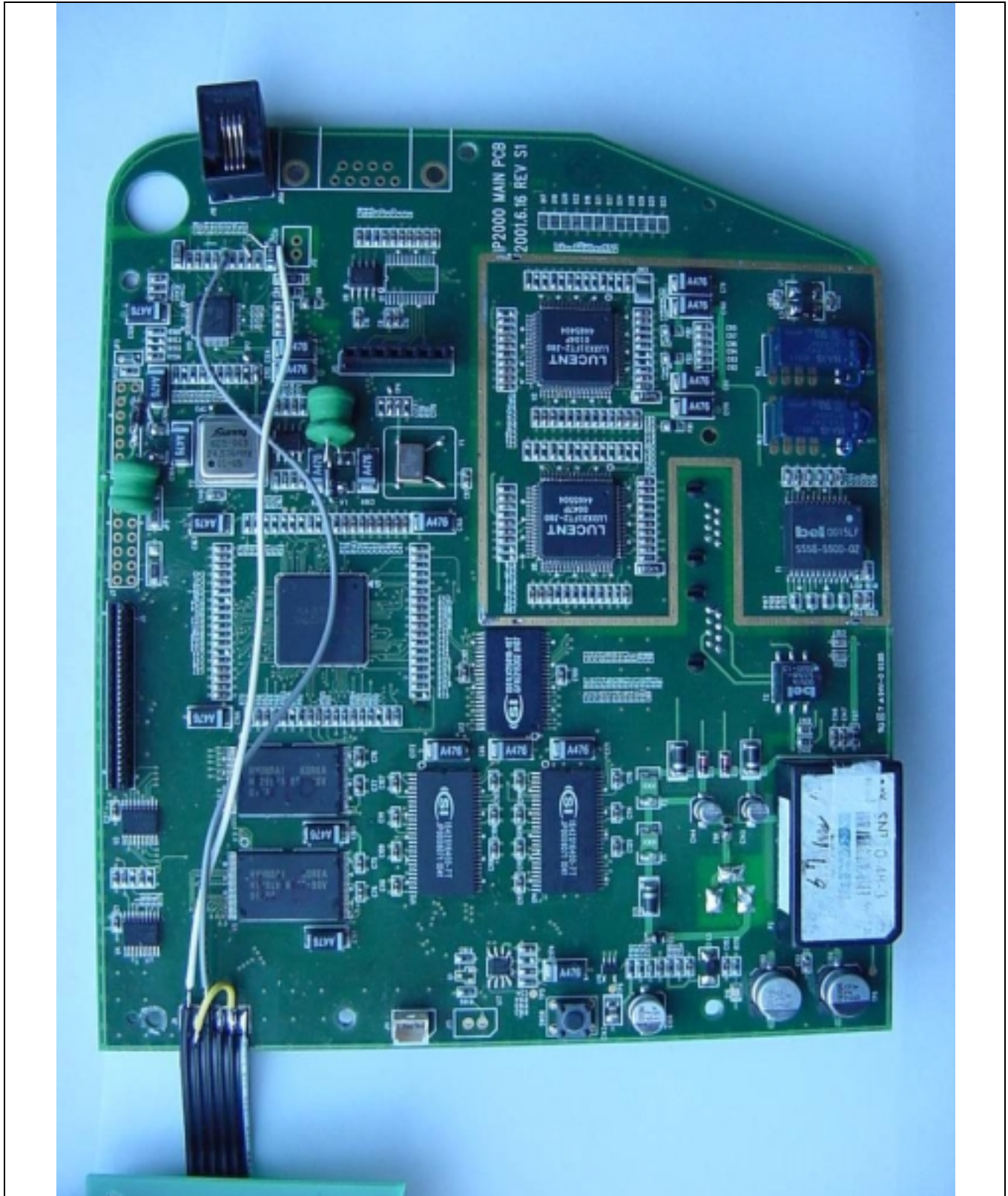


This report shall not be reproduced except in full without our written approval.

FCC-003 (Rev.0)

**HEAD OFFICE** : #505 SK APT. Factory 223-28, Sangdaewon 1 Dong, Jungwon-Gu, Seongnam-City, Kyunggi-Do, 462-121, Korea  
(TEL: 82-31-746-8500 FAX: 82-31-746-8700)

**EMC Testing Dept** : 426-1 Daessangryung-Ri, Chowol-Myun, Kwangju-City, Kyunggi-Do 464-860 Korea. (TEL: 82-31-765-8289 FAX: 82-31-766-2904)

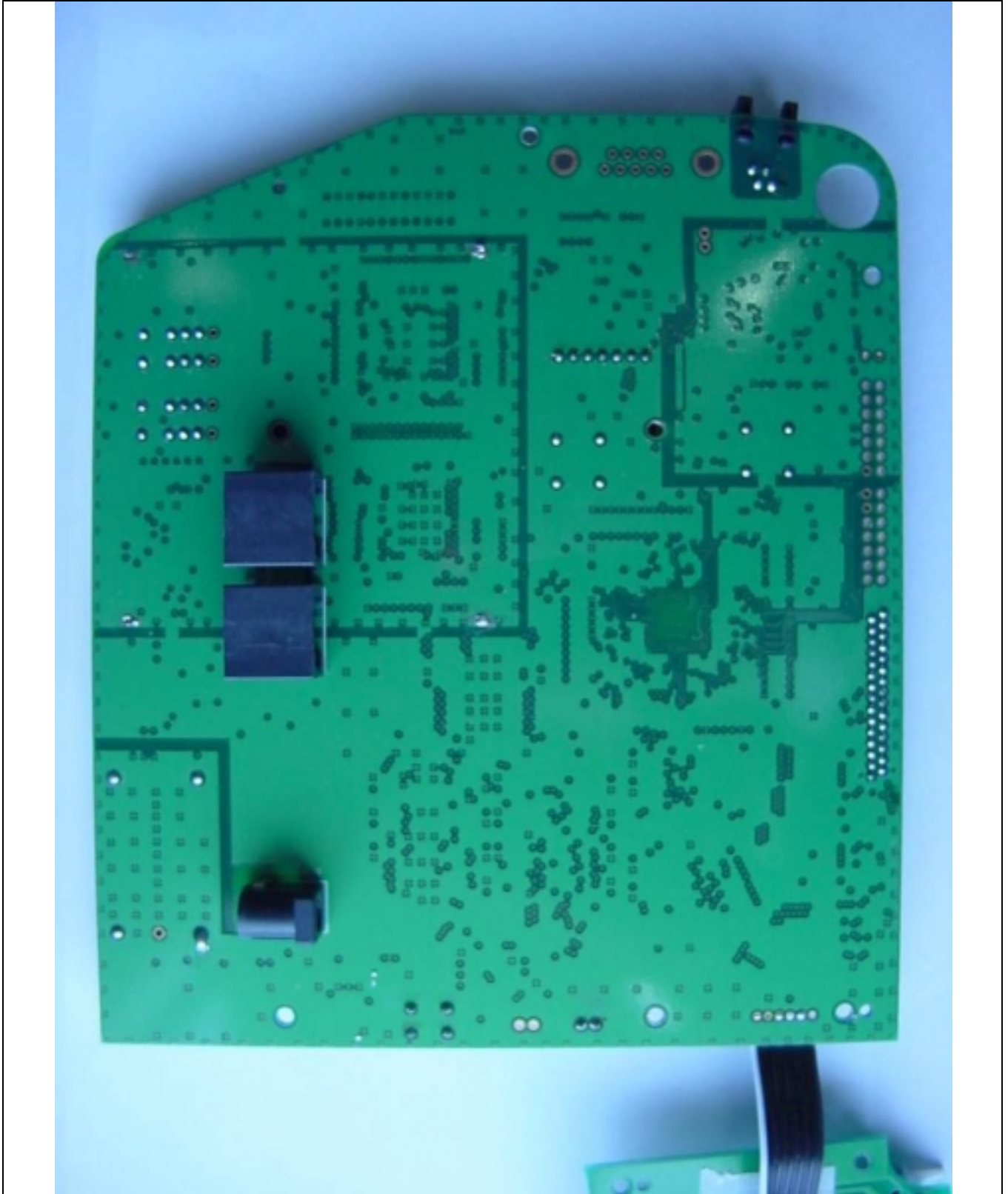


This report shall not be reproduced except in full without our written approval.

FCC-003 (Rev.0)

**HEAD OFFICE** : #505 SK APT. Factory 223-28, Sangdaewon 1 Dong, Jungwon-Gu, Seongnam-City, Kyunggi-Do, 462-121, Korea  
(TEL: 82-31-746-8500 FAX: 82-31-746-8700)

**EMC Testing Dept** : 426-1 Daessangryung-Ri, Chowol-Myun, Kwangju-City, Kyunggi-Do 464-860 Korea. (TEL: 82-31-765-8289 FAX: 82-31-766-2904)

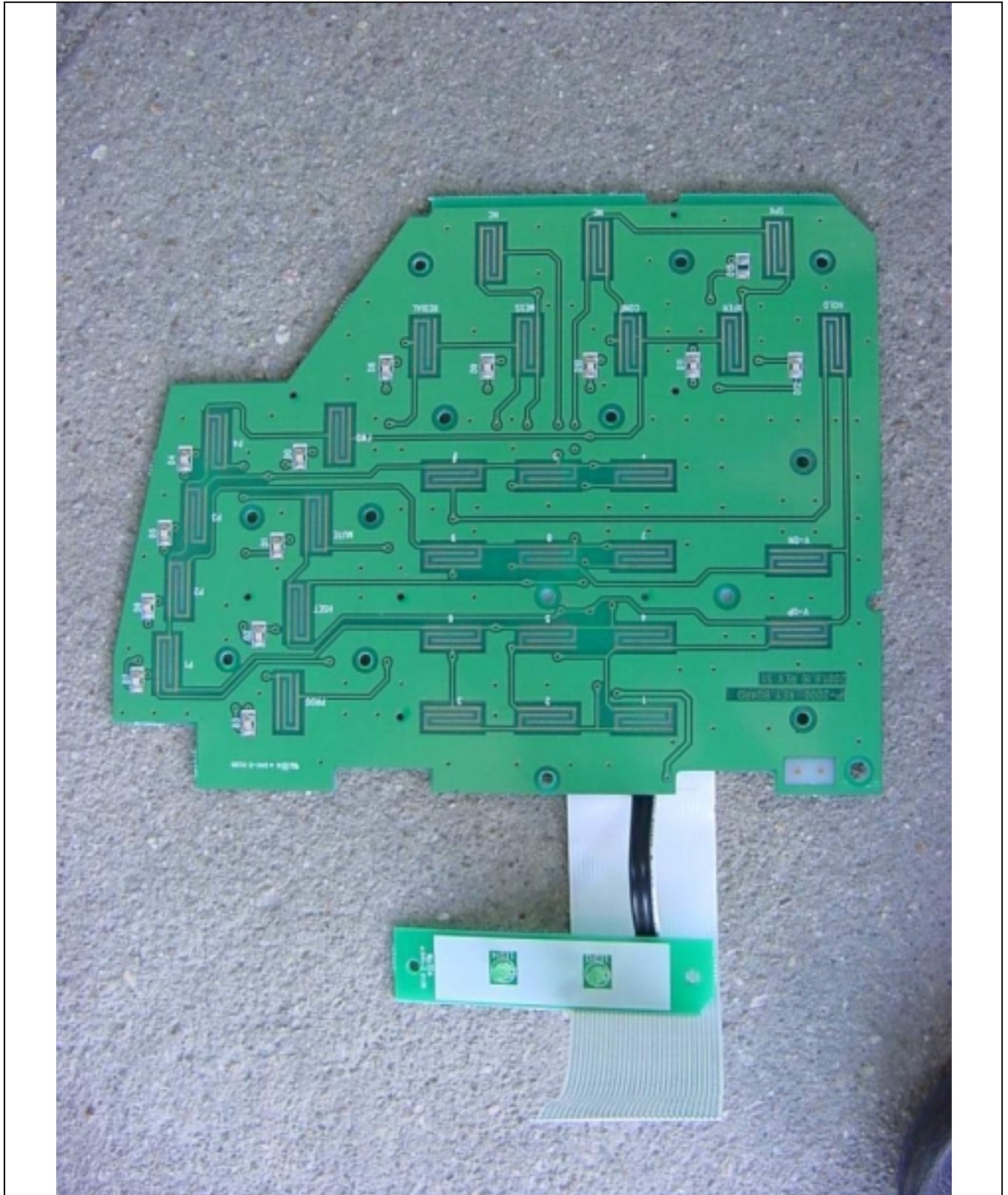


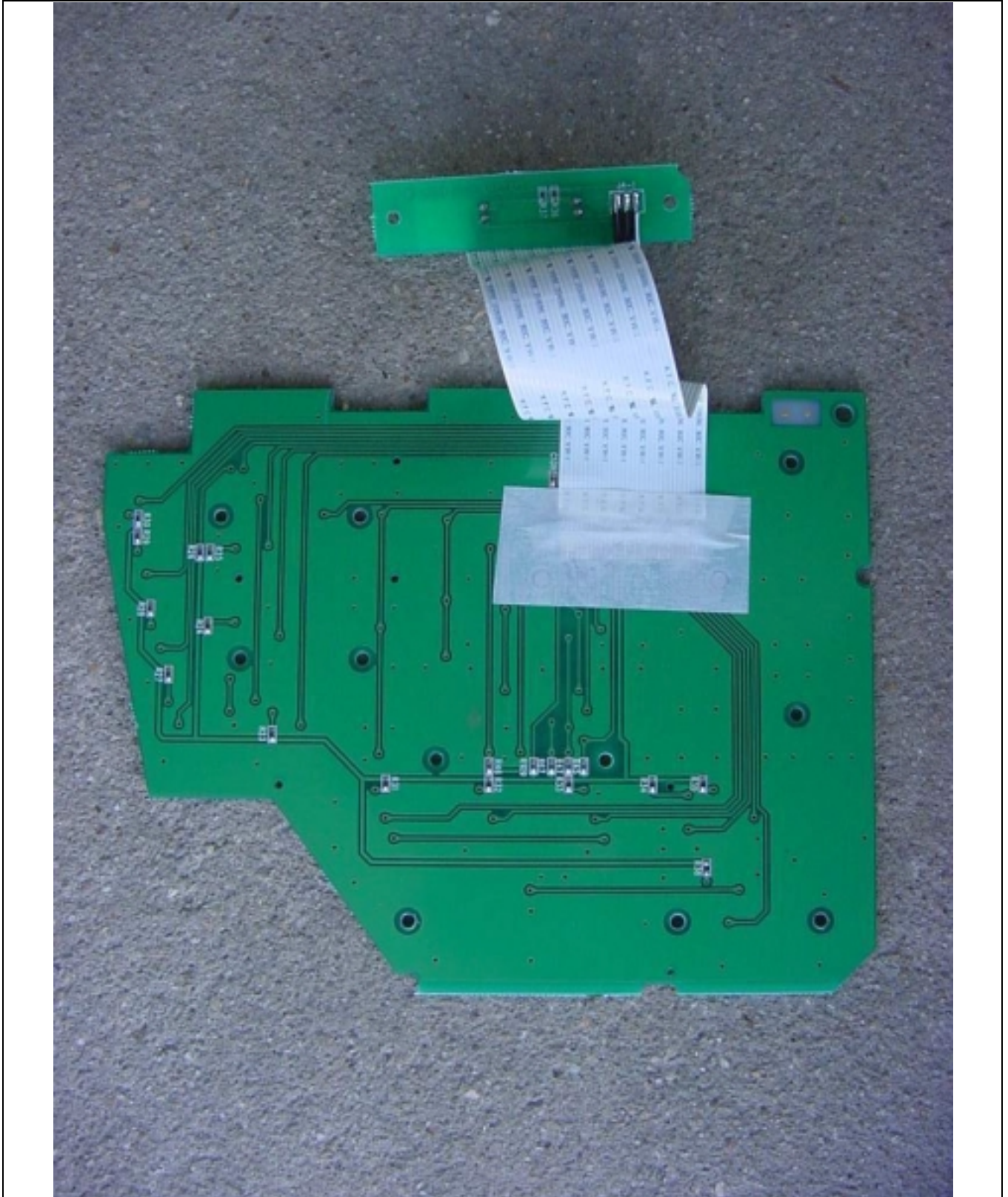
This report shall not be reproduced except in full without our written approval.

FCC-003 (Rev.0)

**HEAD OFFICE** : #505 SK APT. Factory 223-28, Sangdaewon 1 Dong, Jungwon-Gu, Seongnam-City, Kyunggi-Do, 462-121, Korea  
(TEL: 82-31-746-8500 FAX: 82-31-746-8700)

**EMC Testing Dept** : 426-1 Daessangryung-Ri, Chowol-Myun, Kwangju-City, Kyunggi-Do 464-860 Korea. (TEL: 82-31-765-8289 FAX: 82-31-766-2904)





This report shall not be reproduced except in full without our written approval.

FCC-003 (Rev.0)

**HEAD OFFICE** : #505 SK APT. Factory 223-28, Sangdaewon 1 Dong, Jungwon-Gu, Seongnam-City, Kyunggi-Do, 462-121, Korea  
(TEL: 82-31-746-8500 FAX: 82-31-746-8700)

**EMC Testing Dept** : 426-1 Daessangryung-Ri, Chowol-Myun, Kwangju-City, Kyunggi-Do 464-860 Korea. (TEL: 82-31-765-8289 FAX: 82-31-766-2904)

