

INSTALATION MANUAL

- Installing System

Installation has to be carried out by a qualified installer. Please see Diagram 1 for installation detail. Mounting the system Terminal at a place that's dry and hard to access, and avoiding high temperture area.

The relay should be installed in a place not easily be found. After Installation is completed, carefully check if all the wires are correctly connected before connecting power to main unit.

- Installing the Reading Coil Antenna

The reading coil antenna has multi layer ring that can be peel off according to the size of the lock cylinder dimension. Place the ring around the lock cylinder. The distance between ring and SHIDUN key should not be more than 3 cm.

- Installing The Code Chip Onto The Key Cover

Separate the key covers. Trim the key head as needed to fit into key cover glues both sides together. (Hot melt glue is recommended)

Terminal Installation Diagram

Note:

1. The purple wire should be connected to "ON" of the ignition switch. When the car key turns to "START", this line should have constant 12V output.
2. As this system has Immobilizer function, the two relays should be installed.
2. The blue wire should be connected to door pin switch.

Central door Lock Installation Diagram

Diagram 2A Interior System Control principle

Diagram 2B Positive /Nagative trigger

Diagram 2C Negative Trigger

Diagram 2D Positive Trigger

Diagram 2E Connecting Diagram for vacuum Lock Type

Problem and Dealing Method in system Installation

Problem	check
Siren is on	<ol style="list-style-type: none"> 1. Checking if the wires are connected correctly as per the installation diagram; 2. If the ignition is in ON position. And the code chip is installed in the key.
After installation the Terminal has no response and the remote controller cannot work or cannot identify the key code	<ol style="list-style-type: none"> 1. Checking if the wires are connected correctly as per the installation diagram; 2. If the fuse of the Terminal power source is burned and find out the reason; 3. If the car battery has enough voltage
The key is in ON position and can identify key code, but cannot start the car	<ol style="list-style-type: none"> 1. Check if the relay control wires are correctly connected.
The key is in ON position and cannot identify key code the siren stay on.	<ol style="list-style-type: none"> 1. If the readers coil plug is correctly plug in. 2. If the distance between readers coil and key handle exceeding 3cm. 3. If there is any metal between the reader coil and the code chip.
After the door is locked, the siren stays on.	<ol style="list-style-type: none"> 1. Check if the door switches are correctly wire.
The remote control distance is too short	<ol style="list-style-type: none"> 1. If the battery voltage is lowered than 4.8V 2. Adjust the location of the receiving antenna

Manufactured by Shenzhen Fenghongda Investment Co. Ltd

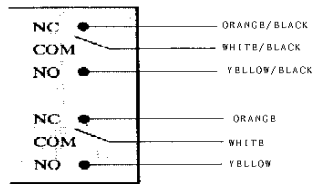


DIAGRAM 2A

SYSTEM CONTROL
INSIDE

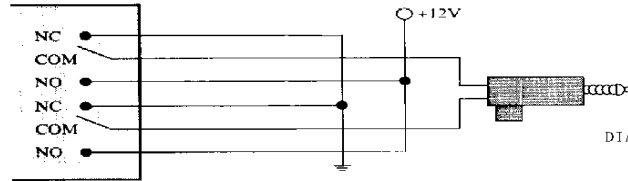


DIAGRAM 2 B

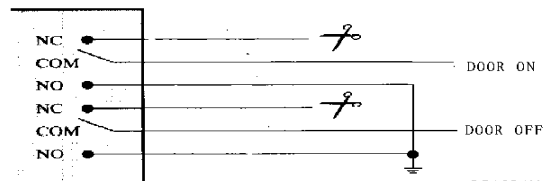


DIAGRAM 2 C

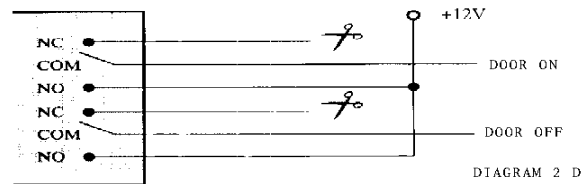
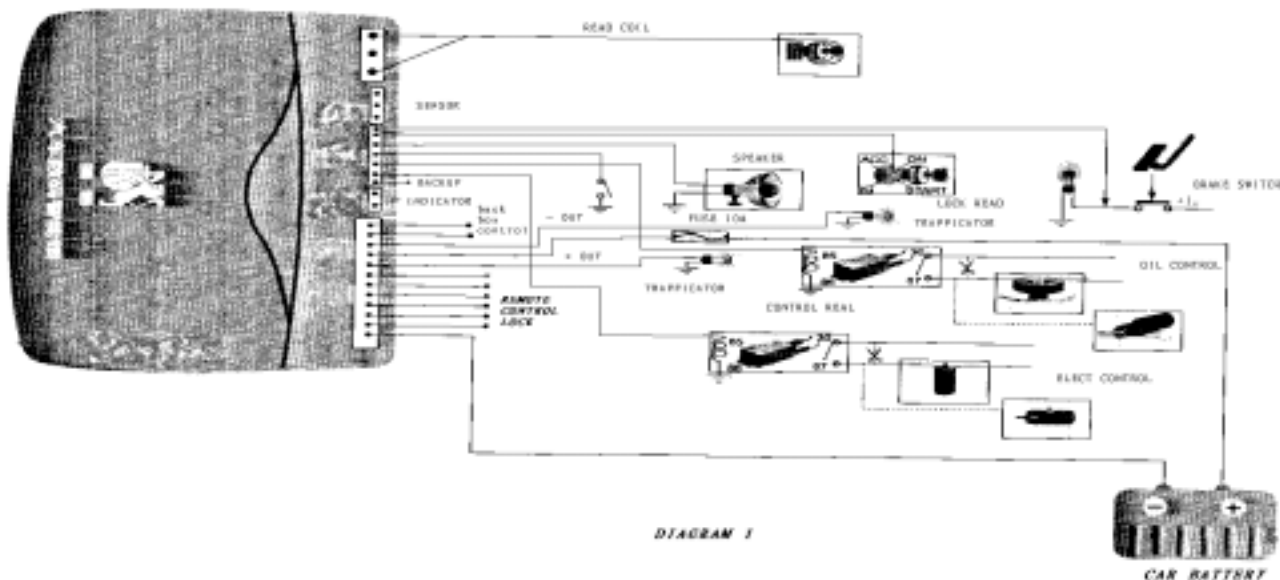


DIAGRAM 2 D



Section 15.105(b) of the FCC rules and regulations stipulates the following:

For a Class B digital device or peripheral, the instructions furnished by the user shall include the following or similar statement, placed in a prominent location in the text of the manual:

FCC Notice

This device has been tested and found to comply with the limits for a Class B digital device, pursuant to Part 15 of the FCC Rules. These limits are designed to provide reasonable protection against harmful interference in a residential installation. This device generates, uses, and can radiate radio frequency energy and, if installed and used in accordance with the instruction, may cause harmful interference to radio communications. However, there is no guarantee that interference will not occur in a particular installation. If this device does cause harmful interference to radio or television reception, the user is encouraged to try to correct the interference by one or more of the following measures:

- Reorient or relocate the receiving antenna.
- Increase the separation between the computer and receiver.
- Connect the computer into an outlet on a circuit different from that to which the receiver is connected.
- Consult the dealer or an experienced radio/TV technician for help.

Caution: Any changes or modifications not expressly approved by the grantee of this device could void the user's authority to operate the equipment.

FCC Compliance Statement

This device complies with Part 15 of the FCC Rules. Operation is subject to the following two conditions:

(1) This device may not cause harmful interference and (2) this device must accept any interference received, including interference that may cause undesired operation.