



<b>Prüfbericht-Nr.:</b> <i>Test Report No.:</i>	<b>CN229SI1 002</b>	<b>Auftrags-Nr.:</b> <i>Order No.:</i>	<b>158257671</b>	<b>Seite 1 von 14</b> <i>Page 1 of 14</i>	
<b>Kunden-Referenz-Nr.:</b> <i>Client Reference No.:</i>	<b>N/A</b>	<b>Auftragsdatum:</b> <i>Order date:</i>	<b>08.08.2022</b>		
<b>Auftraggeber:</b> <i>Client:</i>	<b>Kidztech Toys Manufacturing Ltd.</b> <b>Rm 802 Inter-Continental Plaza, 94 Granville Rd, TST East, HK</b>				
<b>Prüfgegenstand:</b> <i>Test item:</i>	<b>Short Range Device - Remote Control Toy Transmitter (2.4GHz)</b>				
<b>Bezeichnung / Typ-Nr.:</b> <i>Identification / Type No.:</i>	<b>84087; 84088; 84089</b>				
<b>Auftrags-Inhalt:</b> <i>Order content:</i>	<b>FCC Certification</b>				
<b>Prüfgrundlage:</b> <i>Test specification:</i>	<b>FCC Part 15 Subpart C, ANSI C63.10-2013</b>				
<b>Wareneingangsdatum:</b> <i>Date of receipt:</i>	<b>16.08.2022</b>				
<b>Prüfmuster-Nr.:</b> <i>Test sample No.:</i>	<b>A003319649-001</b>				
<b>Prüfzeitraum:</b> <i>Testing period:</i>	<b>23.08.2022 - 02.09.2022</b>				
<b>Ort der Prüfung:</b> <i>Place of testing:</i>	<b>Hong Kong</b>				
<b>Prüflaboratorium:</b> <i>Testing laboratory:</i>	<b>TÜV Rheinland Hong Kong Ltd.</b>				
<b>Prüfergebnis*:</b> <i>Test result*:</i>	<b>Pass</b>				
<b>geprüft von / tested by:</b>		<b>kontrolliert von / reviewed by:</b>			
					
27.09.2022	Eddy Tsang / Engineer	27.09.2022	Sharon Li / Unit Senior Manager		
<b>Datum</b> <i>Date</i>	<b>Name / Stellung</b> <i>Name / Position</i>	<b>Unterschrift</b> <i>Signature</i>	<b>Datum</b> <i>Date</i>	<b>Name / Stellung</b> <i>Name / Position</i>	<b>Unterschrift</b> <i>Signature</i>
<b>Sonstiges / Other:</b> FCC ID: OTM-8408722-24GTX					
This report 002 is prepared for typo correction on Nominal Voltage. “Decision Rule” document announced in our website ( <a href="https://www.tuv.com/landingpage/en/qm-gcn/">https://www.tuv.com/landingpage/en/qm-gcn/</a> ) describes the statement of conformity and its rule of enforcement for test results are applicable throughout this test report.					
<b>Zustand des Prüfgegenstandes bei Anlieferung:</b> <i>Condition of the test item at delivery:</i>		<b>Prüfmuster vollständig und unbeschädigt</b> <i>Test item complete and undamaged</i>			
<p>* Legende: 1 = sehr gut      2 = gut      3 = befriedigend      4 = ausreichend      5 = mangelhaft  P(ass) = entspricht o.g. Prüfgrundlage(n)      F(ail) = entspricht nicht o.g. Prüfgrundlage(n)      N/A = nicht anwendbar      N/T = nicht getestet</p> <p>Legend: 1 = very good      2 = good      3 = satisfactory      4 = sufficient      5 = poor  P(ass) = passed a.m. test specification(s)      F(ail) = failed a.m. test specification(s)      N/A = not applicable      N/T = not tested</p>					
<p><b>Dieser Prüfbericht bezieht sich nur auf das o.g. Prüfmuster und darf ohne Genehmigung der Prüfstelle nicht auszugsweise vervielfältigt werden. Dieser Bericht berechtigt nicht zur Verwendung eines Prüfzeichens.</b>  <i>This test report only relates to the a. m. test sample. Without permission of the test center this test report is not permitted to be duplicated in extracts. This test report does not entitle to carry any test mark.</i></p>					

## Table of Content

### Page

<b>Cover Page</b> .....	<b>1</b>
<b>Table of Content</b> .....	<b>2</b>
<b>Product information</b> .....	<b>3</b>
Manufacturers declarations .....	3
Product function and intended use .....	3
Submitted documents.....	3
Independent Operation Modes .....	3
Related Submittal(s) Grants .....	3
Remark .....	3
<b>Test Set-up and Operation Mode</b> .....	<b>4</b>
Principle of Configuration Selection .....	4
Test Operation and Test Software .....	4
Special Accessories and Auxiliary Equipment .....	4
<b>Test Methodology</b> .....	<b>5</b>
Radiated Emission .....	5
Field Strength Calculation.....	5
<b>Test Setup Diagram</b> .....	<b>6</b>
<b>Test Facility</b> .....	<b>7</b>
Test Laboratory Information .....	7
<b>List of Test and Measurement Instruments</b> .....	<b>8</b>
<b>Measurement Uncertainty</b> .....	<b>9</b>
<b>Results FCC Part 15 – Subpart C</b> .....	<b>10</b>
FCC 15.203 – Antenna Requirement 1 .....	Pass..... 10
FCC 15.204 – Antenna Requirement 2 .....	Pass..... 10
FCC 15.207 – Conducted Emission on AC Mains .....	N/A..... 10
FCC 15.215 (c) – 20 dB Bandwidth .....	Pass..... 11
FCC 15.249(a) – Field Strength of Fundamental and Harmonics .....	Pass..... 12
FCC 15.249(d), 15.205 – Out Of Band Radiated Emission.....	Pass..... 14
Appendix 1 – Test protocols .....	3 pages
Appendix 2 – Test setup .....	3 pages
Appendix 3 – EUT External Photos .....	4 pages
Appendix 4 – EUT Internal Photos .....	5 pages
Appendix 5 – RF exposure information.....	2 pages

## Product information

### Manufacturers declarations

	<b>Transmitter</b>
Operating frequency range	2410 - 2473MHz
Type of modulation	GFSK
Number of channels	64
Type of antenna	Fixed Integral wire antenna
Power level	fix
Connection to public utility power line	No
Nominal voltage	4.5 VDC

### Product function and intended use

The equipment under test (EUT) is a radio control toy transmitter operating at 2.4GHz. It is powered by battery only.

FCC ID: OTM-8408722-24GTX

<b>Models</b>	<b>Product description</b>
84087; 84088; 84089	Short Range Device - Remote Control Toy Transmitter (2.4GHz)

### Submitted documents

Nil

### Independent Operation Modes

The basic operation modes are:

- Transmitting mode.

For further information refer to User Manual

### Related Submittal(s) Grants

This is a single application for certification of the transmitter.

### Remark

The test results in this test report are only relevant to the tested sample and does not involve any assessment in the production.

## Test Set-up and Operation Mode

### Principle of Configuration Selection

**Emission:** The equipment under test (EUT) was configured to measure its highest possible radiation level. The test modes were adapted accordingly in reference to the instructions for use.

### Test Operation and Test Software

Test operation should refer to test methodology.

- Test mode samples with maximum RF output power and duty cycle and capable to transmit continuously at the lowest, middle and highest frequency channels is provided by the applicant for the testing.

### Special Accessories and Auxiliary Equipment

The product has been tested together with the following additional accessories:

- None

## Test Methodology

### Radiated Emission

The radiated emission measurements of the transmitter part were performed according to the procedures in ANSI C63.10-2013.

For measurement below 1GHz - the equipment under test (EUT) was placed at the middle of the 80 cm height turntable. For measurement above 1GHz - the EUT was placed at the middle of the 1.5 m height turntable and RF absorbing material was placed on ground plane between turntable and measuring antenna. During the testing, the EUT was operated standalone and arranged for maximum emissions. The EUT was tested in three orthogonal planes.

The investigation is performed with the EUT rotated 360°, the antenna height scanned between 1m and 4m, and the antenna rotated to repeat the measurements for both the horizontal and vertical antenna polarizations. Repeat the measurement steps until the maximum emissions were obtained.

All radiated tests were performed at an antenna to EUT with 3 meters distance, unless stated otherwise in particular parts of this test report.

### Field Strength Calculation

The field strength at 3 m was established by adding the meter reading of the spectrum analyzer to the factors associated with antenna correction factor, cable loss, preamplifiers and filter attenuation.

The equation is expressed as follow:

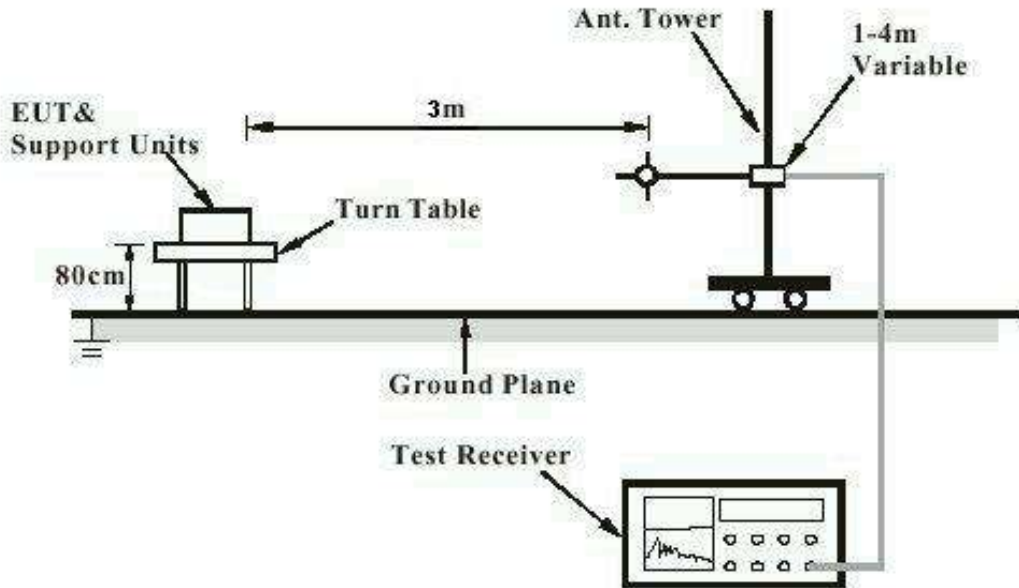
$$FS = R + AF + CF + FA - PA$$

Where FS = Field Strength in dBuV/m at 3 meters.  
R = Reading of Spectrum Analyzer in dBuV.  
AF = Antenna Factor in dB.  
CF = Cable Attenuation Factor in dB.  
FA = Filter Attenuation Factor in dB.  
PA = Preamplifier Factor in dB.

FA and PA are only be used for the measuring frequency above 1 GHz.

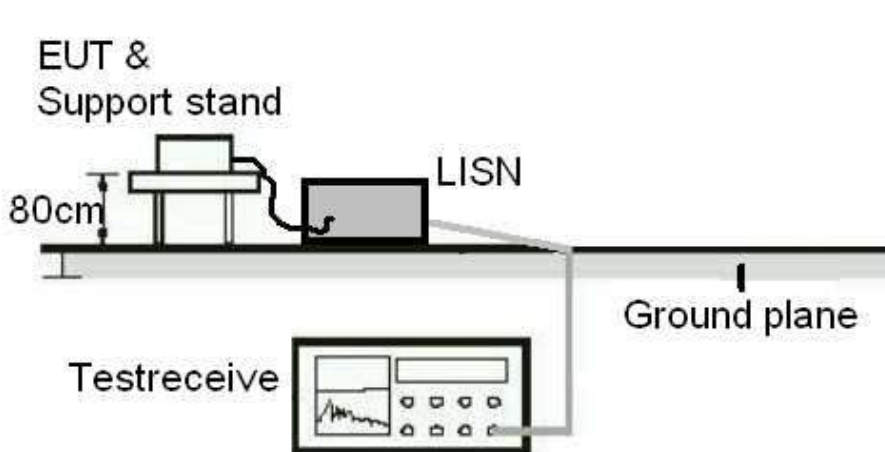
## Test Setup Diagram

Diagram of Measurement Configuration for Radiation Test



Note: Measurements above 1 GHz are done with a table height of 1.5m. In addition, there is RF absorbing material on the floor of the test site for above 1GHz measurement.

Diagram of Measurement Equipment Configuration for Mains Conduction Measurement (if applicable)



## Test Facility

### Test Laboratory Information

TÜV Rheinland Hong Kong Ltd.

Address: 3-4/F, Fou Wah Industrial Building, 10-16 Pun Shan Street, Tsuen Wan, N.T., Hong Kong

Tel.: +852 2192 1000

Fax: +852 2192 1001

Email [service-gc@tuv.com](mailto:service-gc@tuv.com)

The test facility is recognized or accredited by the following organizations:

#### FCC

Test Firm Registration Number : 371735

#### ISED/IC

Test Site Registration Number : 26152

## List of Test and Measurement Instruments

### Radiated Emission

Equipment	Manufacturer	Type	Cal. Date	Due Date
Semi-anechoic Chamber	Frankonia	Nil	5-Mar-22	5-Mar-23
Test Receiver	R & S	ESW44	7-Oct-21	7-Oct-22
Active Loop Antenna	EMCO	6502	3-Nov-20	3-Nov-22
Bi-conical Antenna	R & S	HK116	15-Sep-20	15-Sep-22
Log Periodic Antenna	R & S	HL223	15-Sep-20	15-Sep-22
Standard Gain Horn	ETS-Lindgren	3160-07	24-Nov-20	24-Nov-22
Standard Gain Horn	ETS-Lindgren	3160-08	24-Nov-20	24-Nov-22
Standard Gain Horn	ETS-Lindgren	3160-10	30-Oct-20	30-Oct-22
Double-Ridged Waveguide Horn	EMCO	3116	30-Oct-20	30-Oct-22
Double-Ridged Waveguide Horn	EMCO	3117	11-Nov-20	11-Nov-22
Coaxial cable	Harbour	SF118/11n/11n/ 12000.0	3-Aug-22	3-Aug-24
High Frequency Cable	Pasternack	PE3VNA4001-3M	29-Jan-21	29-Jan-23
Microwave amplifier 0.5-26.5GHz, 25dB gain	COM-POWER Corporation	PAM-118A	5-Mar-22	5-Mar-23
Preamplifier 18GHz to 40GHz with cable (EMC656)	A.H. Systems, Inc.	PAM-1840VH	29-Jan-22	29-Jan-23
High Pass Filter (cutoff freq. =1000MHz)	Trilithic	23042	30-Oct-21	30-Oct-22

### Radio Test

Equipment	Manufacturer	Type	Cal. Date	Due Date
Signal and Spectrum Analyzer	R & S	FSP30	09-Nov-21	09-Nov-22



## Measurement Uncertainty

The estimated combined standard uncertainty for power-line conducted emissions measurements is  $\pm 2.42$ dB.

The estimated combined standard uncertainty for radiated emissions measurements is  $\pm 4.81$ dB (9kHz to 30MHz) and  $\pm 4.62$ dB (30MHz to 200MHz) and  $\pm 5.67$ dB (200MHz to 1000MHz) and is  $\pm 5.07$ dB (1GHz to 8.2GHz) and  $\pm 4.58$ dB (8.2GHz to 12.4GHz) and  $\pm 4.78$ dB (12.4GHz to 18GHz)

The reported expanded uncertainty of measurement is stated as the standard uncertainty of measurement multiplied by the coverage factor of  $k=2$ , which for the level of confidence is approximately 95%.

## Results FCC Part 15 – Subpart C

<b>FCC 15.203 – Antenna Requirement 1</b>		<b>Pass</b>
<b>FCC Requirement:</b> No antenna other than that furnished by the responsible party shall be used with the device		
<b>Results:</b>	a) Antenna type:	Fixed Integral wire antenna
	b) Manufacturer and model no:	N/A
	c) Peak Gain:	0 dBi
<b>Verdict:</b>	Pass	
<b>FCC 15.204 – Antenna Requirement 2</b>		<b>Pass</b>
<b>FCC Requirement:</b> An intentional radiator may be operated only with the antenna with which it is authorized. If an antenna is marketed with the intentional radiator, it shall be of a type which is authorized with the intentional radiator.		
<b>Results:</b>	Only one integral antenna can be used.	
<b>Verdict:</b>	Pass	
<b>FCC 15.207 – Conducted Emission on AC Mains</b>		<b>N/A</b>
There is no AC power input or output ports on the EUT.		

FCC 15.215 (c) – 20 dB Bandwidth		Pass		
Test Specification : ANSI C63.10 – 2013 Test date : 02.09.2022 Mode of operation : Tx mode Port of testing : Antenna port Supply voltage : 4.5 VDC Temperature : 23°C Humidity : 50%				
Requirement: The intentional radiators must be designed to ensure that the 20dB bandwidth of the emission, is contained within the frequency band designated in the rule section under which the equipment is operated.				
Results: Pre-scan has been conducted to determine the worst-case mode from all possible combinations between available modulations and packet types.  For test protocols refer to Appendix 1.				
Frequency (MHz)	20 dB left (MHz)	Limit (MHz)	20 dB right (MHz)	Limit (MHz)
2410	2409.240	> 2400	2410.767	< 2483.5
2442	2441.233	> 2400	2442.774	< 2483.5
2473	2472.233	> 2400	2473.774	< 2483.5

<b>FCC 15.249(a) – Field Strength of Fundamental and Harmonics</b>		<b>Pass</b>
Test Specification : ANSI C63.10 – 2013 Test date : 23.08.2022 Mode of operation : Tx mode Port of testing : Enclosure Frequency range : 9kHz – 25GHz Supply voltage : 4.5 VDC Temperature : 24°C Humidity : 52%		
Requirement: The field strength of emissions from intentional radiators operated within these frequency bands shall comply with the following limit.		
<b>Results:</b> PASS.		
Fundamental Frequency 2410MHz		Vertical Polarization
Frequency MHz	Level dBuV/m	Limit / Detector dBuV/m
2410.368	98.3	114.0 / PK
2410.368	74.0	94.0 / AV
Fundamental Frequency 2410MHz		Horizontal Polarization
Frequency MHz	Level dBuV/m	Limit / Detector dBuV/m
2410.368	101.4	114.0 / PK
2410.368	77.0	94.0 / AV
Harmonics 2410MHz		Vertical Polarization
Frequency MHz	Level dBuV/m	Limit / Detector dBuV/m
4820.032	61.9	74.0 / PK
4820.032	35.8	54.0 / AV
Harmonics 2410MHz		Horizontal Polarization
Frequency MHz	Level dBuV/m	Limit / Detector dBuV/m
4820.032	66.6	74.0 / PK
4820.032	39.6	54.0 / AV
7230.032	69.0	74.0 / PK
7230.032	39.7	54.0 / AV

Fundamental Frequency 2442MHz			Vertical Polarization		
<b>Frequency MHz</b>	<b>Level dBuV/m</b>	<b>Limit / Detector dBuV/m</b>			
2442.016	98.3	114.0 / PK			
2442.016	74.5	94.0 / AV			
Fundamental Frequency 2442MHz			Horizontal Polarization		
<b>Frequency MHz</b>	<b>Level dBuV/m</b>	<b>Limit / Detector dBuV/m</b>			
2442.016	98.3	114.0 / PK			
2442.016	74.6	94.0 / AV			
Harmonics 2442MHz			Vertical Polarization		
<b>Frequency MHz</b>	<b>Level dBuV/m</b>	<b>Limit / Detector dBuV/m</b>			
4884.748	56.6	74.0 / PK			
4884.748	30.1	54.0 / AV			
7327.105	60.4	74.0 / PK			
7327.105	36.3	54.0 / AV			
Harmonics 2442MHz			Horizontal Polarization		
<b>Frequency MHz</b>	<b>Level dBuV/m</b>	<b>Limit / Detector dBuV/m</b>			
4884.748	57.1	74.0 / PK			
4884.748	31.9	54.0 / AV			
7327.116	64.0	74.0 / PK			
7327.116	38.9	54.0 / AV			
Fundamental Frequency 2473MHz			Vertical Polarization		
<b>Frequency MHz</b>	<b>Level dBuV/m</b>	<b>Limit / Detector dBuV/m</b>			
2473.378	98.2	114.0 / PK			
2473.378	72.8	94.0 / AV			
Fundamental Frequency 2473MHz			Horizontal Polarization		
<b>Frequency MHz</b>	<b>Level dBuV/m</b>	<b>Limit / Detector dBuV/m</b>			
2473.378	100.5	114.0 / PK			
2473.378	75.1	94.0 / AV			
Harmonics 2473MHz			Vertical Polarization		
<b>Frequency MHz</b>	<b>Level dBuV/m</b>	<b>Limit / Detector dBuV/m</b>			
4946.756	59.7	74.0 / PK			
4946.756	34.7	54.0 / AV			
7420.134	63.0	74.0 / PK			
7420.134	37.8	54.0 / AV			
Harmonics 2473MHz			Horizontal Polarization		
<b>Frequency MHz</b>	<b>Level dBuV/m</b>	<b>Limit / Detector dBuV/m</b>			
4946.756	59.7	74.0 / PK			
4946.756	34.5	54.0 / AV			
7420.134	62.2	74.0 / PK			
7420.134	37.7	54.0 / AV			

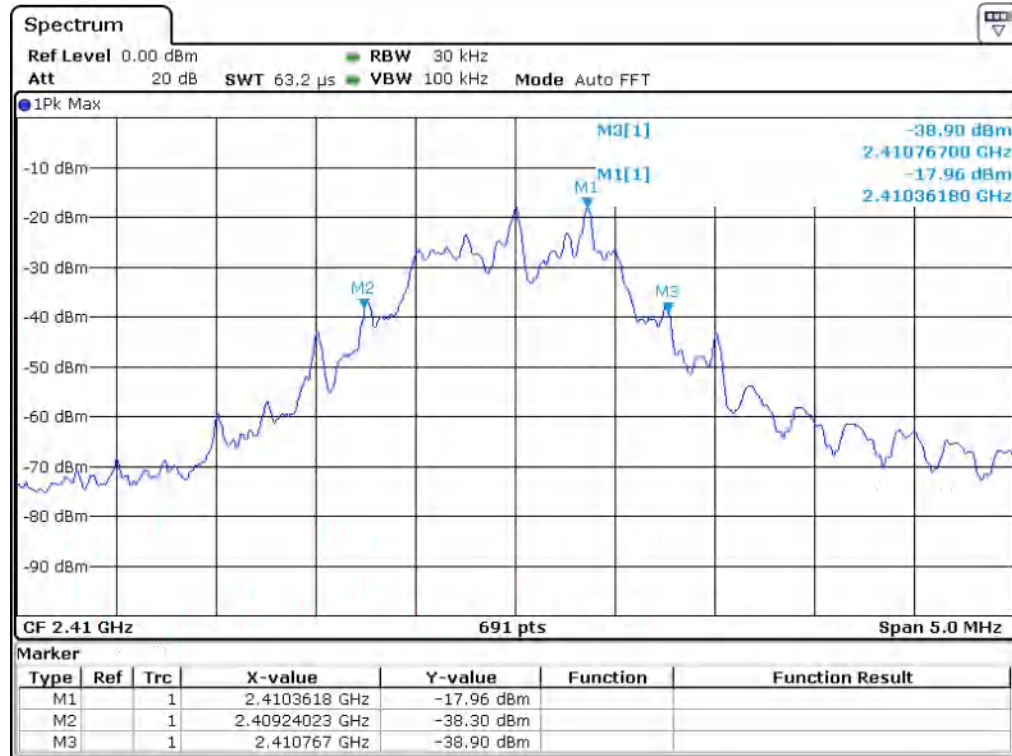
<b>FCC 15.249(d), 15.205 – Out Of Band Radiated Emission</b>		<b>Pass</b>
Test Specification : ANSI C63.10 – 2013 Test date : 23.08.2022 Mode of operation : Tx mode Port of testing : Enclosure Frequency range : 9kHz – 25GHz Supply voltage : 4.5 VDC Temperature : 24°C Humidity : 55%		
<b>Requirement:</b> Emissions radiated outside of the specified frequency bands, except for harmonics, shall be attenuated by at least 50dB below the level of the fundamental or to the general radiated emission limits in Section 15.209, whichever is the lesser attenuation.		
<b>Results:</b> All three transmit frequency modes comply with the field strength limit of section 15.209. There is no spurious found below 30MHz.		
Tx frequency 2410MHz		Vertical Polarization
<b>Frequency MHz</b>	<b>Level dBuV/m</b>	<b>Limit / Detector dBuV/m</b>
2400.000	50.2	74.0 / PK
2400.000	22.1	54.0 / AV
Tx frequency 2410MHz		Horizontal Polarization
<b>Frequency MHz</b>	<b>Level dBuV/m</b>	<b>Limit / Detector dBuV/m</b>
2400.000	51.8	74.0 / PK
2400.000	22.5	54.0 / AV
Tx frequency 2442MHz		Vertical Polarization
<b>Frequency MHz</b>	<b>Level dBuV/m</b>	<b>Limit / Detector dBuV/m</b>
No peak found	---	74.0 / PK
No peak found	---	54.0 / AV
Tx frequency 2442MHz		Horizontal Polarization
<b>Frequency MHz</b>	<b>Level dBuV/m</b>	<b>Limit / Detector dBuV/m</b>
No peak found	---	74.0 / PK
No peak found	---	54.0 / AV
Tx frequency 2473MHz		Vertical Polarization
<b>Frequency MHz</b>	<b>Level dBuV/m</b>	<b>Limit / Detector dBuV/m</b>
2483.500	46.5	74.0 / PK
2483.500	22.4	54.0 / AV
2485.375	62.9	74.0 / PK
2485.375	39.0	54.0 / AV
Tx frequency 2473MHz		Horizontal Polarization
<b>Frequency MHz</b>	<b>Level dBuV/m</b>	<b>Limit / Detector dBuV/m</b>
2483.500	47.2	74.0 / PK
2483.500	22.5	54.0 / AV
2485.375	60.9	74.0 / PK
2485.375	37.3	54.0 / AV

# Appendix 1

## Test Results

## 20dB Bandwidth

Tx frequency: 2410MHz



Date: 2.SEP.2022 11:50:04

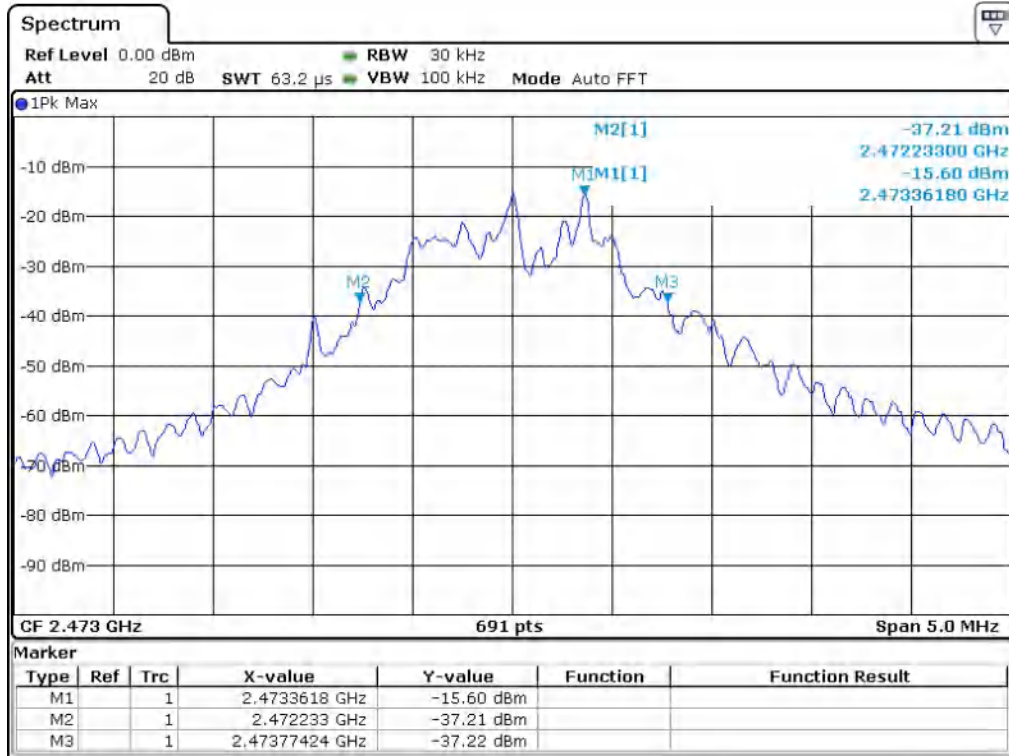
Tx frequency: 2442MHz



Date: 2.SEP.2022 11:45:03



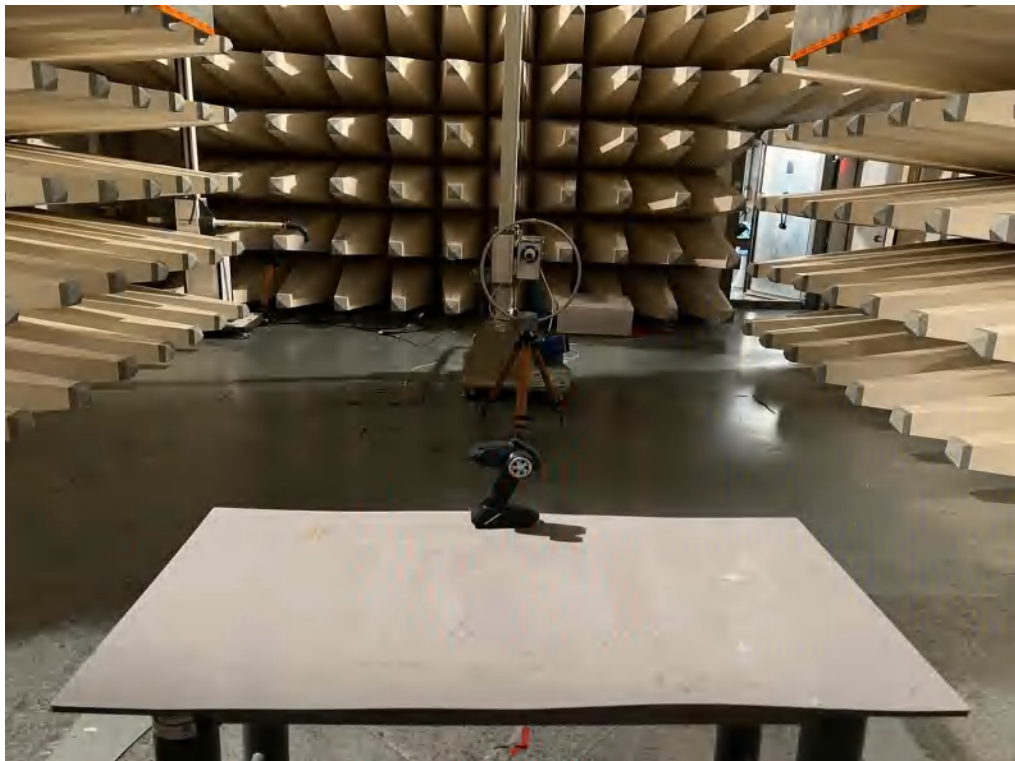
Tx frequency: 2473Hz



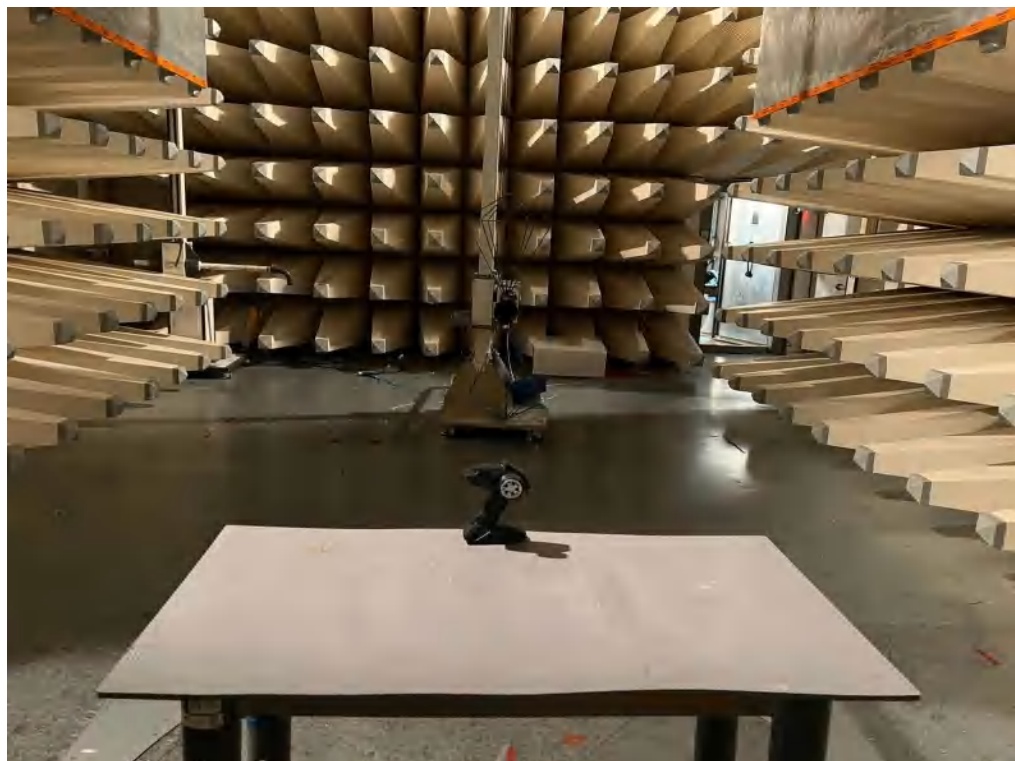
Date: 2 SEP. 2022 11:48:27

## **Appendix 2**

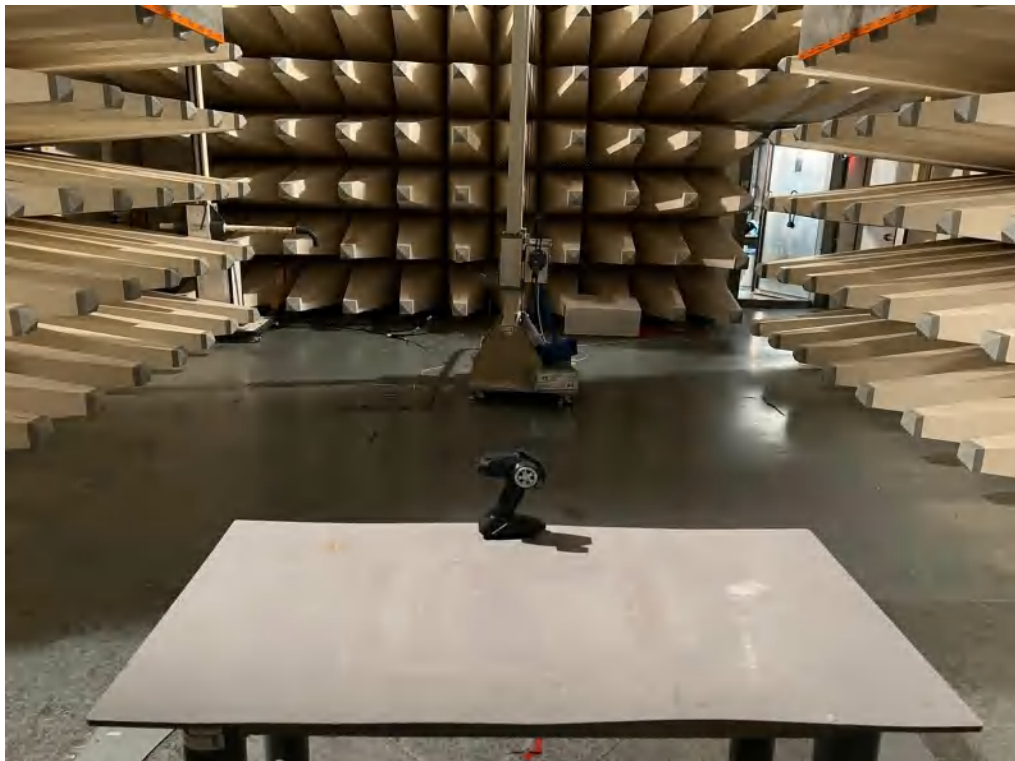
# **Test Setup Photos**



Set-up for Radiated Emission (9k-30MHz)



Set-up for Radiated Emission (30-200MHz)



Set-up for Radiated Emission (200-1000MHz)



Set-up for Radiated Emission (1GHz above)

# Appendix 3

## EUT External Photos

FCC ID: OTM-8408722-24GTX



External View



External View



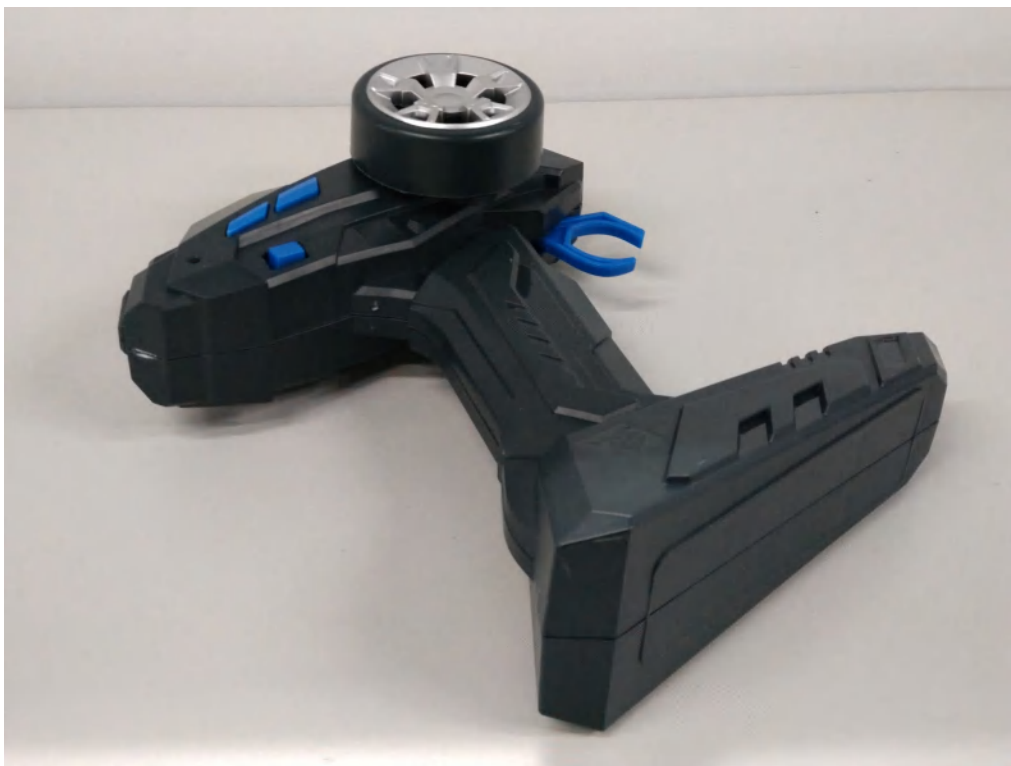
External View



External View



External View



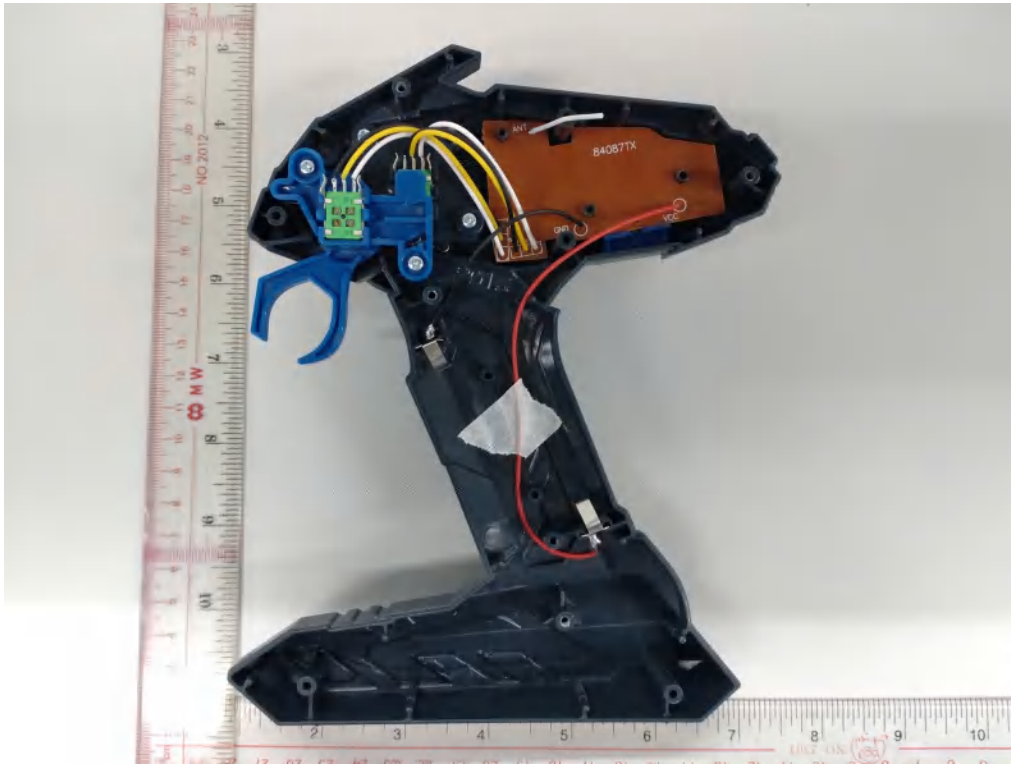
External View



# Appendix 4

## EUT Internal Photos

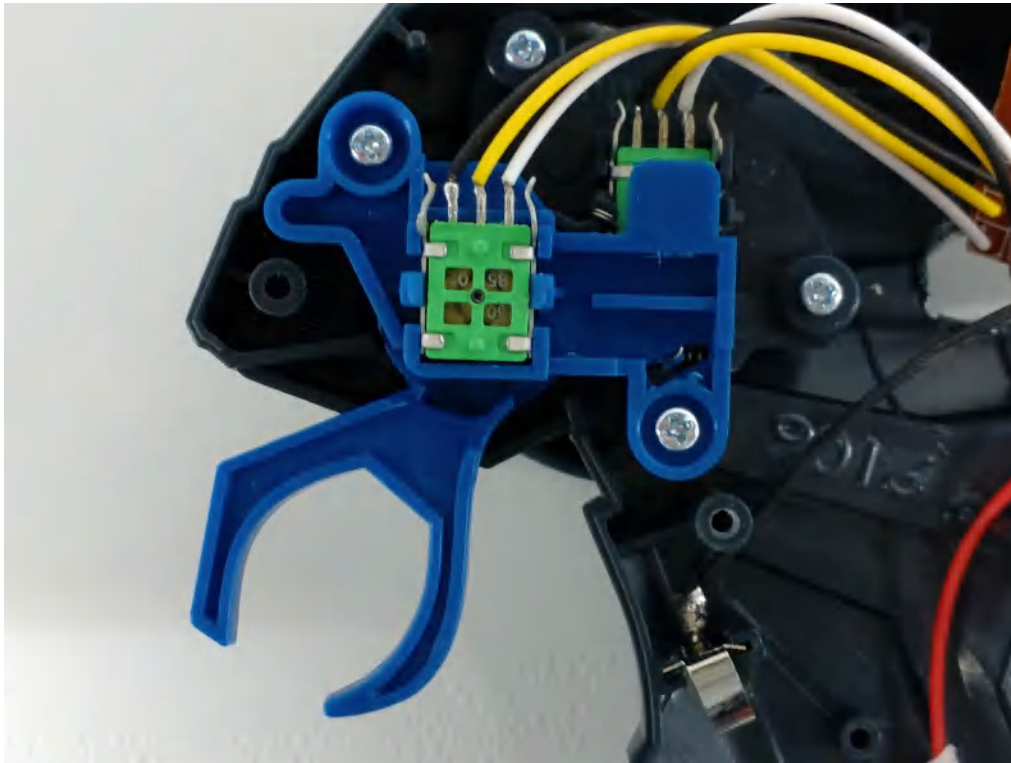
FCC ID: OTM-8408722-24GTX



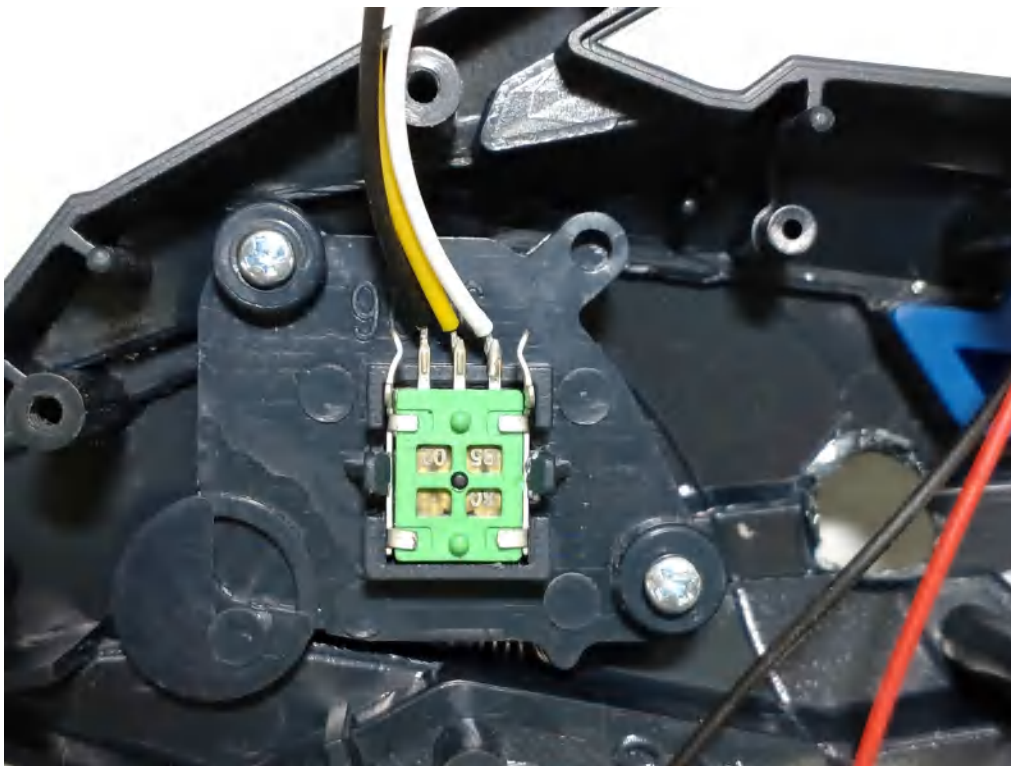
Internal View



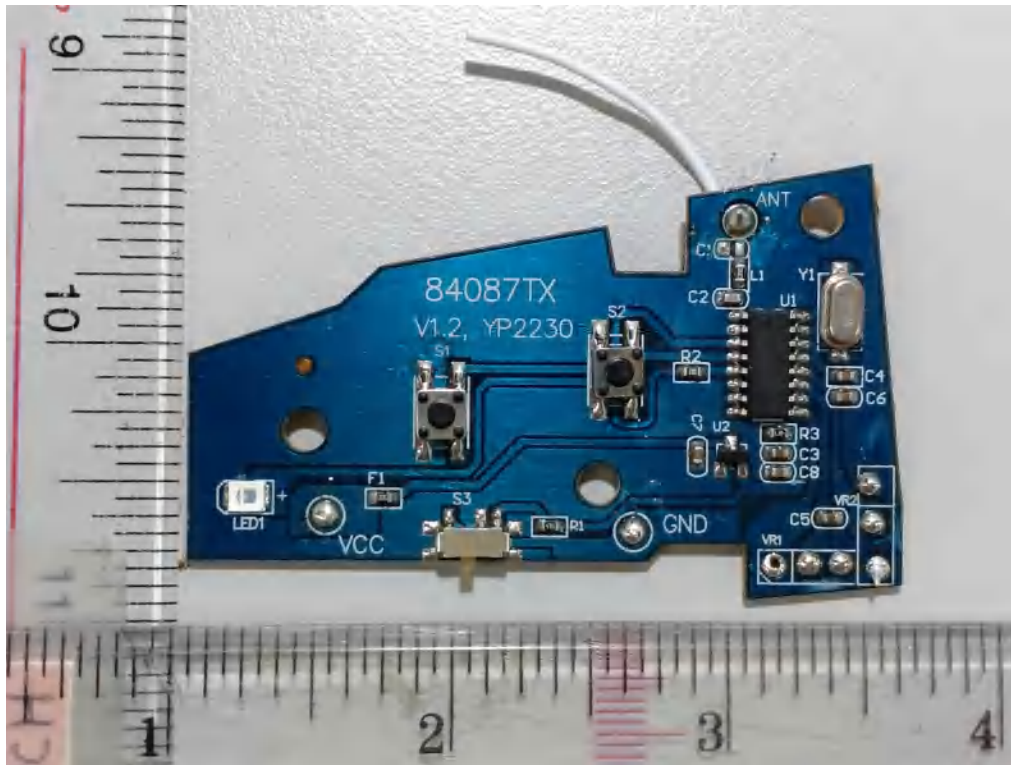
Internal View



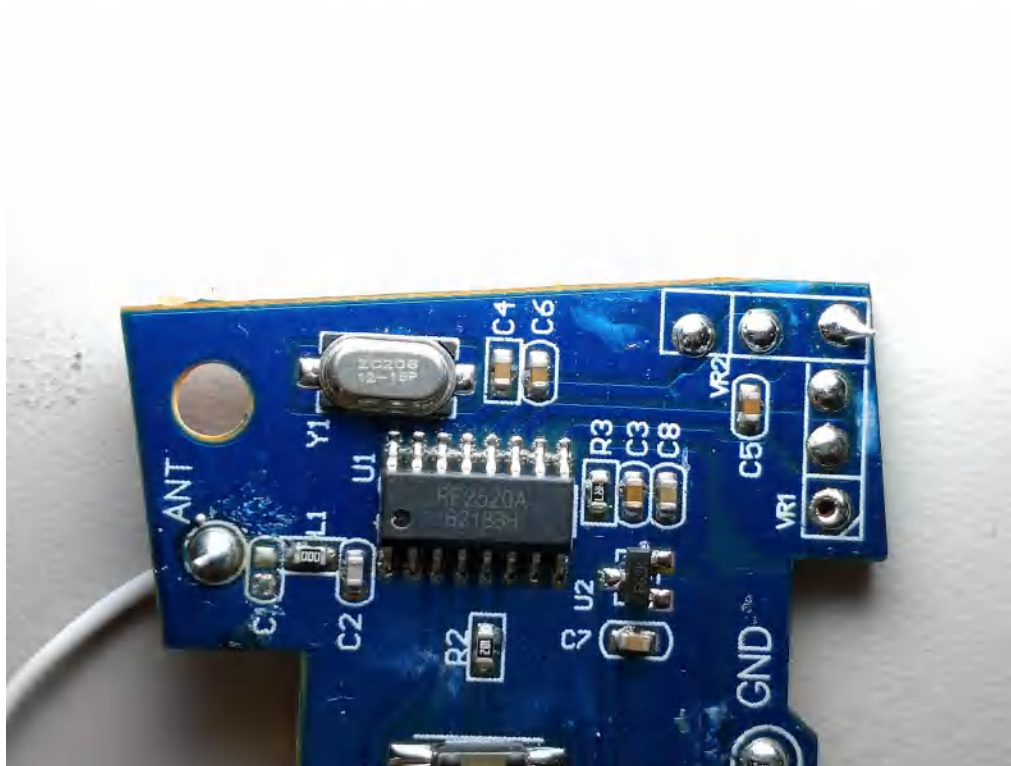
Internal View



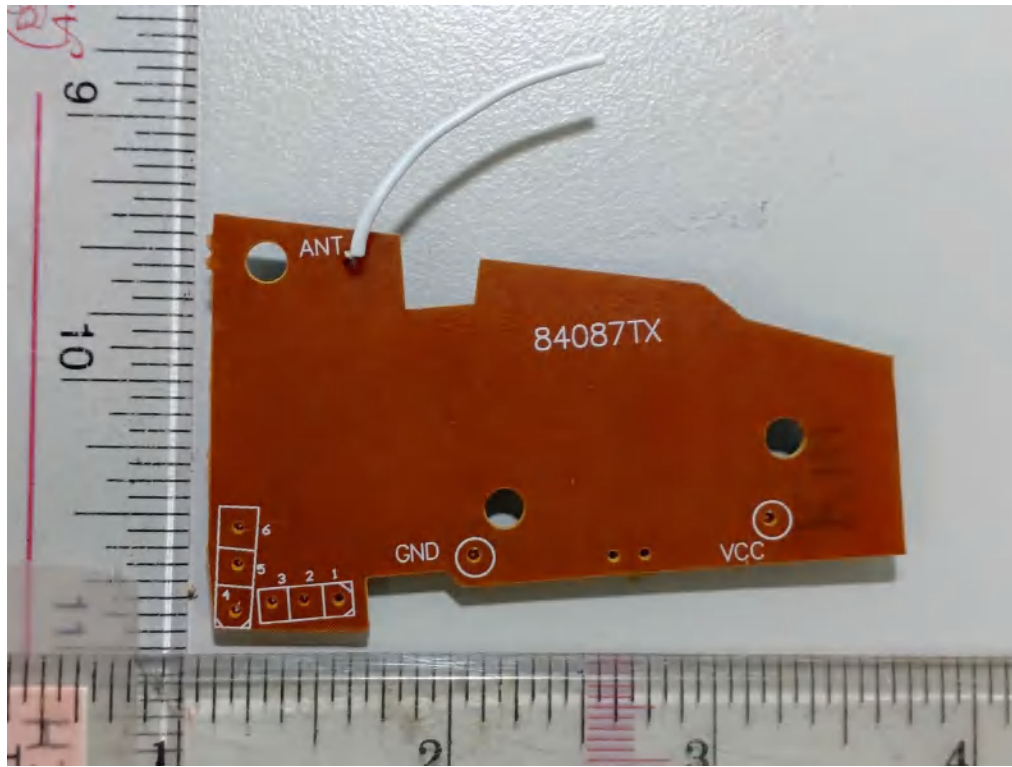
Internal View



Internal View



Internal View



Internal View

# Appendix 5

## RF Exposure Information

FCC ID: OTM-8408722-24GTX

**Maximum transmitter power:**

Frequency (MHz)	Maximum peak output power (dBm)	Output power (mW)
2410	6.17	4.14
2442	3.07	2.03
2473	5.27	3.37

Note: The maximum peak field strength was taken from table of "Subclause 15.249(a) – Field Strength of Fundamental and Harmonics".

**For FCC**

According to KDB 447498 D01:

The 1-g and 10-g SAR test exclusion thresholds for 100 MHz to 6 GHz at *test separation distances* ≤5 mm are determined by:

$[(\text{max. power of channel, including tune-up tolerance, mW}) / (\text{min. test separation distance, mm})] \cdot [\sqrt{f(\text{GHz})}] \leq 3.0$

for 1-g SAR and ≤7.5 for 10-g extremity SAR, where

- f(GHz) is the RF channel transmit frequency in GHz
- Power and distance are rounded to the nearest mW and mm before calculation
- The result is rounded to one decimal place for comparison
- 3.0 and 7.5 are referred to as the numeric thresholds in the step 2 below

**Result:**

$$(4.14/5) \cdot \sqrt{2410} = 1.285 < 3.0$$

$$(2.03/5) \cdot \sqrt{2442} = 0.634 < 3.0$$

$$(3.37/5) \cdot \sqrt{2473} = 1.060 < 3.0$$

**Conclusion:**

No SAR is required.