

hp

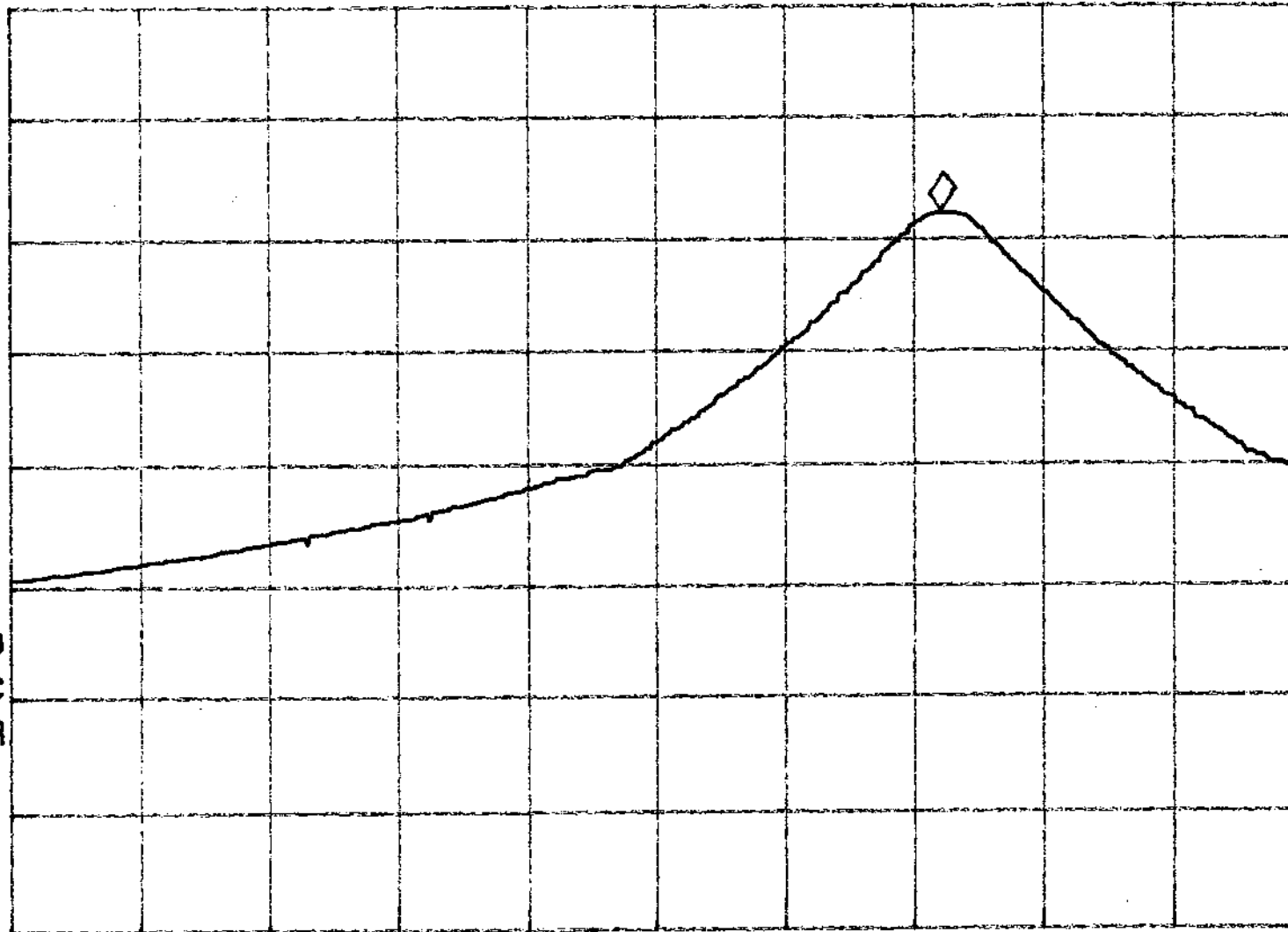
MKR 13.56312 MHz

REF 137.0 dB $\mu$ V AT 40 dB

119.21 dB $\mu$ V

PEAK  
LOG  
10  
dB/

VA SB  
SC FC  
CORR



START 13.55300 MHz

STOP 13.56700 MHz

#RES BW 1.0 KHZ

#VBW 3 KHZ

#SWP 3.00 sec