

Report No.: 0307232
Model No.: 24060

Pursuant to FCC Part 15 Section 15.227 Emissions Requirement

hp

MKA 133.6 kHz

REF 97.0 dB μ V

AT 10 dB

--46.43 dB

PEAK

LOG

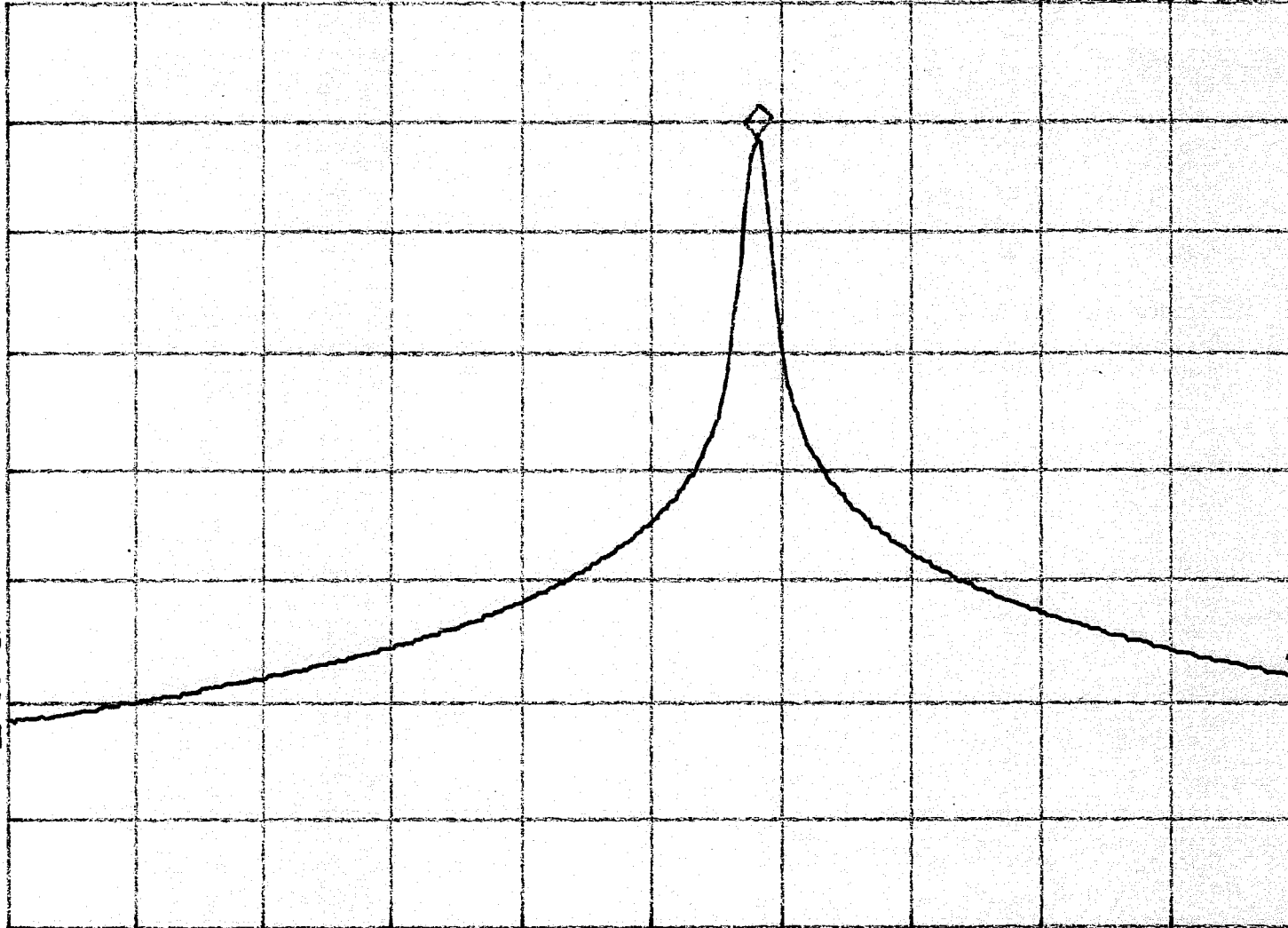
10

dB/

VA SB

SC FC

CORR



Tested By:

[Signature]
(Banyan)

Date: 12-5-03

Checked By:

[Signature]
(Anthony Lee)

Date: 12/5/03

Test Result: Pass / Fail / NA

START 26.9600 MHz

#RES BW 3.0 kHz

VBW 3 kHz

STOP 27.2800 MHz

#SWP 1.00 sec