



**Photographs of ISL39000M Duetto miniPCI WLAN card
assembled in Toshiba Notebook Host
with embedded 2.4GHz and 2.4GHz / 5GHz WLAN antennas for**

**Description: dual band 2.4 GHz / 5 GHz WLAN MiniPCI Card
FCC ID: OSZ39000M1
Brand name: Intersil
Model number: ISL39000M**

Notebook Host: Toshiba Satellite Pro series

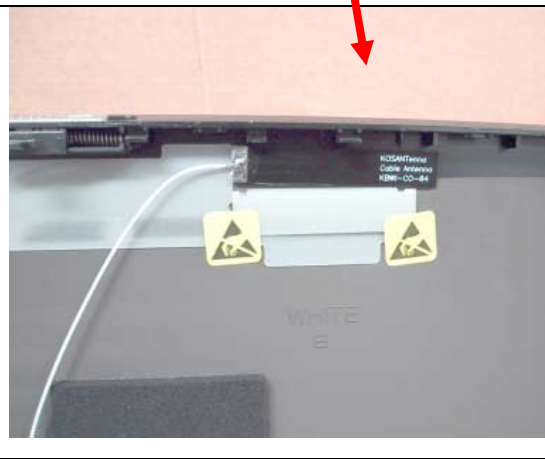
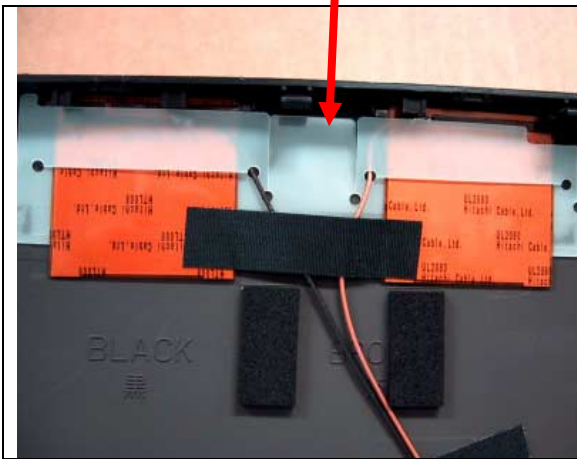
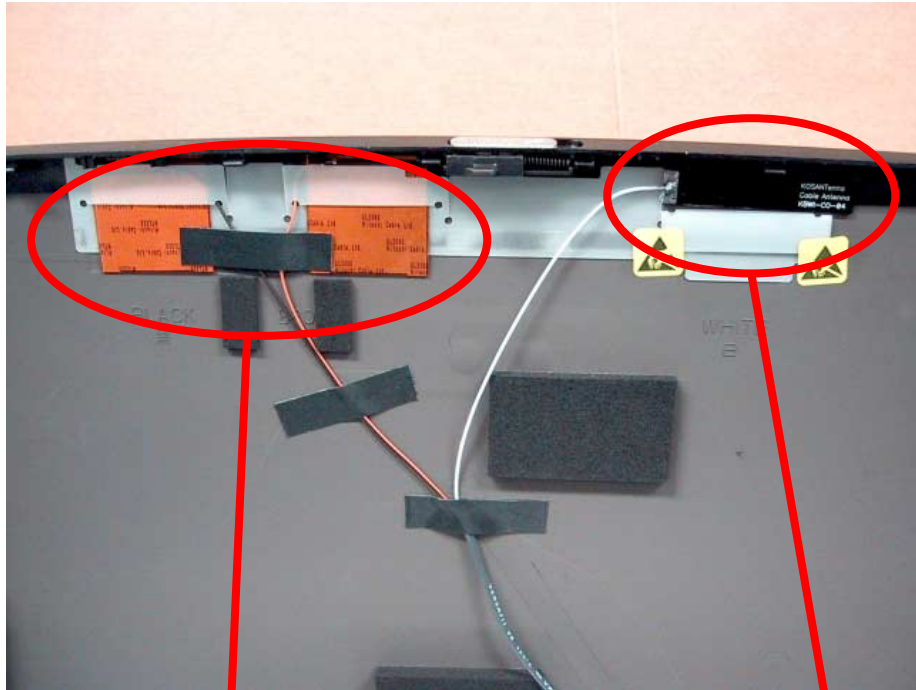
**Overview of Host Notebook PC Toshiba Satellite Pro
with WLAN antenna location**



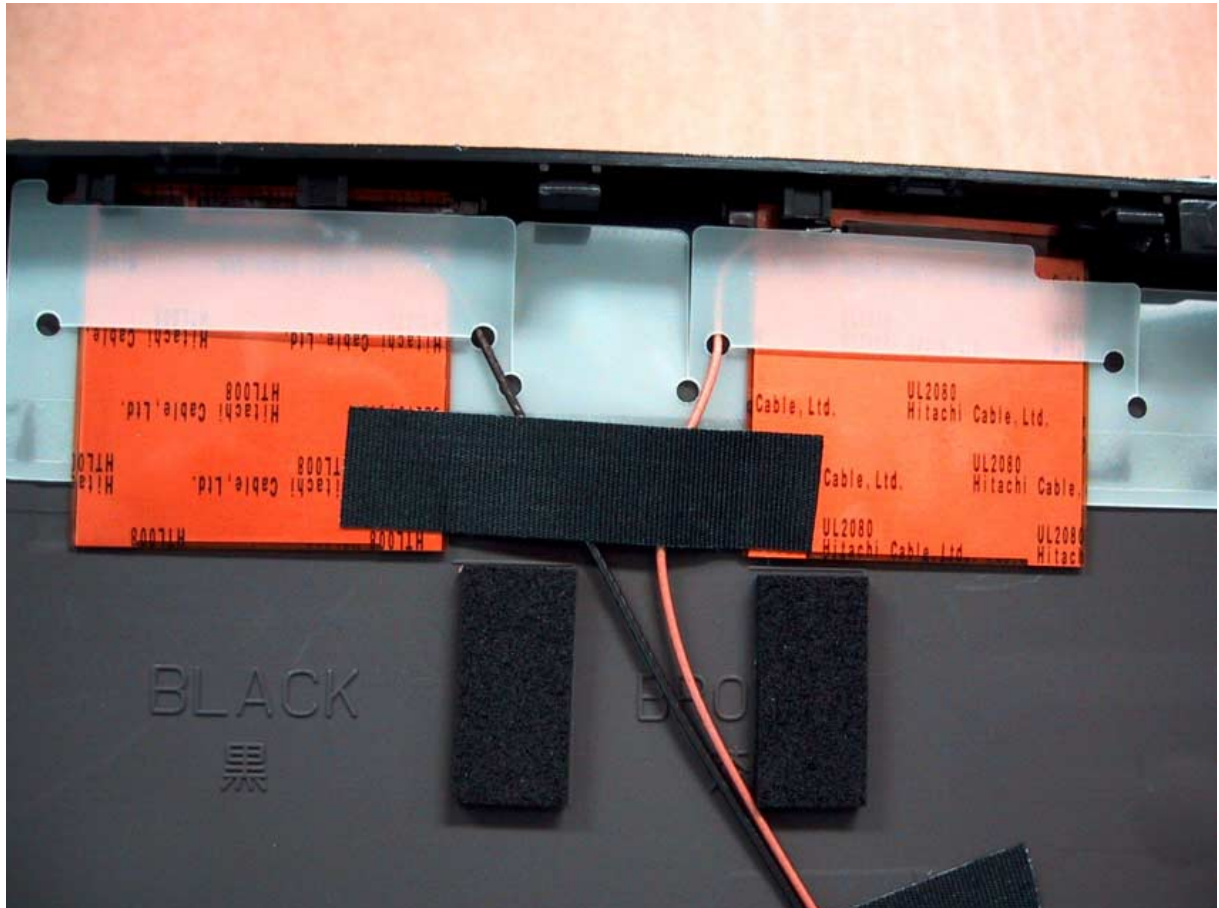
2.4 GHz / 5 GHz WLAN antennas mounted on top center back of LCD display of Toshiba Satellite Pro Notebook Host



2.4 GHz and 5 GHz WLAN antenna assemblies



**2.4 GHz Hitachi antenna
(models HTL008 (WLAN) and model UL2080 (Bluetooth))**



Note: The UL2080 Bluetooth antennas (connected to brown antenna cable) are present, but not connected. No Bluetooth module will be installed when a WLAN miniPCI card is present.

**2.4 GHz / 5 GHz Dual band KOSAN WLAN antenna
(KOSAN model KBWI-CO-04)**



ISL39000M miniPCI card assembly in PC host under keyboard

