



FCC Processing Gain report of:

Description: 2.4 GHz USB WLAN
Brand name: Intersil
Model number: ISL37300XU

FCC ID: OSZ37300XU

for

- channel 1 at 11 Mbps**
- channel 6 at 1, 2, 5.5 and 11 Mbps**
- channel 11 at 11 Mbps**

Processing Gain ISL37300XU USB Card

Data Rate 11Mb/s
 Symbol rate 1.375Ms/s
 Modulation CCK
 Theoretical required Es/No=16.4
 System Loss Lsys=2
 PG=Es/No+Lsys+J/S

Test Conditions:
 Desired Signal Es=-60dBm
 CR9=80;CR10=C9;CR47=9E;CR35=7F;
 Calibration has been performed by using Gigatron Power Meter in the MAP mode
 and the card was running in the Continuous TX Mode in the PTTU.
 Frequency Channel 1

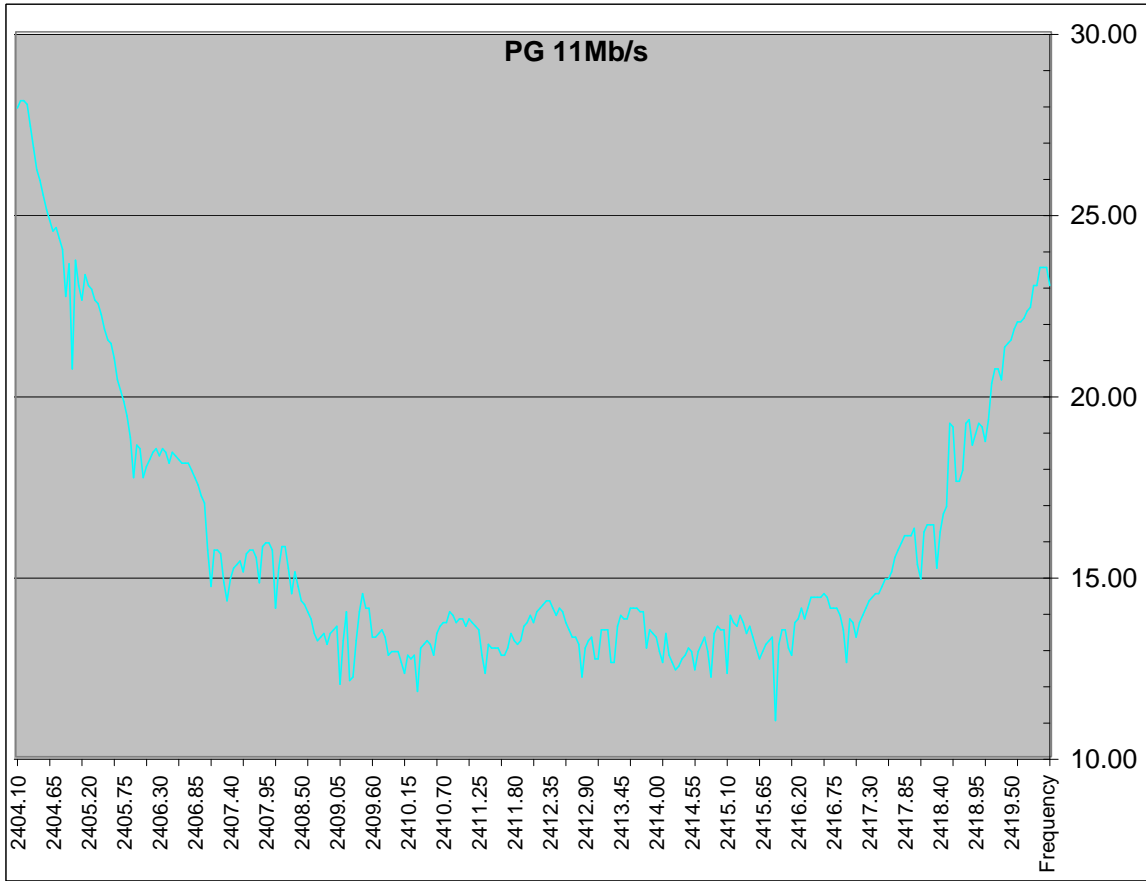
Frequency	Jammer Level	J/S	PG
2420.00	-54.90	4.60	23.00
2419.95	-54.40	5.10	23.50
2419.90	-54.40	5.10	23.50
2419.85	-54.40	5.10	23.50
2419.80	-54.90	4.60	23.00
2419.75	-54.90	4.60	23.00
2419.70	-55.50	4.00	22.40
2419.65	-55.60	3.90	22.30
2419.60	-55.80	3.70	22.10
2419.55	-55.90	3.60	22.00
2419.50	-55.90	3.60	22.00
2419.45	-56.10	3.40	21.80
2419.40	-56.40	3.10	21.50
2419.35	-56.50	3.00	21.40
2419.30	-56.60	2.90	21.30
2419.25	-57.50	2.00	20.40
2419.20	-57.20	2.30	20.70
2419.15	-57.20	2.30	20.70
2419.10	-57.60	1.90	20.30
2419.05	-58.60	0.90	19.30
2419.00	-59.20	0.30	18.70
2418.95	-58.80	0.70	19.10
2418.90	-58.70	0.80	19.20
2418.85	-59.00	0.50	18.90
2418.80	-59.30	0.20	18.60
2418.75	-58.60	0.90	19.30
2418.70	-58.70	0.80	19.20
2418.65	-60.00	-0.50	17.90
2418.60	-60.30	-0.80	17.60
2418.55	-60.30	-0.80	17.60
2418.50	-58.80	0.70	19.10
2418.45	-58.70	0.80	19.20
2418.40	-61.00	-1.50	16.90
2418.35	-61.20	-1.70	16.70
2418.30	-61.70	-2.20	16.20
2418.25	-62.70	-3.20	15.20
2418.20	-61.50	-2.00	16.40
2418.15	-61.50	-2.00	16.40
2418.10	-61.50	-2.00	16.40
2418.05	-61.70	-2.20	16.20
2418.00	-63.00	-3.50	14.90
2417.95	-62.60	-3.10	15.30
2417.90	-61.60	-2.10	16.30
2417.85	-61.80	-2.30	16.10
2417.80	-61.80	-2.30	16.10
2417.75	-61.80	-2.30	16.10
2417.70	-62.00	-2.50	15.90
2417.65	-62.20	-2.70	15.70
2417.60	-62.40	-2.90	15.50
2417.55	-62.80	-3.30	15.10
2417.50	-63.00	-3.50	14.90
2417.45	-63.00	-3.50	14.90
2417.40	-63.20	-3.70	14.70
2417.35	-63.40	-3.90	14.50
2417.30	-63.40	-3.90	14.50
2417.25	-63.50	-4.00	14.40
2417.20	-63.60	-4.10	14.30
2417.15	-63.80	-4.30	14.10
2417.10	-64.00	-4.50	13.90
2417.05	-64.20	-4.70	13.70
2417.00	-64.60	-5.10	13.30
2416.95	-64.20	-4.70	13.70
2416.90	-64.10	-4.60	13.80
2416.85	-65.30	-5.80	12.60
2416.80	-64.40	-4.90	13.50
2416.75	-64.00	-4.50	13.90
2416.70	-63.80	-4.30	14.10
2416.65	-63.80	-4.30	14.10
2416.60	-63.80	-4.30	14.10
2416.55	-63.50	-4.00	14.40
2416.50	-63.40	-3.90	14.50
2416.45	-63.50	-4.00	14.40

Processing Gain = 13.2

2416.40	-63.50	-4.00	14.40
2416.35	-63.50	-4.00	14.40
2416.30	-63.50	-4.00	14.40
2416.25	-63.80	-4.30	14.10
2416.20	-64.10	-4.60	13.80
2416.15	-63.80	-4.30	14.10
2416.10	-64.10	-4.60	13.80
2416.05	-64.20	-4.70	13.70
2416.00	-65.10	-5.60	12.80
2415.95	-64.90	-5.40	13.00
2415.90	-64.40	-4.90	13.50
2415.85	-64.40	-4.90	13.50
2415.80	-64.80	-5.30	13.10
2415.75	-66.90	-7.40	11.00
2415.70	-64.60	-5.10	13.30
2415.65	-64.70	-5.20	13.20
2415.60	-64.80	-5.30	13.10
2415.55	-65.00	-5.50	12.90
2415.50	-65.20	-5.70	12.70
2415.45	-64.90	-5.40	13.00
2415.40	-64.60	-5.10	13.30
2415.35	-64.30	-4.80	13.60
2415.30	-64.50	-5.00	13.40
2415.25	-64.20	-4.70	13.70
2415.20	-64.00	-4.50	13.90
2415.15	-64.30	-4.80	13.60
2415.10	-64.20	-4.70	13.70
2415.05	-64.00	-4.50	13.90
2415.00	-65.60	-6.10	12.30
2414.95	-64.40	-4.90	13.50
2414.90	-64.40	-4.90	13.50
2414.85	-64.30	-4.80	13.60
2414.80	-64.50	-5.00	13.40
2414.75	-65.70	-6.20	12.20
2414.70	-65.00	-5.50	12.90
2414.65	-64.60	-5.10	13.30
2414.60	-64.80	-5.30	13.10
2414.55	-65.00	-5.50	12.90
2414.50	-65.50	-6.00	12.40
2414.45	-65.00	-5.50	12.90
2414.40	-64.90	-5.40	13.00
2414.35	-65.10	-5.60	12.80
2414.30	-65.20	-5.70	12.70
2414.25	-65.40	-5.90	12.50
2414.20	-65.50	-6.00	12.40
2414.15	-65.30	-5.80	12.60
2414.10	-65.10	-5.60	12.80
2414.05	-64.50	-5.00	13.40
2414.00	-65.30	-5.80	12.60
2413.95	-65.00	-5.50	12.90
2413.90	-64.60	-5.10	13.30
2413.85	-64.50	-5.00	13.40
2413.80	-64.40	-4.90	13.50
2413.75	-64.90	-5.40	13.00
2413.70	-63.90	-4.40	14.00
2413.65	-63.90	-4.40	14.00
2413.60	-63.80	-4.30	14.10
2413.55	-63.80	-4.30	14.10
2413.50	-63.80	-4.30	14.10
2413.45	-64.10	-4.60	13.80
2413.40	-64.10	-4.60	13.80
2413.35	-64.00	-4.50	13.90
2413.30	-64.30	-4.80	13.60
2413.25	-65.30	-5.80	12.60
2413.20	-65.30	-5.80	12.60
2413.15	-64.40	-4.90	13.50
2413.10	-64.40	-4.90	13.50
2413.05	-64.40	-4.90	13.50
2413.00	-65.20	-5.70	12.70
2412.95	-65.20	-5.70	12.70
2412.90	-64.60	-5.10	13.30
2412.85	-64.70	-5.20	13.20
2412.80	-64.90	-5.40	13.00
2412.75	-65.70	-6.20	12.20
2412.70	-64.80	-5.30	13.10
2412.65	-64.60	-5.10	13.30
2412.60	-64.60	-5.10	13.30
2412.55	-64.40	-4.90	13.50
2412.50	-64.20	-4.70	13.70
2412.45	-63.90	-4.40	14.00
2412.40	-63.80	-4.30	14.10
2412.35	-64.00	-4.50	13.90
2412.30	-63.80	-4.30	14.10
2412.25	-63.60	-4.10	14.30
2412.20	-63.60	-4.10	14.30
2412.15	-63.70	-4.20	14.20

2412.10	-63.80	-4.30	14.10
2412.05	-63.90	-4.40	14.00
2412.00	-64.20	-4.70	13.70
2411.95	-64.00	-4.50	13.90
2411.90	-64.20	-4.70	13.70
2411.85	-64.30	-4.80	13.60
2411.80	-64.70	-5.20	13.20
2411.75	-64.80	-5.30	13.10
2411.70	-64.70	-5.20	13.20
2411.65	-64.50	-5.00	13.40
2411.60	-64.90	-5.40	13.00
2411.55	-65.10	-5.60	12.80
2411.50	-65.10	-5.60	12.80
2411.45	-64.90	-5.40	13.00
2411.40	-64.90	-5.40	13.00
2411.35	-64.90	-5.40	13.00
2411.30	-64.80	-5.30	13.10
2411.25	-65.60	-6.10	12.30
2411.20	-65.10	-5.60	12.80
2411.15	-64.40	-4.90	13.50
2411.10	-64.30	-4.80	13.60
2411.05	-64.20	-4.70	13.70
2411.00	-64.10	-4.60	13.80
2410.95	-64.30	-4.80	13.60
2410.90	-64.10	-4.60	13.80
2410.85	-64.10	-4.60	13.80
2410.80	-64.20	-4.70	13.70
2410.75	-64.00	-4.50	13.90
2410.70	-63.90	-4.40	14.00
2410.65	-64.20	-4.70	13.70
2410.60	-64.20	-4.70	13.70
2410.55	-64.30	-4.80	13.60
2410.50	-64.50	-5.00	13.40
2410.45	-65.10	-5.60	12.80
2410.40	-64.80	-5.30	13.10
2410.35	-64.70	-5.20	13.20
2410.30	-64.80	-5.30	13.10
2410.25	-64.90	-5.40	13.00
2410.20	-66.10	-6.60	11.80
2410.15	-65.10	-5.60	12.80
2410.10	-65.20	-5.70	12.70
2410.05	-65.10	-5.60	12.80
2410.00	-65.60	-6.10	12.30
2409.95	-65.30	-5.80	12.60
2409.90	-65.00	-5.50	12.90
2409.85	-65.00	-5.50	12.90
2409.80	-65.00	-5.50	12.90
2409.75	-65.10	-5.60	12.80
2409.70	-64.60	-5.10	13.30
2409.65	-64.40	-4.90	13.50
2409.60	-64.50	-5.00	13.40
2409.55	-64.60	-5.10	13.30
2409.50	-64.60	-5.10	13.30
2409.45	-63.80	-4.30	14.10
2409.40	-63.80	-4.30	14.10
2409.35	-63.40	-3.90	14.50
2409.30	-63.90	-4.40	14.00
2409.25	-64.70	-5.20	13.20
2409.20	-65.70	-6.20	12.20
2409.15	-65.80	-6.30	12.10
2409.10	-63.90	-4.40	14.00
2409.05	-64.70	-5.20	13.20
2409.00	-65.90	-6.40	12.00
2408.95	-64.30	-4.80	13.60
2408.90	-64.40	-4.90	13.50
2408.85	-64.50	-5.00	13.40
2408.80	-64.80	-5.30	13.10
2408.75	-64.50	-5.00	13.40
2408.70	-64.60	-5.10	13.30
2408.65	-64.70	-5.20	13.20
2408.60	-64.50	-5.00	13.40
2408.55	-64.10	-4.60	13.80
2408.50	-63.90	-4.40	14.00
2408.45	-63.70	-4.20	14.20
2408.40	-63.60	-4.10	14.30
2408.35	-63.20	-3.70	14.70
2408.30	-62.80	-3.30	15.10
2408.25	-63.40	-3.90	14.50
2408.20	-62.70	-3.20	15.20
2408.15	-62.10	-2.60	15.80
2408.10	-62.10	-2.60	15.80
2408.05	-62.70	-3.20	15.20
2408.00	-63.80	-4.30	14.10
2407.95	-62.20	-2.70	15.70
2407.90	-62.00	-2.50	15.90
2407.85	-62.00	-2.50	15.90

2407.80	-62.10	-2.60	15.80
2407.75	-63.10	-3.60	14.80
2407.70	-62.40	-2.90	15.50
2407.65	-62.20	-2.70	15.70
2407.60	-62.20	-2.70	15.70
2407.55	-62.30	-2.80	15.60
2407.50	-62.80	-3.30	15.10
2407.45	-62.50	-3.00	15.40
2407.40	-62.60	-3.10	15.30
2407.35	-62.70	-3.20	15.20
2407.30	-63.00	-3.50	14.90
2407.25	-63.60	-4.10	14.30
2407.20	-63.09	-3.59	14.81
2407.15	-62.30	-2.80	15.60
2407.10	-62.20	-2.70	15.70
2407.05	-62.20	-2.70	15.70
2407.00	-63.20	-3.70	14.70
2406.95	-62.20	-2.70	15.70
2406.90	-60.90	-1.40	17.00
2406.85	-60.70	-1.20	17.20
2406.80	-60.40	-0.90	17.50
2406.75	-60.20	-0.70	17.70
2406.70	-60.00	-0.50	17.90
2406.65	-59.80	-0.30	18.10
2406.60	-59.80	-0.30	18.10
2406.55	-59.80	-0.30	18.10
2406.50	-59.70	-0.20	18.20
2406.45	-59.60	-0.10	18.30
2406.40	-59.50	0.00	18.40
2406.35	-59.80	-0.30	18.10
2406.30	-59.50	0.00	18.40
2406.25	-59.40	0.10	18.50
2406.20	-59.60	-0.10	18.30
2406.15	-59.40	0.10	18.50
2406.10	-59.50	0.00	18.40
2406.05	-59.70	-0.20	18.20
2406.00	-59.90	-0.40	18.00
2405.95	-60.20	-0.70	17.70
2405.90	-59.40	0.10	18.50
2405.85	-59.30	0.20	18.60
2405.80	-60.20	-0.70	17.70
2405.75	-59.10	0.40	18.80
2405.70	-58.50	1.00	19.40
2405.65	-58.10	1.40	19.80
2405.60	-57.80	1.70	20.10
2405.55	-57.50	2.00	20.40
2405.50	-56.90	2.60	21.00
2405.45	-56.50	3.00	21.40
2405.40	-56.40	3.10	21.50
2405.35	-56.10	3.40	21.80
2405.30	-55.70	3.80	22.20
2405.25	-55.40	4.10	22.50
2405.20	-55.30	4.20	22.60
2405.15	-55.00	4.50	22.90
2405.10	-54.90	4.60	23.00
2405.05	-54.60	4.90	23.30
2405.00	-55.30	4.20	22.60
2404.95	-54.90	4.60	23.00
2404.90	-54.20	5.30	23.70
2404.85	-57.20	2.30	20.70
2404.80	-54.30	5.20	23.60
2404.75	-55.20	4.30	22.70
2404.70	-53.90	5.60	24.00
2404.65	-53.60	5.90	24.30
2404.60	-53.30	6.20	24.60
2404.55	-53.40	6.10	24.50
2404.50	-53.10	6.40	24.80
2404.45	-52.80	6.70	25.10
2404.40	-52.40	7.10	25.50
2404.35	-52.00	7.50	25.90
2404.30	-51.70	7.80	26.20
2404.25	-51.10	8.40	26.80
2404.20	-50.50	9.00	27.40
2404.15	-49.90	9.60	28.00
2404.10	-49.80	9.70	28.10
2404.05	-49.80	9.70	28.10
2404.00	-50.00	9.50	27.90



Processing Gain ISL37300XU USB Card

Data Rate 1Mb/s

Symbol rate 1Ms/s

Modulation DBPSK, spreading 11Mc/s

Theoretical required Es/No=10.3

System Loss Lsys=2

PG=Es/No+Lsys+J/S

Desired Signal Level = -60dBm, during the test

Test Conditions:

Desired Signal Es=-60dBm

CR9=80;CR10=C9;CR47=9E;CR35=7F;

Calibration has been performed by using Gigatron Power Meter in the MAP mode and the card was running in the Continuous TX Mode in the PTTU.

Frequency Channel 6

Frequency	Jammer Level	J/S	PG
2445.00	-54.5	5	17.3
2444.95	-54.6	4.9	17.2
2444.90	-54.5	5	17.3
2444.85	-54.2	5.3	17.6
2444.80	-54	5.5	17.8
2444.75	-54	5.5	17.8
2444.70	-54.2	5.3	17.6
2444.65	-54.5	5	17.3
2444.60	-55.2	4.3	16.6
2444.55	-55.7	3.8	16.1
2444.50	-56.1	3.4	15.7
2444.45	-56.3	3.2	15.5
2444.40	-55.9	3.6	15.9
2444.35	-55.5	4	16.3
2444.30	-55	4.5	16.8
2444.25	-54.9	4.6	16.9
2444.20	-54.9	4.6	16.9
2444.15	-54.9	4.6	16.9
2444.10	-55.1	4.4	16.7
2444.05	-55.4	4.1	16.4
2444.00	-55.4	4.1	16.4
2443.95	-55.4	4.1	16.4
2443.90	-55.2	4.3	16.6
2443.85	-54.8	4.7	17
2443.80	-54.4	5.1	17.4
2443.75	-54.7	4.8	17.1
2443.70	-54.9	4.6	16.9
2443.65	-55.1	4.4	16.7
2443.60	-55.9	3.6	15.9
2443.55	-56.7	2.8	15.1
2443.50	-57.2	2.3	14.6
2443.45	-57.5	2	14.3
2443.40	-57.4	2.1	14.4
2443.35	-57.4	2.1	14.4
2443.30	-57.1	2.4	14.7
2443.25	-57	2.5	14.8
2443.20	-57	2.5	14.8
2443.15	-56.8	2.7	15
2443.10	-56.8	2.7	15
2443.05	-56.8	2.7	15
2443.00	-56.7	2.8	15.1
2442.95	-56.1	3.4	15.7
2442.90	-55.4	4.1	16.4
2442.85	-54.6	4.9	17.2
2442.80	-54.6	4.9	17.2
2442.75	-52.7	6.8	19.1
2442.70	-52.2	7.3	19.6
2442.65	-50	9.5	21.8
2442.60	-48.6	10.9	23.2
2442.55	-47.3	12.2	24.5
2442.50	-46.6	12.9	25.2
2442.45	-47.1	12.4	24.7
2442.40	-48.6	10.9	23.2
2442.35	-50	9.5	21.8
2442.30	-51.3	8.2	20.5
2442.25	-53.2	6.3	18.6
2442.20	-54.1	5.4	17.7
2442.15	-55.1	4.4	16.7
2442.10	-56	3.5	15.8
2442.05	-56.8	2.7	15
2442.00	-57.7	1.8	14.1
2441.95	-58	1.5	13.8
2441.90	-57.9	1.6	13.9
2441.85	-57.9	1.6	13.9
2441.80	-57.9	1.6	13.9
2441.75	-58.2	1.3	13.6
2441.70	-58.2	1.3	13.6
2441.65	-57.6	1.9	14.2
2441.60	-57.4	2.1	14.4
2441.55	-57.7	1.8	14.1
2441.50	-57.6	1.9	14.2
2441.45	-57.3	2.2	14.5

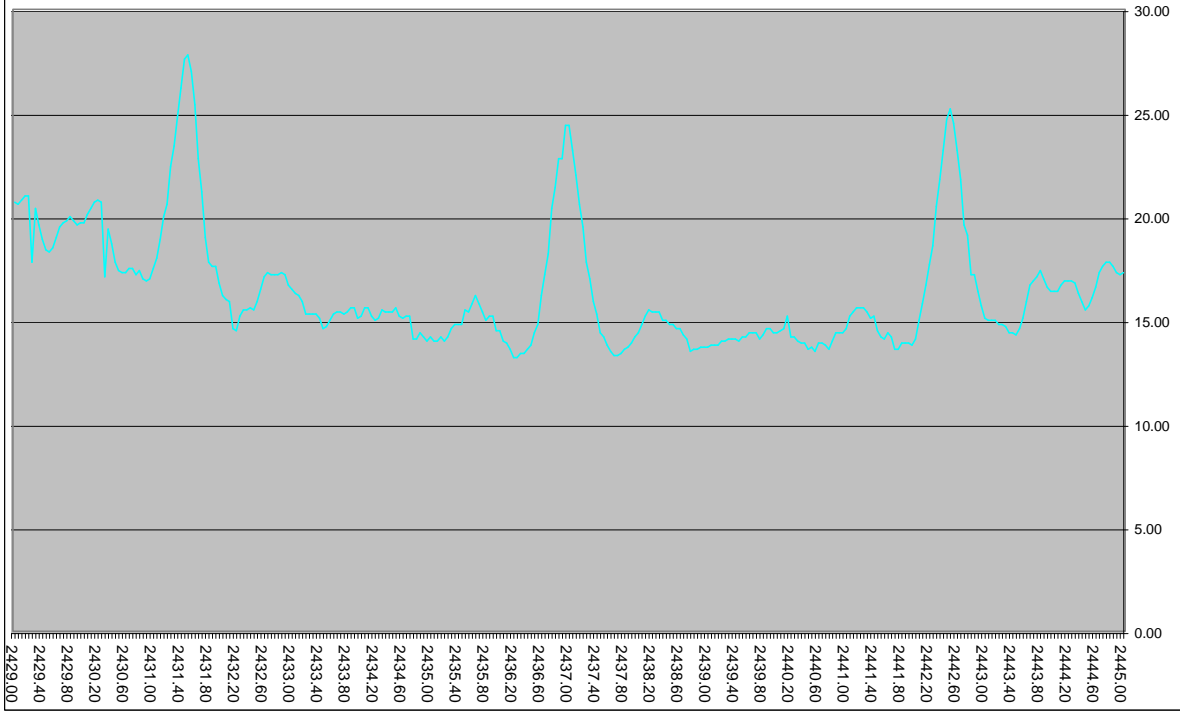
Processing Gain = 14.2

2441.40	-56.6	2.9	15.2
2441.35	-56.7	2.8	15.1
2441.30	-56.4	3.1	15.4
2441.25	-56.2	3.3	15.6
2441.20	-56.2	3.3	15.6
2441.15	-56.2	3.3	15.6
2441.10	-56.4	3.1	15.4
2441.05	-56.6	2.9	15.2
2441.00	-57.2	2.3	14.6
2440.95	-57.4	2.1	14.4
2440.90	-57.4	2.1	14.4
2440.85	-57.4	2.1	14.4
2440.80	-57.8	1.7	14
2440.75	-58.2	1.3	13.6
2440.70	-58	1.5	13.8
2440.65	-57.9	1.6	13.9
2440.60	-57.9	1.6	13.9
2440.55	-58.3	1.2	13.5
2440.50	-58.1	1.4	13.7
2440.45	-58.2	1.3	13.6
2440.40	-57.9	1.6	13.9
2440.35	-57.9	1.6	13.9
2440.30	-57.8	1.7	14
2440.25	-57.6	1.9	14.2
2440.20	-57.6	1.9	14.2
2440.15	-56.6	2.9	15.2
2440.10	-57.2	2.3	14.6
2440.05	-57.3	2.2	14.5
2440.00	-57.4	2.1	14.4
2439.95	-57.4	2.1	14.4
2439.90	-57.2	2.3	14.6
2439.85	-57.2	2.3	14.6
2439.80	-57.5	2	14.3
2439.75	-57.7	1.8	14.1
2439.70	-57.4	2.1	14.4
2439.65	-57.4	2.1	14.4
2439.60	-57.4	2.1	14.4
2439.55	-57.6	1.9	14.2
2439.50	-57.6	1.9	14.2
2439.45	-57.8	1.7	14
2439.40	-57.7	1.8	14.1
2439.35	-57.7	1.8	14.1
2439.30	-57.7	1.8	14.1
2439.25	-57.8	1.7	14
2439.20	-57.8	1.7	14
2439.15	-58	1.5	13.8
2439.10	-58	1.5	13.8
2439.05	-58	1.5	13.8
2439.00	-58.1	1.4	13.7
2438.95	-58.1	1.4	13.7
2438.90	-58.1	1.4	13.7
2438.85	-58.2	1.3	13.6
2438.80	-58.2	1.3	13.6
2438.75	-58.3	1.2	13.5
2438.70	-57.7	1.8	14.1
2438.65	-57.5	2	14.3
2438.60	-57.2	2.3	14.6
2438.55	-57.2	2.3	14.6
2438.50	-57	2.5	14.8
2438.45	-57	2.5	14.8
2438.40	-56.8	2.7	15
2438.35	-56.8	2.7	15
2438.30	-56.4	3.1	15.4
2438.25	-56.4	3.1	15.4
2438.20	-56.4	3.1	15.4
2438.15	-56.3	3.2	15.5
2438.10	-56.6	2.9	15.2
2438.05	-57	2.5	14.8
2438.00	-57.4	2.1	14.4
2437.95	-57.6	1.9	14.2
2437.90	-57.9	1.6	13.9
2437.85	-58.1	1.4	13.7
2437.80	-58.2	1.3	13.6
2437.75	-58.4	1.1	13.4
2437.70	-58.5	1	13.3
2437.65	-58.5	1	13.3
2437.60	-58.3	1.2	13.5
2437.55	-58	1.5	13.8
2437.50	-57.6	1.9	14.2
2437.45	-57.4	2.1	14.4
2437.40	-56.5	3	15.3
2437.35	-55.9	3.6	15.9
2437.30	-54.8	4.7	17
2437.25	-54	5.5	17.8
2437.20	-52.3	7.2	19.5
2437.15	-51.2	8.3	20.6

2437.10	-49.8	9.7	22
2437.05	-48.6	10.9	23.2
2437.00	-47.4	12.1	24.4
2436.95	-47.4	12.1	24.4
2436.90	-49	10.5	22.8
2436.85	-49	10.5	22.8
2436.80	-50.4	9.1	21.4
2436.75	-51.4	8.1	20.4
2436.70	-53.6	5.9	18.2
2436.65	-54.6	4.9	17.2
2436.60	-55.6	3.9	16.2
2436.55	-57	2.5	14.8
2436.50	-57.4	2.1	14.4
2436.45	-58	1.5	13.8
2436.40	-58.2	1.3	13.6
2436.35	-58.4	1.1	13.4
2436.30	-58.4	1.1	13.4
2436.25	-58.6	0.9	13.2
2436.20	-58.6	0.9	13.2
2436.15	-58.2	1.3	13.6
2436.10	-57.9	1.6	13.9
2436.05	-57.8	1.7	14
2436.00	-57.3	2.2	14.5
2435.95	-57.3	2.2	14.5
2435.90	-56.6	2.9	15.2
2435.85	-56.6	2.9	15.2
2435.80	-56.8	2.7	15
2435.75	-56.4	3.1	15.4
2435.70	-56	3.5	15.8
2435.65	-55.6	3.9	16.2
2435.60	-56	3.5	15.8
2435.55	-56.4	3.1	15.4
2435.50	-56.3	3.2	15.5
2435.45	-57	2.5	14.8
2435.40	-57	2.5	14.8
2435.35	-57	2.5	14.8
2435.30	-57.2	2.3	14.6
2435.25	-57.6	1.9	14.2
2435.20	-57.8	1.7	14
2435.15	-57.6	1.9	14.2
2435.10	-57.8	1.7	14
2435.05	-57.8	1.7	14
2435.00	-57.6	1.9	14.2
2434.95	-57.8	1.7	14
2434.90	-57.6	1.9	14.2
2434.85	-57.4	2.1	14.4
2434.80	-57.7	1.8	14.1
2434.75	-57.7	1.8	14.1
2434.70	-56.6	2.9	15.2
2434.65	-56.6	2.9	15.2
2434.60	-56.7	2.8	15.1
2434.55	-56.6	2.9	15.2
2434.50	-56.2	3.3	15.6
2434.45	-56.4	3.1	15.4
2434.40	-56.4	3.1	15.4
2434.35	-56.4	3.1	15.4
2434.30	-56.3	3.2	15.5
2434.25	-56.7	2.8	15.1
2434.20	-56.8	2.7	15
2434.15	-56.6	2.9	15.2
2434.10	-56.2	3.3	15.6
2434.05	-56.2	3.3	15.6
2434.00	-56.6	2.9	15.2
2433.95	-56.7	2.8	15.1
2433.90	-56.2	3.3	15.6
2433.85	-56.2	3.3	15.6
2433.80	-56.4	3.1	15.4
2433.75	-56.5	3	15.3
2433.70	-56.4	3.1	15.4
2433.65	-56.4	3.1	15.4
2433.60	-56.5	3	15.3
2433.55	-56.8	2.7	15
2433.50	-57.1	2.4	14.7
2433.45	-57.2	2.3	14.6
2433.40	-56.7	2.8	15.1
2433.35	-56.5	3	15.3
2433.30	-56.5	3	15.3
2433.25	-56.5	3	15.3
2433.20	-56.5	3	15.3
2433.15	-55.9	3.6	15.9
2433.10	-55.6	3.9	16.2
2433.05	-55.5	4	16.3
2433.00	-55.3	4.2	16.5
2432.95	-55.1	4.4	16.7
2432.90	-54.6	4.9	17.2
2432.85	-54.5	5	17.3

2432.80	-54.6	4.9	17.2
2432.75	-54.6	4.9	17.2
2432.70	-54.6	4.9	17.2
2432.65	-54.5	5	17.3
2432.60	-54.7	4.8	17.1
2432.55	-55.3	4.2	16.5
2432.50	-55.9	3.6	15.9
2432.45	-56.3	3.2	15.5
2432.40	-56.2	3.3	15.6
2432.35	-56.3	3.2	15.5
2432.30	-56.3	3.2	15.5
2432.25	-56.6	2.9	15.2
2432.20	-57.3	2.2	14.5
2432.15	-57.2	2.3	14.6
2432.10	-55.9	3.6	15.9
2432.05	-55.8	3.7	16
2432.00	-55.6	3.9	16.2
2431.95	-55	4.5	16.8
2431.90	-54.2	5.3	17.6
2431.85	-54.2	5.3	17.6
2431.80	-54	5.5	17.8
2431.75	-52.8	6.7	19
2431.70	-50.6	8.9	21.2
2431.65	-49	10.5	22.8
2431.60	-46.4	13.1	25.4
2431.55	-44.8	14.7	27
2431.50	-44	15.5	27.8
2431.45	-44.2	15.3	27.6
2431.40	-45.6	13.9	26.2
2431.35	-47	12.5	24.8
2431.30	-48.4	11.1	23.4
2431.25	-49.4	10.1	22.4
2431.20	-51.2	8.3	20.6
2431.15	-51.8	7.7	20
2431.10	-52.9	6.6	18.9
2431.05	-53.8	5.7	18
2431.00	-54.3	5.2	17.5
2430.95	-54.8	4.7	17
2430.90	-54.9	4.6	16.9
2430.85	-54.8	4.7	17
2430.80	-54.4	5.1	17.4
2430.75	-54.6	4.9	17.2
2430.70	-54.3	5.2	17.5
2430.65	-54.3	5.2	17.5
2430.60	-54.5	5	17.3
2430.55	-54.5	5	17.3
2430.50	-54.4	5.1	17.4
2430.45	-54	5.5	17.8
2430.40	-53.1	6.4	18.7
2430.35	-52.4	7.1	19.4
2430.30	-54.7	4.8	17.1
2430.25	-51.1	8.4	20.7
2430.20	-51	8.5	20.8
2430.15	-51.1	8.4	20.7
2430.10	-51.4	8.1	20.4
2430.05	-51.7	7.8	20.1
2430.00	-52.1	7.4	19.7
2429.95	-52.1	7.4	19.7
2429.90	-52.2	7.3	19.6
2429.85	-52	7.5	19.8
2429.80	-51.8	7.7	20
2429.75	-52	7.5	19.8
2429.70	-52.1	7.4	19.7
2429.65	-52.3	7.2	19.5
2429.60	-52.8	6.7	19
2429.55	-53.3	6.2	18.5
2429.50	-53.5	6	18.3
2429.45	-53.4	6.1	18.4
2429.40	-52.9	6.6	18.9
2429.35	-52.2	7.3	19.6
2429.30	-51.4	8.1	20.4
2429.25	-54	5.5	17.8
2429.20	-50.8	8.7	21
2429.15	-50.8	8.7	21
2429.10	-51	8.5	20.8
2429.05	-51.2	8.3	20.6
2429.00	-51.1	8.4	20.7

PG 1Mb/s



Processing Gain ISL37300XU USB Card

Data Rate 2Mb/s

Modulation QPSK

Theoretical required Es/No=13.3

System Loss Lsys=2

PG=Es/No+Lsys+J/S

Test Conditions:

Desired Signal Es=-60dBm

CR9=80;CR10=C9;CR47=9E;CR35=7F;

Calibration has been performed by using Gigatronic Power Meter in the MAP mode and the card was running in the Continuous TX Mode in the PTTU.

Frequency Channel 6

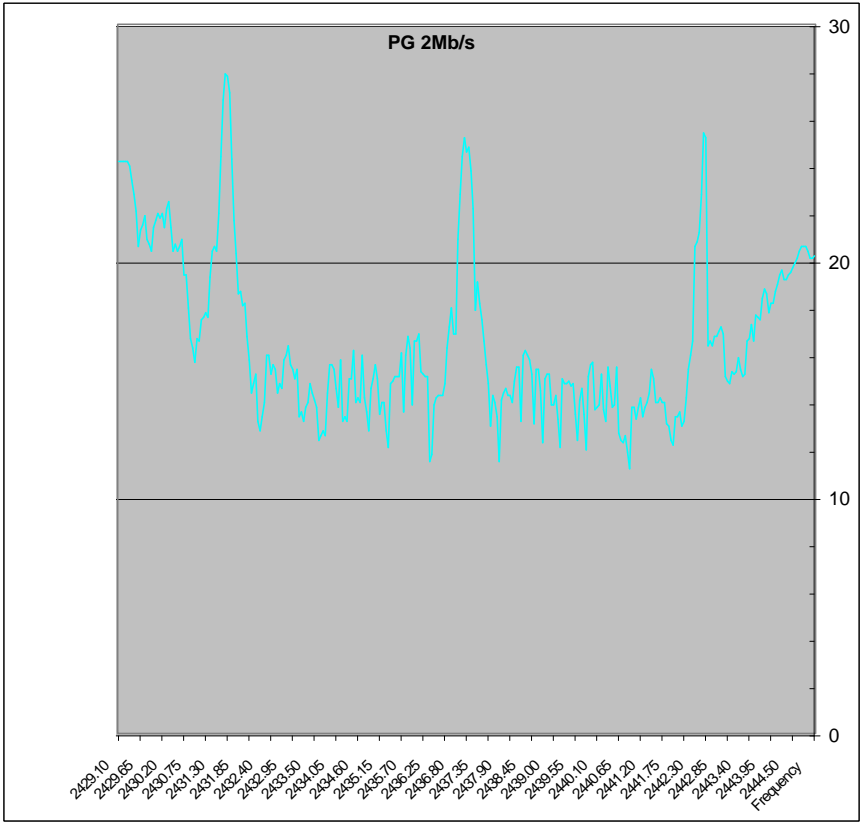
Frequency	Jammer Level	J/S	PG
2445.00	-54.6	4.9	20.2
2444.95	-54.7	4.8	20.1
2444.90	-54.7	4.8	20.1
2444.85	-54.4	5.1	20.4
2444.80	-54.2	5.3	20.6
2444.75	-54.2	5.3	20.6
2444.70	-54.2	5.3	20.6
2444.65	-54.4	5.1	20.4
2444.60	-54.7	4.8	20.1
2444.55	-54.9	4.6	19.9
2444.50	-55.1	4.4	19.7
2444.45	-55.3	4.2	19.5
2444.40	-55.4	4.1	19.4
2444.35	-55.6	3.9	19.2
2444.30	-55.6	3.9	19.2
2444.25	-55.2	4.3	19.6
2444.20	-55.4	4.1	19.4
2444.15	-55.8	3.7	19
2444.10	-56.1	3.4	18.7
2444.05	-56.6	2.9	18.2
2444.00	-56.6	2.9	18.2
2443.95	-57	2.5	17.8
2443.90	-56.2	3.3	18.6
2443.85	-56	3.5	18.8
2443.80	-56.4	3.1	18.4
2443.75	-57.3	2.2	17.5
2443.70	-57.2	2.3	17.6
2443.65	-57.1	2.4	17.7
2443.60	-58.2	1.3	16.6
2443.55	-57.5	2	17.3
2443.50	-58.1	1.4	16.7
2443.45	-58.2	1.3	16.6
2443.40	-59.6	-0.1	15.2
2443.35	-59.7	-0.2	15.1
2443.30	-59.4	0.1	15.4
2443.25	-58.9	0.6	15.9
2443.20	-59.5	0	15.3
2443.15	-59.6	-0.1	15.2
2443.10	-59.5	0	15.3
2443.05	-60	-0.5	14.8
2443.00	-59.9	-0.4	14.9
2442.95	-59.7	-0.2	15.1
2442.90	-57.9	1.6	16.9
2442.85	-57.6	1.9	17.2
2442.80	-57.8	1.7	17
2442.75	-58	1.5	16.8
2442.70	-58	1.5	16.8
2442.65	-58.4	1.1	16.4
2442.60	-58.2	1.3	16.6
2442.55	-58.4	1.1	16.4
2442.50	-49.6	9.9	25.2
2442.45	-49.4	10.1	25.4
2442.40	-52	7.5	22.8
2442.35	-53.6	5.9	21.2
2442.30	-54	5.5	20.8
2442.25	-54.2	5.3	20.6
2442.20	-58.2	1.3	16.6
2442.15	-58.8	0.7	16
2442.10	-59.4	0.1	15.4
2442.05	-60.6	-1.1	14.2
2442.00	-61.6	-2.1	13.2
2441.95	-61.8	-2.3	13
2441.90	-61.2	-1.7	13.6
2441.85	-61.4	-1.9	13.4
2441.80	-61.4	-1.9	13.4
2441.75	-62.6	-3.1	12.2
2441.70	-62.4	-2.9	12.4
2441.65	-61.8	-2.3	13
2441.60	-61.7	-2.2	13.1
2441.55	-60.8	-1.3	14
2441.50	-60.8	-1.3	14
2441.45	-60.6	-1.1	14.2
2441.40	-60.8	-1.3	14
2441.35	-60.8	-1.3	14
2441.30	-59.8	-0.3	15
2441.25	-59.4	0.1	15.4
2441.20	-60.4	-0.9	14.4
2441.15	-60.8	-1.3	14
2441.10	-61	-1.5	13.8

Processing Gain = 13.9

2441.05	-61.4	-1.9	13.4
2441.00	-60.6	-1.1	14.2
2440.95	-61	-1.5	13.8
2440.90	-61.5	-2	13.3
2440.85	-61	-1.5	13.8
2440.80	-61	-1.5	13.8
2440.75	-63.6	-4.1	11.2
2440.70	-62.9	-3.4	11.9
2440.65	-62.2	-2.7	12.6
2440.60	-62.5	-3	12.3
2440.55	-62.4	-2.9	12.4
2440.50	-62.1	-2.6	12.7
2440.45	-59.3	0.2	15.5
2440.40	-60.9	-1.4	13.9
2440.35	-61	-1.5	13.8
2440.30	-60.1	-0.6	14.7
2440.25	-59.3	0.2	15.5
2440.20	-61.6	-2.1	13.2
2440.15	-61.1	-1.6	13.7
2440.10	-59.6	-0.1	15.2
2440.05	-60.9	-1.4	13.9
2440.00	-61	-1.5	13.8
2439.95	-61.1	-1.6	13.7
2439.90	-59.1	0.4	15.7
2439.85	-59.2	0.3	15.6
2439.80	-59.7	-0.2	15.1
2439.75	-62.8	-3.3	12
2439.70	-61.3	-1.8	13.5
2439.65	-60.2	-0.7	14.6
2439.60	-60.7	-1.2	14.1
2439.55	-62.4	-2.9	12.4
2439.50	-61.3	-1.8	13.5
2439.45	-60	-0.5	14.8
2439.40	-60.1	-0.6	14.7
2439.35	-59.9	-0.4	14.9
2439.30	-60	-0.5	14.8
2439.25	-60	-0.5	14.8
2439.20	-59.8	-0.3	15
2439.15	-62.7	-3.2	12.1
2439.10	-61.5	-2	13.3
2439.05	-60.5	-1	14.3
2439.00	-60.9	-1.4	13.9
2438.95	-60.9	-1.4	13.9
2438.90	-59.6	-0.1	15.2
2438.85	-59.6	-0.1	15.2
2438.80	-59.8	-0.3	15
2438.75	-62.5	-3	12.3
2438.70	-60.3	-0.8	14.5
2438.65	-59.4	0.1	15.4
2438.60	-59.4	0.1	15.4
2438.55	-61.7	-2.2	13.1
2438.50	-59.6	-0.1	15.2
2438.45	-59	0.5	15.8
2438.40	-58.8	0.7	16
2438.35	-58.6	0.9	16.2
2438.30	-58.8	0.7	16
2438.25	-61.6	-2.1	13.2
2438.20	-59.3	0.2	15.5
2438.15	-59.3	0.2	15.5
2438.10	-59.9	-0.4	14.9
2438.05	-60.8	-1.3	14
2438.00	-60.5	-1	14.3
2437.95	-60.5	-1	14.3
2437.90	-60.2	-0.7	14.6
2437.85	-60.4	-0.9	14.4
2437.80	-60.7	-1.2	14.1
2437.75	-63.3	-3.8	11.5
2437.70	-61.4	-1.9	13.4
2437.65	-60.8	-1.3	14
2437.60	-60.5	-1	14.3
2437.55	-61.8	-2.3	13
2437.50	-60	-0.5	14.8
2437.45	-59.2	0.3	15.6
2437.40	-58.2	1.3	16.6
2437.35	-57.3	2.2	17.5
2437.30	-56.6	2.9	18.2
2437.25	-55.7	3.8	19.1
2437.20	-56.9	2.6	17.9
2437.15	-52.6	6.9	22.2
2437.10	-51	8.5	23.8
2437.05	-50	9.5	24.8
2437.00	-50.2	9.3	24.6
2436.95	-49.6	9.9	25.2
2436.90	-50.4	9.1	24.4
2436.85	-52	7.5	22.8
2436.80	-53.9	5.6	20.9
2436.75	-57.9	1.6	16.9
2436.70	-57.9	1.6	16.9
2436.65	-56.8	2.7	18
2436.60	-57.6	1.9	17.2
2436.55	-58.5	1	16.3
2436.50	-60	-0.5	14.8

2436.45	-60.5	-1	14.3
2436.40	-60.5	-1	14.3
2436.35	-60.5	-1	14.3
2436.30	-60.6	-1.1	14.2
2436.25	-60.9	-1.4	13.9
2436.20	-63	-3.5	11.8
2436.15	-63.3	-3.8	11.5
2436.10	-59.7	-0.2	15.1
2436.05	-59.7	-0.2	15.1
2436.00	-59.6	-0.1	15.2
2435.95	-59.5	0	15.3
2435.90	-57.9	1.6	16.9
2435.85	-58.2	1.3	16.6
2435.80	-58.2	1.3	16.6
2435.75	-60.9	-1.4	13.9
2435.70	-58.5	1	16.3
2435.65	-58	1.5	16.8
2435.60	-58.8	0.7	16
2435.55	-61.2	-1.7	13.6
2435.50	-58.7	0.8	16.1
2435.45	-59.7	-0.2	15.1
2435.40	-59.7	-0.2	15.1
2435.35	-59.7	-0.2	15.1
2435.30	-59.9	-0.4	14.9
2435.25	-60	-0.5	14.8
2435.20	-62.7	-3.2	12.1
2435.15	-62	-2.5	12.8
2435.10	-60.8	-1.3	14
2435.05	-60.8	-1.3	14
2435.00	-61.3	-1.8	13.5
2434.95	-59.8	-0.3	15
2434.90	-59.2	0.3	15.6
2434.85	-59.8	-0.3	15
2434.80	-60.2	-0.7	14.6
2434.75	-62	-2.5	12.8
2434.70	-61.2	-1.7	13.6
2434.65	-60.6	-1.1	14.2
2434.60	-58.8	0.7	16
2434.55	-60.8	-1.3	14
2434.50	-60.6	-1.1	14.2
2434.45	-60.8	-1.3	14
2434.40	-58.6	0.9	16.2
2434.35	-59.8	-0.3	15
2434.30	-59.8	-0.3	15
2434.25	-61.6	-2.1	13.2
2434.20	-61.4	-1.9	13.4
2434.15	-61.6	-2.1	13.2
2434.10	-59	0.5	15.8
2434.05	-61	-1.5	13.8
2434.00	-60.2	-0.7	14.6
2433.95	-59.4	0.1	15.4
2433.90	-59.2	0.3	15.6
2433.85	-59.2	0.3	15.6
2433.80	-60.4	-0.9	14.4
2433.75	-62.2	-2.7	12.6
2433.70	-62	-2.5	12.8
2433.65	-62.2	-2.7	12.6
2433.60	-62.4	-2.9	12.4
2433.55	-61	-1.5	13.8
2433.50	-60.7	-1.2	14.1
2433.45	-60.4	-0.9	14.4
2433.40	-60	-0.5	14.8
2433.35	-60.8	-1.3	14
2433.30	-61	-1.5	13.8
2433.25	-61.6	-2.1	13.2
2433.20	-61.2	-1.7	13.6
2433.15	-61.4	-1.9	13.4
2433.10	-59.4	0.1	15.4
2433.05	-59.8	-0.3	15
2433.00	-59.4	0.1	15.4
2432.95	-59.2	0.3	15.6
2432.90	-58.4	1.1	16.4
2432.85	-58.8	0.7	16
2432.80	-59	0.5	15.8
2432.75	-60.2	-0.7	14.6
2432.70	-60	-0.5	14.8
2432.65	-60.4	-0.9	14.4
2432.60	-59.4	0.1	15.4
2432.55	-59.2	0.3	15.6
2432.50	-59.6	-0.1	15.2
2432.45	-58.8	0.7	16
2432.40	-58.8	0.7	16
2432.35	-60.8	-1.3	14
2432.30	-61.4	-1.9	13.4
2432.25	-62	-2.5	12.8
2432.20	-61.6	-2.1	13.2
2432.15	-59.6	-0.1	15.2
2432.10	-60	-0.5	14.8
2432.05	-60.4	-0.9	14.4
2432.00	-59	0.5	15.8
2431.95	-58	1.5	16.8
2431.90	-56.6	2.9	18.2

2431.85	-56.7	2.8	18.1
2431.80	-56.1	3.4	18.7
2431.75	-56.2	3.3	18.6
2431.70	-54.5	5	20.3
2431.65	-53.1	6.4	21.7
2431.60	-50.5	9	24.3
2431.55	-47.7	11.8	27.1
2431.50	-47	12.5	27.8
2431.45	-46.9	12.6	27.9
2431.40	-48	11.5	26.8
2431.35	-50.4	9.1	24.4
2431.30	-52.8	6.7	22
2431.25	-54.4	5.1	20.4
2431.20	-54.2	5.3	20.6
2431.15	-54.4	5.1	20.4
2431.10	-55.5	4	19.3
2431.05	-57.2	2.3	17.6
2431.00	-57	2.5	17.8
2430.95	-57.2	2.3	17.6
2430.90	-57.3	2.2	17.5
2430.85	-58.2	1.3	16.6
2430.80	-58.1	1.4	16.7
2430.75	-59.1	0.4	15.7
2430.70	-58.5	1	16.3
2430.65	-58.1	1.4	16.7
2430.60	-56.8	2.7	18
2430.55	-55.4	4.1	19.4
2430.50	-55.4	4.1	19.4
2430.45	-53.9	5.6	20.9
2430.40	-54.2	5.3	20.6
2430.35	-54.4	5.1	20.4
2430.30	-54.1	5.4	20.7
2430.25	-54.4	5.1	20.4
2430.20	-53.4	6.1	21.4
2430.15	-52.3	7.2	22.5
2430.10	-52.6	6.9	22.2
2430.05	-53.4	6.1	21.4
2430.00	-52.8	6.7	22
2429.95	-53	6.5	21.8
2429.90	-52.8	6.7	22
2429.85	-53.1	6.4	21.7
2429.80	-53.4	6.1	21.4
2429.75	-54.4	5.1	20.4
2429.70	-54.1	5.4	20.7
2429.65	-53.9	5.6	20.9
2429.60	-52.9	6.6	21.9
2429.55	-53.3	6.2	21.5
2429.50	-53.5	6	21.3
2429.45	-54.2	5.3	20.6
2429.40	-52.7	6.8	22.1
2429.35	-52	7.5	22.8
2429.30	-51.4	8.1	23.4
2429.25	-50.8	8.7	24
2429.20	-50.6	8.9	24.2
2429.15	-50.6	8.9	24.2
2429.10	-50.6	8.9	24.2
2429.05	-50.6	8.9	24.2
2429.00	-50.6	8.9	24.2



Processing Gain ISL37300XU USB Card

Data Rate 5.5Mb/s

Modulation CCK
 Theoretical required Es/No=13.4
 System Loss Lsys=2
 PG=Es/No+Lsys+J/S

Test Conditions:
 Desired Signal Es=-60dBm
 CR9=80;CR10=C9;CR47=9E;CR35=7F;
 Calibration has been performed by using Gigatronic Power Meter in the MAP mode
 and the card was running in the Continuous TX Mode in the PTTU.
 Frequency Channel 6

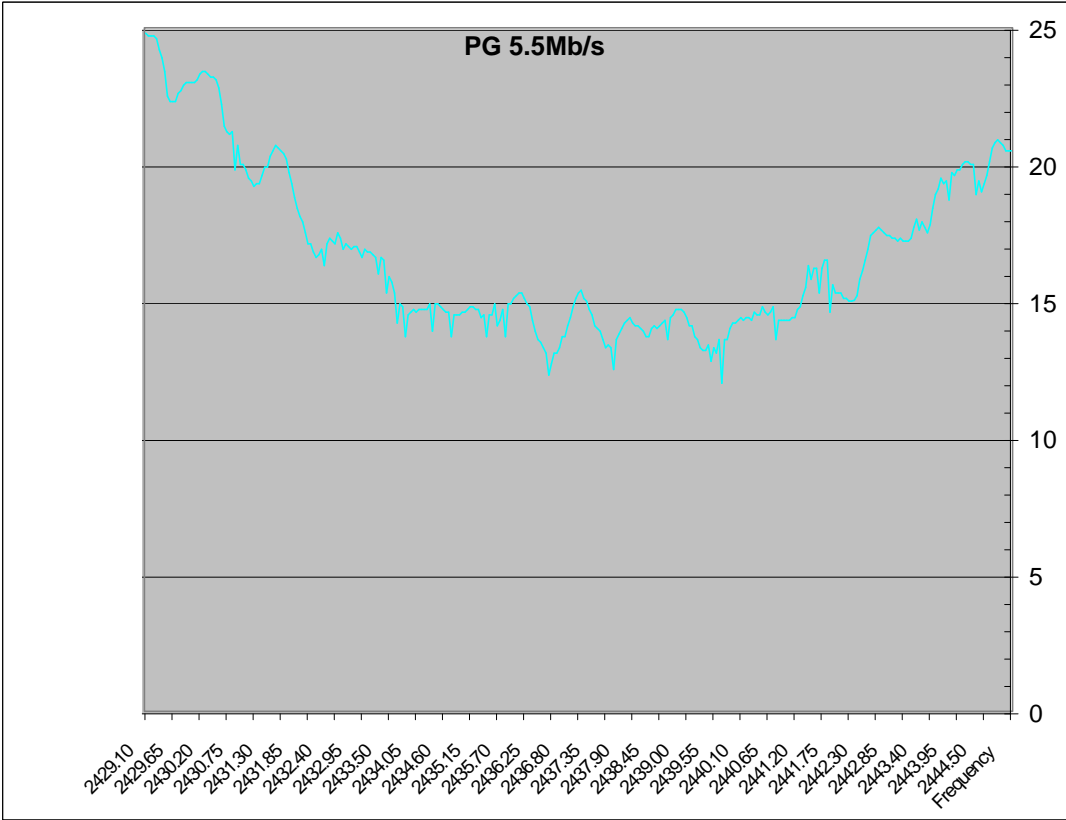
Frequency	Jammer Level	J/S	PG
2445.00	-54.4	5.1	20.5
2444.95	-54.4	5.1	20.5
2444.90	-54.4	5.1	20.5
2444.85	-54.2	5.3	20.7
2444.80	-54.1	5.4	20.8
2444.75	-54	5.5	20.9
2444.70	-54.1	5.4	20.8
2444.65	-54.3	5.2	20.6
2444.60	-54.8	4.7	20.1
2444.55	-55.3	4.2	19.6
2444.50	-55.6	3.9	19.3
2444.45	-55.9	3.6	19
2444.40	-55.5	4	19.4
2444.35	-56	3.5	18.9
2444.30	-54.9	4.6	20
2444.25	-54.9	4.6	20
2444.20	-54.8	4.7	20.1
2444.15	-54.8	4.7	20.1
2444.10	-54.9	4.6	20
2444.05	-55.1	4.4	19.8
2444.00	-55.1	4.4	19.8
2443.95	-55.3	4.2	19.6
2443.90	-55.2	4.3	19.7
2443.85	-56.2	3.3	18.7
2443.80	-55.5	4	19.4
2443.75	-55.6	3.9	19.3
2443.70	-55.4	4.1	19.5
2443.65	-55.8	3.7	19.1
2443.60	-56	3.5	18.9
2443.55	-56.5	3	18.4
2443.50	-57.1	2.4	17.8
2443.45	-57.4	2.1	17.5
2443.40	-57.2	2.3	17.7
2443.35	-57	2.5	17.9
2443.30	-57.3	2.2	17.6
2443.25	-56.9	2.6	18
2443.20	-57.2	2.3	17.7
2443.15	-57.6	1.9	17.3
2443.10	-57.7	1.8	17.2
2443.05	-57.7	1.8	17.2
2443.00	-57.7	1.8	17.2
2442.95	-57.6	1.9	17.3
2442.90	-57.7	1.8	17.2
2442.85	-57.6	1.9	17.3
2442.80	-57.6	1.9	17.3
2442.75	-57.5	2	17.4
2442.70	-57.5	2	17.4
2442.65	-57.4	2.1	17.5
2442.60	-57.3	2.2	17.6
2442.55	-57.2	2.3	17.7
2442.50	-57.3	2.2	17.6
2442.45	-57.4	2.1	17.5
2442.40	-57.5	2	17.4
2442.35	-58	1.5	16.9
2442.30	-58.4	1.1	16.5
2442.25	-58.8	0.7	16.1
2442.20	-59.1	0.4	15.8
2442.15	-59.7	-0.2	15.2
2442.10	-59.87	-0.37	15.03
2442.05	-59.9	-0.4	15
2442.00	-59.9	-0.4	15
2441.95	-59.8	-0.3	15.1
2441.90	-59.8	-0.3	15.1
2441.85	-59.6	-0.1	15.3
2441.80	-59.6	-0.1	15.3
2441.75	-59.6	-0.1	15.3
2441.70	-59.3	0.2	15.6
2441.65	-60.3	-0.8	14.6
2441.60	-58.4	1.1	16.5
2441.55	-58.4	1.1	16.5
2441.50	-58.7	0.8	16.2
2441.45	-59.6	-0.1	15.3
2441.40	-58.7	0.8	16.2
2441.35	-58.7	0.8	16.2
2441.30	-59.1	0.4	15.8
2441.25	-58.6	0.9	16.3
2441.20	-59.4	0.1	15.5
2441.15	-59.7	-0.2	15.2
2441.10	-60.1	-0.6	14.8

Processing Gain = 14.3

2441.05	-60.2	-0.7	14.7
2441.00	-60.5	-1	14.4
2440.95	-60.5	-1	14.4
2440.90	-60.6	-1.1	14.3
2440.85	-60.6	-1.1	14.3
2440.80	-60.6	-1.1	14.3
2440.75	-60.6	-1.1	14.3
2440.70	-60.6	-1.1	14.3
2440.65	-61.3	-1.8	13.6
2440.60	-60.1	-0.6	14.8
2440.55	-60.3	-0.8	14.6
2440.50	-60.4	-0.9	14.5
2440.45	-60.3	-0.8	14.6
2440.40	-60.1	-0.6	14.8
2440.35	-60.4	-0.9	14.5
2440.30	-60.4	-0.9	14.5
2440.25	-60.3	-0.8	14.6
2440.20	-60.6	-1.1	14.3
2440.15	-60.5	-1	14.4
2440.10	-60.5	-1	14.4
2440.05	-60.6	-1.1	14.3
2440.00	-60.5	-1	14.4
2439.95	-60.6	-1.1	14.3
2439.90	-60.7	-1.2	14.2
2439.85	-60.7	-1.2	14.2
2439.80	-60.9	-1.4	14
2439.75	-61.3	-1.8	13.6
2439.70	-61.3	-1.8	13.6
2439.65	-62.9	-3.4	12
2439.60	-61.3	-1.8	13.6
2439.55	-61.8	-2.3	13.1
2439.50	-61.6	-2.1	13.3
2439.45	-62.1	-2.6	12.8
2439.40	-61.5	-2	13.4
2439.35	-61.7	-2.2	13.2
2439.30	-61.7	-2.2	13.2
2439.25	-61.6	-2.1	13.3
2439.20	-61.3	-1.8	13.6
2439.15	-61.2	-1.7	13.7
2439.10	-60.8	-1.3	14.1
2439.05	-60.8	-1.3	14.1
2439.00	-60.5	-1	14.4
2438.95	-60.3	-0.8	14.6
2438.90	-60.2	-0.7	14.7
2438.85	-60.2	-0.7	14.7
2438.80	-60.2	-0.7	14.7
2438.75	-60.4	-0.9	14.5
2438.70	-60.5	-1	14.4
2438.65	-61.3	-1.8	13.6
2438.60	-60.6	-1.1	14.3
2438.55	-60.7	-1.2	14.2
2438.50	-60.8	-1.3	14.1
2438.45	-60.9	-1.4	14
2438.40	-60.8	-1.3	14.1
2438.35	-60.9	-1.4	14
2438.30	-61.2	-1.7	13.7
2438.25	-61.2	-1.7	13.7
2438.20	-61	-1.5	13.9
2438.15	-60.9	-1.4	14
2438.10	-60.8	-1.3	14.1
2438.05	-60.8	-1.3	14.1
2438.00	-60.7	-1.2	14.2
2437.95	-60.5	-1	14.4
2437.90	-60.6	-1.1	14.3
2437.85	-60.7	-1.2	14.2
2437.80	-60.9	-1.4	14
2437.75	-61.1	-1.6	13.8
2437.70	-61.3	-1.8	13.6
2437.65	-62.4	-2.9	12.5
2437.60	-61.6	-2.1	13.3
2437.55	-61.5	-2	13.4
2437.50	-61.6	-2.1	13.3
2437.45	-61.3	-1.8	13.6
2437.40	-61	-1.5	13.9
2437.35	-60.9	-1.4	14
2437.30	-60.8	-1.3	14.1
2437.25	-60.4	-0.9	14.5
2437.20	-60.2	-0.7	14.7
2437.15	-59.9	-0.4	15
2437.10	-59.8	-0.3	15.1
2437.05	-59.5	0	15.4
2437.00	-59.6	-0.1	15.3
2436.95	-59.8	-0.3	15.1
2436.90	-60.1	-0.6	14.8
2436.85	-60.5	-1	14.4
2436.80	-60.8	-1.3	14.1
2436.75	-61.2	-1.7	13.7
2436.70	-61.2	-1.7	13.7
2436.65	-61.6	-2.1	13.3
2436.60	-61.8	-2.3	13.1
2436.55	-61.8	-2.3	13.1
2436.50	-62.2	-2.7	12.7

2436.45	-62.6	-3.1	12.3
2436.40	-61.8	-2.3	13.1
2436.35	-61.6	-2.1	13.3
2436.30	-61.4	-1.9	13.5
2436.25	-61.3	-1.8	13.6
2436.20	-61	-1.5	13.9
2436.15	-60.6	-1.1	14.3
2436.10	-60.1	-0.6	14.8
2436.05	-60	-0.5	14.9
2436.00	-59.8	-0.3	15.1
2435.95	-59.6	-0.1	15.3
2435.90	-59.6	-0.1	15.3
2435.85	-59.7	-0.2	15.2
2435.80	-59.8	-0.3	15.1
2435.75	-60	-0.5	14.9
2435.70	-60	-0.5	14.9
2435.65	-61.2	-1.7	13.7
2435.60	-60.2	-0.7	14.7
2435.55	-60.6	-1.1	14.3
2435.50	-60.8	-1.3	14.1
2435.45	-60	-0.5	14.9
2435.40	-60.4	-0.9	14.5
2435.35	-60.4	-0.9	14.5
2435.30	-61.2	-1.7	13.7
2435.25	-60.4	-0.9	14.5
2435.20	-60.5	-1	14.4
2435.15	-60.2	-0.7	14.7
2435.10	-60.2	-0.7	14.7
2435.05	-60.1	-0.6	14.8
2435.00	-60.1	-0.6	14.8
2434.95	-60.2	-0.7	14.7
2434.90	-60.3	-0.8	14.6
2434.85	-60.3	-0.8	14.6
2434.80	-60.4	-0.9	14.5
2434.75	-60.4	-0.9	14.5
2434.70	-60.4	-0.9	14.5
2434.65	-61.2	-1.7	13.7
2434.60	-60.3	-0.8	14.6
2434.55	-60.3	-0.8	14.6
2434.50	-60.2	-0.7	14.7
2434.45	-60.1	-0.6	14.8
2434.40	-60	-0.5	14.9
2434.35	-60	-0.5	14.9
2434.30	-61	-1.5	13.9
2434.25	-60	-0.5	14.9
2434.20	-60.2	-0.7	14.7
2434.15	-60.2	-0.7	14.7
2434.10	-60.2	-0.7	14.7
2434.05	-60.2	-0.7	14.7
2434.00	-60.3	-0.8	14.6
2433.95	-60.2	-0.7	14.7
2433.90	-60.3	-0.8	14.6
2433.85	-60.4	-0.9	14.5
2433.80	-61.2	-1.7	13.7
2433.75	-60.1	-0.6	14.8
2433.70	-60	-0.5	14.9
2433.65	-60.7	-1.2	14.2
2433.60	-59.6	-0.1	15.3
2433.55	-59.2	0.3	15.7
2433.50	-59	0.5	15.9
2433.45	-59.6	-0.1	15.3
2433.40	-58.4	1.1	16.5
2433.35	-58.3	1.2	16.6
2433.30	-58.9	0.6	16
2433.25	-58.3	1.2	16.6
2433.20	-58.2	1.3	16.7
2433.15	-58.1	1.4	16.8
2433.10	-58.1	1.4	16.8
2433.05	-58	1.5	16.9
2433.00	-58.3	1.2	16.6
2432.95	-58.1	1.4	16.8
2432.90	-57.9	1.6	17
2432.85	-57.9	1.6	17
2432.80	-58	1.5	16.9
2432.75	-57.9	1.6	17
2432.70	-57.8	1.7	17.1
2432.65	-58	1.5	16.9
2432.60	-57.6	1.9	17.3
2432.55	-57.4	2.1	17.5
2432.50	-57.8	1.7	17.1
2432.45	-57.7	1.8	17.2
2432.40	-57.6	1.9	17.3
2432.35	-57.8	1.7	17.1
2432.30	-58.6	0.9	16.3
2432.25	-58	1.5	16.9
2432.20	-58.2	1.3	16.7
2432.15	-58.3	1.2	16.6
2432.10	-58.1	1.4	16.8
2432.05	-57.8	1.7	17.1
2432.00	-57.8	1.7	17.1
2431.95	-57.4	2.1	17.5
2431.90	-57	2.5	17.9

2431.85	-56.8	2.7	18.1
2431.80	-56.5	3	18.4
2431.75	-56.1	3.4	18.8
2431.70	-55.6	3.9	19.3
2431.65	-55.2	4.3	19.7
2431.60	-54.7	4.8	20.2
2431.55	-54.5	5	20.4
2431.50	-54.4	5.1	20.5
2431.45	-54.3	5.2	20.6
2431.40	-54.2	5.3	20.7
2431.35	-54.4	5.1	20.5
2431.30	-54.6	4.9	20.3
2431.25	-55	4.5	19.9
2431.20	-55	4.5	19.9
2431.15	-55.3	4.2	19.6
2431.10	-55.6	3.9	19.3
2431.05	-55.6	3.9	19.3
2431.00	-55.7	3.8	19.2
2430.95	-55.5	4	19.4
2430.90	-55.4	4.1	19.5
2430.85	-55.1	4.4	19.8
2430.80	-54.9	4.6	20
2430.75	-54.9	4.6	20
2430.70	-54.2	5.3	20.7
2430.65	-55.1	4.4	19.8
2430.60	-53.7	5.8	21.2
2430.55	-53.8	5.7	21.1
2430.50	-53.7	5.8	21.2
2430.45	-53.5	6	21.4
2430.40	-52.7	6.8	22.2
2430.35	-52.1	7.4	22.8
2430.30	-51.8	7.7	23.1
2430.25	-51.7	7.8	23.2
2430.20	-51.7	7.8	23.2
2430.15	-51.6	7.9	23.3
2430.10	-51.5	8	23.4
2430.05	-51.5	8	23.4
2430.00	-51.6	7.9	23.3
2429.95	-51.8	7.7	23.1
2429.90	-51.9	7.6	23
2429.85	-51.9	7.6	23
2429.80	-51.9	7.6	23
2429.75	-51.9	7.6	23
2429.70	-52	7.5	22.9
2429.65	-52.2	7.3	22.7
2429.60	-52.3	7.2	22.6
2429.55	-52.6	6.9	22.3
2429.50	-52.6	6.9	22.3
2429.45	-52.6	6.9	22.3
2429.40	-52.4	7.1	22.5
2429.35	-51.5	8	23.4
2429.30	-51	8.5	23.9
2429.25	-50.7	8.8	24.2
2429.20	-50.3	9.2	24.6
2429.15	-50.2	9.3	24.7
2429.10	-50.2	9.3	24.7
2429.05	-50.2	9.3	24.7
2429.00	-50.1	9.4	24.8



Processing Gain ISL37300XU USB Card

Data Rate 11Mb/s
 Symbol rate 1.375Ms/s
 Modulation CCK
 Theoretical required Es/No=16.4
 System Loss Lsys=2
 PG=Es/No+Lsys+J/S

Test Conditions:
 Desired Signal Es=-60dBm
 CR9=80;CR10=C9;CR47=9E;CR35=7F;
 Calibration has been performed by using Gigatron Power Meter in t
 and the card was running in the Continuous TX Mode in the PTTU.
 Frequency Channel 6

Frequency	Jammer Level	J/S	PG
2445.00	-54.80	4.70	23.1
2444.95	-54.20	5.30	23.7
2444.90	-54.20	5.30	23.7
2444.85	-54.30	5.20	23.6
2444.80	-54.90	4.60	23
2444.75	-54.90	4.60	23
2444.70	-55.40	4.10	22.5
2444.65	-55.70	3.80	22.2
2444.60	-56.00	3.50	21.9
2444.55	-56.00	3.50	21.9
2444.50	-56.10	3.40	21.8
2444.45	-56.40	3.10	21.5
2444.40	-56.50	3.00	21.4
2444.35	-56.70	2.80	21.2
2444.30	-56.60	2.90	21.3
2444.25	-57.60	1.90	20.3
2444.20	-57.20	2.30	20.7
2444.15	-57.20	2.30	20.7
2444.10	-57.50	2.00	20.4
2444.05	-58.40	1.10	19.5
2444.00	-59.50	0.00	18.4
2443.95	-58.60	0.90	19.3
2443.90	-58.70	0.80	19.2
2443.85	-58.90	0.60	19
2443.80	-59.20	0.30	18.7
2443.75	-60.30	-0.80	17.6
2443.70	-59.80	-0.30	18.1
2443.65	-59.90	-0.40	18
2443.60	-60.20	-0.70	17.7
2443.55	-60.40	-0.90	17.5
2443.50	-60.90	-1.40	17
2443.45	-60.90	-1.40	17
2443.40	-61.00	-1.50	16.9
2443.35	-61.40	-1.90	16.5
2443.30	-61.60	-2.10	16.3
2443.25	-62.40	-2.90	15.5
2443.20	-61.60	-2.10	16.3
2443.15	-61.60	-2.10	16.3
2443.10	-61.60	-2.10	16.3
2443.05	-61.70	-2.20	16.2
2443.00	-63.00	-3.50	14.9
2442.95	-62.60	-3.10	15.3
2442.90	-61.80	-2.30	16.1
2442.85	-61.70	-2.20	16.2
2442.80	-61.90	-2.40	16
2442.75	-64.80	-5.30	13.1
2442.70	-62.00	-2.50	15.9
2442.65	-62.10	-2.60	15.8
2442.60	-62.40	-2.90	15.5
2442.55	-62.60	-3.10	15.3
2442.50	-62.80	-3.30	15.1
2442.45	-63.00	-3.50	14.9
2442.40	-63.00	-3.50	14.9
2442.35	-63.70	-4.20	14.2
2442.30	-63.50	-4.00	14.4
2442.25	-63.60	-4.10	14.3
2442.20	-63.80	-4.30	14.1
2442.15	-63.90	-4.40	14
2442.10	-64.10	-4.60	13.8
2442.05	-64.20	-4.70	13.7
2442.00	-64.40	-4.90	13.5
2441.95	-64.80	-5.30	13.1
2441.90	-64.50	-5.00	13.4
2441.85	-64.50	-5.00	13.4
2441.80	-65.70	-6.20	12.2

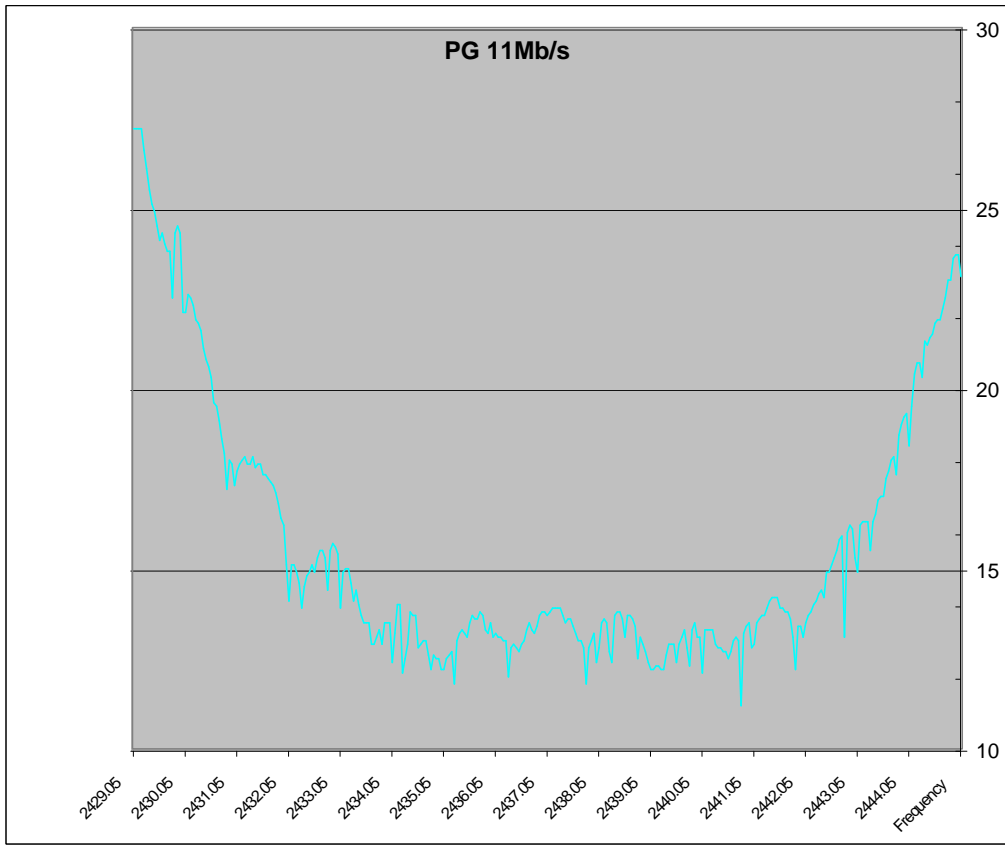
Processing Gain = 13.0

2441.75	-64.80	-5.30	13.1
2441.70	-64.30	-4.80	13.6
2441.65	-64.10	-4.60	13.8
2441.60	-64.10	-4.60	13.8
2441.55	-64.00	-4.50	13.9
2441.50	-64.00	-4.50	13.9
2441.45	-63.70	-4.20	14.2
2441.40	-63.70	-4.20	14.2
2441.35	-63.70	-4.20	14.2
2441.30	-63.80	-4.30	14.1
2441.25	-64.00	-4.50	13.9
2441.20	-64.20	-4.70	13.7
2441.15	-64.20	-4.70	13.7
2441.10	-64.30	-4.80	13.6
2441.05	-64.40	-4.90	13.5
2441.00	-65.00	-5.50	12.9
2440.95	-65.10	-5.60	12.8
2440.90	-64.40	-4.90	13.5
2440.85	-64.50	-5.00	13.4
2440.80	-64.70	-5.20	13.2
2440.75	-66.70	-7.20	11.2
2440.70	-64.90	-5.40	13
2440.65	-64.80	-5.30	13.1
2440.60	-64.90	-5.40	13
2440.55	-65.20	-5.70	12.7
2440.50	-65.40	-5.90	12.5
2440.45	-65.20	-5.70	12.7
2440.40	-65.20	-5.70	12.7
2440.35	-65.10	-5.60	12.8
2440.30	-65.10	-5.60	12.8
2440.25	-65.00	-5.50	12.9
2440.20	-64.60	-5.10	13.3
2440.15	-64.60	-5.10	13.3
2440.10	-64.60	-5.10	13.3
2440.05	-64.60	-5.10	13.3
2440.00	-65.80	-6.30	12.1
2439.95	-64.80	-5.30	13.1
2439.90	-64.80	-5.30	13.1
2439.85	-64.40	-4.90	13.5
2439.80	-64.60	-5.10	13.3
2439.75	-65.60	-6.10	12.3
2439.70	-65.10	-5.60	12.8
2439.65	-64.60	-5.10	13.3
2439.60	-64.80	-5.30	13.1
2439.55	-65.00	-5.50	12.9
2439.50	-65.50	-6.00	12.4
2439.45	-65.00	-5.50	12.9
2439.40	-65.00	-5.50	12.9
2439.35	-65.00	-5.50	12.9
2439.30	-65.30	-5.80	12.6
2439.25	-65.70	-6.20	12.2
2439.20	-65.70	-6.20	12.2
2439.15	-65.60	-6.10	12.3
2439.10	-65.60	-6.10	12.3
2439.05	-65.70	-6.20	12.2
2439.00	-65.70	-6.20	12.2
2438.95	-65.50	-6.00	12.4
2438.90	-65.20	-5.70	12.7
2438.85	-65.00	-5.50	12.9
2438.80	-64.80	-5.30	13.1
2438.75	-65.40	-5.90	12.5
2438.70	-64.50	-5.00	13.4
2438.65	-64.30	-4.80	13.6
2438.60	-64.20	-4.70	13.7
2438.55	-64.20	-4.70	13.7
2438.50	-64.80	-5.30	13.1
2438.45	-64.30	-4.80	13.6
2438.40	-64.10	-4.60	13.8
2438.35	-64.10	-4.60	13.8
2438.30	-64.20	-4.70	13.7
2438.25	-65.50	-6.00	12.4
2438.20	-65.20	-5.70	12.7
2438.15	-64.40	-4.90	13.5
2438.10	-64.30	-4.80	13.6
2438.05	-64.40	-4.90	13.5
2438.00	-65.10	-5.60	12.8
2437.95	-65.50	-6.00	12.4
2437.90	-64.70	-5.20	13.2
2437.85	-64.90	-5.40	13

2437.80	-65.10	-5.60	12.8
2437.75	-66.10	-6.60	11.8
2437.70	-65.10	-5.60	12.8
2437.65	-64.90	-5.40	13
2437.60	-64.90	-5.40	13
2437.55	-64.70	-5.20	13.2
2437.50	-64.50	-5.00	13.4
2437.45	-64.30	-4.80	13.6
2437.40	-64.30	-4.80	13.6
2437.35	-64.40	-4.90	13.5
2437.30	-64.20	-4.70	13.7
2437.25	-64.00	-4.50	13.9
2437.20	-64.00	-4.50	13.9
2437.15	-64.00	-4.50	13.9
2437.10	-64.00	-4.50	13.9
2437.05	-64.10	-4.60	13.8
2437.00	-64.20	-4.70	13.7
2436.95	-64.10	-4.60	13.8
2436.90	-64.10	-4.60	13.8
2436.85	-64.20	-4.70	13.7
2436.80	-64.50	-5.00	13.4
2436.75	-64.70	-5.20	13.2
2436.70	-64.60	-5.10	13.3
2436.65	-64.40	-4.90	13.5
2436.60	-64.60	-5.10	13.3
2436.55	-64.90	-5.40	13
2436.50	-65.00	-5.50	12.9
2436.45	-65.20	-5.70	12.7
2436.40	-65.10	-5.60	12.8
2436.35	-65.00	-5.50	12.9
2436.30	-65.10	-5.60	12.8
2436.25	-65.90	-6.40	12
2436.20	-64.90	-5.40	13
2436.15	-64.90	-5.40	13
2436.10	-64.80	-5.30	13.1
2436.05	-64.80	-5.30	13.1
2436.00	-64.70	-5.20	13.2
2435.95	-64.80	-5.30	13.1
2435.90	-64.40	-4.90	13.5
2435.85	-64.70	-5.20	13.2
2435.80	-64.60	-5.10	13.3
2435.75	-64.20	-4.70	13.7
2435.70	-64.10	-4.60	13.8
2435.65	-64.30	-4.80	13.6
2435.60	-64.30	-4.80	13.6
2435.55	-64.20	-4.70	13.7
2435.50	-64.40	-4.90	13.5
2435.45	-64.80	-5.30	13.1
2435.40	-64.70	-5.20	13.2
2435.35	-64.60	-5.10	13.3
2435.30	-64.70	-5.20	13.2
2435.25	-64.90	-5.40	13
2435.20	-66.10	-6.60	11.8
2435.15	-65.20	-5.70	12.7
2435.10	-65.30	-5.80	12.6
2435.05	-65.40	-5.90	12.5
2435.00	-65.70	-6.20	12.2
2434.95	-65.70	-6.20	12.2
2434.90	-65.40	-5.90	12.5
2434.85	-65.40	-5.90	12.5
2434.80	-65.30	-5.80	12.6
2434.75	-65.70	-6.20	12.2
2434.70	-65.30	-5.80	12.6
2434.65	-64.90	-5.40	13
2434.60	-64.90	-5.40	13
2434.55	-65.00	-5.50	12.9
2434.50	-65.10	-5.60	12.8
2434.45	-64.20	-4.70	13.7
2434.40	-64.20	-4.70	13.7
2434.35	-64.10	-4.60	13.8
2434.30	-65.00	-5.50	12.9
2434.25	-65.40	-5.90	12.5
2434.20	-65.80	-6.30	12.1
2434.15	-63.90	-4.40	14
2434.10	-63.90	-4.40	14
2434.05	-64.70	-5.20	13.2
2434.00	-65.50	-6.00	12.4
2433.95	-64.40	-4.90	13.5
2433.90	-64.40	-4.90	13.5

2433.85	-64.40	-4.90	13.5
2433.80	-65.00	-5.50	12.9
2433.75	-64.60	-5.10	13.3
2433.70	-64.80	-5.30	13.1
2433.65	-65.00	-5.50	12.9
2433.60	-65.00	-5.50	12.9
2433.55	-64.40	-4.90	13.5
2433.50	-64.40	-4.90	13.5
2433.45	-64.40	-4.90	13.5
2433.40	-64.20	-4.70	13.7
2433.35	-63.90	-4.40	14
2433.30	-63.50	-4.00	14.4
2433.25	-63.80	-4.30	14.1
2433.20	-63.30	-3.80	14.6
2433.15	-62.90	-3.40	15
2433.10	-62.90	-3.40	15
2433.05	-63.00	-3.50	14.9
2433.00	-64.00	-4.50	13.9
2432.95	-62.50	-3.00	15.4
2432.90	-62.30	-2.80	15.6
2432.85	-62.20	-2.70	15.7
2432.80	-62.40	-2.90	15.5
2432.75	-63.50	-4.00	14.4
2432.70	-62.60	-3.10	15.3
2432.65	-62.40	-2.90	15.5
2432.60	-62.40	-2.90	15.5
2432.55	-62.60	-3.10	15.3
2432.50	-63.00	-3.50	14.9
2432.45	-62.80	-3.30	15.1
2432.40	-63.00	-3.50	14.9
2432.35	-63.10	-3.60	14.8
2432.30	-63.40	-3.90	14.5
2432.25	-64.00	-4.50	13.9
2432.20	-63.30	-3.80	14.6
2432.15	-63.00	-3.50	14.9
2432.10	-62.80	-3.30	15.1
2432.05	-62.80	-3.30	15.1
2432.00	-63.80	-4.30	14.1
2431.95	-62.80	-3.30	15.1
2431.90	-61.70	-2.20	16.2
2431.85	-61.50	-2.00	16.4
2431.80	-61.10	-1.60	16.8
2431.75	-60.80	-1.30	17.1
2431.70	-60.60	-1.10	17.3
2431.65	-60.50	-1.00	17.4
2431.60	-60.40	-0.90	17.5
2431.55	-60.30	-0.80	17.6
2431.50	-60.30	-0.80	17.6
2431.45	-60.00	-0.50	17.9
2431.40	-60.00	-0.50	17.9
2431.35	-60.10	-0.60	17.8
2431.30	-59.80	-0.30	18.1
2431.25	-60.00	-0.50	17.9
2431.20	-60.00	-0.50	17.9
2431.15	-59.80	-0.30	18.1
2431.10	-59.90	-0.40	18
2431.05	-60.00	-0.50	17.9
2431.00	-60.20	-0.70	17.7
2430.95	-60.60	-1.10	17.3
2430.90	-60.00	-0.50	17.9
2430.85	-59.90	-0.40	18
2430.80	-60.70	-1.20	17.2
2430.75	-59.70	-0.20	18.2
2430.70	-59.30	0.20	18.6
2430.65	-58.80	0.70	19.1
2430.60	-58.40	1.10	19.5
2430.55	-58.30	1.20	19.6
2430.50	-57.60	1.90	20.3
2430.45	-57.30	2.20	20.6
2430.40	-57.10	2.40	20.8
2430.35	-56.80	2.70	21.1
2430.30	-56.30	3.20	21.6
2430.25	-56.10	3.40	21.8
2430.20	-56.00	3.50	21.9
2430.15	-55.60	3.90	22.3
2430.10	-55.40	4.10	22.5
2430.05	-55.30	4.20	22.6
2430.00	-55.80	3.70	22.1
2429.95	-55.80	3.70	22.1

2429.90	-53.60	5.90	24.3
2429.85	-53.40	6.10	24.5
2429.80	-53.60	5.90	24.3
2429.75	-55.40	4.10	22.5
2429.70	-54.10	5.40	23.8
2429.65	-54.10	5.40	23.8
2429.60	-53.90	5.60	24
2429.55	-53.60	5.90	24.3
2429.50	-53.80	5.70	24.1
2429.45	-53.40	6.10	24.5
2429.40	-53.00	6.50	24.9
2429.35	-52.80	6.70	25.1
2429.30	-52.40	7.10	25.5
2429.25	-51.80	7.70	26.1
2429.20	-51.30	8.20	26.6
2429.15	-50.70	8.80	27.2
2429.10	-50.70	8.80	27.2
2429.05	-50.70	8.80	27.2
2429.00	-50.70	8.80	27.2



Processing Gain ISL37300XU USB Card

Data Rate 11Mb/s
 Symbol rate 1.375Ms/s
 Modulation CCK
 Theoretical required Es/No=16.4
 System Loss Lsys=2
 PG=Es/No+Lsys+J/S

Test Conditions:
 Desired Signal Es=-60dBm
 CR9=80;CR10=C9;CR47=9E;CR35=7F;
 Calibration has been performed by using Gigatronic Power Meter in the MAP mc
 and the card was running in the Continuous TX Mode in the PTTU.
 Frequency Channel 11

Frequency	Jammer Level	J/S	PG
2470.00	-55.40	5.00	23.40
2469.95	-54.40	6.00	24.40
2469.90	-54.50	5.90	24.30
2469.85	-54.50	5.90	24.30
2469.80	-55.20	5.20	23.60
2469.75	-55.10	5.30	23.70
2469.70	-55.80	4.60	23.00
2469.65	-56.00	4.40	22.80
2469.60	-56.10	4.30	22.70
2469.55	-56.00	4.40	22.80
2469.50	-56.20	4.20	22.60
2469.45	-56.40	4.00	22.40
2469.40	-56.60	3.80	22.20
2469.35	-56.80	3.60	22.00
2469.30	-56.90	3.50	21.90
2469.25	-57.80	2.60	21.00
2469.20	-57.40	3.00	21.40
2469.15	-57.40	3.00	21.40
2469.10	-57.90	2.50	20.90
2469.05	-58.70	1.70	20.10
2469.00	-59.30	1.10	19.50
2468.95	-58.80	1.60	20.00
2468.90	-59.00	1.40	19.80
2468.85	-59.20	1.20	19.60
2468.80	-59.60	0.80	19.20
2468.75	-60.50	-0.10	18.30
2468.70	-60.00	0.40	18.80
2468.65	-60.20	0.20	18.60
2468.60	-60.40	0.00	18.40
2468.55	-60.60	-0.20	18.20
2468.50	-61.10	-0.70	17.70
2468.45	-61.10	-0.70	17.70
2468.40	-61.30	-0.90	17.50
2468.35	-61.50	-1.10	17.30
2468.30	-61.90	-1.50	16.90
2468.25	-62.70	-2.30	16.10
2468.20	-61.90	-1.50	16.90
2468.15	-61.90	-1.50	16.90
2468.10	-61.90	-1.50	16.90
2468.05	-62.00	-1.60	16.80
2468.00	-63.60	-3.20	15.20
2467.95	-62.90	-2.50	15.90
2467.90	-62.20	-1.80	16.60
2467.85	-62.10	-1.70	16.70
2467.80	-62.40	-2.00	16.40
2467.75	-62.40	-2.00	16.40
2467.70	-62.50	-2.10	16.30
2467.65	-62.70	-2.30	16.10
2467.60	-62.90	-2.50	15.90
2467.55	-63.20	-2.80	15.60
2467.50	-63.50	-3.10	15.30
2467.45	-63.60	-3.20	15.20
2467.40	-63.70	-3.30	15.10
2467.35	-63.90	-3.50	14.90
2467.30	-63.90	-3.50	14.90
2467.25	-64.00	-3.60	14.80
2467.20	-64.20	-3.80	14.60
2467.15	-64.20	-3.80	14.60
2467.10	-64.30	-3.90	14.50
2467.05	-64.50	-4.10	14.30
2467.00	-64.70	-4.30	14.10
2466.95	-65.30	-4.90	13.50
2466.90	-64.70	-4.30	14.10
2466.85	-64.70	-4.30	14.10
2466.80	-65.80	-5.40	13.00

Processing Gain = 13.5

2466.75	-64.90	-4.50	13.90
2466.70	-64.60	-4.20	14.20
2466.65	-64.30	-3.90	14.50
2466.60	-64.20	-3.80	14.60
2466.55	-64.30	-3.90	14.50
2466.50	-64.00	-3.60	14.80
2466.45	-63.90	-3.50	14.90
2466.40	-64.00	-3.60	14.80
2466.35	-64.10	-3.70	14.70
2466.30	-64.10	-3.70	14.70
2466.25	-64.20	-3.80	14.60
2466.20	-64.50	-4.10	14.30
2466.15	-64.60	-4.20	14.20
2466.10	-64.60	-4.20	14.20
2466.05	-64.60	-4.20	14.20
2466.00	-65.50	-5.10	13.30
2465.95	-65.50	-5.10	13.30
2465.90	-64.90	-4.50	13.90
2465.85	-65.00	-4.60	13.80
2465.80	-65.30	-4.90	13.50
2465.75	-67.10	-6.70	11.70
2465.70	-65.30	-4.90	13.50
2465.65	-65.30	-4.90	13.50
2465.60	-65.30	-4.90	13.50
2465.55	-65.40	-5.00	13.40
2465.50	-65.70	-5.30	13.10
2465.45	-65.40	-5.00	13.40
2465.40	-65.40	-5.00	13.40
2465.35	-65.10	-4.70	13.70
2465.30	-65.20	-4.80	13.60
2465.25	-65.20	-4.80	13.60
2465.20	-64.80	-4.40	14.00
2465.15	-64.70	-4.30	14.10
2465.10	-64.80	-4.40	14.00
2465.05	-64.80	-4.40	14.00
2465.00	-66.40	-6.00	12.40
2464.95	-65.20	-4.80	13.60
2464.90	-65.20	-4.80	13.60
2464.85	-64.80	-4.40	14.00
2464.80	-65.00	-4.60	13.80
2464.75	-66.00	-5.60	12.80
2464.70	-65.60	-5.20	13.20
2464.65	-65.30	-4.90	13.50
2464.60	-65.40	-5.00	13.40
2464.55	-65.70	-5.30	13.10
2464.50	-66.00	-5.60	12.80
2464.45	-65.70	-5.30	13.10
2464.40	-65.60	-5.20	13.20
2464.35	-65.70	-5.30	13.10
2464.30	-65.90	-5.50	12.90
2464.25	-66.00	-5.60	12.80
2464.20	-66.00	-5.60	12.80
2464.15	-65.90	-5.50	12.90
2464.10	-65.90	-5.50	12.90
2464.05	-65.90	-5.50	12.90
2464.00	-66.00	-5.60	12.80
2463.95	-65.50	-5.10	13.30
2463.90	-65.30	-4.90	13.50
2463.85	-65.10	-4.70	13.70
2463.80	-64.90	-4.50	13.90
2463.75	-65.50	-5.10	13.30
2463.70	-64.60	-4.20	14.20
2463.65	-64.50	-4.10	14.30
2463.60	-64.50	-4.10	14.30
2463.55	-64.50	-4.10	14.30
2463.50	-65.20	-4.80	13.60
2463.45	-64.70	-4.30	14.10
2463.40	-64.60	-4.20	14.20
2463.35	-64.60	-4.20	14.20
2463.30	-64.80	-4.40	14.00
2463.25	-66.10	-5.70	12.70
2463.20	-65.70	-5.30	13.10
2463.15	-65.10	-4.70	13.70
2463.10	-65.00	-4.60	13.80
2463.05	-65.00	-4.60	13.80
2463.00	-65.60	-5.20	13.20
2462.95	-65.20	-4.80	13.60
2462.90	-65.40	-5.00	13.40
2462.85	-65.40	-5.00	13.40

2462.80	-65.40	-5.00	13.40
2462.75	-66.30	-5.90	12.50
2462.70	-65.30	-4.90	13.50
2462.65	-65.20	-4.80	13.60
2462.60	-65.20	-4.80	13.60
2462.55	-64.90	-4.50	13.90
2462.50	-64.70	-4.30	14.10
2462.45	-64.60	-4.20	14.20
2462.40	-64.40	-4.00	14.40
2462.35	-64.50	-4.10	14.30
2462.30	-64.20	-3.80	14.60
2462.25	-64.20	-3.80	14.60
2462.20	-64.30	-3.90	14.50
2462.15	-64.30	-3.90	14.50
2462.10	-64.30	-3.90	14.50
2462.05	-64.50	-4.10	14.30
2462.00	-64.80	-4.40	14.00
2461.95	-64.60	-4.20	14.20
2461.90	-64.80	-4.40	14.00
2461.85	-64.80	-4.40	14.00
2461.80	-65.20	-4.80	13.60
2461.75	-65.40	-5.00	13.40
2461.70	-65.20	-4.80	13.60
2461.65	-65.10	-4.70	13.70
2461.60	-65.10	-4.70	13.70
2461.55	-65.30	-4.90	13.50
2461.50	-65.50	-5.10	13.30
2461.45	-65.60	-5.20	13.20
2461.40	-65.50	-5.10	13.30
2461.35	-65.40	-5.00	13.40
2461.30	-65.30	-4.90	13.50
2461.25	-66.20	-5.80	12.60
2461.20	-65.60	-5.20	13.20
2461.15	-65.00	-4.60	13.80
2461.10	-64.80	-4.40	14.00
2461.05	-64.70	-4.30	14.10
2461.00	-64.70	-4.30	14.10
2460.95	-64.90	-4.50	13.90
2460.90	-64.50	-4.10	14.30
2460.85	-64.60	-4.20	14.20
2460.80	-64.70	-4.30	14.10
2460.75	-64.60	-4.20	14.20
2460.70	-64.50	-4.10	14.30
2460.65	-64.80	-4.40	14.00
2460.60	-64.80	-4.40	14.00
2460.55	-64.90	-4.50	13.90
2460.50	-65.10	-4.70	13.70
2460.45	-65.60	-5.20	13.20
2460.40	-65.40	-5.00	13.40
2460.35	-65.20	-4.80	13.60
2460.30	-65.40	-5.00	13.40
2460.25	-65.60	-5.20	13.20
2460.20	-66.40	-6.00	12.40
2460.15	-65.70	-5.30	13.10
2460.10	-65.70	-5.30	13.10
2460.05	-65.80	-5.40	13.00
2460.00	-66.30	-5.90	12.50
2459.95	-65.90	-5.50	12.90
2459.90	-65.70	-5.30	13.10
2459.85	-65.50	-5.10	13.30
2459.80	-65.60	-5.20	13.20
2459.75	-65.60	-5.20	13.20
2459.70	-65.10	-4.70	13.70
2459.65	-65.10	-4.70	13.70
2459.60	-64.90	-4.50	13.90
2459.55	-65.10	-4.70	13.70
2459.50	-64.90	-4.50	13.90
2459.45	-64.40	-4.00	14.40
2459.40	-64.40	-4.00	14.40
2459.35	-64.50	-4.10	14.30
2459.30	-65.30	-4.90	13.50
2459.25	-66.10	-5.70	12.70
2459.20	-66.20	-5.80	12.60
2459.15	-64.60	-4.20	14.20
2459.10	-64.50	-4.10	14.30
2459.05	-65.40	-5.00	13.40
2459.00	-66.50	-6.10	12.30
2458.95	-64.90	-4.50	13.90
2458.90	-64.80	-4.40	14.00

2458.85	-65.00	-4.60	13.80
2458.80	-65.50	-5.10	13.30
2458.75	-65.20	-4.80	13.60
2458.70	-65.10	-4.70	13.70
2458.65	-65.20	-4.80	13.60
2458.60	-65.10	-4.70	13.70
2458.55	-64.80	-4.40	14.00
2458.50	-64.50	-4.10	14.30
2458.45	-64.30	-3.90	14.50
2458.40	-64.20	-3.80	14.60
2458.35	-63.70	-3.30	15.10
2458.30	-63.50	-3.10	15.30
2458.25	-64.10	-3.70	14.70
2458.20	-63.30	-2.90	15.50
2458.15	-62.90	-2.50	15.90
2458.10	-62.80	-2.40	16.00
2458.05	-63.20	-2.80	15.60
2458.00	-64.20	-3.80	14.60
2457.95	-62.90	-2.50	15.90
2457.90	-62.70	-2.30	16.10
2457.85	-62.70	-2.30	16.10
2457.80	-62.80	-2.40	16.00
2457.75	-63.90	-3.50	14.90
2457.70	-63.10	-2.70	15.70
2457.65	-63.00	-2.60	15.80
2457.60	-63.10	-2.70	15.70
2457.55	-63.10	-2.70	15.70
2457.50	-63.50	-3.10	15.30
2457.45	-63.30	-2.90	15.50
2457.40	-63.30	-2.90	15.50
2457.35	-63.60	-3.20	15.20
2457.30	-63.70	-3.30	15.10
2457.25	-64.30	-3.90	14.50
2457.20	-63.50	-3.10	15.30
2457.15	-63.30	-2.90	15.50
2457.10	-63.00	-2.60	15.80
2457.05	-62.90	-2.50	15.90
2457.00	-63.80	-3.40	15.00
2456.95	-63.50	-3.10	15.30
2456.90	-61.40	-1.00	17.40
2456.85	-61.20	-0.80	17.60
2456.80	-61.20	-0.80	17.60
2456.75	-61.00	-0.60	17.80
2456.70	-60.70	-0.30	18.10
2456.65	-60.50	-0.10	18.30
2456.60	-60.50	-0.10	18.30
2456.55	-60.50	-0.10	18.30
2456.50	-60.40	0.00	18.40
2456.45	-60.30	0.10	18.50
2456.40	-60.40	0.00	18.40
2456.35	-60.40	0.00	18.40
2456.30	-60.30	0.10	18.50
2456.25	-60.20	0.20	18.60
2456.20	-60.30	0.10	18.50
2456.15	-60.30	0.10	18.50
2456.10	-61.30	-0.90	17.50
2456.05	-60.40	0.00	18.40
2456.00	-60.80	-0.40	18.00
2455.95	-61.00	-0.60	17.80
2455.90	-61.30	-0.90	17.50
2455.85	-60.20	0.20	18.60
2455.80	-61.00	-0.60	17.80
2455.75	-59.90	0.50	18.90
2455.70	-59.40	1.00	19.40
2455.65	-58.90	1.50	19.90
2455.60	-58.60	1.80	20.20
2455.55	-58.30	2.10	20.50
2455.50	-57.60	2.80	21.20
2455.45	-57.20	3.20	21.60
2455.40	-57.10	3.30	21.70
2455.35	-56.80	3.60	22.00
2455.30	-56.40	4.00	22.40
2455.25	-56.20	4.20	22.60
2455.20	-56.10	4.30	22.70
2455.15	-55.90	4.50	22.90
2455.10	-55.60	4.80	23.20
2455.05	-55.60	4.80	23.20
2455.00	-56.20	4.20	22.60
2454.95	-56.00	4.40	22.80

2454.90	-55.10	5.30	23.70
2454.85	-54.90	5.50	23.90
2454.80	-55.10	5.30	23.70
2454.75	-56.00	4.40	22.80
2454.70	-54.60	5.80	24.20
2454.65	-54.50	5.90	24.30
2454.60	-54.20	6.20	24.60
2454.55	-54.20	6.20	24.60
2454.50	-53.80	6.60	25.00
2454.45	-53.60	6.80	25.20
2454.40	-53.00	7.40	25.80
2454.35	-53.00	7.40	25.80
2454.30	-52.50	7.90	26.30
2454.25	-51.90	8.50	26.90
2454.20	-51.20	9.20	27.60
2454.15	-50.70	9.70	28.10
2454.10	-50.60	9.80	28.20
2454.05	-50.60	9.80	28.20
2454.00	-50.60	9.80	28.20

