

PRISM[®] 3 11 Mbps Wireless Local Area Network PCMCIA



The Intersil ISL37101P WLAN PCMCIA (Note 1) is a complete wireless high speed Network Interface Card (NIC) utilizing the Intersil

PRISM[®] 3 Direct Sequence Spread Spectrum (DSSS) Wireless Transceiver chip set. It provides a complete PRISM 3 reference design evaluation platform of hardware and software to system providers or integrators requiring wireless data communications capability and is ideal for integration into computer platforms.

Evaluation kits include a pair of WLAN PCMCIA cards designed to Intersil's PRISM reference design, Microsoft Windows[®] Driver, Local Area Network evaluation software, PRISM Transmitter Test Utilities (PTTU) software (Note 3) and documentation to get your evaluation started quickly. It supports the IEEE 802.11b network specification for DSSS signaling, providing data rates of 1, 2, 5.5 and 11Mbps. Access Points are available from a number of suppliers, enabling a total wireless network solution Typical operating ranges are shown in Table 1.

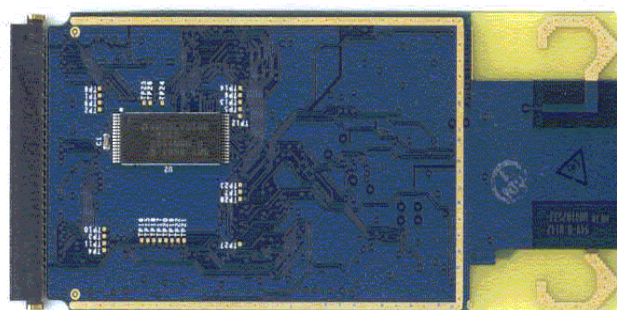
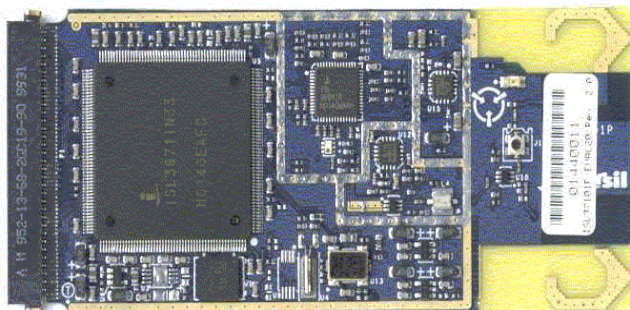
TABLE 1. TYPICAL OPERATING RANGE (Notes 2)

DATA RATE (Mbps)	INDOOR RANGE	OUTDOOR RANGE
11	120 feet (37 meters)	400 feet (152 meters)
5.5	200 feet (61 meters)	800 feet (243 meters)
2	240 feet (73 meters)	1300 feet (396 meters)
1	300 feet (91 meters)	1750 feet (533 meters)

Ordering Information

PART NUMBER	DESCRIPTION	CARDS/SET
ISL37101P-EVAL	WLAN Evaluation Kit	2
ISL37101P-CD	Reference Design	N/A

Packaging



Features

- FCC Certified Under Part 15 to Operate in 2.4GHz ISM Band
- Support for 11, 5.5, 2 and 1 Megabit Per Second (Mbps) Data Rates
- Supports the IEEE 802.11b Direct Sequence Specification
- Driver Supports Microsoft Windows[®] 95, 98, 2000, NT, CE, XP and LINUX[®]
- Supports Dual Diversity Antennas
- Advanced RAKE Receiver Design with Decision Feedback Equalizer
- Provides Wireless Data Communications at Full Ethernet Speed
- Designed to Fully Support PCMCIA Type II Defined Mechanical and Environmental Stress Conditions
- Intelligent Power Control, Including Low Power Standby Mode
- Complete Reference Design, the ISL37101P-CD is available to ensure minimum time-to-market

NOTES:

1. Throughout this document, all references to 'PCMCIA', 'WLAN adapter', 'adapter', or 'card' refer to a card assembly conforming to the mechanical size specifications of the PCMCIA Type 3A.
2. The range will vary in different operating environments due to effects such as building construction.
3. At present, PTTU supports Windows 95, 98, NT, 2000 and ME

PRISM[®] is a registered trademark of Intersil Americas Inc.
 PRISM and design is a trademark of Intersil Americas Inc.
 Microsoft[®] Windows[®] and Microsoft[®] Windows NT[®] are registered trademarks of Microsoft Corporation. LINUX[®] is a registered trademark of Linus Torvalds.

Functional Overview

The WLAN PCMCIA is designed to operate in the 2.4GHz ISM frequency band, channels 1 to 11, as specified by the FCC in the USA. The Card will also operate on channels 12 through 14, where permitted by local regulatory authorities. Radio equipment must be certified in a country prior to use. Refer to Table 3 for a list of countries and agencies that have approved the ISL37101P-EVAL for operation.

The Intersil PRISM Chip Set allows for high level integration for reduced size, increased throughput, improved radio performance and faster time to market. The WLAN PCMCIA implements Direct Sequence Spread Spectrum DSSS technology providing superior noise and signal jamming immunity including less severe impact from unintentional radiators such as microwave ovens. The user can connect the PCMCIA in an ad-hoc peer to peer networking scheme, allowing for instant network setup in any office environment. By using an access point, the wireless LAN can be set up to allow for a greater number of users to interconnect, and to increase the coverage area. With a portal (i.e., Access Point), the wireless LAN can be easily connected into an existing wired LAN, allowing for easy expansion of the service.

Compared to the PRISM II chip set, the PRISM 3 generation offers:

- Front end designed for maximum range
- Higher level of chip integration and less peripheral components to reduce material costs (3-chip solution)
- Support of optional IEEE 802.11 Short Preamble for significantly increased data throughput with room for additional user defined functions
- Has a PCMCIA interface / Type 3A form factor

A complete Reference Design for the ISL37101P is available to ensure minimum time-to-market. This information contains details for manufacturing a PCMCIA WLAN assembly, including Gerber PC board files, an accurate Bill of Material with component sourcing and complete mechanical drawings and a complete Radio Description and test plan.

Related Literature

- Tech Brief TB337, Intersil Corporation, "A Brief Tutorial on Spread Spectrum and Packet Radio"[1].
- Application Note AN9861, Intersil Corporation, "ISL37101P-EVAL PRISM 3 11 Mb PCMCIA Wireless LAN Radio Description" [2].
- Tech Brief TB382, Intersil Corporation, "Measurement of WLAN Receiver Sensitivity" [3].
- Application Note AN9850, Intersil Corporation, "Complementary Code Keying Made Simple" [4].
- Application Note AN9829, Intersil Corporation, "Brief Tutorial on IEEE 802.11 Wireless LANs" [5].
- Application Note AN9820, Intersil Corporation, "A Condensed Review of Spread Spectrum Techniques for ISM Band Systems" [6].

The ISL3871 Media Access Controller (MAC) Protocol Handler

The ISL3871 MAC/Baseband Processor and its firmware are responsible for running the IEEE 802.11 protocol in the WLAN card. This section describes the features of IEEE 802.11 that are implemented.

The functions supported by the STA (station) Firmware are:

- CSMA/CA (Carrier Sense Multiple Access with Collision Avoidance) with Random Backoff
- WEP Security
- Short/Long Preamble with multirate
- RTS/CTS Handshake (Ready To Send/Clear To Send) and NAV Management (Network Allocation Vector)
- MAC Level Acknowledgments (Media Access Control)
- Re-Transmission of Unacknowledged Frames
- Duplicate Detection and Rejection
- Broadcast and Multicast Frames
- Fragmentation and Re-Assembly
- Power Management (Planned)
- Timestamp Synchronization
- DCF (Distributed Coordination Function)
- PCF (Point Coordination Function)
- Beacon Generation in an Ad-Hoc Network
- Probe Response Generation in an Ad-Hoc Network

Card Information Structure

The standard Intersil WLAN PCMCIA will be supplied with information embedded in the Card Information Structure (CIS) shown in Table 2. It should be noted that in most systems this information is displayed when the card is inserted. Customization of the CIS for specific customer requirements is available upon request, to enable customer information to be displayed when the card is inserted.

TABLE 2. CIS Embedded Information

FUNCTION NAME	CONTENT
Manufacturer	Intersil
Product	PRISM 3 PCMCIA Adapter
Part Number	ISL37101P
Revision String	Eval-Rev-A
Revision #	1.0
Manufacturer ID	000B
Device ID	7101

IEEE 802.11 International Agreement and Frequency Assignments

The IEEE 802.11WLAN committee has forged an international agreement providing for wireless data communication standards for the frequency range of 2.4GHz to 2.4835GHz, as allocated by the FCC in the USA, and in the 2.471GHz to 2.497GHz frequency range, as specified by the regulatory authority in Japan. These standards are designed to focus the industry to develop highly integrated, low cost, interoperable WLAN equipment, of which the ISL37101P-EVAL is a prime example.

In the U.S., there are 11 channels specified by the FCC in the 2.412GHz to 2.462GHz range. In Japan, channel 14 at 2.484GHz is authorized under ARIB STD-33 and channels 1-13 are authorized under ARIB STD-T66. The ETSI (European) regulatory body conforms to the USA (FCC) channel assignments with the exception that channels 12 and 13 are also allowed. Some countries in Europe, notably France and Spain have unique channel restrictions.

Although information contained in Table 3 is deemed to be accurate, local regulatory authorities should be consulted before using such equipment.

The available channels of operation in the 2.4GHz to 2.4835GHz and 2.471GHz to 2.497GHz ranges are as follows:

TABLE 3. IEEE 802.11 CHANNELS

CHANNEL NUMBER	CHANNEL FREQUENCY	GEOGRAPHIC USAGE
1	2412MHz	US, CA, ETSI, MKK
2	2417MHz	US, CA, ETSI, MKK
3	2422MHz	US, CA, ETSI, MKK
4	2427MHz	US, CA, ETSI, MKK
5	2432MHz	US, CA, ETSI, MKK
6	2437MHz	US, CA, ETSI, MKK
7	2442MHz	US, CA, ETSI, MKK
8	2447MHz	US, CA, ETSI, MKK
9	2452MHz	US, CA, ETSI, MKK
10	2457MHz	US, CA, ETSI, MKK, FR, SP
11	2462MHz	US, CA, ETSI, MKK, FR, SP
12	2467MHz	ETSI, FR, MKK
13	2472MHz	ETSI, FR, MKK
14	2484MHz	MKK

KEY:

US = United States, CA = Canada, ETSI = European countries (except France and Spain), FR = France, SP = Spain, MKK = Japan

The ISL37101P is shipped with FCC-compliant firmware. In order to ensure regulatory-compliant channel usage in a particular country, special geographic-specific firmware is available for customer production assemblies which restricts channel usage. Examples include ETSI-compliant firmware, etc. Since the end user does not have the ability to alter this firmware, regulatory compliance is ensured.

Agency and Regulatory Body Approvals

The WLAN PCMCIA will comply to the standards shown in Table 4:

TABLE 4. COMPLIANCE STANDARDS

COUNTRY	APPROVAL	NOTES
USA	FCC part 15, Sec. 15.247, Sec. 15.107 and 15.109	Approval pending for Intentional Radiators & Computer Peripheral
Canada	ICAN RSS-210	Designed for compliance
Europe	EN 60950 EN 301 489-1 V1.2.1 (2000-08) EN 301 489-17 V1.1.1 (2000-09) EN 300 328 Part 1 V1.2.2 (2000-07) EN 300 328 Part 2 V1.1.1 (2000-07)	Designed for compliance
Japan	ARIB STD-T66 ARIB STD-33	Designed for compliance

FCC Information to User

This product does not contain any user serviceable components and is to be used with approved antennas only. Any product changes or modifications will invalidate all applicable regulatory certifications and approvals.

FCC Electronic Emission Notices

This device complies with part 15 of the FCC Rules. Operation is subject to the following two conditions:

1. This device may not cause harmful interference
2. This device must accept any interference received, including interference that may cause undesired operation.

FCC Radio Frequency Interference statement

This equipment has been tested and found to comply with the limits for a class B digital device, pursuant to Part 15 of the FCC Rules. These limits are designed to provide reasonable protection against harmful interference when the equipment is operated in a commercial environment. This equipment generates, uses and can radiate radio frequency energy and, if not installed and used in accordance with the instructions, may cause harmful interference to radio communications.

Operation of this equipment in a residential area may cause harmful interference in which case the user will be required to correct the interference at his own expense.

If this equipment does cause harmful interference to radio or television reception, which can be determined by turning the equipment off and on, the user is encouraged to try to correct the interference by one or more of the following measures:

- Reorient or relocate the receiving antenna.
- Increase the separation between the equipment and receiver.
- Connect the equipment into an outlet on a circuit different from that to which the receiver is connected.
- Consult the dealer or an experienced radio/TV technician for help.

Export restrictions

This product or software contains encryption code which may not be exported or transferred from the US or Canada without an approved US Department of Commerce export license.

FCC Guidelines for Human Exposure

The EIRP was measured for the lower, middle and highest frequencies used by the transmitter. The results in Table 5 are based on a safe distance between antenna and operator of **8 inches (20 centimeters)**. The equipment therefore fulfills the requirements on power density for general population / uncontrolled exposure of 1.0 mW/cm² and therefore complies with the requirements of FCC part 15.247 (b) (4) and FCC OET Bulletin 65 including supplements A, B and C.

TABLE 5. POWER DENSITY CALCULATION

	Ch.1	Ch.6	Ch.11
Measured EIRP (mW)	63.2	51.4	48.0
Specific Absorption Rate (SAR, mW/cm ²)	0.05	0.04	0.04

WARNING! Any changes or modifications of equipment not expressly approved by Intersil could void the user’s authority to operate the equipment.

Caution: To comply with FCC RF exposure compliance requirements, a separation distance of at least 20 cm must be maintained between the antenna of this device and all persons.

3.3V PCMCIA Interface Standard

CAUTION: This assembly is designed to operate with a supply voltage of 3.3V in laptop computers supporting the PCMCIA standard.

CAUTION: Do not force engagement of the card in the PCMCIA slot. It is mechanically designed to prevent improper insertion.

Permanent damage may occur if operated outside of the specified operating limits listed in this document.

References

For Intersil documents available on the internet, see web site <http://www.intersil.com/>

- [1] *TB337 Tech Brief*, Intersil Corporation, “A Brief Tutorial on Spread Spectrum and Packet Radio”.
- [2] *AN9861 Application Note*, Intersil Corporation, “ISL37101P-EVAL PRISM 3 11 Mb PCMCIA Wireless LAN Radio Description”
- [3] *TB382 Tech Brief*, Intersil Corporation, “Measurement of WLAN Receiver Sensitivity”.
- [4] *AN9850 Application Note*, Intersil Corporation, “Complementary Code Keying Made Simple”.
- [5] *AN9829 Application Note*, Intersil Corporation, “Brief Tutorial on IEEE 802.11 Wireless LANs”.
- [6] *AN9820 Application Note*, Intersil Corporation, “A Condensed Review of Spread Spectrum Techniques for ISM Band Systems”.

Further information can be found in the following:

- Intersil PRISM 3 Chip Set datasheets, web home page, <http://www.intersil.com/design/prism/ser-p30-11mbps.asp>
- IEEE 802.11 Standards Project (available from the IEEE, New York, USA).

ISL37101P-EVAL

Absolute Maximum Ratings

Supply Voltage -0.3V to 4.0V (Max)
 Storage Temperature (Note 4) -20°C to 85°C

Operating Conditions

Temperature Range $0^{\circ}\text{C} \leq T_A \leq 70^{\circ}\text{C}$
 Supply Voltage Range 3.0V to 3.6V

Caution: These are the absolute maximum ratings for the PCMCIA product. Exceeding these limits could cause permanent damage to the card.

NOTE:

4. All temperature references refer to ambient conditions.

Electrical Specifications Test Conditions: Supply Voltage (V_{CC}) = 3.3V, Ambient Temperature (T_A) = 25°C, Unless Otherwise Specified

PARAMETER	SYMBOL	TEST CONDITIONS	MIN	TYP	MAX	UNITS
CURRENT CONSUMPTION						
Initialization Current	I_{CC}			145		mA
Quiescent Current	I_{CC}			40		mA
Continuous Transmit Mode	I_{CC}			280		mA
Continuous Receive Mode	I_{CC}	Receiving Valid Packets		260		mA
IEEE 802.11 Power Save Mode	I_{CC}	RX On, 100 msec Beacon Intervals		55		mA
PCMCIA LOGIC LEVELS						
Input HIGH Voltage	V_{IH}	$V_{CC}=\text{Max, Min}$	0.7 V_{CC}			V
Input LOW Voltage	V_{IL}	$V_{CC}=\text{Min, Max}$			0.3 V_{CC}	V
Output HIGH Voltage	V_{OH}	$I_{OL} = 2\text{mA}, V_{CC}=\text{Min}$		2.6		V
Output LOW Voltage	V_{OL}	$I_{OL} = 2\text{mA}, V_{CC}=\text{Min}$		0.05		V
Input Leakage Current	I_I	$V_{CC}=\text{Max, Input}=0\text{V or }V_{CC}$		0.1	1.0	μA
PCMCIA LOADING CAPACITANCE						
Input Capacitance	C_{IN}			5	10	pF
Output Capacitance	C_{OUT}			5	10	pF
RF SYSTEM SPECIFICATIONS						
Transmitter Power Output (excluding 2.5 dBi antenna gain)	P_{out}			15.5		dBm
Receive Sensitivity	RX_S	1 Mbps, 8% PER		-91		dBm
		2 Mbps, 8% PER		-88		dBm
		5.5 Mbps, 8% PER		-87		dBm
		11 Mbps, 8% PER		-84		dBm
Multipath Delay Spread Using IEEE 802.11 Naftali Model	T_{DELAY}	1 Mbps, 8% PER		>290		ns
		2 Mbps, 8% PER		>290		ns
		5.5 Mbps, 8% PER		166		ns
		11 Mbps, 8% PER		90		ns

ISL37101P-EVAL

Electrical Specifications Test Conditions: Supply Voltage (V_{CC}) = 3.3V, Ambient Temperature (T_A) = 25°C,
Unless Otherwise Specified **(Continued)**

PARAMETER	SYMBOL	TEST CONDITIONS	MIN	TYP	MAX	UNITS
Multipath Receive Sensitivity Using JTC Models (note 5.)	RX_SJTC	1 Mbps, 8% PER, JTC Commercial B (150 nsec)		-82		dBm
		2 Mbps, 8% PER, JTC Commercial B (150 nsec)		-80		dBm
		5.5 Mbps, 8% PER, JTC Commercial B (150 nsec)		-76		dBm
		11 Mbps, 8% PER, JTC Office B (100 nsec)		-67		dBm
Maximum Receive Level	RX_MAX	PER <8%		+3		dBm
Third Order Intercept Point (Input)	IIP3_90	-90 dBm input		-3		dBm
	IIP3_25	-25 dBm input		20		dBm
Carrier Suppression	TX_sup	Test Mode		42.5		dB
Image Rejection	IR	PER <8%		60		dB
Adjacent Channel Rejection	ACR	PER <8% (Note 6)		46		dB
Data Rate (Physical Layer)	Rate			1, 2, 5.5 and 11		Mbps

NOTES:

5. For more information, refer to Intersil Application Note AN9895 "Multipath Measurement in Wireless LANs"
6. The adjacent channel measurement is carried out on two channels separated by 25MHz (5 channels).

All Intersil products are manufactured, assembled and tested utilizing ISO9000 quality systems.
Intersil Corporation's quality certifications can be viewed at www.intersil.com/design/quality

Intersil products are sold by description only. Intersil Corporation reserves the right to make changes in circuit design and/or specifications at any time without notice. Accordingly, the reader is cautioned to verify that data sheets are current before placing orders. Information furnished by Intersil is believed to be accurate and reliable. However, no responsibility is assumed by Intersil or its subsidiaries for its use; nor for any infringements of patents or other rights of third parties which may result from its use. No license is granted by implication or otherwise under any patent or patent rights of Intersil or its subsidiaries.

For information regarding Intersil Corporation and its products, see www.intersil.com

Sales Office Headquarters

NORTH AMERICA

Intersil Corporation
7585 Irvine Center Drive
Suite 100
Irvine, CA 92618
TEL: (949) 341-7000
FAX: (949) 341-7123

Intersil Corporation
2401 Palm Bay Rd.
Palm Bay, FL 32905
TEL: (321) 724-7000
FAX: (321) 724-7946

EUROPE

Intersil Europe Sarl
Ave. C - F Ramuz 43
CH-1009 Pully
Switzerland
TEL: +41 21 7293637
FAX: +41 21 7293684

ASIA

Intersil Corporation
Unit 1804 18/F Guangdong Water Building
83 Austin Road
TST, Kowloon Hong Kong
TEL: +852 2723 6339
FAX: +852 2730 1433