

Operation Description (RF Section)

1. Device concept

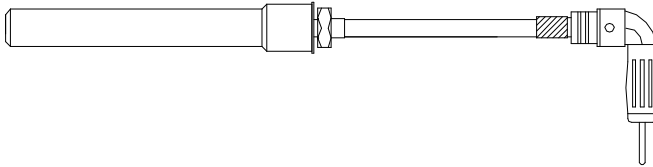
A radio frequency enables it for this equipment to operate the function of receiving receptacle a vehicle door inquiry opening and closing and an alarm.

2. Each section of Device

- 2 - 1 ANTENNA
- 2 - 2 FM OSCILLATOR
- 2 - 3 POWER

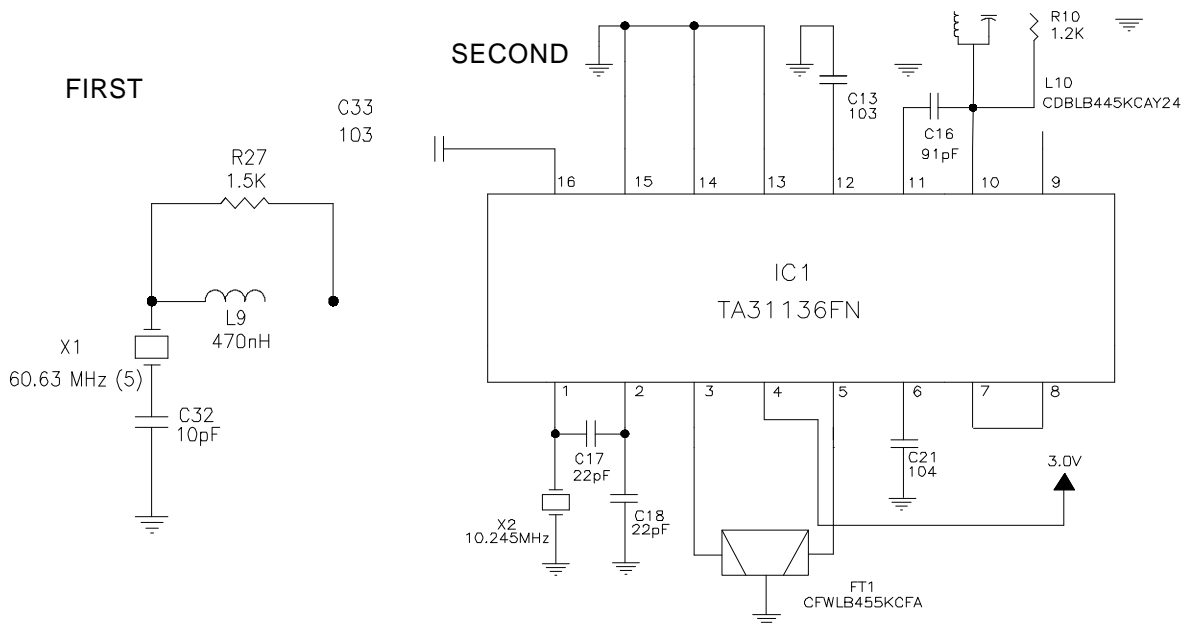
3. Explanation of each section

3 - 1 ANTENNA Section



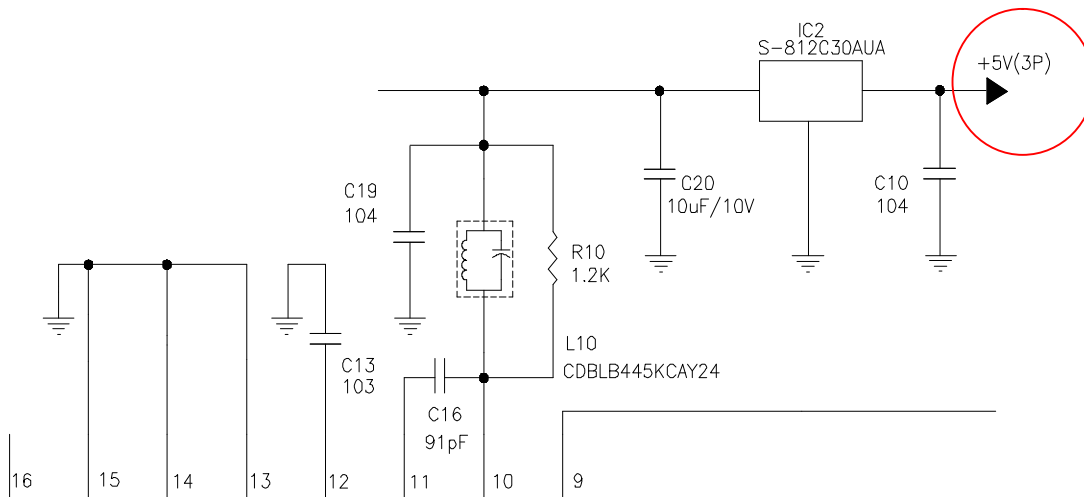
Antenna is composed with Wire Coil Antenna-Jack , and radiates radio frequency through the air.

3 - 2 FM Oscillation section



FM oscillation section oscillates with , first oscillation is 60.63 MHz X-Tal Frequency, second oscillation is 10.245 MHz X-Tal Frequency, by the FSK modulation method, FM bands of frequency which is required for FM frequency transmission.

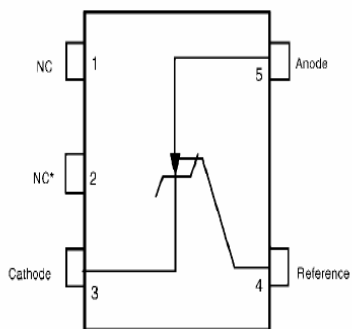
3 - 3 Power section



1 portion is a portion which always supplies 5V through DC/DC conversion from Car Battery.

DC/DC Conversion (TS431)

SOT23-5
(Top view)



* Do not connect this pin or connect it to ground

OPERATING CONDITIONS

Symbol	Parameter	Value	Unit
V_{KA}	Cathode to Anode Voltage	1.24 to 6	V
I_k	Cathode Current	0.06 to 30	mA