

Test setup photos of EUT

Orthogonal plane of EUT

- The testing was set in the below orthogonal plane and measured.

X-axis



Photos of Radiated Spurious Emission Test (Below 1 GHz)

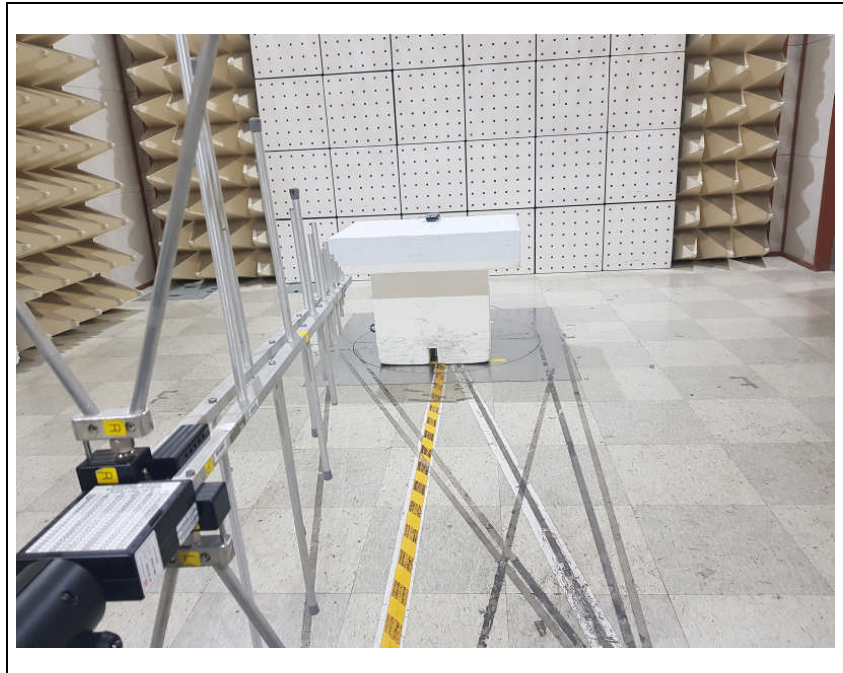
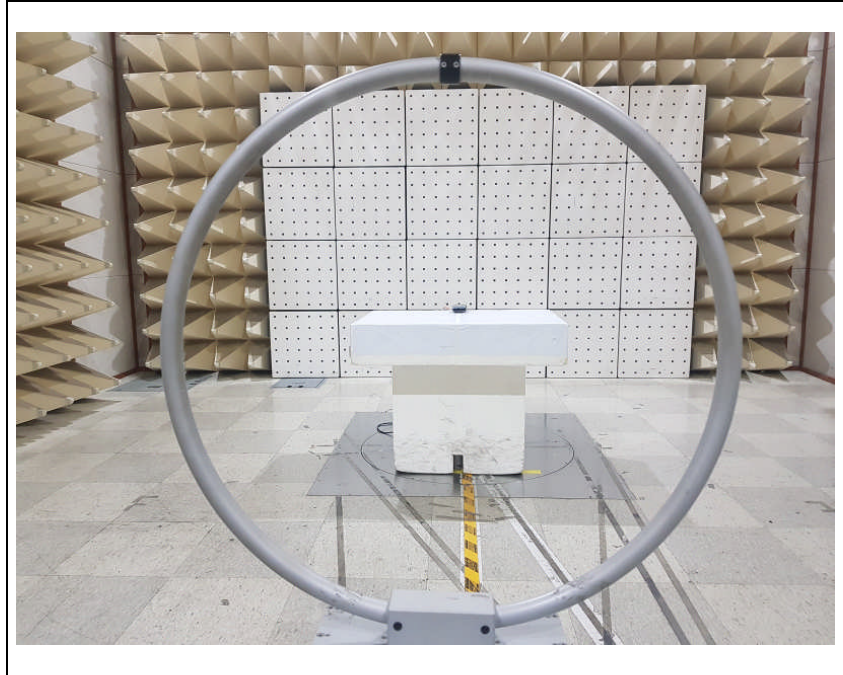
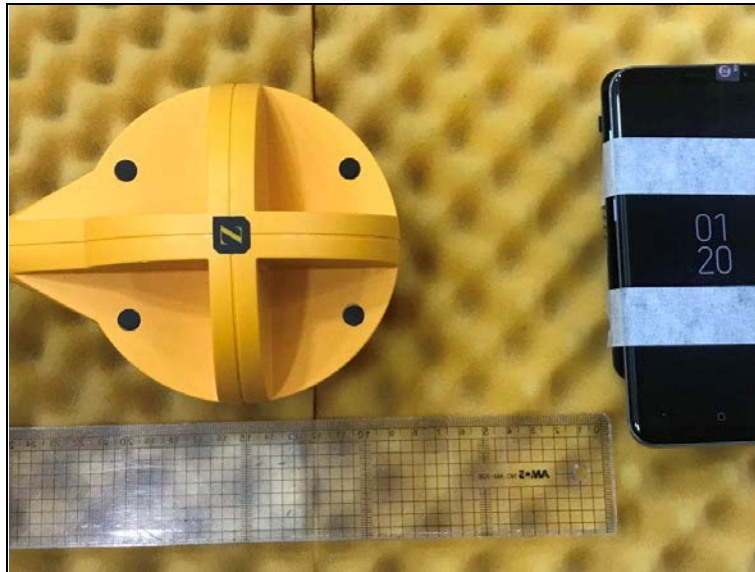
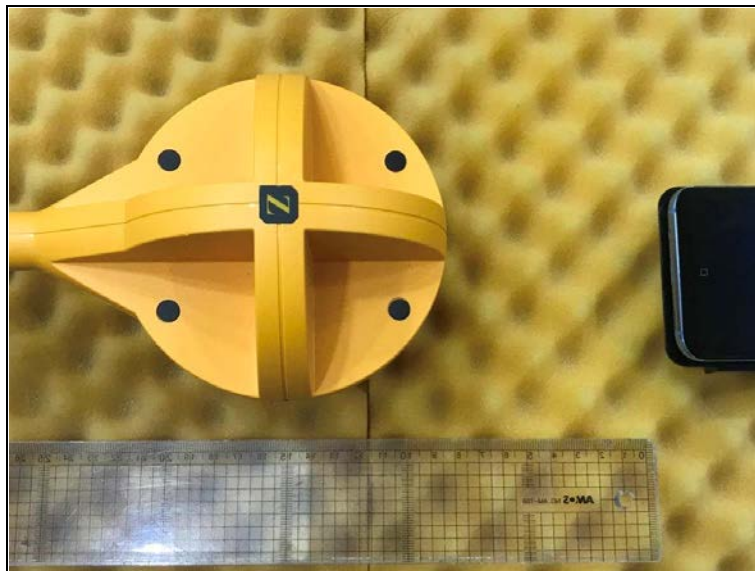


Photo of MPE Test Set up at 15 cm distance (B-field)

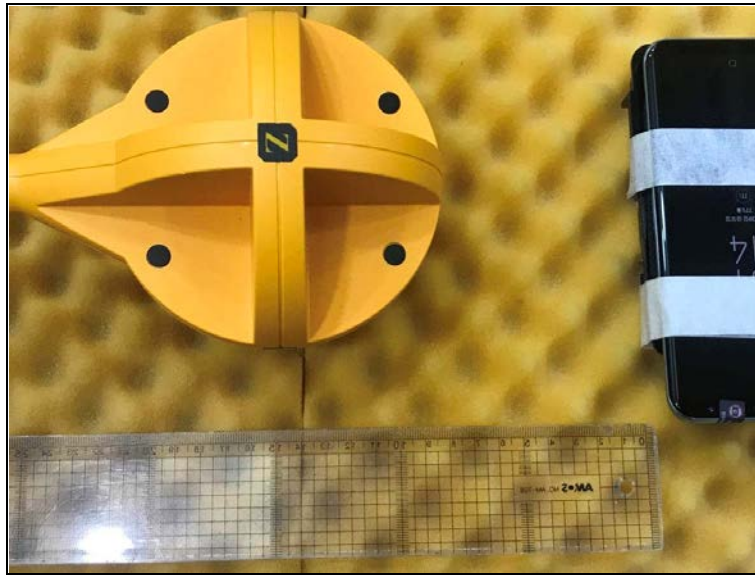
Position A



Position B



Position C



Position D

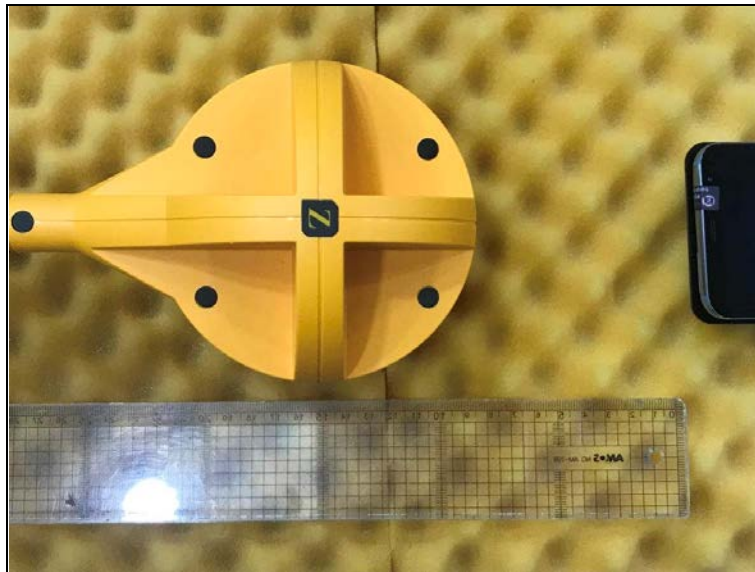
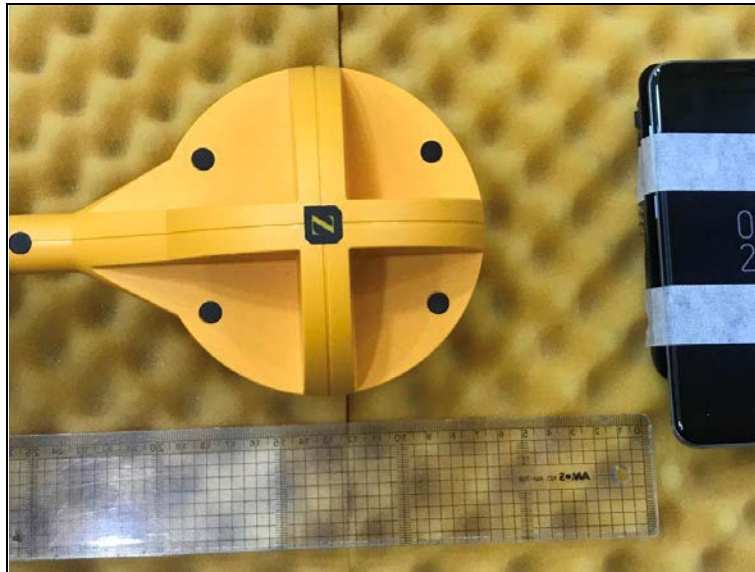


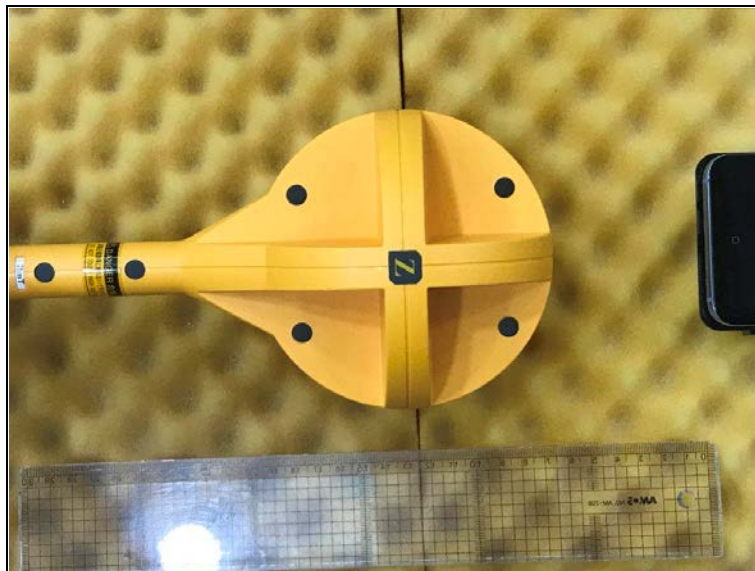


Photo of MPE Test Set up at 13 cm distance (B-field)

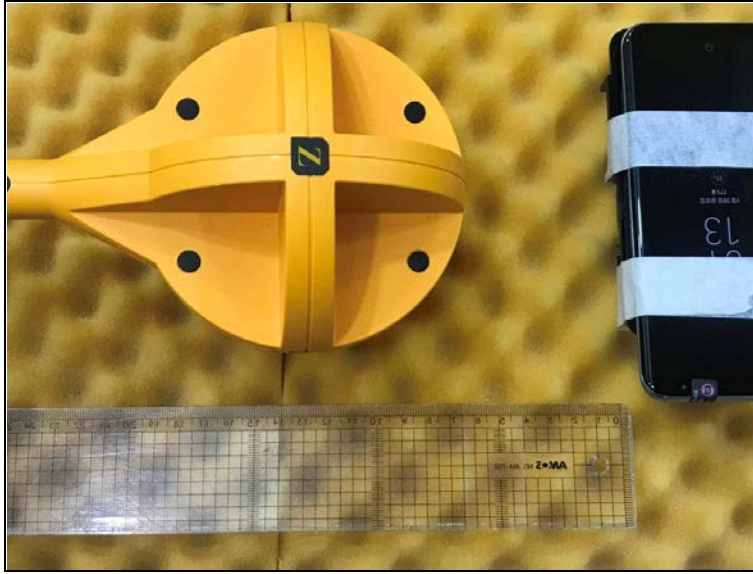
Position A



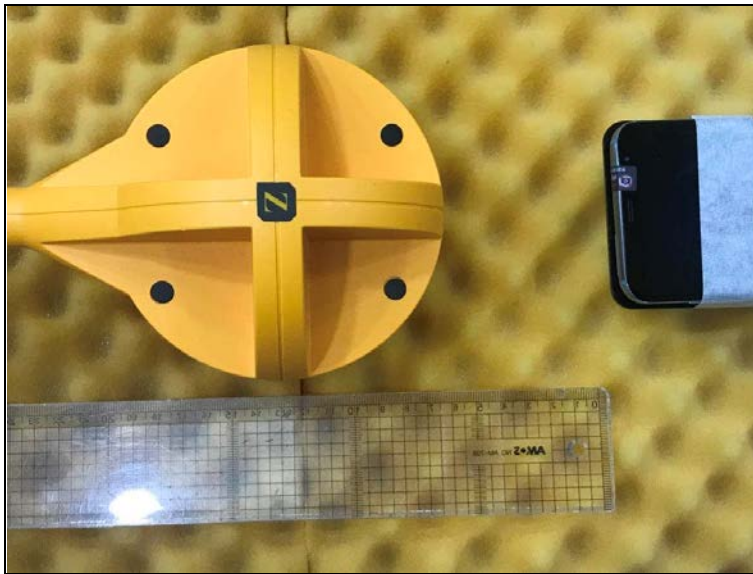
Position B



Position C



Position D



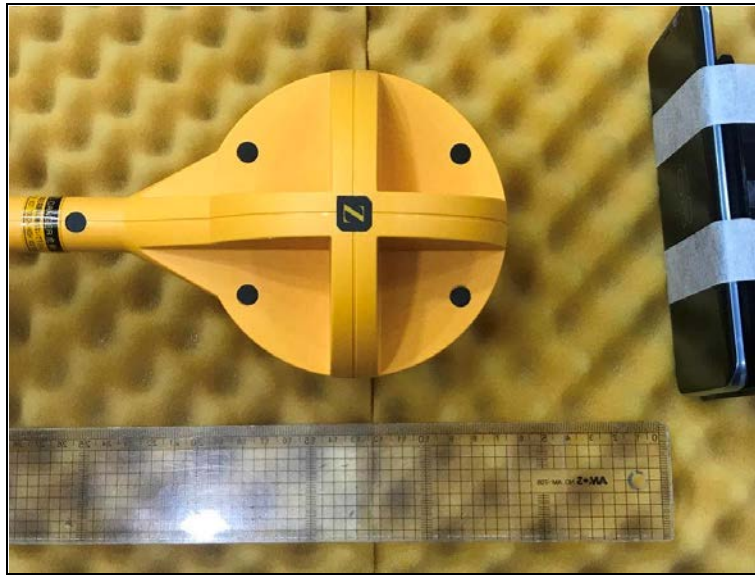
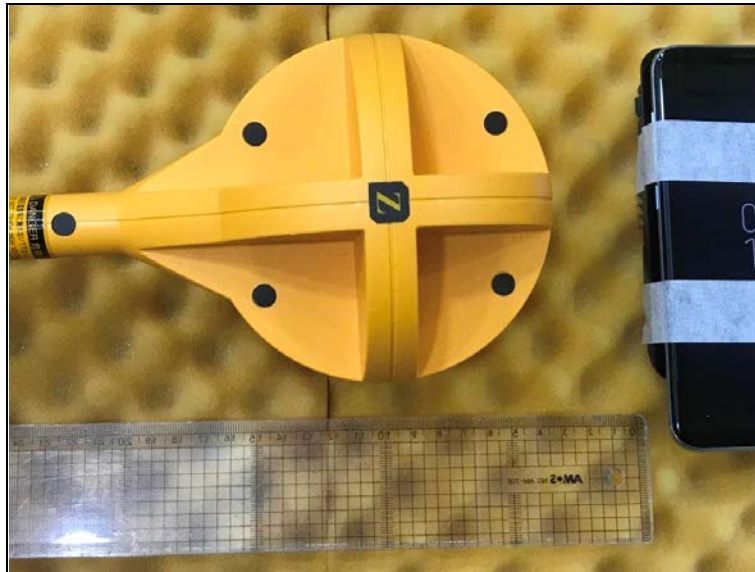
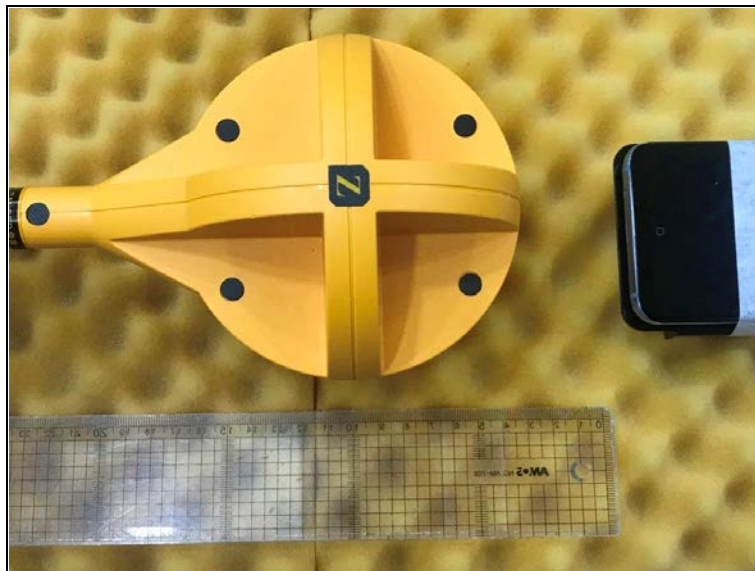


Photo of MPE Test Set up at 10 cm distance (B-field)

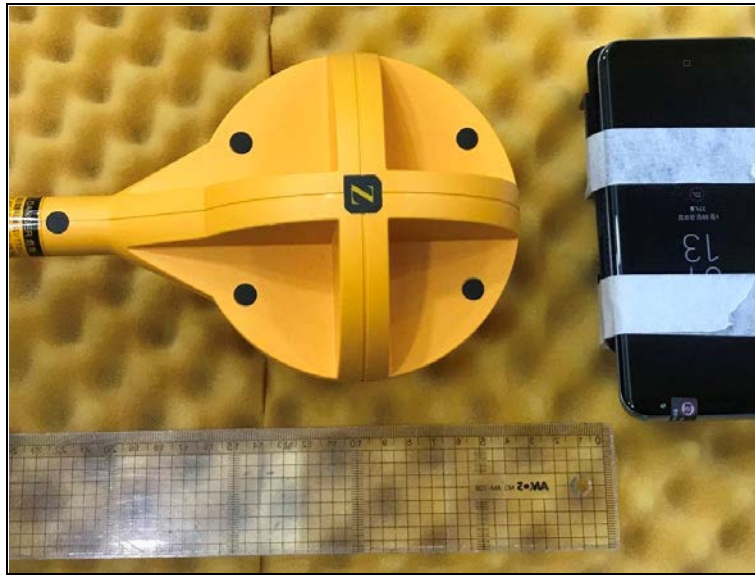
Position A



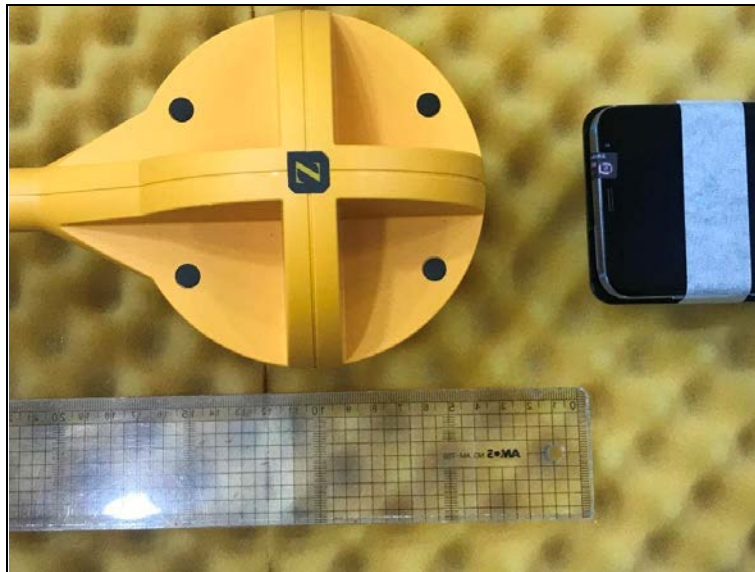
Position B



Position C



Position D



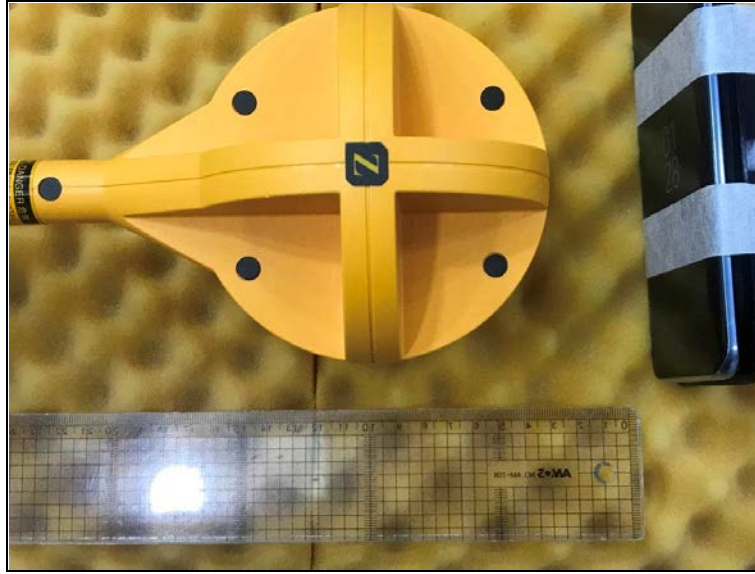
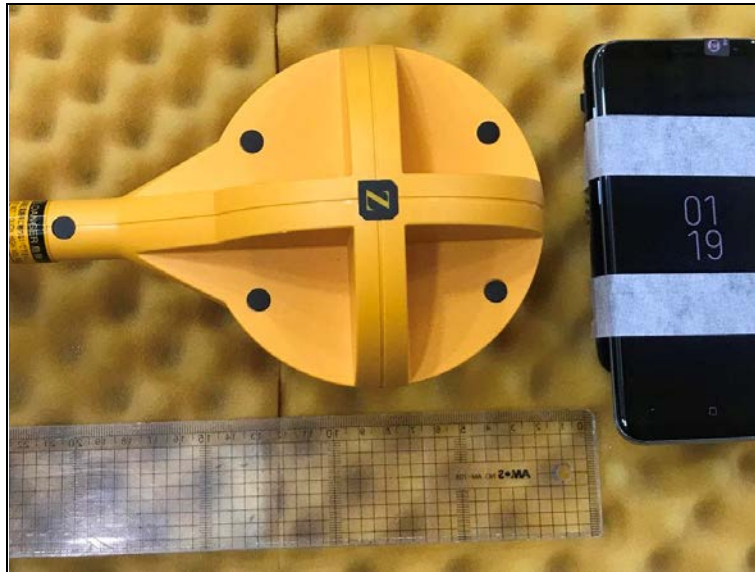
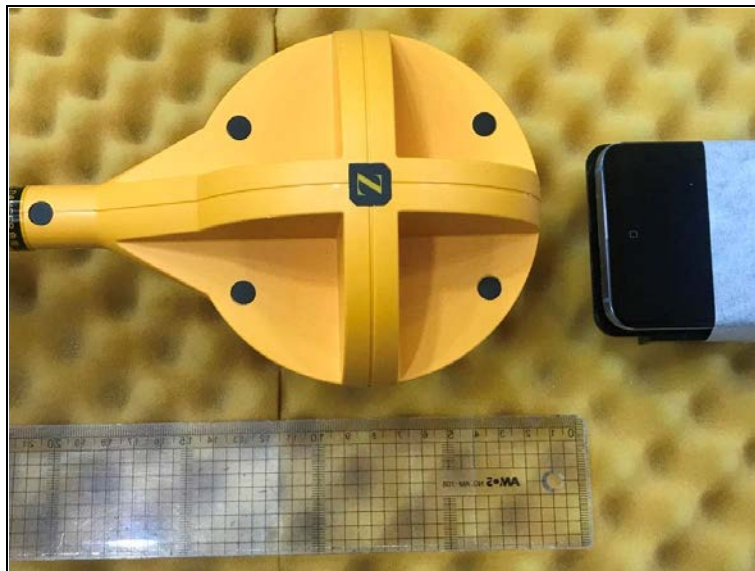


Photo of MPE Test Set up at 8 cm distance (B-field)

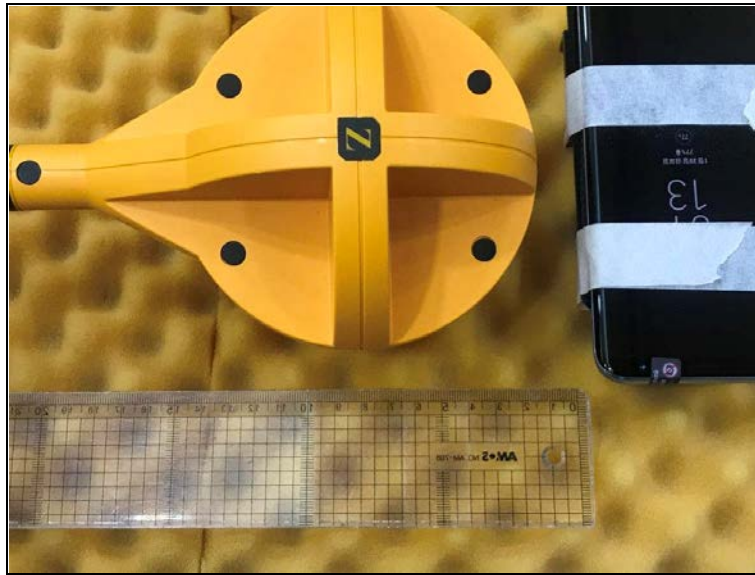
Position A



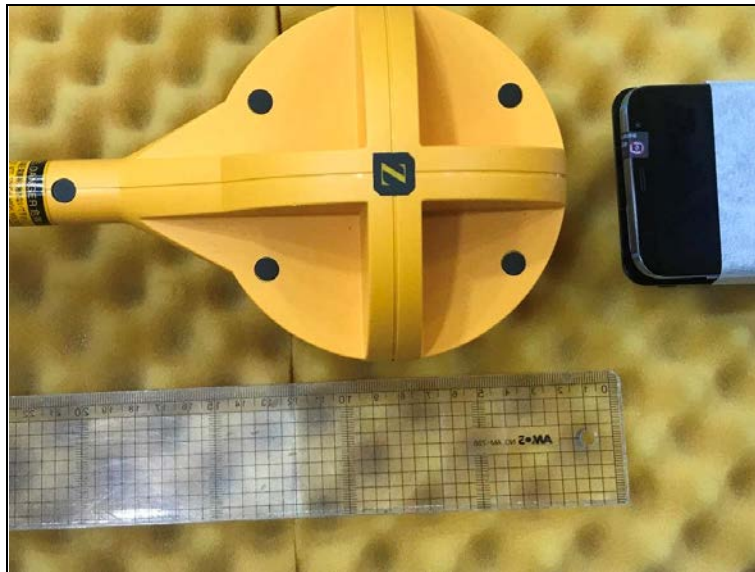
Position B



Position C



Position D



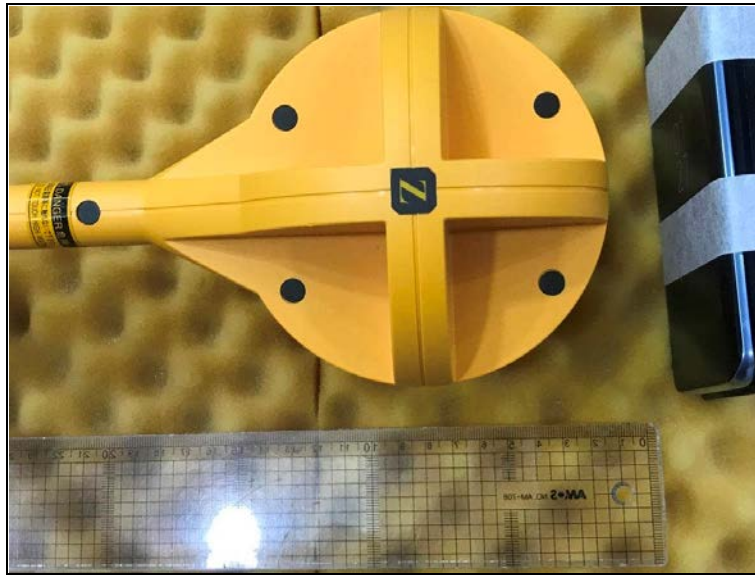
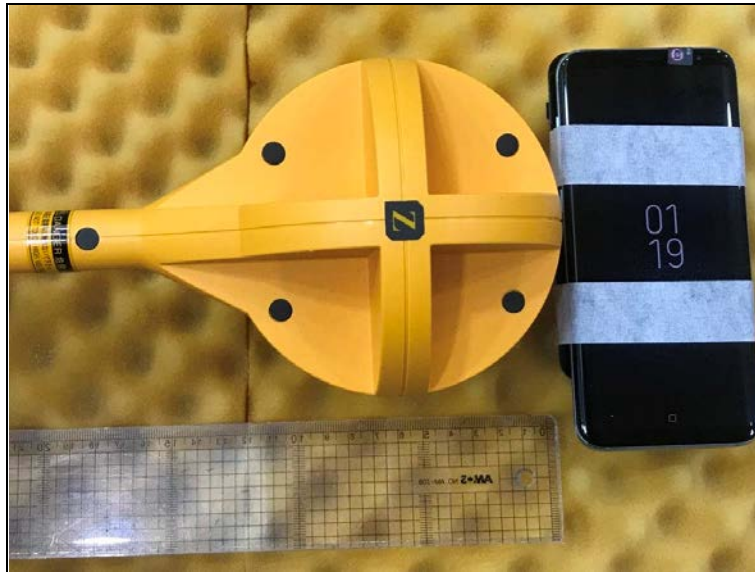
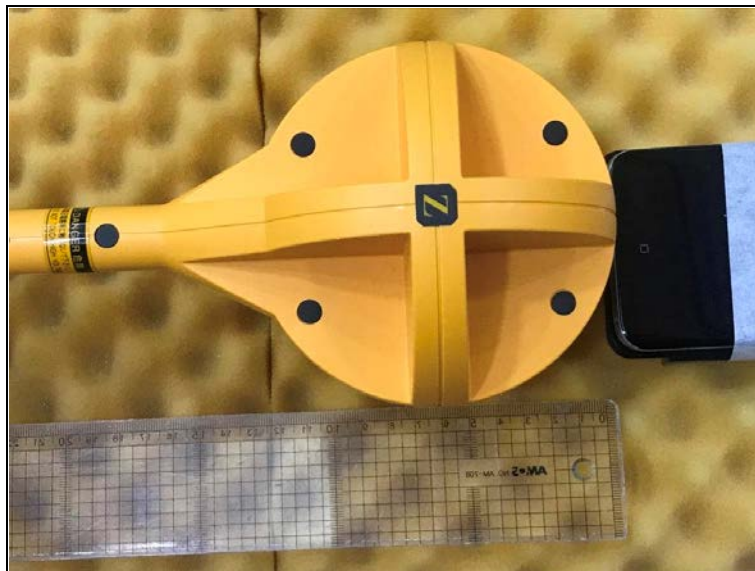


Photo of MPE Test Set up at 6 cm distance (B-field)

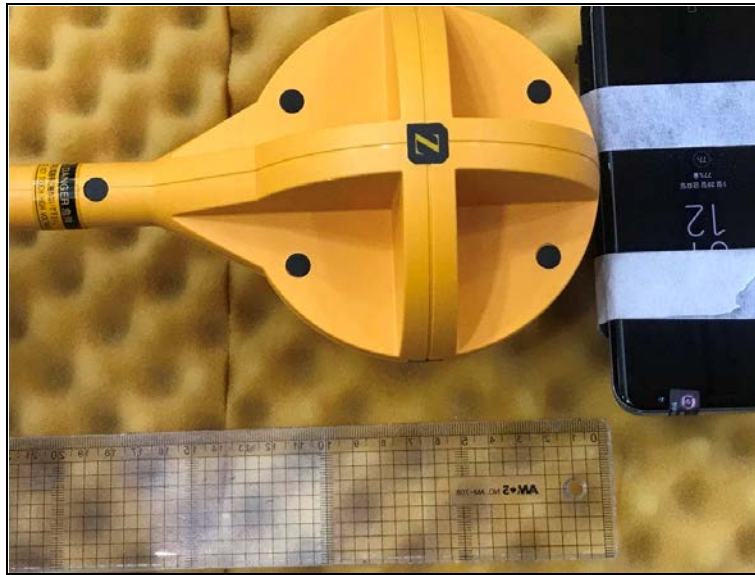
Position A



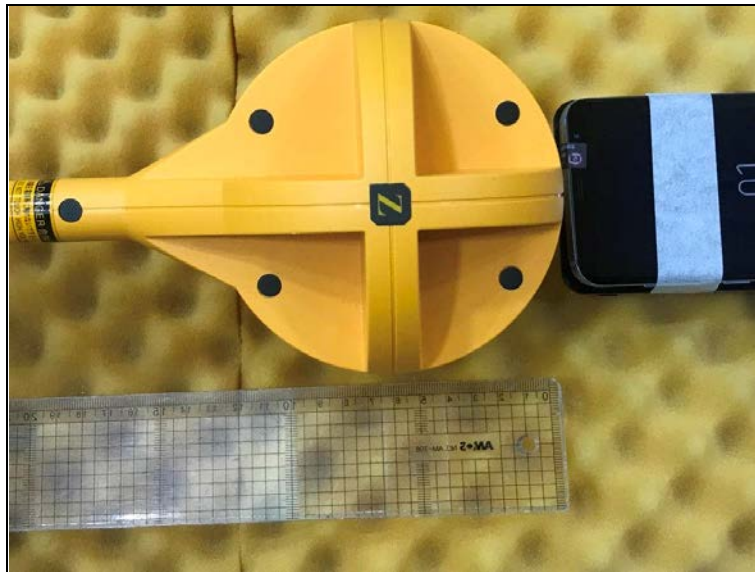
Position B



Position C



Position D



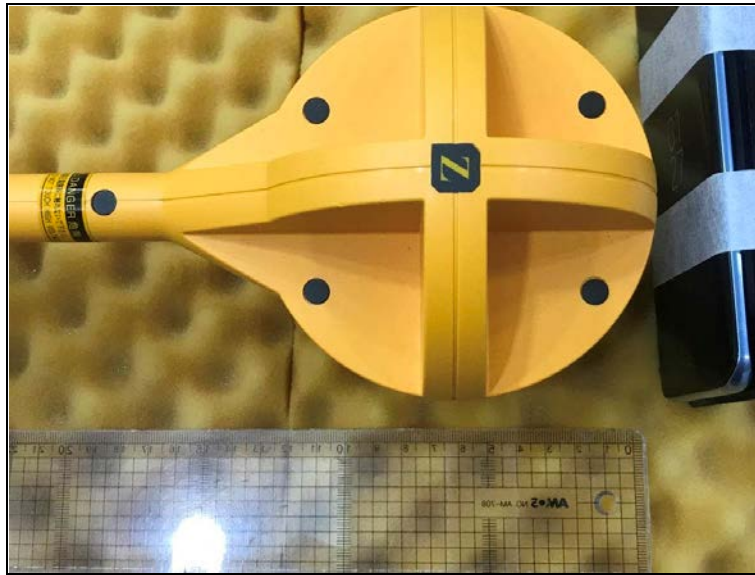
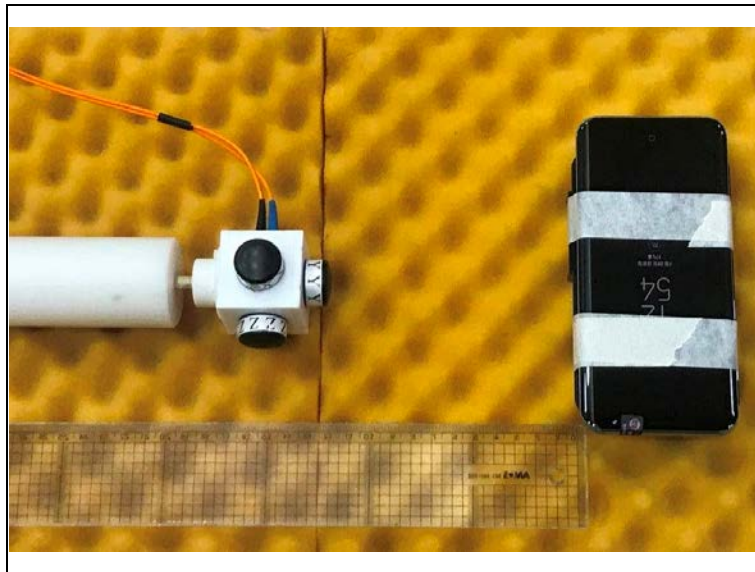
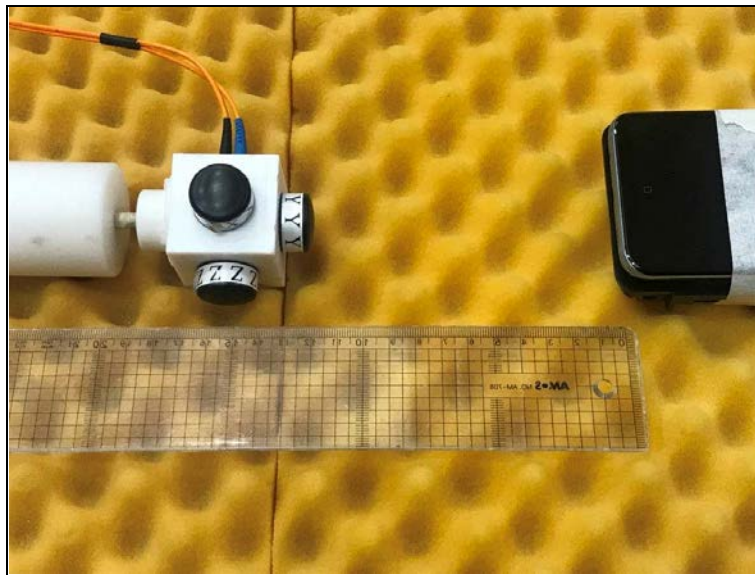


Photo of MPE Test Set up at 15 cm distance (E-field)

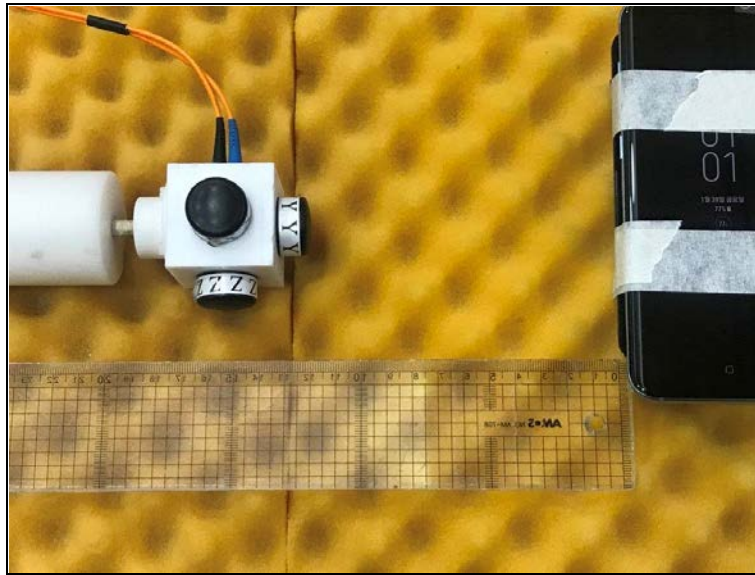
Position A



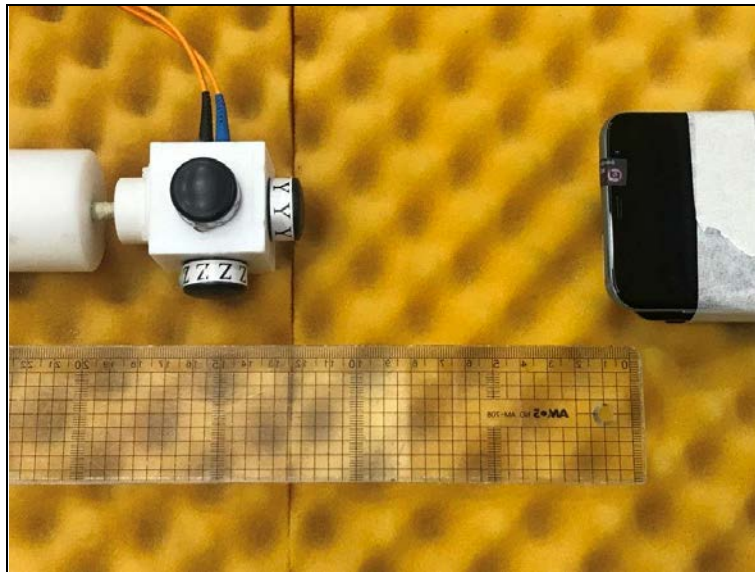
Position B



Position C



Position D



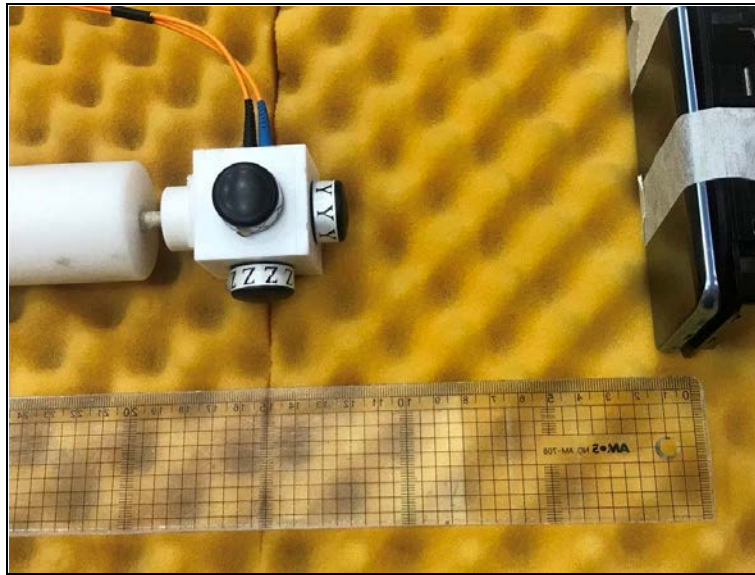
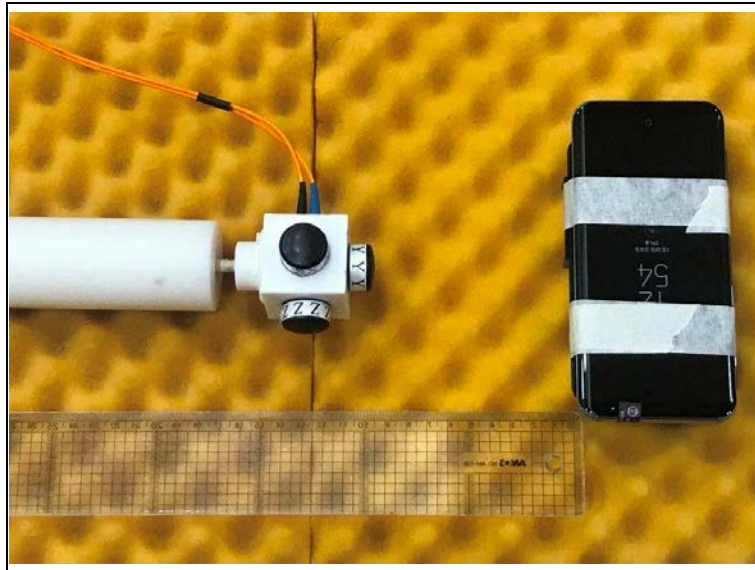


Photo of MPE Test Set up at 13 cm distance (E-field)

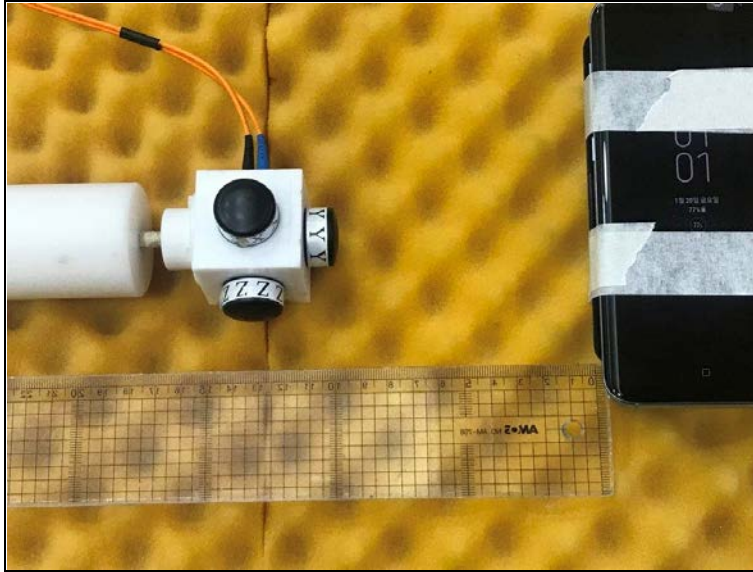
Position A



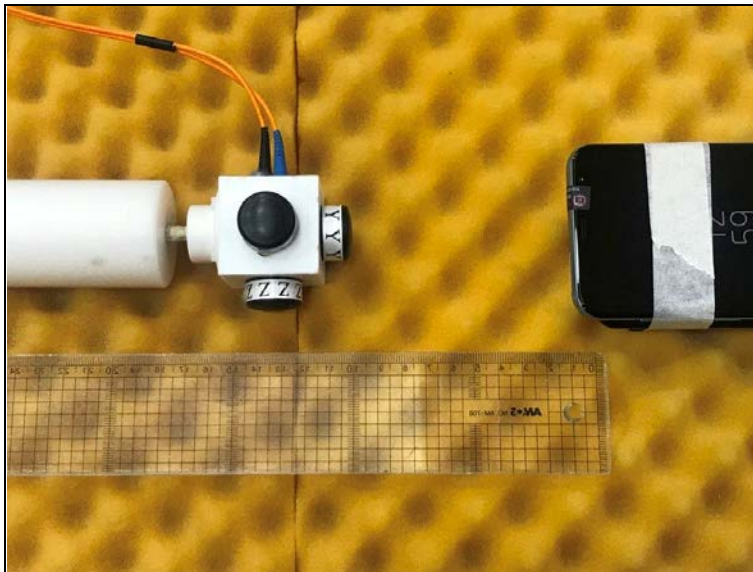
Position B



Position C



Position D



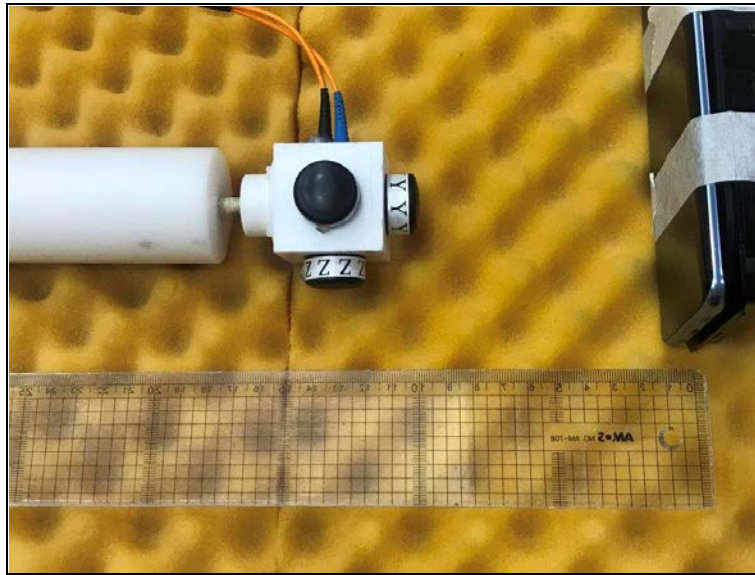
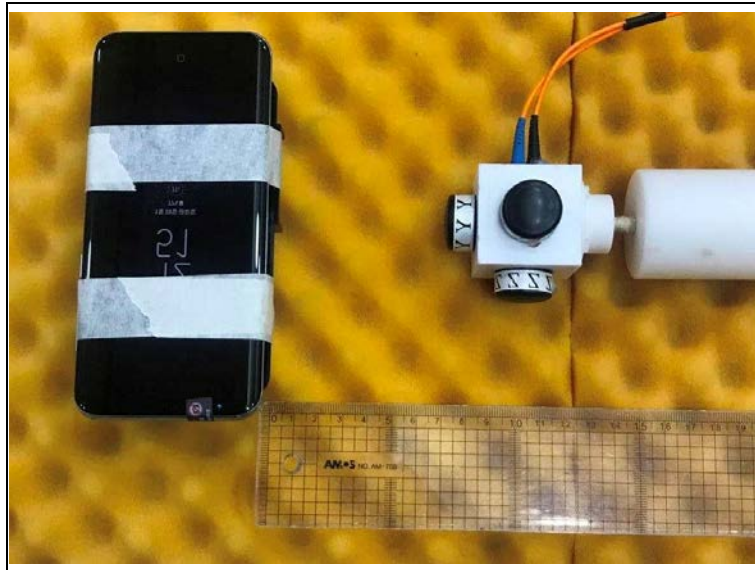
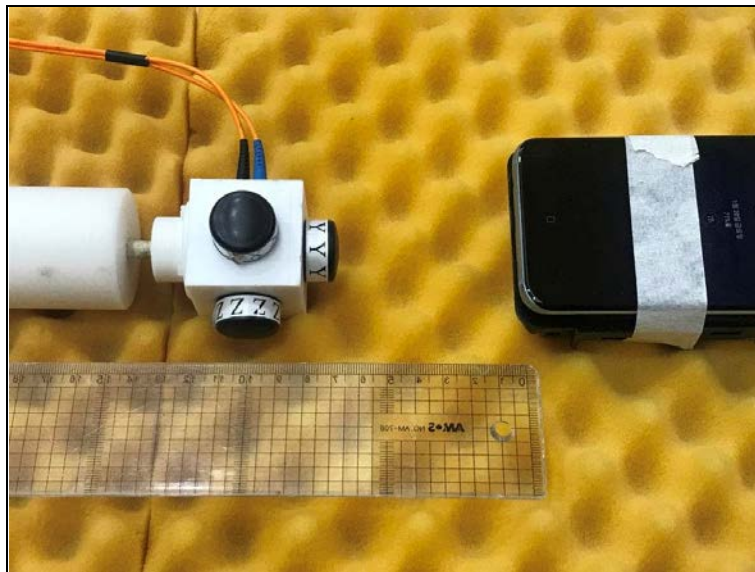


Photo of MPE Test Set up at 10 cm distance (E-field)

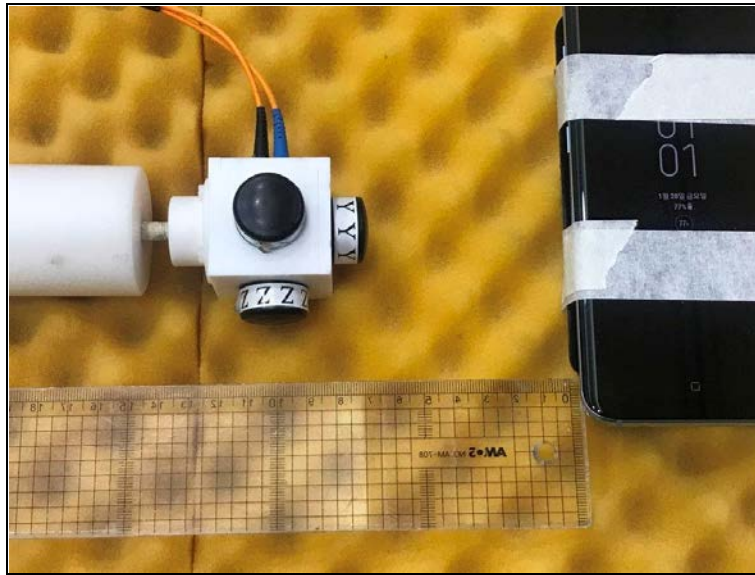
Position A



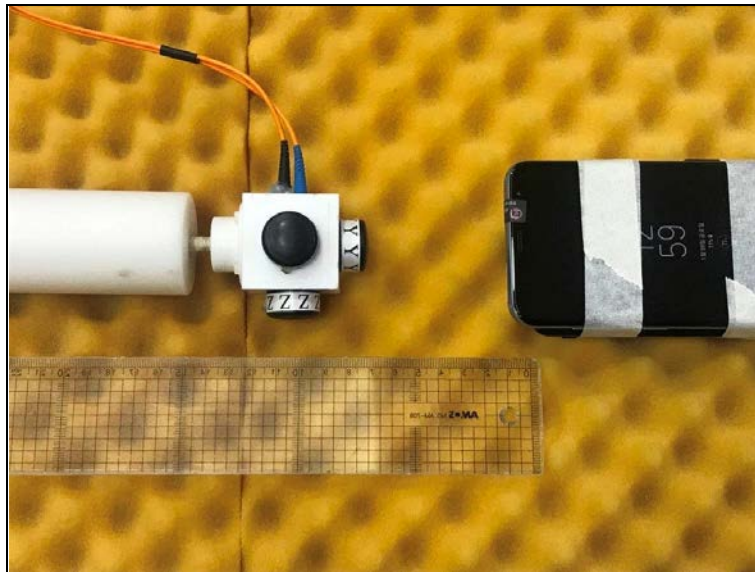
Position B



Position C



Position D



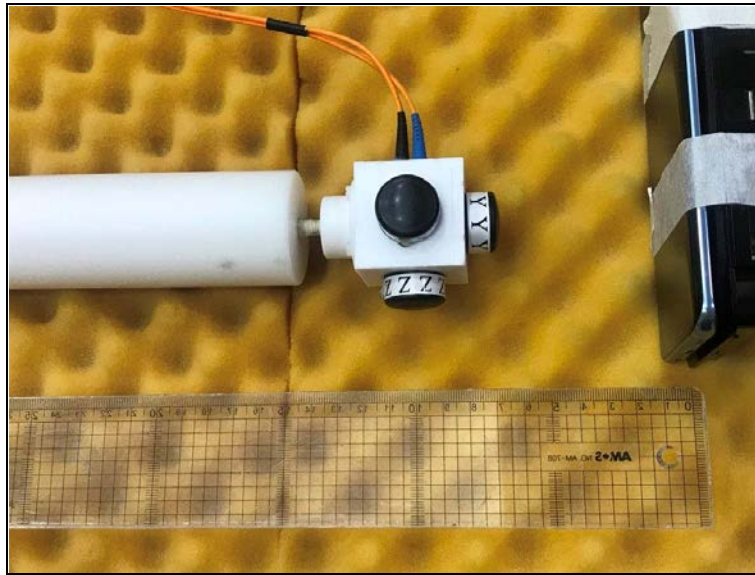
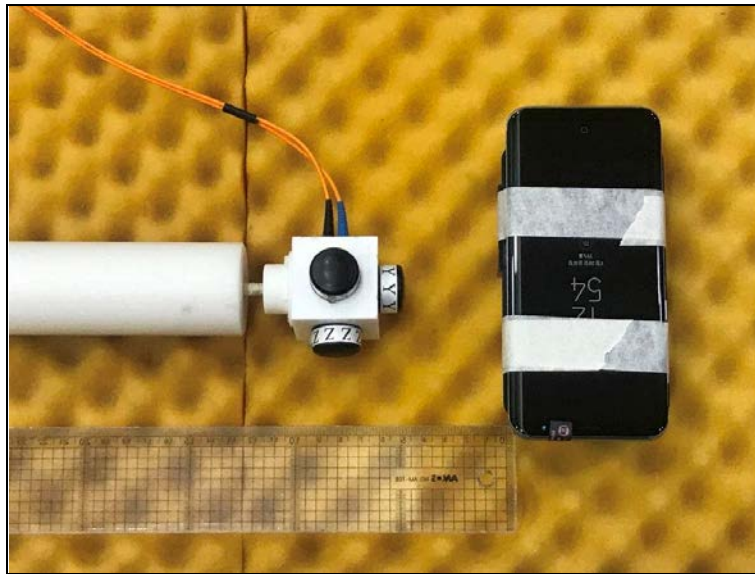
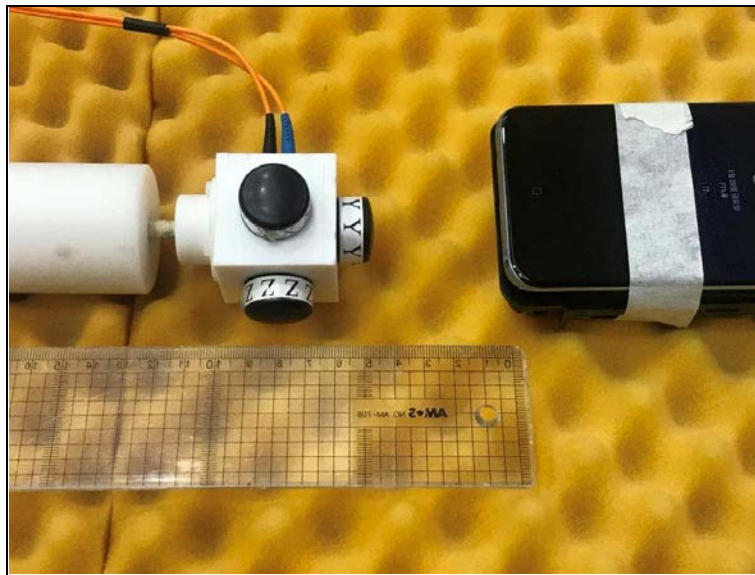


Photo of MPE Test Set up at 8 cm distance (E-field)

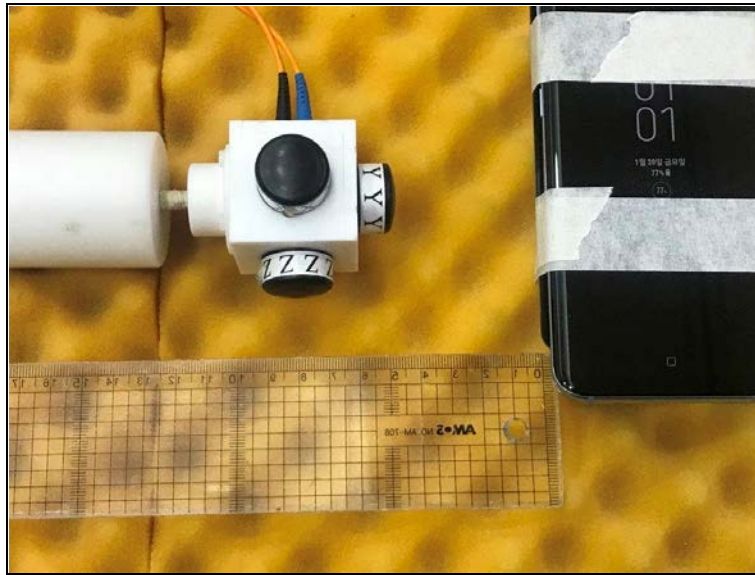
Position A



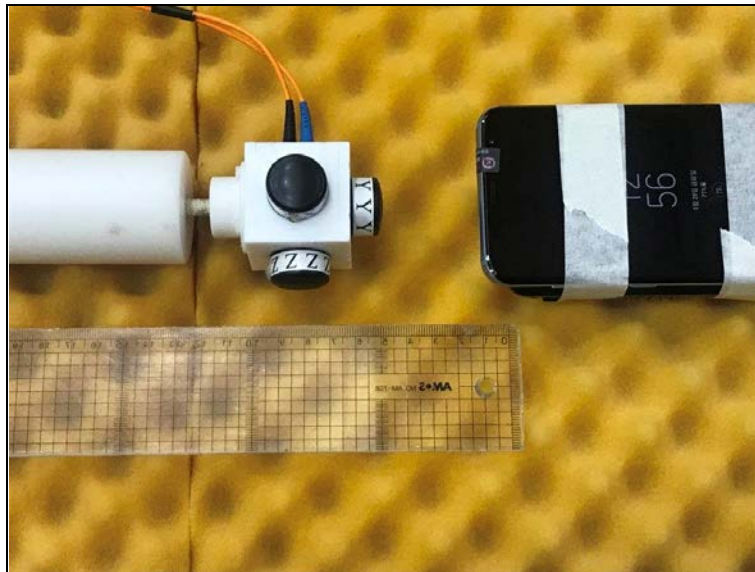
Position B



Position C



Position D



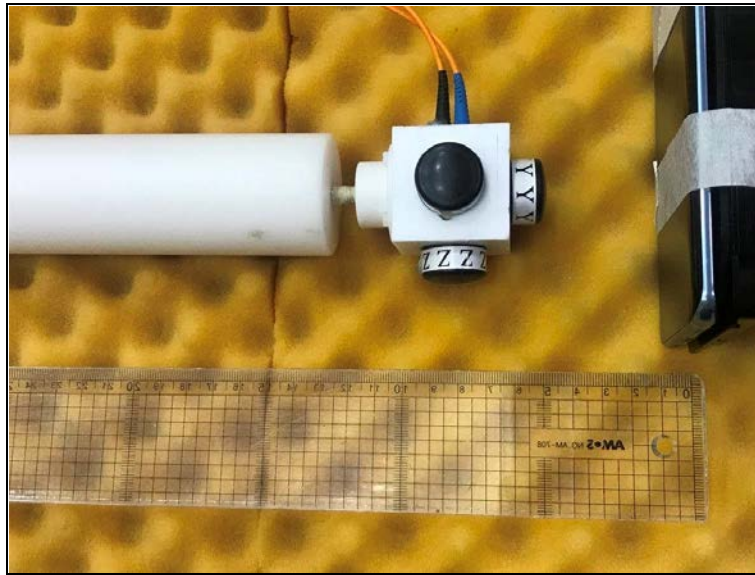
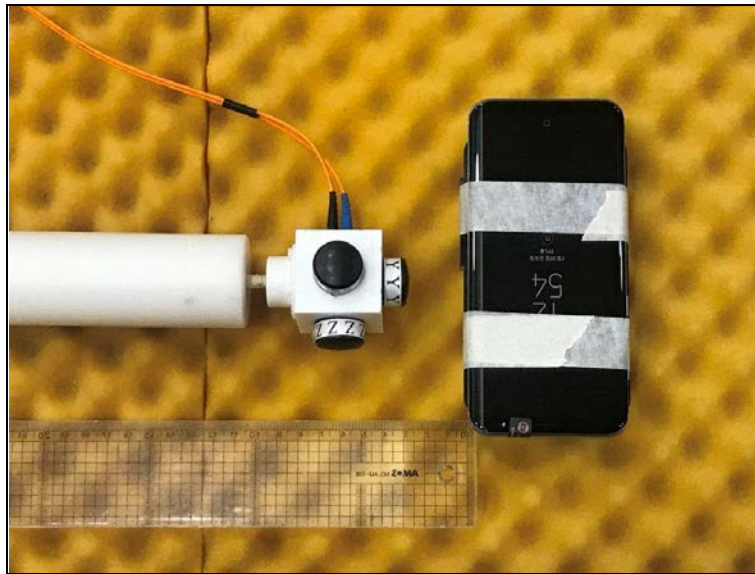
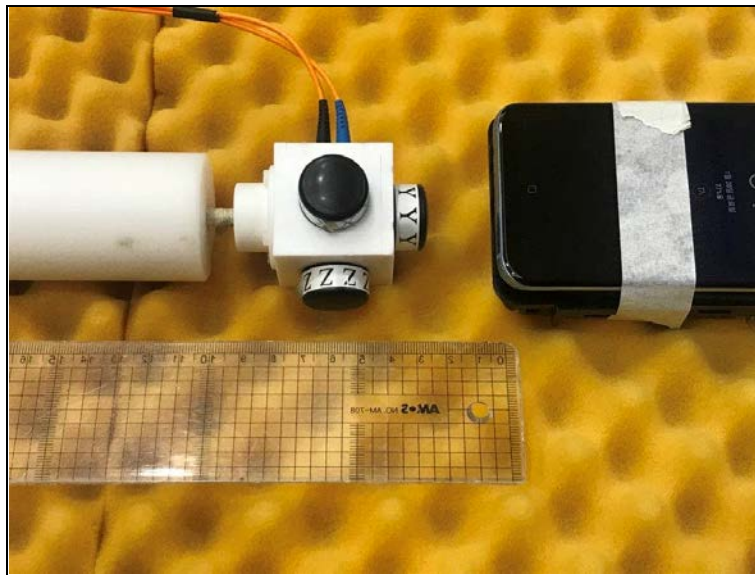


Photo of MPE Test Set up at 6 cm distance (E-field)

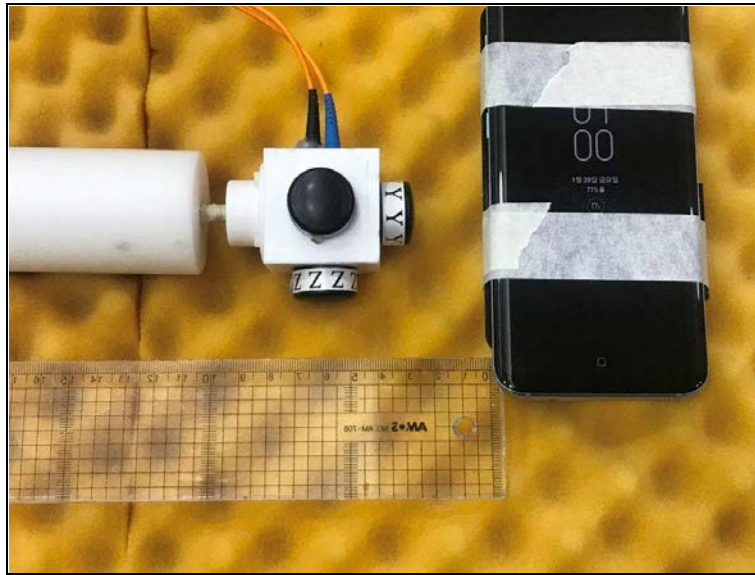
Position A



Position B



Position C



Position D

