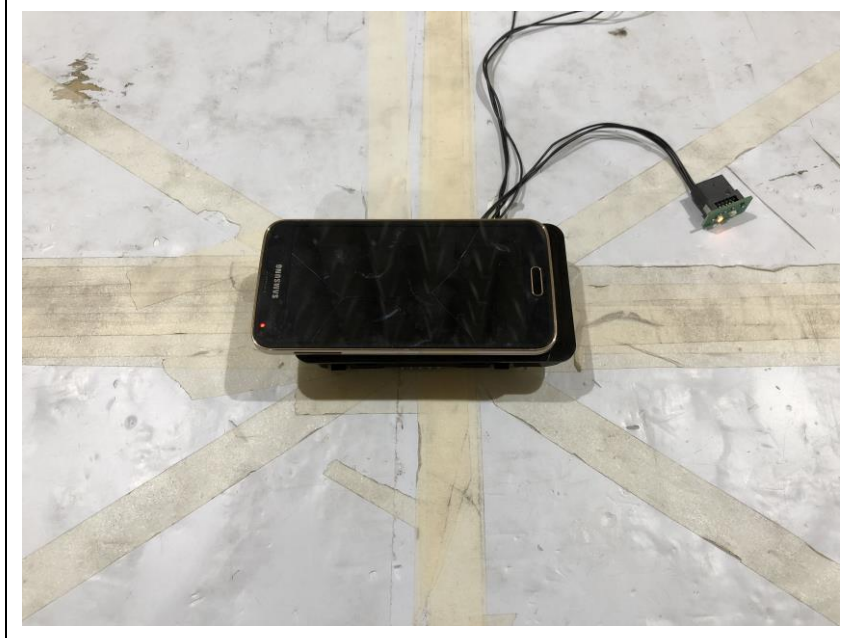


# Test setup photos of EUT

## Orthogonal plane of EUT

- The testing was set in the below orthogonal plane and measured.

### X-axis



## Photos of Radiated Spurious Emission Test (Below 1 GHz)

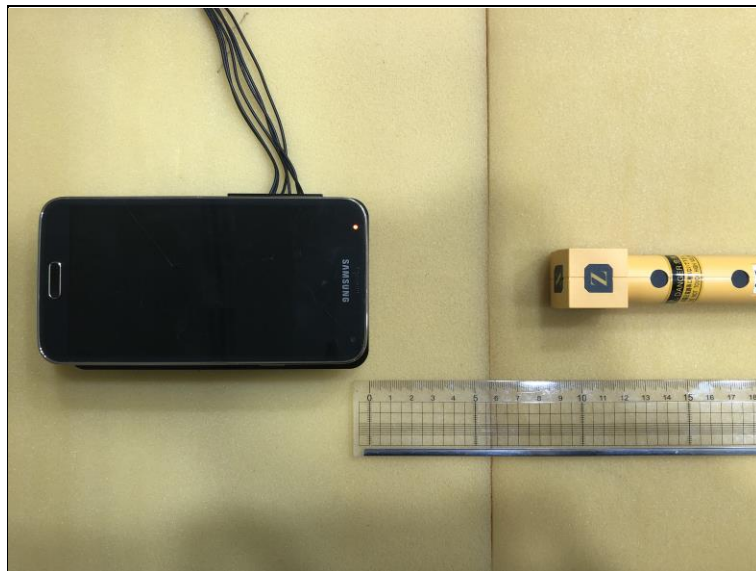


## Photo of MPE Test Set up at 10 cm distance (B-field)

### Position A



### Position B

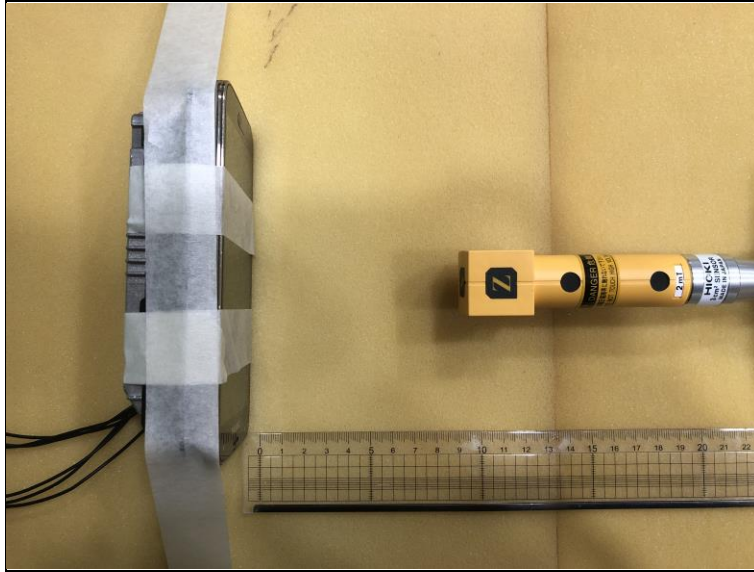


## Position C



## Position D







## Photo of MPE Test Set up at 8 cm distance (B-field)

### Position A



### Position B



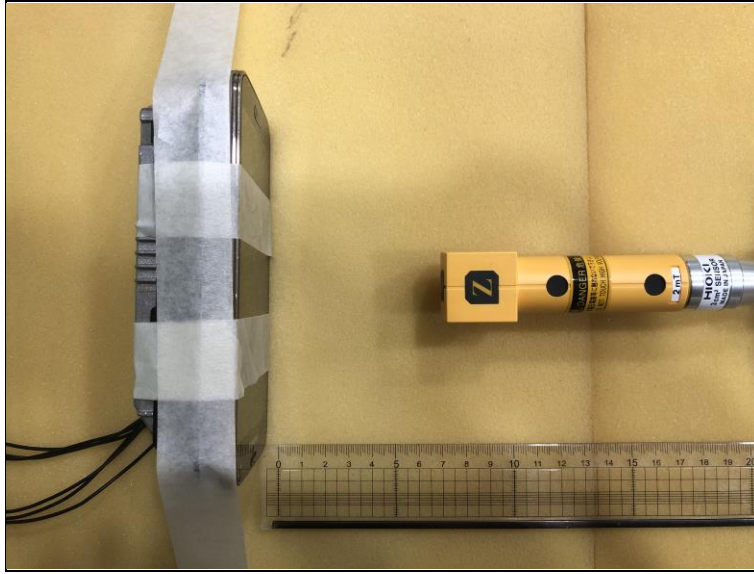
## Position C



## Position D





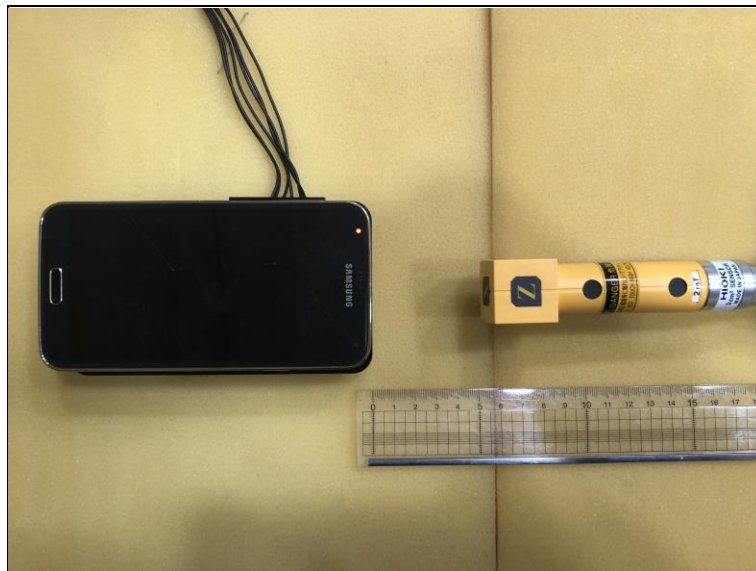


## Photo of MPE Test Set up at 6 cm distance (B-field)

### Position A



### Position B

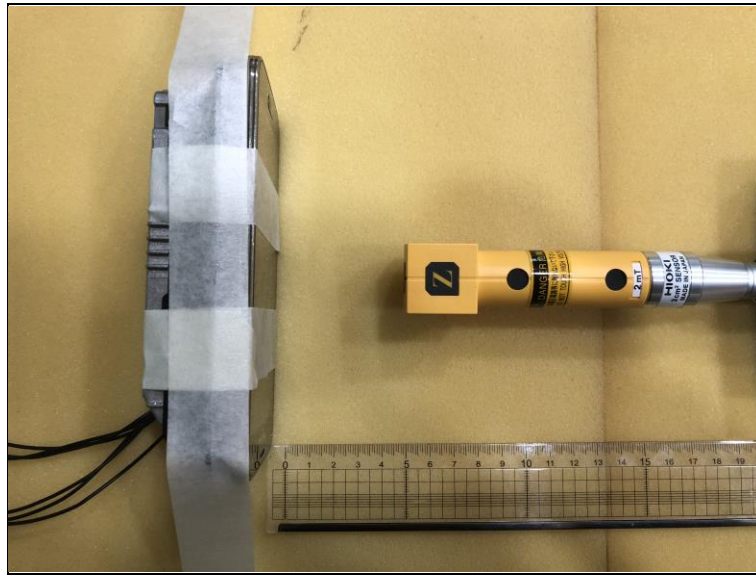


## Position C



## Position D





## Photo of MPE Test Set up at 4 cm distance (B-field)

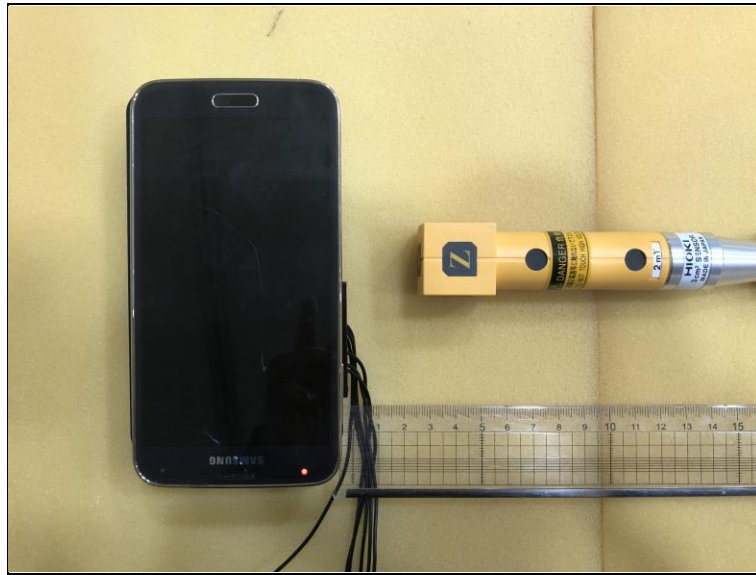
### Position A



### Position B



## Position C



## Position D

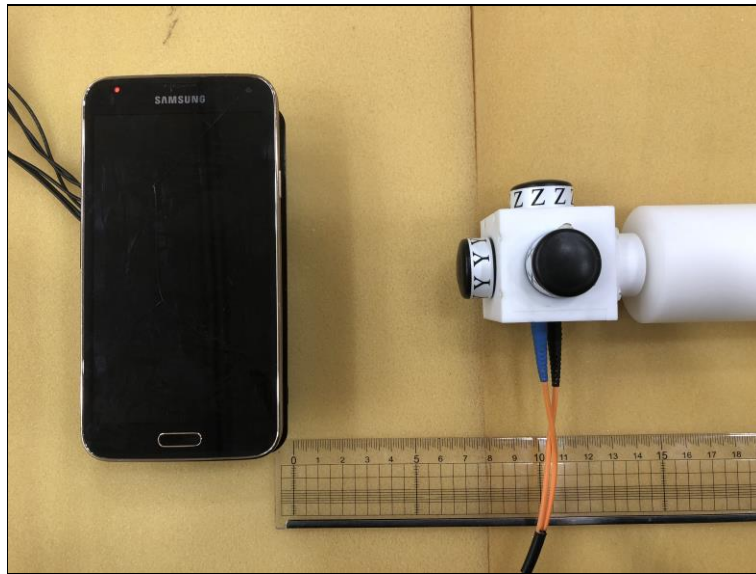




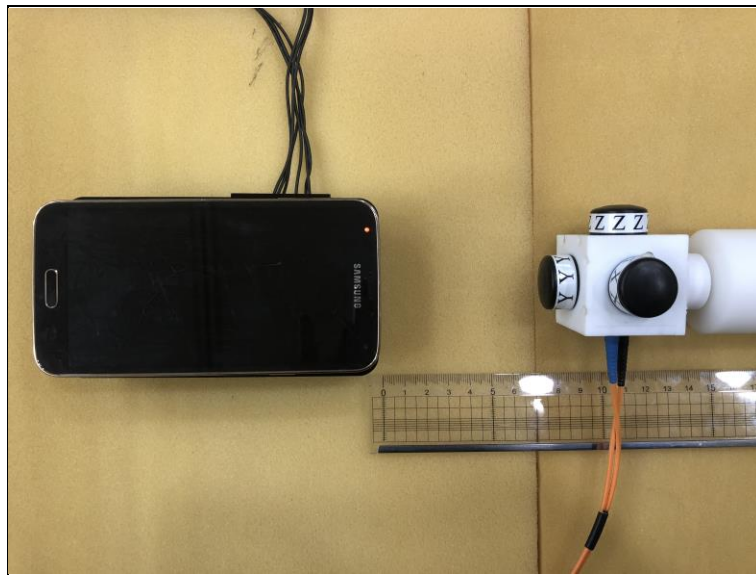


## Photo of MPE Test Set up at 10 cm distance (E-field)

### Position A



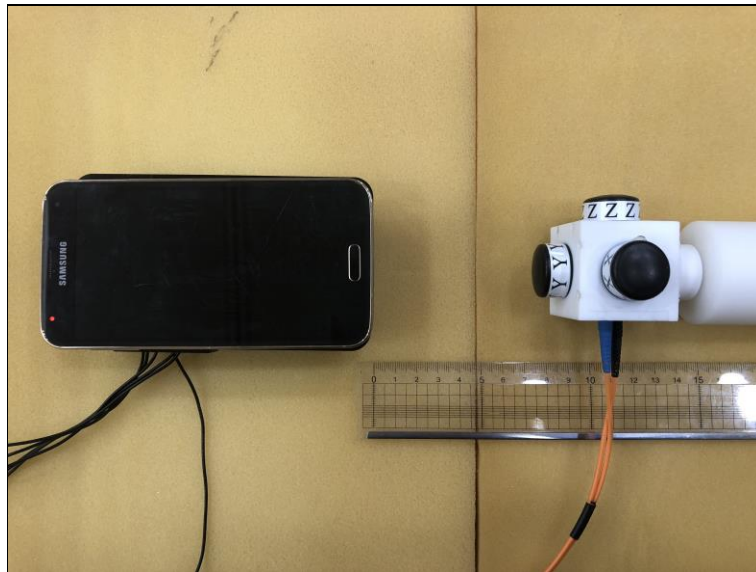
### Position B

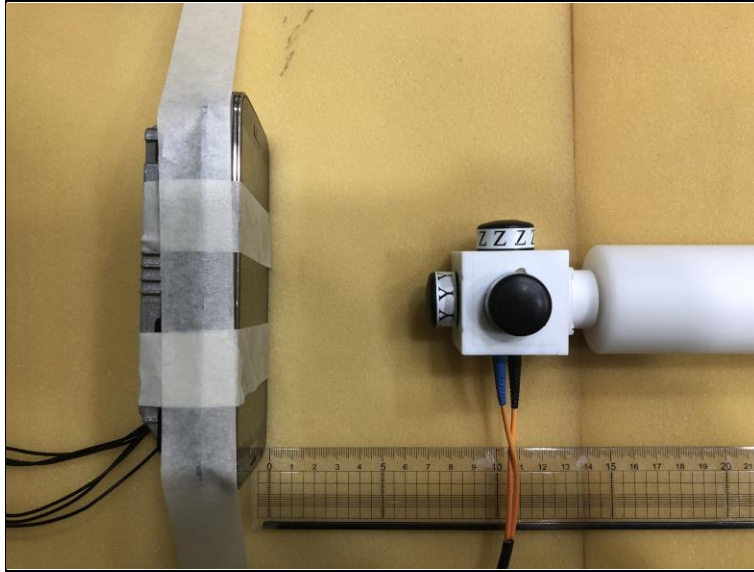


## Position C



## Position D



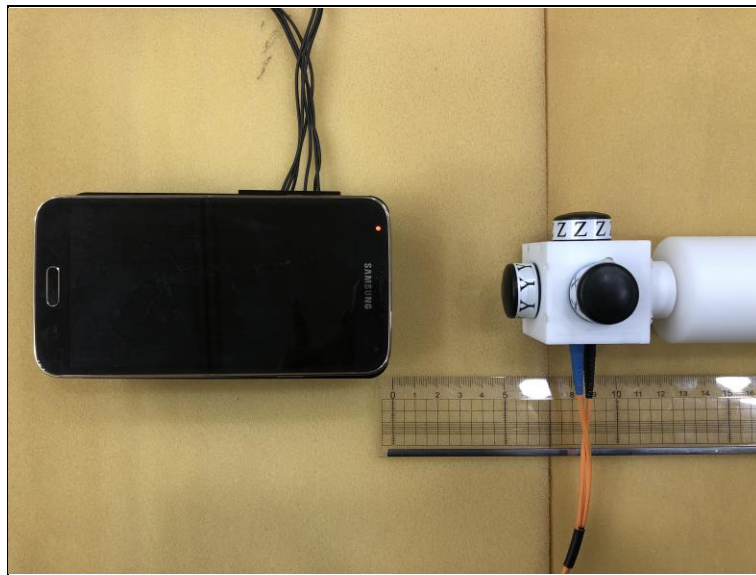


## Photo of MPE Test Set up at 8 cm distance (E-field)

### Position A

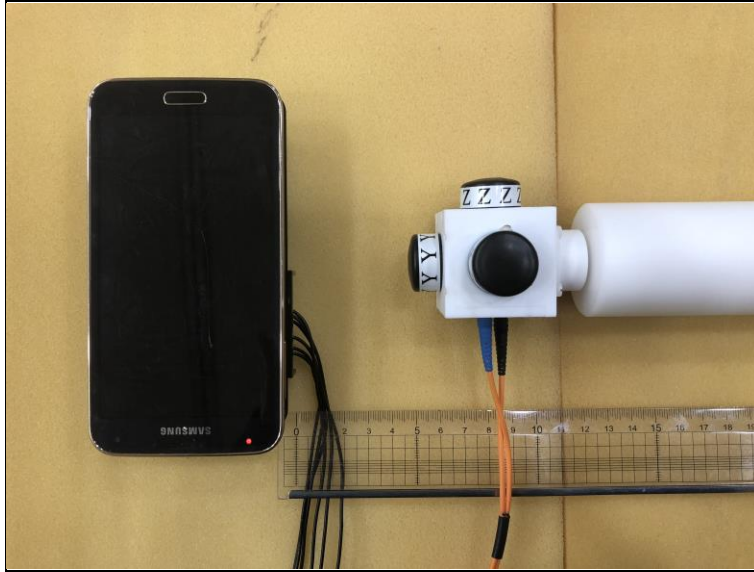


### Position B

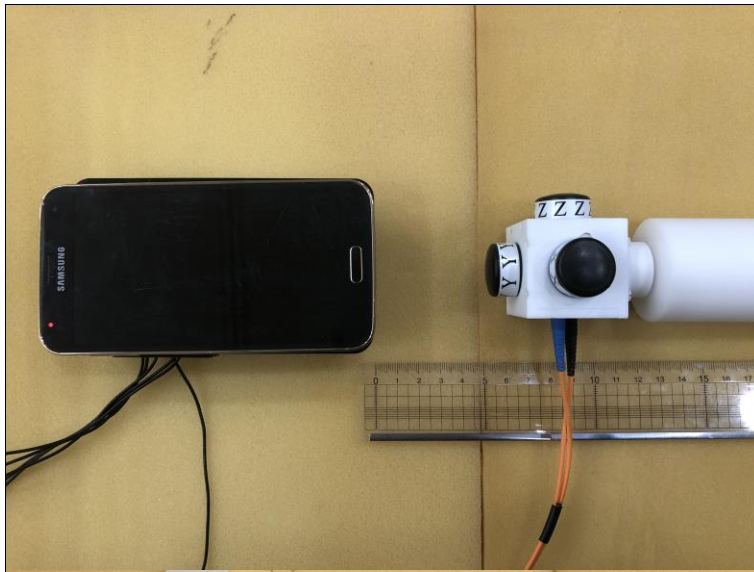




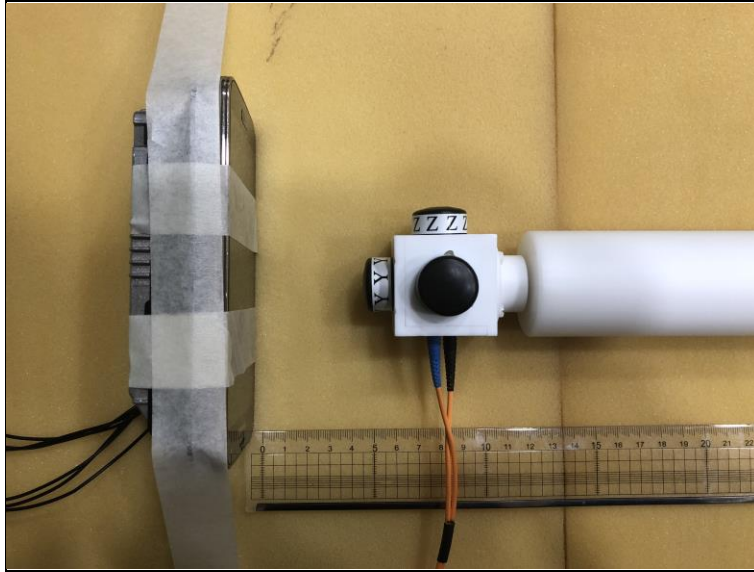
## Position C



## Position D

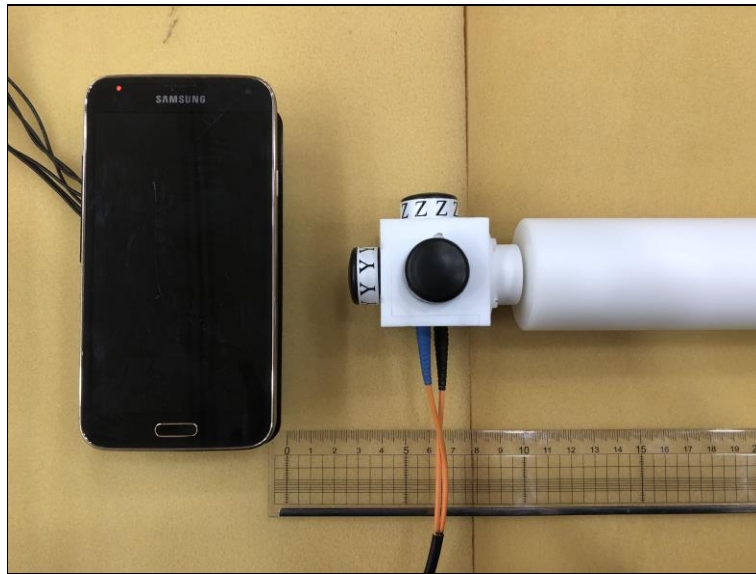




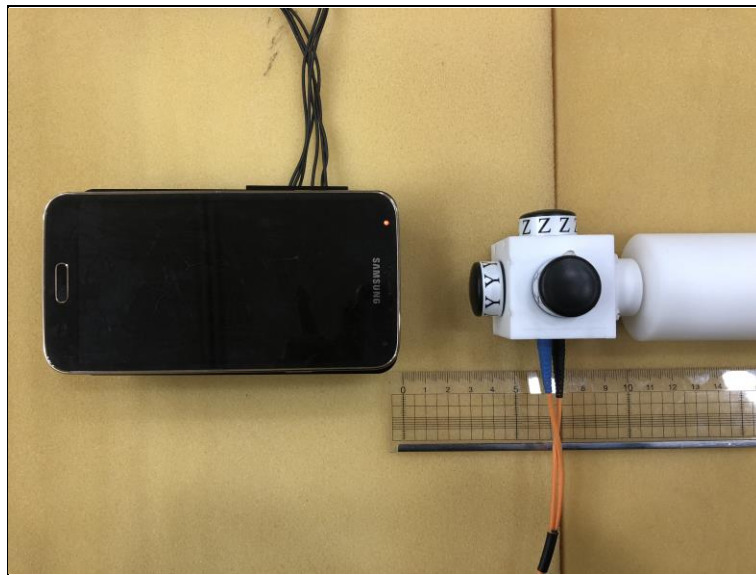


## Photo of MPE Test Set up at 6 cm distance (E-field)

Position A



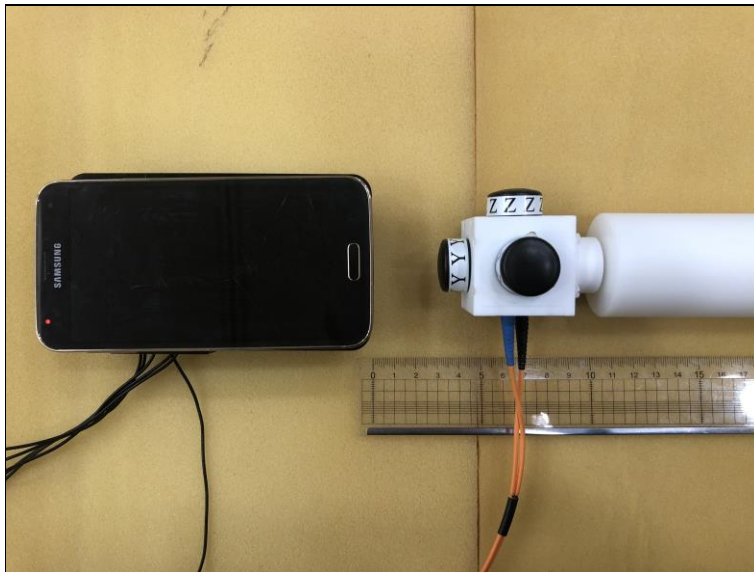
Position B

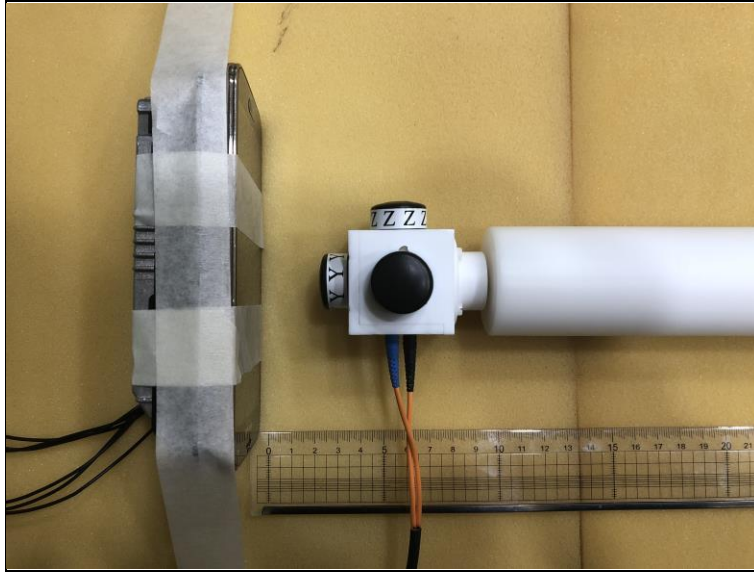


## Position C



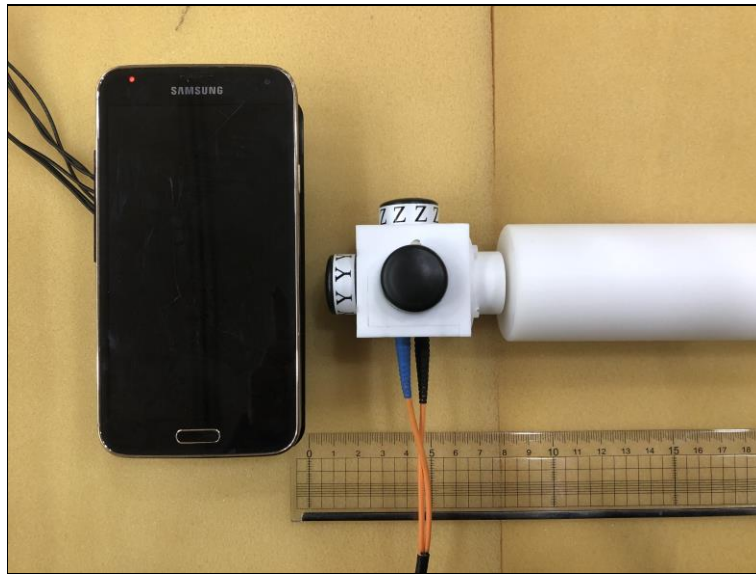
## Position D



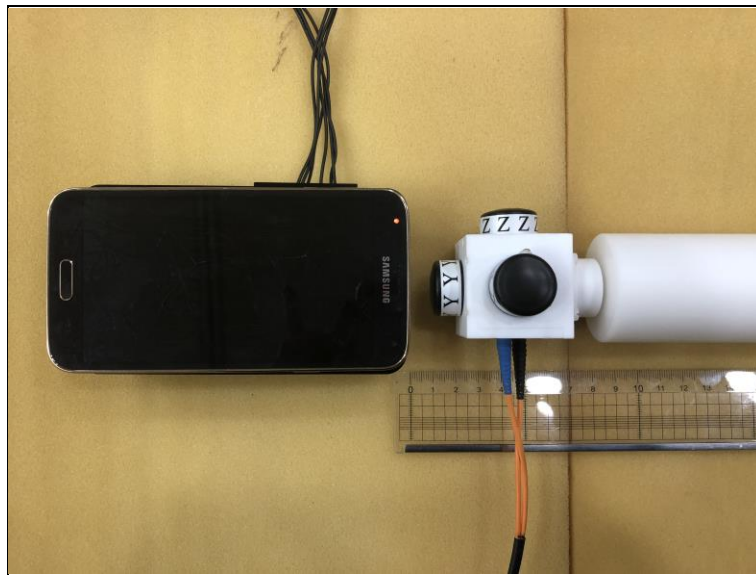


## Photo of MPE Test Set up at 4 cm distance (E-field)

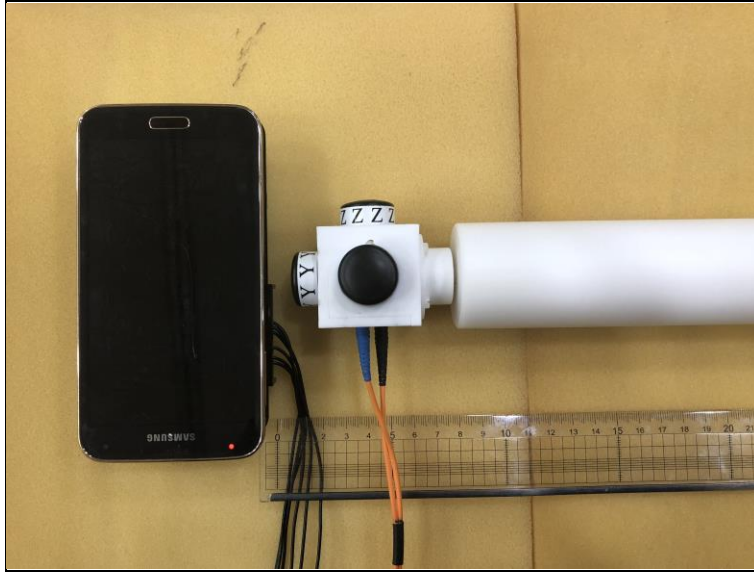
Position A



Position B



Position C



Position D

