

beyerdynamic

DESIGN DOCUMENTATION

MMX200 BLACK & GREY



In this document you can find preliminary information concerning the color, material and finishing. Images are reference only.

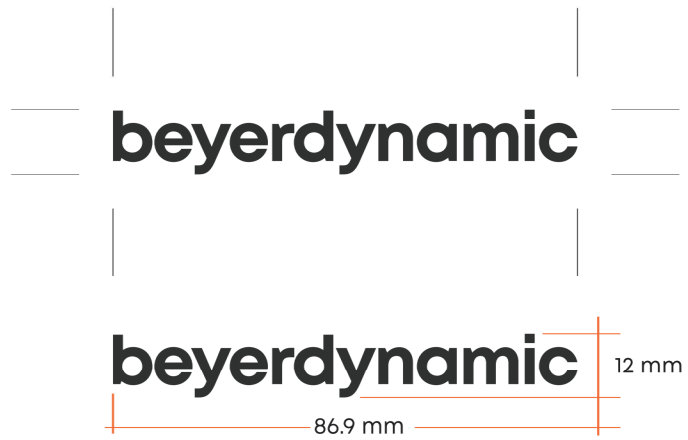
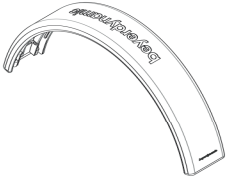
March 31st 2023

beyerdynamic

Date	Version	Project	Design	Page
31 / 03 / 2022	V06	MMX 200 BLACK & GREY	NA EP	16

HEADBAND | PLACEMENT OVERVIEW

Debossed logo



beyerdynamic

Strictly confidential

Date

Version

Project

Design

Page

31 / 03 / 2022

V06

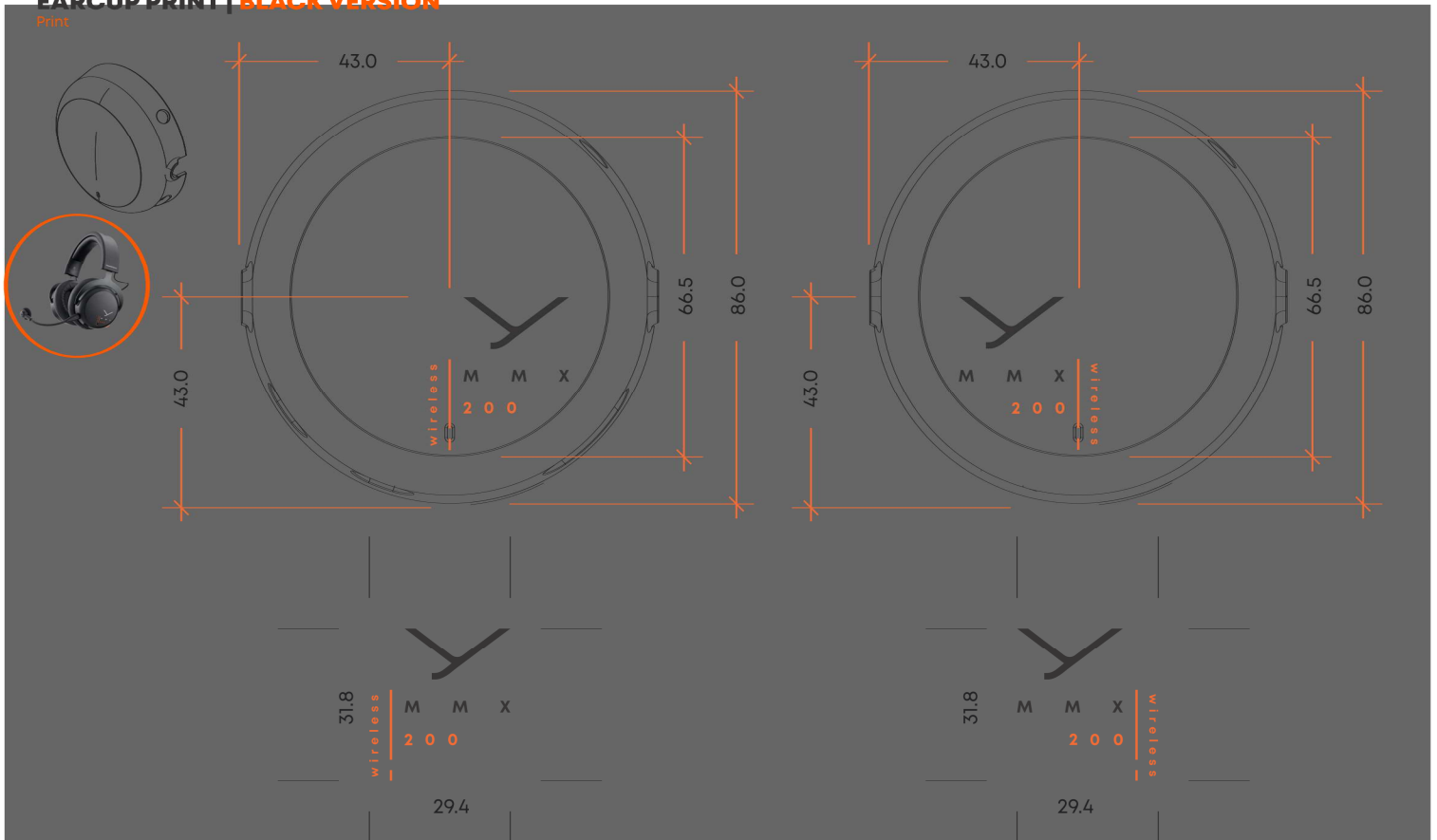
MMX 200 | BLACK & GREY

NA EP

19

EARCUP PRINT | BLACK VERSION

Print



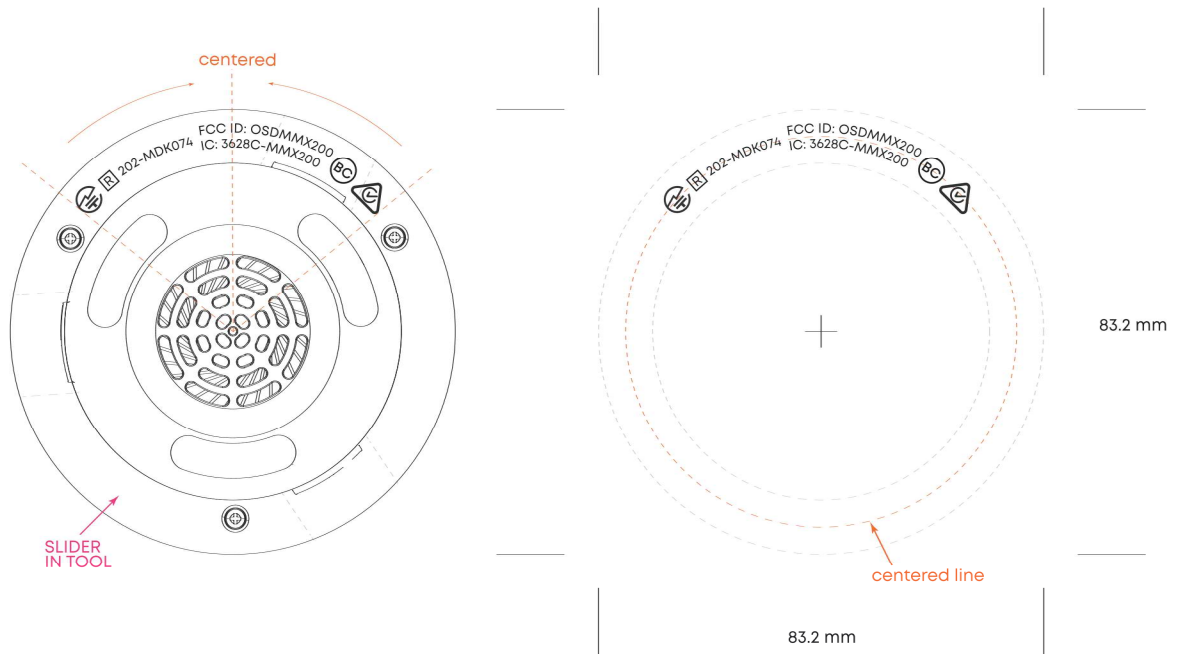
Pantone Cool Gray 8 U, Pantone Orange 021 C

Pantone Cool Gray 8 U, Pantone Orange 021 C

Date	Version	Project	Design	Page
31 / 03 / 2022	V06	MMX 200 BLACK & GREY	NA EP	23

EARCUP LEFT (BAFFLE)

Laser



Date

Version

Project

Design

Page

31 / 03 / 2022

V06

MMX 200 | BLACK & GREY

NA EP

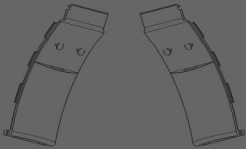
24

INNER HEADBAND END CAPS (L AND R)

Debossed

Black: Pantone Cool Gray 8 U, S/N laser printed

Gray: Pantone Black U, S/N laser printed



centered position



21 mm

30 mm

Debossed



centered position



17.9 mm

26.6 mm

Debossed

Date	Version	Project	Design	Page
31 / 03 / 2022	V06	MMX 200 BLACK & GREY	NA EP	25

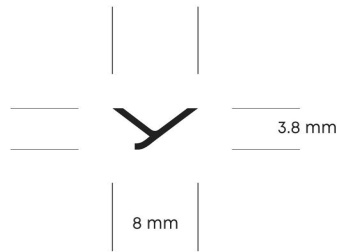
USB DONGLE

Print & debossing & lasering

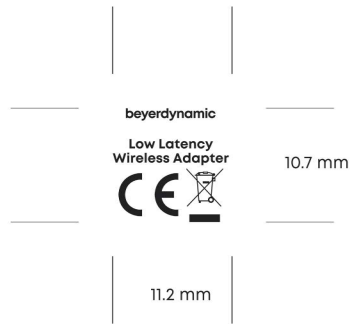
Branding ,Y': debossed in tooling

Compliance print: Transparent, high-glossy

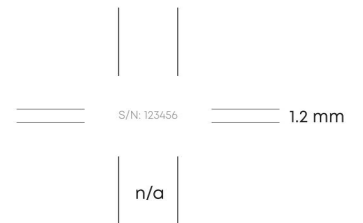
S/N: Lasered



Debossed in tooling



Print



Lasered

Date	Version	Project	Design	Page
31 / 03 / 2022	V06	MMX 200 BLACK & GREY	NA EP	26

CABLE FLAG

Printed synthetic paper

Material: 50# synthetic paper,
two color printing
over matte film
(Refer to BB2 cable flag)



Position cable flag centered
between headband & earcup

