

Operation

1. Put the detector at place where you want, within the flood sensor detection range when where is leaking all over the place, and both the two probes detect water at the same time, the sensor will be triggered and send signal to your receiver.
2. Normal operation, the LED will not light.
3. If the cover of sensor is removed, the tamper switch will send signal according the Status/Signal table, and the LED will go flash once.

Federal Communications Commission Statement

This equipment has been followed to comply with the limits for a Class B digital device, pursuant to Part 15 of the FCC Rules. These limits are designed to provide reasonable protection against harmful interference in a residential installation. This equipment generates, uses and can radiate radio frequency energy and, if not installed and used in accordance with the instruction, may cause harmful interference to radio communications. However, there is no guarantee that interference will not occur in a particular installation. If this equipment does cause harmful interference to radio or television reception, which can be determined by turning the equipment off and on, the user is encouraged to try and correct the interference by one of the following measures:

- Reorient or relocate the receiving antenna,
- Increase the separation between the equipment and receiver,
- Connect the equipment into and outlet on a circuit different from that to which the receiver is connected.
- Consult the dealer or an experienced radio/TV technician for help.

This device complies with Part 15 of the FCC Rules. Operation is subject to the following two conditions: (1) this device may not cause harmful interference, and (2) this device must accept any interference received, including interference that may cause undersired operation.

FCC Caution: Any changes or modifications not expressly approved by the party responsible for compliance could void the user's authority to operate this equipment.

Limited Warranty

OPLINK Guarantees that every flood sensor is free from physical defects in material and workmanship under normal use for one year from the date of purchase. If the product proves defective during this one-year warranty period, OPLINK will replace it free of charge. OPLINK does not issue any refunds. This warranty is extended to the original end user purchase only and is not transferable. This warranty does not apply to : (1) damage to units caused by accident, dropping or abuse in handling, or any negligent use; (2) units which have been subject to unauthorized repair, taken apart, or otherwise modified; (3) units not used in accordance with instruction; (4) damages exceeding the cost of the product; (5) transit damage, initial installation costs, removal cost, or reinstallation cost. For information on additional devices, please visit us at www.oplink.com



Installation & Operation Manual

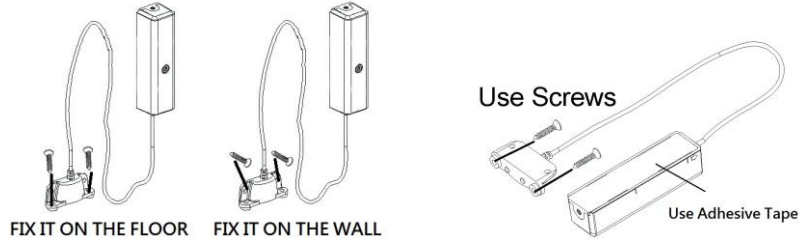
WLS1300

Water Leak Sensor (Flood Sensor)

Introduction

Thanks for choosing the OPLINK flood sensor of the home security device. This sensor sends signal when it detects water. We can put it under the refrigerator, and the sensor will triggered when the refrigerator leaking and both the two probes of detector detect water at the same time. You can also set the detector at anywhere leaks; with this sensor you can avoid loss before the calamity and the flood.

Product Description and Specification



| Specification: | Package Content: |
|---|--------------------------------------|
| Frequency: 433.92MHz | 1pc WLS1300 sensor |
| Operating Range: Up to 100 feet line of sight | 1pc CR123A Battery |
| Operating Temp.: -15°C~ 60°C (5°F ~140°F) | 1pcs Installation & Operation manual |
| | 2pc Adhesive tape for main unit |
| | 2pc Screws for bracket of main unit |
| | 2pc Screws for sensor |

Status/ Signal (Alarm report)

| Alarm Type | | |
|------------|--------------------|---------------------|
| | Water Leak Alarm | 1111 0010 1001 000X |
| | Water Leak Release | 1111 0010 1010 000X |
| | Temper Alarm | 1111 0010 1001 010X |
| | Low Battery Alarm | 1111 0010 1001 001X |
| | Heart Beat | 1111 0010 1001 011X |

Installation

1. Fix the detector on position you want, using the screws to fix it on the wall or floor.
2. Unscrew the screw fastening the rear cover and slide the rear cover down and Insert a CR123A battery into the battery compartment and LED will start to flashing, which means the sensor has send alarm report signal.
3. Slide back the rear cover and screw fastening with the front cover, the LED should go off.
4. Put the main part at higher place for better RF range, and then use the adhesive tape to fix the main part on the wall.