



LONG BATTERY LIFE SINGLE STATION BATTERY POWERED PHOTOELECTRIC SMOKE & HEAT ALARM SD360 SERIES USER'S MANUAL

INTRODUCTION

Everday's single station photoelectric smoke detector SD360 series is designed to sense smoke that comes into the alarm chamber. It does not sense gas, or flame. This smoke alarm is designed to give early warning of developing fires by giving off the alarm sounds from its built-in alarm horn. It can provide precious time for you and your family to escape before a fire spreads. However, the smoke alarm makes such pre-warning of fire accident possible, only if the smoke alarm is located, installed, and maintained properly as described in this User's Manual.

WARNING: This smoke alarm is designed for use in a single residential unit only, which means that it should be used inside a single family home or apartment. It is not meant to be used in lobbies, hallways, basements, or another apartment in multi-family buildings, unless there are already working alarms in each family unit. Smoke alarms, placed in common areas outside of the individual living unit, such as on porches or in hallways, may not provide early warning to residents. In multi-family buildings, each family living unit should set up its own smoke alarms.

WARNING: This alarm is not meant to be used in non-residential buildings. Warehouses, industrial or commercial buildings, and special purpose non-residential buildings require special fire detection and alarm systems. This smoke alarm alone is not a suitable substitute for complete fire detection systems for places where many people live or work, such as hotels or motels. The same is true of dormitories, hospitals, nursing homes or group homes of any kind, even if they were once single family homes. Please refer NFPA 101, the Life Safety Code, NFPA 72A for smoke alarm requirements for fire protection in buildings not defined as "households".

WARNING: This smoke alarm will not alert people who are hard of hearing. It is strongly recommended that the special-purpose smoke alarms, using lights or vibrating devices, should be installed to alert occupants who are hard of hearing.

LOCATIONS TO INSTALL YOUR SMOKE ALARM

Smoke alarms should be installed in accordance with the NFPA Standard 72 (National Fire Protection Association, Battery march Park, Quincy, MA 02169). For complete coverage in residential units, smoke alarms should be installed in all rooms, halls, storage areas, basements, and attics in each family living unit. Minimum coverage is one alarm on each floor and one in each sleeping area.

Here, we have useful tips for you:

- Install a smoke alarm in the hallway outside every separate bedroom area, as shown in Figure 1. Two alarms are required in homes with two bedroom areas, as shown in Figure 2.
- Install a smoke alarm on every floor of a multi-floor home or apartment, as shown in Figure 3.
- Install a minimum of two alarms in any household.
- Install a smoke alarm inside every bedroom.
- Install smoke alarms at both ends of a bedroom hallway if the hallway is more than 40 feet (12 meters) long.
- Install a smoke alarm inside every room where one sleeps with the door partly or completely closed, since smoke could be blocked by the closed door and a hallway alarm may not wake up the sleeper if the door is closed.

Figure 1: LOCATIONS FOR PLACING SMOKE ALARMS FOR SINGLE RESIDENCE WITH ONLY ONE SLEEPING AREA

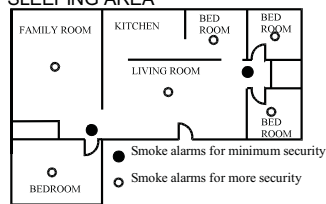


Figure 2: LOCATIONS FOR PLACING SMOKE ALARMS FOR SINGLE-FLOOR RESIDENCE WITH MORE THAN ONE SLEEPING AREA

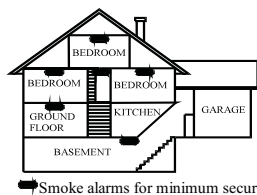
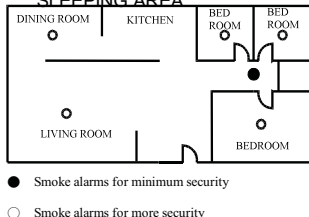


Figure 3: LOCATION FOR PLACING SMOKE ALARMS FOR A MULTI-FLOOR RESIDENCE

- Install basement alarms at the bottom of the basement stairwell.
- Install second-floor alarms at the top of the first-to-second floor stairwell.

Be sure no door or other obstruction blocks the path of smoke to the alarm.

- Install additional alarms in your living room, dining room, family room, attic, utility and storage rooms.
- Install smoke alarms as close to the center of the ceiling as possible. If this is not practical, put the alarm on the ceiling, no closer than 4 inches (10 cm) from any wall or corner, as shown in Figure 4.
- If ceiling mounting is not possible and wall mounting is permitted by your local and state codes, put wall-mounted alarms between 4 and 6 inches (10 ~ 15 cm) from the ceiling, also see Figure 4.
- If some of your rooms have sloped, peaked, or gabled ceilings, try to mount alarms 3 feet (0.9 meter) measured horizontally from the highest point of the ceiling as shown in Figure 5.

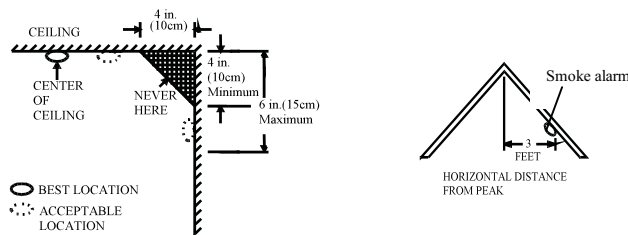


Figure 4: RECOMMENDED BEST AND ACCEPTABLE LOCATIONS TO MOUNT SMOKE ALARMS

Figure 5: RECOMMENDED LOCATION TO MOUNT SMOKE ALARMS IN ROOMS WITH SLOPED, GABLED, OR PEAKED CEILING

CAUTION (As required by the California State Fire Marshall)

"Early warning fire" detection is best achieved by the installation of fire detection equipment in all rooms and areas of the household as follows: (1) A smoke alarm installed in each separate sleeping area (in the vicinity, but outside of the bedrooms), and (2) Heat or smoke alarms in the living rooms, dining rooms, bedrooms, kitchens, hallways, attics, furnace rooms, closets, utility and, storage rooms, basements and attached garages."

For your information, NFPA Standard 72, Section 29 reads as follows: "29.5.1 Smoke alarms shall be installed outside of each separate sleeping area in the immediate vicinity of the bedrooms and on each additional story of the family living unit including basements and excluding crawl spaces and unfinished attics.

The provisions of 29.5.1 represent the minimum number of alarms required by this standard. It is recommended that the householder consider the use of additional smoke alarms for increased protection for those areas separated by a door from the areas protected by the required smoke alarms under 29.5.1 above. The recommended additional areas are living room, dining room, bedroom(s), kitchen, attic (finished or unfinished), furnace rooms, utility room, basement, integral or attached garage, and hallways not included in 29.5.1 above. However, the use of additional alarms remains the option of the householder." We recommend complete coverage and use of additional smoke alarms.

LOCATIONS NOT TO INSTALL YOUR SMOKE ALARMS

Nuisance alarms take place when smoke alarms are installed where they will not work properly. To avoid nuisance alarms, do not install smoke alarms in the following situations:

- Combustion particles are the by-products of something that is burning. Thus, in or near areas where combustion particles are present you do not install the smoke alarms to avoid nuisance alarms, such as kitchens with few windows or poor ventilation, garages where there may be vehicle exhaust, near furnaces, hot water heaters, and space heaters.
- Do not install smoke alarms less than 20 feet (6 meters) away from places where combustion particles are normally present, like kitchens. If a 20-foot distance is not possible, e.g. in a mobile home, try to install the alarm as far away from the combustion particles as possible, preferably on the wall. To prevent nuisance alarm alarms, provide good ventilation in such places.

IMPORTANT: For any reason, do not disable the unit to avoid nuisance alarms.

- When air streams passing by kitchens, the way how an smoke alarm can sense combustion particles in normal air-flow paths is graphically shown in Figure 6, which indicates the correct and incorrect smoke alarm locations concerning this problem.

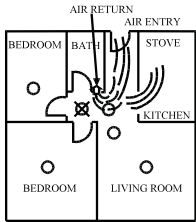


Figure 6:
RECOMMENDED SMOKE ALARMS LOCATIONS TO AVOID AIR STREAMS WITH COMBUSTION PARTICLES

- In damp or very humid areas, or near bathrooms with showers. Moisture in humid air can enter the sensing chamber, then turns into droplets upon cooling, which can cause nuisance alarms. Install smoke alarms at least 10 feet (3 meters) away from bathrooms.
- In very cold or very hot areas, including unheated buildings or outdoor rooms. If the temperature goes above or below the operating range of smoke alarms, it will not work properly. The temperature range for your smoke alarm is 0°C~49°C
- In very dusty or dirty areas, dirt and dust can build up on the alarm's sensing chamber, to make it overly sensitive. Additionally, dust or dirt can block openings to the sensing chamber and keep the alarm from sensing smoke.
- Near fresh air vents or very drafty areas like air conditioners, heaters or fans, fresh air vents and drafts can drive smoke away from smoke alarms.
- Dead air spaces are often at the top of a peaked roof, or in the corners between ceilings and walls. Dead air may prevent smoke from reaching an alarm. See Figures 4 and 5 for recommended mounting locations.
- In insect-infested areas. If insects enter an alarm's sensing chamber, they may cause a nuisance alarm. Where bugs are a problem, get rid of them before putting up an alarm.
- Near fluorescent lights, electrical "noise" from fluorescent lights may cause nuisance alarms. Install smoke alarms at least 5 feet (1.5 meters) from such lights.

WARNING: Never remove battery from smoke alarm to stop a nuisance alarm. Open a window or fan the air around the smoke alarm to get rid of the smoke. The alarm will turn itself off when the smoke is gone. If nuisance alarms persist, attempt to clean the smoke alarm as described in this User's Manual.

WARNING: Do not stand close to the smoke alarm when the alarm is sounding. The alarm is loud in order to wake you in an emergency. Too much exposure to the horn at close range may be harmful to your hearing.

INSTALLING YOUR SMOKE ALARM

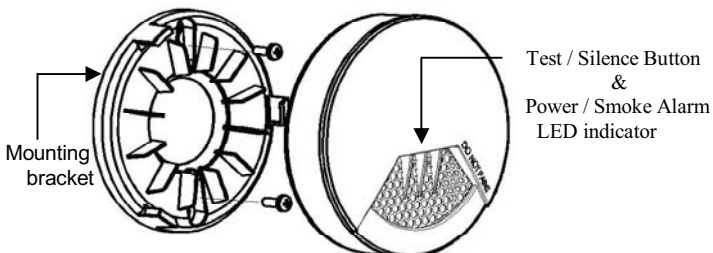
SD360 Smoke alarm is made to be mounted on the ceiling or on the wall if necessary.

WARNING: Do not connect SD360 smoke alarms to any other alarm or auxiliary device. Connecting anything else to this alarm will keep it from working properly.

Read "LOCATIONS TO INSTALL YOUR SMOKE ALARMS" and "LOCATIONS NOT TO INSTALL YOUR SMOKE ALARMS" section in this Manual first, then decide where to install a alarm.

Please follow these steps to install your smoke alarm:

1. At the place where you are going to install your smoke alarm, draw a horizontal line six inches long.
2. Remove the mounting bracket from your unit by rotating it counterclockwise.
3. Place the bracket so that the two longest hold slots are aligned on the line. In each of keyhole slots, drawing a mark to locate a mounting plug and screw.
4. Remove the bracket.
5. Using a 3/16-inch(5mm) drill bit, drills two holes at the marks and insert plastic wall plugs. Put the smoke alarm away from plastic dust on it when you drill holds for mounting..
6. Using the two screws and plastic wall plugs (all supplied) , attach the bracket to the wall.
7. Line up the slot of the bracket and the smoke alarm. Push the alarm onto the mounting bracket on turn it clockwise to fix it into the place. Pull onward on the smoke alarm to make sure it is securely attached to the mounting bracket..



CAUTION: This smoke alarm comes with cover latches that will prevent the smoke alarm cover from closing if battery is not installed. This tells you that the smoke alarm will not work until a new battery is properly installed.

NOTE: alarm horn will beep once after the detector is installed with battery and mounted with bracket 2~4 seconds. This means the smoke alarm is working normally and also indicates that the battery is positioned properly. Close cover, and then press the test button, holding it down for about 3 seconds until the horn sounds. The horn should sound a loud, pulsating alarm. This means the unit is working properly.

PRODUCT SPECIFICATION

Model SD360-B1, SD360-B1H, and SD360-A1 with battery

DL123A, CR123A -3V

SD360-B2, SD360-B2H with battery CR17335E-R-3V

SD-360-B3, SD360-B3H, SD360-A3 with battery CR17450E-R-3V

(P.S1: Model name suffixed with H means this model is with heat detection function)

(P.S2: Use the correct battery as per the model number)

Sensitivity: Meet with both UL217 & UL268 and EN14604 standard

Battery Power: 3V lithium battery

Warning sound pattern: meet with temporal three

Alarm Audibility: 85dB/3m

Alarm Temperature: 57°C~65°C (134°F~149°F)

Operation Temperature: 0°C~49°C (32°F~120°F)

Relative Humidity: 10~85%

Size: 120mm diameter x 5.3mm depth

STANDBY MODE

The red LED, as the ALARM indicator, are featured with the smoke alarm. It can be seen through the clear test button on the cover of the unit. When red LED flashes once 334 seconds, it indicates the smoke alarm is under normal operation. When smoke alarm senses smoke and simultaneously sounds an audible alarm with 3 beeps , pause and 3 beeps. The red LED will flash continuously and rapidly.

SILENCE FEATURE

The silence feature can temporarily quite an alarm for up to 10 minutes. To use this feature, press test/silence button on the cover when it alarms. However, if the smoke concentration around the smoke alarm unit is still at alarming level after 10 minutes of silence, the unit will re-alarm immediately..

LOW BATTERY WARNING SIGNAL

If the alarm horn begins to chirp once in 43 seconds with red and yellow LED flashing, this signal means that the smoke alarm's battery is weak. This low battery warning signal should last for up to 30 days , but you should replace the battery immediately to secure your protection.

TAMPER SWITCH FEATURE:

If the smoke alarm is not mounted into the bracket properly within 5 minutes after battery is installed, the tamper function is triggered and the Yellow LED is steadily on. If the smoke alarm is still not mounted into the bracket properly 5 minutes after battery is installed, you will hear temporal three sound with yellow LED steadily on until smoke alarm is mounted back into bracket properly. (P.S:SD360_A1, SD360_A3 no tamper function)

MAJFUNCTION (ERROR) SIGNAL:

If you hear 3 "beep" with yellow LED flashing 3 times in 43 seconds, it indicates that the smoke alarm does not work properly, please have it repaired or serviced.

TESTING YOUR SMOKE ALARM

Test the alarm weekly by pushing firmly on the test button with your finger for around 4 seconds until the horn sounds, the sound pattern is 3 beeps , pause, and then 3 beeps with red LED flashing continuously and rapidly.If the smoke alarm beeps three with yellow LED flashing three times in 43 seconds, it indicates the smoke alarm is not working properly, it requires to be repaired or serviced.

This is the **only way to make sure that the smoke alarm unit is working properly. If the unit fails to test properly, have it repaired or replaced immediately.** If you suspect that your smoke alarm does not go into alarm, test it by pressing the test button with your finger to ensure if it works properly.

WARNING: Never use an open flame of any kind to test your alarm. You may set fire to damage the alarm, as well as your home. The built-in test switch accurately tests all functions as required by Underwriters' Laboratories. They are the only correct ways to test the unit.

WARNING: When you are not testing the unit and the alarm horn sounds this means the smoke alarm has sensed smoke or combustion particles in the air. Be sure that the alarm horn is a warning of a possible serious situation, which requires your immediate attention.

- The alarm could be caused by a nuisance situation. Cooking smoke or a dusty furnace, sometimes called "friendly fires" can cause the alarm to sound. If this happens, open a window or fan the air to remove the smoke or dust. The alarm will turn off as soon as the air is completely clear.

NOTE: Do not disconnect the power or remove the battery from the smoke

alarm. This will remove your protection from fires.

- If the alarm horn begins to beep once in 43 seconds with red LED flashing, this signal means that the smoke alarm's battery is weak. Replace new battery immediately.

Keep fresh batteries on hand for this purpose.

NOTE: Use only the replacement batteries listed below:

1. (Duracell) DL123A, (Panasonic) CR123A 3V with minimum life time as long as 1 years under normal operation..
2. (FDK) CR17335E-R 3V with minimum life time as long as 3 years under normal operation.
3. (FDK) CR17450E-R 3V with minimum life time as long as 5 years under normal operation.

WARNING: Do not use any other kind of battery. This smoke alarm may not operate properly with other kind of battery

BATTERY INSTALLATION

1. Open battery compartment (see figure as below)
2. Install battery into compartment and make sure the "+" and "-" ends of each battery are aligned properly.
3. After battery is installed in compartment, you will hear a chirp which indicates the unit is receiving battery power.

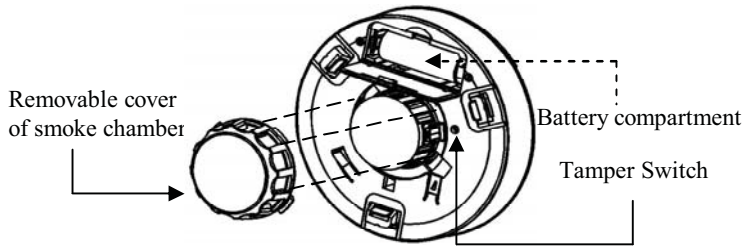
TAKING CARE OF YOUR SMOKE ALARM

Your smoke alarm is designed to be maintenance-free as possible. To keep your smoke alarm in good working condition, you must test the unit weekly, as referring to section "TESTING YOUR SMOKE ALARM".

Regular Maintenance:

- Open the cover and vacuum the dust off the alarm's sensing chamber at least once a month.

Remove battery before cleaning. To clean smoke alarm, use soft brush attachment to your vacuum. Carefully remove any dust on smoke alarm components, especially on the openings of the sensing chamber. Replace battery after cleaning. Test the smoke alarm to make sure battery is working correctly. Never use water, cleaners as they may damage the unit.



NOTE: If nuisance alarms keep coming from the unit, you should check whether the smoke alarm unit's location is adequate. Refer to section "WHERE TO INSTALL SMOKE ALARMS". Move your smoke alarm if it is not located properly. Clean the unit as described above.

TIPS TO ENHANCE YOUR PROTECTION FROM FIRES

Putting up smoke alarms is only one step in protecting your family from fires. You must also reduce the chances that fires will start in your home. And you must increase your chances of escaping safely if one does start. To have a good fire safety program you must apply the following tips to enhance your family's protection from fires:

1. Install smoke alarms properly. Carefully follow all the instructions in this manual. Keep your smoke alarms clean, and test them every week.
2. Remember that smoke alarm that do not work will not alert you. Replace your smoke alarms immediately if they are not working properly.
3. Follow fire safety rules, and prevents hazardous situations:
 - Use smoking materials properly. Never smoke in bed.
 - Keep matches and cigarette lighters away from children.
 - Store flammable materials in proper containers. Never use them near open flame or sparks.
 - Keep electrical appliances in good condition. Do not overload electrical circuits.
 - Keep stoves, fireplaces, chimneys, and barbecue grills grease free. Make sure they are properly installed and away from any combustible materials.
 - Keep portable heaters and open flames such as candles away from combustible materials.
 - Do not allow rubbish to accumulate.
 - Keep a supply of extra batteries on hand for your battery powered smoke alarms.
4. Develop a family escape plan and practice it with your entire family. Be sure to include small children in your practice.

- Draw a floor plan of your home, and find two ways to exit from each room. There should be one way to get out of each bedroom without opening the door.
- Explain to children what the smoke alarm alarm signal means. Teach them that they must be prepared to leave the home by themselves if necessary. Show them how to check to see if doors are hot before opening them. Show them how to stay close to the floor and crawl if necessary. Show them how to use the alternate exit if the door is hot and should not be opened.
- Decide on a meeting place which has a safe distance from your house. Make sure that all your children understand that they should go and wait for you there if there is a fire.
- Hold fire drills at least every 6 months to make sure that everyone, even small children, knows what to do to escape safely.
- Know where to go to call the Fire Department from outside your home.
- Provide emergency equipment, such as fire extinguishers, and teach your family to use this equipment properly.

MORE TIPS TO FACE A FIRE IN YOUR HOME

If you have made a family escape plan and practiced it with your family, you have increased their chances of escaping safely. Go over the following rules with your children each time you have fire drills. This will help everyone remember them in case of a real fire emergency.

1. Don't panic and stay calm. Your safe escape may depend on thinking clearly and remembering what you have practiced.
2. Get out of the house as quickly as possible. Follow a planned escape route. Do not stop to collect anything or to get dressed.
3. Feel the doors to see if they are hot. If they are not, open them carefully. Do not open a door if it is hot. Use an alternate escape route.
4. Stay close to the floor. Smoke and hot gases rise.
5. Cover your nose and mouth with a wet or damp cloth. Take short, shallow breaths.
6. Keep doors and windows closed. Open them only if you have to in order to escape.
7. Meet at your planned meeting place after leaving the house.
8. Call the Fire Department as soon as possible from outside your house. Give the address and your name.
9. Never go back inside a burning building. Contact your local Fire Department. They will give you more ideas about how to make your home safer from fires and how to plan your family's escape.

LIMITATIONS OF SMOKE ALARMS

Although smoke alarms play a key role in reducing damage resulting from home fires, they can only work if they are properly installed, located and maintained.

- Smoke alarm may not be heard if residents are hearing impaired.

Special designed units such as those with visual and audible alarms should be installed for hearing impaired residents.

- Smoke alarm may not waken all individuals if they are sound sleepers.

If children or other family members do not waken readily to the sound of the smoke alarm, or if there are infants or members with mobility limitations, make sure someone is assigned to assist them in fire drill and in the event of emergency.

FIVE YEAR LIMITED WARRANTY

EVERDAY warrants its enclosed Smoke Alarm - but not the battery - to be free from defects in materials and workmanship under normal use and service for a period of five years from date of purchase. Everyday makes no other express warranty for this smoke alarm. No agent, representative, dealer, or employee of the Company has the authority to increase or alter the obligations or limitations of this Warranty. The Company's obligation of this Warranty shall be limited to the repair or replacement of any part of the alarm which is found to be defective in materials or workmanship under normal use and service during the five year period commencing with the date of purchase. During the initial one-year period commencing with the date of purchase, such repair or replacement shall be made without charge. During the latter four years of the Warranty period, such repair or replacement shall be made at a charge to the Customer not to exceed the manufacturer's cost. Units in need of repair should be returned, shipping prepaid, to Customer Service Department, **EVERDAY TECHNOLOGY CO., LTD, NO. 95 SEC.2, LIGONG 1ST RD., LETZER INDUSTRIAL PARK, YILAN COUNTY 26841, TAIWAN.** The Company shall not be obligated to repair or replace units, which are found to be in need of repair because of damage, unreasonable use, modifications, or alterations occurring after the date of purchase. The duration of any implied Warranty, including that of merchantability or fitness for any particular purpose, shall be limited to the period of five years commencing with the date of purchase. In no case shall the Company be liable for any consequential or incidental damages for breach of this or any other Warranty, expressed or implied whatsoever, even if the loss or damage is caused by the Company's negligence or fault. Some states do not allow the exclusion or limitation of incidental or consequential damages, so the above limitation or exclusion may not apply to you. EVERDAY makes no warranty, expressed or implied, written or oral, including that of

merchantability or fitness for any particular purpose, with respect to the batteries. This Warranty gives you specific legal rights, and you may also have other rights which vary from state to state.

FEDERAL COMMUNICATIONS COMMISSION INTERFERENCE STATEMENT

This equipment has been tested and found to comply with the limits for a Class B digital device, pursuant to part 15 of the FCC Rules. These limits are designed to provide reasonable protection against harmful interference in a residential installation. This equipment generates, uses and can radiate radio frequency energy and, if not installed and used in accordance with the instructions, may cause harmful interference to radio communications. However, there is no guarantee that interference will not occur in a particular installation. If this equipment does cause harmful interference to radio or television reception, which can be determined by turning the equipment off and on, the user is encouraged to try to correct the interference by one or more of the following measures:

- Reorient or relocate the receiving antenna.
- Increase the separation between the equipment and receiver.
- Connect the equipment into an outlet on a circuit different from that to which the receiver is connected.
- Consult the dealer or an experienced radio/ TV technician for help.

CAUTION:

Any changes or modifications not expressly approved by the grantee of this device could void the user's authority to operate the equipment.

Labeling requirements

This device complies with Part 15 of the FCC Rules. Operation is subject to the following two conditions: (1) this device may not cause harmful interference, and (2) this device must accept any interference received, including interference that may cause undesired operation.