

---

**IP Wireless / Wired Camera**  
**IP Camera User Manual**

**(For Windows OS)**



# Content

<b>1</b>	<b>Product Overview .....</b>	<b>4</b>
1.1	Product package.....	4
1.2	Product Characteristics .....	4
<b>2</b>	<b>Device appearance and interface installation .....</b>	<b>5</b>
2.1	Device appearance .....	5
2.2	Interface installation .....	6
<b>3</b>	<b>Device installation.....</b>	<b>6</b>
3.1	Hardware installation .....	7
3.2	Software installation .....	10
<b>4</b>	<b>Visit IP CAMERA IN LAN .....</b>	<b>11</b>
4.1	Connection ways in LAN .....	11
4.2	Search and set device IP address.....	11
4.3	LOGIN IP CAMERA.....	14
4.4	IP camera operation.....	17
<b>5</b>	<b>Visit IP CAMERA IN INTERNET .....</b>	<b>20</b>
5.1	Connection way in Internet.....	20
5.2	Relate and setiing and visit IP camera .....	20
<b>6</b>	<b>The device like Mobile phone , PAD Etc. visit IP CAMERA.....</b>	<b>24</b>
6.1	Input IPAddress in the browser to visit.....	24
6.2	Install client-side software to access IPCAMERA .....	27
<b>7</b>	<b>Other setting.....</b>	<b>32</b>
7.1	network setting.....	32
7.1.1	Basic network setting.....	32
7.1.2	WIFISetting.....	32
7.1.3	Adhoc P to P wireless connection settig .....	34
7.2	Multi-device setting.....	37
7.3	MSN SETTING.....	38
7.4	DDNS SETTING.....	40
7.4.1	Factory DDNS .....	41
7.4.2	The third part DDNS .....	41
7.5	E-MAIL AND FTP SERVICE.....	42
7.6	Motion detection .....	46
7.7	Time of device and PTZ SETTING.....	50

7.8	Upgrade Device firmware .....	50
7.9	Backup and restore setting.....	50
8	APPENDIX.....	51
8.1	Register and apply for DDNS Service .....	51
8.2	Some special application for IPCAMERA.....	55
8.2.1	Open IP Camera though flow-media player .....	56
8.3	Frequently Asked Questions.....	59
8.3.1	I have forgotten the user and / or password .....	59
8.3.2	IP Address configuration.....	59
8.3.3	Network configuration.....	59
8.3.4	No pictures show.....	59
8.3.5	Network bandwidth problems.....	60
8.3.6	Why pop-up the prompt"Fail to connect the device"? .....	60
8.3.7	IP camera has connected with internet, why it can't visit though IP camera .....	61
8.4	The solution for Operation Common problems .....	61
8.5	The default Parameters.....	62
8.6	Technical parameters .....	63

# 1 Products overview

IP Camera is a IP integrated camera solution. For the user based on the local network ( LAN ) and wide area network ( WAN ) remote video surveillance products provides a clear, high integration, low cost solution. Integrated network and web service function, the shooting of the video can be transmitted through the network to any place, you simply through web browser can readily access live video. It can be applied in large stores, schools, factories, families and a series of places. Easy to install, easy to operate.

## 1.1 Product package list

- ✓ IP Camera\* 1
- ✓ 5V DC Adaptor \* 1
- ✓ Mounting bracket \* 1
- ✓ CD \* 1
- ✓ Network Cable \* 1

**Remark: if you choose Wifi fuction device, The package should be contained Wi-Fi Antenna**



Before you install the IP camera, please check the whether it contains all of the accessories. If it lacks of something, please contact with agents

## Product Features

- Powerful high-speed video protocol processor
- High-sensitivity 1/5" CMOS sensor
- It uses MJPEG Compression and has VGA/QVGA/QQVGA video definition for us to choose. And it support for adjusting video parameter and adapt users many kinds of browser demand.
- Inner microphone can achieve audio collection and two ways audio function ;
- IR night vision to support long distance night vision scope and achieve monitor for the whole days ;
- Embeded WEB SERVER to support multi-page browser to viewing
- Multi-level users management and passwords definition
- Support wifi network (Wi-Fi/802.11/b/g), Inner Wifi module can flexibly create wi-fi monitoring environment. ;
- Support motion detection which can achieve spot all-round monitoring. It can e-mail,FTP and send alarm message though alarm server etc. so achieve many kinds of alarm function. ;
- Pan/Tilt Pan 330° 、 Tilt 90° It is tiny and convenient installation which is suitable for all kinds of places;
- Support UPNP. It can support to achieve auto port map in the router ;
- Support mobile phone viewing ;
- Support remote upgrade;
- Factory set every device unique device serial number, unique factory DDNS, and burn it to device and when it connect with public internet, then it can visit though DDNS.
- Factory can provide free client software and multi-pictures , long time recording and video playback Etc.

## 2 Device appearance and interface

### 2.1 Device appearance



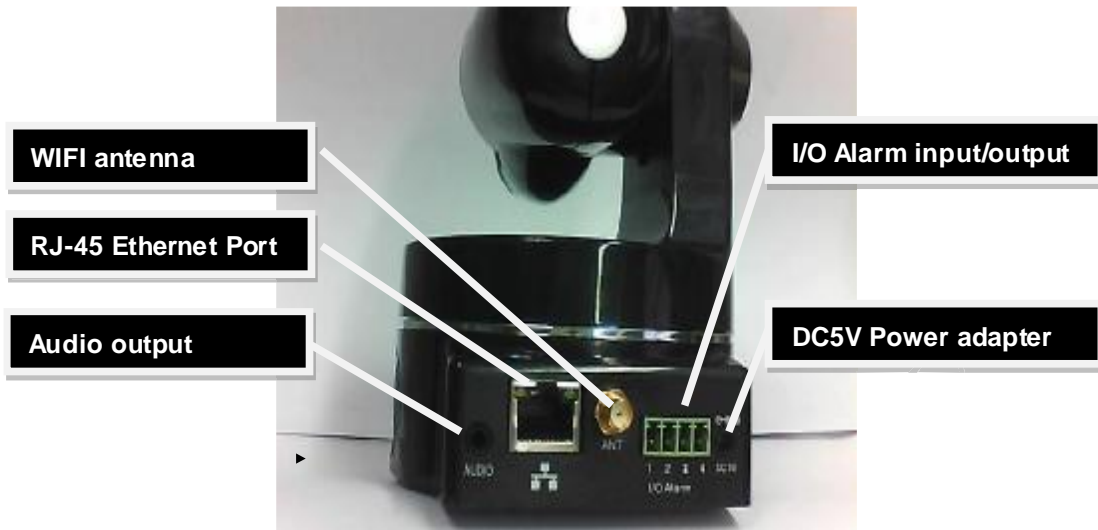
Picture 1 Device appearance

1. Sensitive Hole: According to outside of light decide whether open infrared LED
2. Infrared LED
3. Lens :CMOS Sensor .You can turn around the lens manually to adjust the focus range
4. Build-in Microphone

Warning: please don't forcibly manual translation/lifting cameras, because it is likely that damaged internal component!:

Build-in Microphone

## 2.2 Device interface



Picture 2 Device interface

**LAN :** RJ-45/10-100 Base T

**DC5V :** 5V/2A Power supply

**I/O PINS:** 1)Output(GND) 2)Output (+5V) 3)Alarm input 4)Input (GND) (you can see 3.5.6 For more information)



Picture 3 Reset Button

**RESET BUTTON:** Press and hold down the RESET BUTTON for 5 seconds. Release the power button and IP camera will be reset back to the factory default parameter

## 3 Device installation

**System configuration requirements:** ( Example for view four IP Camera )

**CPU:** 2.06GHZ or above **Memory:** 512M or above

**Network Card:** 10M or above **Display Card:** Microsoft DirectX 9 Pictur device or above memory

**Recommendable Operating System:** WindowsXP. Vista. Windows 7、 Windows 8

**Support web browser:** IE  . Firefox  、 Safari  、 Chrome  etc .

### 3.1 Install hardware

You should install your IP Camera's hardware according to the following step in order to make sure the IP camera can work properly. Especially, pay attention to IP camera's installation environment.

1) IPCAM. Plug DC adapter with IP camera

I.Note: Please use Dc adapter which is the standard configuration of IP camera. Using DC adapter without any certificate, may destroy IP camera.

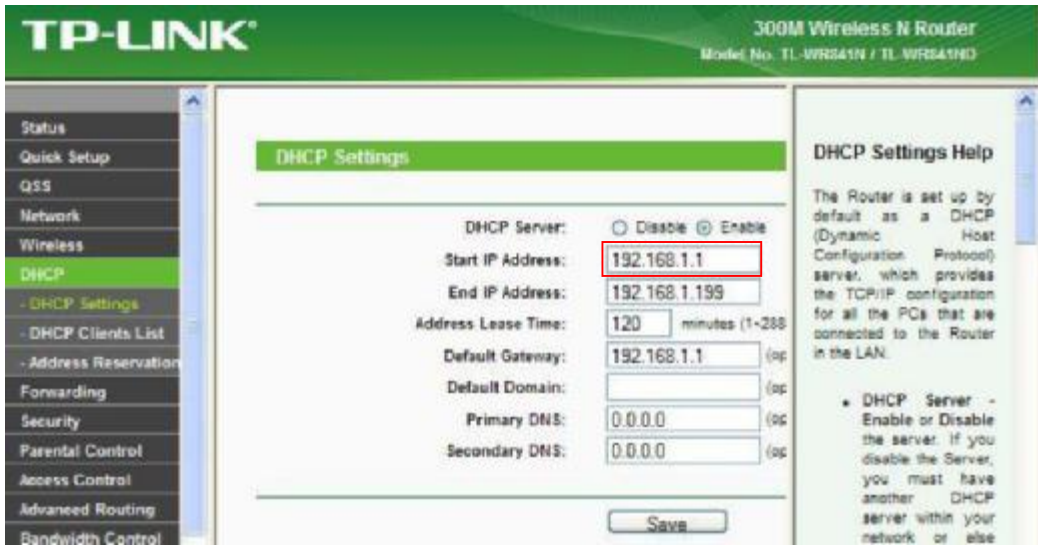
2) Plug cable with IP camera, and another side of cable should connect with DSL or router. In additional, make sure power of IP camera work properly and IP camera and PC are in the same Subnet( it can be LAN, and it also can use cable to connect PC and IP camera)



Picture 4 Network connection sketch map

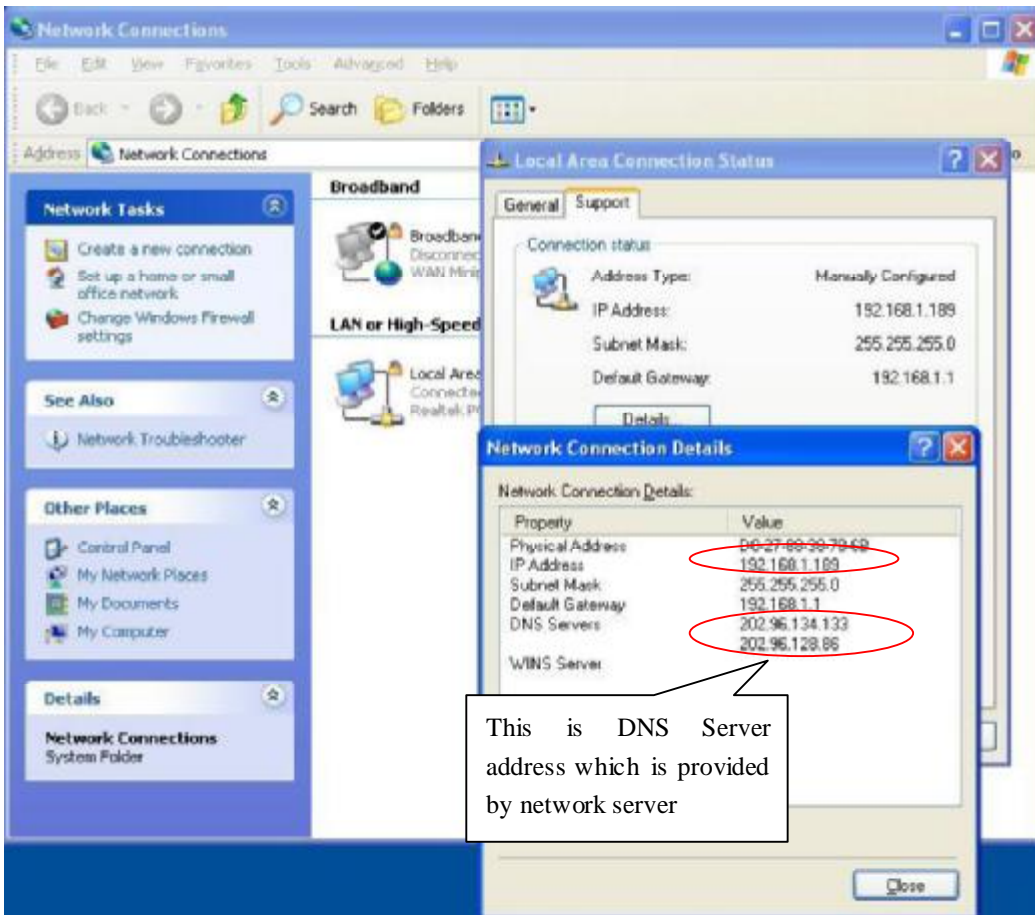
2) When you use IP camera for the first time, IP Address of IP camera obtain automatically. (Before using, please make sure "DHCP" Server function in LAN's router has been opened, or Server system open "DHCP" Server function) It is very convenient for users

to use because It is suitable for different LAN NETWORK environment.



Picture5

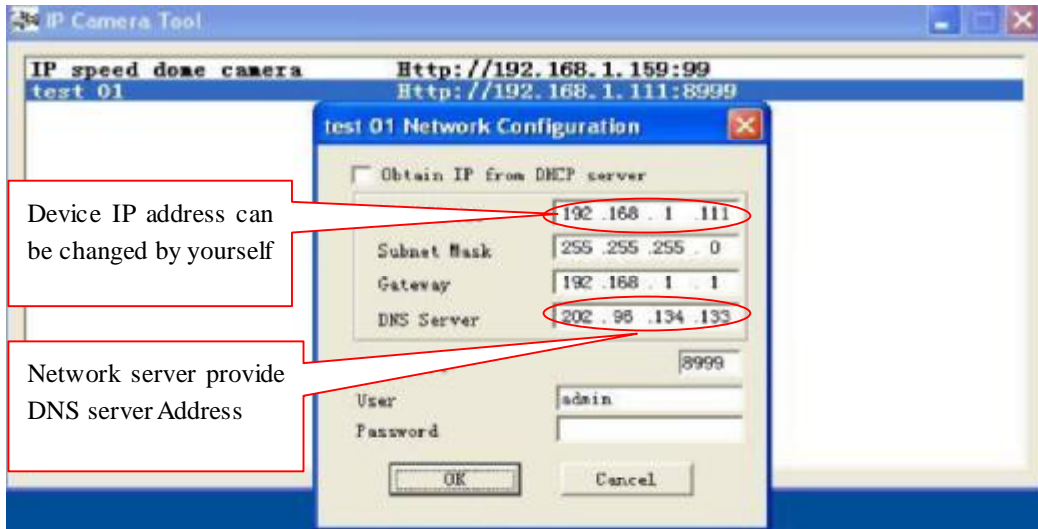
3) You can search PC IP and DNS Server as follows :



Picture 6

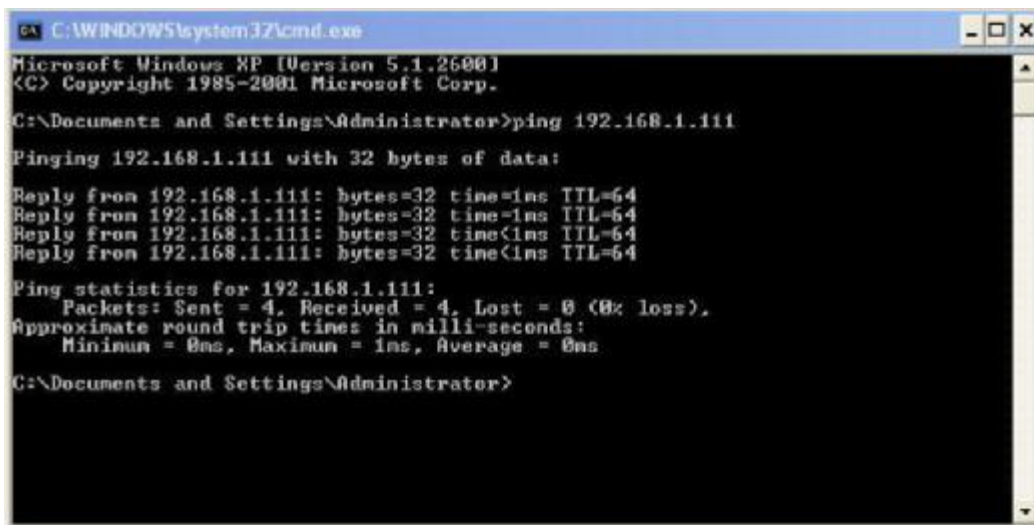


- 4) The device IP Address can be changed, but Its IP address should be at the same with PC's subnet.



Picture 7

When we test IP camera and check whether it starts smoothly or it connects properly, we can operate in the Windows (START- RUN-CMD), and then input : ping 192.168.1.111 in the order windows.



Picture 8 ping IP Camera

Check whether it can "Ping" IP camera, If yes, then it means IP Camera has been worked properly and connected correctly.

### 3.2 Software installation

#### Software installation

● It is very easy to install software. You just need to run installation programme then it can work properly. ◦


Please put CD in the PC driver and the CD will automatically run to the software installation interface:



Picture9 Software installation interface

If no such an interface, please click “autorun.exe” in the CD



● And then find “search.exe” . Click and install LAN Tool to PC system, then you can view “IP Camera Tool” in Computer desktop for LAN Search tool. “IP Camera

Tool” 

## 4 Visit IP camera in LAN

### 4.1 Connection ways in LAN



Picture 10 Connection between Several IP camera and router

### 4.2 Search and set device IP address

Please note before searching IP camera:

- 1: Make sure IP camera has a good connection with power and network.
- 2: The router should be opened DHCP(Dynamic host configuration protocol) because the factory setting status of IP camera is to obtain automatically IP camera.
- 3: When we power IP camera, we should wait 20 second then it can works

#### ● Search IP camera

When we run Search tool" IP camera Tool", we can find the IP camera showing IP address, Port, Name. If we use Wi-fi connection, we will find Wi-fi IP address. For the details, we can view the following picture.



Picture 11

Note: ("IP Camera Tool.exe" Programme only use to search IP camera address and port in the LAN. The tool can't search IP camera IP address and port in the WAN.

There are 3 cases:

- 1 No IP Camera found within LAN. After about 1 minute search, the Result Field will show "not found IP Server";
- 2 IP Cameras having been installed within LAN. All the IP Cameras will be listed and the total number is displayed in the result field as shown in Picture 2.0.
- 3 The IP Cameras installed within LAN do not share the same subnet with the monitoring PC. A prompt as shown in result field (prompt: Subnet doesn't match, click to change!). Click the left mouse button to choose the prompt and click the right mouse, choose Network Configuration to set the IP address of the Camera to the same subnet as LAN.

● **SIX Options**

Choose the IP Camera list and Click right mouse button, there are six options, Basic Properties, Network Configuration, Upgrade Firmware, Refresh Camera List, Flush Arp, About IP camera tool as shown Picture 12.



Picture 12

**Basic Properties**

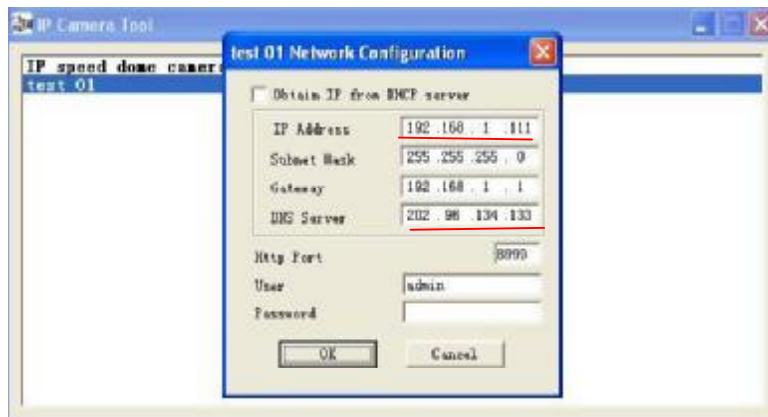
There is some device information in the Basic Properties, such as Device ID, System Firmware Version, Web UI Version



Picture 13

**Network Configuration**

In this page, you can configure the Network parameter.



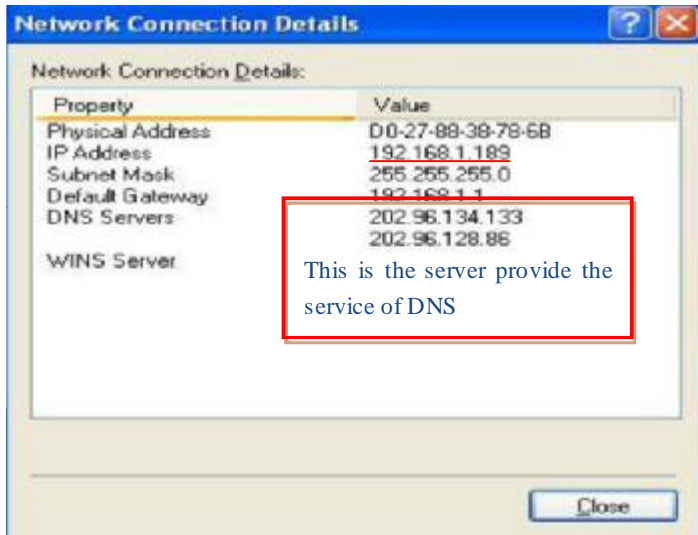
Picture 14

IP address: Fill in the IP address assigned and make sure it is in the same subnet as the

Subnet Mask: The default subnet mask of the equipment is: 255.255.255.0

Gateway: Make sure it is in the same subnet with PC IP address. Default Gateway address is 192.168.1.1

DNS:Server: IP address of IPS network provider. ( It also can view from network card local area connection status). As blows picture.



Picture 15

**Http Port:** LAN port assigned for the equipment, usually 80

**User & Password :** Default administrator username/password: admin/No password

**Enable Using DHCP:** the system will assign a reasonable IP address for your equipment only if your gateway supports DHCP (It is the case with most gateways).

DHCP checkbox: if checked, the device will obtain IP from DHCP server (To be make sure the Router which the device connect with has DHCP function).

**NOTE:** when the prompt "subnet doesn" t match, double click to change!", please set the IP Camera IP address once again.

● **Upgrade Firmware**

Enter the correct User and Password to upgrade system Firmware and Web UI. (User should have administering authority.



Picture 16

- **Refresh Camera List**

Refresh camera list manually.

- **Flush Arp Buffer**

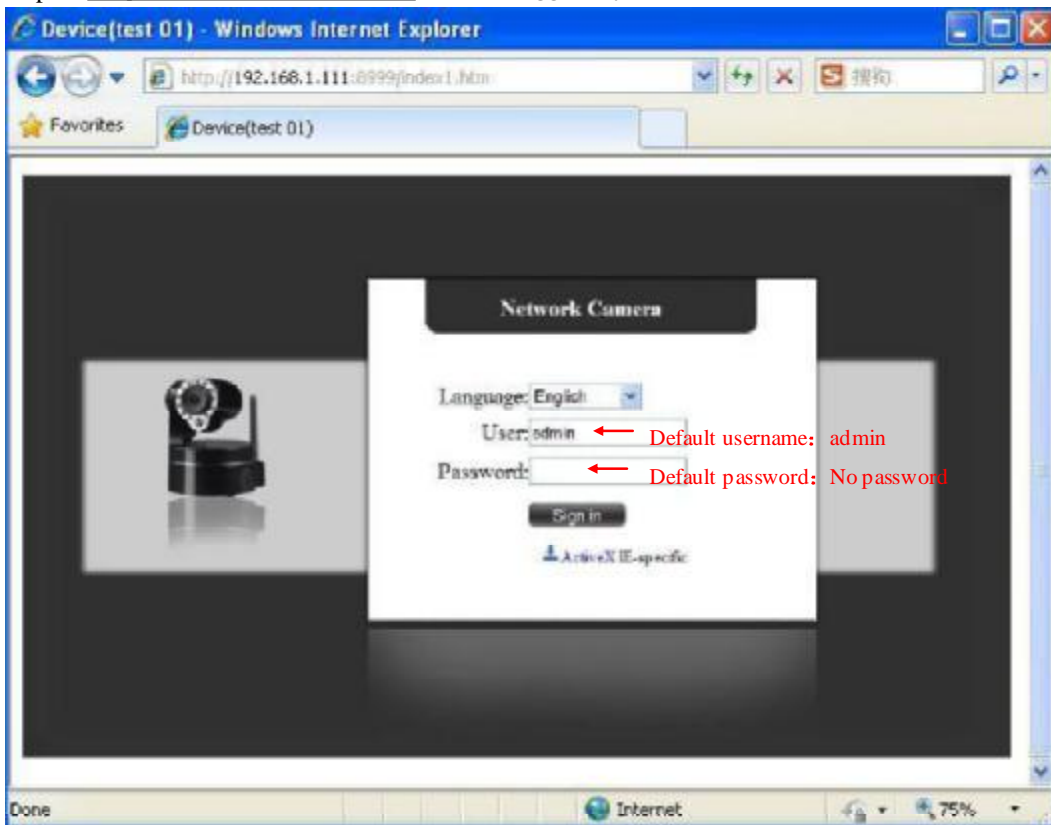
When cable network and wireless network of the device both are fixed IP address. There is a problem you may encounter is can search the camera IP but can't open the camera web page. you may try to use flush arp buffer.

- **About IP Camera tool**

You can view IP camera tool version and ActiveX version..

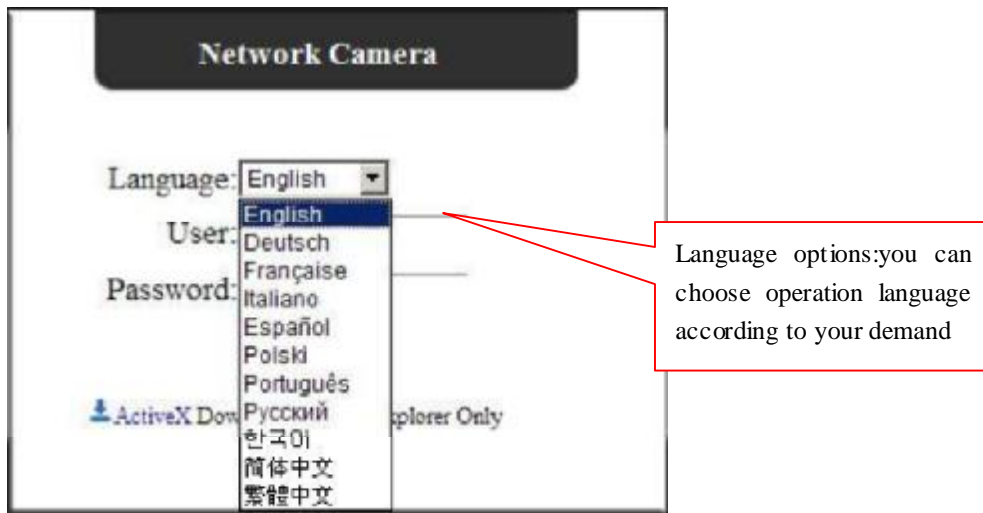
### 4.3 Login IP camera

● Double click the IP address of the IP Camera listed IE will be opened automatically and display the camera login page Or Access the camera by IE browser directly, type in the camera's IP address. For example :<http://192.168.1.111:8999>. ( We suggest you use IE browser for it has more function.

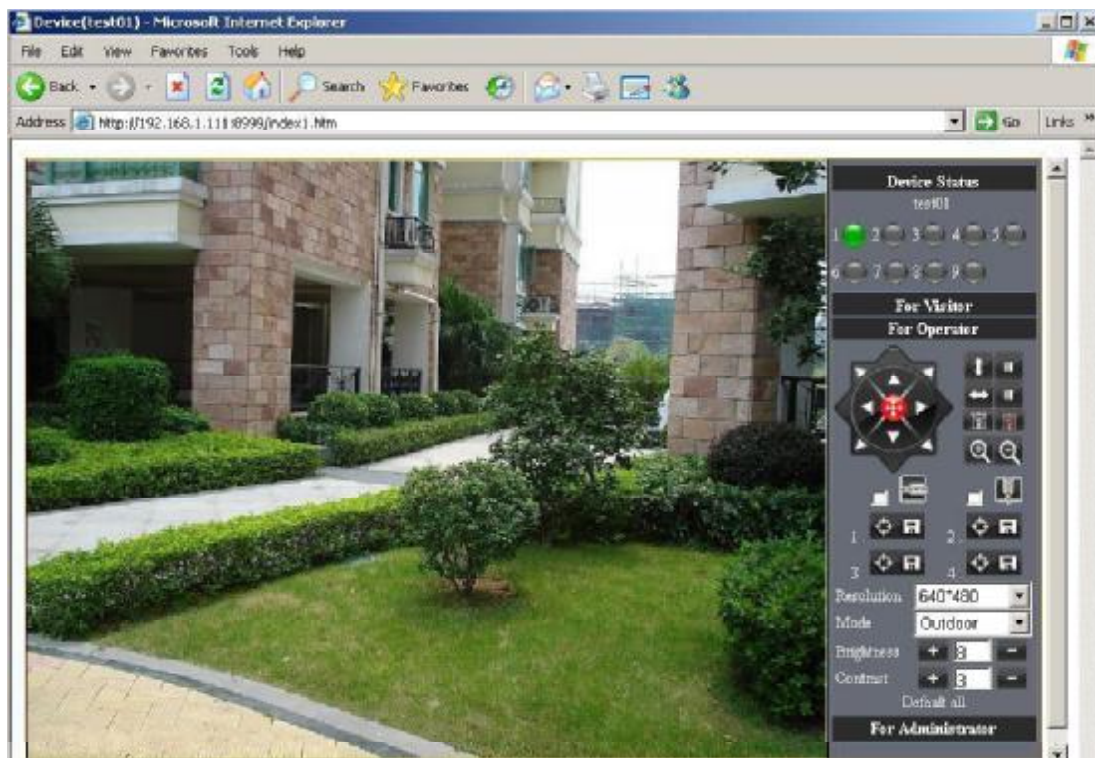


Picture 17

● IP camera Default username is admin, no password. And Click “Sign in” to enter the monitoring page

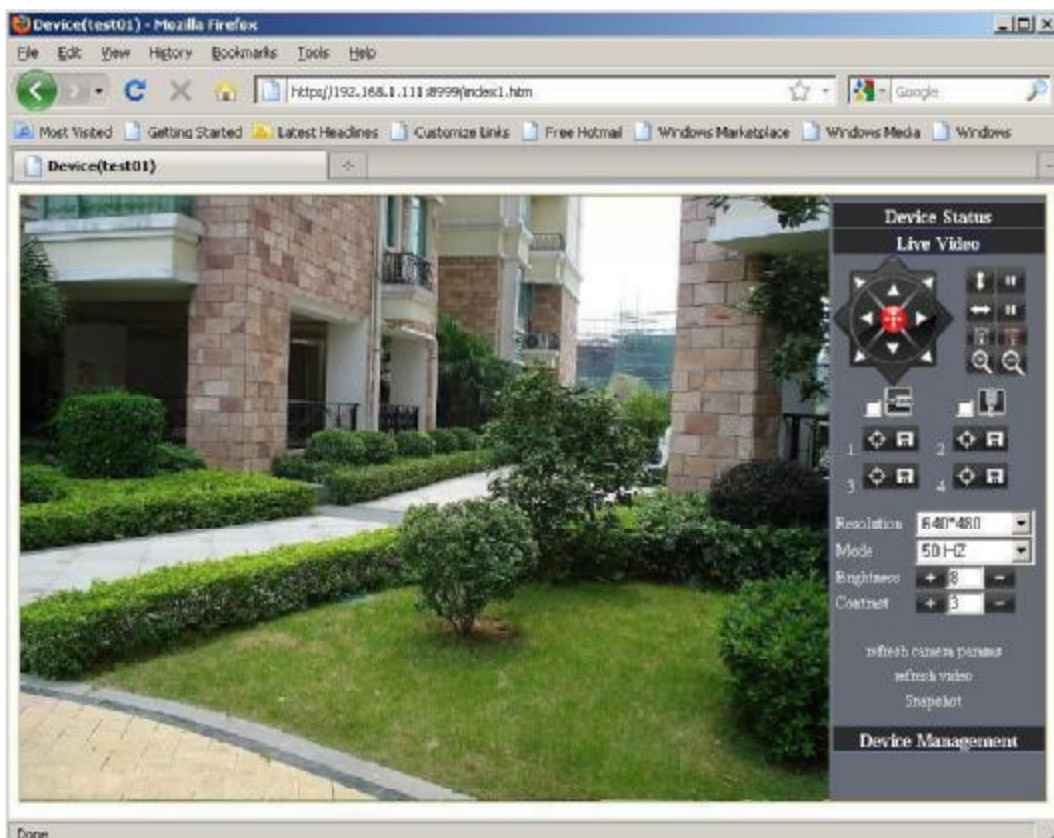


Picture 18

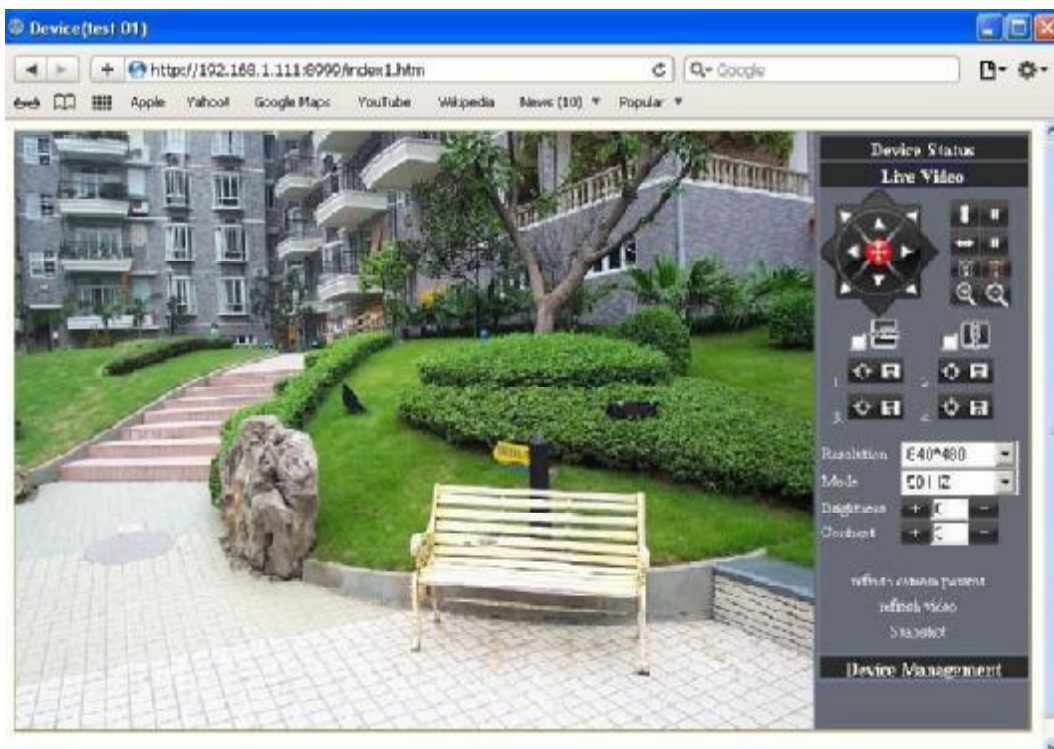


Picture 19

- When Users login in, they can view images. At the same time, users (Administrator, Operator or Visitor) can operate according to their permissions  
By Firefox and Safari browser as below:



Picture 20




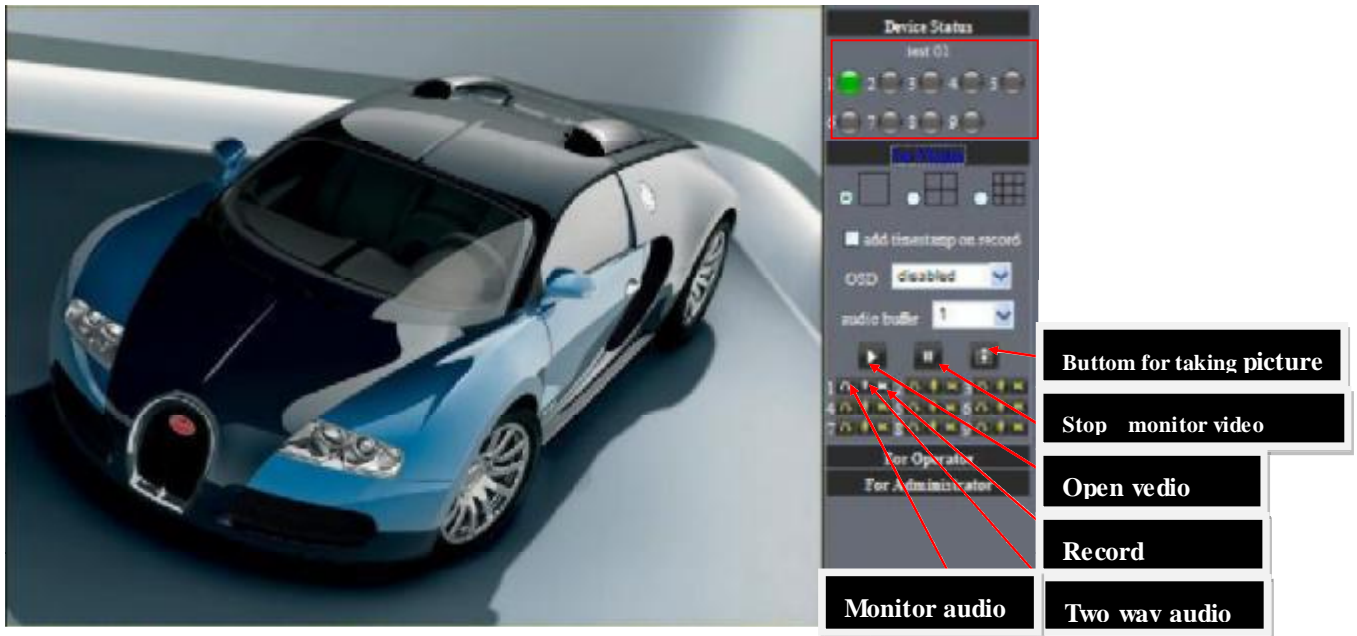
Picture 21



## 4.4 IP camera operation

### 4.41 For Visitor”


For example: if  is bright ,the first route is at status of Detection(Only IE Browser can view it)



Picture 22

The right upper is status's indicator area which can show 9 IP camera status.

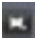

- When the button is gray, it means IP camera didn't connect.
- Green means IP camera has connected.
- Yellow means there is something wrong with connection.
- Red means it is the status of alarm.

If you want to detect 4 views , need to click this icon  .

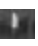

OSD: Display date and time on the video. You can disable the OSD function or choice other color.

(OSD:on-screen display)

Snapshot: Click icon  to snap the picture.

REC: Click icon  into REC mode,  is stop.

Audio:Click icon  into Audio mode,  can listen the voice in monitoring range..

Talk: Click icon  into Talk mode, and the icon will become , Visitor can talk with whom is in the monitoring range.

**Note:** the record file name is : device Alias\_ Current time.Avi

**For example:** IPCAM\_20101011134442.Avi

It means the device alias is IPCAM and its record's end time is : At 13:44:42 on

October 11, 2010. When use motion detection and checked Send Mail on Alarm.

The name of the picture received in mailbox is like this: device id(Alias)\_ Current time.jpg

### 4.42 For operator

When login as operator, you can operate Pan/Tilt and adjust video parameter.



Picture 23

Direction control: click the different arrow will get different direction view



Vertical patrol



Horizontal patrol



Stop patrol



I/O output Switch on /off.



**Lens adjusting**



**Infrared light software control switch**



Image fluctuation flip(up and down)

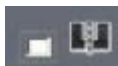


Image around flip (right and left)



Set Preset : (can set 4 preset)

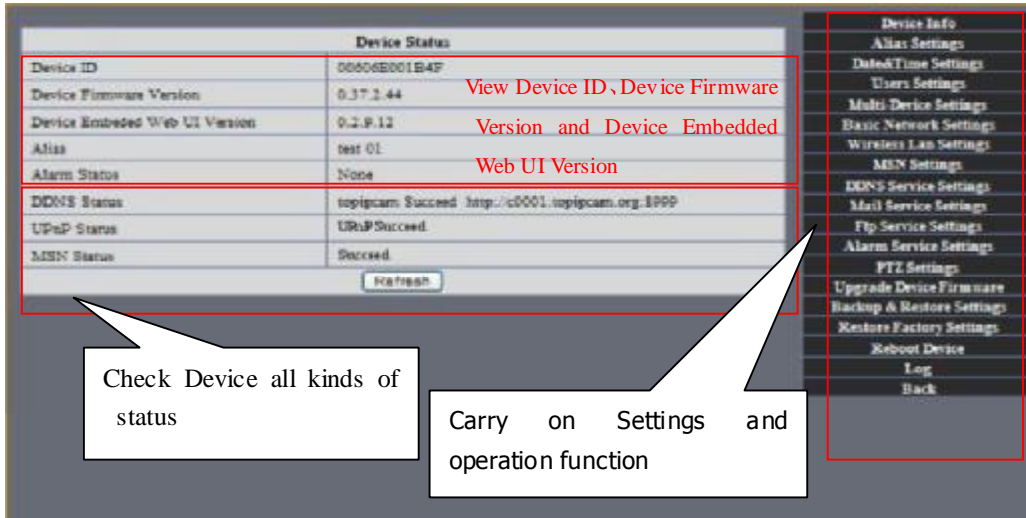
Resolution::VGA (640 X 480) / QVGA(320 X 240)

Work Mode :50Hz/60Hz/Outdoor

color parameter: Click or can adjust brightness and contrast .

### 4.43 For Administrator

When you login as administrator, you can set all parameters. Please click “For Administrator” and enter into setting interface .



Picture 24

**Alias Settings:** You can Input the new name as you like.

**Data &Time Settings:** Data &Time Settings page.

**Users Settings:** Eight accounts are acceptable for this system. Here the eight users can configure their user names and password as Administrator, Operator or Visitor.

- **Visitor:** In this mode, you can only view.
- **Operator:** You can control the direction of IP Camera and set some parameter.
- **Administrator:** You can setup the advanced configurations of the IP Camera.

**UpnP Settings:** If you access IP Camera, to be make sure **UpnP Status** is Succeed.

**Upgrade Device Firmware:** Upgrade Device Firmware and device embedded web UI software in this page.

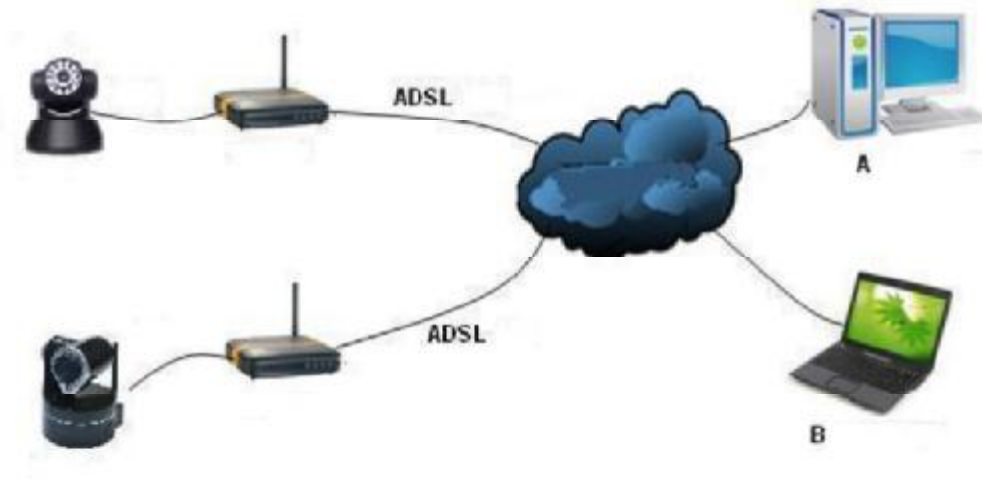
**Restore Factory Settings:** Restore factory settings of the device.

**Reboot Device:** Reboot the device.

**Back:** Back to Monitoring Mode.

# 5 Visit IP Camera in internet

## 5.1 Connection way in Internet



Picture 25

### Related setting and login IP camera

1. If the network your IP camera using is using static IP, you just need to input this IP address and IP camera's port in the browser, then it can visit IP camera.
2. If you are using ADSL to dial-up and surf on line, you should obtain IP Camera Current WAN IP Address or configured DDNS.

#### 1) There are four ways for you to obtain WAN IP Address:

##### ① Using mail to send internet IP function

After setting mail successfully, IP will send mail to your receiver e-mail box when Internet IP or port has changed. If it is dynamical IP, users need to input this IP address to visit this IP camera.

##### ② Obtain from some website

It is very easy for you to obtain WAN'S IP address. You can open browser on the computer on the condition that IP camera and PC are the same subnet. For example:: <http://www.whatismyip.com>.or <http://www.myip.cn> etc.s., It will tell you WAN'S IP address as shows below.



Picture 26

##### ③ Obtain from MSN and IP camera's MSN ACCOUNT( Details 3.53)

##### ④ Obtain from router

We take " Nur8555M " from " Xinxiang" 's router as example

A.According to router's manual, we get Router's IP is [192.168.1.1](http://192.168.1.1)

B.Login in router,; Input [192.168.1.1](http://192.168.1.1) in the browser. Find the status of Router and find Router's WAN( In this example, WAN'S IP is [116.24.235.122](http://116.24.235.122); As shows Picture 27.

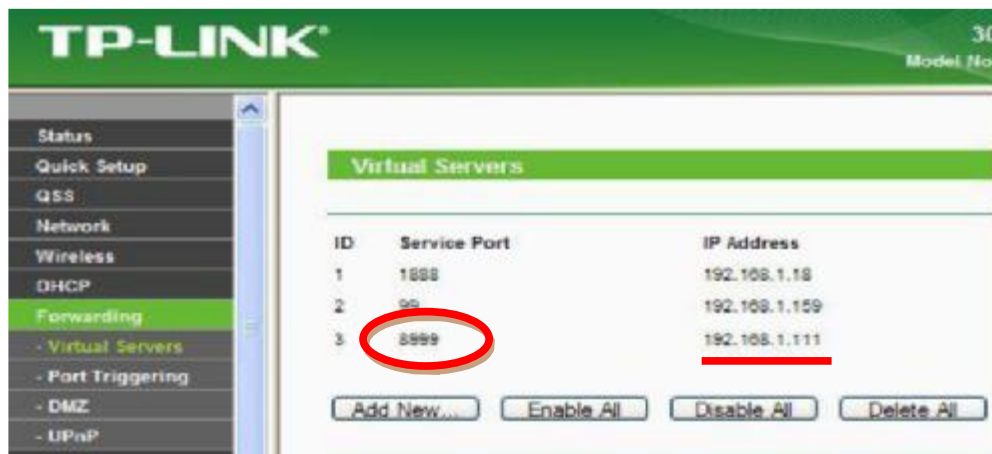


Picture 27

Now you can visit IP Cam from Internet. What you should do is to Input correct IP address . For example: [Http:// 116.24.235.122:8999](http://116.24.235.122:8999).

**Note: Make sure the Port's UPNS is available. You can open UPNP via the following ways.**

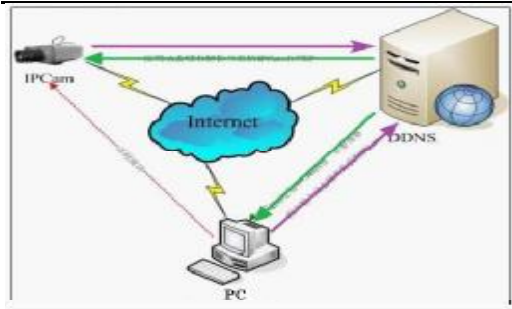
- Enter into Routers' setting page( Details : Router's user manual) to make UPNP available. Or enable virtual mapping function. Add equipment IP address and port to the virtual mapping list,



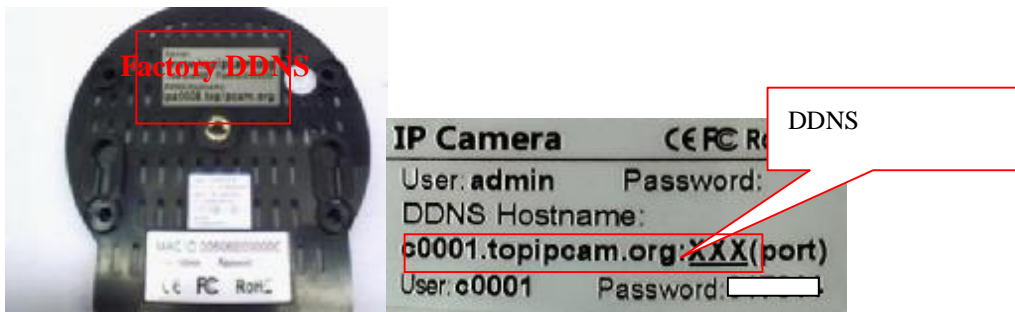
Picture 28

Users can access the Internet from IPCAM device. Input address .For example, [Http:// 116.24.235.122:8999](http://116.24.235.122:8999)

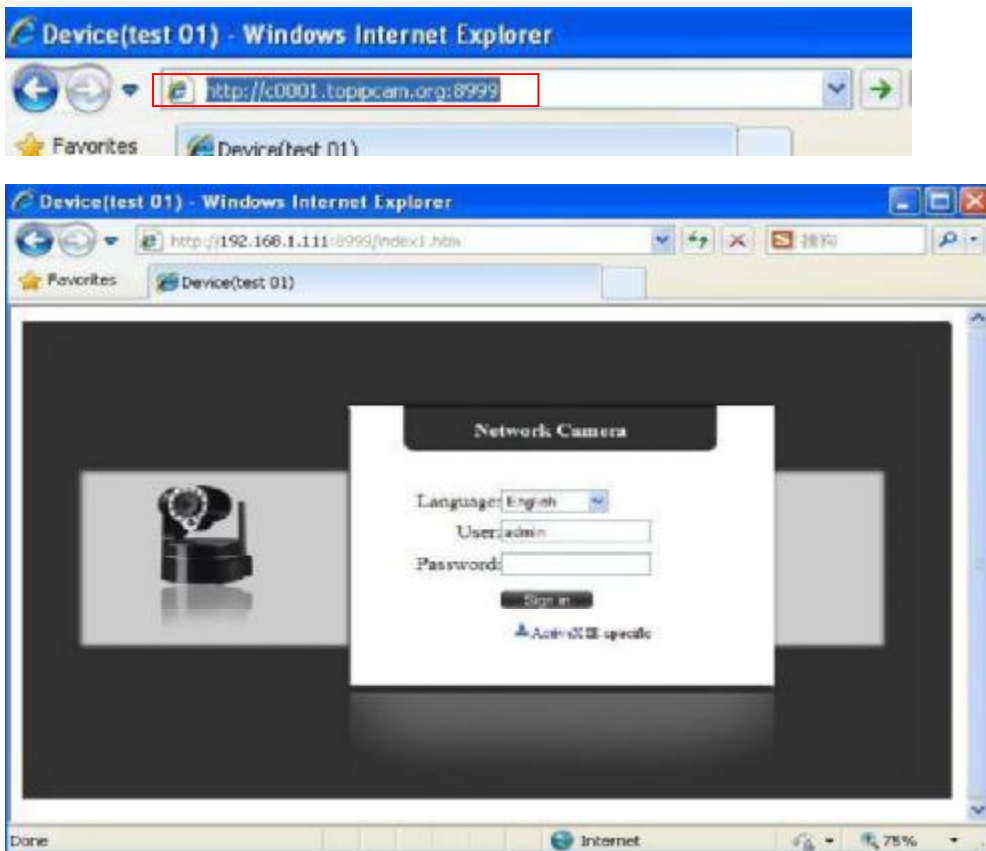
2) DDNS (dynamic DNS) service is the Internet domain name can be fixed and dynamic IP address real-time corresponding (analysis) service. Simply said, whenever user surf on internet or what kind of way you are using the Internet, get a what kind of IP address, IP address whether it will change, DDMS can ensure that a fixed domain name can access to a user's device.



Our products have been configured the DDNS services, of course, you can also apply for the domain name in registration website for one of your own domain name to configuration. For example: [www.dyndns.org](http://www.dyndns.org)



You need fill in DDNS and port. for example: (<http://c0001.topipcam.org:8999/>). The browser will jump to IP camera's login page. .



Picture 31

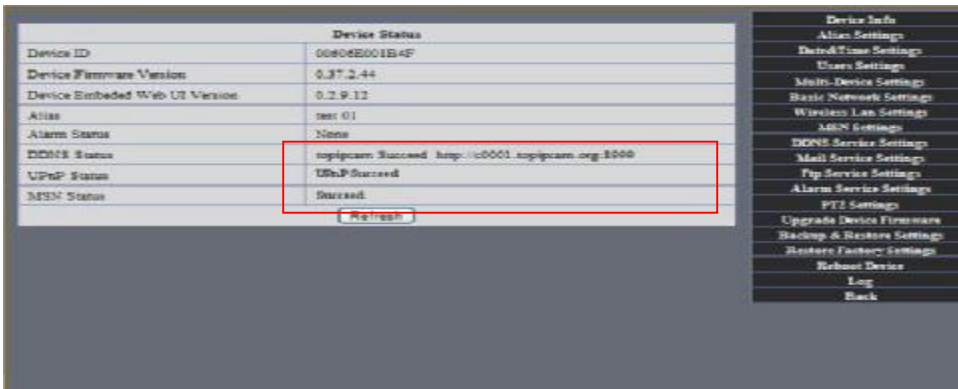
The input device user name and password to login to equipment



- If input domain name, but can't open IP camera in the browser, such as the situation is as follows



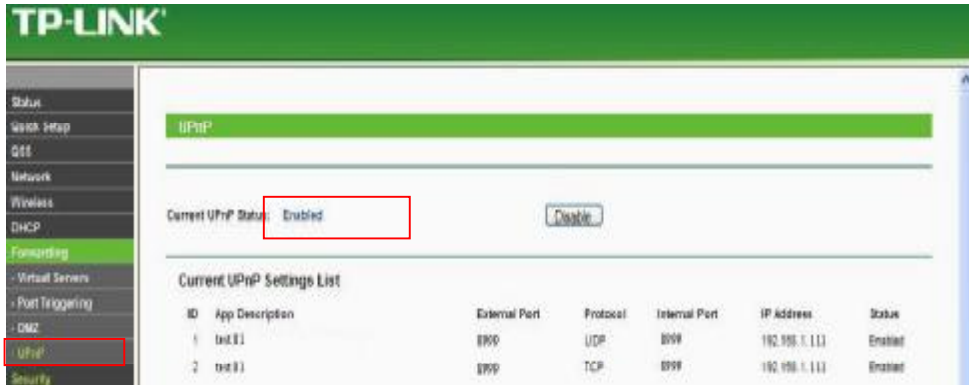
- Please open the device and check status of IP camera in the local area network, confirm whether UPNP function and DDNS is successful or not.



- You need to set port mapping function successfully, to check whether the router UPNP function is available, if it was unavailable, please make it available refer to the routers user manual!

If you use TPLINK router, please refer to these instructions

- Through the upnp automatic mapping port to the network: input router IP address in the browser (such as "http://192.168.1.1/ >, the router IP addresses are written on paper label on the router house---- please set according to your own IP address), open the routers page" forward rules "> >" upnp set ", to ensure that the current state of upnp is "already available," as below:



Note: some of the router interface without "UPnP Settings" option, the n need to open the virtual server IP cameras in the local area network of mapping the connection IP address and port number



## 6 Access IP camera via mobile equipment such as mobile phone,Ipad Etc.

There are two kinds of ways to access IP camera: One is to input IP address in browser directly, It can be IP address and also can be DDNS. Another is to use clients to visit. !

### 6.1 Input IP address in browser

1 ● We take IPAD as example as blows:

Open browser "Safari"

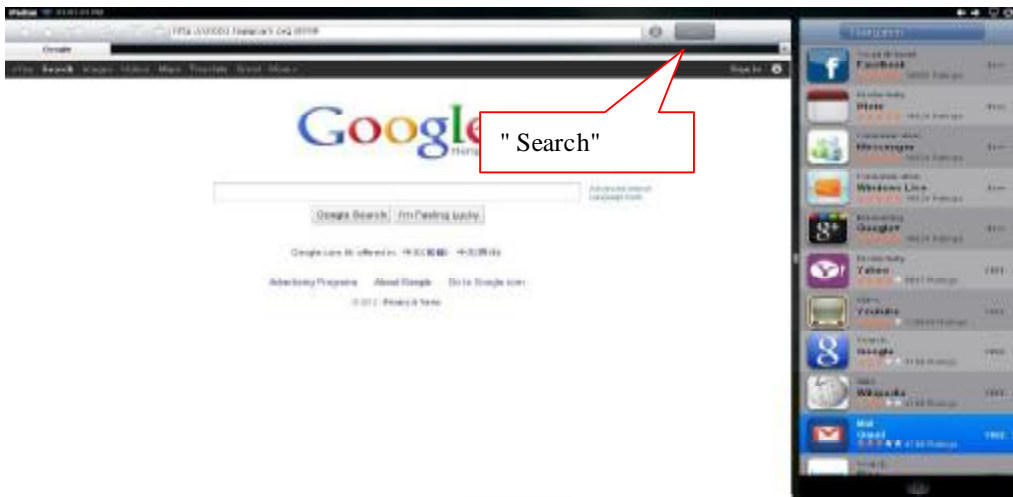




- Input IP camera's IP address, for example:(<http://c0001.topipcam.org:8999>)



Picture 37



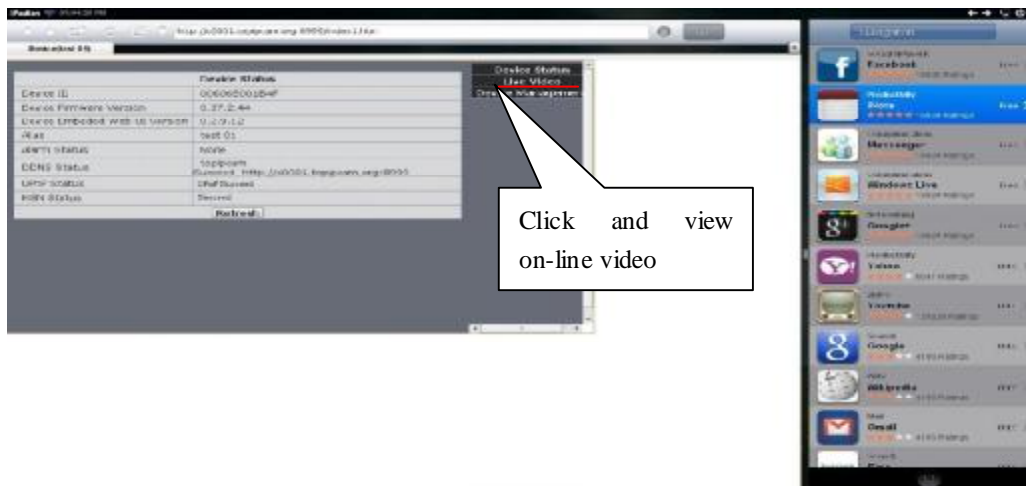
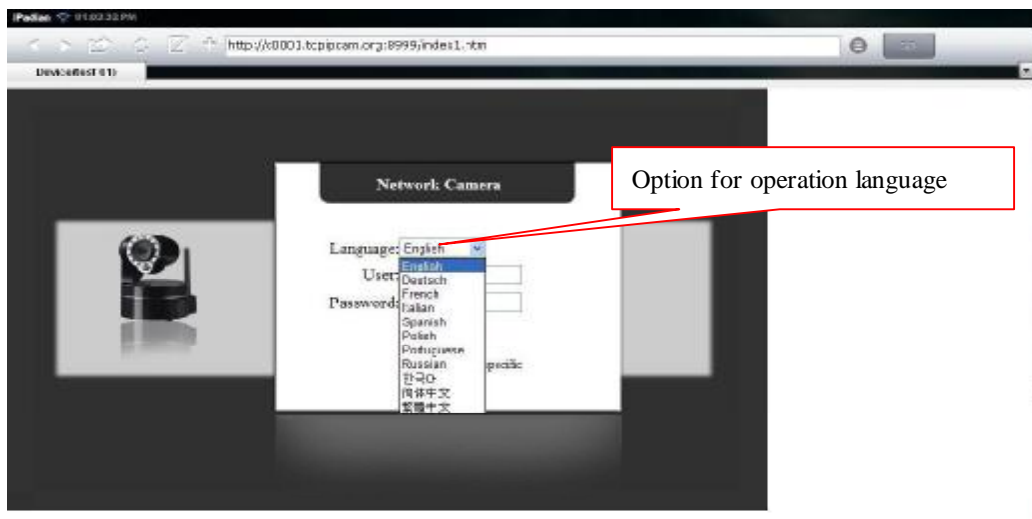
Picture 38

- enter your account and password on the login page as shown By default , administrator's username is: admin and no password.



Picture 39

- Choose language according to your demand and choose login mode according to your browser



Picture 41

●Open IP camera successfully



2● Now we take Android system device as example:

Open menu and firstly open the browser, and input IP camera 's IP address in the browser ,for example:: (<http://c0001.topipcam.org: 8999>)



- Input IP camera's username and password and click " sign in", and then enter into browser model to choose login-in interface.



Picture 44

## 6.2 INSTALL CLIENT-SIDE SOFTWARE TO ACCESS [IPCamera](#)

There are many client software support IP camera, several third-party software support our IP cameras too. The following are our manufacture software setup process.(the Android version),



1. Pls get the install applications in the CD or you can download from the website:

<https://play.google.com/store/search?q=reecam&c=apps>, Choose the right

① installation file-ipcamera.apk.

running environment: Android version 1.6 or above

**Note: Please ensure that mobile phones can connect to the Internet before install.**

②. Install method:

2.1 Insert SD card into Android mobile phone.

2.2 Connect the cellphone to computer via USB data cable

- 2.3 Choose the USB connection model on your cellphone; you can see the SD driver in “my computer”
- 2.4 Copy the ipcamera.apk into SD card.
- 2.5 Disconnect the device, pls find the ipcamera.apk in “File Management” and run it.
- 2.6 The ipcamera application will be show up on the home screen after you successfully installed.

③ Software operating processes:

First ensure that the Internet open WIFI connection, the search in the Play, in The Googl Android application reecam.

Open the WiFi connection

Search reecam

Download and install the application

Open the camera application

Click here to add a video camera

Refresh LAN cameras

Select to add to the client camera

Preview camera

IP address

Http port

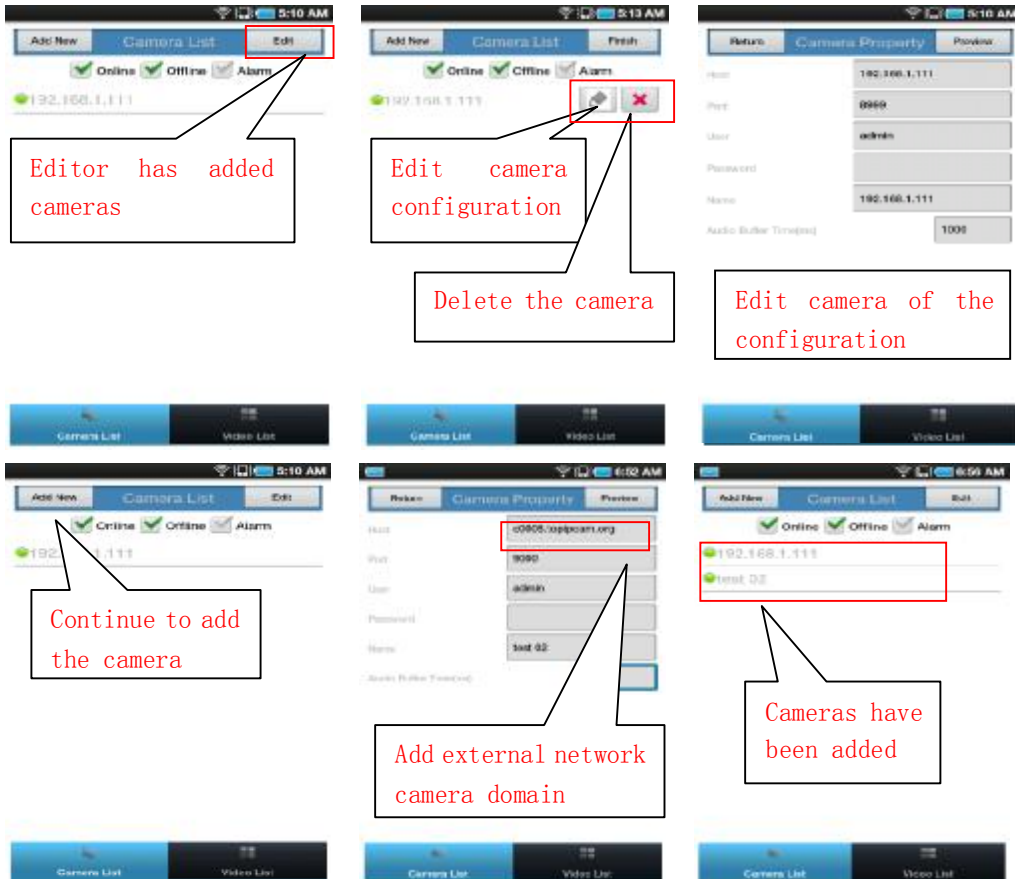
The default password is blank

Camera name

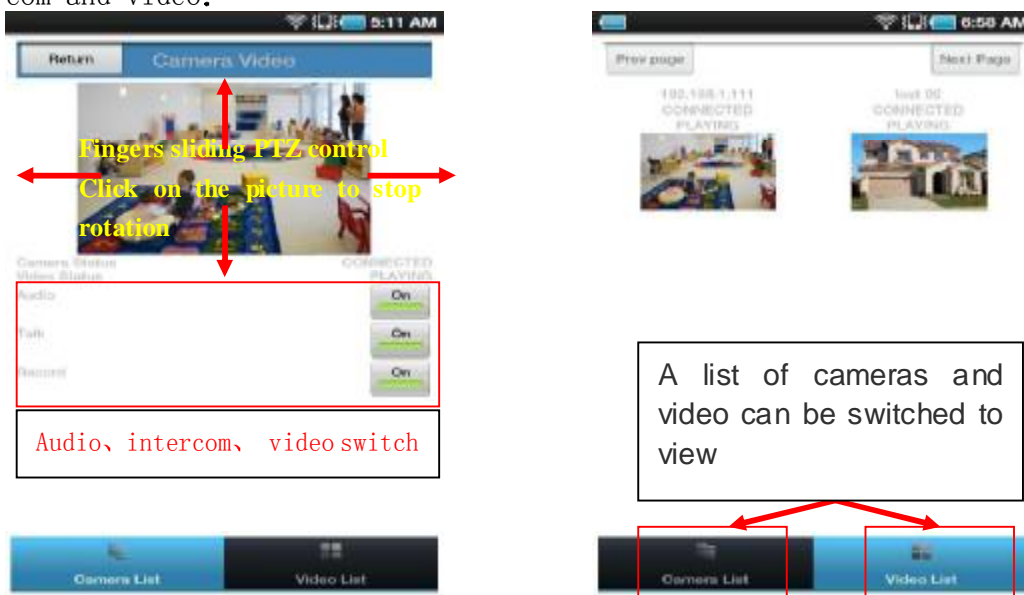
Preview the camera screen, save the camera

View or change the configuration of the camera, the camera

- You can edit the camera, modify camera configuration and delete camera operation.



- For the camera added to the camera list, you can watch camera in real time, control camera's PTZ and set switch-on and switch-off of the camera's audio, intercom and video:





2. The IPCamera setting process for iPhone iPad

Firmware requirements: compatible with iPhone, iPod touch, and iPad.

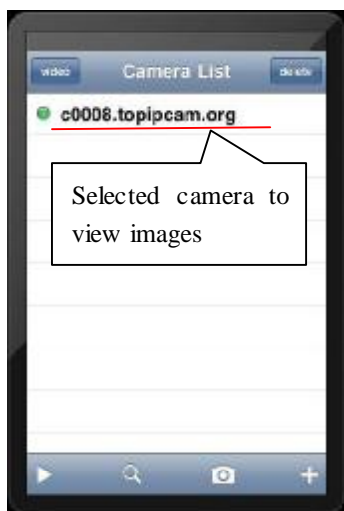
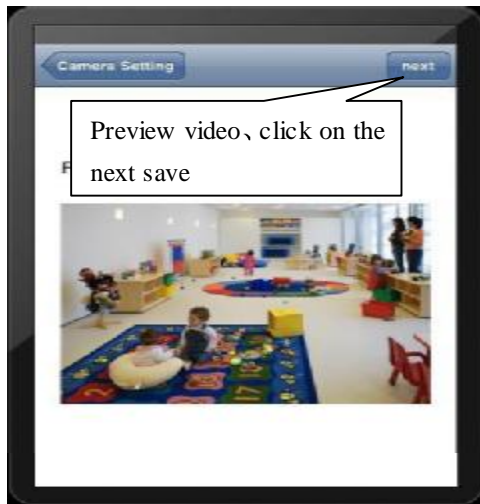
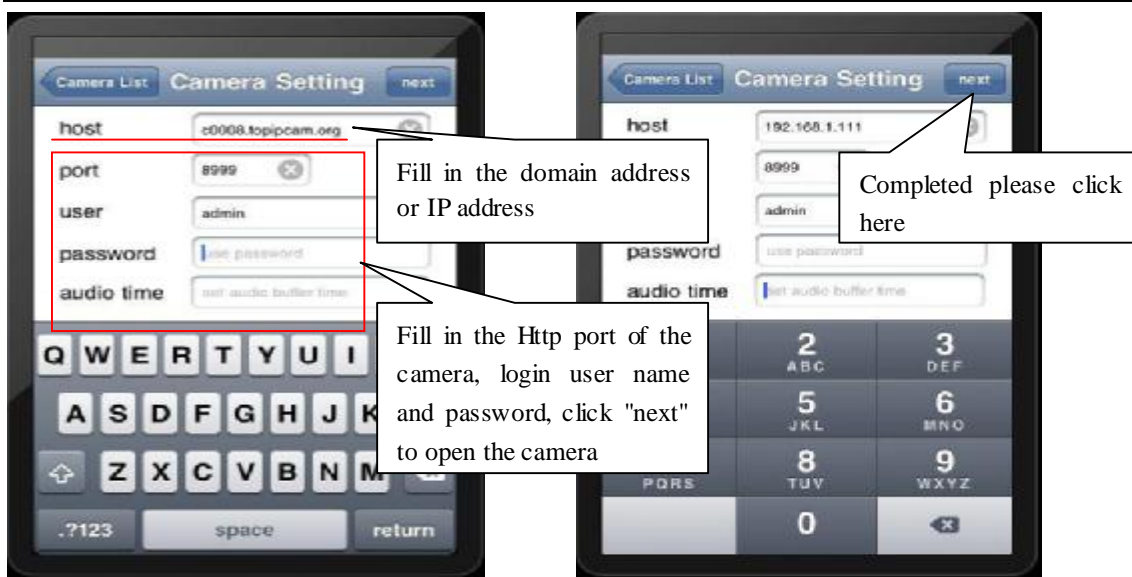
System requirements: Requires iOS 4.2 or above,

You can download the genuine software (ipcamera.app) form the App Store:

<http://itunes.apple.com/cn/app/reecam/id479468959?mt=8>

- Software operating process is as follows:





# 7 Other setting

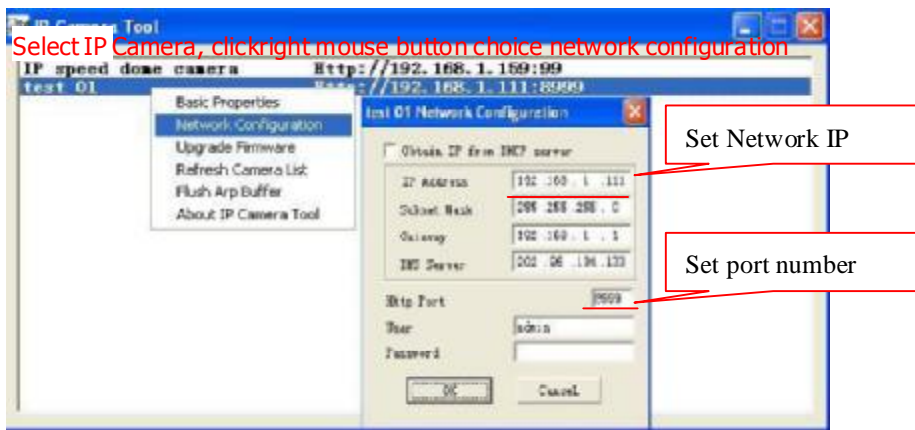
## 7.1 Network Setting

### 7.1.1 Basic Network Settings

If the router that the IP camera connect has DHCP function, you can choice “Obtain IP from DHCP Server”else fill in the network parameters manually.

**Http Port:** In most cases, you can leave this value as 80, however, if your Internet Service Provider blocks this port, you may switch to another port number such as, 85, 8080, 8888, 9000 Etc. (Range from 0 to 65535, pay attention to the same segment of multiple devices must set up different port. The port t can’t have any conflict with other software or equipment

- a. Search tools modification in LAN



- b. "For administrator" **For Administrator** "Basic network setting" **Basic Network Settings** -Change the port

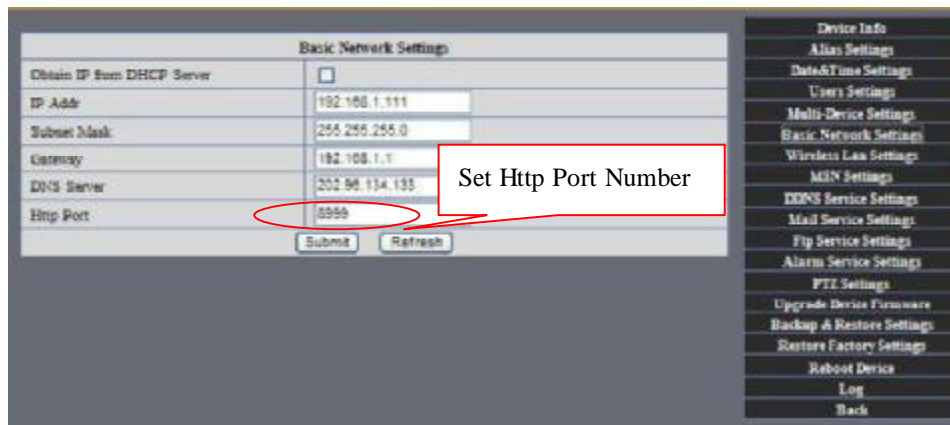


Figure52

- **7.12 WIFI Setting**

1) Please enter the wireless net setting page of the wireless Router to find out SSID, Channel(less than 10), Encryption Authentication as below:



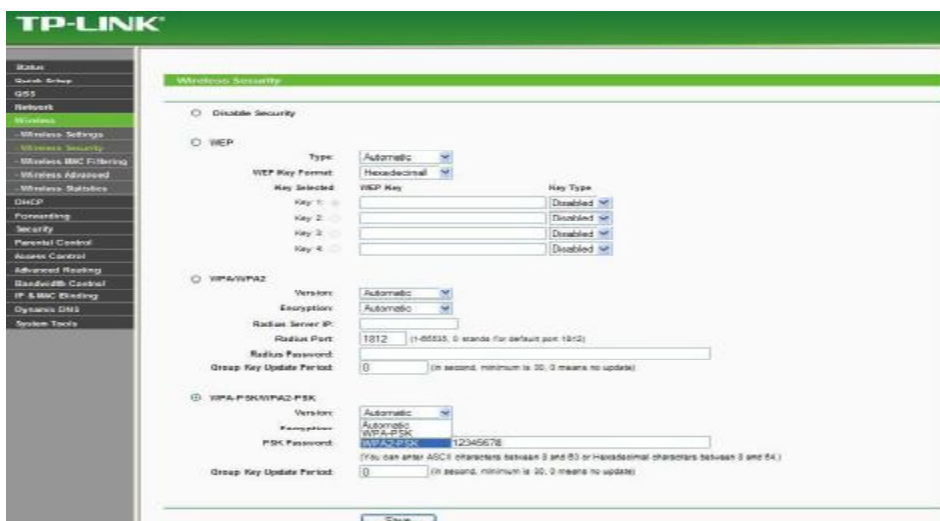
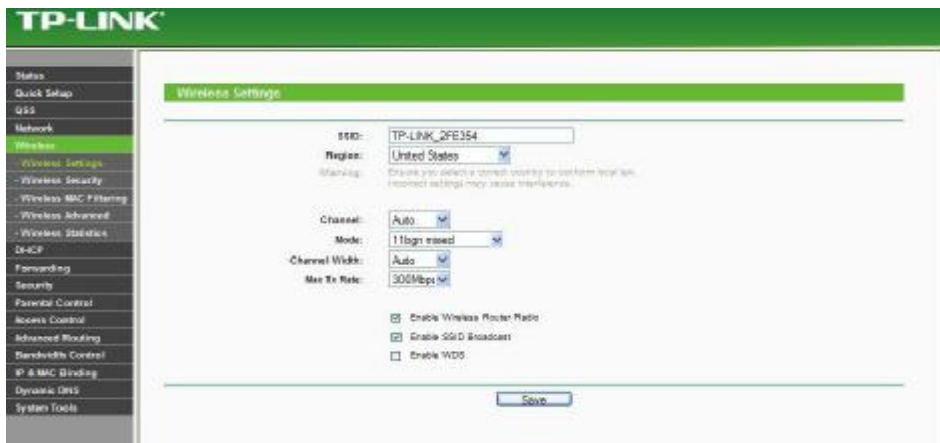
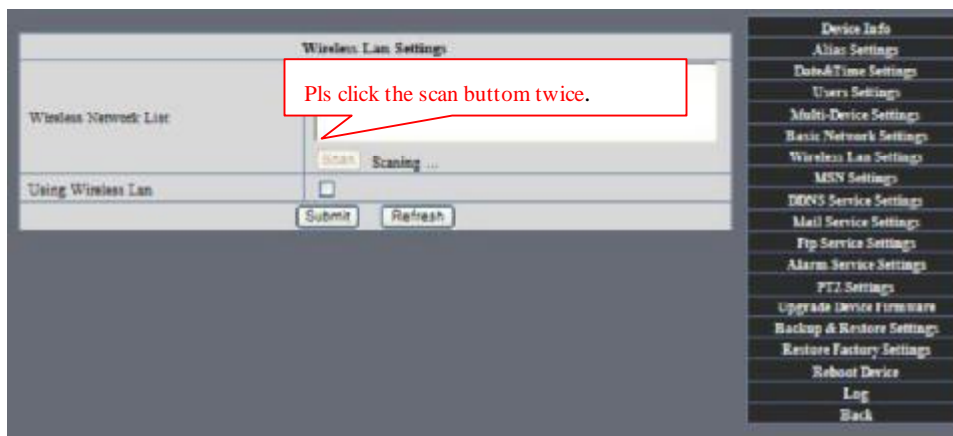


Figure 54

As Administrator to Login camera, open wireless LAN Settings page, fill in every Setting (ensure keep the same as router's ), and then pulled out of the cable, wireless network function can be used. For example: as shown in belows



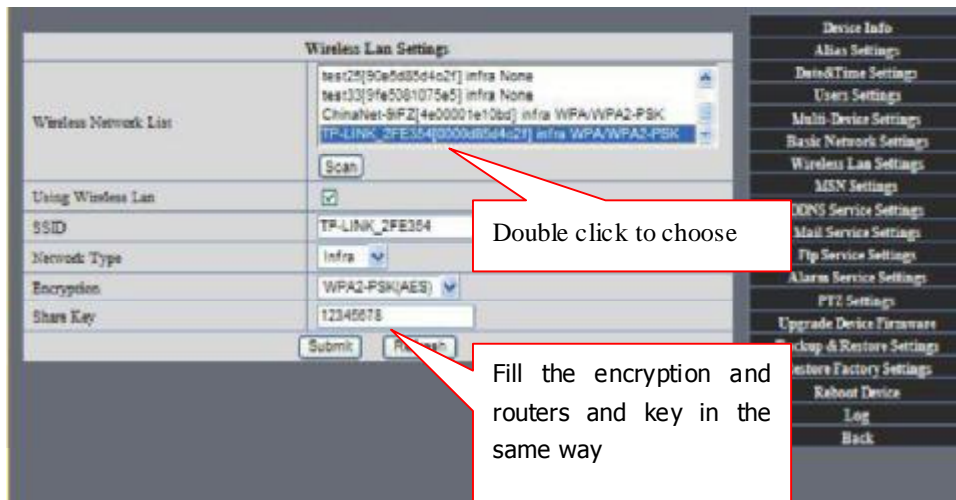
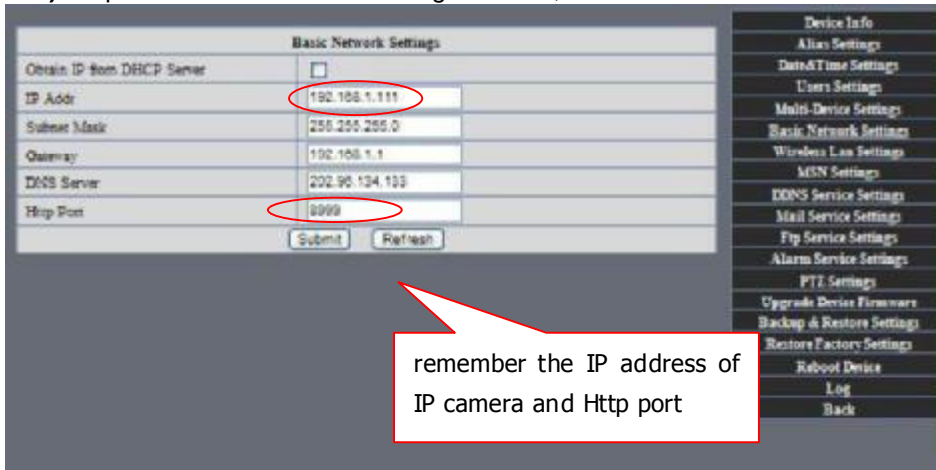


Figure 56

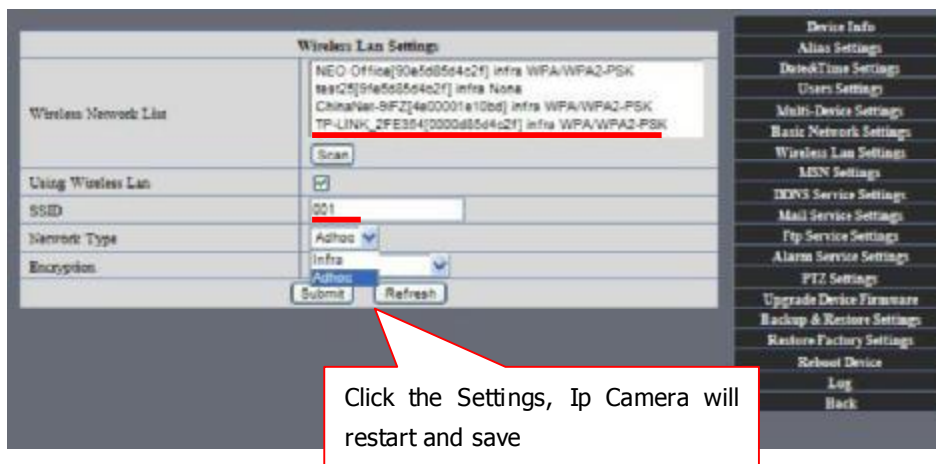
● 7.13 Adhoc point to point Wireless connection Setting

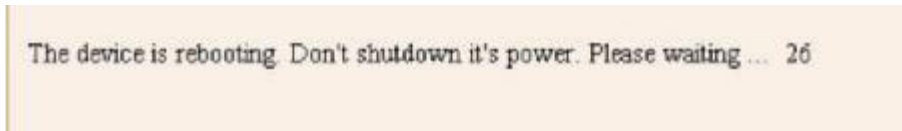
1) Open the basic network setting interface, check the device status



Picture 57

2) Open the wireless lan setting interface, choose Adhoc for network type, you can define SSID such as 001





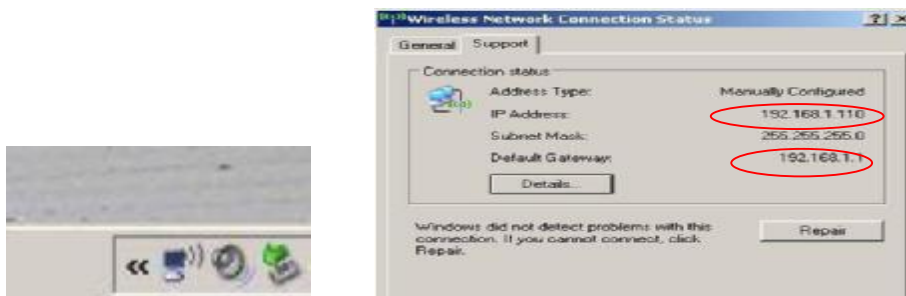
Picture 58

3) Unplug the RJ45 from IPcamera .Use laptop or other devices which are with wifi function( include smart phone,ipad and so on) searching the SSID you defined on process 2,then make a connection.



Picture 59

• Click wireless network and check the link status of ip camera. Please note IP address of your connected laptop must be the subset of your ip camera .if not, please reset the ip address of your laptop manually.



Picture 60

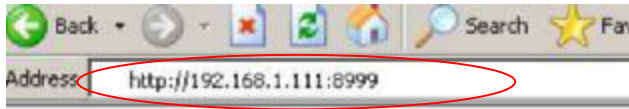
4) Now we can use the ip camera tool or enter ip address of camera directly in browser blank to visit

1. visit by ip camera tool :

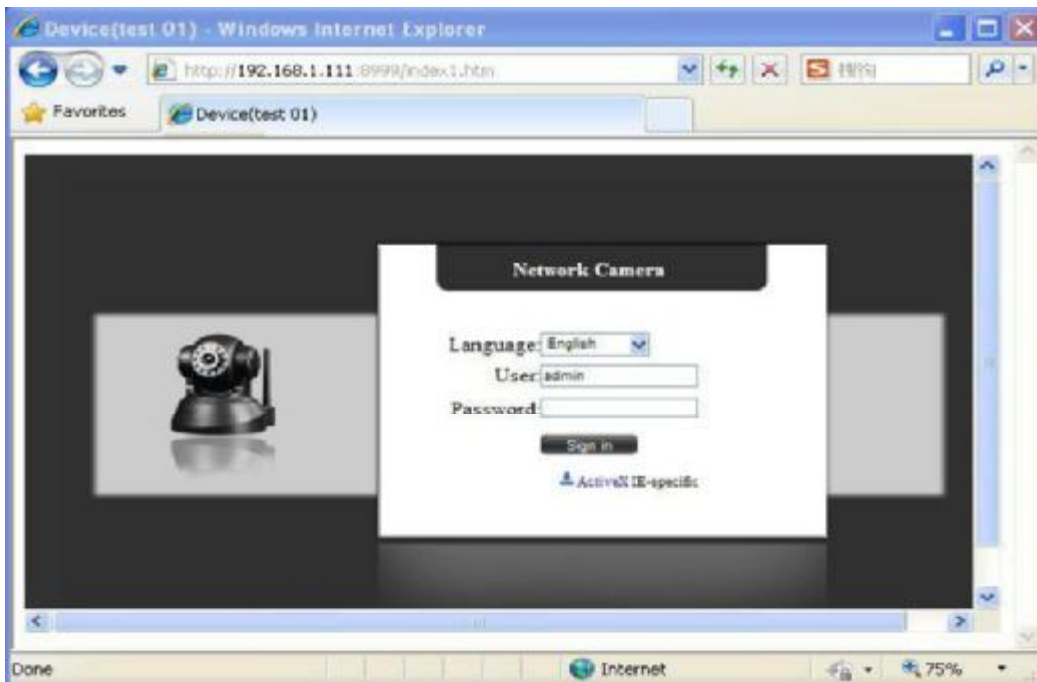


Picture 61

2: Enter ip address in the browser

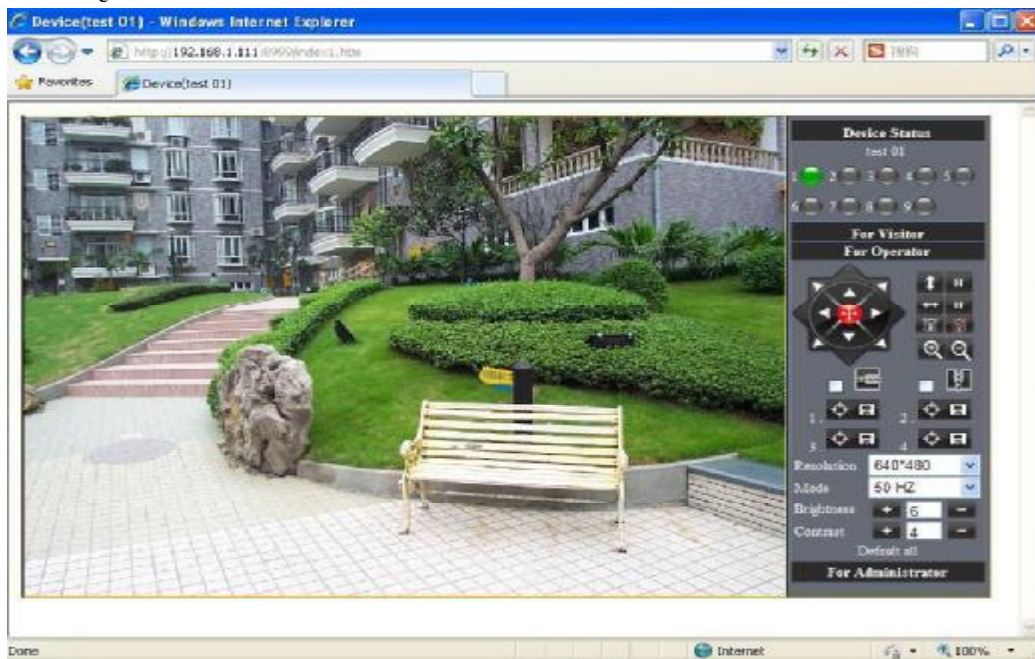


Enter user name and password in the login interface



Picture 62

Click "Sign in" and visit

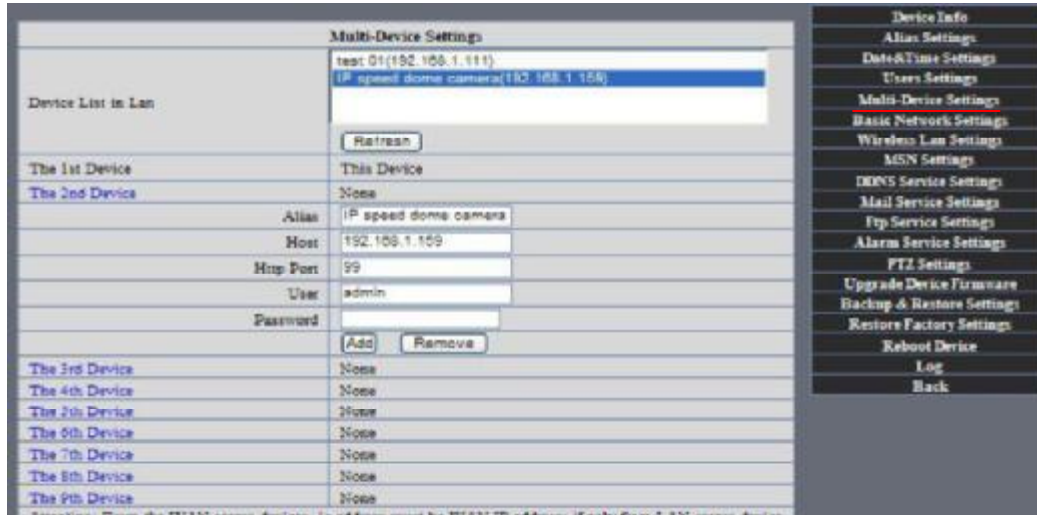


Picture 63

## 7.2 Multi-Device Settings

- Add cameras in LAN

In the Multi-Device Settings page, you can see all devices searched in LAN. The 1st Device is this device in default. You can add more cameras list in LAN for monitoring. This Web software supports up to 9 IP Cameras online simultaneously. Click “The 2ND Device” and Double click the item in the “Device List in LAN”, Alias、Host and Http Port will fill in automatically. Enter the correct username and password then click “add”. Add more cameras in the same way. At last, please don’t forget the “setting” Button



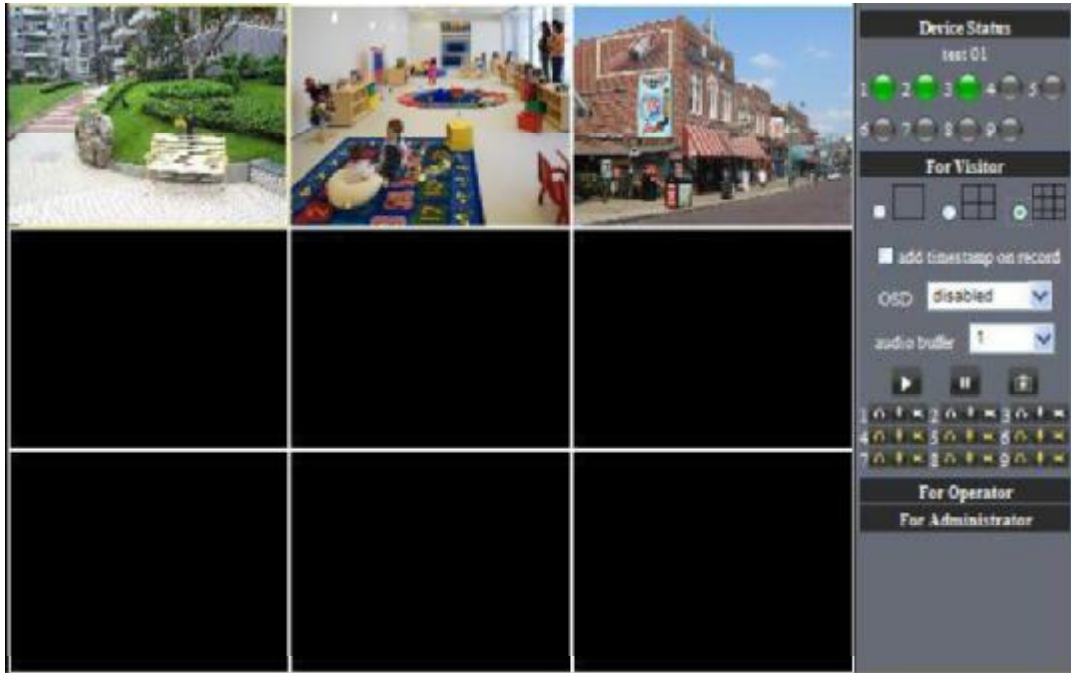
Picture 64

- Add cameras in the Internet

Firstly, make sure the camera added can access in the Internet with the IP address or DDNS domain. Like this: <http://219.113.200.166:9999> or <http://IPcam.dyndns.org:9999>. You can enter the Host:: 219.113.200.166 **Http port:** 9999 or Host:: IPcam.dyndns.org **Http port:** 9999. Enter the correct username and password then click “add”. Add more cameras in the same way.



Picture 65



Picture 66

### 7.3 MSN Settings

Fill in your MSN account and password, then add account which need to receive IPCAM'S ip address to IPCAM'S MSN List (Picture 67),click submit then you'd better restart IP camera. After it ,login your MSN to add IPCAM's MSN account to MSN List that you can receive IPCAM's ip address.



Picture 67

First login and click "add contacts " choose Add Contact ,then fill IPCAM's MSN account in "instant messaging address" ,click next then send offers.



Figure68

Next:

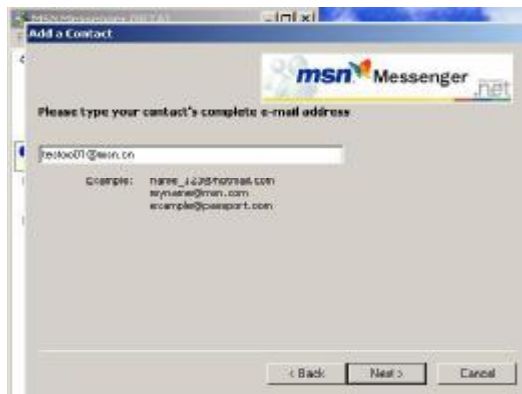


Figure69

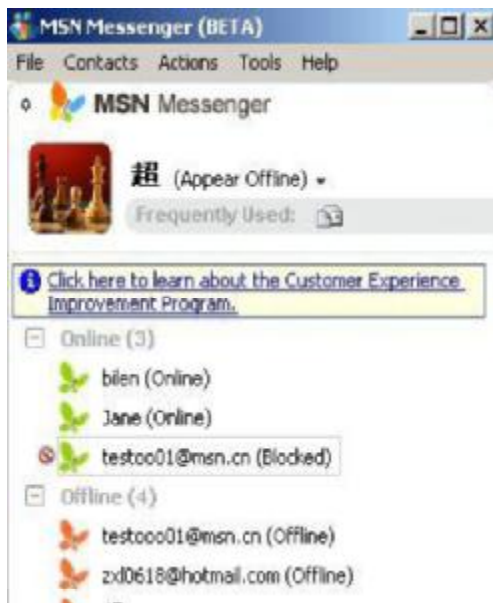
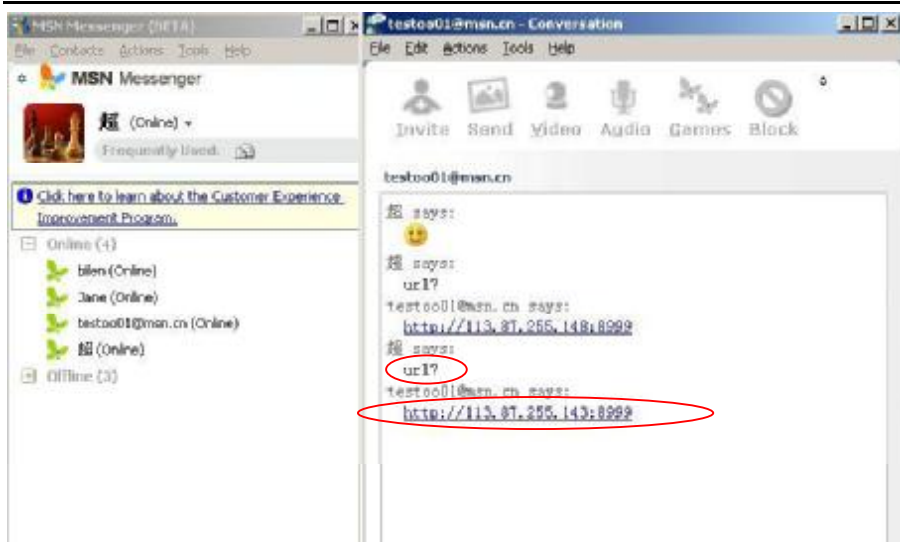


Figure70

When IPCAM's MSN account shows online you can chat with it, input path command "url?" camera account will show its IP address in chatting box promptly as below :



Picture 71

You can input the IP address to browser then can browse ip camera as below:



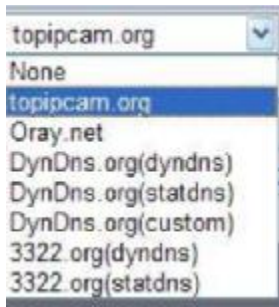
Figure72

**Attention:**You should fill MSN account in IPCAM first.

## 7.4 DDNS Service Settings

DDNS Service: The system supports protocols from some DDNS providers: Dyndns.org. System support DDNS ,such as topipcam.org, peanut shell, 3322.org, DynDNS provided IP.





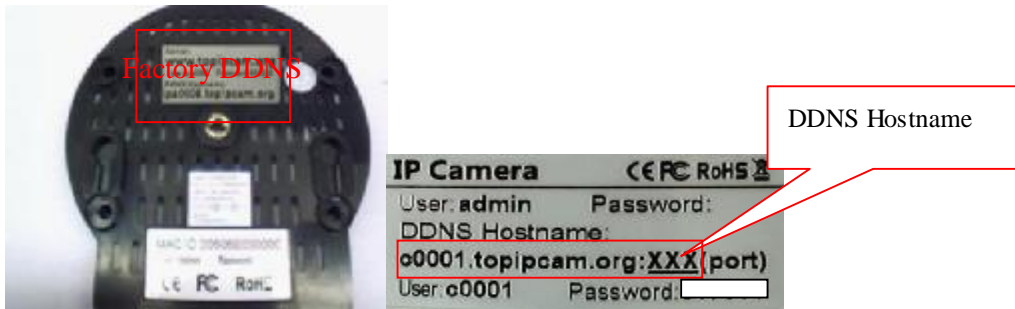
User and Password: the user name and password used when applying for the domain name.. (details: 4.3.2)

DDNS Host: the Domain Name

### 7.4.1 Factory DDNS

Device had distributed one DDNS to every product, which was stucked the bottom of the product. Such as:

manufacturer had already give every device a DDNS address which is unique. Users only need to fill in this DDNS IP ADDRESS and port in the browser, then they can monitor remote IP camera



Picture 74 Factory DDNS

**Note:** When use the domain name access to the camera and UPNP is not successful, you must set port mapping function on routers.

### 7.4.2 The third part DDNS

Users can use not only Factory DDNS, but also can use third part DDNS System. Such as domain name [www.dyndns.org](http://www.dyndns.org). The only thing the user need to do is to apply a free DDNS and then fill in “set box” as below. Save this setting and this DDNS can be used.

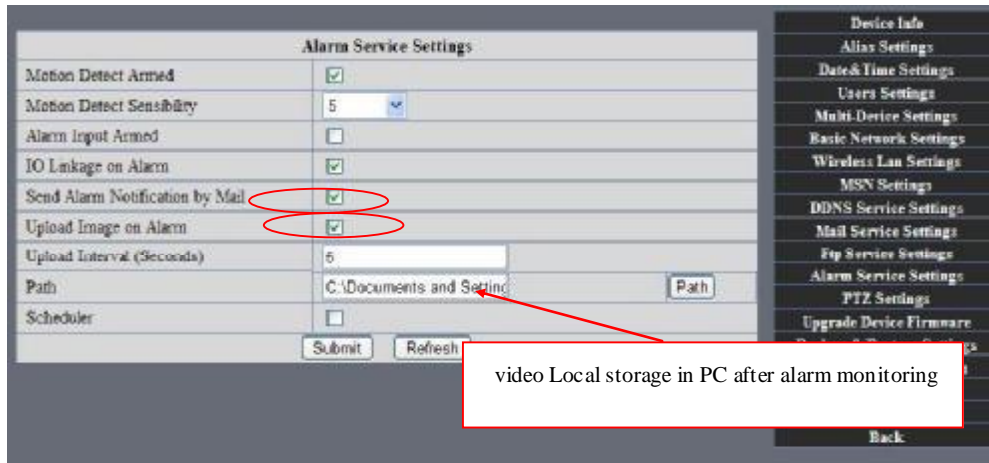


Note: the third party domain name is the realization of analytical way, input the domain in the browser, it will keep this string of characters. If the port of the device isn't 80, then need to add colon and port number .For example: <http://well888.dyndns.org:8999>

## 7.5 Mail and FTP Service

1) Configure the E-mail box to receive and send mails. The E-mail box is used for receiving the images sent after alarm and the system IP address after successful dial-up..

Note: When Alarm Service Settings —> Send Mail on Alarm is check, the Mail Service takes effect.



Picture 76

Configure the E-mail box to receive and send mails. The E-mail box is used for receiving the images sent after alarm and the system IP address after successful dial-up.

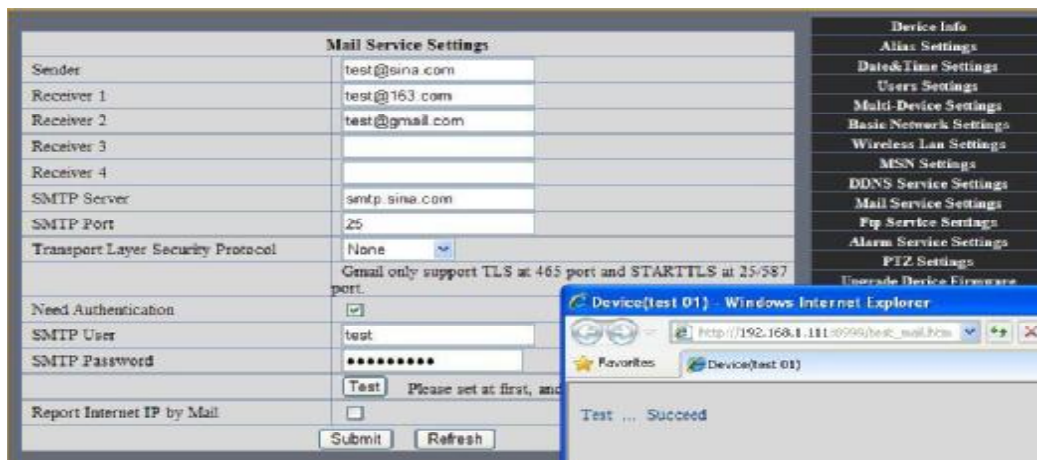
**Sender:** This device use the sender mailbox to send mails.

**Receiver:** To receive the mail from the Sender. You can set up to 4 receiver mailbox.

**SMTP Server:** the SMTP server for the sender mailbox

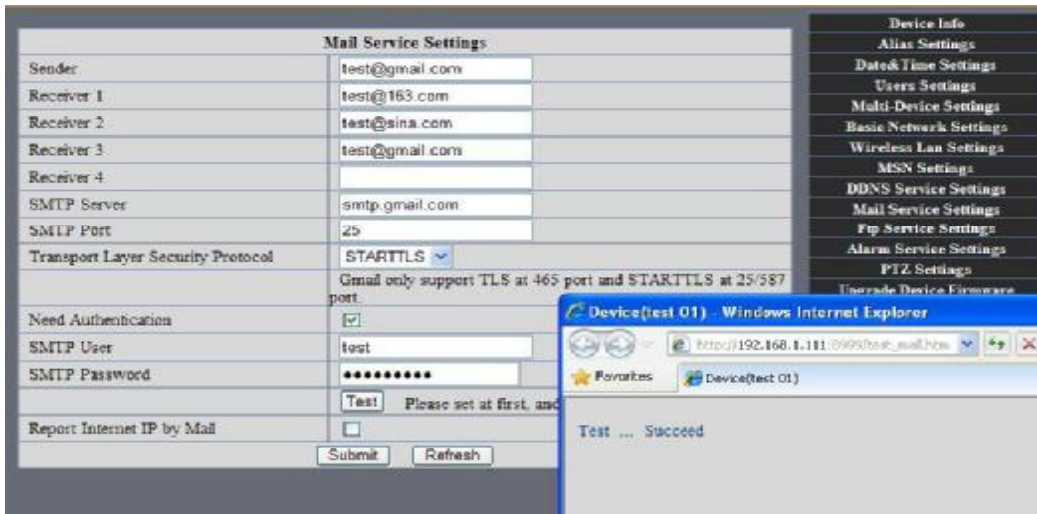
**Need Authentication:** if the sender mailbox need authentication, you should check it then input the SMTP username & Password.

**Mail test:** Please set the Mail parameter and click "Submit" first. There are Mail test result.



Picture 77

**Gmail also set as the same:** It only needs you to fill in correct SMTP Sever address, user and password.



Picture 78

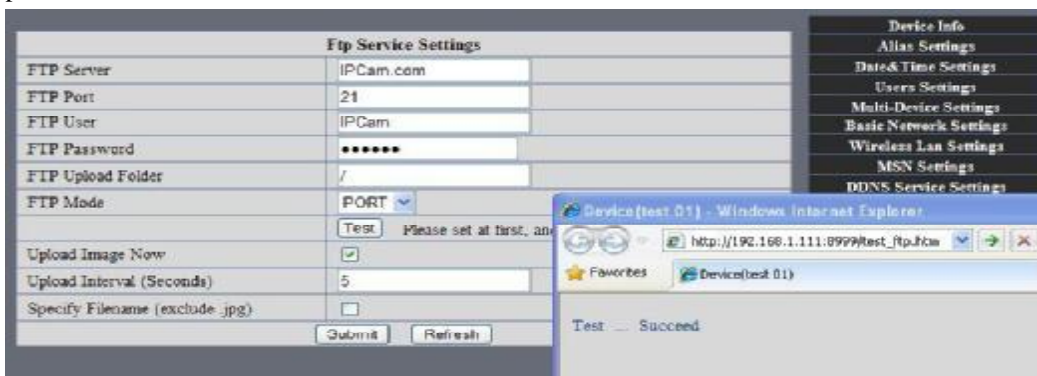
Mail notes Internet IP address: In this option, When Internet IP and port have changed, IP Will be sent via mail.

- 1 Can not connect to the server
- 2 Network Error. Please try later
- 3 Server Error
- 4 Incorrect user or password
- 5 The sender is denied by the server. Maybe the server need to authenticatore the user, please check it and try again。
- 6 The receiver is denied by the server. Maybe because of the anti-spam privacy of the server
- 7 The message is denied by the server. Maybe because of the anti-spam privacy of the server
- 8 The server does not support the authentication mode used by the device

**Report Internet IP by Mail:** When ipcam port or Internet IP changed, it will send the internet IP by mail.(for example: IPCAM 's url is <http://119.123.207.96:9002>). Make sure the port is map to the router correctly by UPNP or Virtual Map function.

2) FTP Server use and settings

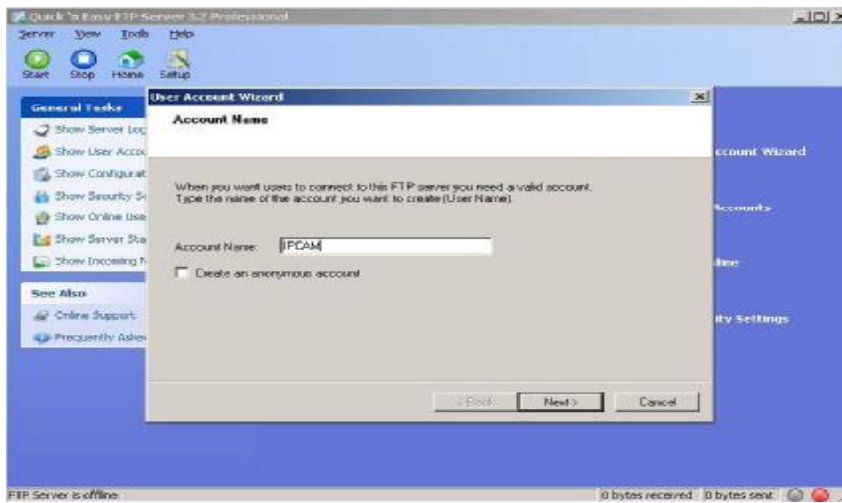
- If you already have an FTP Server (ipcam.com) and email ipcam ,you can fill the parameters as below:



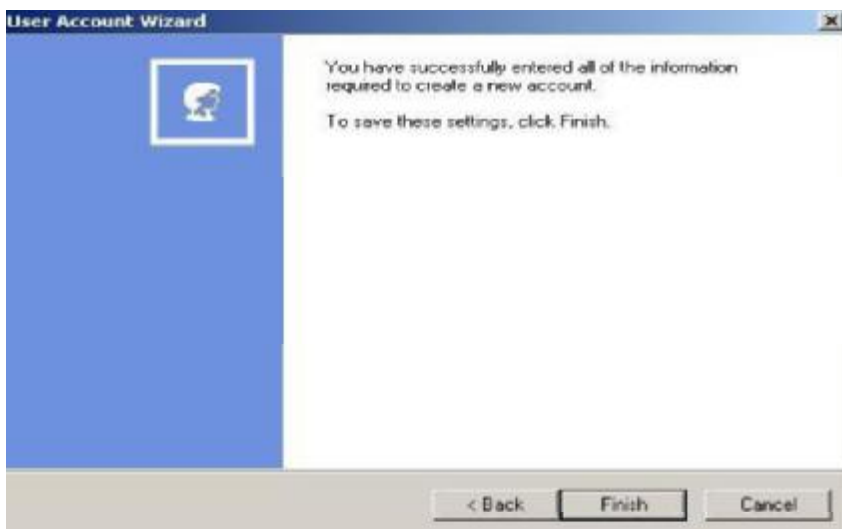
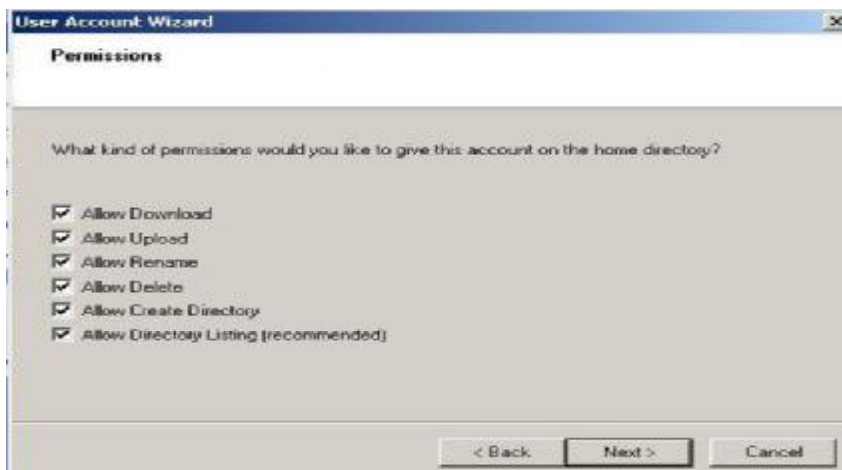
Picture 79

• FTP Server of LAN as below:

1. Create an account



2. Step by step setting until finish it. !

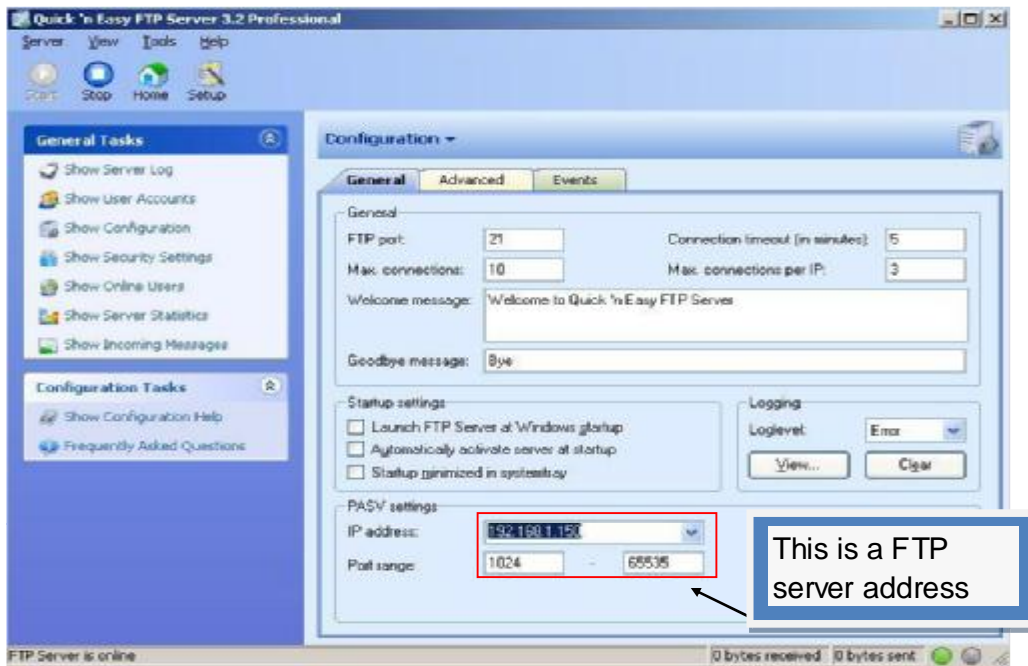


Picture 82

3. Start Server

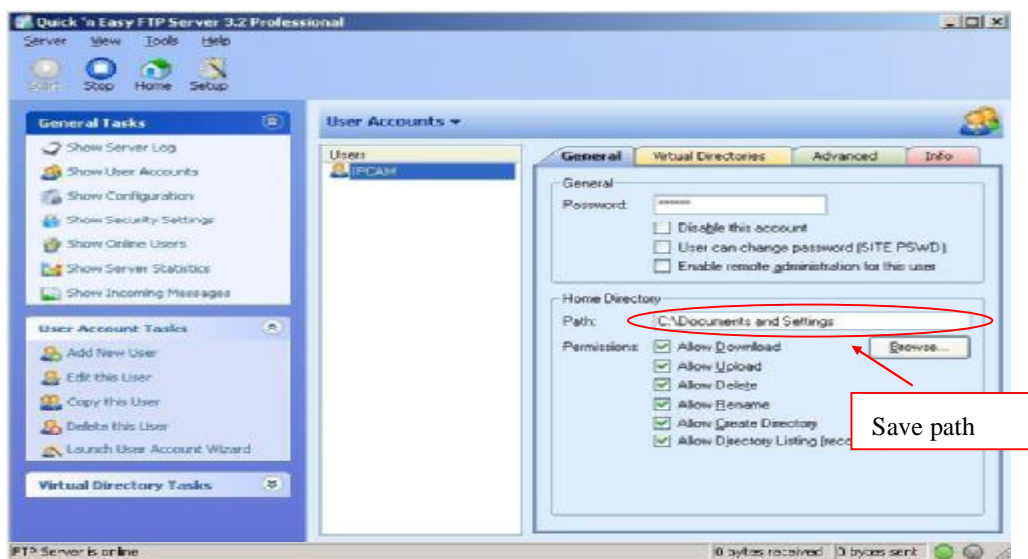


Continue to finish it :



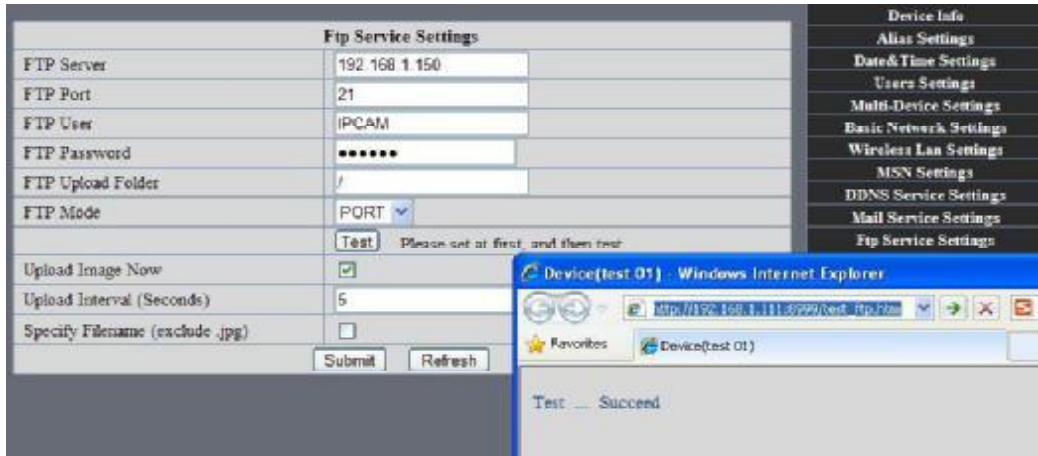
Picture 84

4. IPCAM'S account can be used.



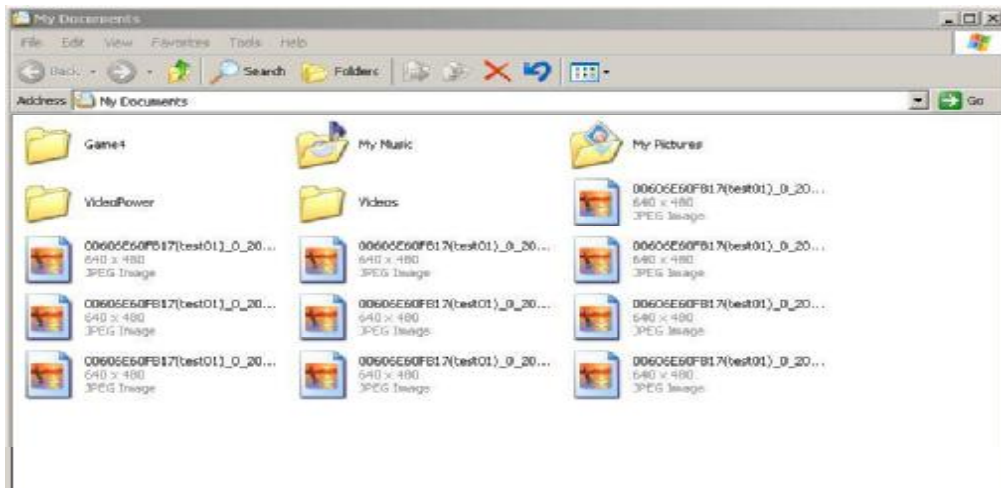
Picture 85

5. IP camera's FTP Server set like this



Picture 86

6. Set up and complete testing is successful, when it alarms, IP camera will upload pictures to the FTP server Settings of main directory path (as shown )



Picture 87

**FTP Server:** the FTP server address.

**FTP port:** the port usually is 21

**FTP Mode:** support standard(POST) mode and passive(PASV) mode.

**Upload Image Now:** it will upload image now when checkbox is not checked. When checked, you can input upload interval(Seconds)

## 7.6 Motion Detection

.Enter Alarm Service Settings page to configure Motion Detection function

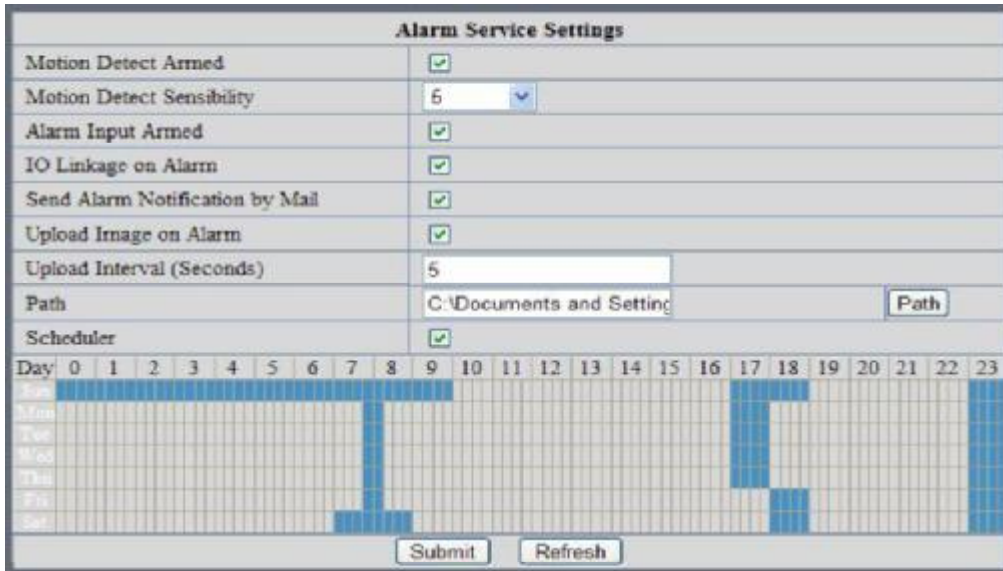
Motion Detect Armed

Each alarm triggers in the protection of time, the device will take various measures to alarm

- IO linkage alarm output: relay closure, external alarm device began to alarm
- Send E-mail alarm informatio
- Transmit pictures to the FTP server, and can set the time interval of sending pictures;

1) Alarm time Settings

Only in the alarm period, detection device to alarm will only have alarm action. All the time (not check the schedule) also can alarm within specified time. For the specified time alarm, firstly need to set up the system time, time zone, and then to choose period of alarm in the state of alarm setting, as shown in Picture 19.



Picture88 Alarm of time Settings interface

**Motion Detect Armed**

When you enable motion detect armed, the camera can be triggered to send email alerts and record images. In the camera monitoring page, the green icon turn to red and an alert sound you will hear,



**Motion Detect Sensibility**

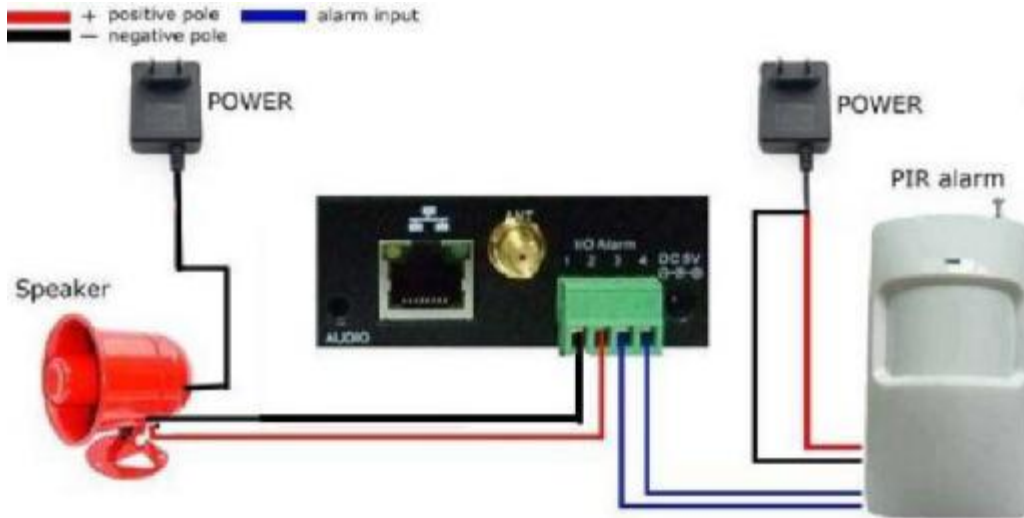
You can choose from low to high 10 level alarm sensitivity. The greater the number, the higher the sensitivity!

**Alarm Input Armed**



**I/O PINS:**1) Output(+5V) 2) Output 3) Alarm input 4) Input (GND)

**Input Pins:** The input pins can be used for 1-way external sensor input(pin3 and pin4). For example, you may connect a Person Infrared Sensor (PIR) to it for motion detection. When external sensor triggered, IPCAM can be programmed to send an email with picture or control the internal relay output.



Picture89

**IO Linkage on Alarm**

Enable IO linkage on alarm, Pin1 will output +5V when alarm triggered, and output LOW when alarm release automatically.



Switch on/off buttons control Pin1 output manually.

**Send Mail on Alarm**

Sent picture and mail inform to customer's e-mail after alarmed.(firstly you should finish the Mail Service Settings.)

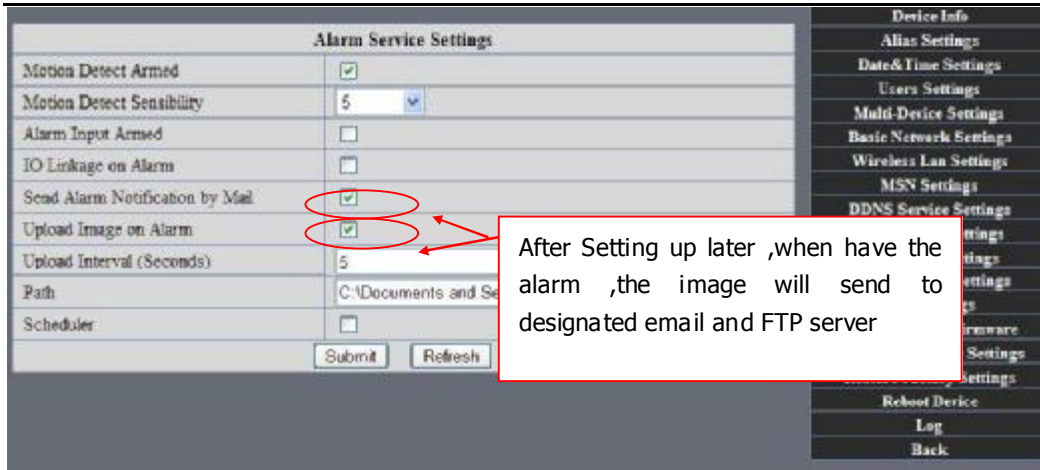


Picture 90

**Upload Image on Alarm**

Enable upload image on alarm and set upload interval(Seconds).

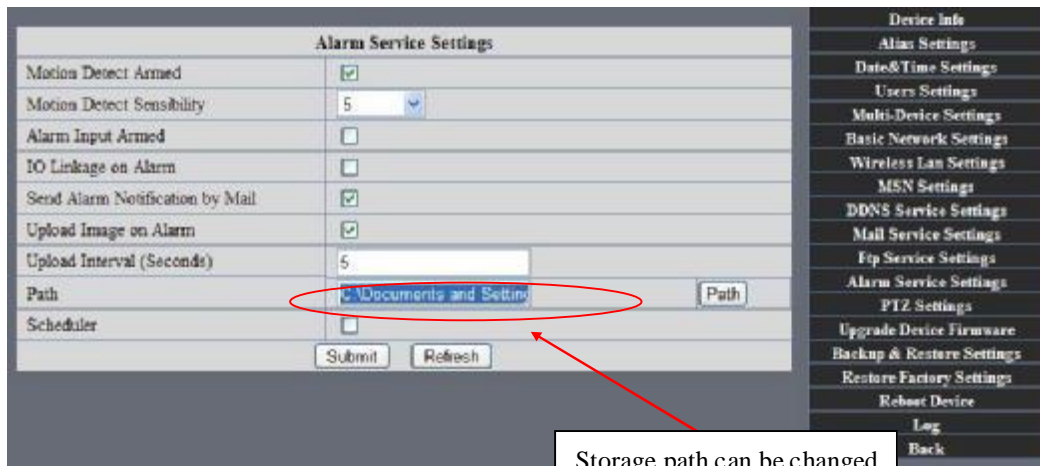




Picture 91

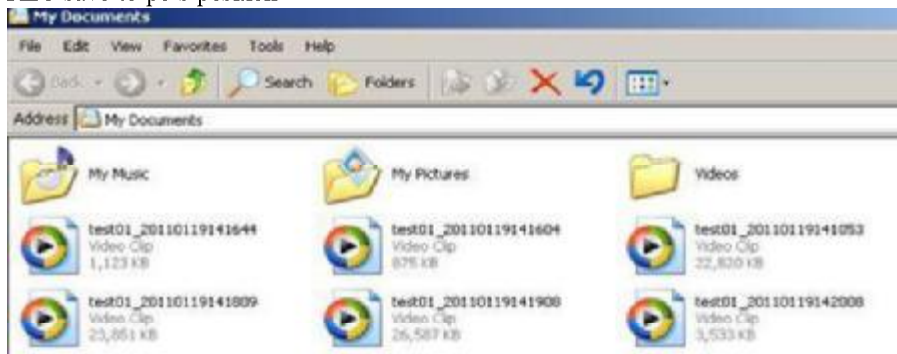
REC automatically and save to PC

When you enable motion detect and open the camera monitoring page on the PC. If there is an alarm triggered, REC will start automatically for several seconds and save to the PC.



Picture 92

REC save to pc's position



Picture 93

## 7.7 IP camera's Time & Date setting and PTZ Setting

If IP camera connected with Internet, it can automatically check the time & date via running NTP Server. And need to choose properly IP camera's Time zone. Otherwise it need PC Time to check IP camera time & Date.

Date&Time Settings	
Device Clock Time	2012年3月22日 6:54:17
Device Clock Timezone	(GMT) Greenwich mean time; London, Lisbon, Casablan ▾
Sync with NTP Server	<input checked="" type="checkbox"/>
Ntp Server	time.nist.gov ▾
Sync with PC Time	<input type="checkbox"/>
<input type="button" value="Submit"/> <input type="button" value="Refresh"/>	

Pre-set and Speed of PT.

PTZ Settings	
Disable Preset	<input type="checkbox"/>
Go Preset on boot	center ▾
PT speed	5 ▾
Upward patrol speed	3 ▾
Downward patrol speed	3 ▾
Leftward patrol speed	3 ▾
Rightward patrol speed	3 ▾
<input type="button" value="Submit"/> <input type="button" value="Refresh"/>	

The huger the Number is, The slower it will be.

## 7.8 UPGRADE DEVICE FIRMWARE

Upgrade Device Firmware			
Upgrade Device Firmware	<input type="text"/>	<input type="button" value="Browse..."/>	<input type="button" value="Submit"/>
Upgrade Device Embedded Web UI	<input type="text"/>	<input type="button" value="Browse..."/>	<input type="button" value="Submit"/>

Picture 96 Firmware upgrade

IP CAMERA has two kinds of programme: One is system firmware, another is application firmware. It can be upgraded separately.

## 7.9 BACKUP AND RESTORE SETTING

Click " Set" in the ' Backup" will lead to a BIN file  , and choose this file to restore setting !

Backup & Restore Settings		
Backup	<input type="button" value="Submit"/>	
Restore	<input type="text"/>	<input type="button" value="Browse..."/> <input type="button" value="Submit"/>

# 8 APPENDIX

## 8.1 REGISTER AND APPLY FOR DDNS SERVICE

1、Users use DDNS management system first time.Users need to apply account to manage and inquire the domain state.

Step1: enter <http://www.dyndns.com/> and **Create Account.**( Fill in Domain Name **.dyndns.org** then Click Add)

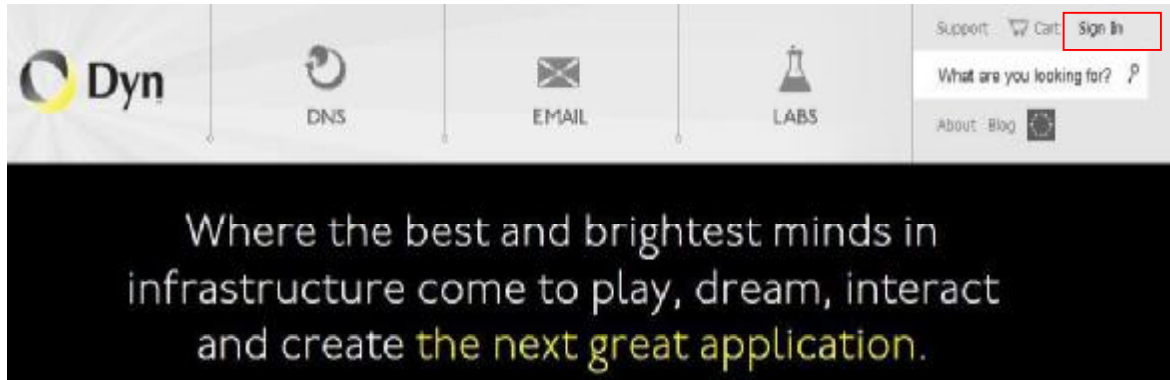


Figure97

Step2: enter your information

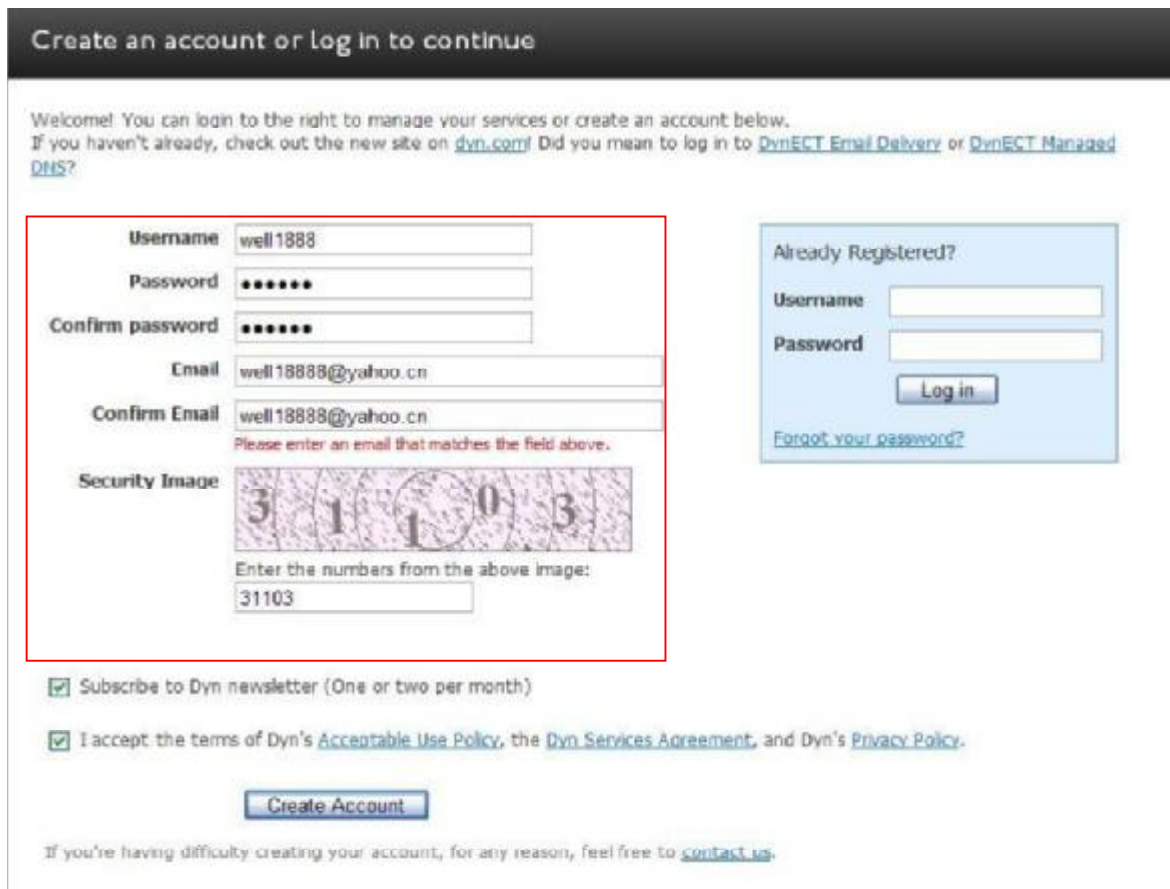


Figure98

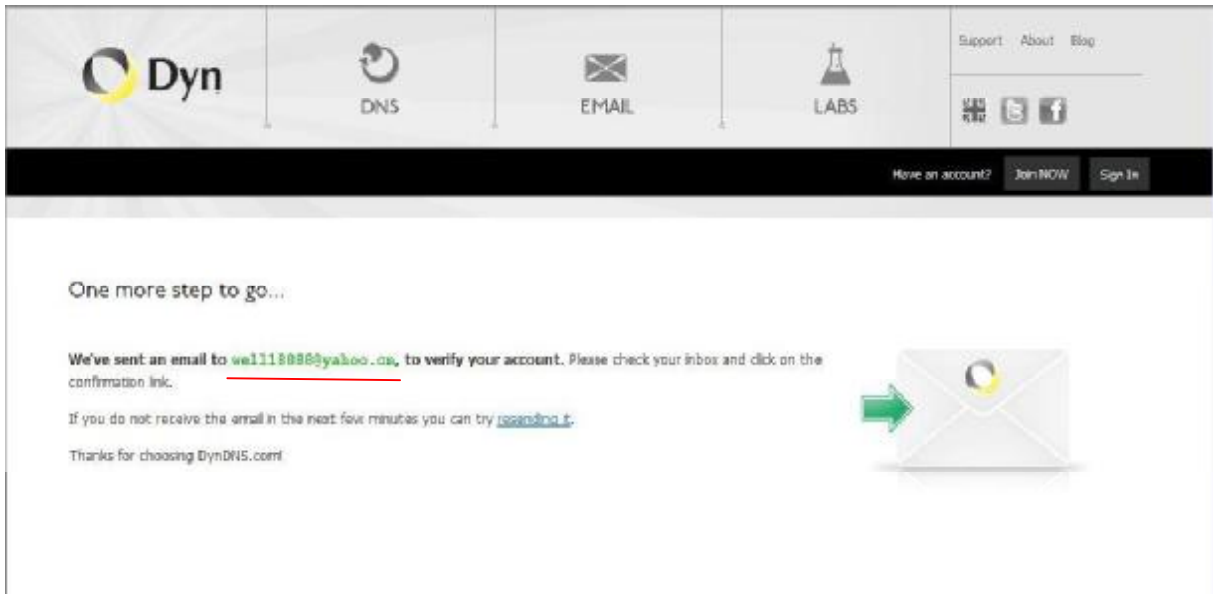


Figure99

**Step3:** After a minute, you will receive an E-mail from **DynDNS Support** and it will give you a confirmation address

(e.g. [https://account.dyn.com/eml/createconf/llLHMZHRje5oF\\_6YXTYv1A](https://account.dyn.com/eml/createconf/llLHMZHRje5oF_6YXTYv1A))

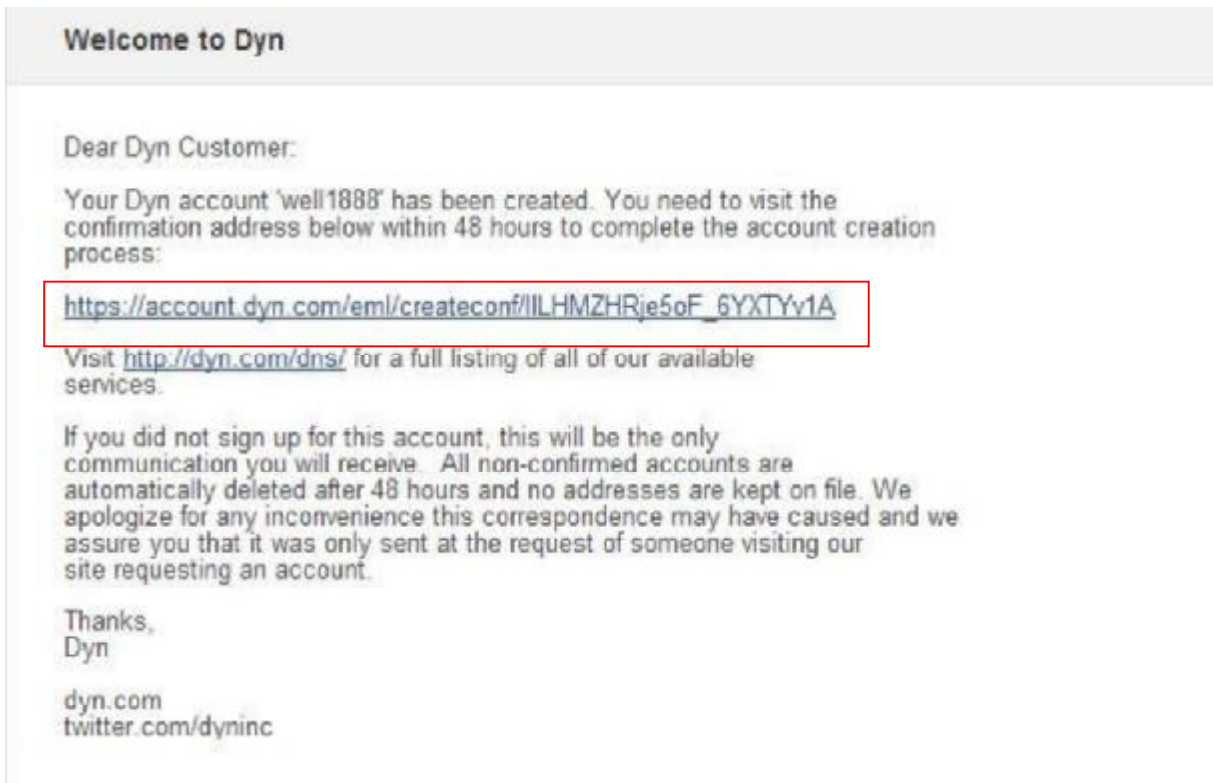


Figure100

**Step4:** Open the link to active your Domain Name as below.Login in your account after it is activated

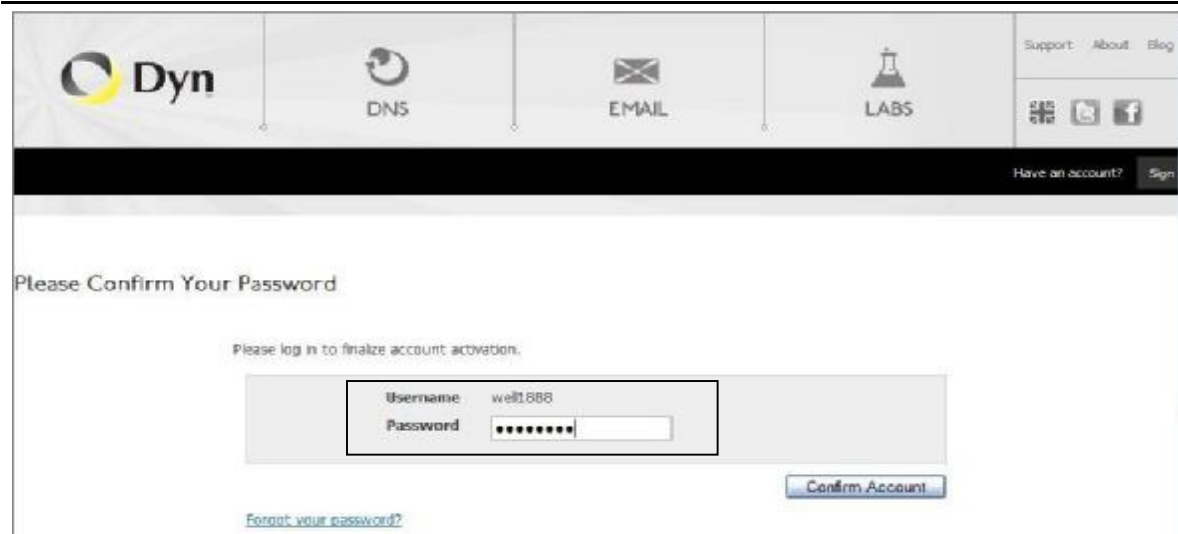


Figure101

**Step5:** Check all the DDNS services,we choose the 14-day-trial

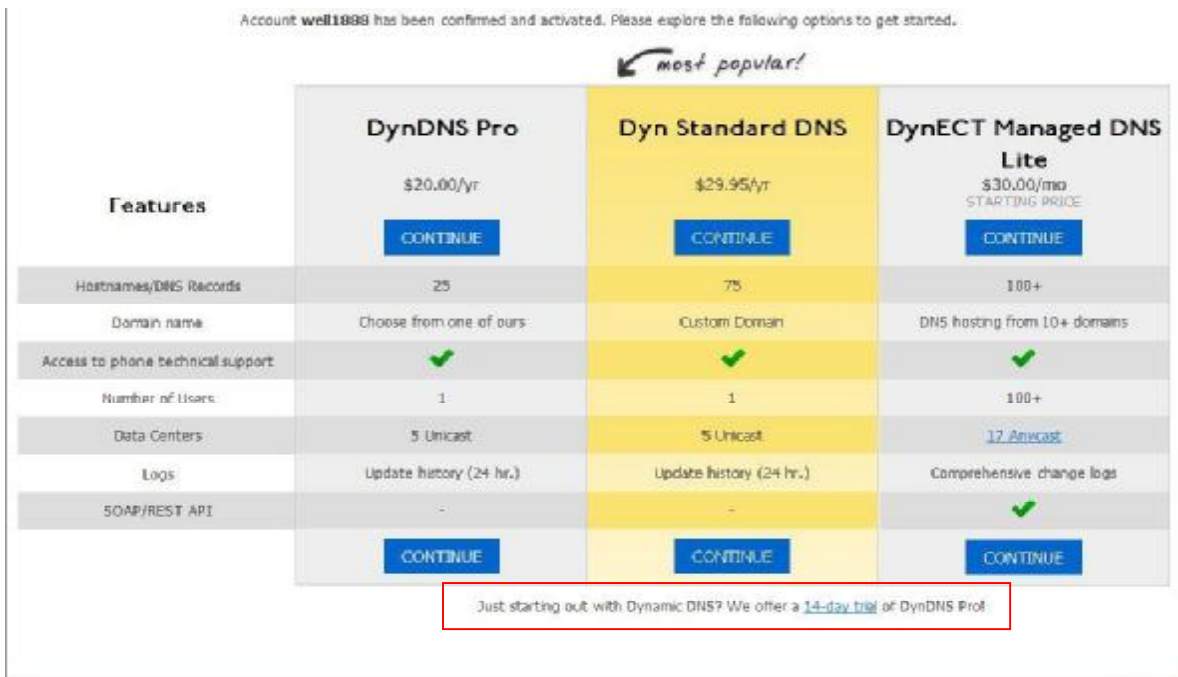


Figure102

**Step6:** Click the link,and user will see as below.



- enter your information

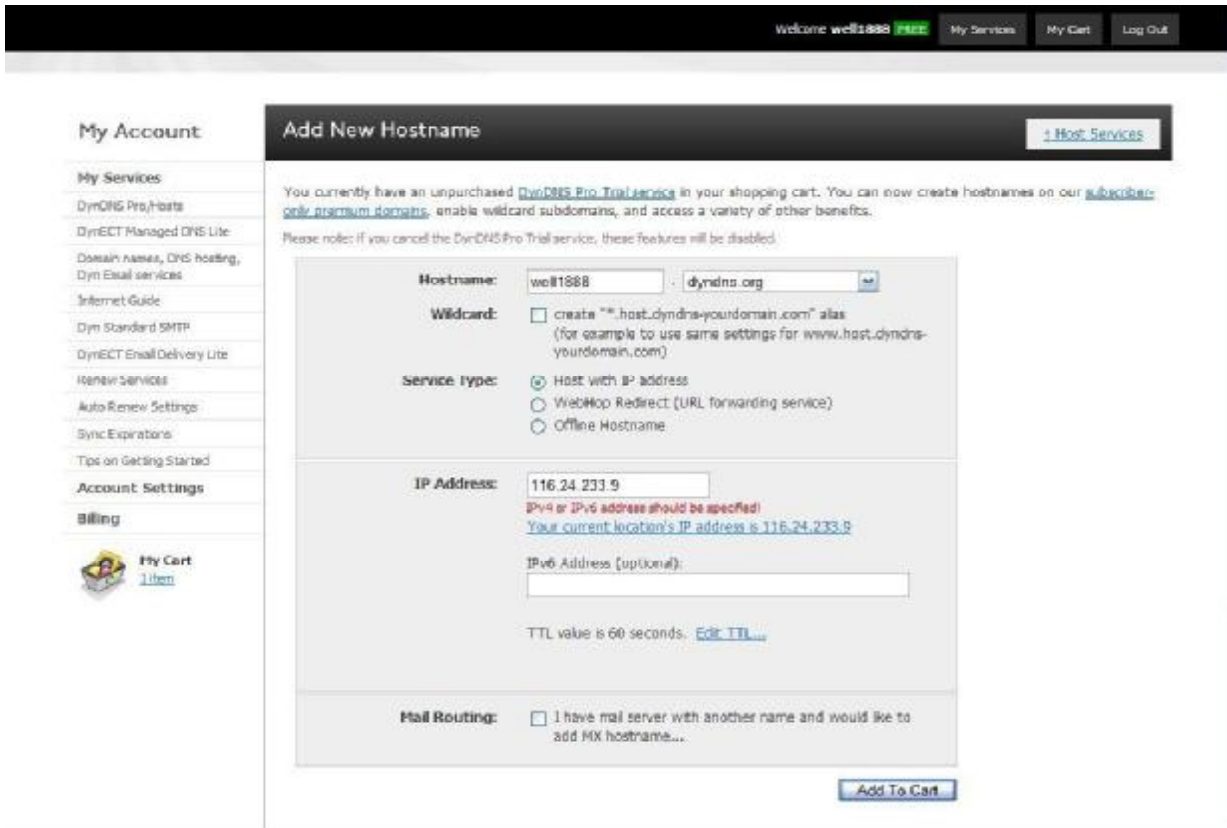


Figure104

**Step7:** Now you obtained a Dynamic Domain Name(Figure 105),and can use it in the **DDNS Service Settings**(details: 7.4)

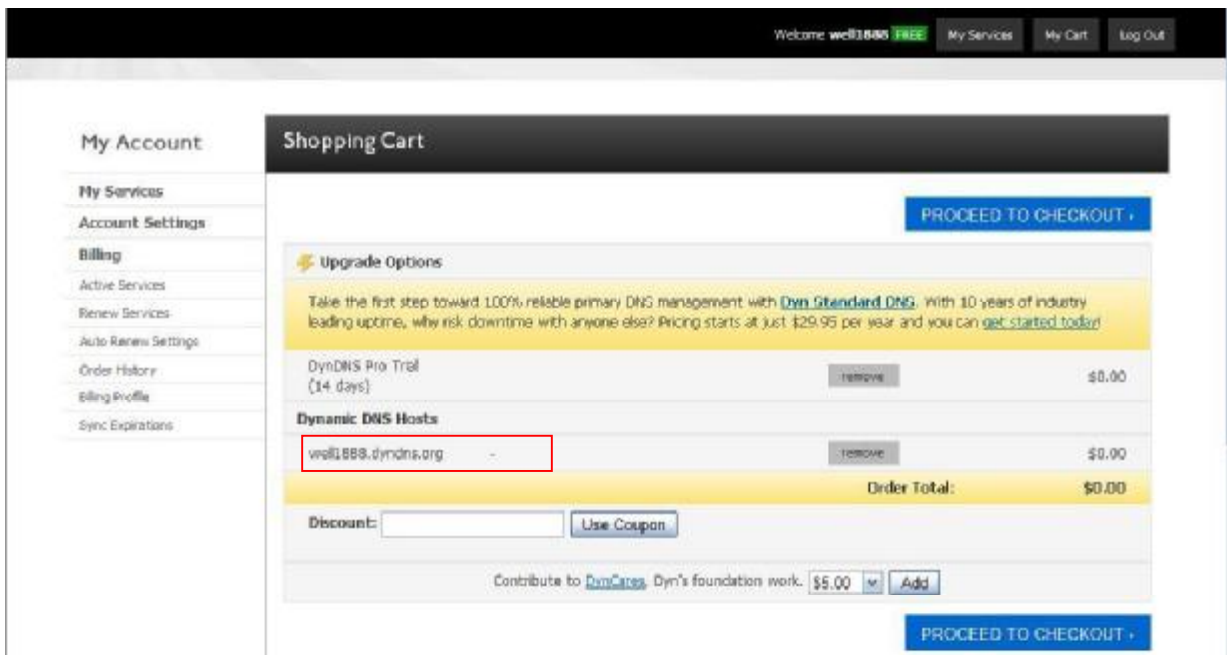


Figure105

2.For DDNS which is applied successfully, you can fill in the IP CAMERA. When set successfully, the status of IP will be shown as blows:



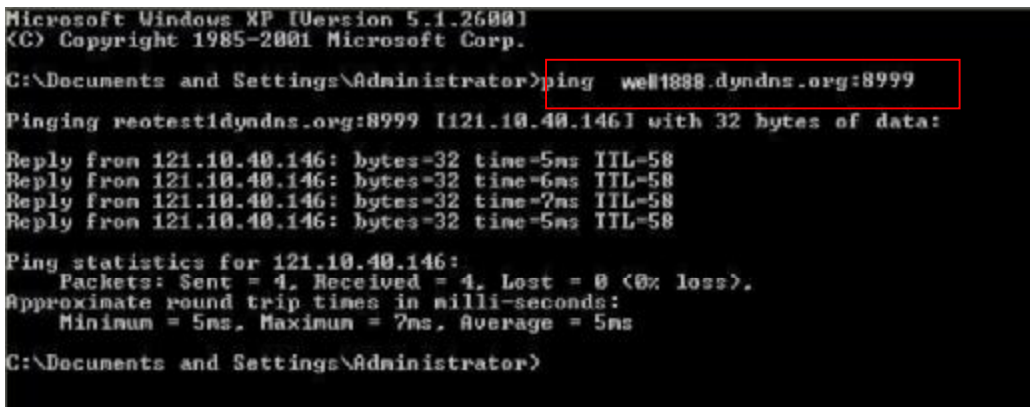
picture 106



picture 107

### 3、 How to set DDNS on line?

The first way: Menu "start"- "run"—> Input CMD, Click "enter". It can check DDNS Status via. As shown below:



Picture 108

Through the PING command, this dynamic domain name can be back in the network response information. It proves that the domain name has been online.

If the domain name update not success! Possible reasons: (1) DDNS parameter is not correct. (2) may cause: DNS address configuration is wrong.

## 8.2 Some special application for IPCAMERA

**IPCam:** Use some grammar parameter control and Use IPCam

**user:** user

**pwd:** password

**pri:** The current access (1: visitors 2:3: operator managers)

**resolution:** Image resolution (8: 320\*240 vga, 32: 640\*480 vga)

**rate:** Image transmission speed and scope 0-23

**brightness:** brightness, 0~255

**contrast:** contrast, 0~6

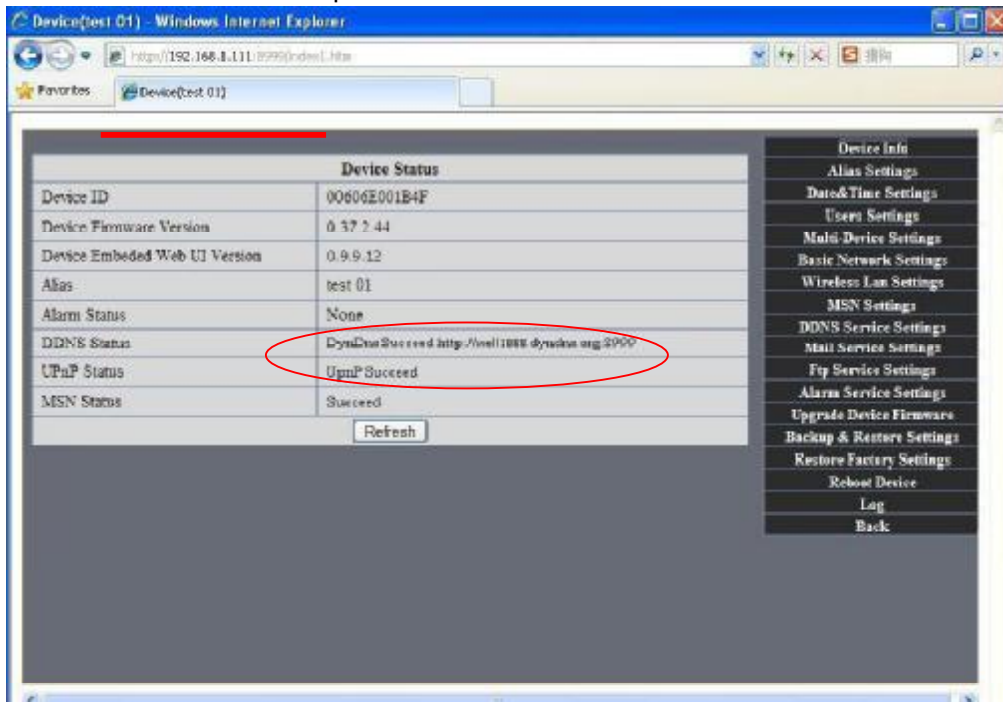
**mode:** Mode, 0:50 hz; For 60 hz; 2: outdoor

**flip:** Flip: rotation, 0: primitive; 1: vertical reverses; 2: horizontal; 3: vertical flip + horizontal

**8.2.1** The flow media player VLC player and mplayer can real-time broadcast ipcamera and send of streaming media format video data.

(Grammar parameters: /videostream.asf?user=&pwd=&resolution=&rate=)

As shown Picture 113 "Ipcam"



Picture 113

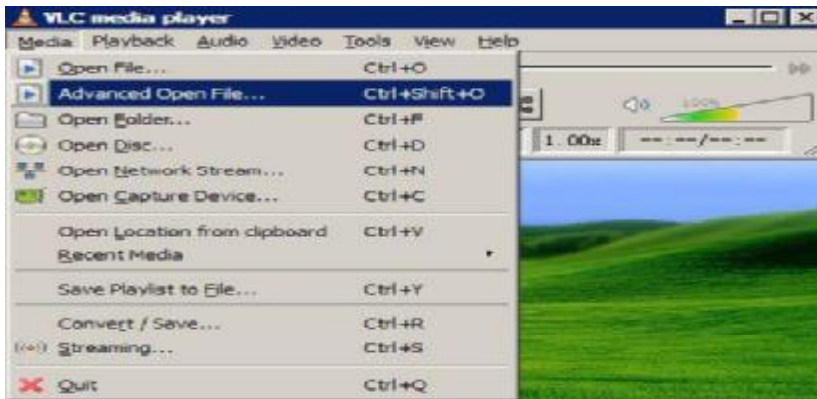


From the following picture, we can view that "Ipcam" local IP address is: <http://192.168.1.111:8999>,  
 WAN IP Address is : <http://well888.dyndns.org:8999>, we can input "Ipcam"'S IP address to  
 open in the player.



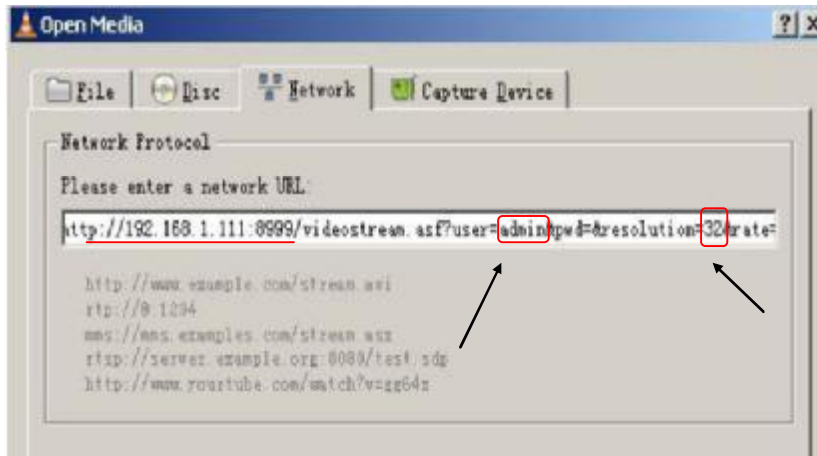
Picture 114

the "CLC media player" open play position:

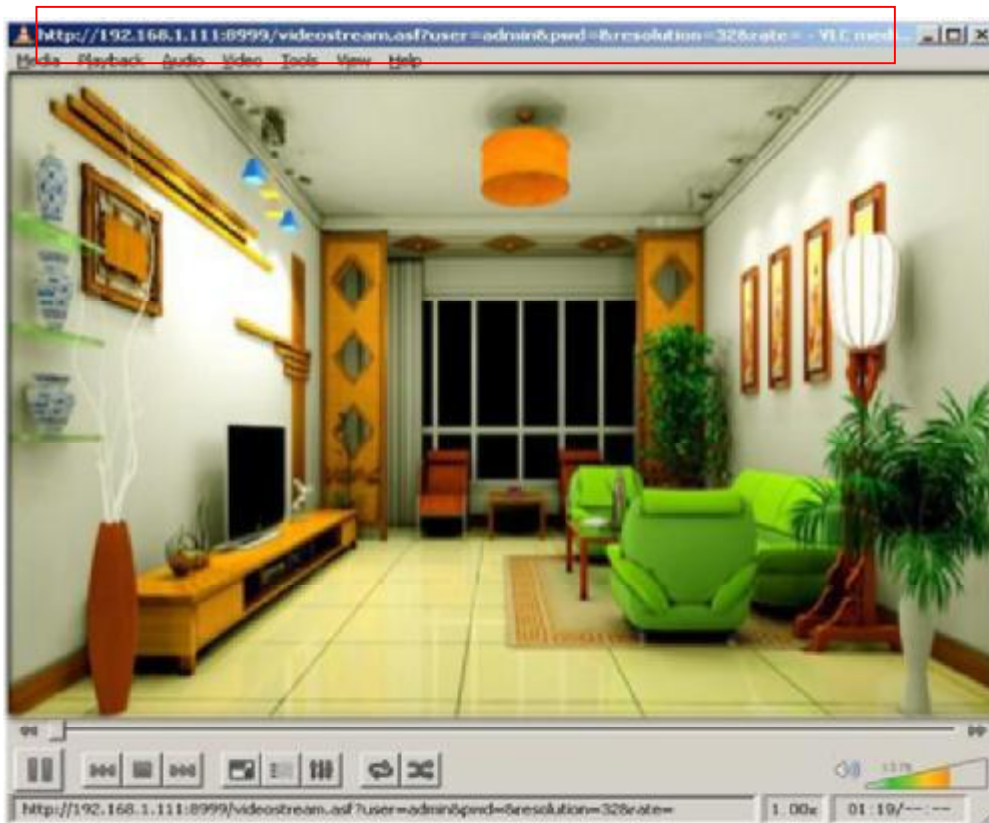


Picture 115

LAN play address;

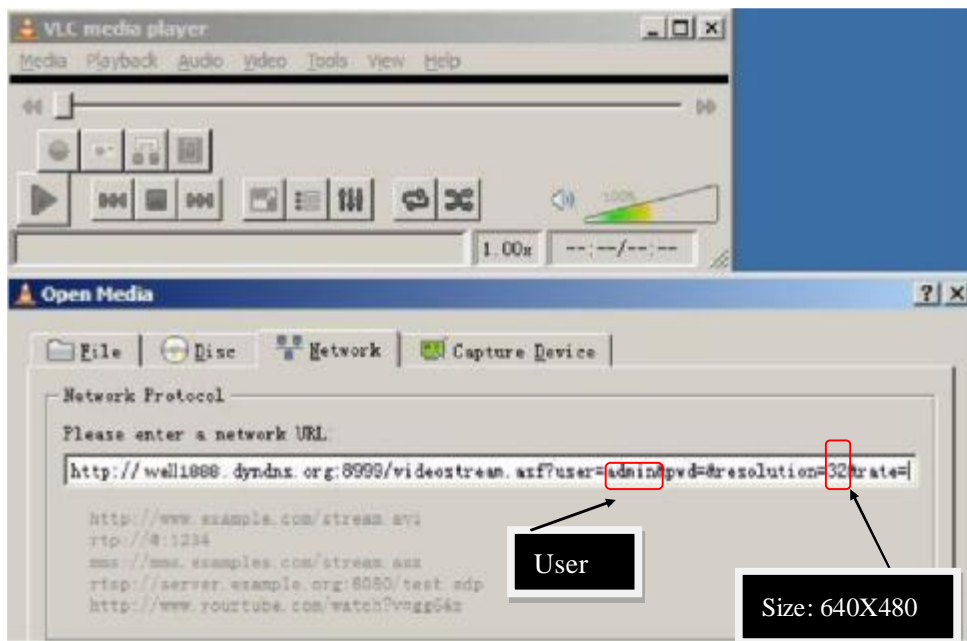


Picture 116



Picture 117

Open the Internet play position:



Picture 118

As shown in the following picture, It can see the ipcamera send video streaming format



Picture 119

### 8.3 Frequently Asked Questions

**Note:** 1) Any question you would meet, please check Network connections firstly.

2) Check the working status revealed by the indicators on the network server, hub, exchange and network card. If abnormal, check the network connections.

#### 8.3.1 I have forgotten the administrator username and/or password.

To reset the administrator username and password, Press and hold down the RESET BUTTON for 5 seconds. Release the power button and the username and password will be reset back to the factory default administrator username and password.

Default administrator username: admin

Default administrator password: No password

#### 8.3.2 IP Address configuration

Check whether IP address of the IP Camera server shares the same subnet as your work station: Click My Computer > Control Panel>Network & Dial-up Connections > LAN > Attributes >Internet Protocols (TCP/IP), and check IP Address and Subnet Mask. Make sure they are in the same subnet when configuring IP Camera IP address manually.Unable to access IP Camera via web browser

#### 8.3.3 Network Configuration

Double Check to ensure that your HTTP server software is configured and running properly. If you are running any firewall software, make sure it is allowing inbound connections to port 80,Also, if you happen to be using a cable/DSL router, make sure

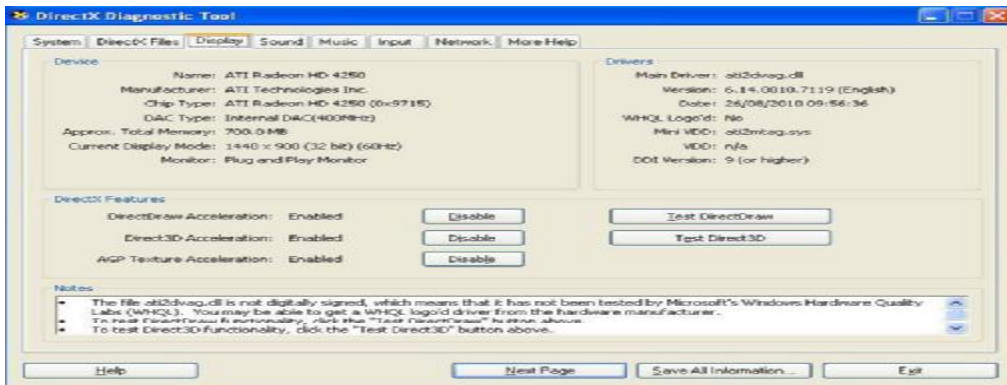
you are set up port forwarding properly. ( consult your router is documentation for more information ) .If none of these seem to be the problem, it is also possible that your ISP is blocking inbound connections to port 80 –many IPSs have done this because of internet worms such as Code Red, If this is the case, you ,ll have to setup your HTTP server on an alternate port (such as 8080).

### 8.3.4 No Monitoring picture

It has four reasons Images of the abnormal factors:

- 1、 If its not use Directx function and lead to not normal to display the color image.Please install DirectX and open the start menu then input the command.

Picture 120



You use the DirectX function and it will expedite the DirectDraw,Direct3D and AGP, if its can not ,maybe the connect issues or hardware not read it.

- 2.The issues of hardware, can't support the card ,expedite image.
- 3.The antivirus software will influence the network, it will be stoped or closed.If you install fireproof software please close it and try again.
4. ActiveX controller is not installed correctly

If its not image on the first time to use, and will display to the user through the ActiveX.If its can not display of the image, maybe it fail of install, about this issues, please follow as:

- 1.Install "IP Camera Tool", ActiveX control at the same time.
- 2.Please install ActiveX control and keep the security settings for IE browser .

### 8.3.5 Problems with network bandwidth

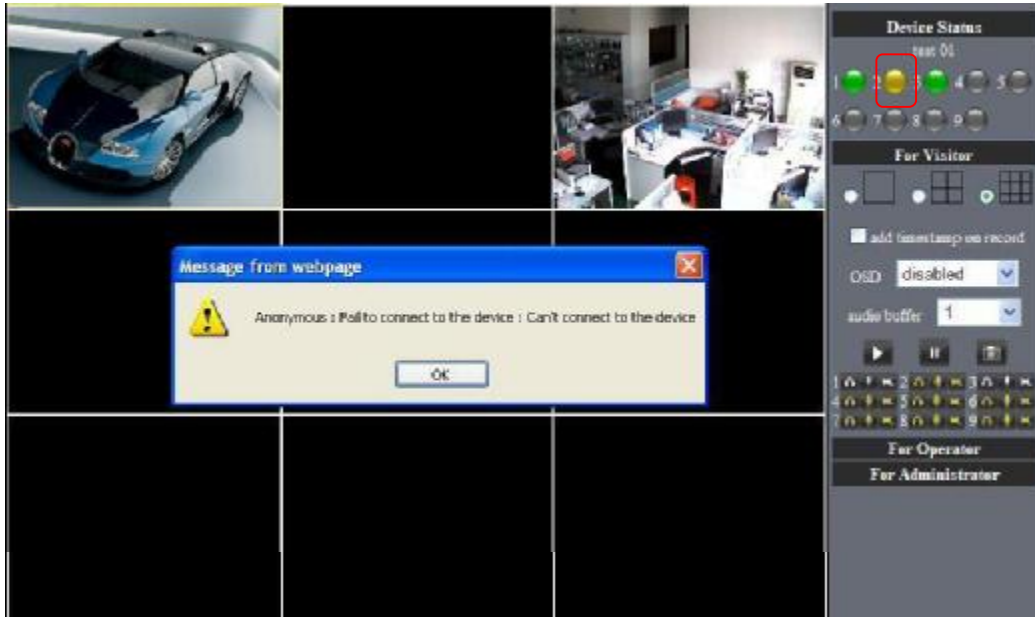
The image frame rate is subjected to the following factors: 1.network bandwidth; 2. PC performance,network environment and display preference setting (brightness, theme, etc.); 3. the number of visitors (Too many visitors will slow down the image frame rate.); 4. choice of switch or hub (Use a switch for multiple IP Camera Servers rather than a HUB.).

The Device use MJPEPT Compression, it needs good network bandwidth, If it is too narrow, it will lead to slowly browser. Typical video parameter occupy network bandwidth as blows:

- 640x480@30fps : 4.0 Megabits ~ 5.0 Megabits
- 320x240@30fps : 1.2 Megabits ~ 1.6 Megabits

### 8.3.6 Why pop-up the prompt "Fail to connect to the device...?"

This prompt only appeared in the case of using multiple cameras.  
 Enter the Multi-Device Settings page(login as administrator) to check the Device setting is correct or not.  
 When one of the multiple cameras disconnected, the color changed to yellow and pop-up the prompt"Fail to connect to the device...".



Picture 121

### 8.3.7 Can't access the IPCAM in the internet?

There are some reasons:

- 1 ActiveX controller is not installed correctly(see more details:5.1.4).
  - 2 The port IPCAM used is blocked by Firewall or Anti-virus software. Please change a port number and try again.
  - 3 Port mapping is not success. You can do port mapping by two ways:
    - .Enter setting page of the router which IPCAM connect with to enable UPnP function.
    - Enter IPCAM "UPnP Settings" to enable UPnP and make sure the state is "UPnP success".
    - . If your router has the Virtual Map function. Enter router setting page, add IPCAM" s IP and port to the Virtual map list.
- When use ADSL, the IP is dynamic. You should set DDNS(see more details 3.5.4 & 5.1.6) and also make sure port mapping success.

## 8.4 Operate common problem solving

### IP camera tool can't find the camera?

Except of the camera broken

1. Make sure the cable connector no problem, recommend connector (AMP),it is with international standard. Another note, IPCAM's data

transmission channel require higher than computer's, so maybe the computer can run normally but IPCAM can't, Please press heavily when making the cable connector.

2. Confirm the power supply normally. First, check whether power indication light turn on or not, If it is on, then check the yellow light on RJ45 Port (power indication light) and green light (network indication light) are on or not. If they are on, so power supply and cable runs normally.
3. Confirm all the firewall and antivirus software are close. The firewall often block unrecognized data so if the firewall is running, so maybe the IPCAM TOOL can't find the device. Suggest to close firewall and antivirus software temporarily before searching.

#### **How to solve the camera blank screen?**

1. Check if you are using the wrong power adaptor. please use original one.
2. Close antivirus software.

#### **How to solve the camera can't login by Internet?**

1. Check if you set DDNS success or not?
2. Check the current IPCAM's port number is the same as router's? They need to keep same.

#### **Can't view the monitoring picture**

1. Reason: can't connect with network  
Solution: Check if the network connect well, exclude cable fault and PC virus cause network fault until can be used between PC and PING.
2. Reason: IP address occupy by other device  
Solution: Choose automatic gain
3. Reason: IP address located within different subnet  
Solution: Check IPCAM'S ip address and subnet mask address and gateway settings.
4. Reason: Web port has been modified  
Solution: contact network administrator to obtain port information.
5. Reason: unknown  
Solution: Press reset button to factory default state, then reconnecting. system default to gain ip address automatic, subnet mask is 255.255.255.0

## **8.5 Default Parameters**

- Default network Parameters

**IP address:** dynamic obtain

**Subnet mask:** 255.255.255.0

**Gateway:** dynamic obtain

**DDNS:** Factory provide

- Username and password

Default administrator username: **admin**

Default administrator password : **No password**

## 8.6 Technical Parameters

ITEM		IP CAM (NIP-02BGPWA2)
Image Sensor	Image sensor	1/5" Color CMOS Sensor
	Display	640 x 480 (300K Pixels)
	Lens	f:3.6mm, F:2.4 (IR Lens)
	Mini. illumination	0.5 Lux
Lens	Lens Type	Glass Lens
	Viewing Angle	60 Degree
Audio	Microphone	Audio of two way
Domain name	Server	MSN server/ DDNS server
Video	Image Compression	MJPEG
	Image Frame Rate	15 FPS (VGA), 30FPS (QVGA)
	Resolution	640 x 480 (VGA), 320 x 240 (QVGA)
	Flip Mirror Images mode	Vertical / Horizontal
	Video Parameters	Brightness, Contrast
	Communication	Ethernet
Supported Protocol		HTTP/DHCP/IP/TCP/UDP/FTP/SMTP/DDNS/PPPoE/UPnP
Mobilephone monitor		Support Iphone/Ipad/3G phone/smartphone
Wireless Standard		IEEE 802.11b/g
Wireless Standard		802.11b:11Mbps(max.) 802.11g:54Mbps(max.)
Wireless Security		64/128-bit WEP Encryption
Physical	Pan/Tilt Angle	Horizontal:330° & Vertical: 90°
	Infrared Light	10 IR LEDs, Night visibility up to 15 Meters
	Product size	100(L) x100(W) x125mm(H)
	<a href="#">Gross Weight</a>	646.5g/pcs (packing size:196x165x123mm)
	<a href="#">Net Weight</a>	254.7g/pcs (only product)
Power	<a href="#">Specification</a>	DC 5V/2.5A 1.8 meter
	Power Consumption	5 Watts
Environment	Operate Temper	0° ~ 55° C (14° F ~ 122° F)
	Operating Humidity	20% ~ 85% non-condensing
	Storage Temper	-10° C ~ 60° (14° F ~ 140° F)
	Storage Humidity	0% ~ 90% non-condensing
PC Requirements	CPU	2.0GHZ or above (suggested 3.0GHZ)
	Memory Size	512MB or above (suggested 1.0GB)
	Display card	64M or above
	Supported OS	Microsoft Windows XP/Vista/Windows7
	Supported browsers	IE, Firefox, Google
Certification	CE, FCC, RoHS	
Warranty	Limited 1-year warranty	

FCC Caution: Any changes or modifications not expressly approved by the party responsible for compliance could void the user's authority to operate this equipment.

This device complies with Part 15 of the FCC Rules. Operation is subject to the following two conditions: (1) This device may not cause harmful interference, and (2) this device must accept any interference received, including interference that may cause undesired operation.

This device and its antenna(s) must not be co-located or operating in conjunction with any other antenna or transmitter.

For a Class B digital device or peripheral, the instructions furnished the user shall include the following or similar statement, placed in a prominent location in the text of the manual:

NOTE: This equipment has been tested and found to comply with the limits for a Class B digital device, pursuant to Part 15 of the FCC Rules. These limits are designed to provide reasonable protection against harmful interference in a residential installation. This equipment generates, uses and can radiate radio frequency energy and, if not installed and used in accordance with the instructions, may cause harmful interference to radio communications. However, there is no guarantee that interference will not occur in a particular installation. If this equipment does cause harmful interference to radio or television reception, which can be determined by turning the equipment off and on, the user is encouraged to try to correct the interference by one or more of the following measures:

- Reorient or relocate the receiving antenna.
- Increase the separation between the equipment and receiver.
- Connect the equipment into an outlet on a circuit different from that to which the receiver is connected.
- Consult the dealer or an experienced radio/TV technician for help.

**FCC RF Exposure Information and Statement**

To maintain compliance with FCC RF exposure requirements, use accessories that maintain a 20cm separation distance between the user's body

Part number	manufacturer	Antenna type	connector	Gain
ANT-2400M-0178	OMX	Gzvtpci'Omni Antenna"	Tgugt'xg"UOC/v{r g	4'fDK'