



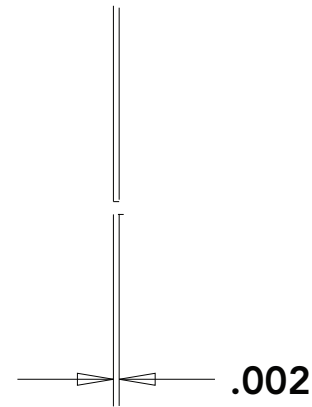
Label Specification

Label P/N: 334-0040-00

Units: Inches

Date: 08/23/11

Dederick



4:1

Background Color to be:
Pantone 327-2

MATERIAL:

POLYESTER

OVERLAY:

- GLOSS
- SEMI-GLOSS
- MATTE
- TEXTURED LEXAN

PANTONE 327-2 SWATCH

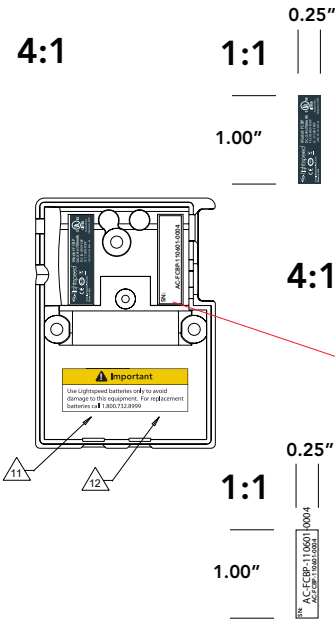
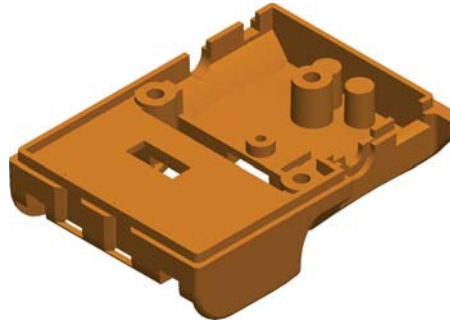
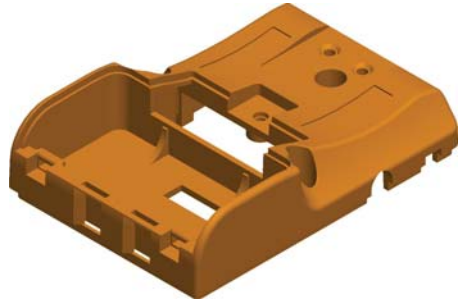


LIGHTSPEED TECHNOLOGIES, INC.
www.lightspeed-tek.com
800.732.8999

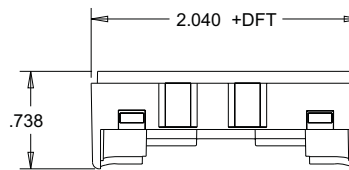
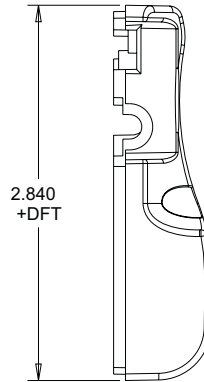
334-0040-00_FCBP_NAMEPLATE
LABEL SPECIFICATIONS

| | |
|---------------------------------|--------------------------------------|
| LABEL PART: | 334-0040-00 |
| REVISION: | 02 |
| DATE: | 8/23/2011 |
| MATERIAL: | POLYESTER, GLOSS |
| ADHESIVE: | UL APPROVED |
| WIDTH: | 1.000 INCHES |
| HEIGHT: | 0.250 INCHES |
| THICKNESS: | 2 MIL |
| TOLERANCES: | 0.002 INCH |
| COLORS: | PANTONE 327-2 BACKGROUND, WHITE TEXT |
| SUBSTRATES: | ABS |
| ENVIRONMENT: | INDOOR USE |
| APPLICATION: | SHEETS - APPLIED BY LIGHTSPEED |
| SERIALIZED: | NO |
| UL REQUIREMENTS: | UL APPROVED PROCESS FOR MAT/ADH |
| REGULATORY REQUIREMENTS: | UL, RoHS |

| REV | REF | DESCRIPTION OF CHANGE | CHK BY | DATE |
|-----|-----|-----------------------|--------|---------|
| 01 | | | TN | 03JUN11 |



SN: AC-FCBP-110601-0004
AC-FCBP-110601-0004



15. ALL OUTSIDE SURFACES: TEXTURE MOLD-TECH MT 11010
14. UL REQUIRED MARKINGS & DOCUMENTATION FOR SUBPARTS WITH UL REQUIREMENTS, MUST BE INCLUDED WITH EACH SHIPMENT.
13. PARTS MUST BE FABRICATED/MOLDED BY A UL RECOGNIZED FABRICATOR/MOLDER. MATERIAL AND PROCESS MUST BE UL RECOGNIZED.
12. MOLD REVISION DATE CODE AND REVISION NUMBER TO BE ENGRAVED IN THIS AREA.
11. PLASTIC RECYCLING CODE ">PC/ABS<" THIS AREA. RAISED/RECESSED TEXT HEIGHT .094 X .003/.006
10. ALL MATERIALS AND PROCESSES SHALL BE ROHS COMPLIANT
9. MOLD DESIGN TO BE APPROVED BY LIGHTSPEED INC.
8. COSMETIC GRADE B ALL SURFACES
7. UL 94 HB FLAME RATED
6. CORNERS AND FILLETS MODELED SHARP: R .005 MAX
5. SINK: .005MAX
4. FLASH: .008 MAX
3. EJECTOR MARKS: +.xxx/-.yyy MAX
2. DEGATE: +.008/-.008
1. DIMENSIONING AND TOLERANCING PER ASME Y14.5M - 1994

NOTES: UNLESS OTHERWISE SPECIFIED.

| | | | |
|--|---|---|------------------|
| | | LightSPEED Technologies, INC. 11509 SW HERMAN ROAD TUALATIN, OR 97062 USA | |
| RELEASED FOR PRODUCTION TOOLING | | SIGNATURE | DATE |
| DWN TN | DIMENSIONS ARE IN INCHES TOLERANCES UNLESS OTHERWISE SPECIFIED | | |
| ENGR TN | DEC ± .005 | ANLR | ± ° |
| CHKR | SCALE | FIRST USED ON | |
| PROD | NONE | FLEXCAT | |
| MATERIAL PC/ABS - LIGHTSPEED BLACK | | | |
| FINISH SEE NOTES | | | |
| TITLE CASE, BASE, FLEXCAT BELT PACK | | | |
| CODE IDENT NO | SIZE | PART NUMBER | SH 1 OF 1 REV 01 |
| C | | 395-0039-00 | |

DO NOT SCALE DRAWING
PTC