



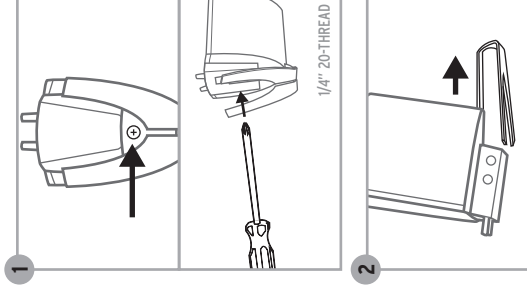
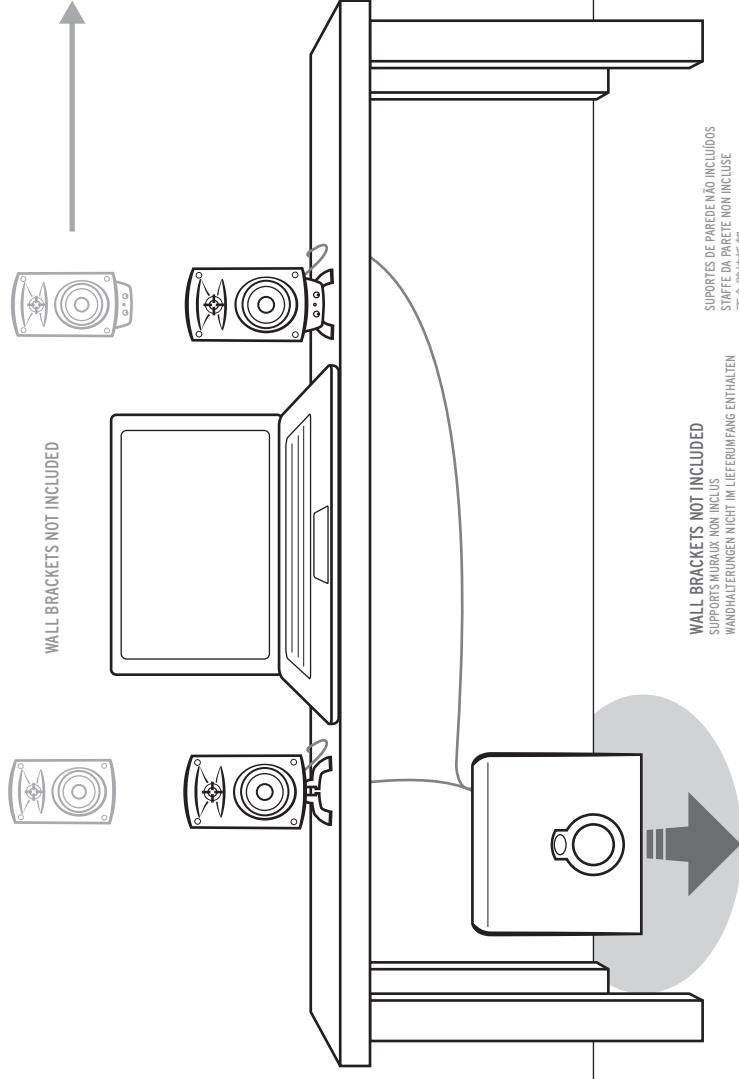
Klipsch® ProMedia 2.1 BT

Owner's Manual



SPEAKER PLACEMENT

PLACEMENT DES ENCEINTES COLOCACIÓN DE LOS ALTAVOCES LAUTSPRECHERPLATZIERUNG POSICIONAMIENTO DAS CAIXAS ACÚSTICAS COLLOCAZIONE DEGLI ALTOPARLANTI 扬声器放置



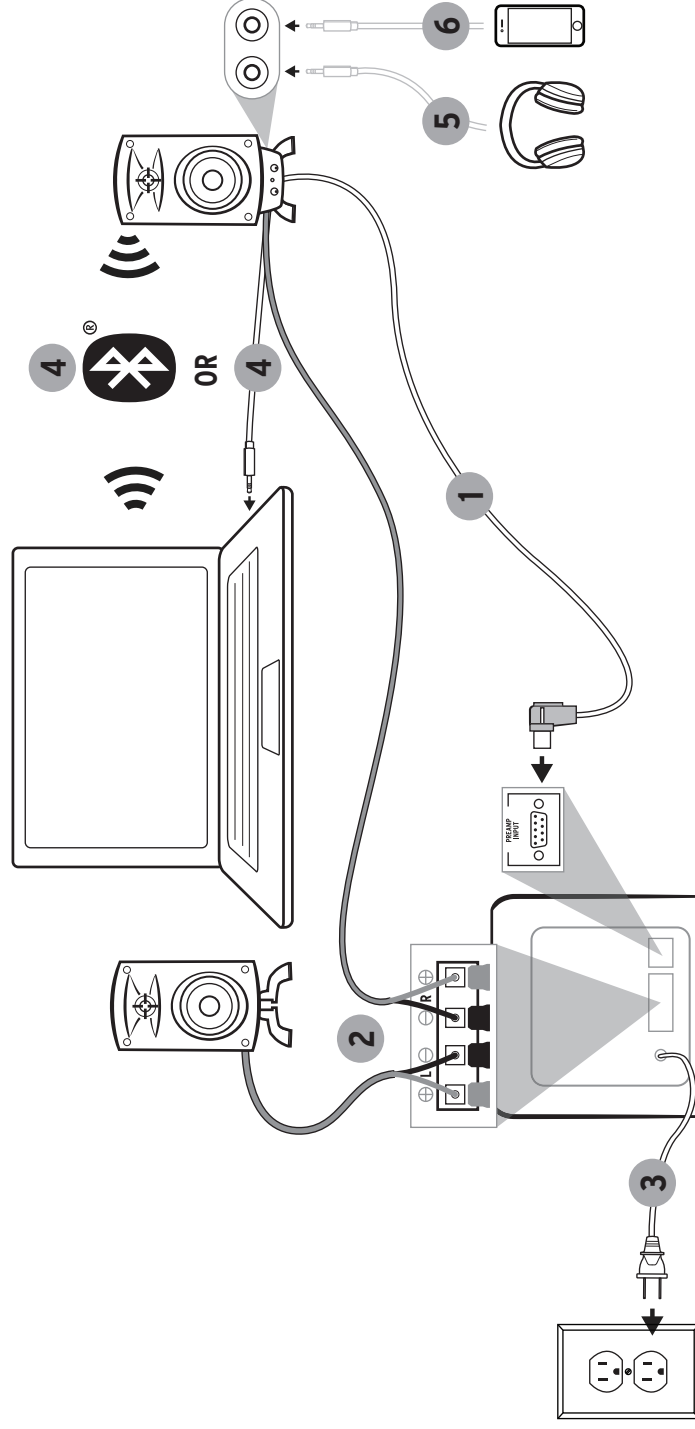
1/4" 20-THREAD
 1/4" à filetage 20
 1/4 de pçg. con rosca 20
 1/4 Zoll 20er-Gewinde
 Parafuso de rosca de 1/4"
 1/4 pollice filo 20
 1/4英寸 (螺台圖號為 20)

WALL BRACKETS NOT INCLUDED
 SUPPORTS MURAUX NON INCLUS
 WANDHALTERUNGEN NICHT IM LIEFERUMFANG ENTHALTEN
 NO SE INCLUYEN LOS SOPORTES DE PARED

SUPPORTES DE PAREDE NÃO INCLUIDOS
 STAFFE DA PARETE NON INCLUSE
 不含壁掛托架

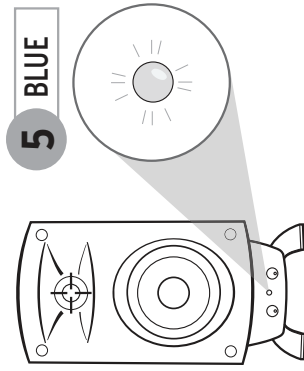
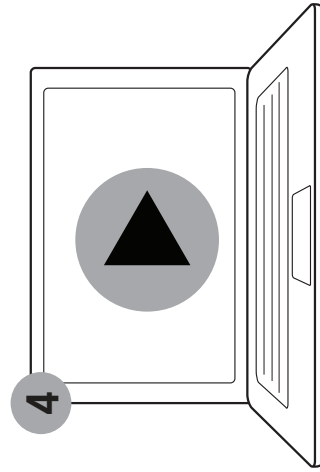
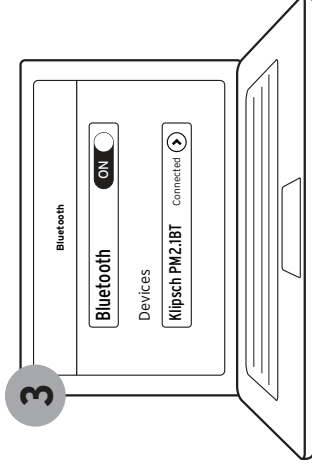
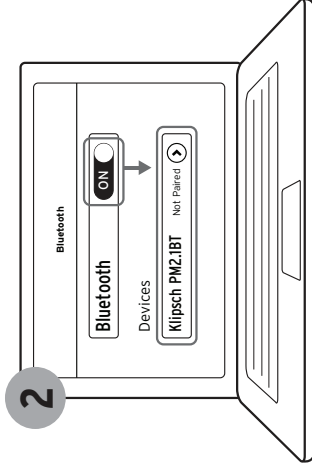
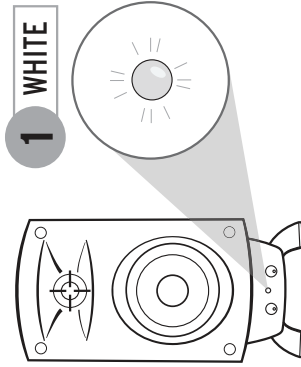
SPEAKER CONNECTION

RACCORDAMENTO DES ENCINTES CONEXIÓN DE ALTAVOCES LAUTSPRECHERANSCHLUSSDIAGRAMM CONEXÃO DAS CAIXAS ACÚSTICAS COLLEGAMENTO DEGLI ALTOPARLANTI 扬声器连接图解



BLUETOOTH® WIRELESS TECHNOLOGY

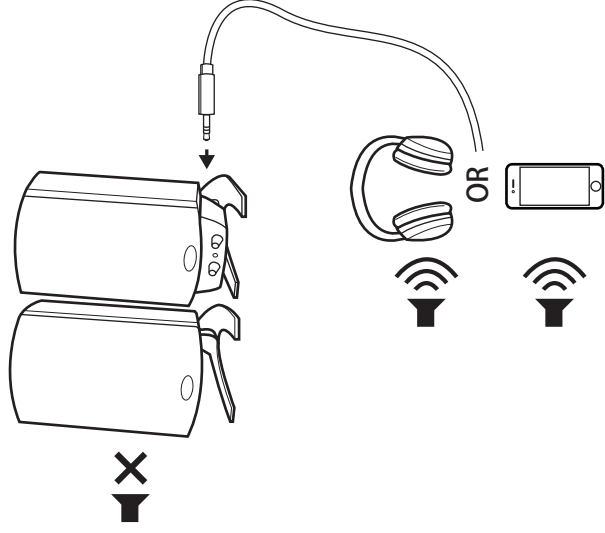
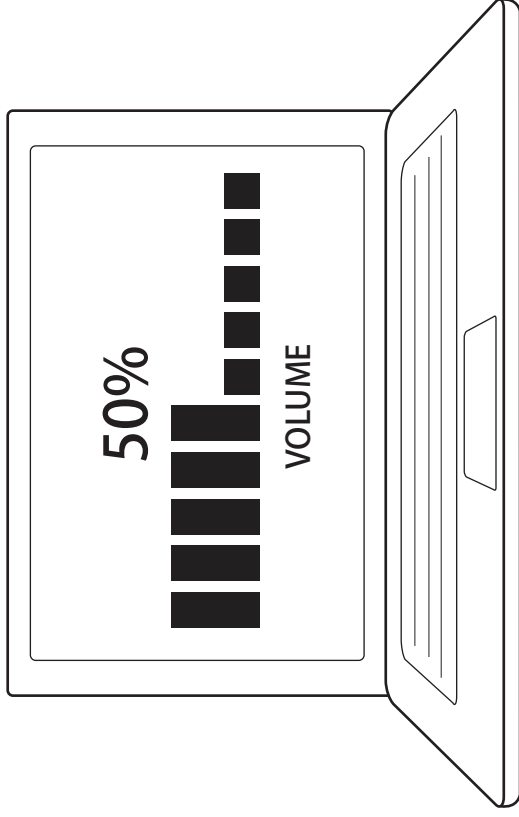
TECNOLOGÍA INALÁMBRICA **BLUETOOTH®** CONFIGURACIÓN DE TECNOLOGÍA WIRELESS **BLUETOOTH®** DRAHTLOSE **BLUETOOTH®** TECHNOLOGIE-SETUP CONFIGURAZIONE TECNOLOGIA WIRELESS **BLUETOOTH®**
 CONFIGURAÇÃO DE TECNOLOGIA SEM FIO **BLUETOOTH®** **BLUETOOTH®** 蓝牙无线技术



WHITE	BLUE
BLANC	BLAU
BLANCO	AZUL
WEISS	BLAU
BIANCO	BLU
BRANCO	AZUL
白色	蓝色

VOLUME

VOLUMEN 音量



For more in-depth information and troubleshooting instructions visit KLIPSCH.COM/promedia

Pour plus d'informations et des instructions de dépannage détaillées, consultez Klipsch.com/promedia

Hay información más detallada e instrucciones de detección y reparación de averías en Klipsch.com/promedia

Detailliertere Anweisungen und Hinweise zur Problembeseitigung finden Sie unter Klipsch.com/promedia

Per informazioni più dettagliate e istruzioni per la soluzione dei problemi, visitate Klipsch.com/promedia

Para obter informações mais detalhadas e instruções para solucionar problemas, visite o site Klipsch.com/promedia

欲了解更详细的信息和故障排除说明，请访问 Klipsch.com/promedia。



Klipsch[®]

KEEPERS OF THE SOUND

3502 Woodview Trace, Indianapolis, IN, USA
KLIPSCH.COM

1-800-KLIPSCH ©2016 Klipsch Group, Inc. All rights reserved. Klipsch and Keepers of the Sound are registered trademarks of Klipsch Group, Inc. in the USA and other countries.
A wholly-owned subsidiary of Vox International Corporation.
The Bluetooth[®] word mark and logos are registered trademarks owned by Bluetooth SIG, Inc. and any use of such mark by Klipsch Group, Inc. is under license.

