

microlab

just listen



MD213



QDID: 44018



www.microlab-global.com
Microlab Electronics Co., Ltd
Made in China

Disclaimer: All symbols and logos belong to the respective brand holder or registered holder. All specifications and information are subject to changes without further notice. Slight variations and differences might appear between the printed photos and actual product due to product enhancement.

The Bluetooth® word mark and logos are registered trademarks owned by Bluetooth SIG, Inc. and any use of such marks by Microlab Electronic Co., Ltd is under license. Other trademarks and trade names are those of their respective owners.

Caution:

To reduce the risk of electric shock, do not dismantle the product and do not expose the apparatus to rain or moisture. No user-serviceable parts inside. Refer servicing to qualified personnel only.

Explanation of Graphical Symbols:

The lightning flash within an equilateral triangle is intended to alert you to the presence of uninsulated dangerous voltage within the product's enclosure that may be of sufficient magnitude to constitute an electric shock to a person or persons.

The exclamation point within an equilateral triangle is intended to alert you to the presence of important operating and maintenance (servicing) instructions in the literature accompanying the product.

WARNINGS:

- Read Instructions** - All the safety and operating instructions must be read before the product is operated.
- Retain Instructions** - The safety and operating instructions should be kept with the product for future reference.
- Read warnings** - All warnings on the product and in the operating instructions should be adhered to.
- Follow instructions** - All operating and users' instructions should be followed.
- Installation** - Install in accordance with the manufacturers' instructions.
- Power sources** - This product should be operated only from the type of power source indicated by the marking adjacent to the power cord entry. If you are not sure of the type of power supply to your home, consult your product dealer or local power company.
- Grounding or polarization** - The product is not required to be grounded. Ensure the plug is fully inserted into the wall outlet or extension cord receptacle to prevent blade or pin exposure. Some versions of the product are equipped with a power cord fitted with a polarized alternating line plug (a plug having one blade wider than the other). This plug will fit into the power outlet only one way. This is a safety feature. If you are unable to insert the plug fully into the outlet, try reversing the plug. If the plug should still fail to fit, contact your electrician to replace your obsolete outlet. Do not defeat the safety purpose of the polarized plug. When using an extension power-supply cord or a power-supply cord other than that supplied with the product, it should be fitted with the appropriate molded plugs and carry safety approval appropriate to the country of use.
- Power cord protection** - Power-supply cords should be routed so that they are not likely to be walked on, kinked or pinched by items placed on or against them, paying particular attention to cords from plugs, receptacles and the point where they exit from the appliance.
- Overloading** - Do not overload wall outlets, extension cords or multiple sockets, as this can result in a risk of fire or electric shock.
- Ventilation** - The product must be properly ventilated. Do not place the product on a bed, sofa, or other similar surface. Do not cover the product with any items such as tablecloths, newspapers, etc.
- Heat** - The product should be situated away from heat sources such as radiators, heat registers, stoves, or other products including amplifiers that produce heat. No naked flame sources, such as lighted candles, should be placed on the apparatus.
- Water and moisture** - To reduce the risk of fire or electric shock, do not expose the product to rain, dripping, splashing or excessive moisture such as in a sauna or bathroom. Do not use this product near water, for example, near a bathtub, washbowl, kitchen sink, laundry tub, in a wet basement, or near a swimming pool, or etc.
- Object and Liquid Entry** - Never push objects of any kind into this product through openings, as they may touch dangerous voltage points or short-circuit parts that could result in a fire or electric shock.
- Cleaning** - Unplug the product from the wall outlet before cleaning. The cabinet of the subwoofer may be cleaned by dusting with a dry cloth. If you wish to use an aerosol cleaning spray, do not spray directly on the cabinet; spray onto the cloth. Be careful not to damage the drive units.
- Attachments** - Do not use attachments not recommended by the product manufacturers, as they may cause hazards.
- Accessories** - Do not place this product on an unstable cart, stand, tripod, bracket or table. The product may fall, causing serious injury to a child or adult, and serious damage to the product. Use only with a cart, stand, tripod, bracket or table recommended by the manufacturer or sold with the product. Any mounting of the product should follow the manufacturers' instructions and should use a mounting accessory recommended by the manufacturer.
- Moving the product** - A product and cart combination should be moved with care. Quick stops, excessive force and uneven surfaces may cause the product and cart combination to overturn.
- Un-use periods** - The power cord of the device should be unplugged from the outlet during lightning storms or when the apparatus is left unused for a long period of time.
- Servicing** - Do not attempt to service this product yourself, as opening or removing covers may expose you to dangerous voltage or other hazards. Refer all servicing to qualified service personnel.
- Use** - When plugged in to a power source, the system is in standby mode, so the power is not entirely cut off.
- Replacement parts** - When replacement parts are required, ensure the service technician has used replacement parts specified by the manufacturer or have the same characteristics as the original part. Unauthorized substitutions may result in fire, electric shock or other hazards.
- Main fuses** - For constant fire protection, use the fuse of the correct type and rating. The correct fuse specification for each voltage range is marked on the product.
- Do not turn up the volume while listening to a section with very low level inputs or no audio signals. If you do, the speaker may be damaged when a peak level section is suddenly played.
- The only means of completely disconnecting the product from the power supply is by removing the power cord from the wall outlet or the product. The wall outlet or the power cord entry to the product must remain freely accessible at all times while the product is in use.
- To install the product near a wall socket or extension cord and shall be easily accessible.
- The highest environmental temperature suitable for this product is 40°C.

FCC WARNING

Warning: Changes or modifications to this unit not expressly approved by the party responsible for compliance could void the user's authority to operate the equipment.

FCC STATEMENT

NOTE: This equipment has been tested and found to comply with the limits for a Class B digital device, pursuant to Part 15 of the FCC Rules. These limits are designed to provide reasonable protection against harmful interference in a residential installation. This equipment generates, uses and can radiate radio frequency energy and, if not installed and used in accordance with the instructions, may cause harmful interference to radio communications.

However, there is no guarantee that interference will not occur in a particular installation. If this equipment does cause harmful interference to radio or television reception, which can be determined by turning the equipment off and on, the user is encouraged to try to correct the interference by one or more of the following measures:

- Reorient or relocate the receiving antenna.
- Increase the separation between the equipment and receiver.
- Connect the equipment into an outlet on a circuit different from that to which the receiver is connected.
- Consult the dealer or an experienced radio/TV technician for help.

Introduction

Enhance and power your tablet's music and sound. Compact design and small soundbar system with two quality speaker drivers. Broaden your tablet sound range and listen to distinct sound effects. Uniquely designed air port at the bottom for enhanced mid sound production. Speakerphone function for picking calls from your mobile phone during music playback.

Stream music wirelessly from your smartphone, tablet, or even your notebook. Listen to enhanced amplified sound from your favourite gadgets. Connects to any products with Bluetooth® wireless technology using A2DP profile and listen to digital music.

Easy connection with alternative 3.5mm stereo plug for wide range playback device support.

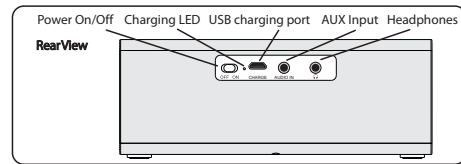
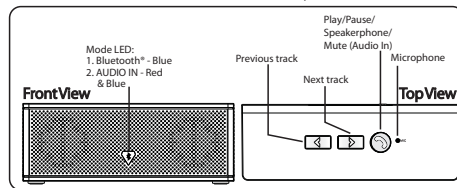
Comes with built-in rechargeable battery for portability and prolong use. Travel with your tablet, or smartphone, and enjoy to enhanced sound everywhere you go.

Features

- Wireless music streaming with Bluetooth® wireless technology
- Quality stereo speaker system with built-in amplifier
- Ideal for digital music, gaming, and smartphone audio applications
- Clear and powered sound with enhanced midrange sound
- Soundbar type design in compact size
- Connects to any 3.5mm stereo jack easily e.g., smartphone, tablet, PC, notebook, Mp3/Mp4, CD/DVD player, etc.
- Rechargeable battery for longer use and portability
- Speakerphone function for call pickup during music entertainment
- Portable system, ideal for traveling and music on-the-go
- Dual modes: Bluetooth® Wireless Technology, and 3.5 mm stereo input

Packaging List

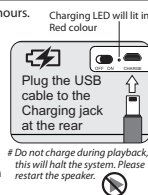
- | | |
|-----------------------------|------|
| • MD213 speaker | 1 pc |
| • 3.5 mm stereo audio cable | 1 pc |
| • USB charging cable | 1 pc |
| • User manual | 1 pc |



Charging

Prior to initial use, please charge the battery for 4 to 6 hours.

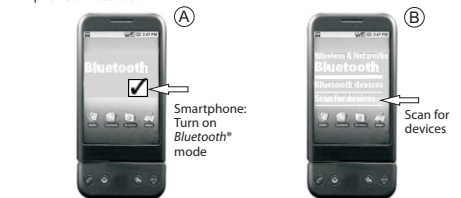
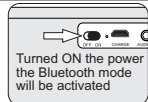
- Use only the included USB cable to charge, connect the USB type A end to the notebook or USB hub.
- Connect the opposite end to micro USB jack at the speaker back panel.
- Power on the notebook or USB hub to commence charging. For normal usage, please use the same steps to charge the battery.
- Charging should complete under 4 hours.
- The red LED will illuminate during charge, and turn off after fully charged.



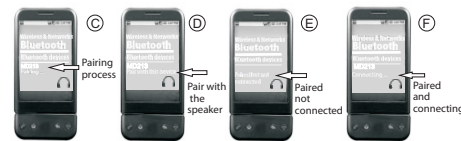
Connections

Bluetooth mode (initial use)

- Turn on the speaker. The Bluetooth function is the default mode.
- The front LED will illuminate in Red and Blue colours steadily for several seconds before blinking in Blue for Bluetooth pairing.
- Activate the Bluetooth mode on your mobile phone or notebook.



- In the Bluetooth setup screen, search for the discoverable device name of "MD213".
- Once located, select and pair with it. Thereafter, select and connect to it. A "beep" is sound and the front LED will illuminate steadily when the connection is successful.

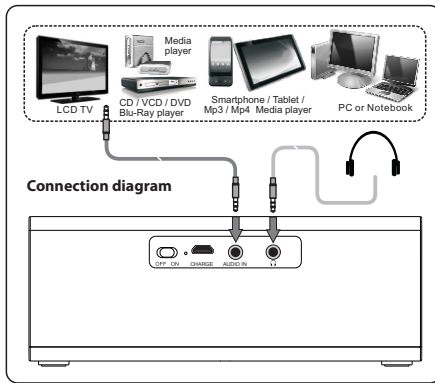


Connections (continue)



AUDIO IN (3.5 mm stereo input)

1. Insert the 3.5 mm plug into the AUDIO IN jack at the rear of the speaker
2. Insert the other end into your media player such as Smartphone, Tablet, Mp3/ Mp4 player, CD/DVD player, and PC/ Notebook.
3. Once the 3.5 mm stereo jack is connected with the 3.5 mm stereo plug, the Bluetooth mode will automatically switched to this line input mode.
4. And the playback on the Bluetooth device will be stopped.
5. The front LED will illuminate steadily in Red and Blue colours.

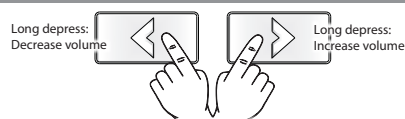


Operations

1. Start the playback on the media player such as Smartphone, Tablet, Mp3/ Mp4, CD/DVD player, and PC/ Notebook.
2. Adjust the volume on the speaker to your preferred listening level.
3. Alternatively, you can adjust the master volume level from your media player.



Operations (continue)



Adjust master volume: Depress for several seconds to increase or decrease the volume level. Once the maximum is reached, there is an repeating audio tone to alert the user.

Adjust master volume on the media player:

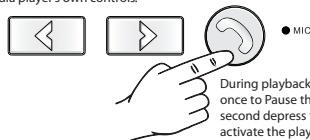
Note:

This product is specially designed for Smartphone.
Strong signal from sources, such as notebook, tablet, or Mp3/ Mp4 player can cause distortion. Please reduce the volume level to avoid the distortion.

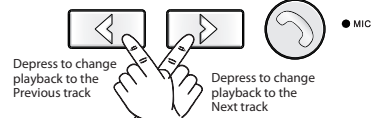


Bluetooth® playback mode:

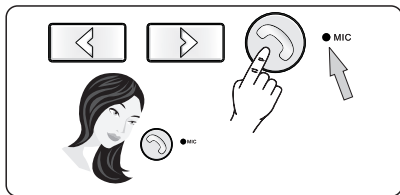
1. To pause the playback, simply depress the Speakerphone button once to pause. The front LED will lit steadily.
2. To commence playback, depress again to reactivate the playback. The front LED will blink slowly again to indicate playback mode.
3. Note that the above mentioned functions are also able to execute from the media player's own controls.



4. To change tracks during playback, depress either NEXT or PREVIOUS button.



5. When connected to a Smartphone in Bluetooth® mode, you can depress the Speakerphone button for incoming calls. When there is an incoming call, the speaker will emit a tone to alert the listener. You can pick your calls from the speaker and converse through the built-in microphone. If the pickup is during a music playback, the player will pause.



During Bluetooth® playback mode: (continue)

6. To end the conversation, depress the button again to hang up the call.
7. The interrupted music playback will resume again.
8. Note: For some legacy devices, you might be prompted to enter a password to continue the pairing process. Please type the password "0000" to proceed.

AUDIO IN

1. Switch on the speaker power.
2. If the 3.5 mm jack is plugged, the front LED will illuminate in Red and Blue colours.
3. Start the music playback on your media player.
4. Adjust the master volume from either the media player, or the speaker. Please adjust the volume to your preferred listening level.
5. To interrupt your music playback, you can depress the Speakerphone button to mute the speaker. Note: during the mute function, the media player is still in playback mode, but no sound will be reproduced.

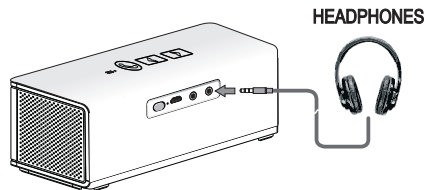


AUDIO IN mode: during playback, depressing the Speakerphone button will mute the speaker

6. Note: "media player" refers to any media player with 3.5 mm stereo jack for audio output, such as Smartphone, Tablet, CD/DVD player, Mp3/Mp4 player, PC/Notebook, or LCD TV.
7. Depress the Speakerphone button again to reactivate the sound reproduction, and continue listening to the playback.

Headphones

1. For personal entertainment, you can plug a pair of headphones, or earphones to the speaker.
2. Connect the headphones' 3.5 mm plug into the rear headphones jack.
3. The main speakers will be muted, and the sound is channeled to the 3.5 mm headphones stereo jack.
4. This channeling of sound works for both Bluetooth®, and 3.5 mm Audio IN modes, as long the headphones jack is plugged in.



Technical Specifications

Amplifier	
Output power, RMS	4 Watt RMS
Power distribution, Watt	2 Watt x 2 RMS
Harmonic distortion	< 0.5% 1 W 1 kHz
Frequency response	120 Hz - 18 kHz
Signal/Noise ratio, dB	> 70 dB
Separation, dB	> 55 dB
Speakers	
Full range driver type	1.5"
Full range impedance	4 Ohm
Interfaces	
Output	3.5 mm stereo headphones jack
Input	3.5 mm stereo AUDIO IN Bluetooth® 2.1 + EDR, HSP, HFP, A2DP, AVRCP profiles
Power	
Lithium battery	3.7V 1500 mA
Charging	USB cable, Micro-USB

Frequently Asked Questions (FAQs)

Questions	Solutions
Power LED won't light up	Check if the speaker battery is charged. Ensure the front LED is lit to indicate power is sufficient.
No Sound	Check if the media player is correctly connected. Check if the Bluetooth connection is correctly paired and connected.
During playback, can the battery be charged?	Do not charge the battery during playback.
Cannot pair correctly with the Bluetooth device	Please remove previously paired devices from your mobile, and then "search for devices" again. Reconnect and try again.
What are the products supported?	Any playback devices such as smartphone, tablet, PC, notebook, CD/DVD player, media players with 3.5mm stereo plug, and Bluetooth®.
Sound is distorted	Check if the source file is not corrupted, play a different song and test. Ensure music file is of 192 kbps bitrate or higher.
If the problem still exists, please contact the distributor or seek professional advice.	