

microlab
just listen

microlab



www.microlab.cn
Microlab Electronics Company Ltd.
Made in China
© 2012 All rights reserved

Disclaimer: All symbols and logos belong to the respective brand holder or registered holder. All specifications and information are subject to changes without further notice. Slight variations and differences might appear between the printed photos and actual product due to product enhancement. The Bluetooth® word mark and logos are registered trademarks owned by Bluetooth SIG, Inc. and any use of such marks by Microlab Electronic Co., Ltd is under license. other trademarks and trade names are those of their respective owners.

 **Bluetooth®** MD212
QDID: B019889 User Manual

Caution:

To reduce the risk of electric shock, do not dismantle the product and do not expose the apparatus to rain or moisture. No user-serviceable parts inside. Refer servicing to qualified personnel only.

Explanation of Graphical Symbols:



The lightning flash within an equilateral triangle is intended to alert you to the presence of uninsulated dangerous voltage within the product's enclosure that may be of sufficient magnitude to constitute an electric shock to a person or persons.



The exclamation point within an equilateral triangle is intended to alert you to the presence of important operating and maintenance (servicing) instructions in the literature accompanying the product.

WARNINGS:

1. Read Instructions - All the safety and operating instructions must be read before the product is operated.
2. Retain Instructions - The safety and operating instructions should be kept with the product for future reference.
3. Heed warnings - All warnings on the product and in the operating instructions should be adhered to.
4. Follow instructions - All operating and users instructions should be followed.
5. Installation - Install in accordance with the manufacturer's instructions.
6. Power sources - This product should be operated only from the type of power source indicated by the marking adjacent to the power cord entry. If you are not sure of the type of power supply to your home, consult your product dealer or local power company.
7. Grounding or polarization - the product is not required to be grounded. Ensure the plug is fully inserted into the wall outlet or extension cord receptacle to prevent blade or pin exposure. Some versions of the product are equipped with a power cord fitted with a polarized alternating line plug (a plug having one blade wide than the other). This plug will fit onto the power outlet only one way. This is a safety feature. If you are unable to insert the plug fully into the outlet, try reversing the plug. If the plug should still fail to fit, contact your electrician to replace your obsolete outlet. Do not defeat the safety purpose of the polarized plug. When using an extension power-supply cord or a power-supply cord other than that supplied with the product, it should be fitted with the appropriate molded plugs and carry safety approval appropriate to the country of use.
8. Power cord protection - Power-supply cords should be routed so that they are not likely to be walked on, kinked or pinched by items placed on or against them, paying particular attention to cords from plugs, receptacles and the point where they exit from the appliance.
9. Overloading - Do not overload wall outlets, extension cords or multiple sockets, as this can result in a risk

of fire or electric shock.

10. Ventilation - The product must be properly ventilated. Do not place the product on a bed, sofa, or other similar surface. Do not cover the product with any items such as tablecloths, newspapers, etc.
11. Heat - The product should be situated away from heat sources such as radiators, heat registers, stoves, or other products including amplifiers that produce heat. No naked flame sources, such as lighted candles, should be placed on the apparatus.
12. Water and moisture - To reduce the risk of fire or electric shock, do not expose the product to rain, dripping, splashing or excessive moisture such as in a sauna or bathroom. Do not use this product near water, for example, near a bathtub, washbowl, kitchen sink, laundry tub, in a wet basement, or near a swimming pool, or etc.
13. Object and Liquid Entry - Never push objects of any kind into this product through openings, as they may touch dangerous voltage points or short-circuit parts that could result in a fire or electric shock. Never spill liquid of any kind on the product. Do not place any object containing liquid on top of the product.
14. Cleaning - Unplug the product from the wall outlet before cleaning. The cabinet of the subwoofer may be cleaned by dusting with a dry cloth. If you wish to use an aerosol cleaning spray, do not spray directly on the cabinet; spray onto the cloth. Be careful not to damage the drive units.
15. Attachments - Do not use attachments not recommended by the product manufacturers, as they may cause hazards.
16. Accessories - Do not place this product on an unstable cart, stand, tripod, bracket or table. The product may fall, causing serious injury to a child or adult, and serious damage to the product. Use only with a cart, stand, tripod, bracket or table recommended by the manufacturer or sold with the product. Any mounting of the product should follow the manufacturers' instructions and should use a mounting accessory recommended by the manufacturer.
17. Moving the product - A product and cart combination should be moved with care. Quick stops, excessive force and uneven surfaces may cause the product and cart combination to overturn.
18. Un-use periods - The power cord of the device should be unplugged from the outlet during lightning storms or when the apparatus is left unused for a long period of time.
19. Servicing - Do not attempt to service this product yourself, as opening or removing covers may expose you to dangerous voltage or other hazards. Refer all servicing to qualified service personnel.
20. Please remove the power plug from the main power source or wall power source when not in use. When plugged in to a power source, the system is in standby mode, so the power is not entirely cut off.
21. Replacement parts - When replacement parts are required, ensure the service technician has used replacement parts specified by the manufacturer or have the same characteristics as the original part. Unauthorized substitutions may result in fire, electric shock or other hazards.
22. Mains fuses - For continued protection against fire hazard, use fuses only of the correct type and rating. The correct fuse specification for each voltage range is marked on the product.

23. Do not turn up the volume while listening to a section with very low level inputs or no audio signals. If you do, the speaker may be damaged when a peak level section is suddenly played.
24. The only means of completely disconnecting the product from the power supply is by removing the power cord from the wall outlet or the product. The wall outlet or the power cord entry to the product must remain freely accessible at all times while the product is in use.
25. Try to install the product near a wall socket or extension cord and shall be easily accessible.
26. The highest environmental temperature suitable for this product is 40°C.

FCC STATEMENT

1. This device complies with Part 15 of the FCC Rules.

Operation is subject to the following two conditions:

- (1) This device may not cause harmful interference, and
 - (2) This device must accept any interference received, including interference that may cause undesired operation.
2. Changes or modifications not expressly approved by the party responsible for compliance could void the user's authority to operate the equipment.

FCC EXPOSURE STATEMENT:

This equipment complies with FCC radiation exposure limits set forth for an uncontrolled environment. This equipment should be installed and operated with minimum distance 20cm between the radiator & your body

Introduction

Enhance and power your tablet's music and sound. Compact design and small soundbar system with two quality speaker drivers. Broaden your tablet sound range and listen to distinct sound effects. Stream music wirelessly from your smartphone, tablet, or even your notebook. Listen to enhanced amplified sound from your favourite gadgets. Connects to any products with *Bluetooth*[®] wireless technology using A2DP and HFP profiles. Talk and pickup your smart phone calls directly with built-in speaker phone feature. Easy connection with alternative 3.5mm stereo plug for wide range gadget support. Mount your tablet or smart phone in front with quick pull-out tray. Comes with rechargeable battery for portability. Travel with your tablet, or smartphone, and enjoy to enhanced sound everywhere you go.

Features

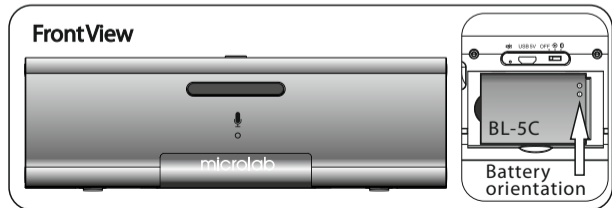
- Wireless music streaming with *Bluetooth*® wireless technology
- Supports A2DP and HFP profiles
- Quality stereo speaker system with built-in amplifier
- Ideal for movies, gaming, music and PC applications
- Clear and uncoloured sound
- Soundbar type design
- Connects to any 3.5mm stereo jack easily e.g., tablet, PC, notebook, Mp3/Mp4, CD/DVD player, etc.
- Rechargeable battery with easy replacement

EN

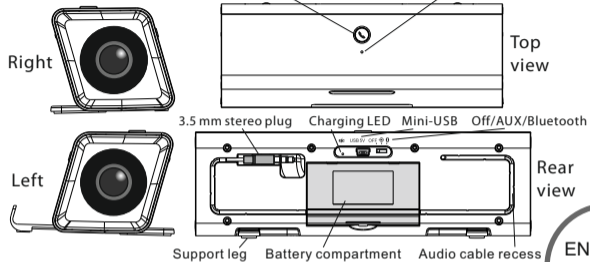
5

Packing List

- | | |
|-------------------------------|------|
| • MD212 speaker | 1 pc |
| • USB cable | 1 pc |
| • Rechargeable battery, BL-5C | 1 pc |
| • User manual | 1 pc |



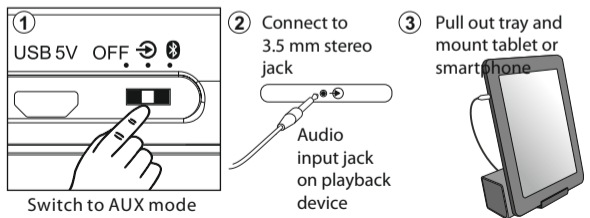
Illustrations



EN

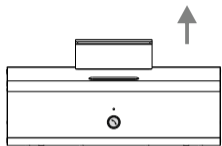
6

Connection (AUX)



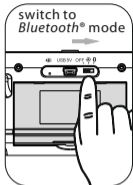
Connection (Bluetooth®)

① Pull tray out



Top view

② switch to Bluetooth® mode



③ Turn on Bluetooth® pairing mode:
a) Pairing timeout
b) Change pairing smartphone



or

Pairing mode: Blue LED blink rapidly

EN

7

④



Smartphone:
Turn on
Bluetooth®
mode

⑤



Scan for devices

⑥



Pairing
process

⑦



Pair with the
speaker

⑧



Paired
not
connected

⑨



Select "connect" with speaker

EN

8

10

Connected to speaker



Blue LED illuminates steadily

11



Commence music playback

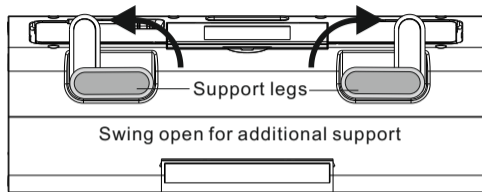
12 Place the smartphone or tablet upright on the tray



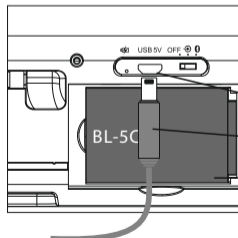
smartphone and tablet not included in package. Trademarks and logos belong to their respective owners.



Bottom view



Charging



USB charging LED (red when charging / illumination off - full charged)

Mini-USB

USB cable

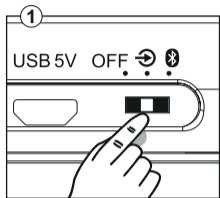
BL-5C type Lithium battery (Battery to remain in compartment during usage)

1) Charge for 4 hours before initial use

2) During use, charge till red LED turns off

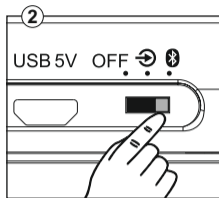
Power from PC / Notebook / USB hub

Operation



AUX mode: from 3.5 mm plug

or

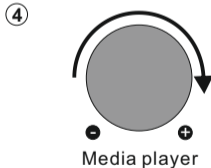


Bluetooth® mode: initiate pairing and connection

EN
11



Start playback on media player such as smartphone, tablet, iPad, notebook or Mp3/Mp4 player



Media player

Technical Information

Amplifier

Output power:	2 Watt RMS
Power distribution:	1 Watt x 2 RMS
Harmonic distortion:	< 0.5% 1 W 1 kHz
Frequency response:	150 Hz - 20 kHz
Signal/Noise ratio:	> 75 dB
Separation:	> 45 dB

Speaker

Driver type:	1.5" x 2
Driver rated power:	3 Watt x 2, 4 Ohm

Interface

Input:	3.5mm stereo, Mini-USB
Bluetooth® wireless technology	Bluetooth® v2.1, A2DP, HFP

Power

Battery, BL5C	3.7 V / 1000 mAh Lithium rechargeable battery
---------------	---

EN
12

Frequently Asked Questions

Question	Answer
Pairing failed	Ensure device supports Bluetooth® v2.1 and above
How to tell Pairing is successful?	Blue LED is lit steadily, please start the music playback
Battery charging and use	Initial charge for 4 hours, and keep battery inside during use