

***EXHIBIT C***  
***User Manual***



## **User's Manual**

**FreeKit 23F1**

*One-Channel*

**Radio Frequency Wireless Mouse and Keyboard**

**Windows 95/ 98/ 2000/NT compatible**

**For IBM AT or compatible PC**

# **Table of Contents**

## **Package Contents**

## **Basic Installation**

1. Install Batteries to Your Mouse
2. Install Batteries to Your Keyboard
3. Install RF Receiver
4. Set up the RF Communication ID Code

## **Advanced Installation**

1. Install the Wireless Mouse/Keyboard Driver
2. Set up Key Functions of Your Wireless Mouse
3. Set up Key Functions of Your Wireless Keyboard
4. Use Functional Multimedia Hot Keys of Your Wireless Keyboard

## **Battery Low Indicator and Battery Replacement**

1. Battery Low Indicator
2. Battery Replacement
3. Set up ID Code Again

## **Trouble Shooting**

## **Technical Specification**

## **Package Contents**

You should find following items in the packing box.

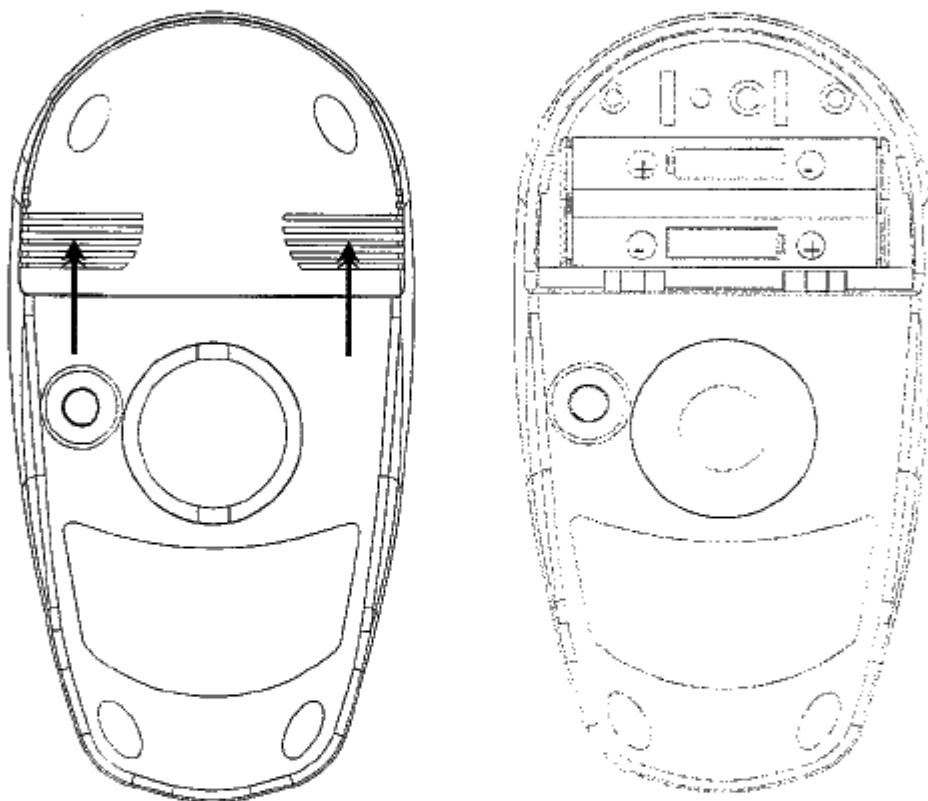
- Wireless mouse (1)
- Rolling ball for wireless mouse (1)
- Wireless keyboard (1)
- RF receiver (1)
- This user's manual (1)
- Driver (1)
- AAA size batteries for mouse (2)
- AAA size batteries for keyboard (2)

## Basic Installation

Please follow the steps one by one to finish the installation.

### 1 Install Batteries to Your Mouse

- 1.1 Remove battery cover of the mouse.

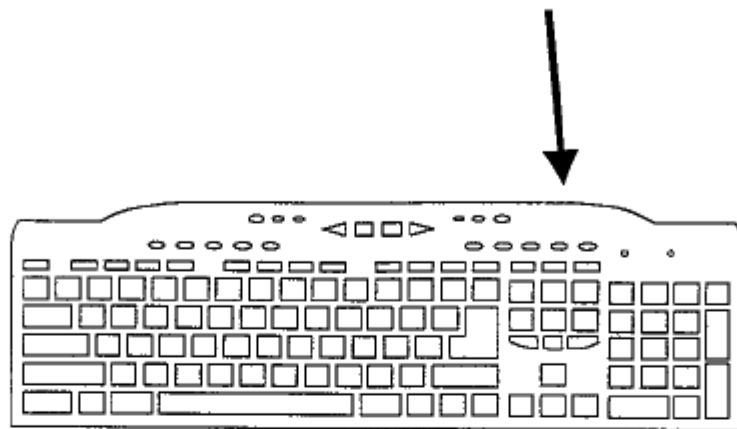


- 1.2 Insert attached two AAA size (smaller ones) batteries into battery slot, and make sure the batteries are installed in correct pole direction.
- 1.3 Click the cover back, and make sure it is well mounted.
  - Note : Please use alkaline batteries for longer battery life.

## 2 Install Batteries to Your Keyboard

### 2.1 Remove battery cover of the keyboard.

Inserting the battery at the bottom of keyboard



2.2 Insert attached two AAA size batteries into battery slot, and make sure the batteries are installed in correct pole direction.

2.3 Click the cover back and make sure it is well mounted.

- Note : Please use alkaline batteries for longer battery life.

## 3 Install RF Receiver

3.1 Turn your computer off.

3.2 Unplug your original mouse and keyboard off from your computer.

3.3 Plug the mouse connector (green color) to the computer's mouse PS/2 or USB port.

3.4 Plug the keyboard connector (purple color) to the computer's keyboard PS/2 or USB port.

3.5 Turn your computer on.

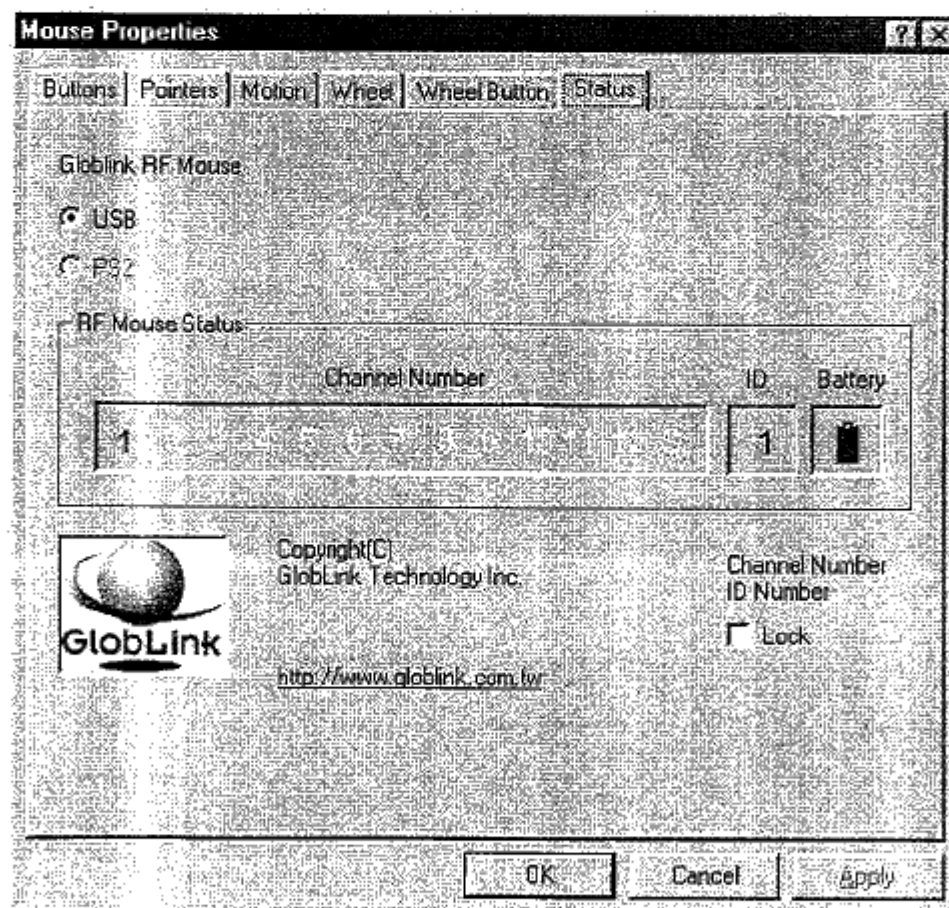
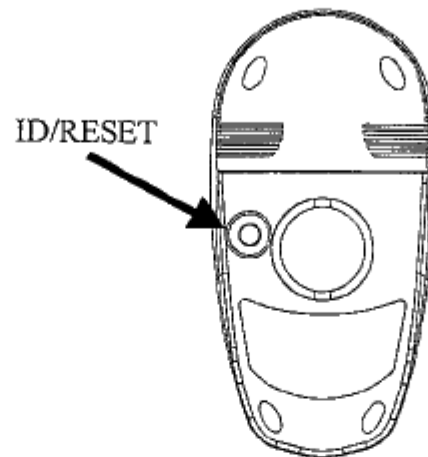
- Note : Do not connect or disconnect the receiver unit while the computer is in operation. It may damage the computer and/or communication ports.

## 4 Set up the RF Communication ID Code

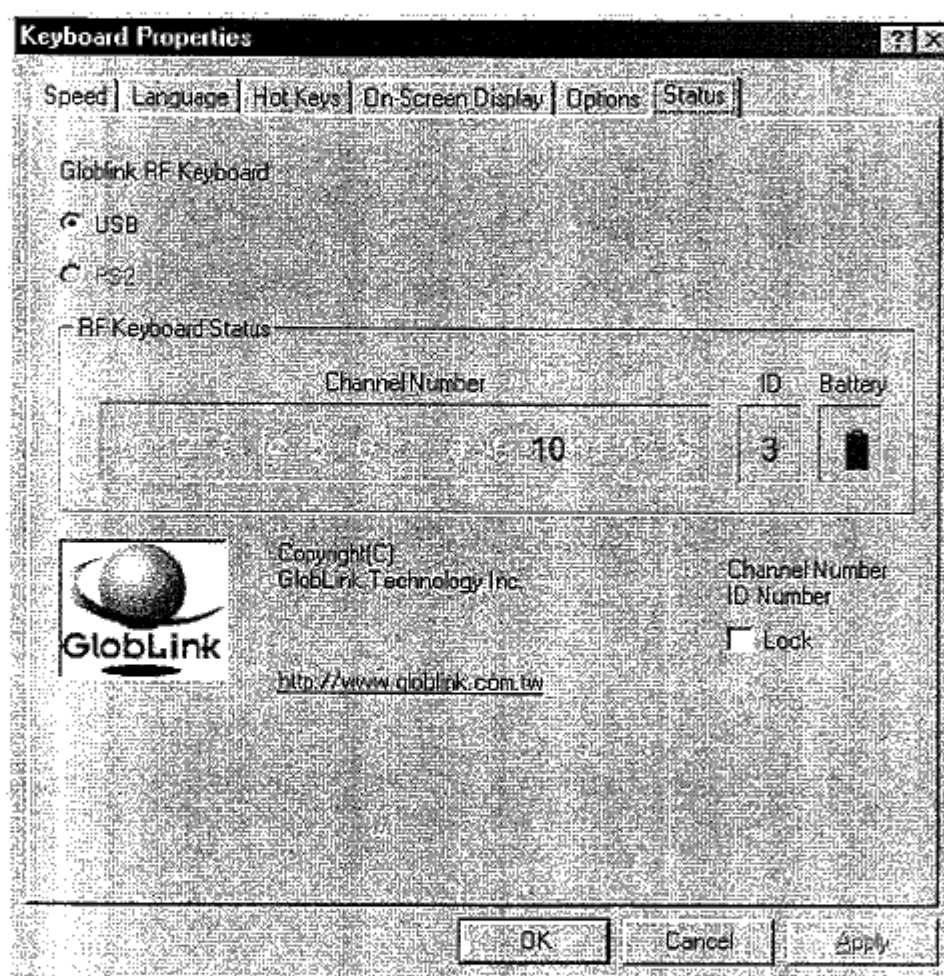
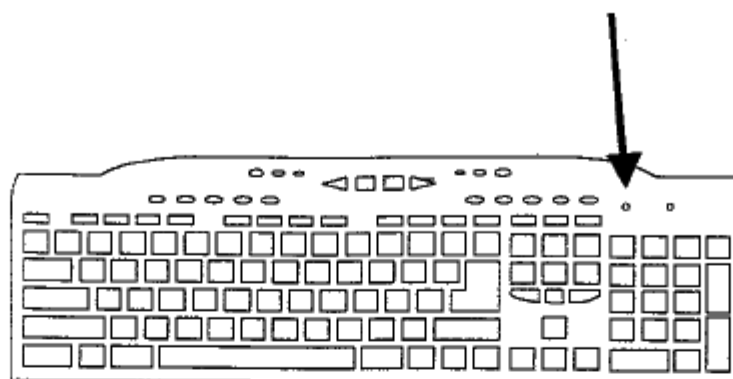
To receive correctly the RF signals sent by transmitters (wireless mouse and/or keyboard), the RF receiver must be set up to be with the same ID codes as the transmitters. Please follow steps below.

4.1 Press the "setup" button (red color) at bottom of the RF receiver. The "Data status" LED on the RF receiver will become amber color.

- 4.2 Point the mouse to the receiver (within 1 ft) and press the button at bottom of the mouse. The "Data status" LED on the RF receiver will become red color.
- Note : Your wireless mouse has 16 ID codes. It will generate an ID code automatically each time the batteries are installed.



- 4.3 Point the keyboard to the receiver (within 1 ft) and press "ID/RESET" key on the keyboard. ID will run randomly, channel will plus 1



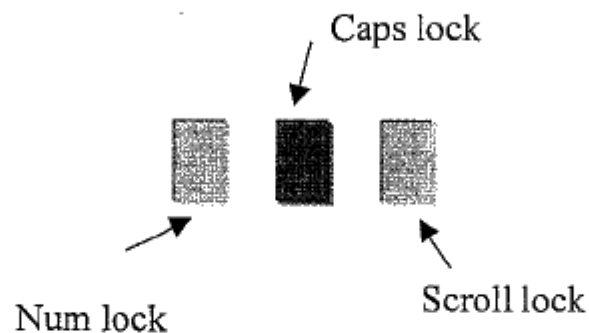
- Note : Your wireless keyboard has 16 ID codes. It will generate an ID code automatically each time the batteries are installed.

The basic installation is completed now. And, your RF wireless mouse & keyboard set is ready for use. To take advantage of all extra features of the wireless mouse & keyboard set, please follow the procedures in Advanced Installation to complete all installation and setting.

## Advanced Installation

### 1 Install the Wireless Mouse/Keyboard Driver

- 1.1 Insert the attached driver disk (or CD) into your floppy (or CD) driver.
- 1.2 Execute the “setup.exe” program and follow the on-screen instructions to complete the installation. You can choose to install only mouse driver, or only keyboard driver, or both 2 drivers.
- 1.3 After the installation is completed, re-start your computer. You will see icons as follows on the Windows Taskbar. The installation is successful !



- Note : Above icons indicate status of the “Num lock”, “Caps lock” and “Scroll lock” of the keyboard. The icons may be in gray color to indicate “Unlock”, or in red color to indicate “Lock”.

### 2 Set up Key Functions of Your Wireless Mouse

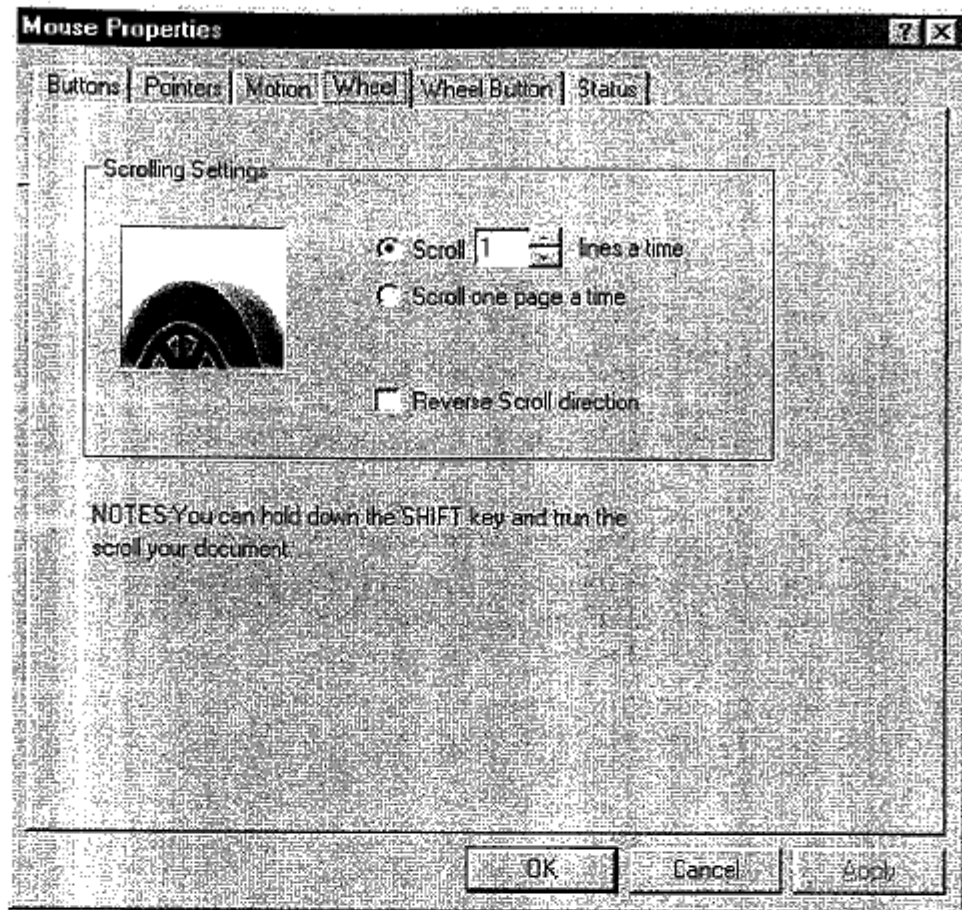
You can enter the Set-up windows by double-clicking the mouse icon on Windows Control Panel. The wireless mouse driver is developed for linking with the original mouse driver in your Windows System. Therefore, there are 2 groups of properties pages on the Set-up Window.

2-1 Original properties pages of the mouse driver in your Windows system : This group may includes different properties pages, and, they may be not in English, according to your Windows system.

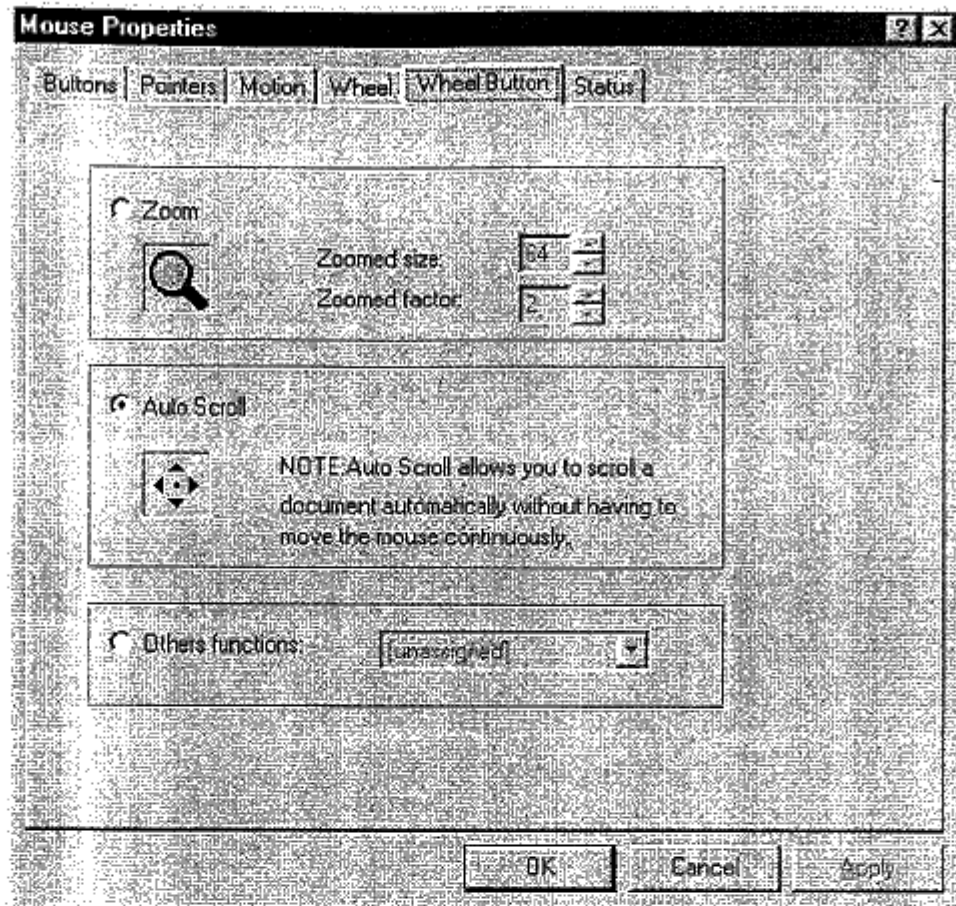
- Button : Set up left-hand or right-hand use, and adjust double-click timing.
- Cursor : Set up style of the pointer.
- Move : Set up speed of the pointer and length of the dragging tail.

2-2 Unique properties pages of your wireless mouse driver : This group includes following 2 properties pages, and, they are all in English.

- Wheel : Set up movement of the scroll.



- Wheel Button : Select Zoom or Auto Scroll function or other functions such as internet browser.



### 3 Set up Key Functions of Your Wireless Keyboard

You can enter the Set up Windows by double-clicking the keyboard icon on Windows Control Panel. The wireless keyboard driver is developed for linking with the original keyboard driver in your Windows System. Therefore, there are 2 groups of properties pages on the Set-up Window.

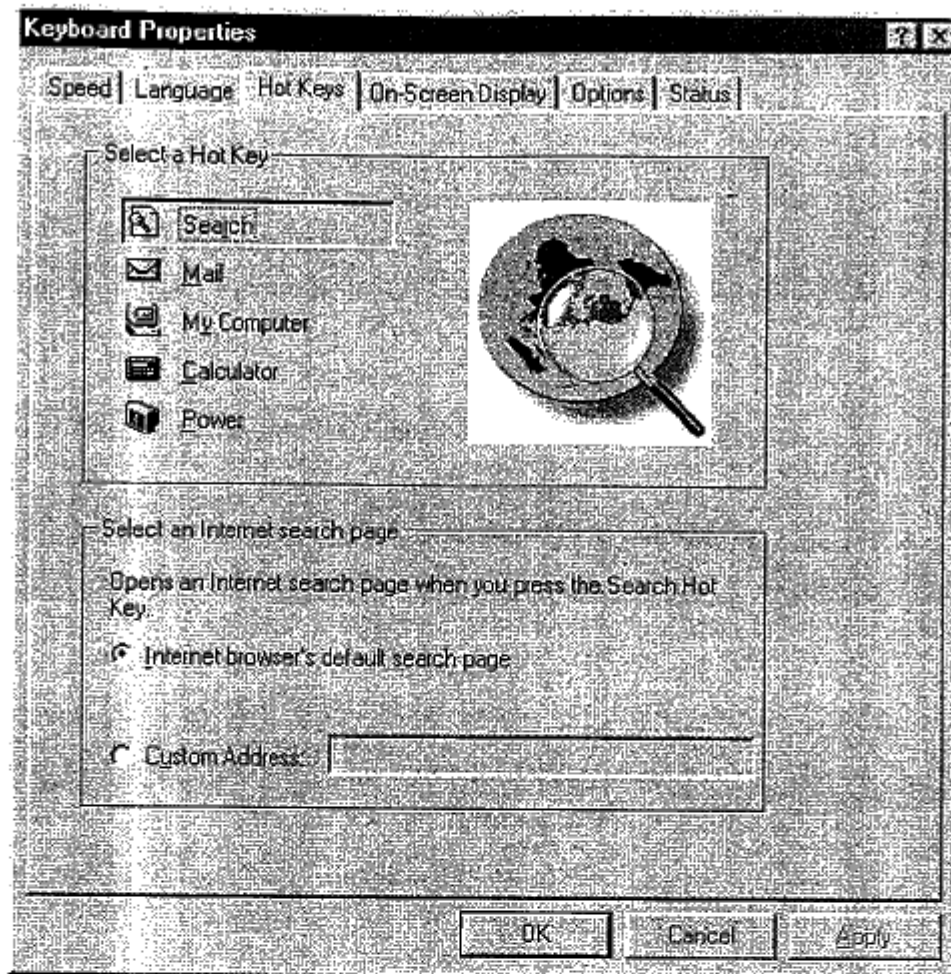
#### 3-1 Original properties pages of the keyboard driver in your Windows system :

This group may includes different properties pages, and, they may be not in English, according to your Windows system.

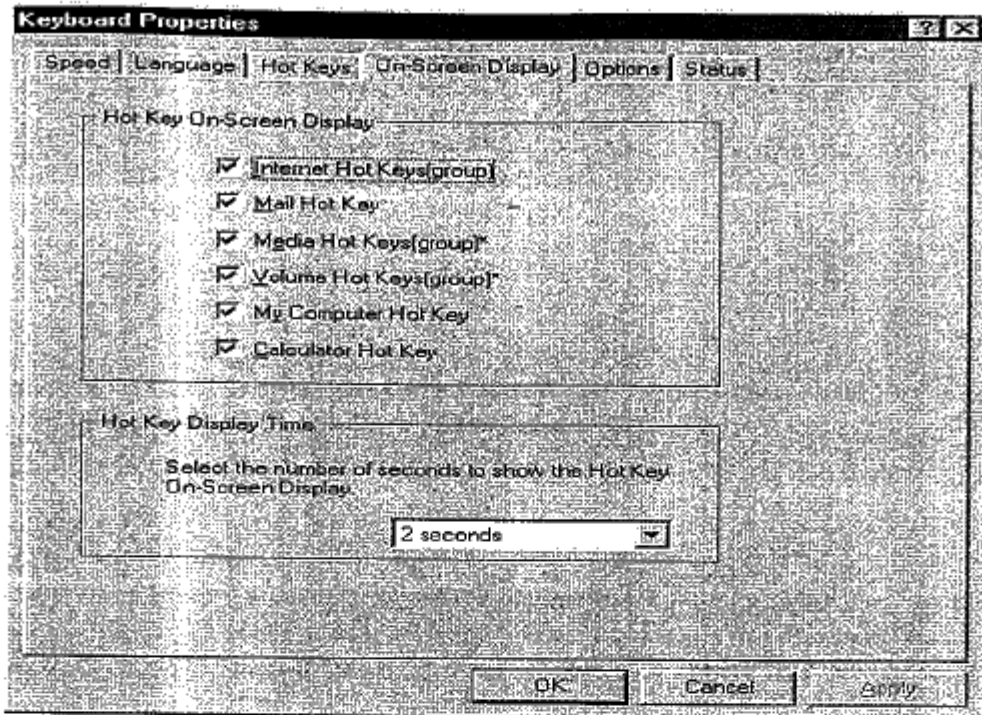
- Speed : Set up character repeat delay, character repeat rate and cursor blink rate.
- Language : Display installed keyboard languages and layouts , and set up default language.

#### 3-2 Unique properties pages of your wireless keyboard driver : This group includes following 3 properties pages, and, they are all in English.

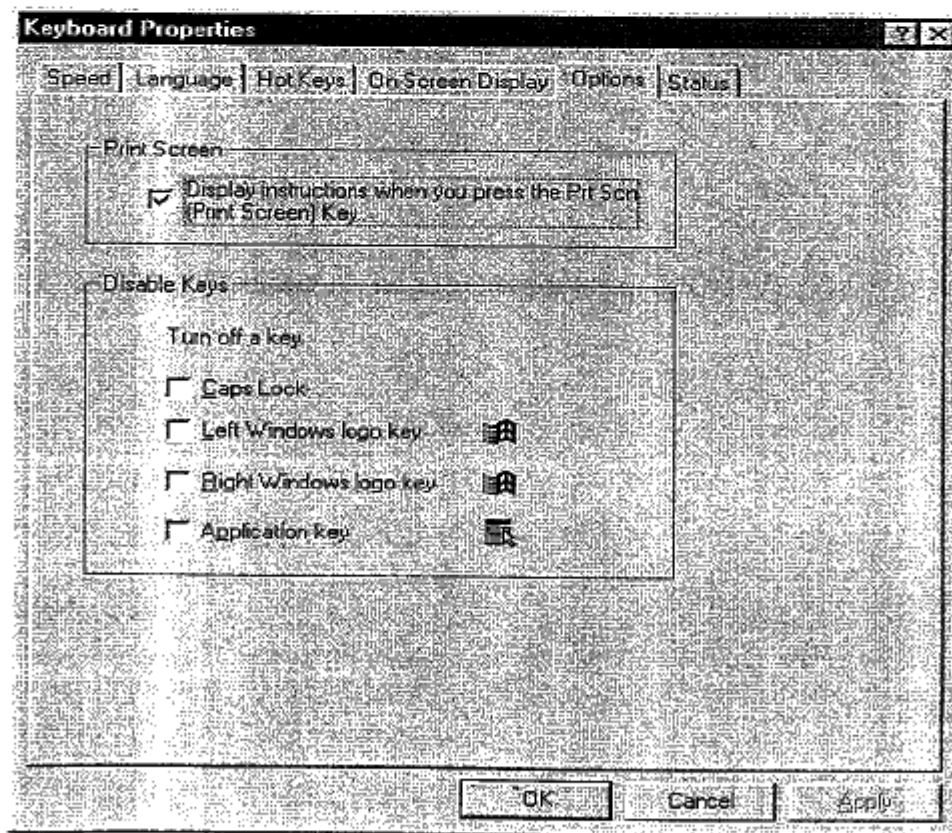
- Hot Keys : Set up "Search", "mail" and "My Computer" keys function.



- On-Screen Display : Select 1) whether you prefer the key icon and key name be displayed on the screen when you press the hot keys, and, 2) the display time period.



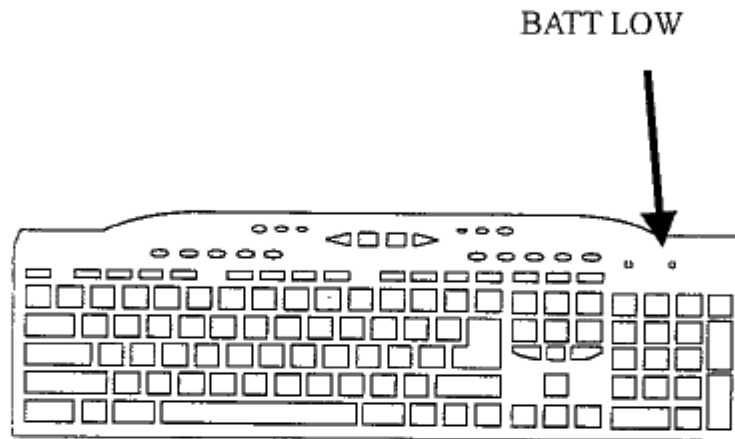
- Options : Select 1) whether you prefer the instructions be displayed when you press the "PrtSc" (Print Screen) key, and, 2) whether you prefer to turn off some keys.



## Battery Low Indicator and Battery Replacement

### 1 Battery Low Indicator

If the voltage of batteries inside the mouse and/or keyboard is too low, the “Batt. Low” LED on the RF receiver will blink. Then, you need to replace batteries. Please use alkaline batteries for longer battery life. The LED light in green color stands for mouse, in red stands for keyboard, and, in amber color stand for both mouse and keyboard.



### 2 Battery Replacement

Please follow the instructions in “Basic Installation” chapter to re-install new batteries to your mouse and/or keyboard.

### 3 Set up ID Code Again

Battery re-installation will make the transmitters (mouse or keyboard) generate automatically a new ID code. Please follow the instructions in “Basic Installation” chapter to set up again the RF communication ID code.

## Trouble Shooting

- Be sure you have connected the mouse connector (green color) and keyboard connector (purple color) of RF receiver correctly and firmly onto the computer's mouse PS/2 or USB port and keyboard PS/2 or USB port respectively.
- Be sure you have installed the mouse batteries and keyboard batteries correctly.
- Check the "Batt. Low" (Battery Low) LED indicator on your RF receiver. If it blinks in green color, please replace the mouse batteries. If it blinks in red color, please replace the keyboard batteries. If it blinks in amber color, please replace both mouse and keyboard batteries.
- Your wireless mouse or keyboard has an energy saving feature which will switch off automatically.
- Please avoid putting mouse, keyboard and/or receiver on a steel desk. This may shorten the RF transmission and/or receiving distance.
- Please avoid putting mouse, keyboard and/or receiver within 15 cm from computer or bottom part of monitor which may transmit noise interfering RF transmission and/or receiving.
- Be sure your mouse and keyboard are within 6 feet distance from RF receiver.
- Be sure your operating system is MicroSoft Windows 95/98/ME. This wireless mouse & keyboard set does not support other operating systems.

**Copyright & Regulatory Information**

This manual and software described in it are copyrighted with all rights reserved. This manual may not be copied, in whole or in part, without written consent. All product names are trademarks and or registered trademarks of their respective companies.

**FCC Statement**

This equipment has been tested and found to comply with the limits for a Class B digital device, pursuant to Part 15 of the FCC Rules. These limits are designed to provide reasonable protection against harmful interference in a residential installation. This equipment generates, uses and can radiate radio frequency energy and, if not installed and used in accordance with the instructions, may cause harmful interference to radio communications. However, there is no guarantee that interference will not occur in a particular installation. If this equipment does cause harmful interference to radio or television reception, which can be determined by turning the equipment off and on, the user is encouraged to try to correct the interference by one or more of the following measure:

- Reorient or relocated the receiving antenna.
- Increase the separation between the equipment and receiver.
- Connect the equipment into a different outlet circuit from than the receiver.
- Consult an experienced radio/TV technician for help.

***CAUTION: Any changes of modifications not expressly approved by the grantee of this device could void the users authority to operate the equipment.***