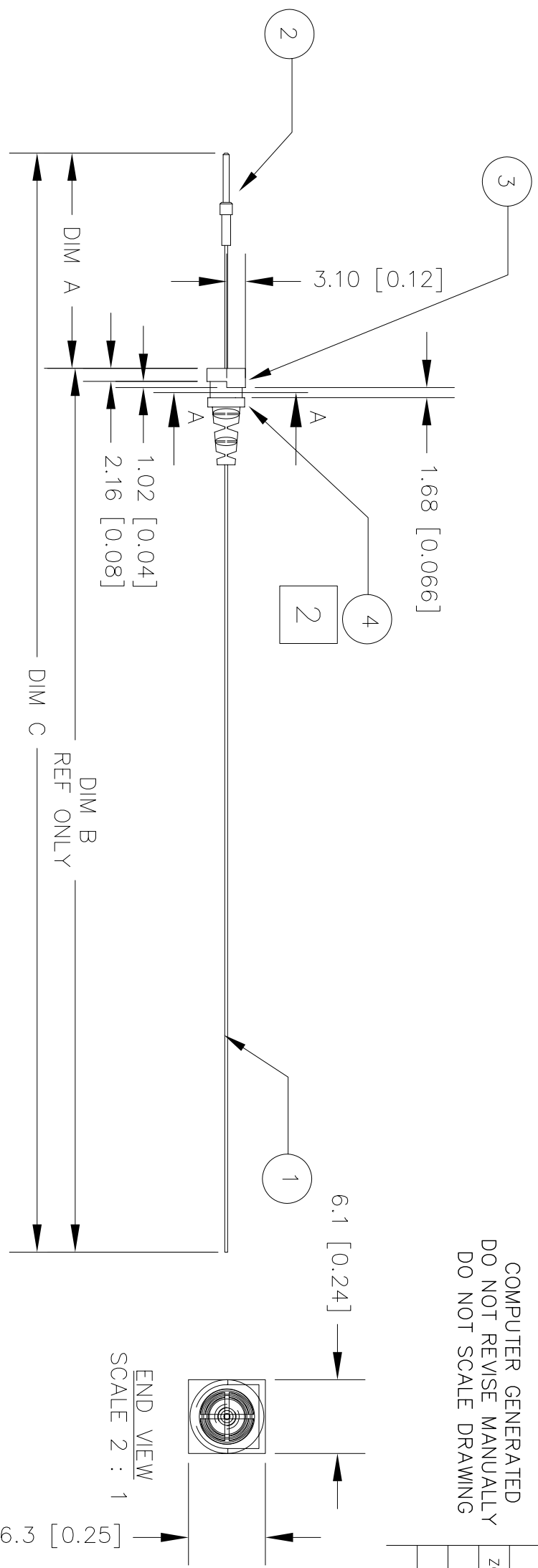


COMPUTER GENERATED
DO NOT REVISE MANUALLY
DO NOT SCALE DRAWING

REVISION COLUMN				
ZONE	REV.	DESCRIPTION	APP'D	DATE
-		CONFIGURATION BASELINE		
A		PRODUCTION RELEASE		



END VIEW
SCALE 2 : 1

SECTION A-A
SCALE 4 : 1

6.3 [0.25]

R2.64 [R0.104]

WIRING LENGTH TABLE

VARIATION NO.	ASSY TYPE	FREQUENCY	DIM A	DIM B	DIM C
T1SP0200-001	CANADIAN	426.787500Mhz	35.6 [1.40]	146.1 [5.75]	181.6 [7.15]

5. PART TO BE SQUARE ON TOP TO FIT HOLE DIMENSIONS AND LOOK LIKE THIS:

4. ANCHOR MOLDING ELASTOMER HAS A FLAMMABILITY GREATER THAN 300 DEGRESS C PER ASTM-D-1929.

3. JACKETING MATERIAL MUST CONFORM TO STD. UL 1581 AND CONTAIN FIRE RETARDANTS.

2. THE STRAIN RELIEF BUSHING SHOULD HAVE A PULL STRENGTH RATING EQUAL TO OR GREATER THAN 20.0N [4.5 POUNDS] AT 100 CYCLES WITHOUT WIRE CONDUCTOR CONNECTION FAILURE.

1. TRIM AS REQUIRED TO PRODUCE DIM A,B,C AS SHOWN ON WIRING LENGTH TABLE.

NOTES

THIRD ANGLE PROJECTION		REPLACES DOMINION WIRELESS P/N: 76422. FILE # 764221E1.DWG		CONTRACT	
DIMENSIONS AND TOLERANCES BASED ON ANSI Y14.5 UNLESS OTHERWISE SPECIFIED		DRAWN T. LEPPO 01/10/26		DRAWN M. NOWELL	
ALL DIMENSIONS APPLY AFTER FINISH METRIC DIMENSIONS AND TOLERANCES APPLY IMPERIAL DIMENSIONS AND TOLERANCES FOR REF. ONLY		REV E RELEASED 02/01/24		CHECKED	
TOLERANCES		REFERENCE DRAWINGS		APPROVED	
mm .X	IN .XX	mm .XX	IN .XXX	ANGLES	
± 0.3	± 0.01	± 0.13	± 0.005	± 1.0°	
FINISH N/A		T1FG03XX-001	DWI	USED ON	DATE
		T1FG02XX-001		APPROVED	DATE
		NEXT ASSY		APPROVED	DATE
		APPLICATION			

BILL OF MATERIAL

ITEM	DESCRIPTION	QTY	REF. DESIG.
4	STRAIN RELIEF CRIMP BAND, 2.99 [0.118] OD, 2.16 [0.085] ID, AKG P/N 44H007 OR APPROVED EQUIV.	1	
3	ELASTOMER MOLDING COMPOUND, BLACK, 85 DUROMETER AKG P/N A01-7 OR APPROVED EQUIVALENT	A/R	
2	CRIMP PIN, 1.02 [0.040] DIAMETER ICC Inc. P/N 803124-1,-14, -2,-3,-5, -54 OR AMP # 66507-3, -4, 3-66507-0, -1 OR APVD EQUIV.	1	
1	BLACK KEVLAR TINSEL WIRE WITH .019 DIA PVC JACKET AKG PART NUMBER R1K50 OR APPROVED EQUIVALENT	A/R	

119 JOHN CAVANAUGH DR
CARP, ONTARIO
CANADA K0A 1L0

SPECIFICATION, EXTERNAL ANTENNA, TX PPD

DWG SIZE		DWG/PART No.	
B			
FSCM No.	68327	SCALE	1 : 1
PRODUCT/PROJECT	T 1 S P 0 2 0 0	DWG TYPE	SEQUENCE
VARIATION/DOC. TYPE	0 0 0 0	VERSION/EDITION	0 0 0 1
SHEET	1	OF	1