

RSEFBOX_Internal Photos

FCC ID: OQMRSEFBOX

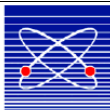
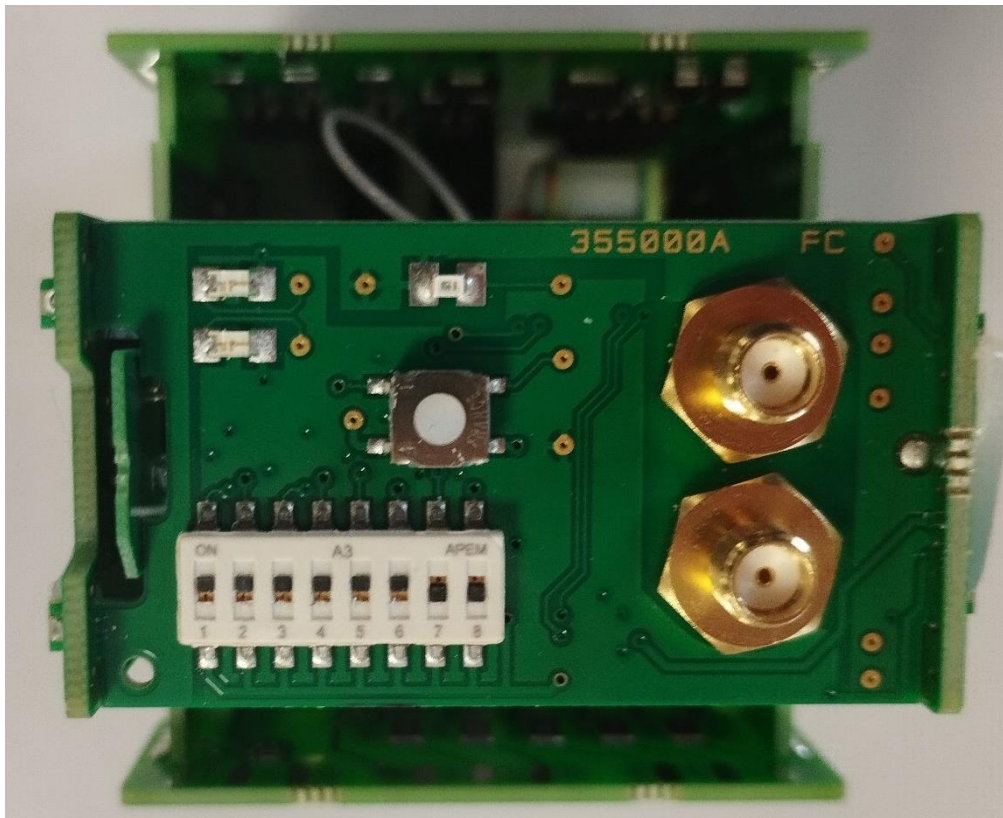
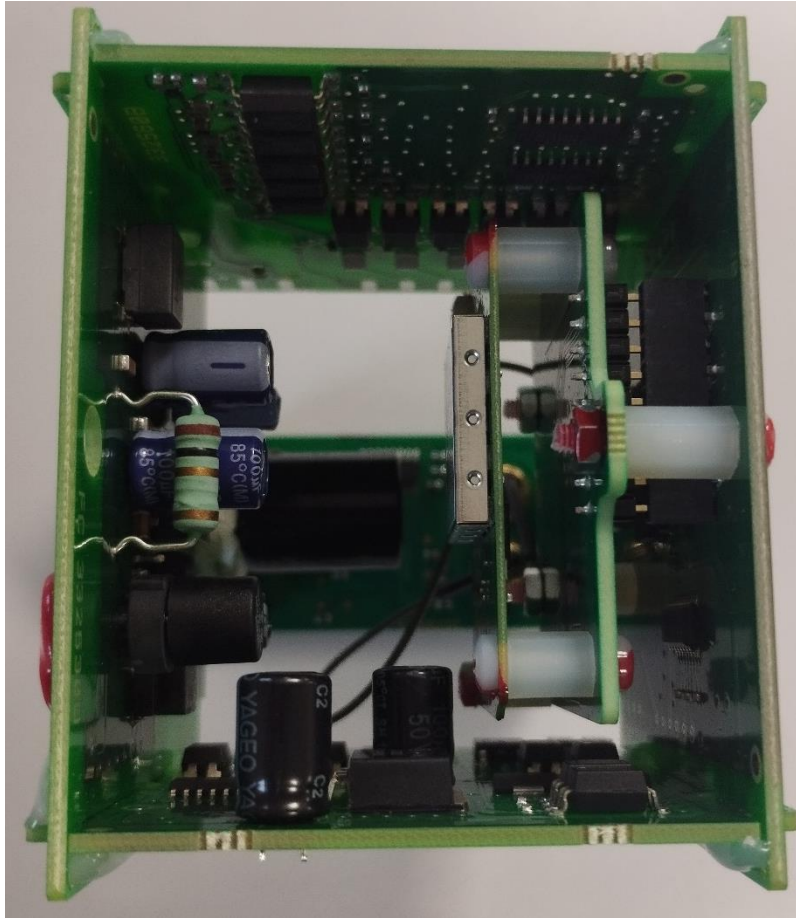
IC: 3393A-RSEFBOX

Revision	Modification	Date	Writer	Approved by
A0	Initial document	21/03/2024	S.Vanremoortere	

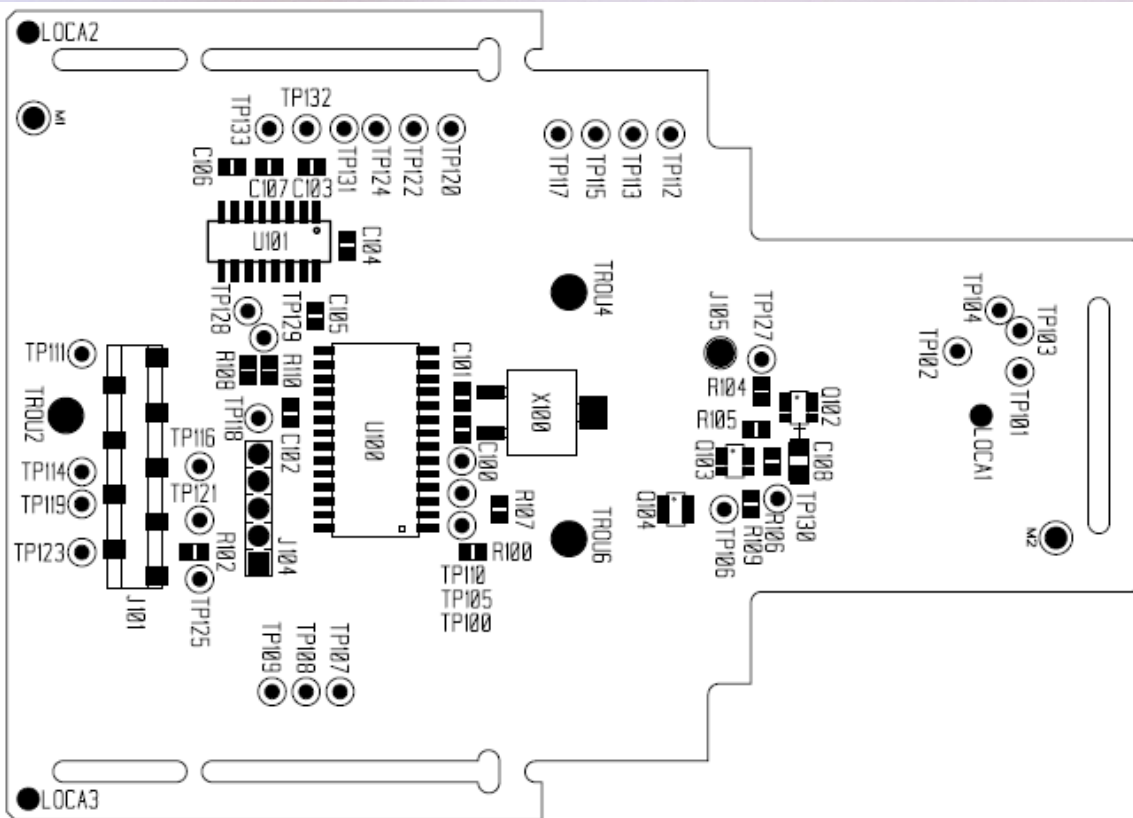
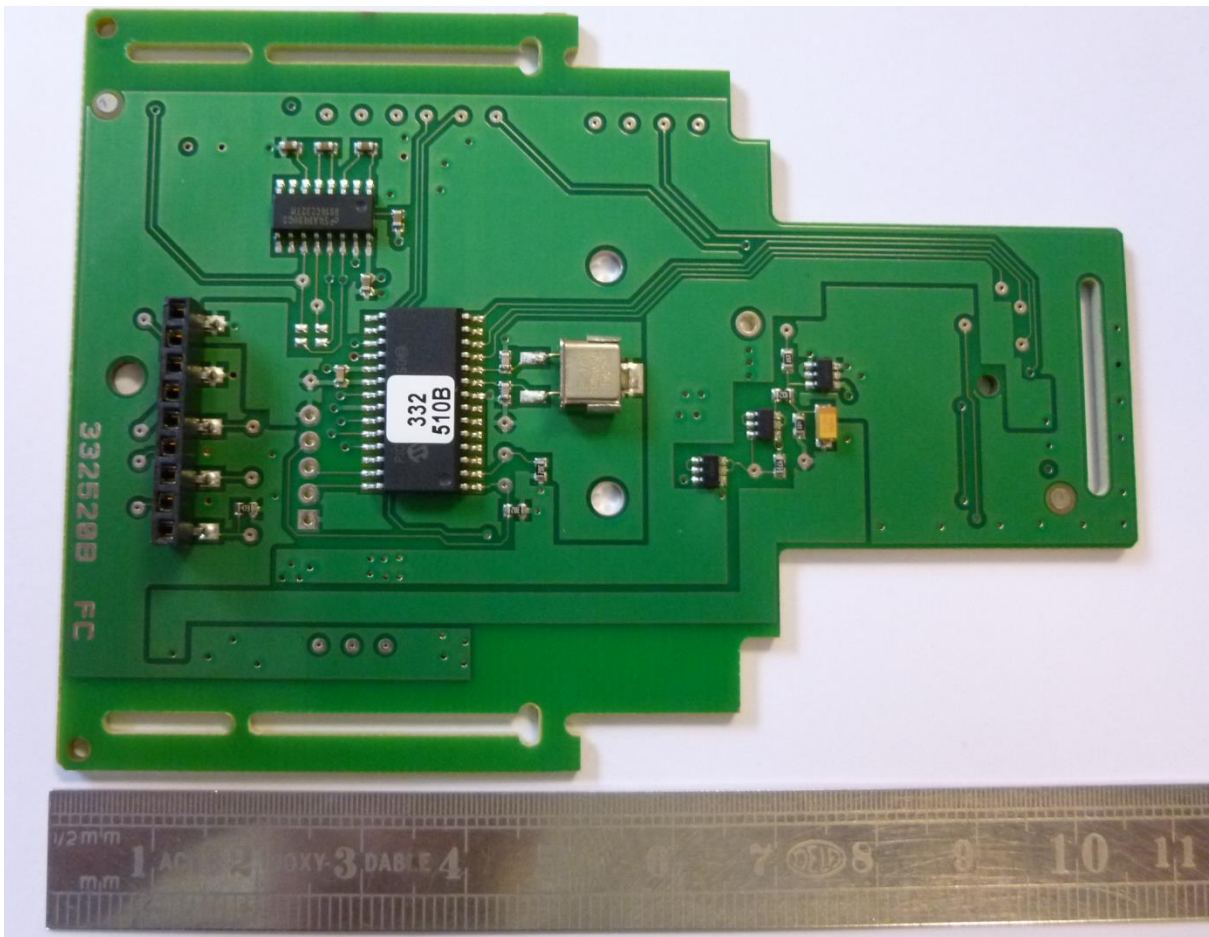
Table of contents

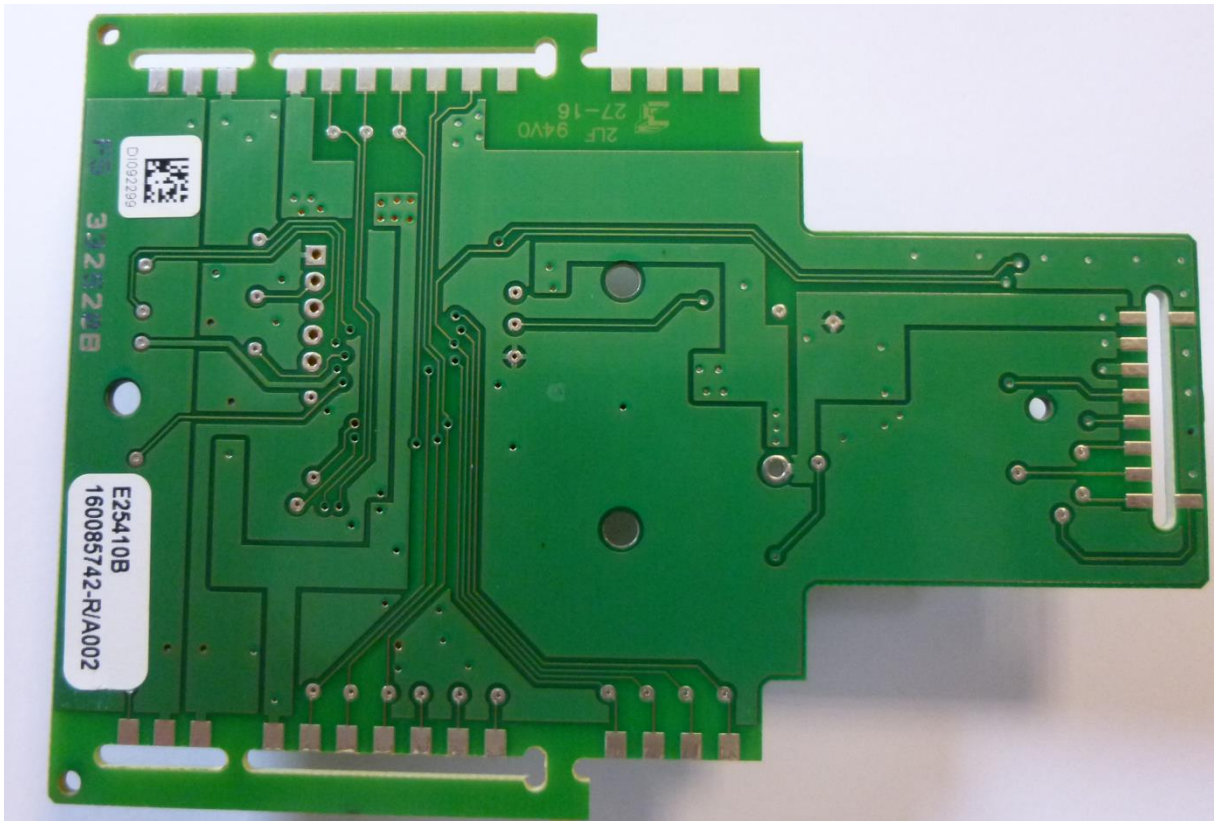
1	RSEF	3
1.1	MICROCONTROLLER BOARD: E25410B-A002.....	4
1.2	POWER AND SIM BOARD: E25420B-A003.....	6
1.3	TOP FACE BOARD : E26890A	8
1.4	EMERGENCY STOP BOARD: E25440B-A002	9
1.5	INPUT OUTPUT BOARD: E25450B-A002	11
1.6	SIM CARD: E25370A-A001.....	13
1.7	RADIO MODULE E26690.....	13
2	E26880A-A002 2.4GHZ RF AMPLIFIER BOARD	14
3	E26850C-A001 PROTECTION BOARD	15

1 RSEF

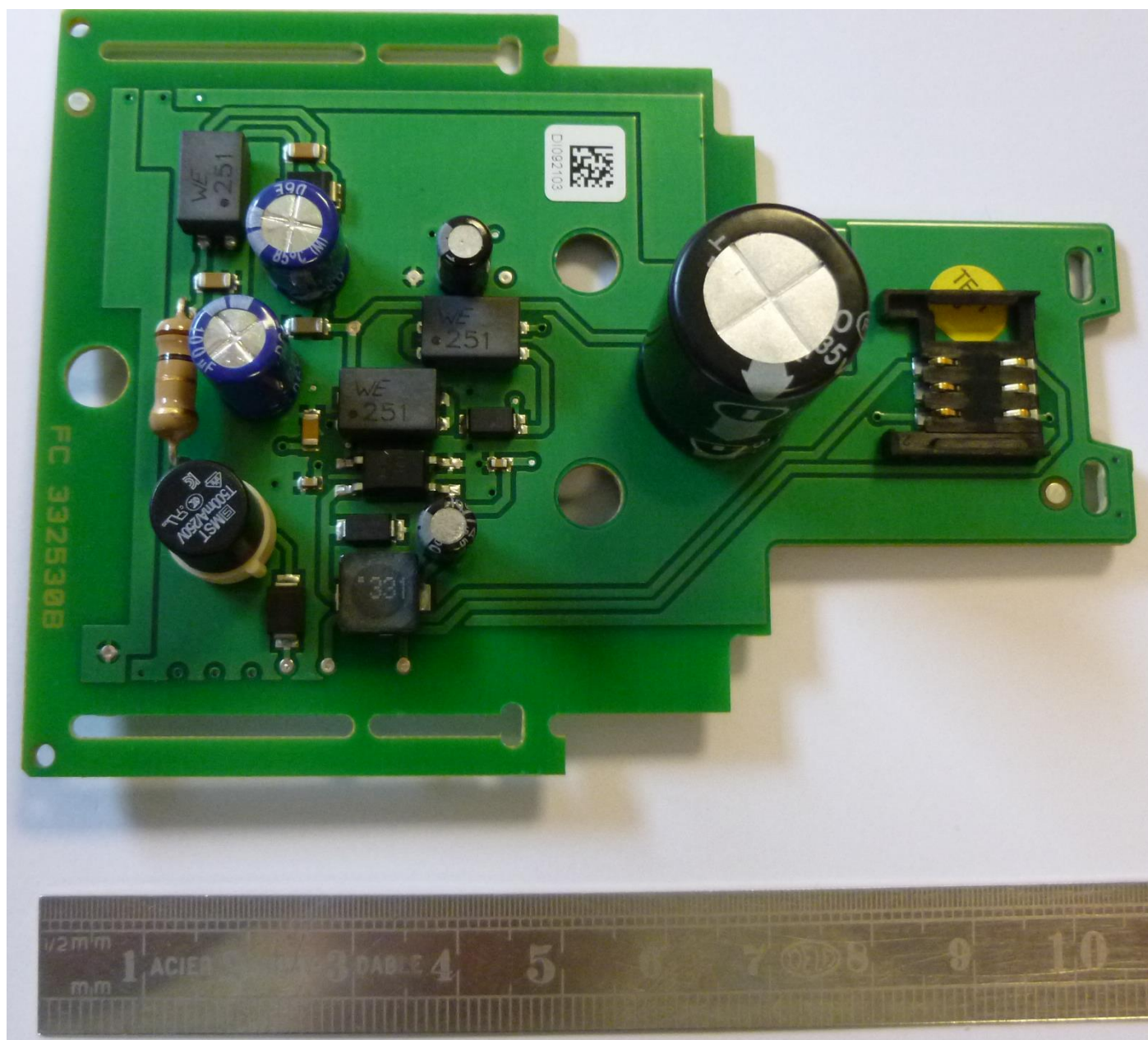


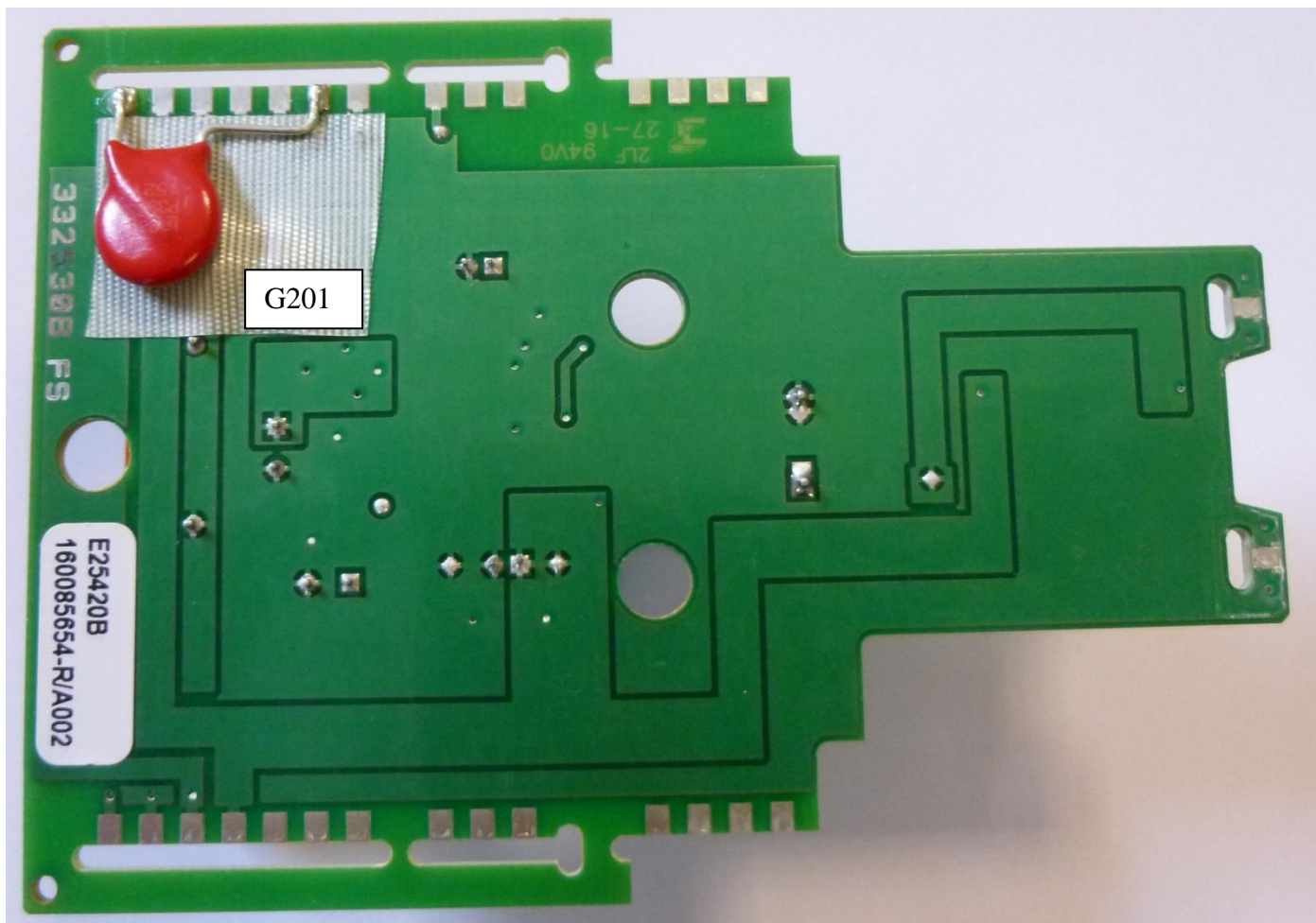
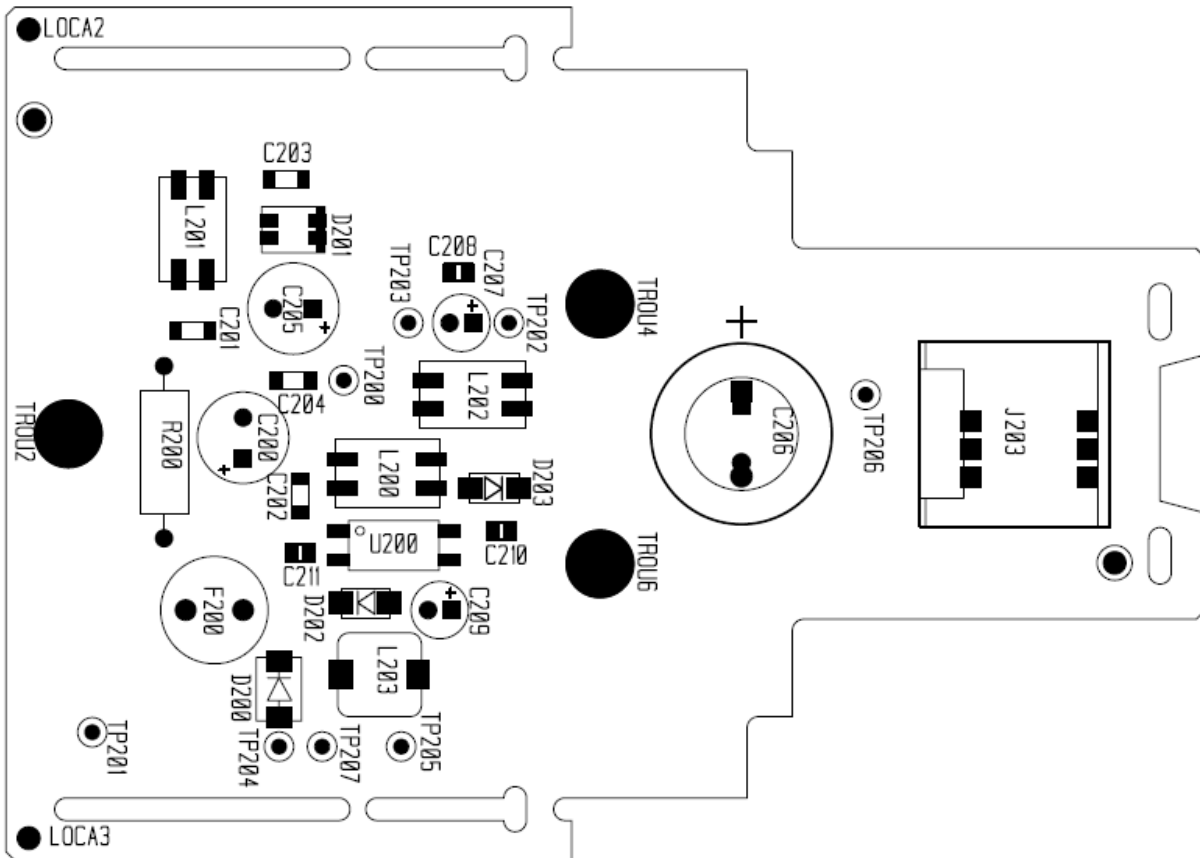
1.1 Microcontroller board: E25410B-A002



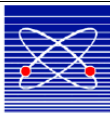
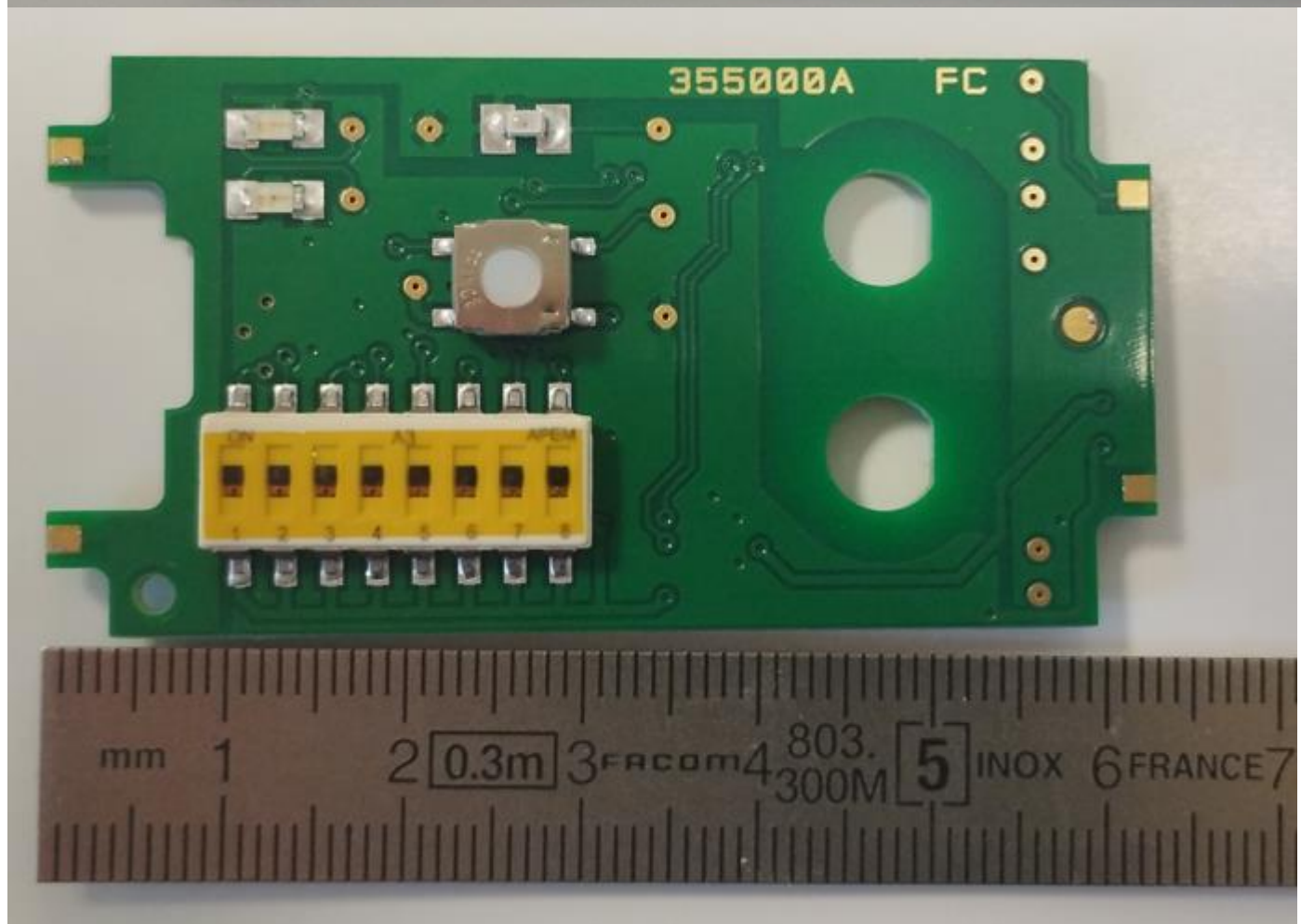


1.2 Power and SIM board: E25420B-A003

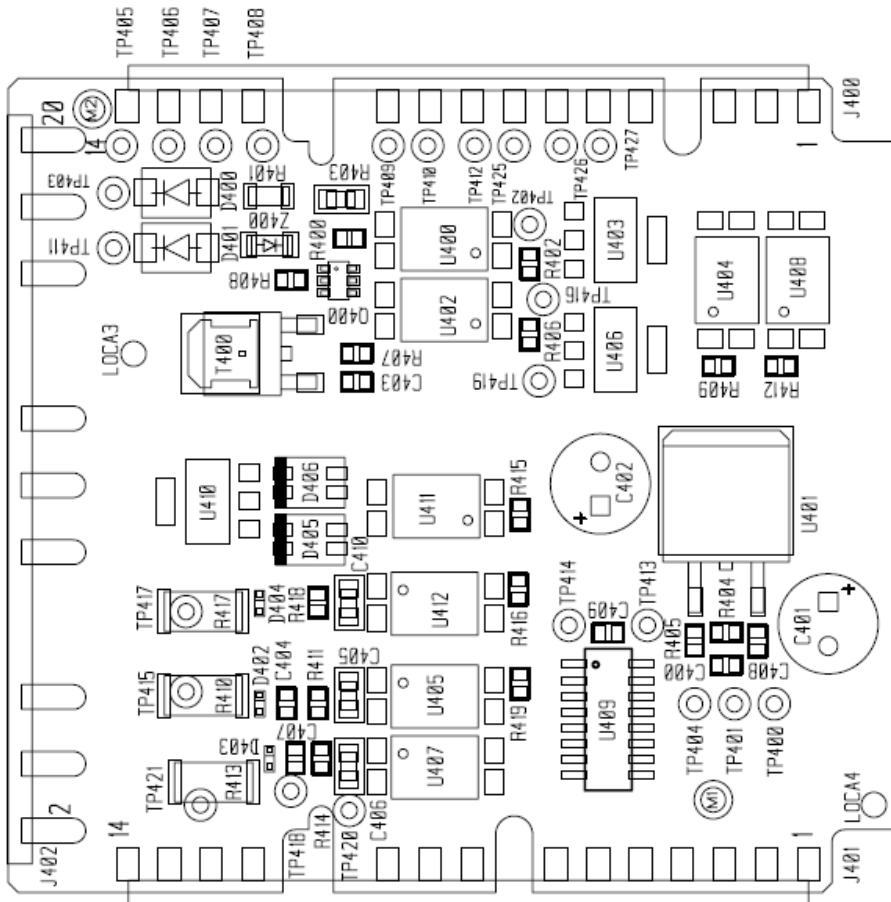
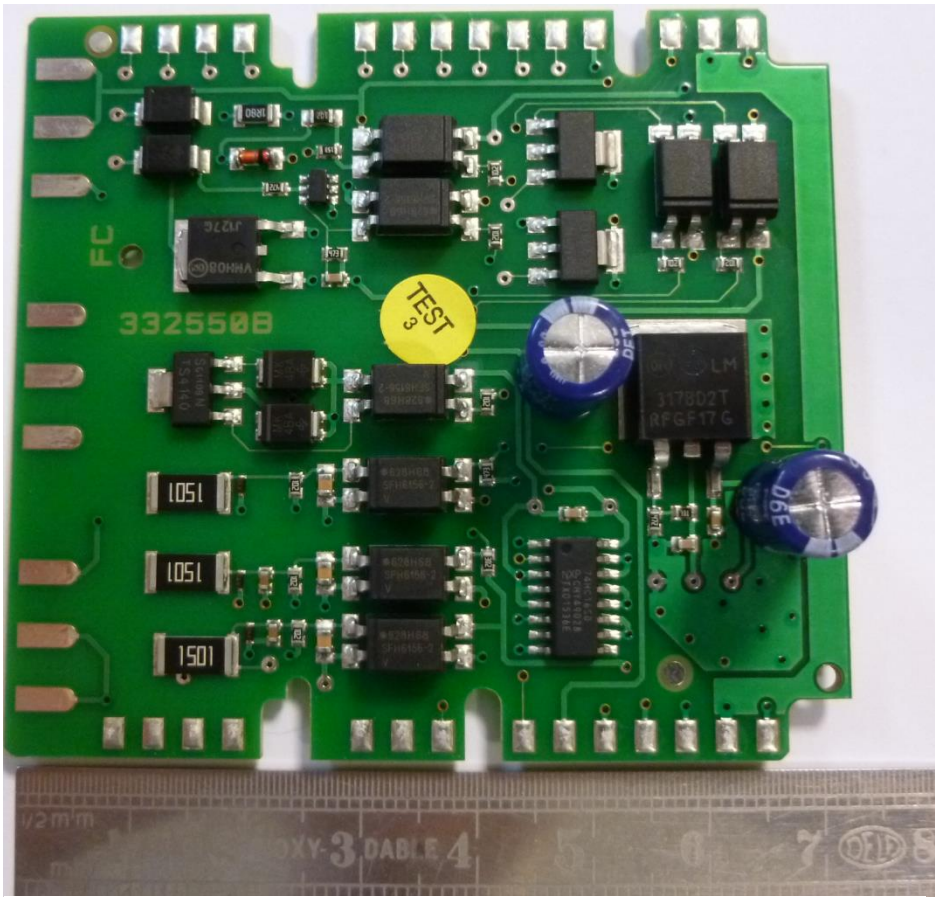


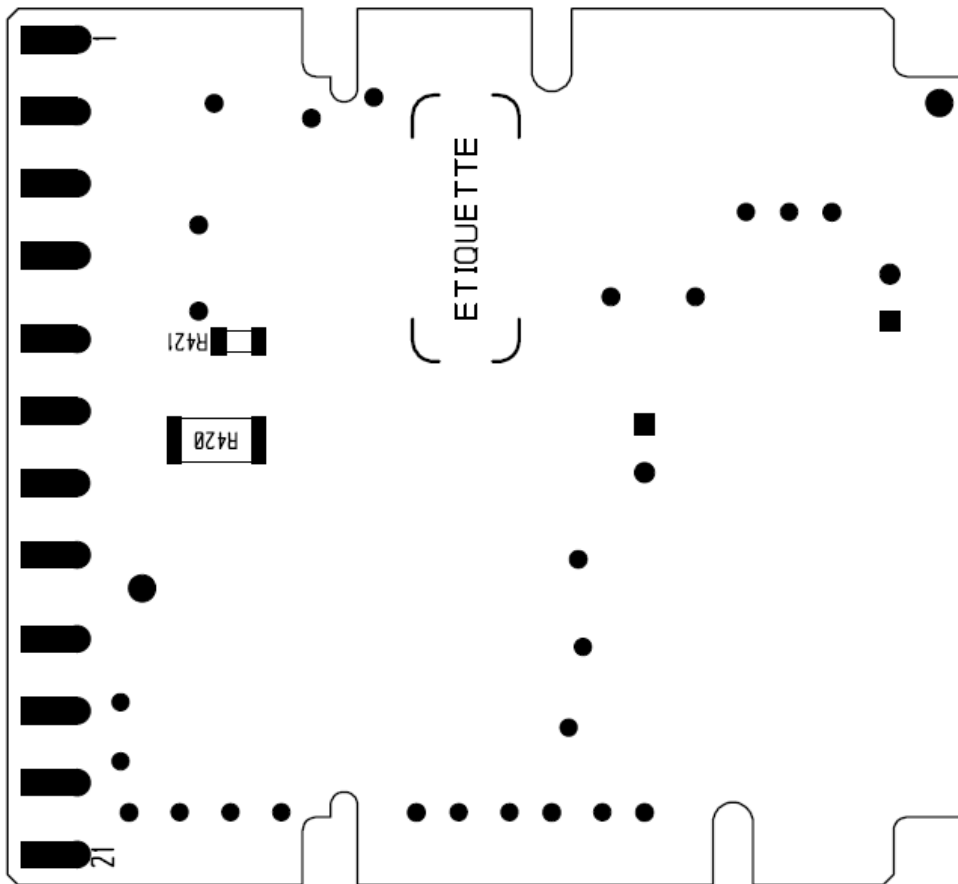
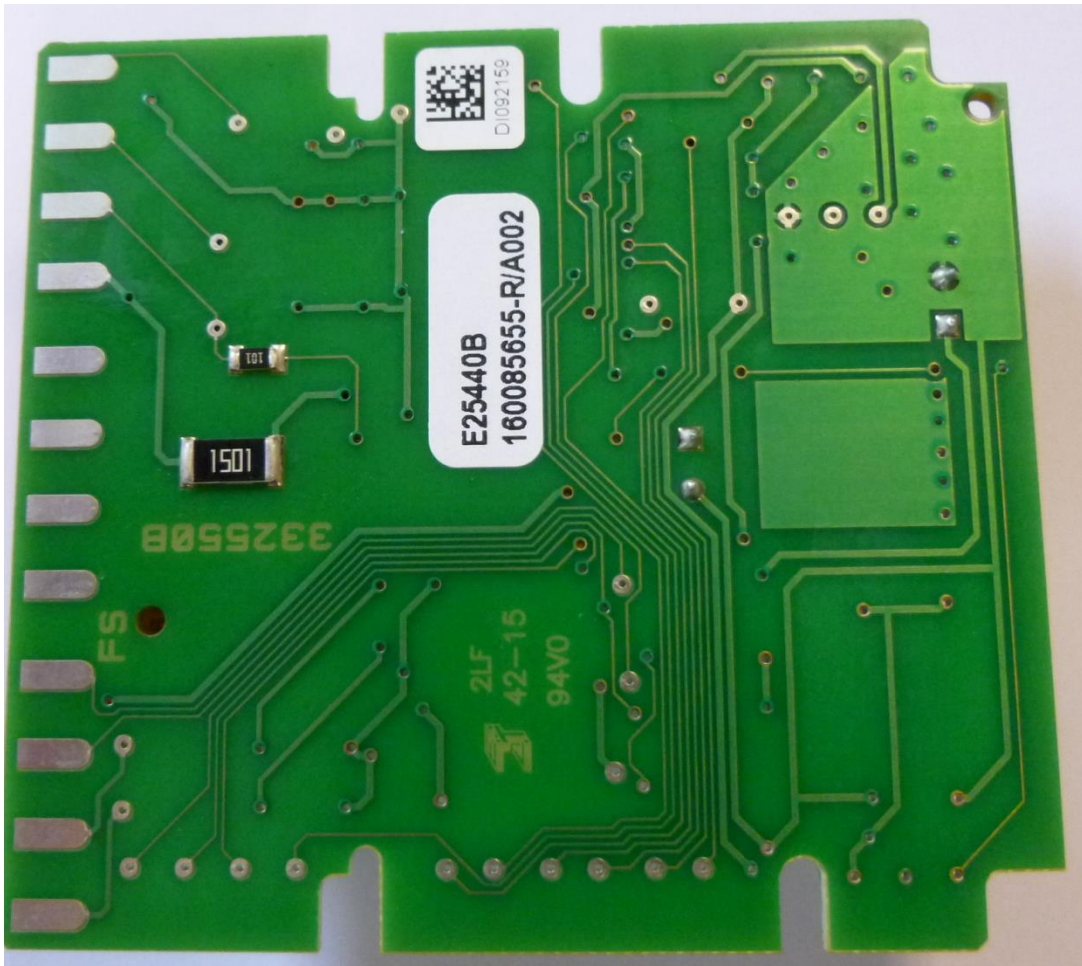


1.3 Top face board : E26890A

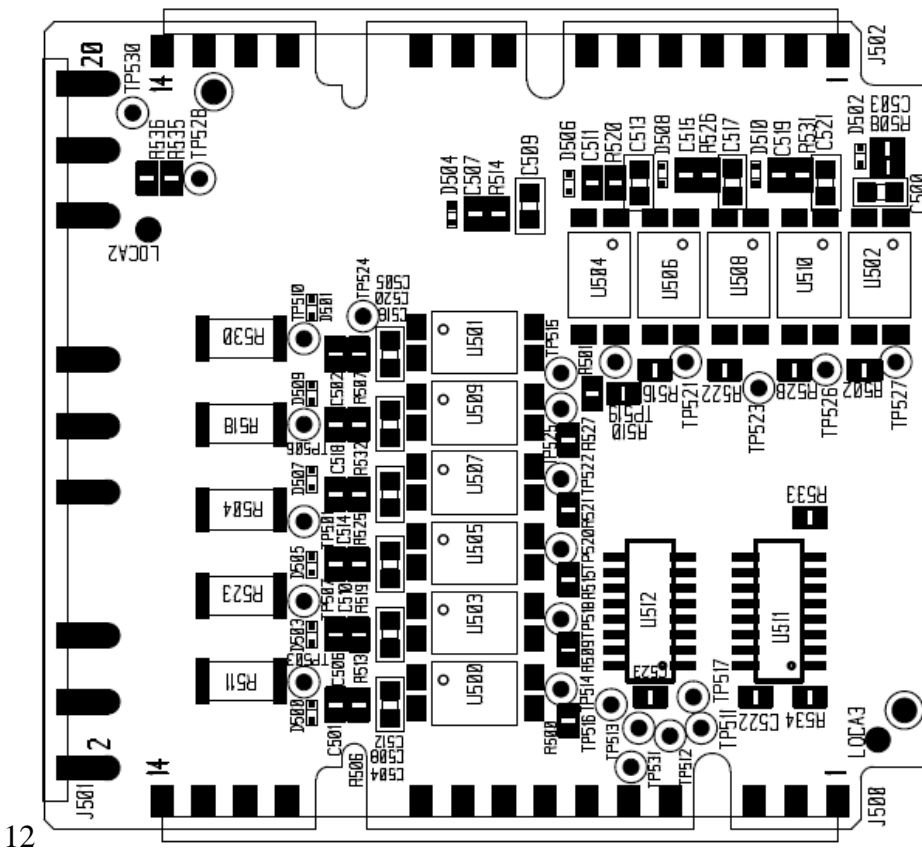
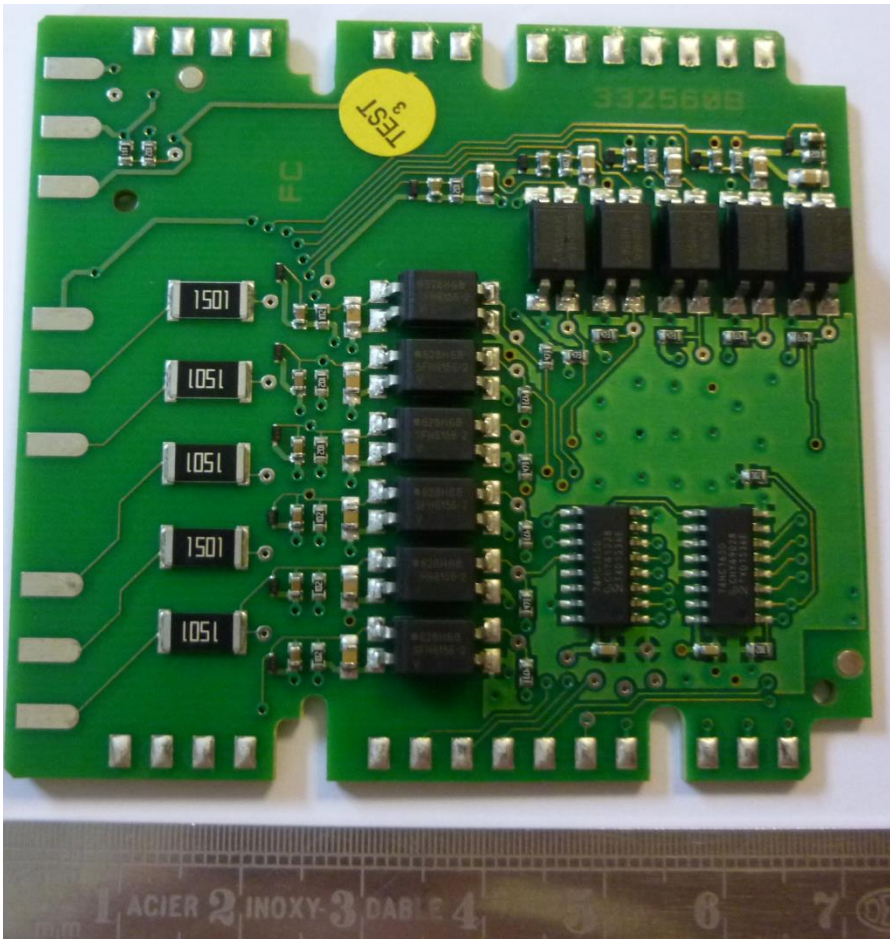


1.4 Emergency Stop board: E25440B-A002

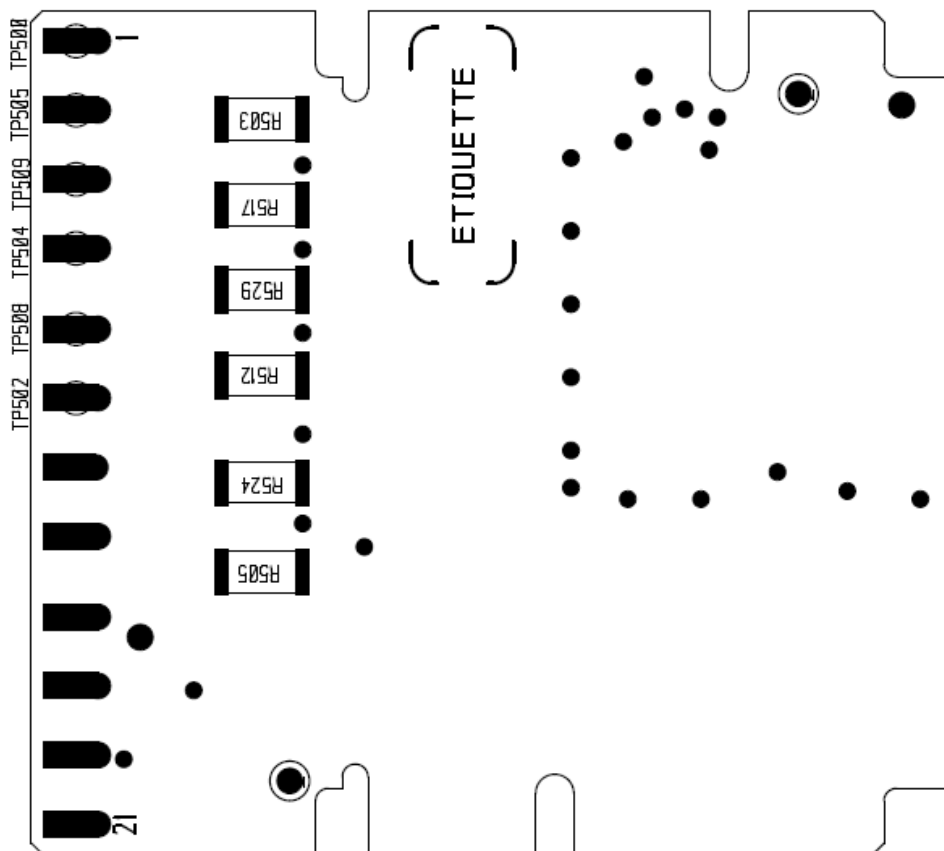
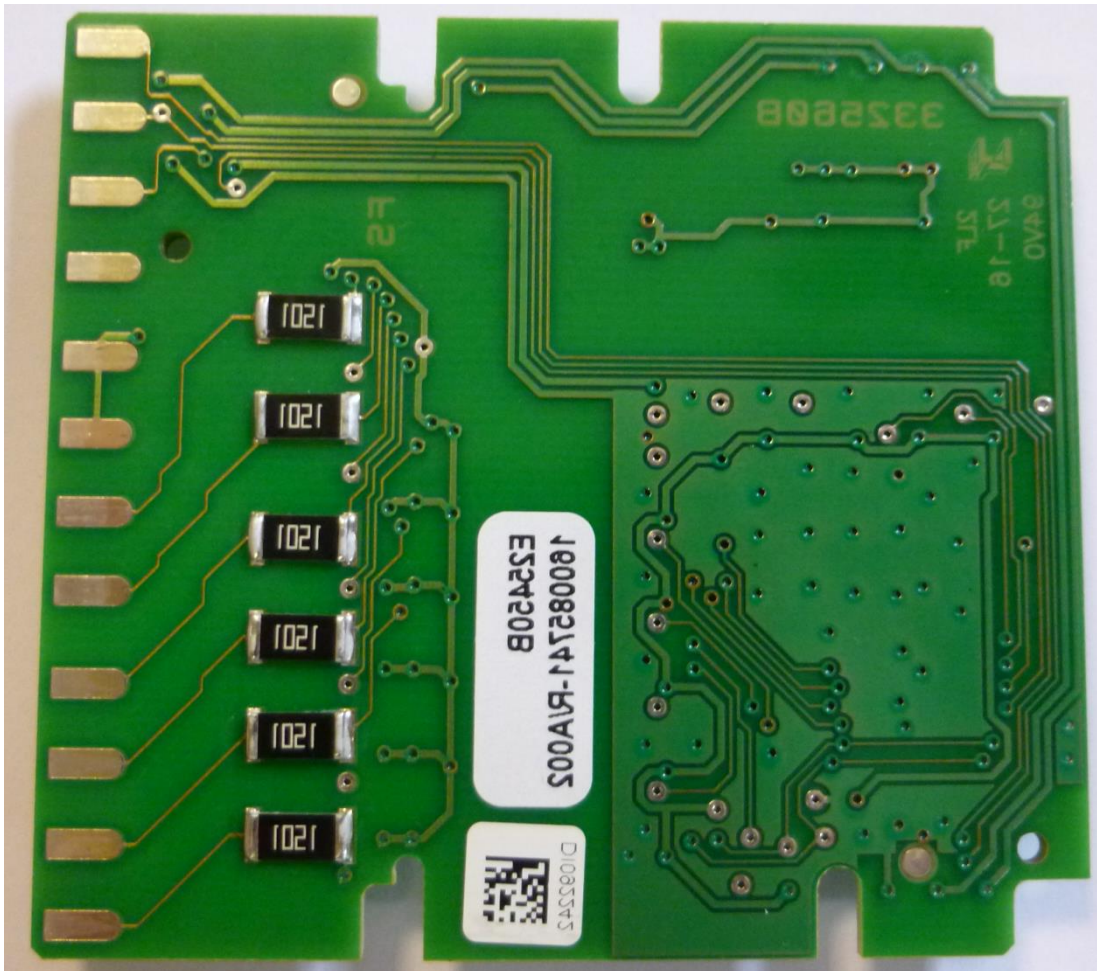




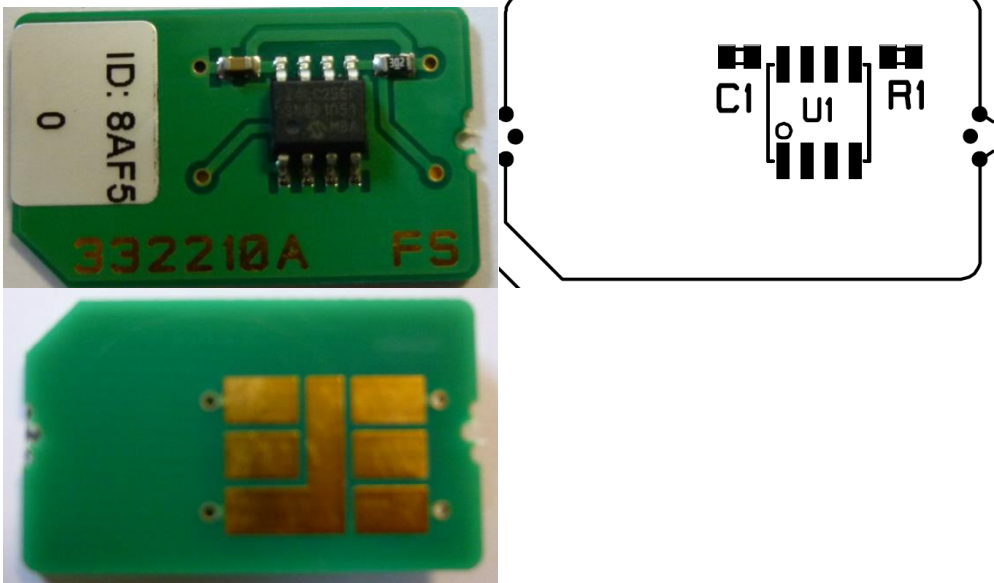
1.5 Input Output board: E25450B-A002



12



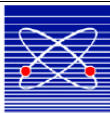
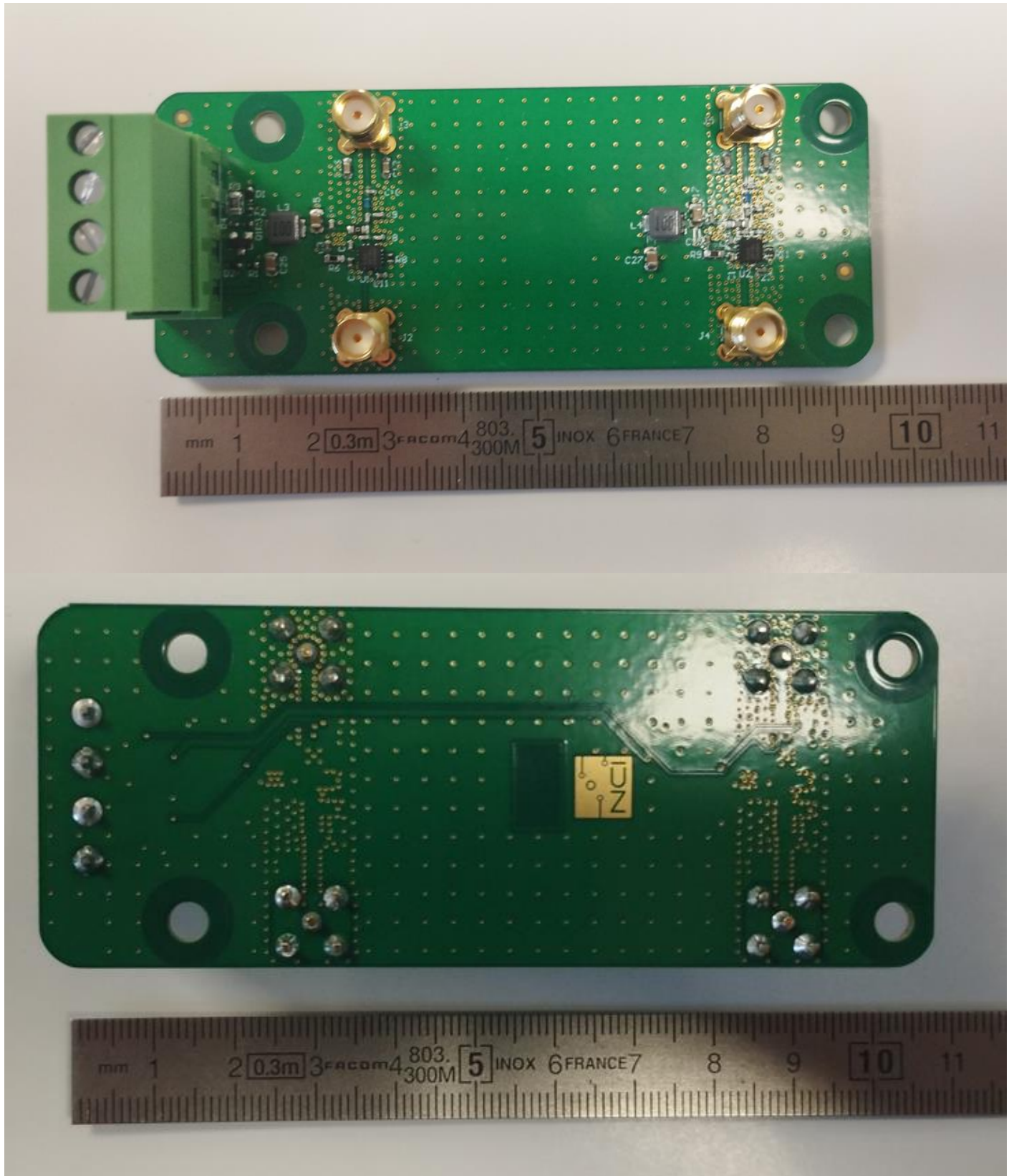
1.6 Sim card: E25370A-A001



1.7 Radio Module E26690



2 E26880A-A002 2.4GHZ RF AMPLIFIER BOARD



3 E26850C-A001 PROTECTION BOARD

