

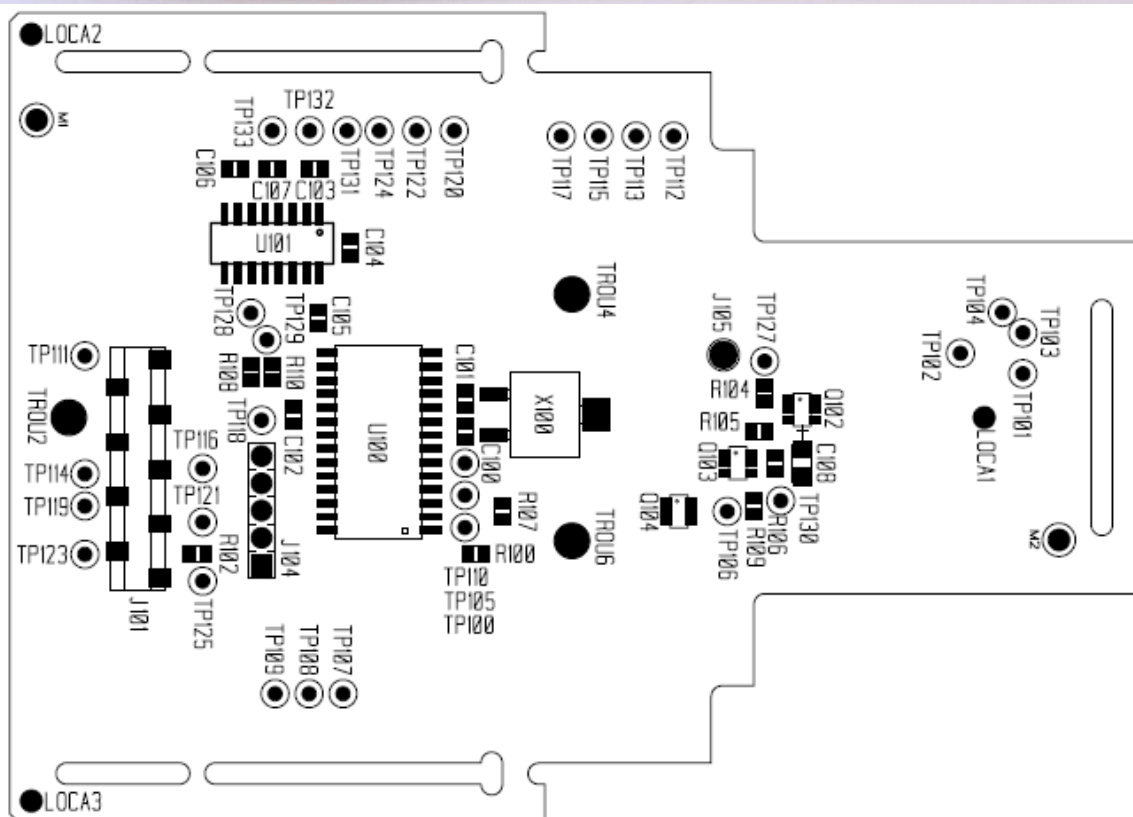
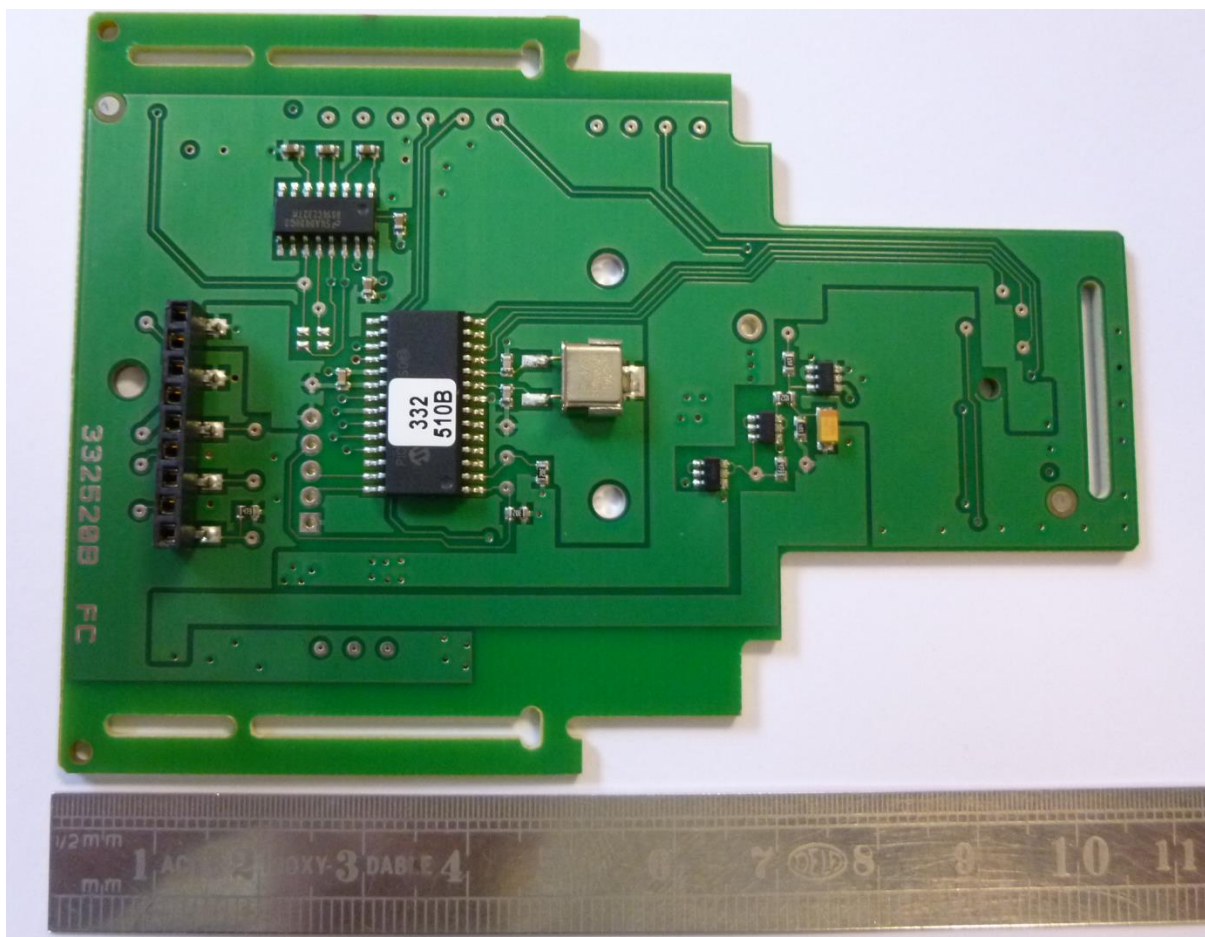
RSEF_IntPho

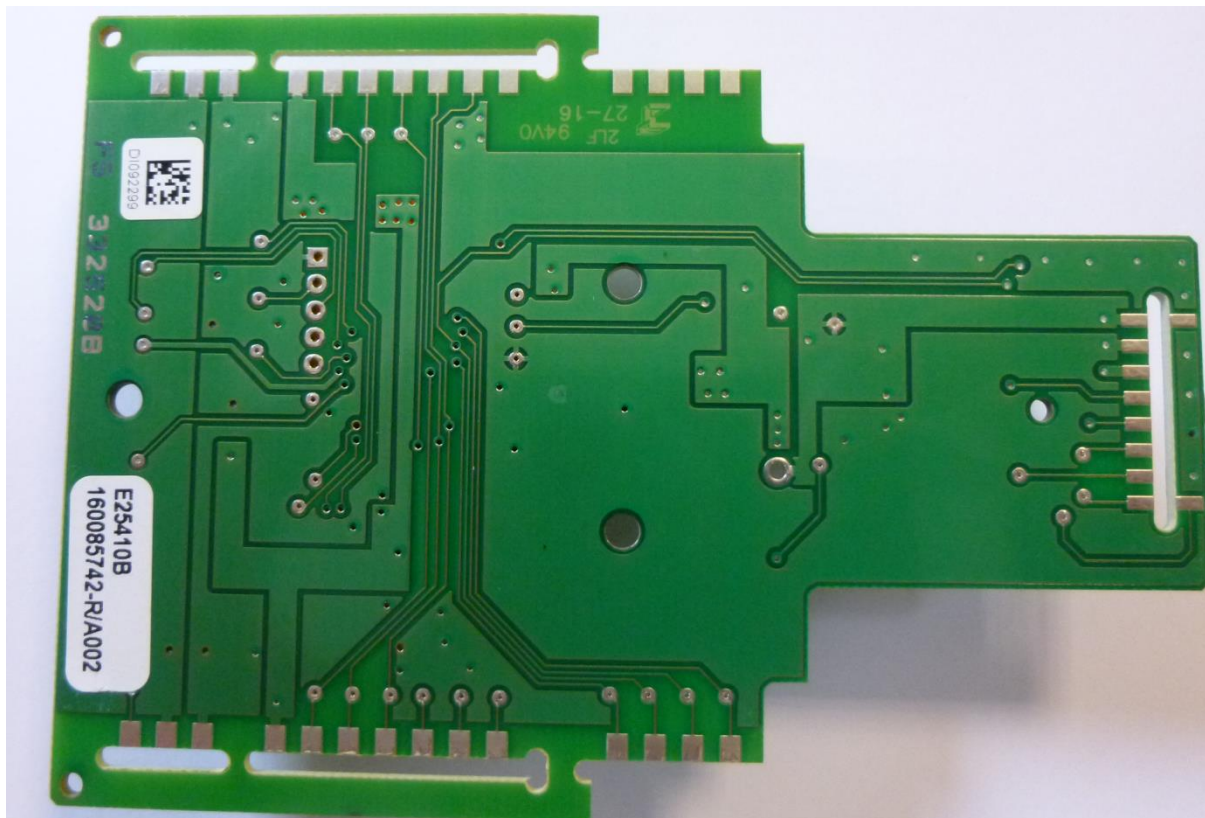
Revision	Modification	Date	Writer	Approved by
A0	Initial document	2017/08/30	S.Vanremoortere	C. Clapier

Table of contents

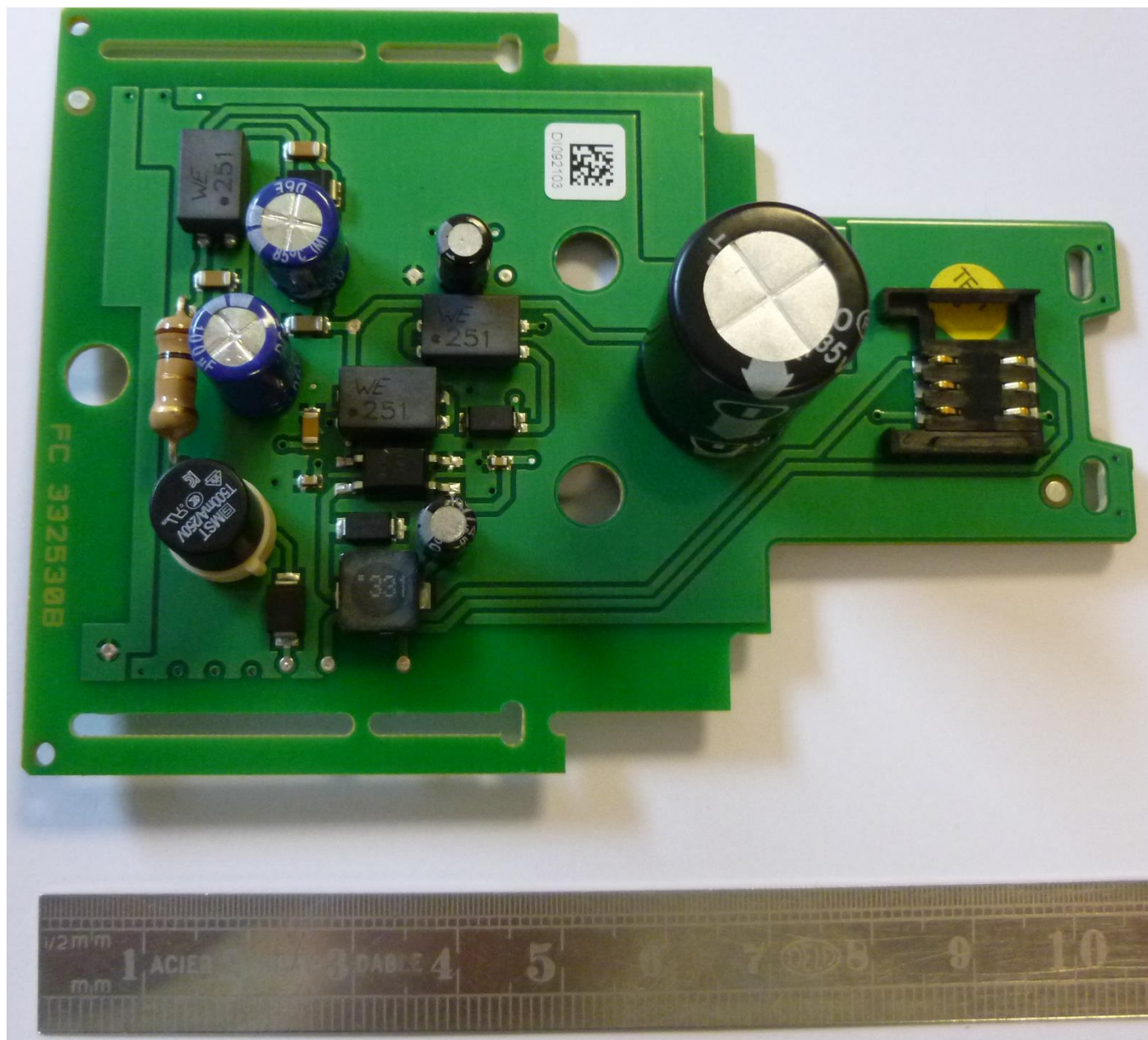
1	MICROCONTROLLER BOARD: E25410B-A002	3
2	POWER AND SIM BOARD: E25420B-A003.....	5
3	TOP FACE BOARD : E25430B-A002	7
4	EMERGENCY STOP BOARD: E25440B-A002	9
5	INPUT OUTPUT BOARD: E25450B-A002.....	11
6	SIM CARD: E25370A-A001.....	13
7	RADIO MODULE 915MHZ BOARD: E25590B-A002.....	14

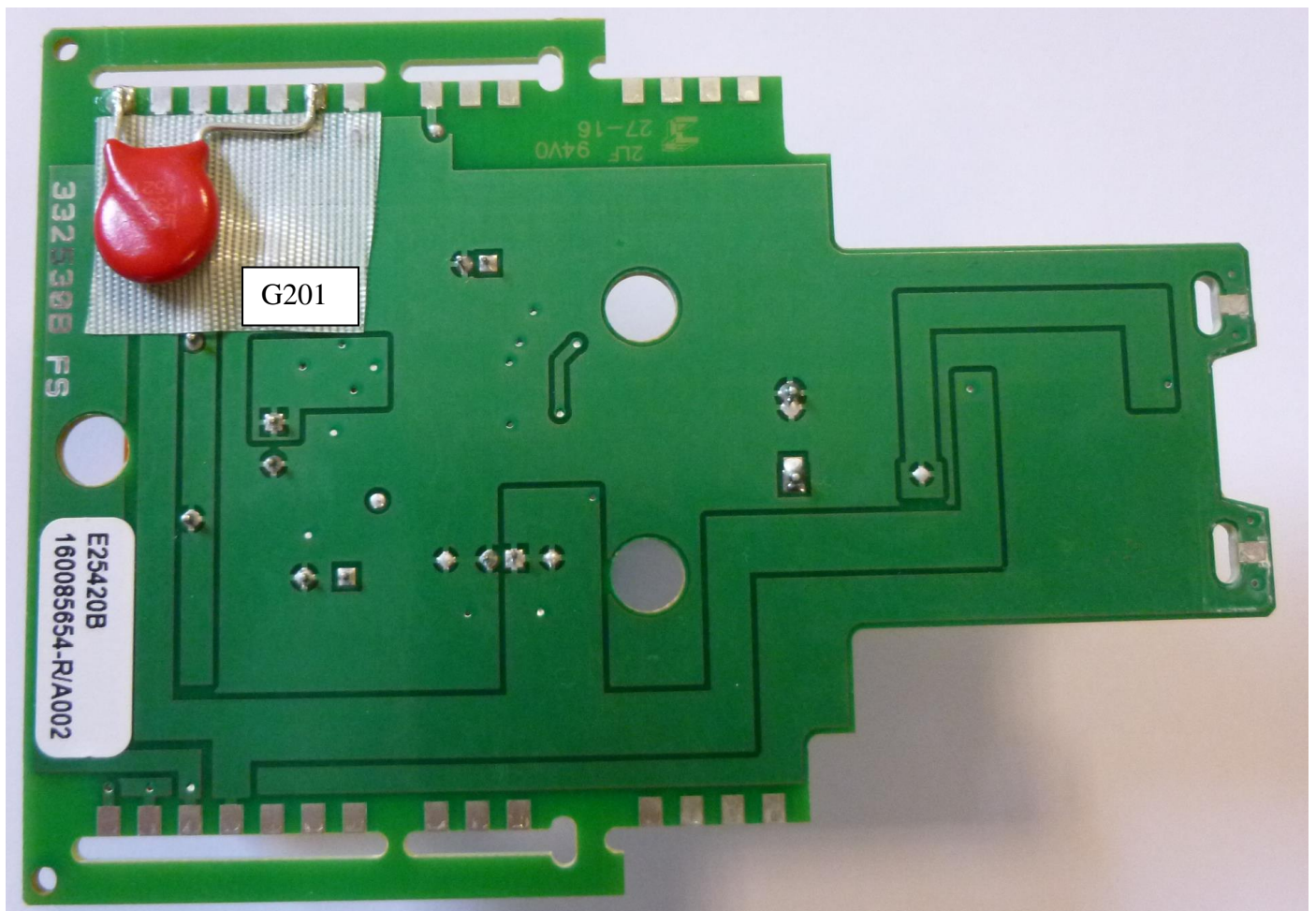
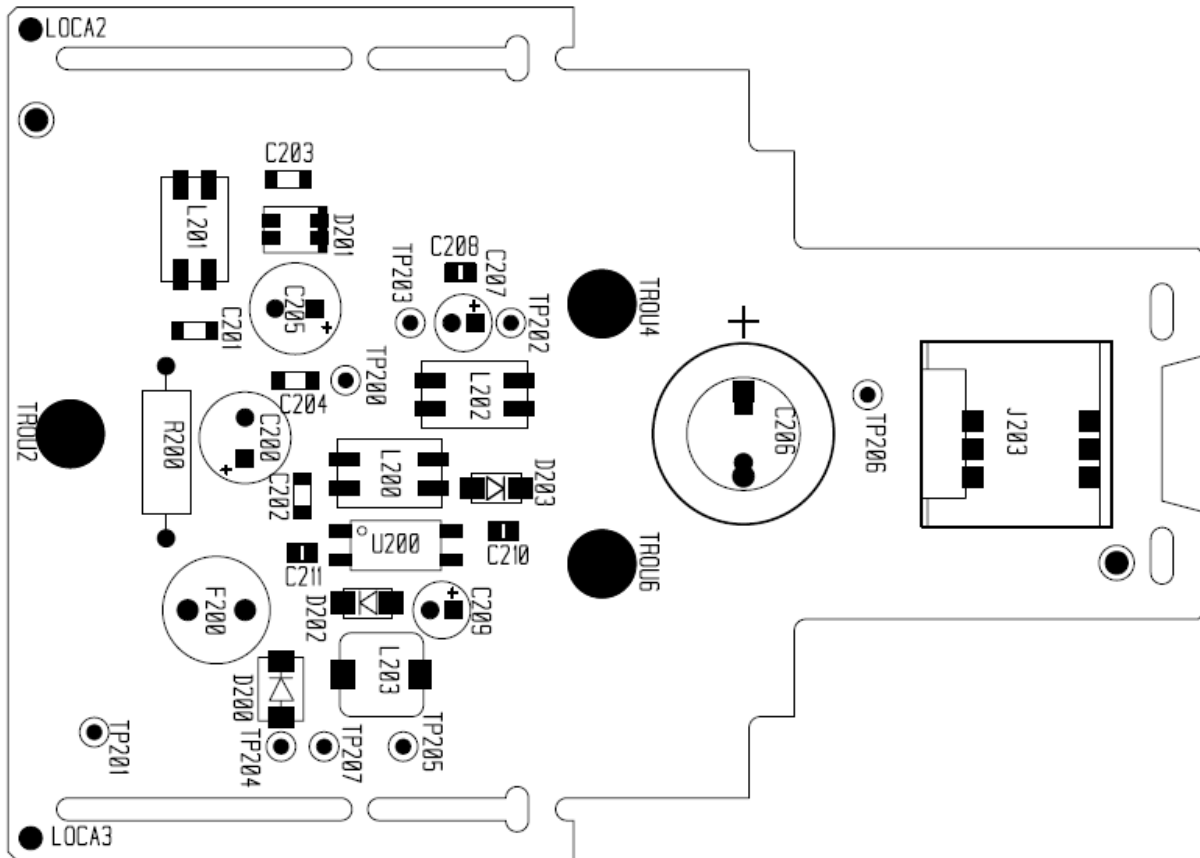
1 MICROCONTROLLER BOARD: E25410B-A002



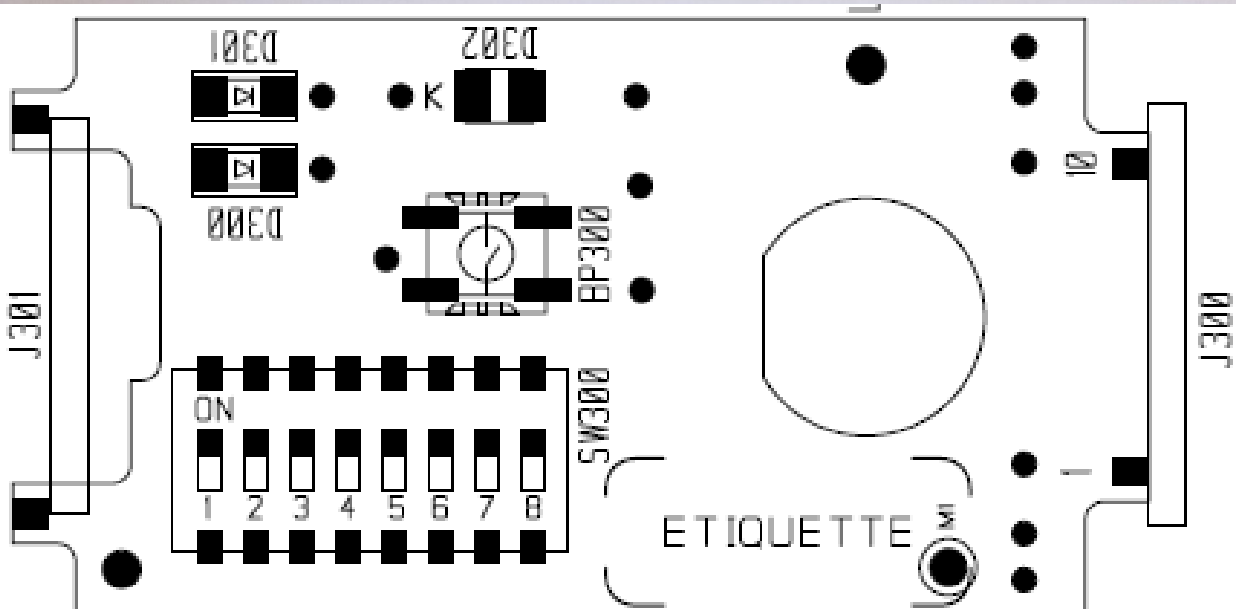


2 POWER AND SIM BOARD: E25420B-A003

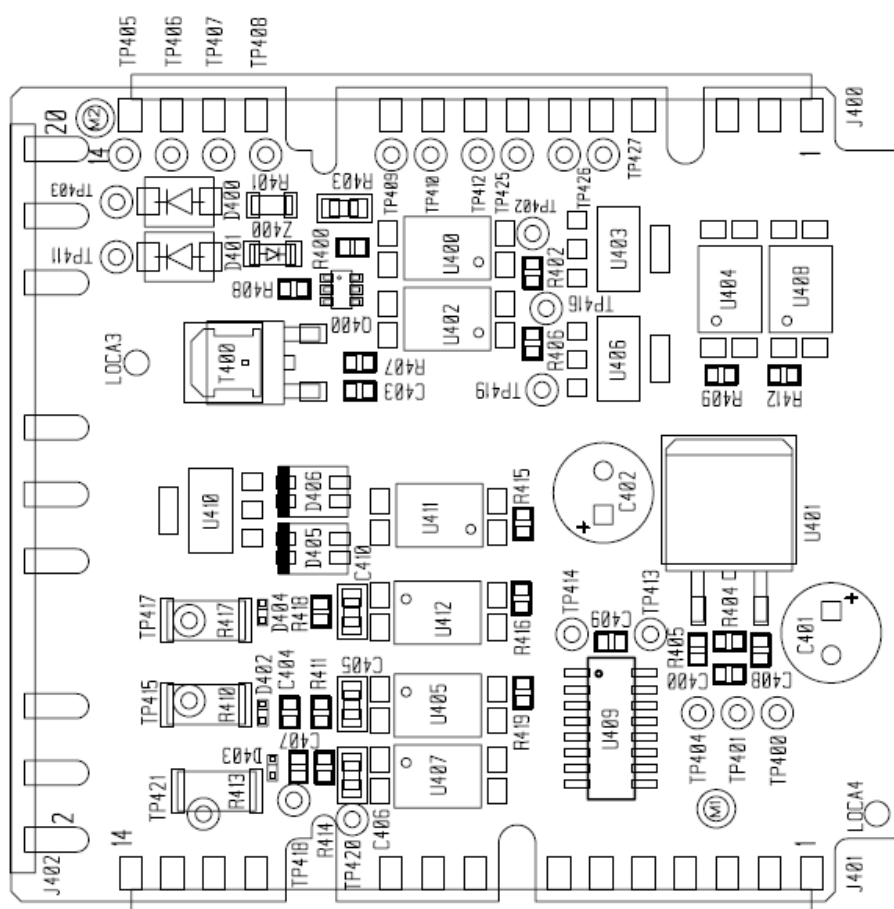
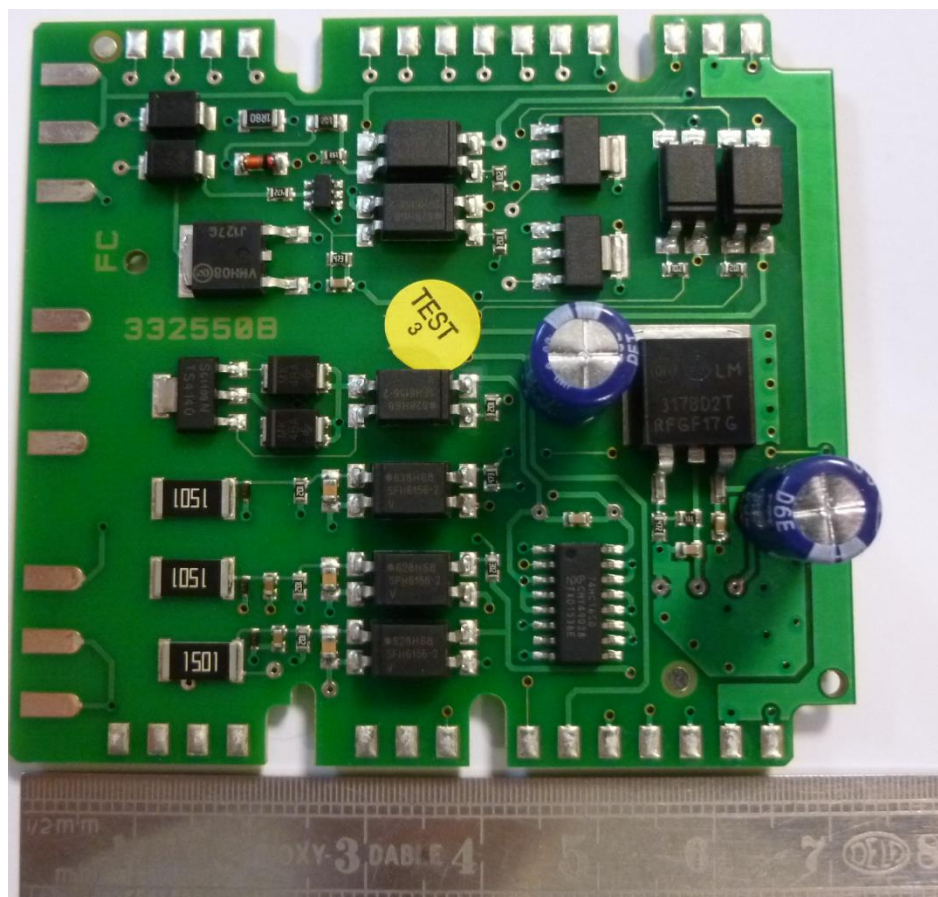


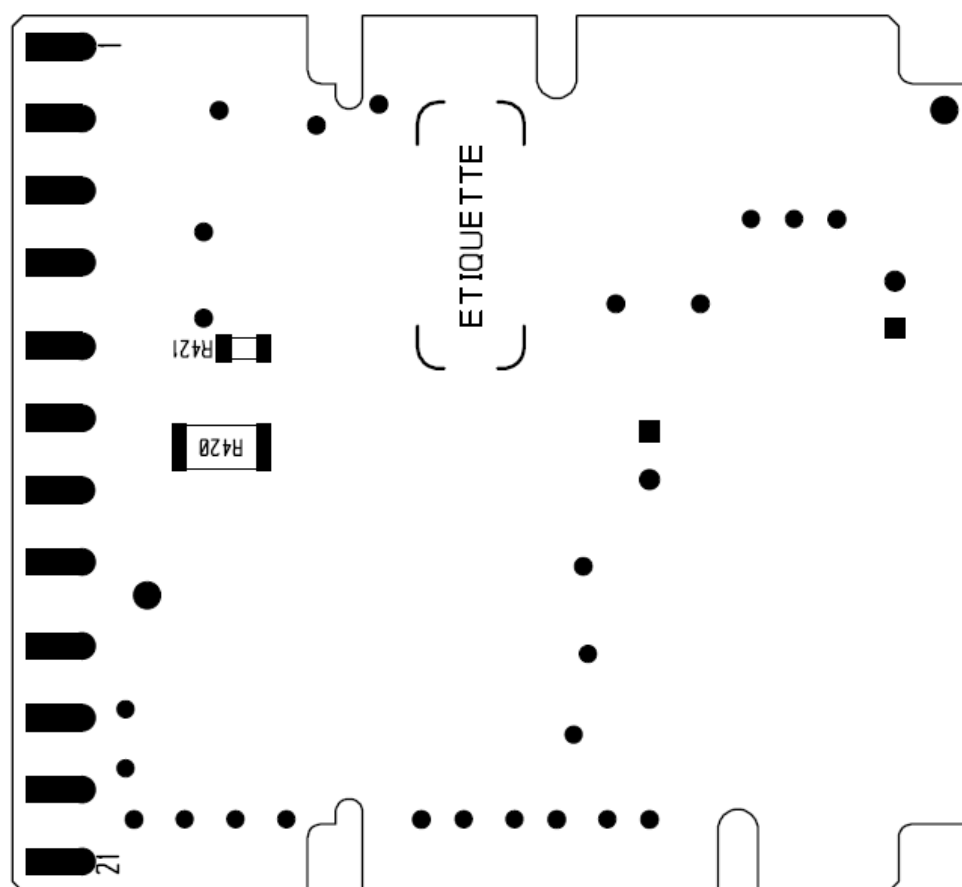
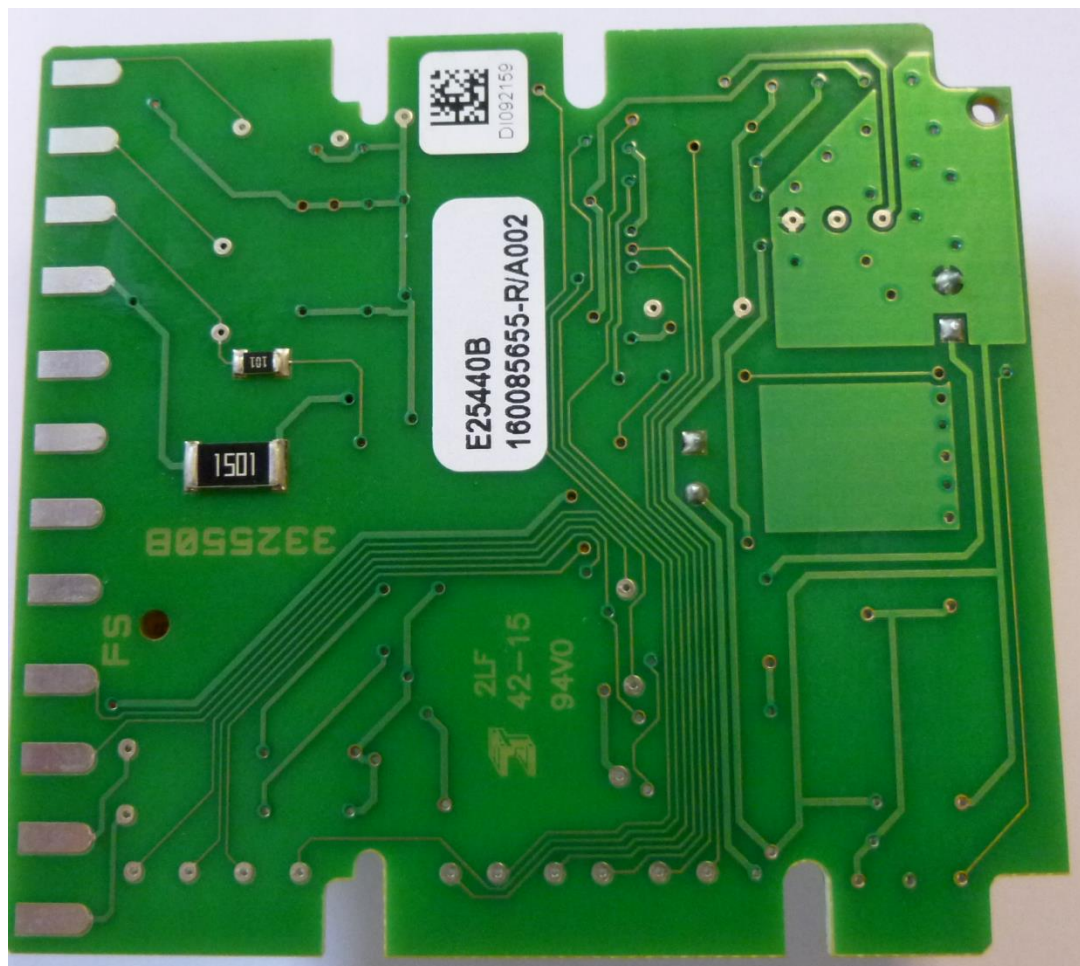


3 TOP FACE BOARD : E25430B-A002

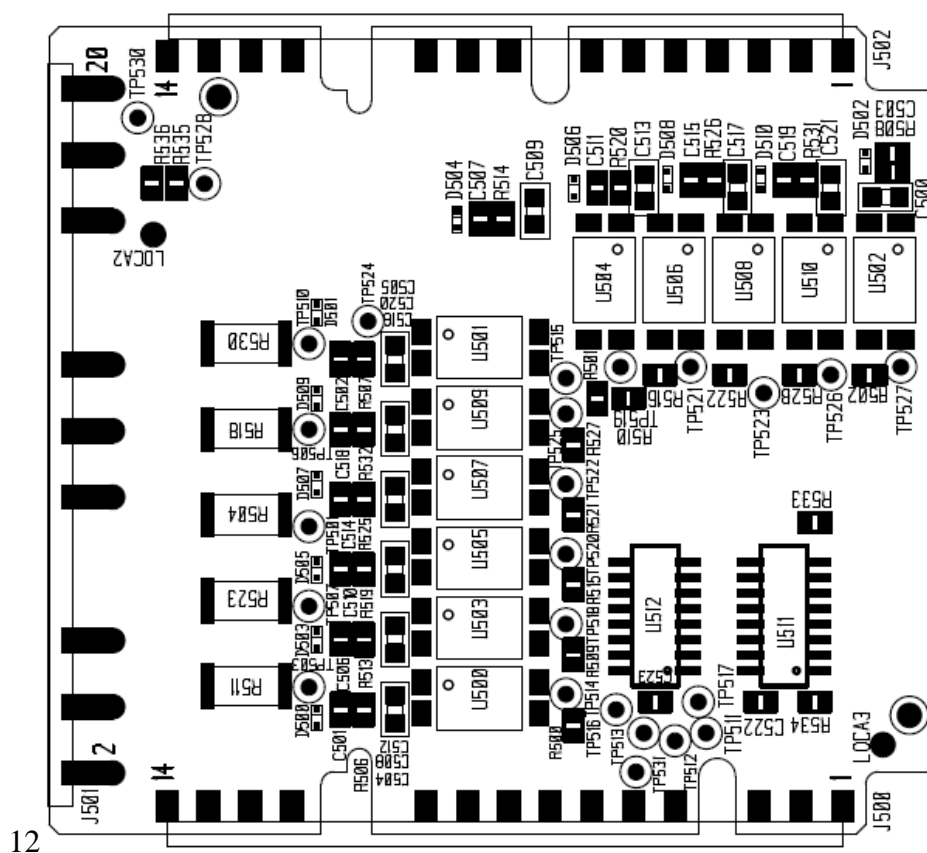
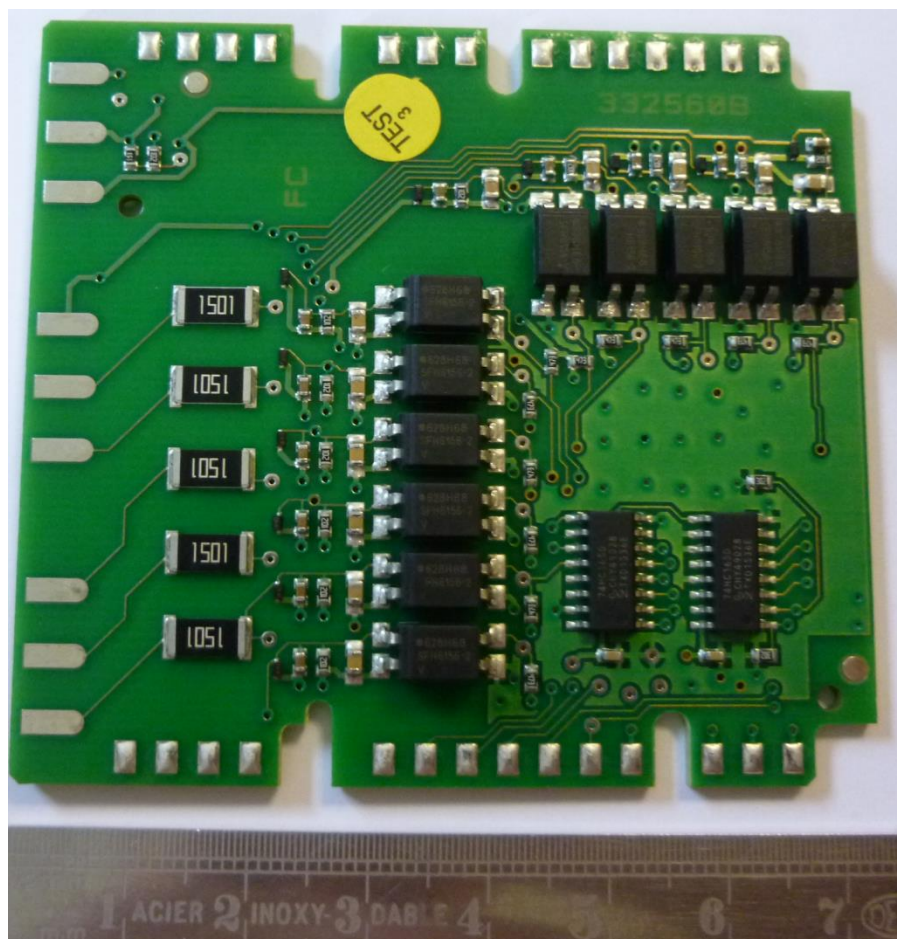


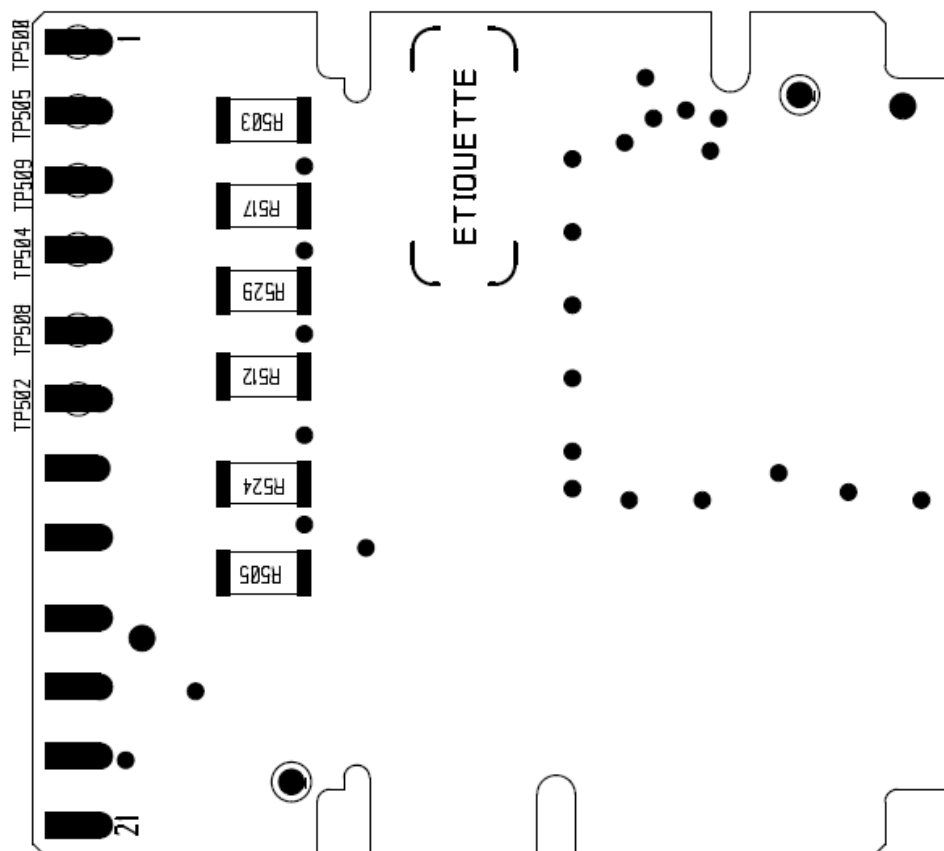
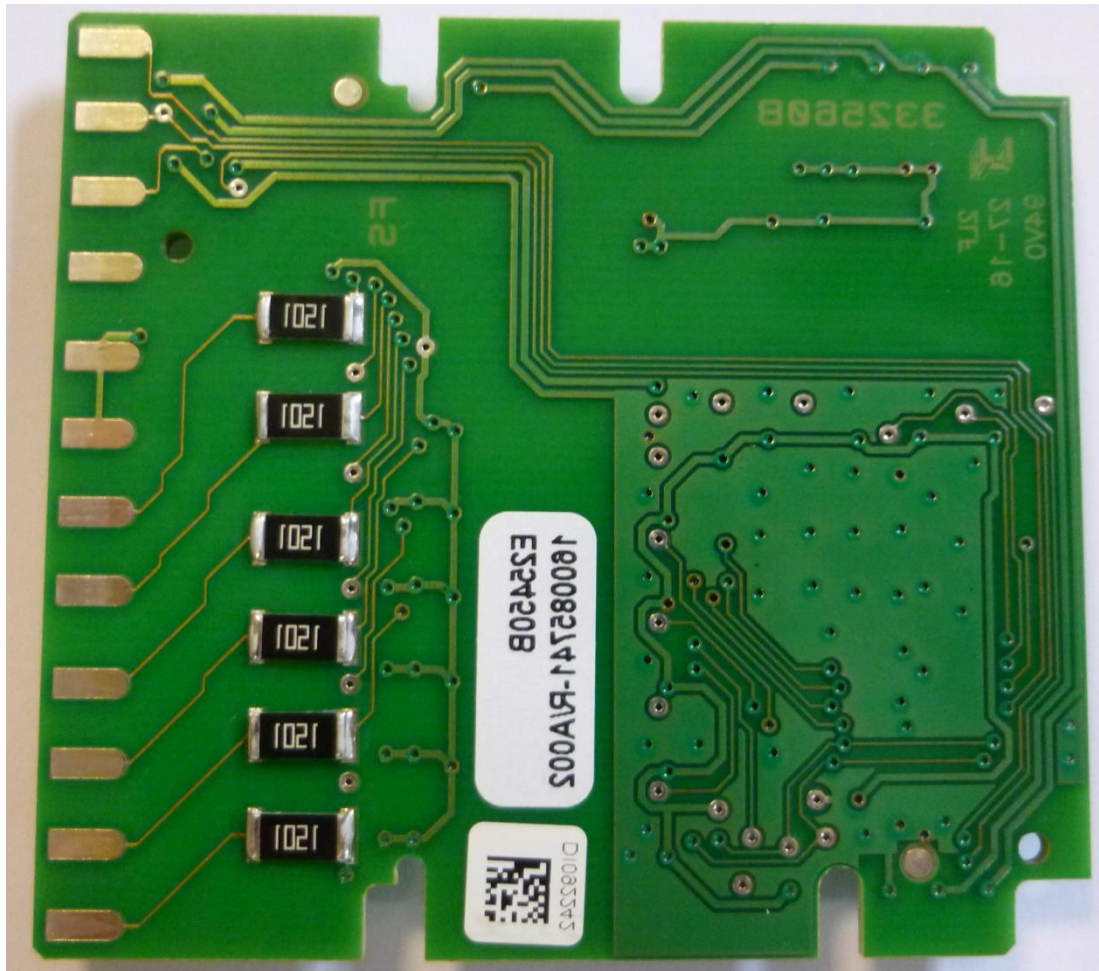
4 EMERGENCY STOP BOARD: E25440B-A002



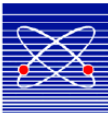
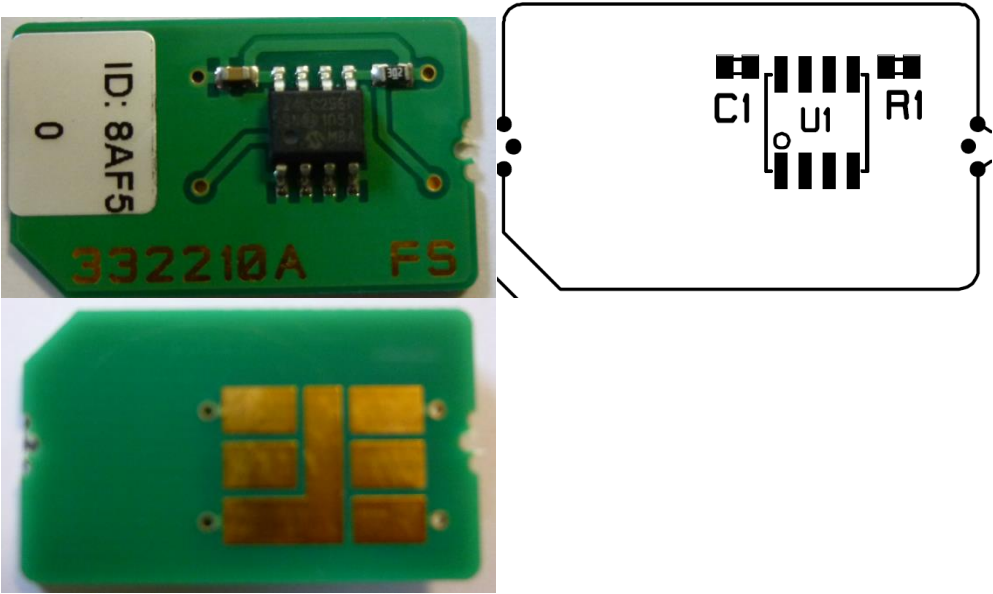


5 INPUT OUTPUT BOARD: E25450B-A002





6 SIM CARD: E25370A-A001



7 RADIO MODULE 915MHZ BOARD: E25590B-A002

