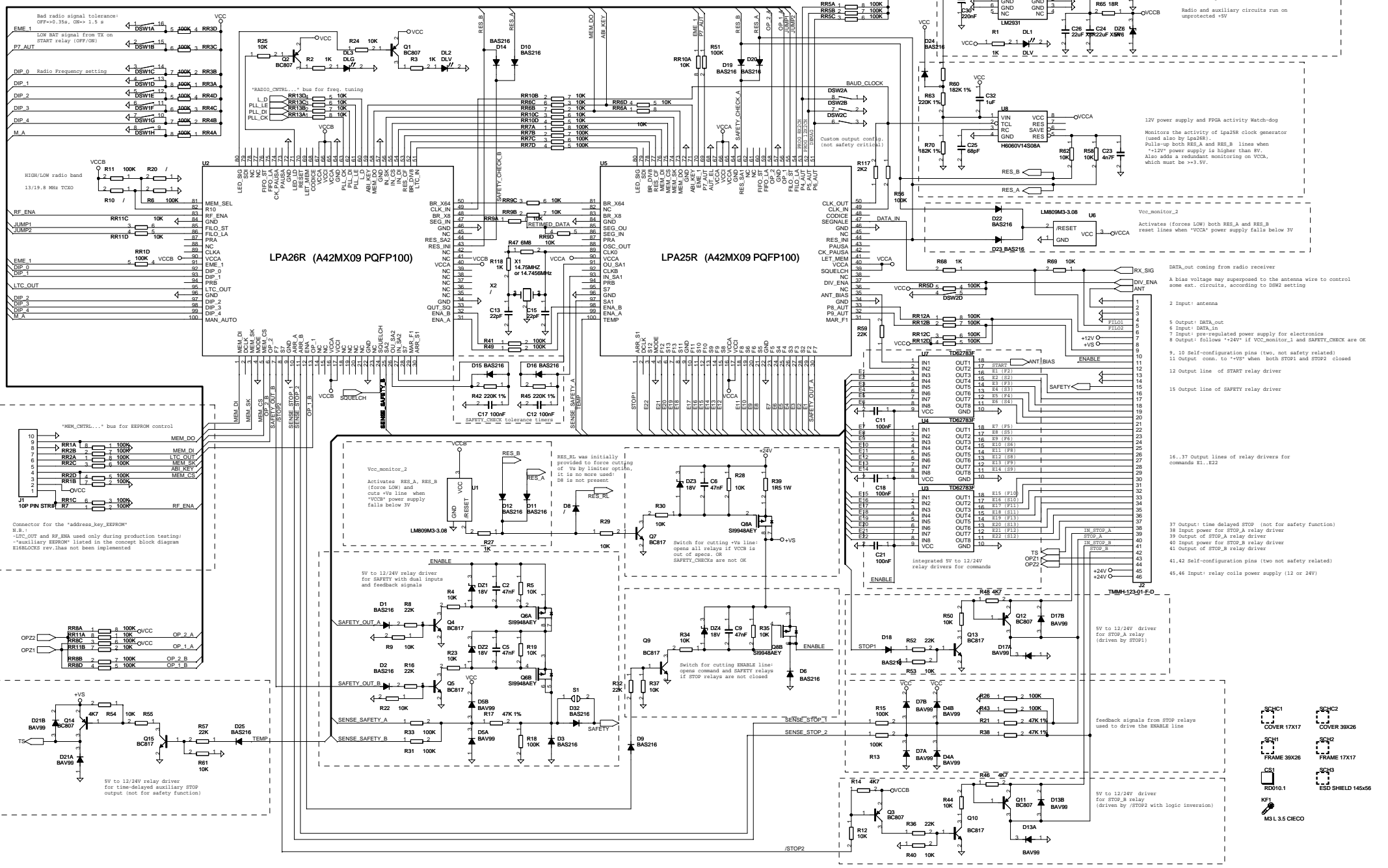


Both PFGAs have resettable lines (RES\_A and RES\_B) driving their reset inputs (RES\_IN1). These lines are weakly pulled-up by the output of the "12V and PFGA activity" Watch dog (U6); they can be forced LOW in the reset state by any of the following watch dogs:  
 -Vcc\_monitor\_1 (U1) by means of D11, D12;  
 -Vcc\_monitor\_2 (U5) by means of D22, D23;  
 -SAFETY\_CHECK\_A, feedback test of SAFETY driver output (SENSE\_SAFETY\_XOR SAFETY\_OUT7) performed by PFGA "A" (Lpa25R), by means of D10, D14;  
 -SAFETY\_CHECK\_B, by means of D19, D20



Rev Data

01	20/05/04	First revision
02	14/09/05	Sheet 2 revised
03	16/06/06	Alternative X2 quartz added; U6, C25 updated; sheet 2 revised; TA1 removed; ESD shield added
04	10/10/06	T108 added; D26 value of components updated; PCB revised

Revision History

01	20/05/04	First revision
02	14/09/05	Sheet 2 revised
03	16/06/06	Alternative X2 quartz added; U6, C25 updated; sheet 2 revised; TA1 removed; ESD shield added
04	10/10/06	T108 added; D26 value of components updated; PCB revised

**autec**  
**RADIO REMOTE CONTROL**

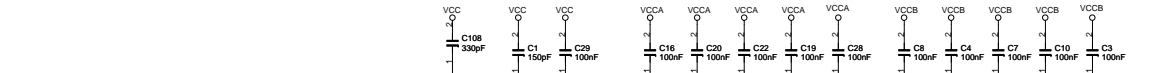
Cod: FORXIDE060AD (E16SRXU1 2.3 915MHz)

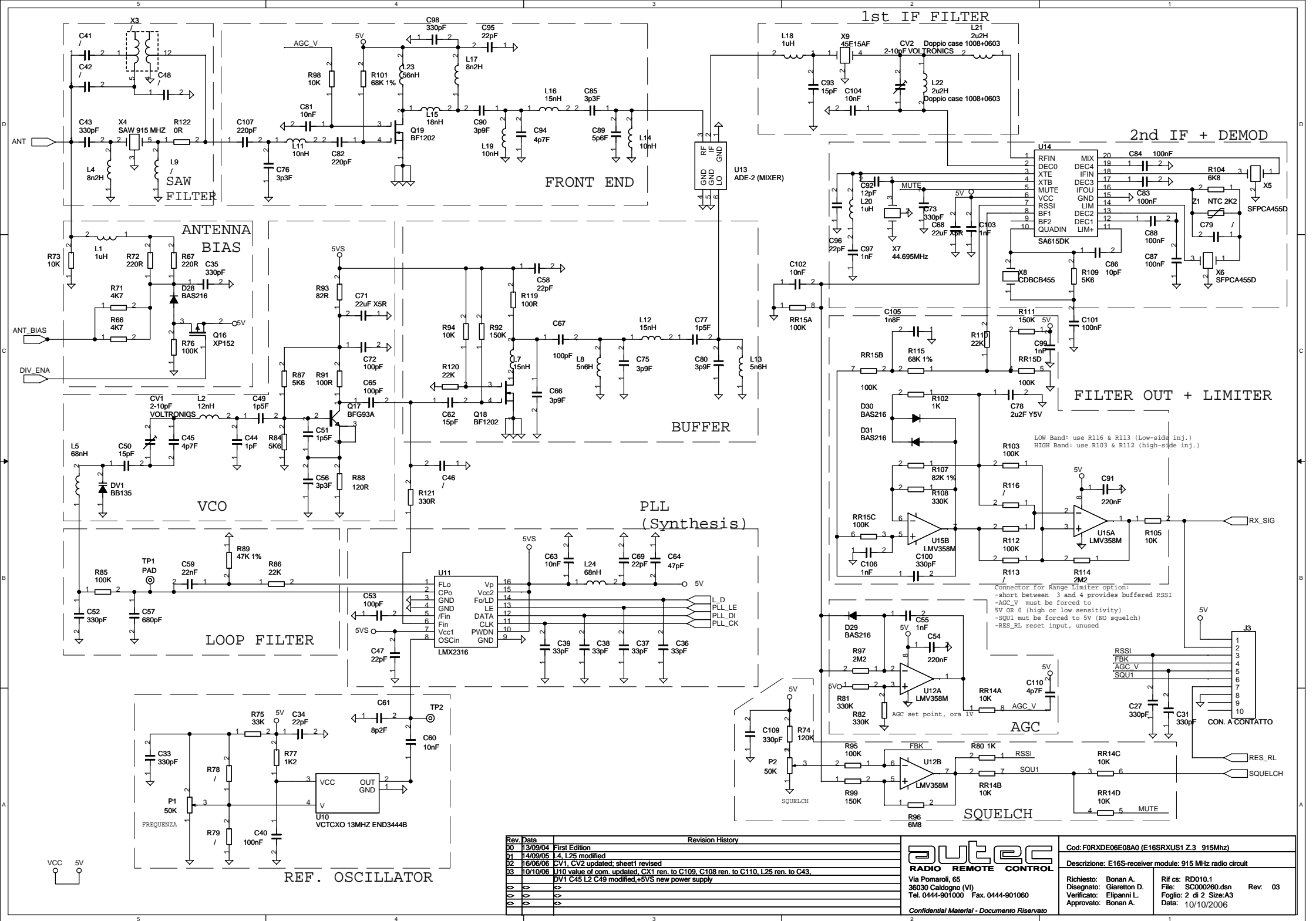
Descrizione: E16S receiver module; logic and power circuits

Via Pomaroli, 65  
 36030 Cadopagno (VI)  
 Tel. 0444-901000 Fax. 0444-901060

Richiedi: Bonan A. File: SC000260.dgn  
 Verificato: Terrena M. Foglio: 1 of 2 Sheet A2  
 Approvato: Bonan A. Data: 10/10/2006

Rev: 03

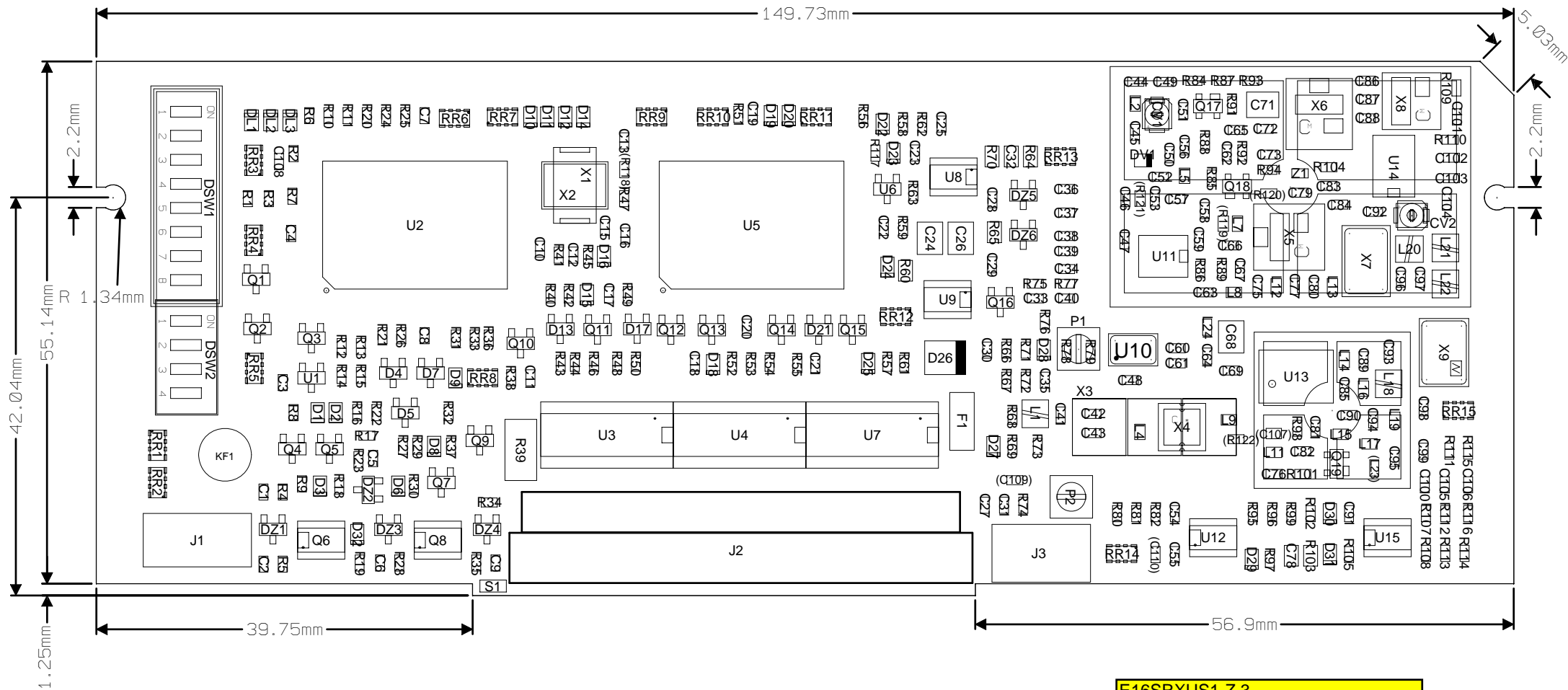




Rev	Date	Revision History
00	13/09/04	First Edition
01	14/09/05	L4, L25 modified
02	16/06/06	CV1, CV2 updated; sheet1 revised
03	10/10/06	U10 value of com. updated, CX1 ren. to C109, C108 ren. to C110, L25 ren. to C43, DV1 C45 L2 C49 modified, +5VS new power supply

**autec**  
**RADIO REMOTE CONTROL**  
 Via Pomaroli, 65  
 36030 Caldogno (VI)  
 Tel. 0444-901000 Fax. 0444-901060  
 Confidential Material - Documento Riservato

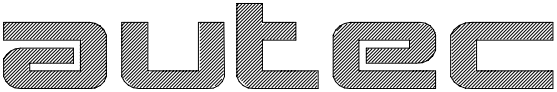
Cod: FORXDE06E08A0 (E16SRXUS1 2.3 915MHz)  
 Descrizione: E16S-receiver module: 915 MHz radio circuit  
 Richiesto: Bonan A. Rif cs: RD010.1  
 Disegnato: Giaretton D. File: SC000260.dsn Rev: 03  
 Verificato: Elipanni L. Foglio: 2 di 2 Size: A3  
 Approvato: Bonan A. Data: 10/10/2006



E16SRXUS1-Z.3

Rev.	Data	Revision History
1	22/11/06	C108 added, D26 footprint modified, U10 footprint modified, PCB revised (inner layers, powers and ground planes)
0	29/07/03	First release
◇	◇	◇
◇	◇	◇

 <p><b>Autec</b> RADIO REMOTE CONTROL</p> <p>Via Pomaroli, 65 36030 CALDOGNO (VI) Tel. 0444/901000 r.a. Fax. 0444/901011</p> <p>Confidential Material - Documento Riservato</p>	<b>TITOLO:</b> Receiver E16SRXEU1 as from rev. Y.2, E16SRXEU2 as from as rev. Z.3, E16SRXUS1 as from as rev. Z.3		
	<b>SPESS. VETRONITE:</b> 1.6MM	<b>SPESS. RAME:</b> 35uM	<b>FILE:</b> RD010.1
	<b>N.LAYER:</b> 4		<b>DATA:</b> 22/11/2006
	<b>RICHIESTO:</b> BONAN A.		<b>DISEGNATO:</b> CECCONI C.
<b>VERIFICATO:</b> TERRERAN M.		<b>APPROVATO:</b> BONAN A.	