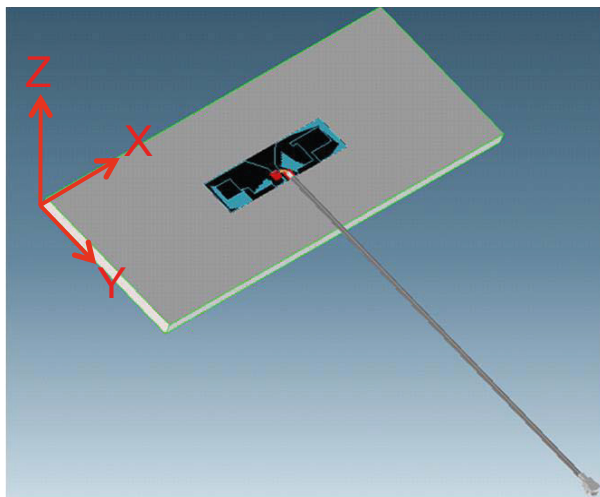
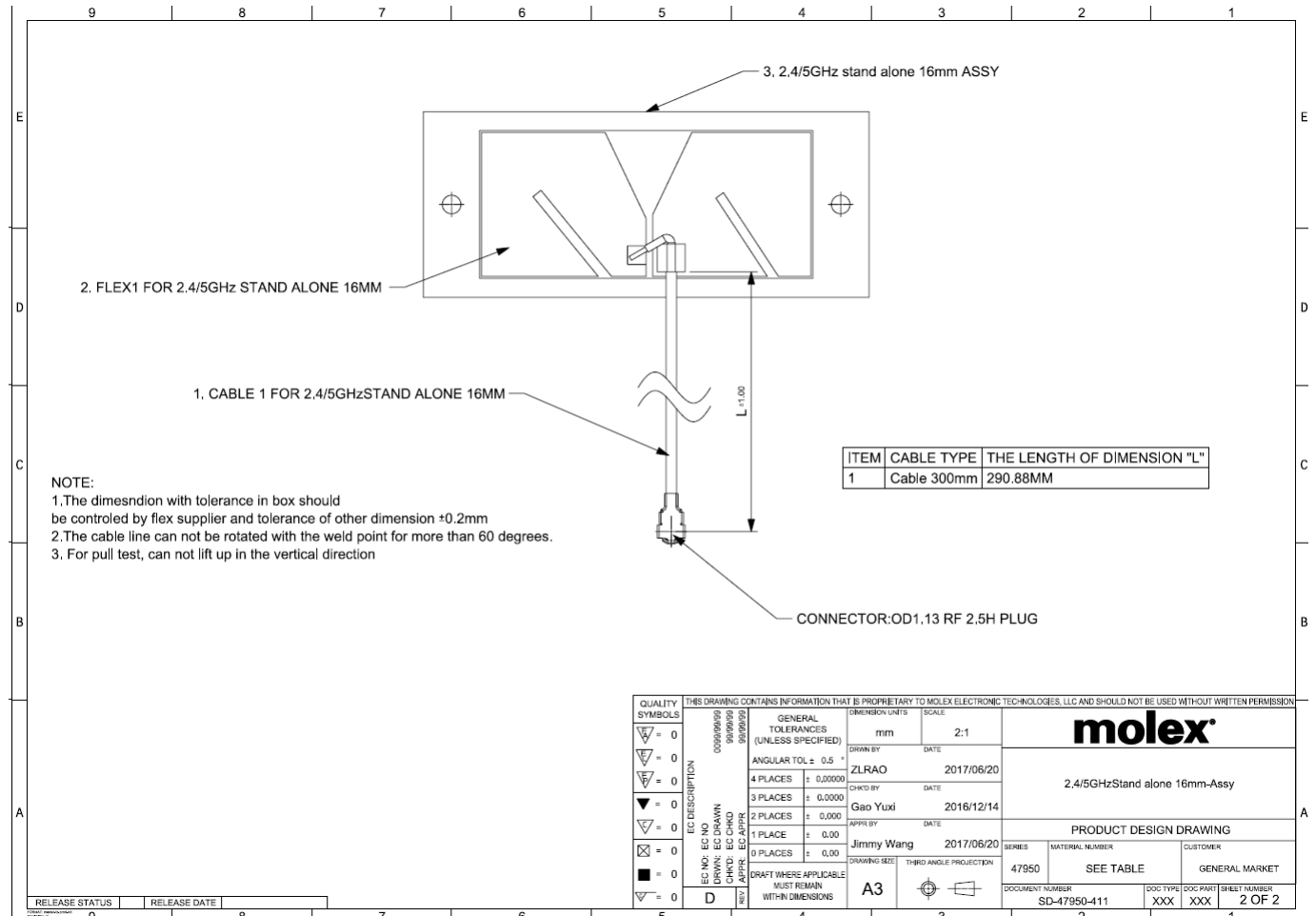


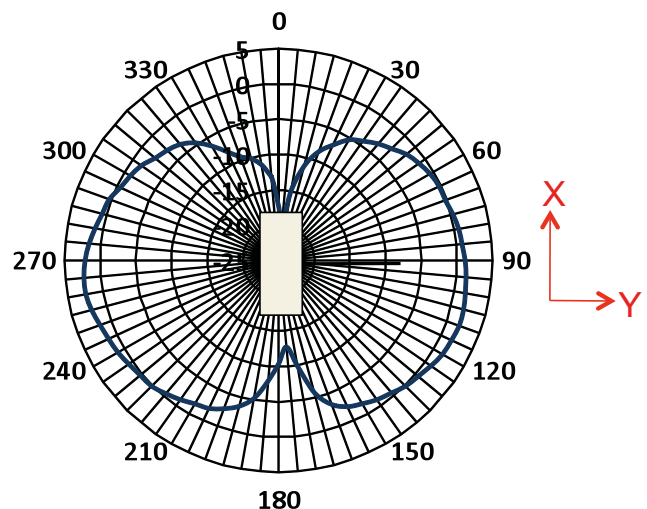
A0ANTE00E0044-00

The 2.4/5GHz antenna is a transducer designed to transmit and receive electromagnetic waves. It can be used in Autec stations and it operates in 2.4/5GHz frequency band.

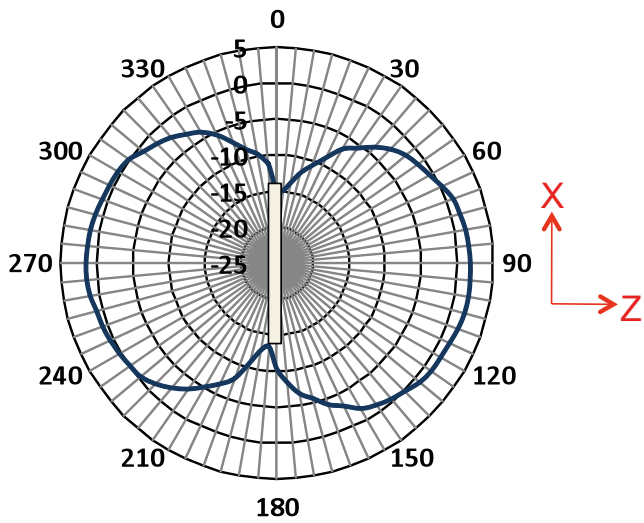
It is a standard dipole realized on a flexible PCB (printed circuit board) directly connected to the RF output of a radio module through a 300mm coaxial cable with a IPEX MHF connector.



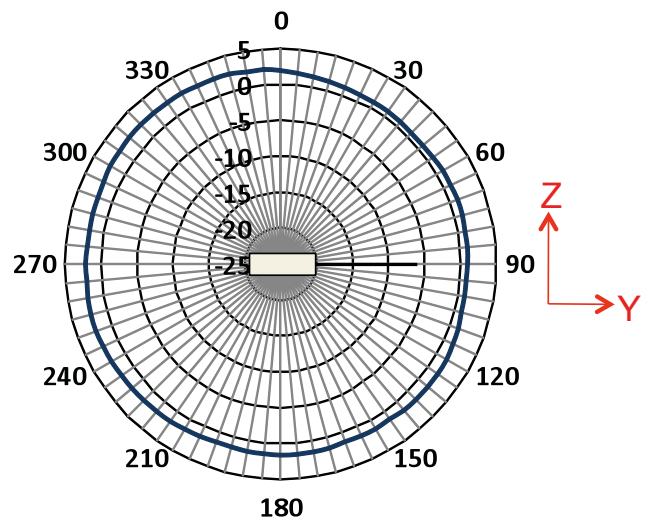
Antenna



Radiation diagram of X-Y plane showing combined polarizations at 2.45 GHz



Radiation diagram of X-Z plane showing combined polarizations at 2.45 GHz



Radiation diagram of Z-Y plane showing combined polarizations at 2.45 GHz