
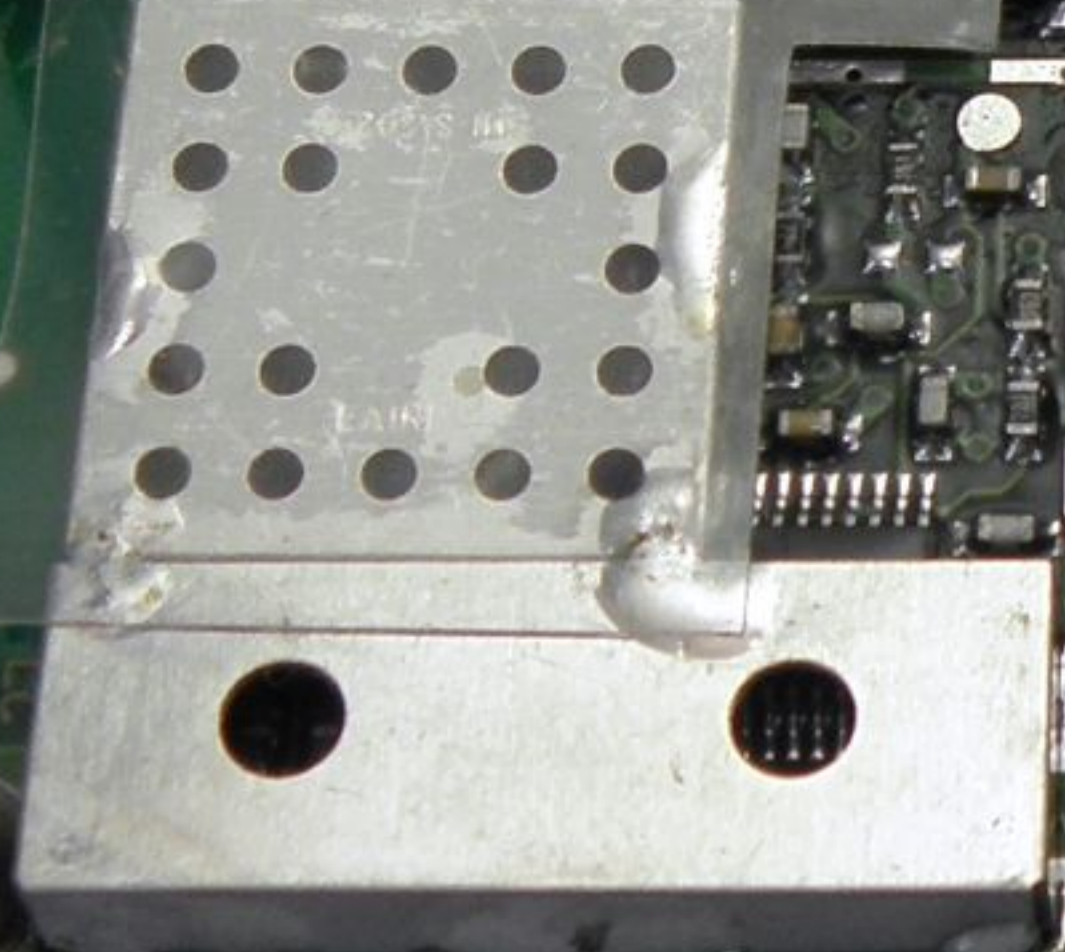
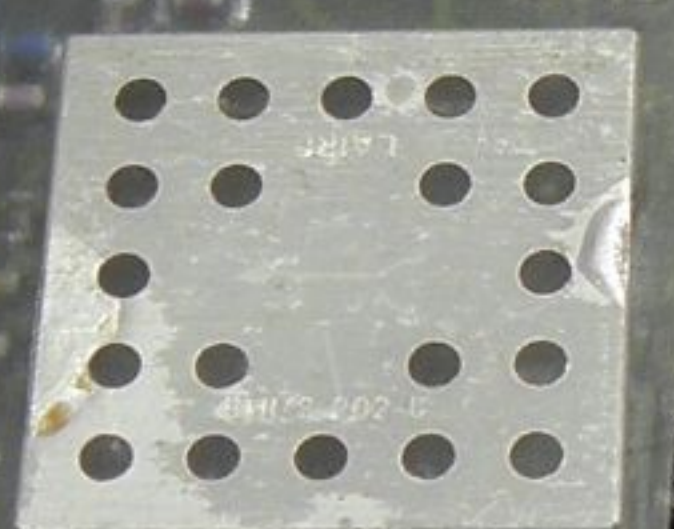
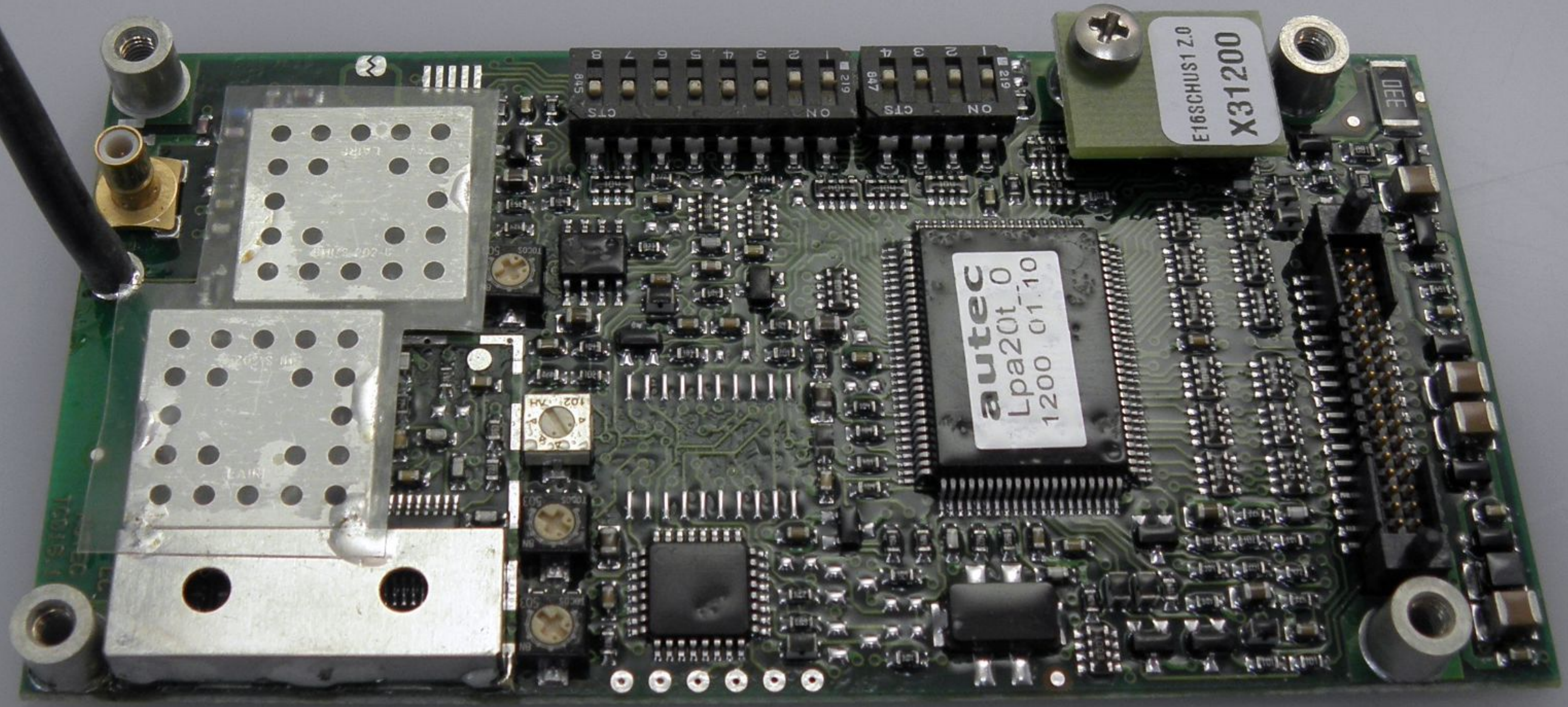
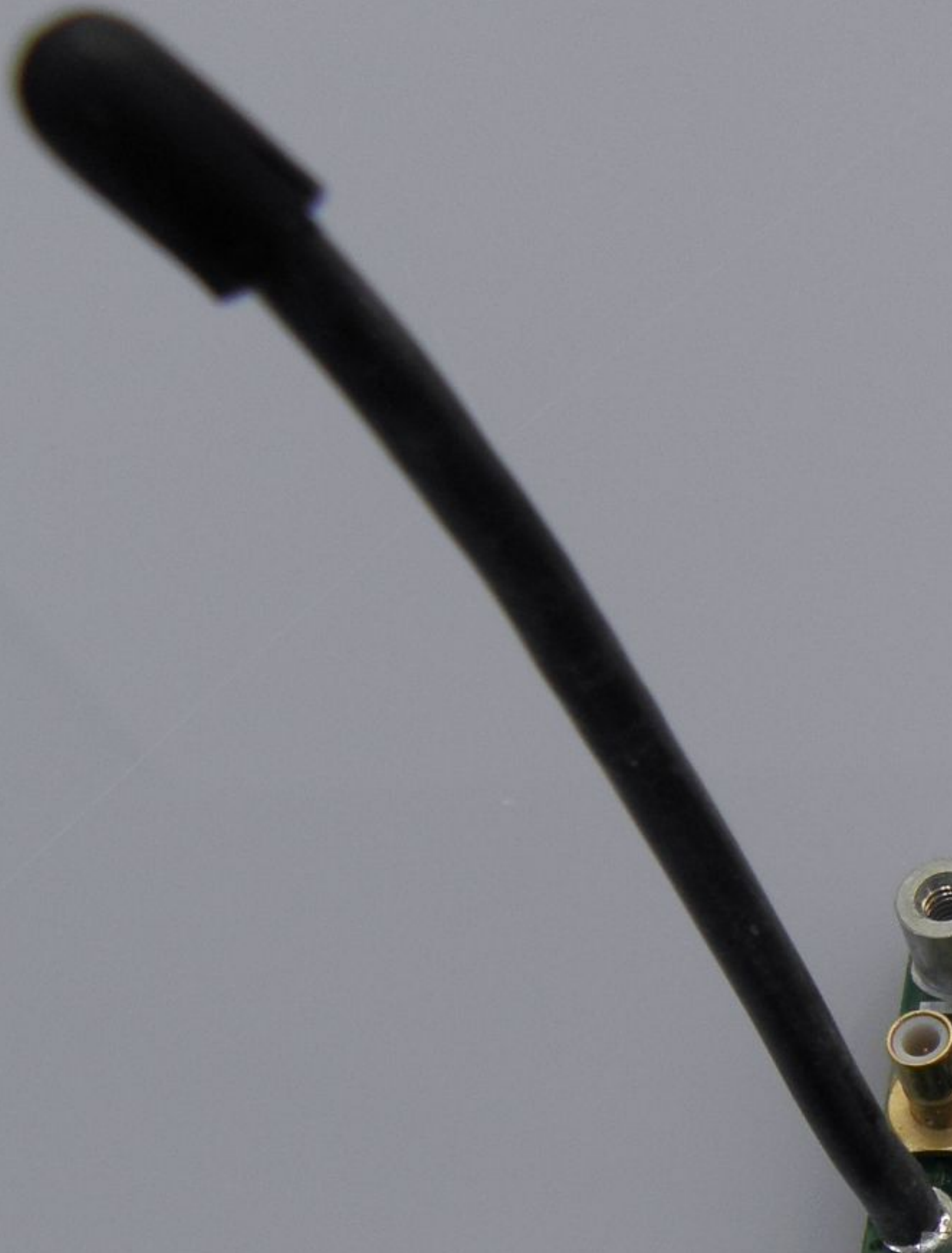


R258406



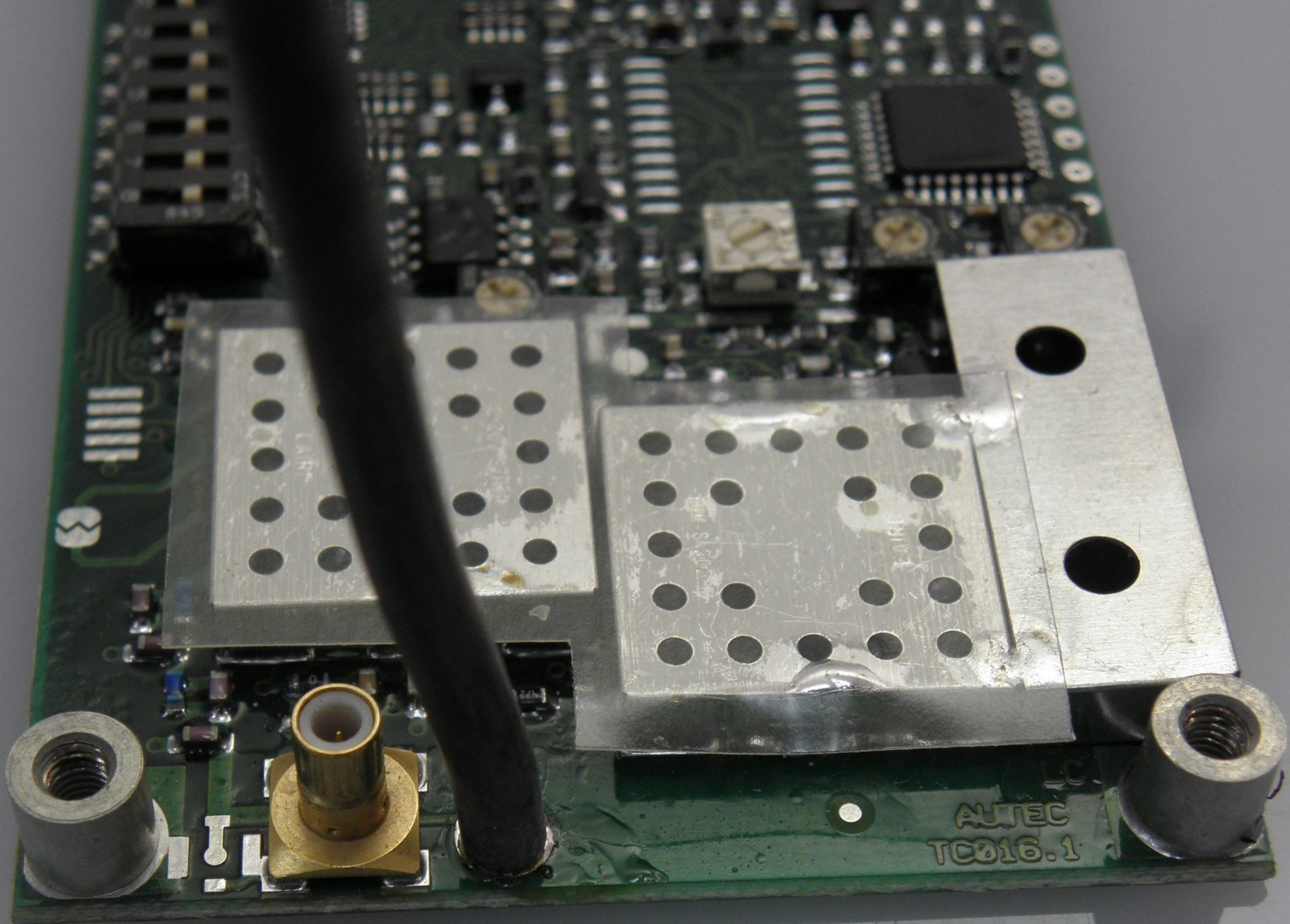
E16STXUS1 Z.1.A.2  
MANUFACTURER AUTEC SRL

LS  
AUTEC  
TC016.1  
46-09 T E

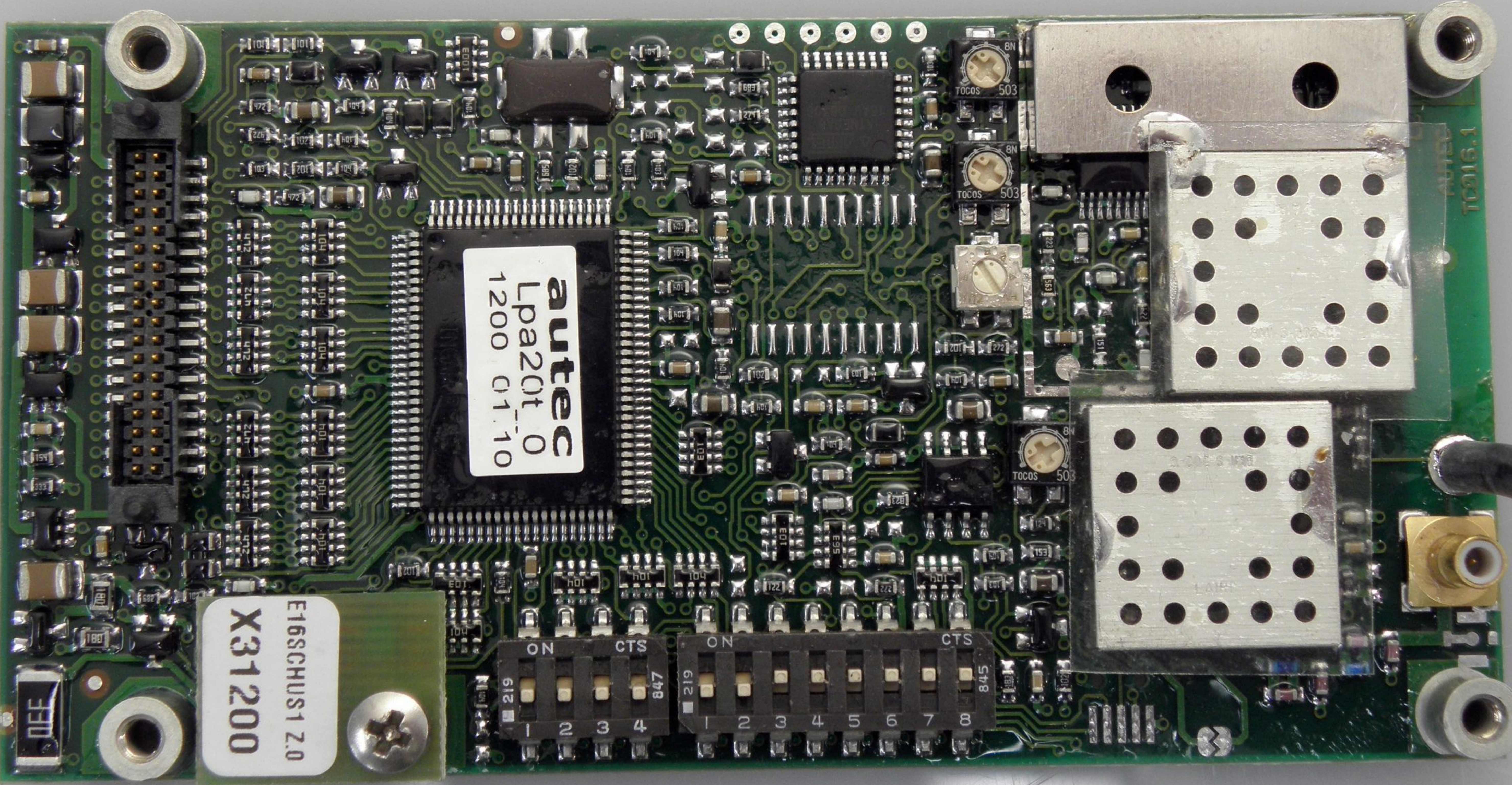


autec  
Lpa20t\_0  
1200 01.10

E16SCHUS1 Z.0  
X31200



ALTEC  
TC016.1



autec  
Lpa20t\_0  
1200 01\_10

E16SCHUS1 Z.0  
X31200

ON CTS  
1 2 3 4  
219 848

ON CTS  
1 2 3 4 5 6 7 8  
219 848

T0916.1

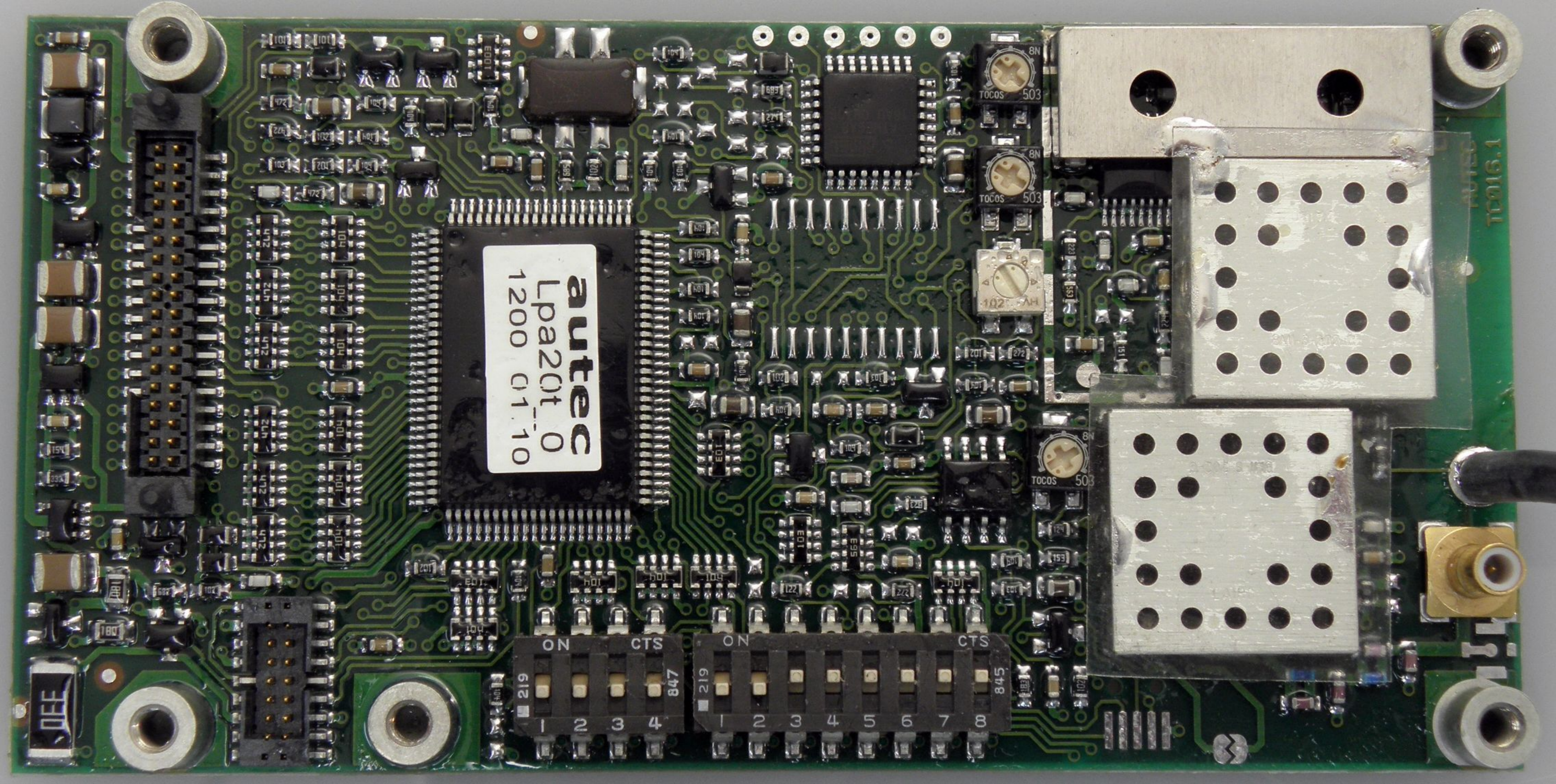
OFF

8N  
TOCOS 503

8N  
TOCOS 503

8N  
TOCOS 503

2-2012-S-1580



autec  
Lpa201\_0  
1200 01\_10

ON CTS 219 847  
1 2 3 4  
ON CTS 219 845  
1 2 3 4 5 6 7 8

TC016.1

Lpa20t\_0  
30C 47.10

DEE

ON CTS 0270  
ON CTS 612

1	2	3	4	5	6	7	8
9	10	11	12	13	14	15	16



www.rockwell.com

0270

CTS

ON

CTS

ON

WIKI

