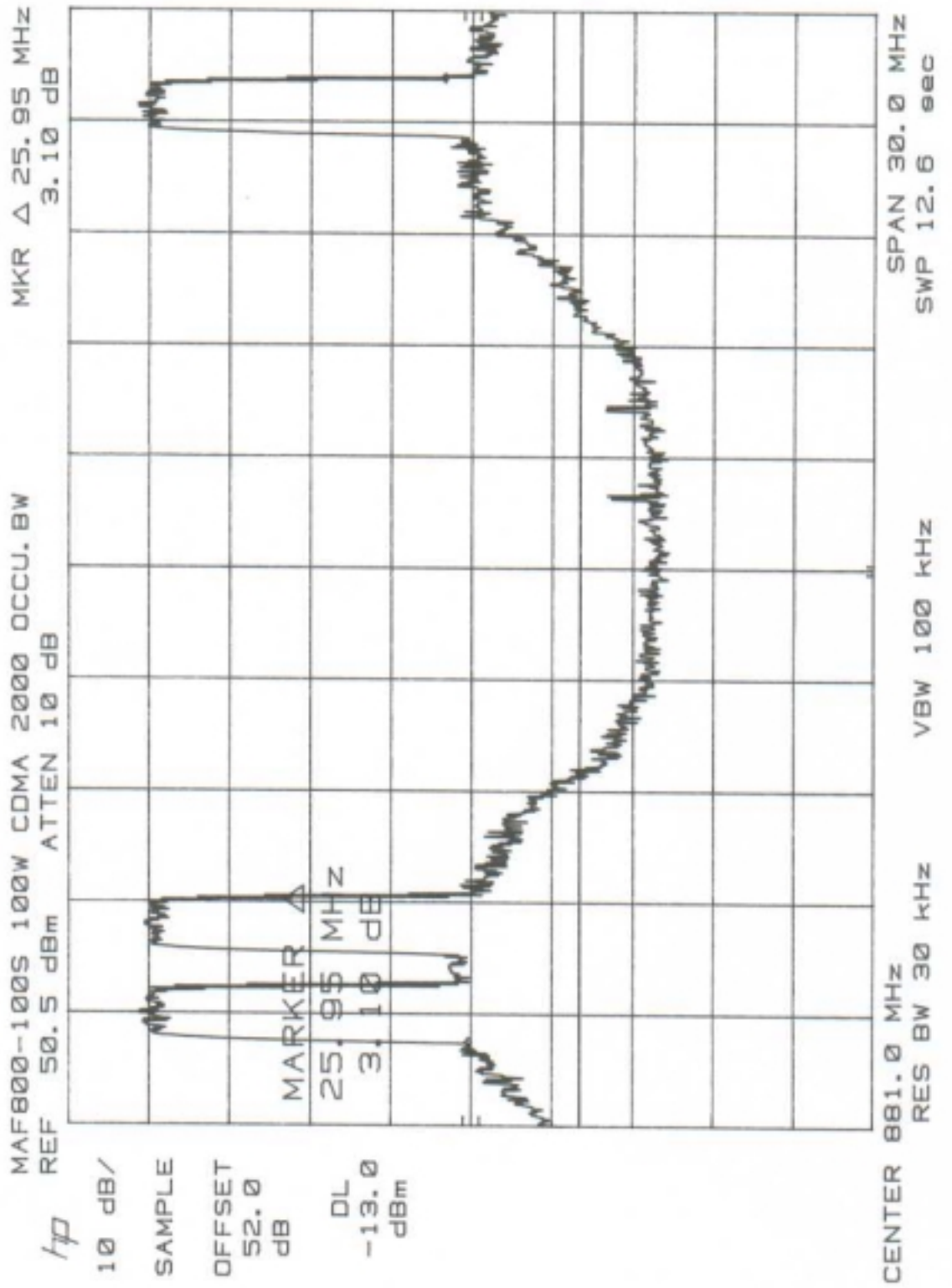
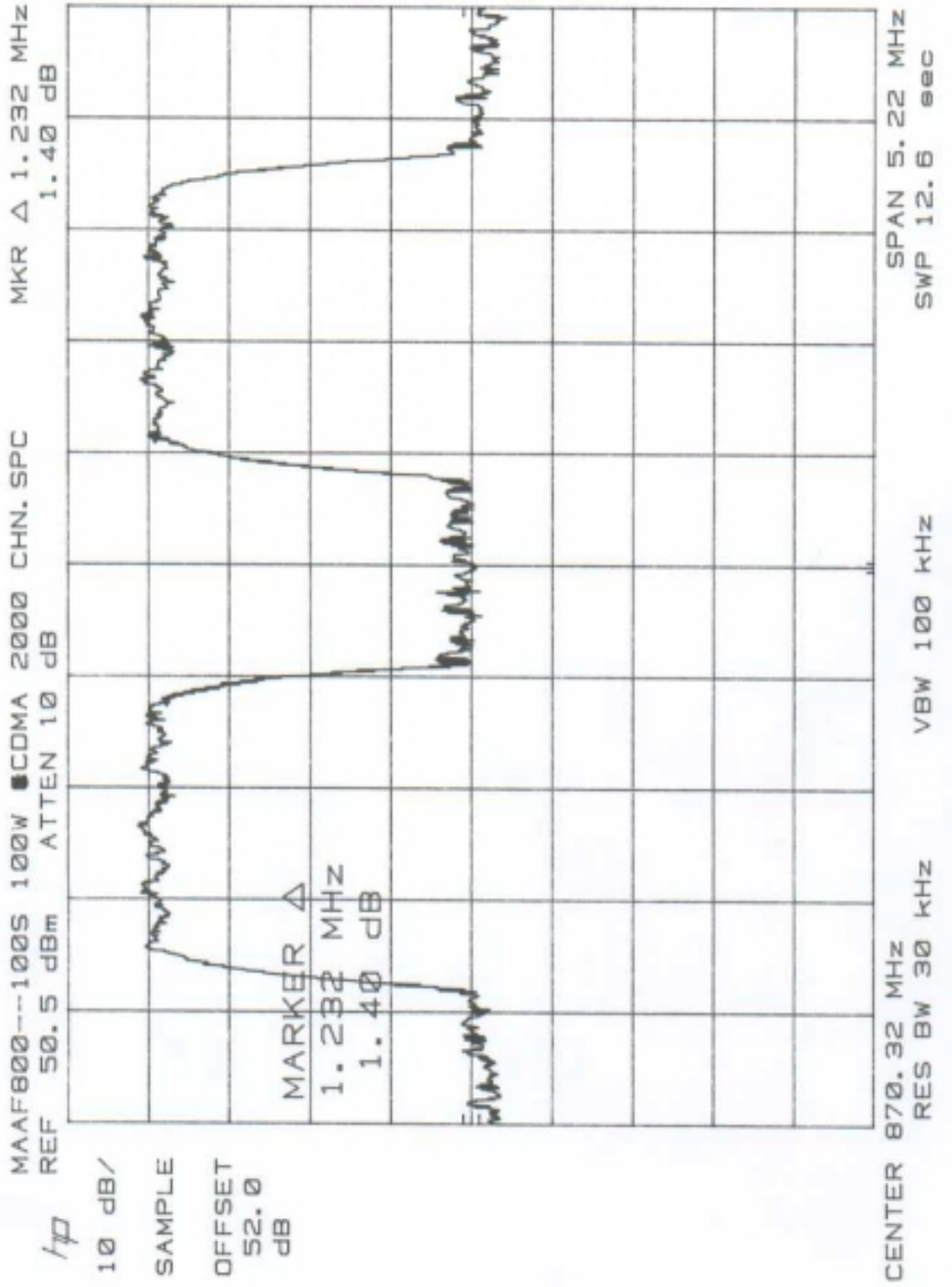


Data Package 3
CDMA 2000 Modulated Test Data





MAF800-100S 100W CDMA 2000 COND. SPUR.

REF 50.5 dBm ATTEN 10 dB

HP

10 dB/

SAMPLE

OFFSET

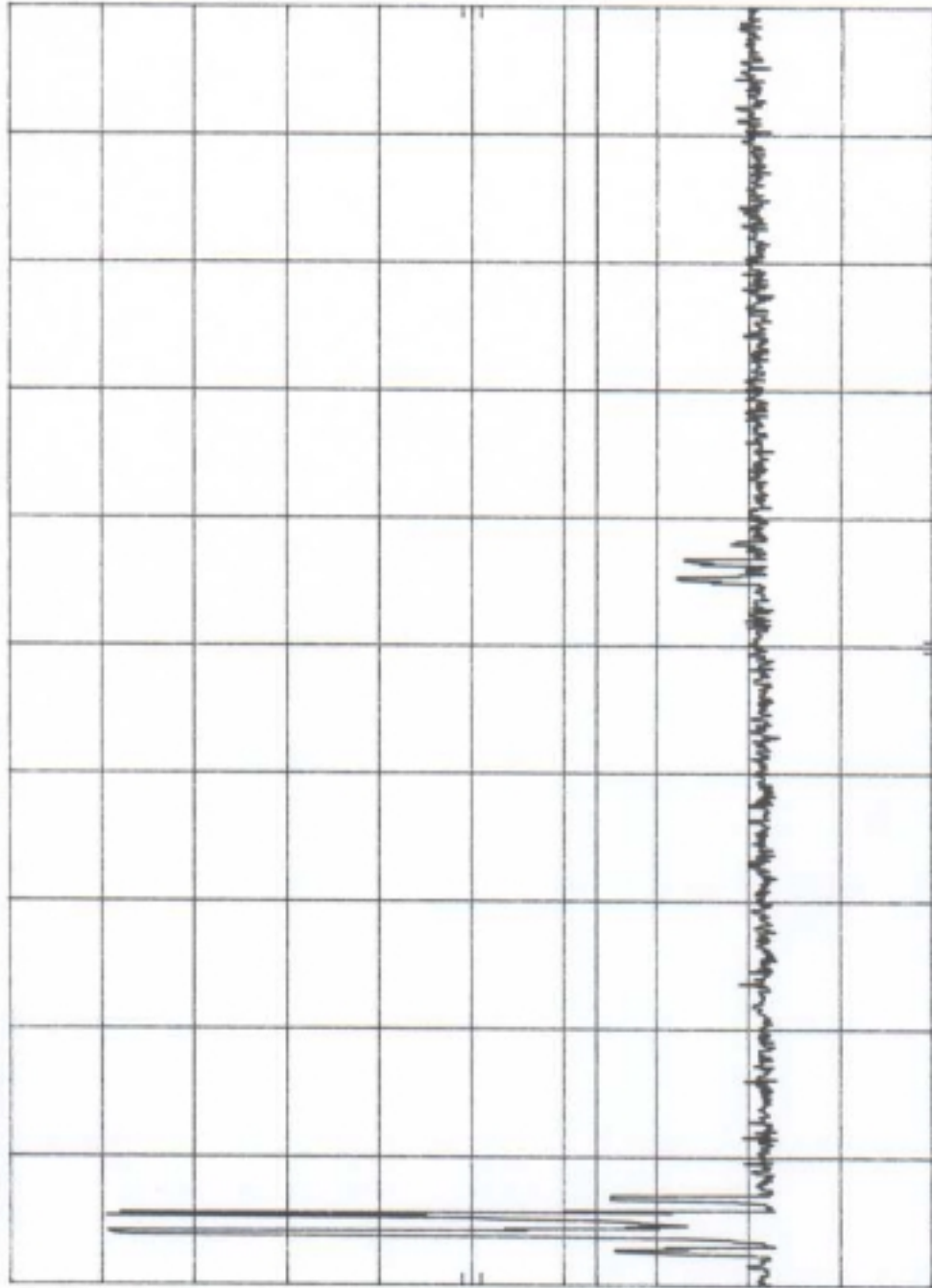
52.0

dB

DL

-13.0

dBm



START 800 MHz

RES BW 30 kHz

VBW 100 kHz

STOP 2.50 GHz

SWP 12.6 sec

MAF800-100S 100W CDMA 2000 COND. SPUR.

REF 50.5 dBm ATTEN 10 dB

f_p

10 dB/

SAMPLE

OFFSET

52.0
dB

DL

-13.0
dBm



START 2.50 GHz RES BW 30 kHz VBW 100 kHz STOP 5.80 GHz
SWP 9.90 sec

MAF800-100S 100W CDMA 2000 COND. SPUR.

REF 50.5 dBm ATTN 10 dB

HP

10 dB/

SAMPLE

OFFSET

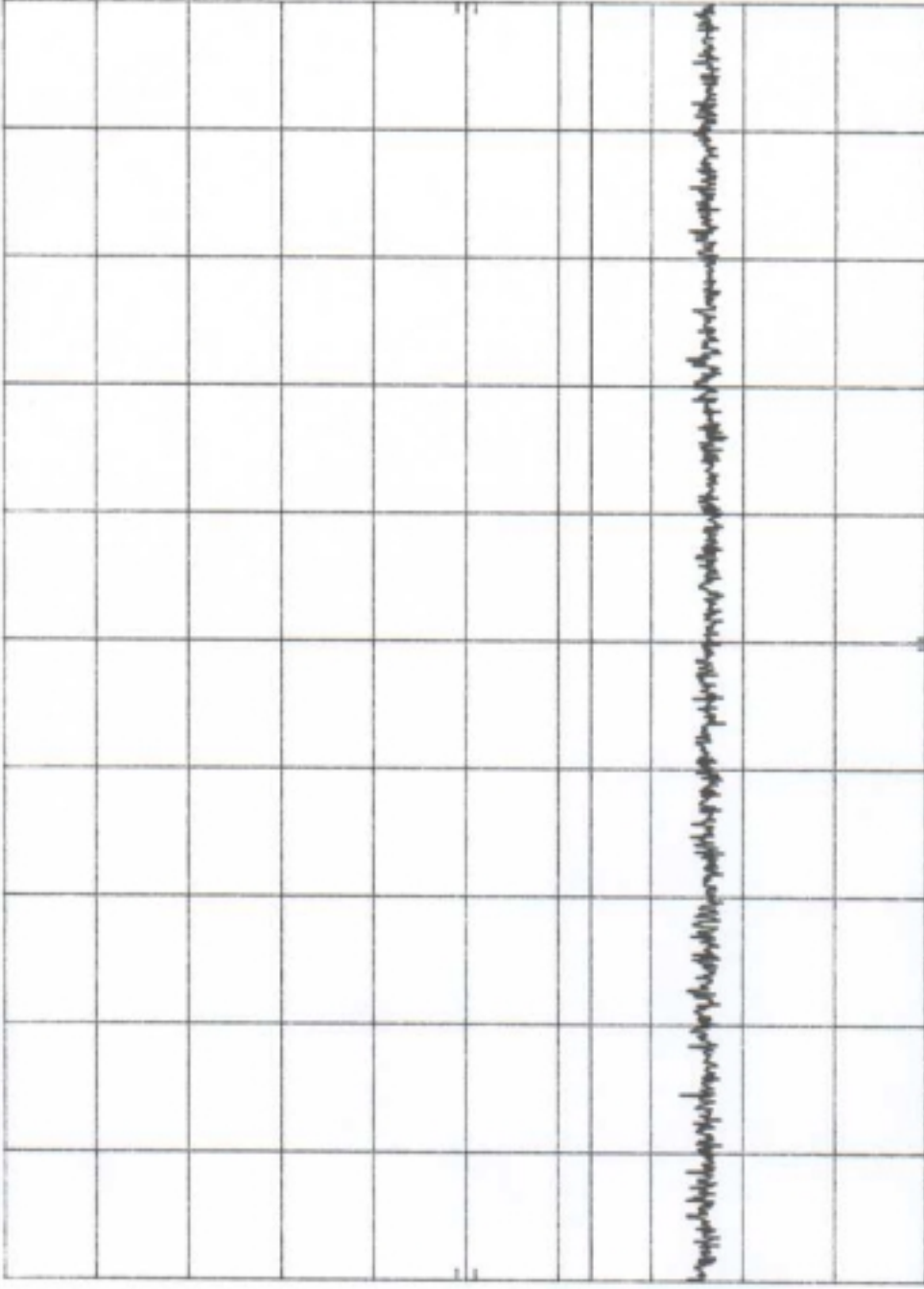
52.0

dB

DL

-13.0

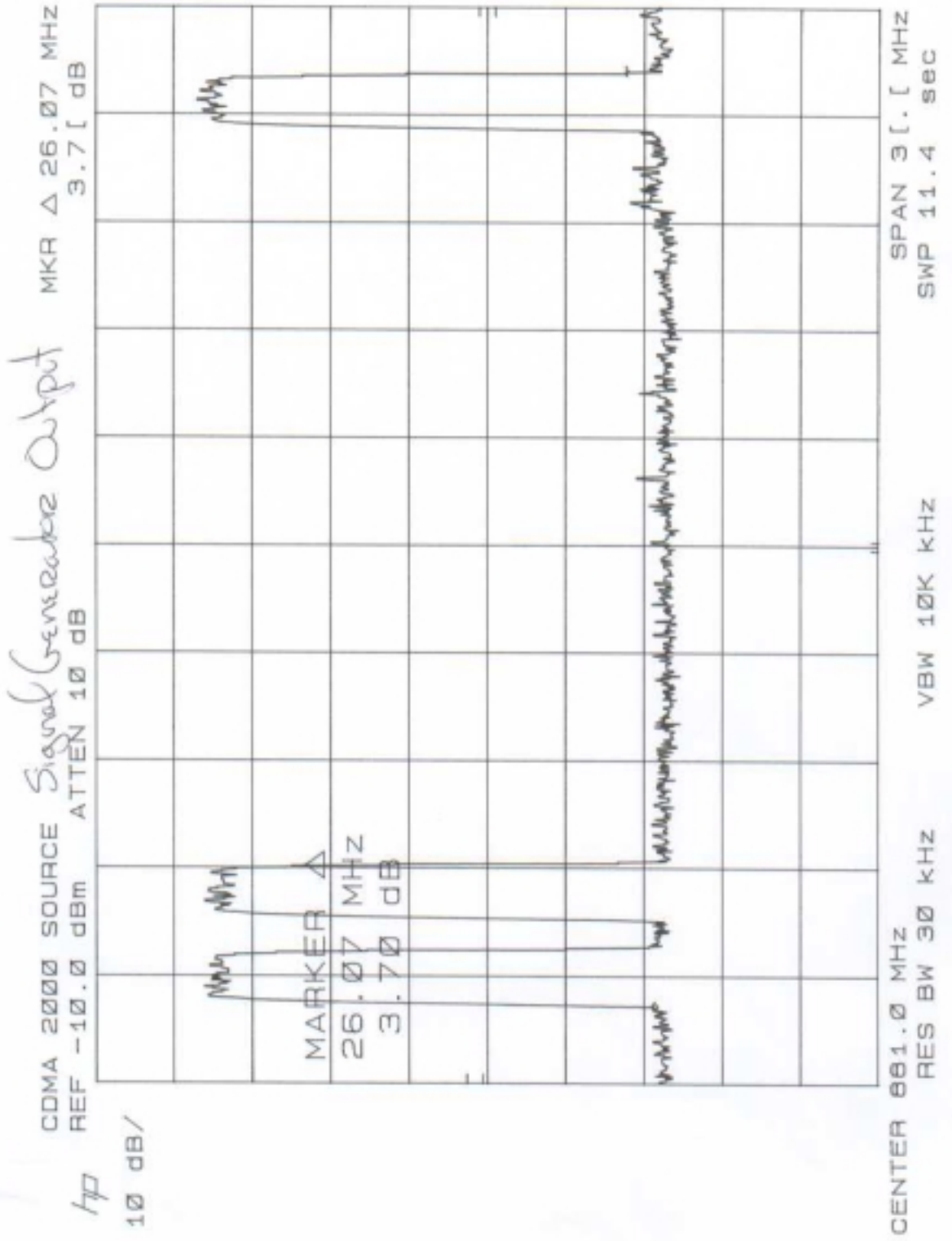
dBm



START 5.80 GHz
RES BW 30 kHz

VBW 100 kHz

STOP 10.00 GHz
SWP 12.6 sec



EMI Datasheet (ITE Devices)


	5969 Robinson Avenue Riverside, CA 92503 (909) 637-2630 FAX (909) 637-2704		Date: April 9, 2002 Specification	
	DNB Job Number:	28116	Serial Number: N/A FCC Class A	
	Customer:	Paradigm Wireless Systems, Inc.		
	Model Number:	MAF800-1005		
Description:	Multi Carrier Power Amplifier			

EUT performed within the requirements of the applicable Standard(s) [X] YES [] NO Signed <i>M. de Guara</i>									
Bcn	- A.H. Systems SAS-200/540 Biconical Antenna S/N 138 (30-200 Mhz)								
Log	- EMCO 3146 Log-Periodic Antenna S/N 1284 (200-1000 Mhz)								
Dcf	- Distance Correction Factor = 20*LOG ₁₀ (Test Distance/Specification Distance)								
Type	- Type of reading PK = Peak reading QP = Quasi-peak reading								
ns"	- Readings taken with a res bandwidth of 10KHz do to nearby ambient signal								

NOTES:


Freq	Meter	Bcn	Log	Cbl	Amp	Dcf	Corr	Lim dB	Delta	Corr uV	Lim uV	Delta	Typ	Tbl	Pt	Hgt
30.025	27.3	11.9	0.0	.7	-24.1	0	15.8	39.1	-23.3	6	90	-84	PK	175	H	1.20
30.267	25.0	11.9	0.0	.7	-24.1	0	13.5	39.1	-25.6	5	90	-85	PK	145	H	1.01
58.179	29.2	11.9	0.0	1.0	-24.0	0	18.1	39.1	-21	8	90	-82	PK	64	H	1.01
58.270	42.7	11.9	0.0	1.0	-24.0	0	31.6	39.1	-7.5	38	90	-52	PK	145	H	1.01
66.061	30.4	10.2	0.0	1.1	-24.1	0	17.6	39.1	-21.5	8	90	-82	PK	252	H	1.01
66.396	39.6	10.1	0.0	1.1	-24.1	0	26.7	39.1	-12.4	22	90	-68	PK	84	H	1.01
108.739	29.0	13.7	0.0	1.4	-24.0	0	20.1	43.5	-23.4	10	150	-140	PK	23	H	1.01
109.676	43.7	13.8	0.0	1.4	-24.0	0	34.9	43.5	-8.6	56	150	-94	PK	301	H	1.01
225.902	29.1	0.0	14.3	2.0	-24.0	0	21.4	46.4	-25.0	12	210	-198	PK	99	H	1.01
260.044	28.4	0.0	14.3	2.2	-24.2	0	20.7	46.4	-25.7	11	210	-199	PK	112	H	1.39
262.089	31.6	0.0	14.4	2.2	-24.2	0	24	46.4	-22.4	16	210	-194	PK	249	H	2.61
268.094	32.0	0.0	14.9	2.2	-24.2	0	24.9	46.4	-21.5	18	210	-192	PK	257	H	2.61
274.068	29.6	0.0	15.3	2.3	-24.2	0	23	46.4	-23.4	14	210	-196	PK	241	H	2.62

Radiated Spurious Data

	5969 Robinson Avenue Riverside, CA 92503 (909) 637-2630 FAX (909) 637-2704				
	DNB Job Number:	28116	Date:	13 April 2002	
	Customer:	Paradigm Wireless Systems			
	Model Number:	MAF800-100S	Serial Number:	N/A	
Description:	Multi Carrier Power Amplifier			Specification	☑ FCC Parts: 90

Transmitter Number	Fundamental Frequency in MHz	Rated Output Power in Watts	Channel Spacing in kHz	Modulation
1 - Band 1	881	100	25	"Worst Case"

Harm	Freq in Mhz	Dipole	H Gain	Horz Mtr	Power	Corr'd	Vert Mtr	Power	Corr'd	Antenna
Fund	881	3.30	-	-25.7	-21.4	-21.4	-28.8	-24.5	-24.5	Log
2	1.762	-	7.83	-56.5	-39.7	-47.53	-55.9	-39.1	-46.93	Horn
3	2.645	-	8.70	-47.5	-35.1	-43.8	-48.6	-36.2	-44.9	Horn
4	3.524	-	8.98	-57.1	-41.7	-50.68	-64.5	-49.1	-58.08	Horn
5	4.405	-	9.63	-68.6	-51.2	-60.83	-68.3	-50.9	-60.53	Horn
6	5.286	-	10.29	-69.1	-49.9	-60.19	-69.0	-49.8	-60.09	Horn
7	6.167	-	10.45	-63.7	-43.5	-53.95	-64.5	-44.3	-54.75	Horn
8	7.048	-	10.21	-64.1	-40.7	-50.91	-64.5	-43.5	-53.71	Horn
9	7.929	-	10.29	-64.3	-42.3	-52.59	-64.0	-42.0	-52.29	Horn
10	8.810	-	11.20	-64.8	-43.6	-54.8	-64.6	-43.4	-54.6	Horn

	5969 Robinson Avenue Riverside, CA 92503 (909) 637-2630 FAX (909) 637-2704	
	DNB Job Number: 28116 Customer: Paradigm Wireless Systems Model Number: MAF800-100S Description: Multi Carrier Power Amplifier	Date: 13 April 2002 Serial Number: N/A

Radiated Spurious Data

		Specification	
		Ⓢ FCC Parts: 90	

Freq	881	1.762	2.645	3.524	4.405	5.286	6.167	7.048	7.929	8.810
Horz Corr'd	-21.4	-47.53	-43.8	-50.68	-60.83	-60.19	-53.95	-50.91	-52.59	-54.8
Vert Corr'd	-24.5	-46.93	-44.9	-58.08	-60.53	-60.09	-54.75	-53.71	-52.29	-54.6
12.5 kHz Limit	-20.0	-20.0	-20.0	-20.0	-20.0	-20.0	-20.0	-20.0	-20.0	-20.0
25 kHz Limit	-13.0	-13.0	-13.0	-13.0	-13.0	-13.0	-13.0	-13.0	-13.0	-13.0

