



360 Herndon Parkway
Suite 1400
Herndon, VA 20170
<http://www.rheintech.com>

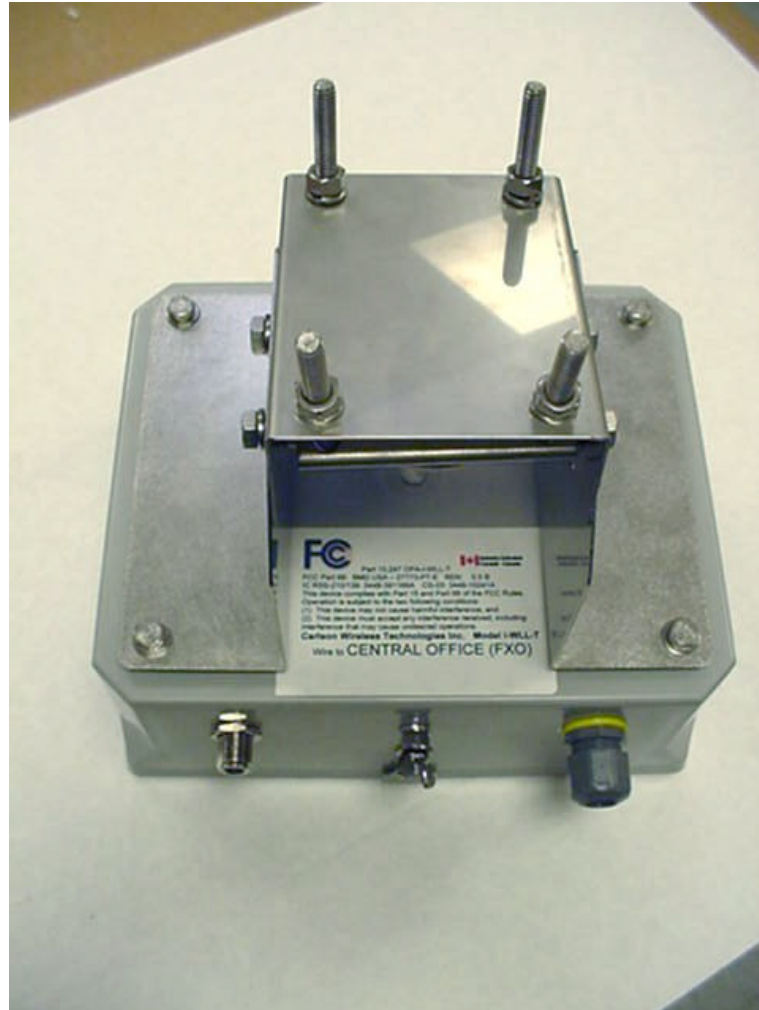
Carlson Wireless Technologies, Inc.
I-WLL-T
FCC ID: OPA-I-WLL-T
Work Order: 2000422

13 Label information

13.1 FCC ID LABEL

Please see the following pages

13.2 LOCATION OF LABELS ON EUT



FCC LABEL ARTWORK (FXO)

22 October, 2000

American Telecommunications Certification Body, Inc.
6731 Whittier Avenue
Suite C110
McLean, VA 22101

RE: Certification Application
FCC ID: OPA-I-WLL-T

This is the label artwork we use for the FXO half of the I-WLL system:



Part 15.247 OPA-I-WLL-T



FCC Part 68: BMD USA – 27773-PT-E REN: 0.5 B
IC RSS-210/139: 3448-391166A CS-03: 3448-10241A
This device complies with Part 15 and Part 68 of the FCC Rules.
Operation is subject to the two following conditions:
(1) This device may not cause harmful interference, and
(2) This device must accept any interference received, including
interference that may cause undesired operations.

Carlson Wireless Technologies Inc. Model i-WLL-T

Wire to **CENTRAL OFFICE (FXO)**

Signatory



James R. Carlson

FCC LABEL ARTWORK (FXS)

22 October, 2000

American Telecommunications Certification Body, Inc.
6731 Whittier Avenue
Suite C110
McLean, VA 22101

RE: Certification Application
FCC ID: OPA-I-WLL-T

This is the label artwork we use for the FXS half of the I-WLL system:



Part 15.247 OPA-I-WLL-T



FCC Part 68: BMD USA – 27773-PT-E REN: 0.5 B
IC RSS-210/139: 3448-391166A CS-03: 3448-10241A
This device complies with Part 15 and Part 68 of the FCC Rules.
Operation is subject to the two following conditions:
(1) This device may not cause harmful interference, and
(2) This device must accept any interference received, including
interference that may cause undesired operations.

Carlson Wireless Technologies Inc. Model i-WLL-T
Wire to **SUBSCRIBER** telephone(FXS)

Signatory



James R. Carlson