

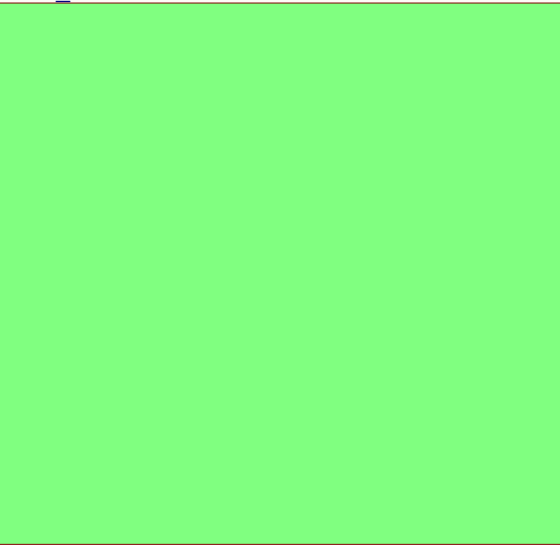
i-B350L - Tag with Standard housing

Page 1: Title Sheet, revision notes
 Page 2: 05-15-02-10_iB350L


Version notes:

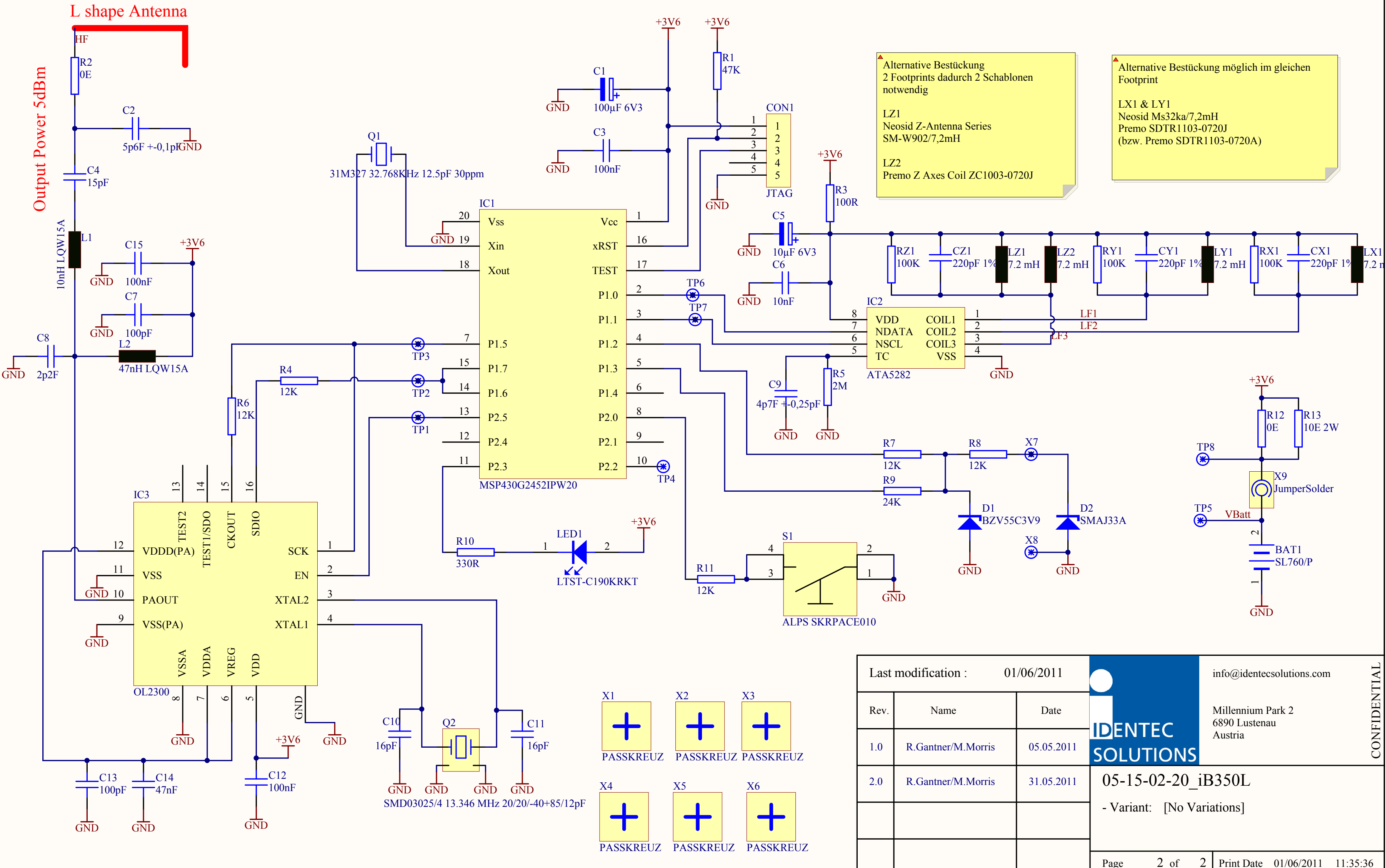
<i>Version 1.0</i>	Circuit and layout modification from previous i-B350 design. Previous design used PMA7110; now use MSP430 & OL2300 (too much current consumption)	10-05-2011
<i>Version 2.0</i>	- IC3 (OL2300) rerouted - pad layout mirrored (fixed) - added testpoints (TP6, TP7, TP8) - Moved R13 1mm closer to battery (for F housing)	31-05-2011

05-15-02-20_iB350L.SchDoc



PCB1
 PCB Data
 see GD_05-15-02-20_iB350L.zip

Last modification :		31/05/2011	 info@identecsolutions.com Millennium Park 2 6890 Lustenau Austria	CONFIDENTIAL
Rev.	Name	Date		
1.0	R.Gantner/M.Morris	05.05.2011	05-15-02-20_iB350L - Variant: [No Variations]	Page 1 of 2 Print Date 01/06/2011 11:35:36
2.0	R.Gantner/M.Morris	31.05.2011		



Alternative Bestückung
2 Footprints dadurch 2 Schablonen
notwendig

LZ1
Neosid Z-Antenna Series
SM-W902/7,2mH

LZ2
Premo Z Axes Coil ZC1003-0720J

Alternative Bestückung möglich im gleichen
Footprint

LX1 & LY1
Neosid Ms32ka/7,2mH
Premo SDTR1103-0720J
(bzw. Premo SDTR1103-0720A)

Last modification : 01/06/2011

Rev.	Name	Date
1.0	R.Gantner/M.Morris	05.05.2011
2.0	R.Gantner/M.Morris	31.05.2011

info@identecolutions.com

IDENTEC SOLUTIONS

Millennium Park 2
6890 Lustenau
Austria

05-15-02-20_iB350L
- Variant: [No Variations]

Page 2 of 2 | Print Date 01/06/2011 11:35:36

CONFIDENTIAL