

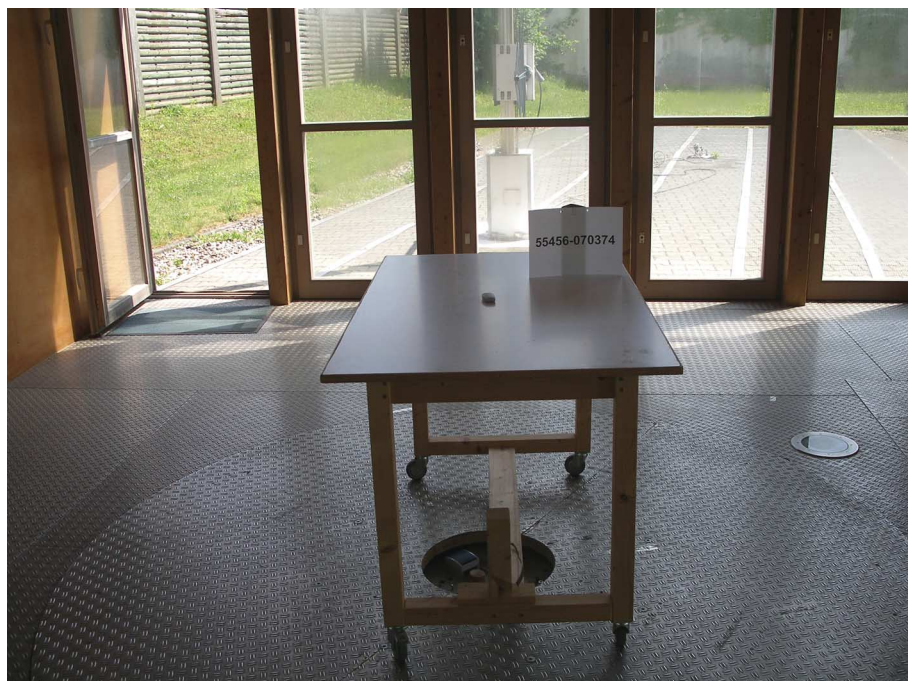
**Test setup for radiated emission measurement
(fully anechoic room)**



**Test setup for radiated emission measurement
(fully anechoic room) - continued -**



**Test setup for radiated emission measurement
(open field test site)**



**Test setup for radiated emission measurement
(open field test site) - continued -**



**Test setup for radiated emission measurement
(open field test site) - continued -**



**Test setup for radiated emission measurement
(open field test site) - continued -**



**Test setup for radiated emission measurement
(open field test site) - continued -**



**Test setup for radiated emission measurement
(open field test site) - continued -**

