

Internal Photos



Figure 1 - Removed back case



Figure 2a – Antennas 2400MHz



Figure 2b – Antenna 900MHz



Figure 3 - RF antenna view

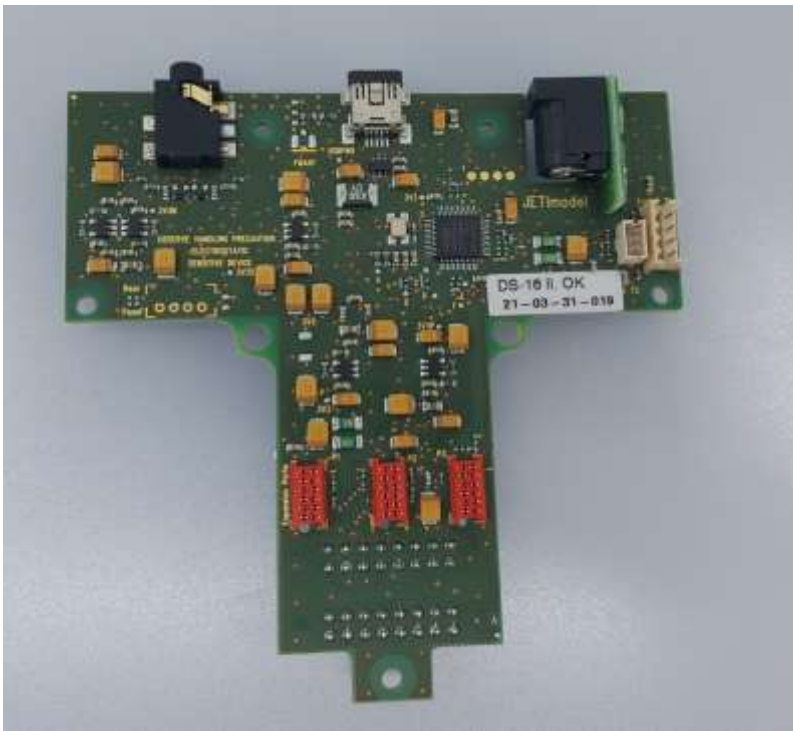


Figure 4 - DS-CONT Board Front



Figure 5 - DS-CONT Board back



Figure 6 - DS-PW-E2 Board Front



Figure 7 - DS-PW-E2 Board back



Figure 8 - DS-SWS-2 Board Front



Figure 9 - DS-SWS-2 Board back

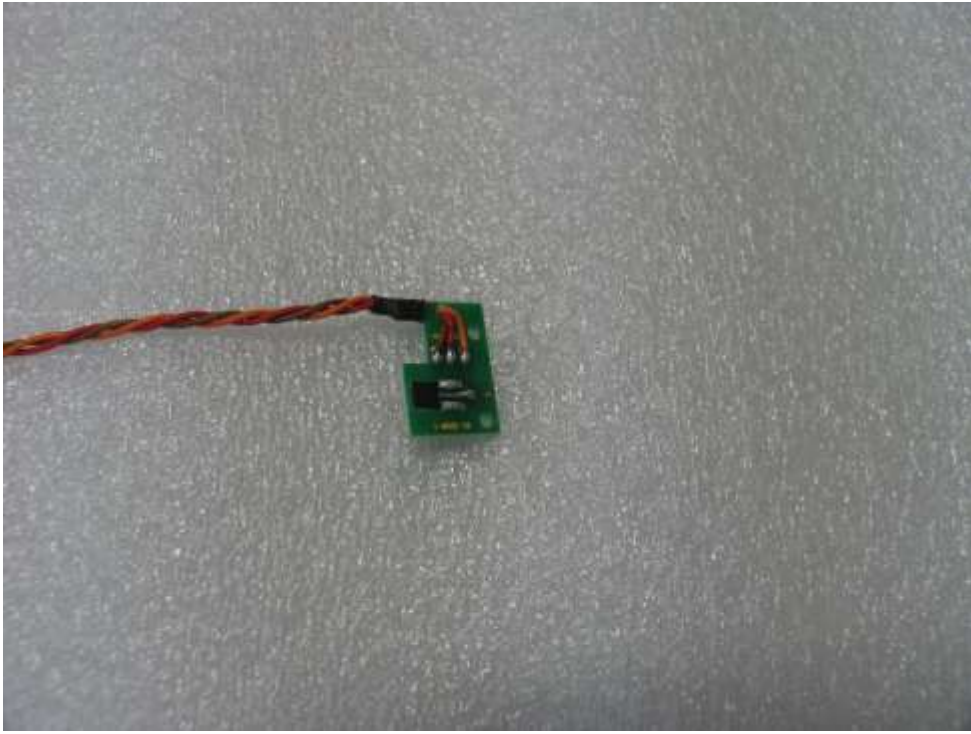


Figure 10 - DC-XHall-1 Board Front

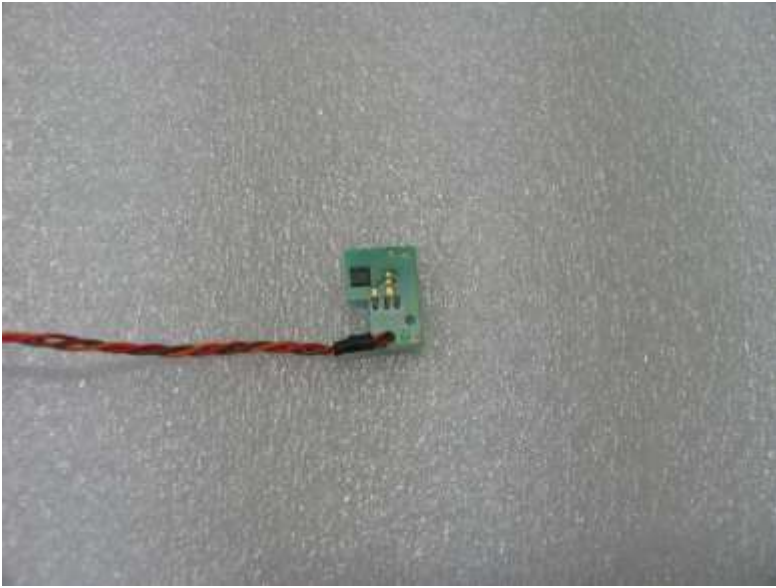


Figure 11 - DC-XHall-1 Board back

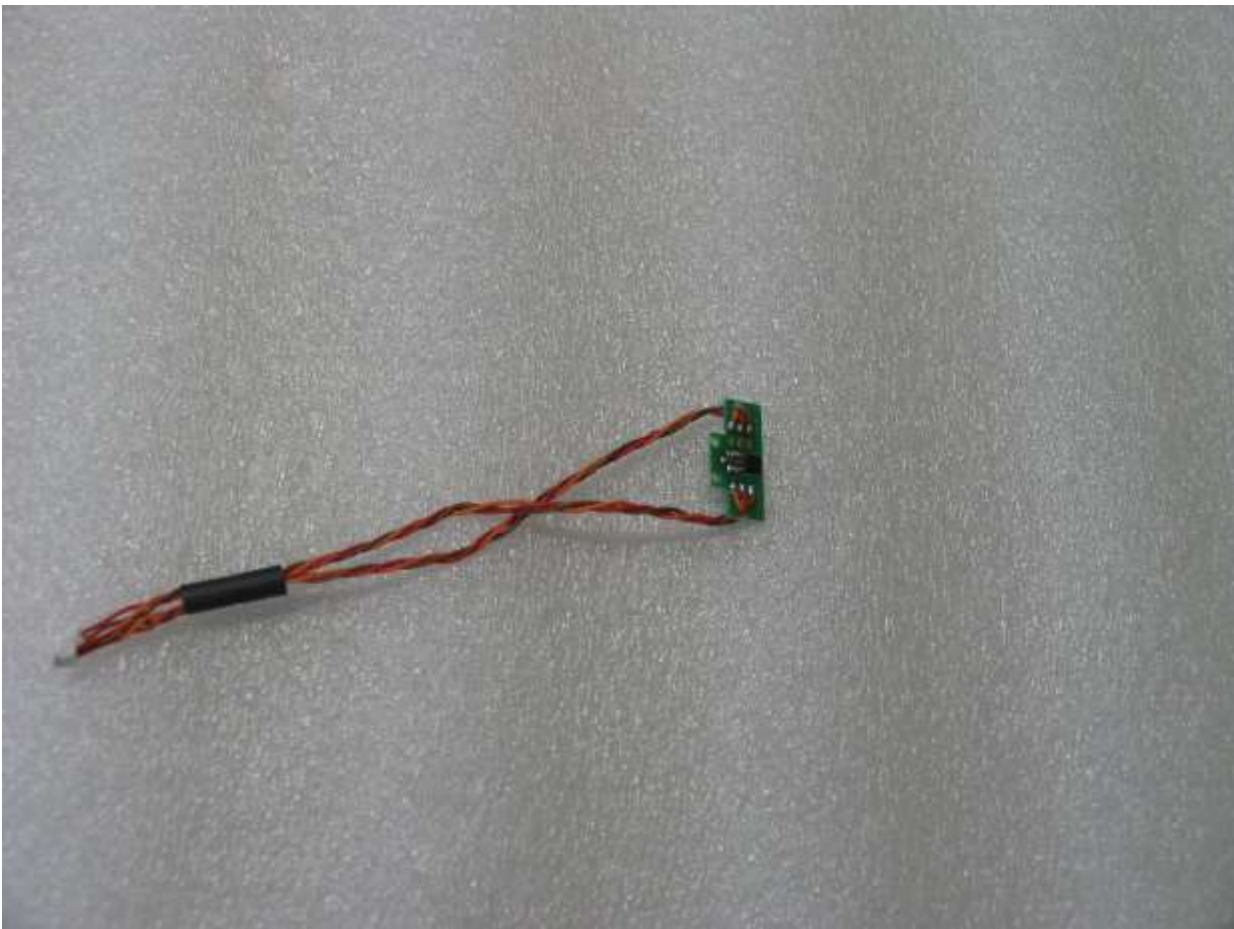


Figure 12 - DC-YHall-2 Board front

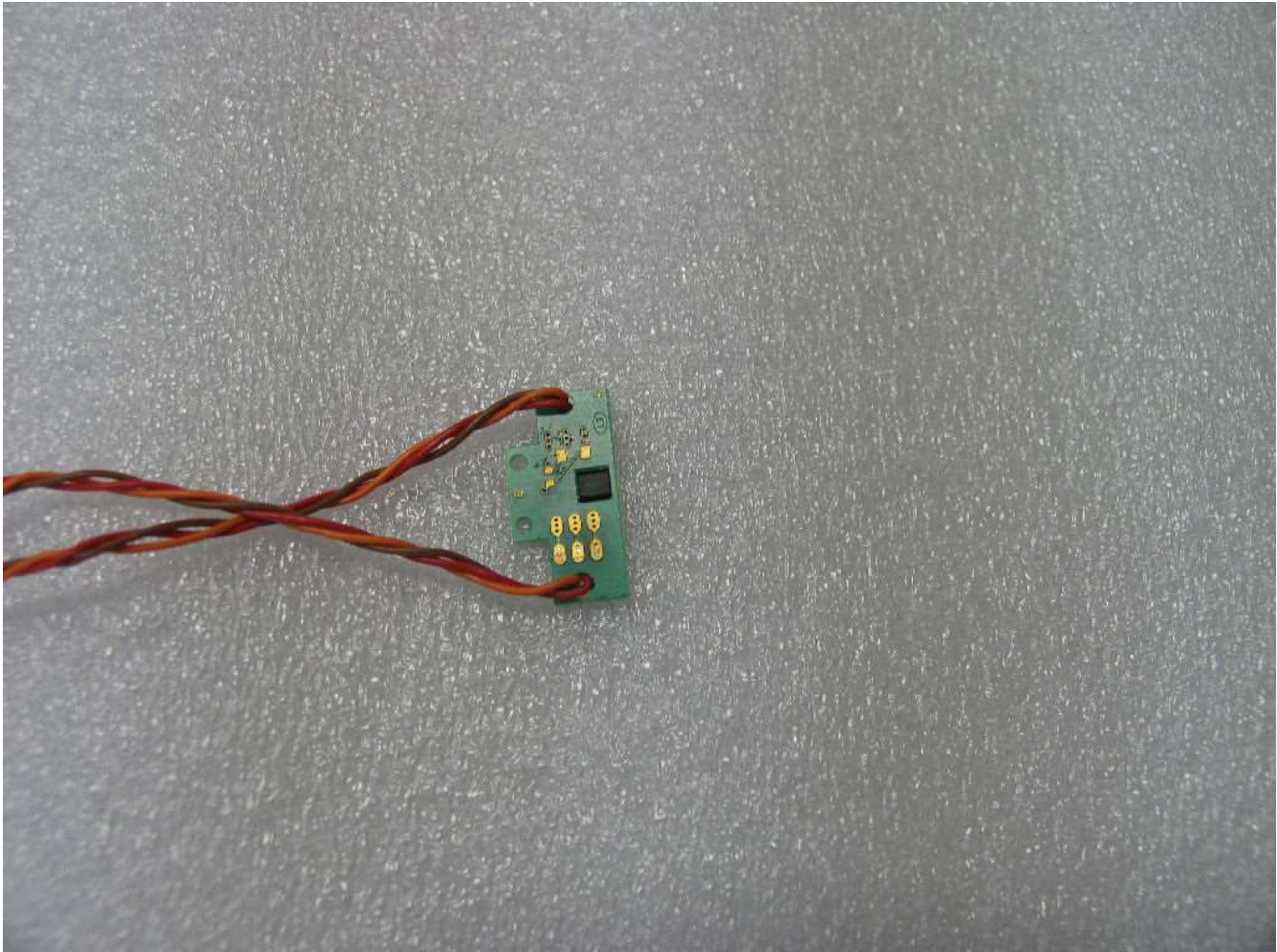


Figure 13 - DC-YHall-2 Board back



Figure 14 - DC-SWP-1 Board front

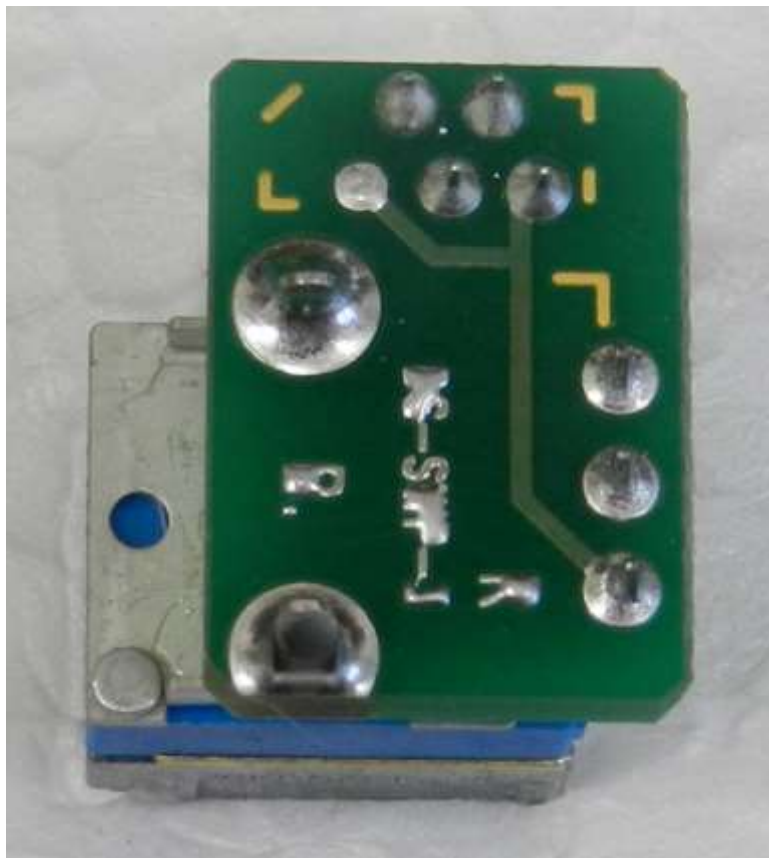


Figure 15 - DC-SWP-1 Board back



Figure 21 - DS-PW Board front

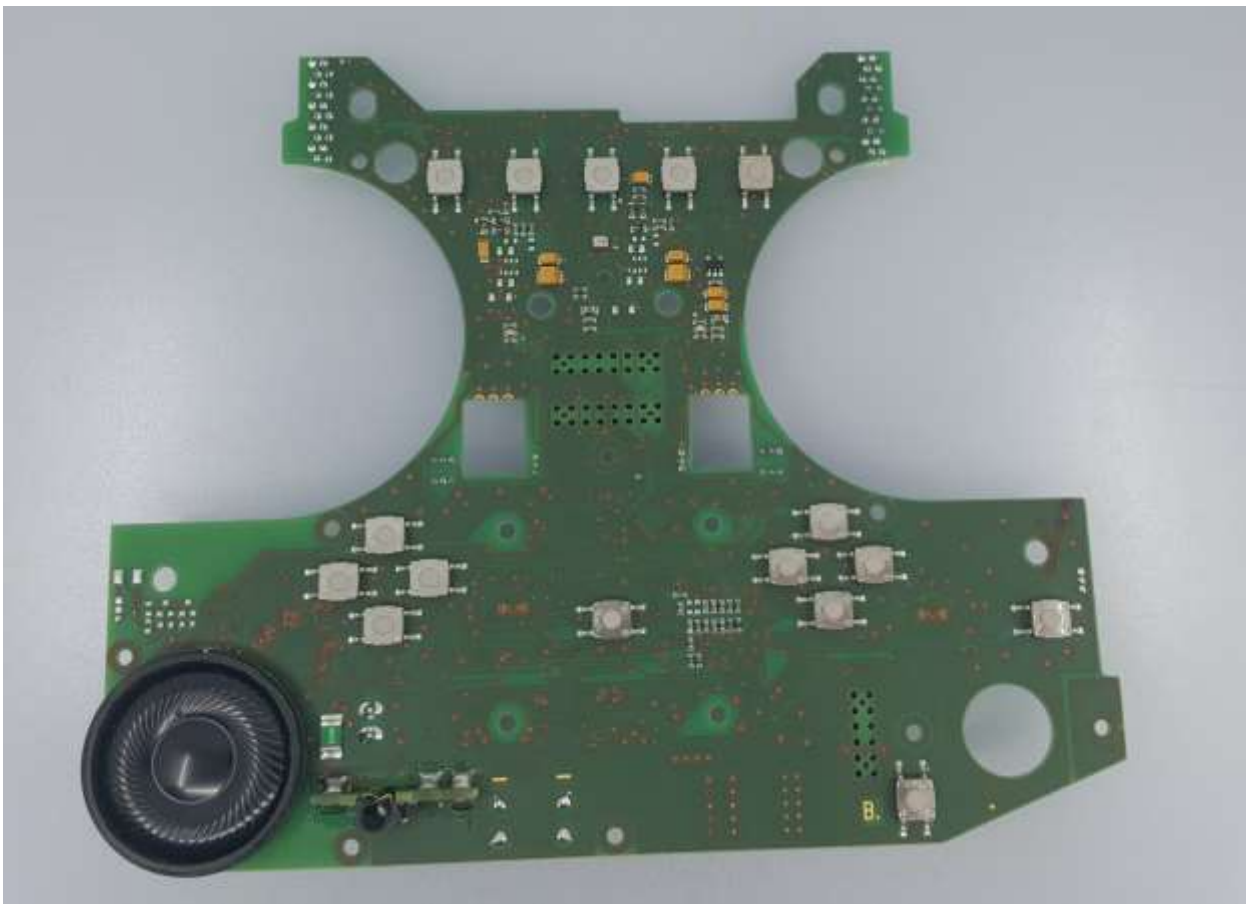


Figure 21 - DS-PW Board back



Figure 22 - LCD front

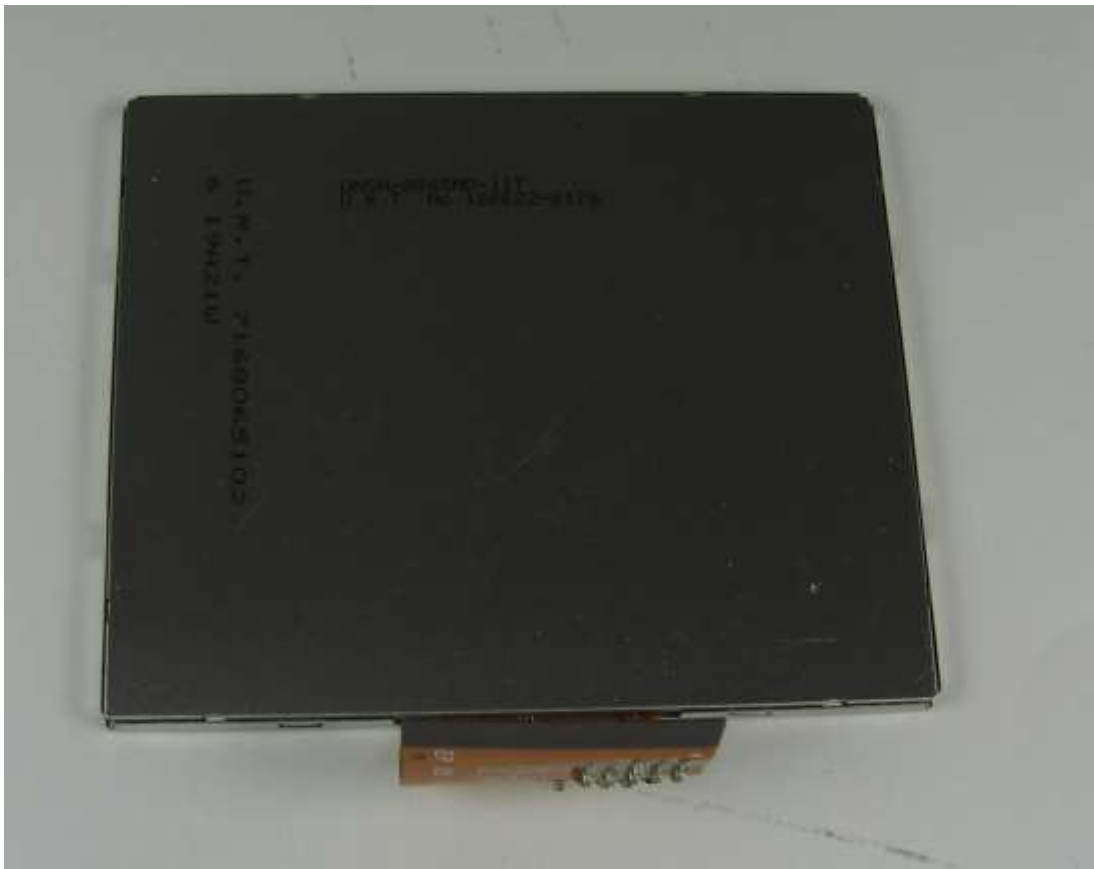


Figure 23 - LCD back

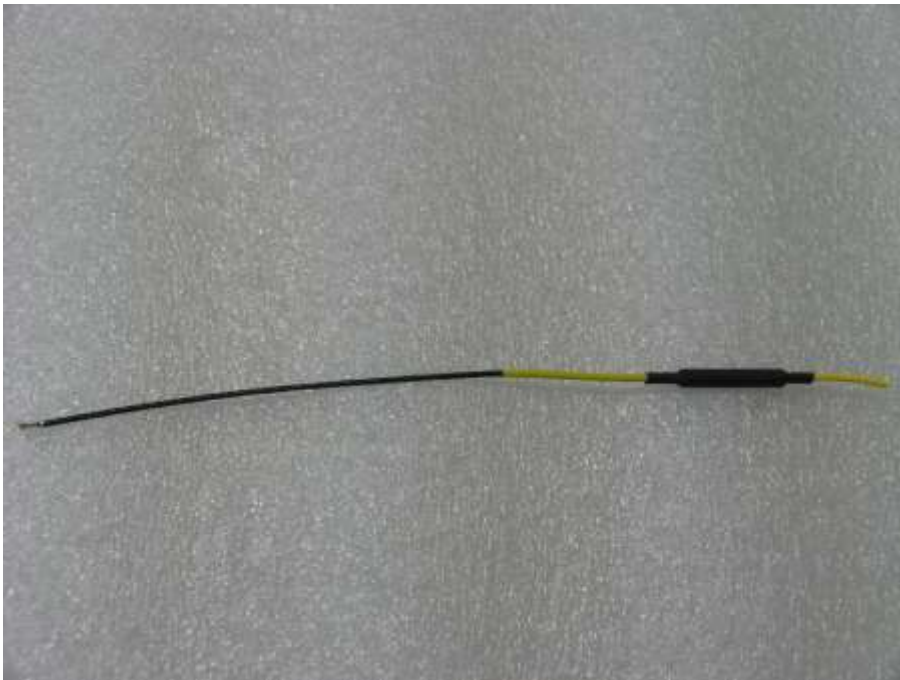


Figure 24b – Antenna 2400MHz



Figure 24a – Antenna 900MHz



Figure 25 - DS-TFT Board back

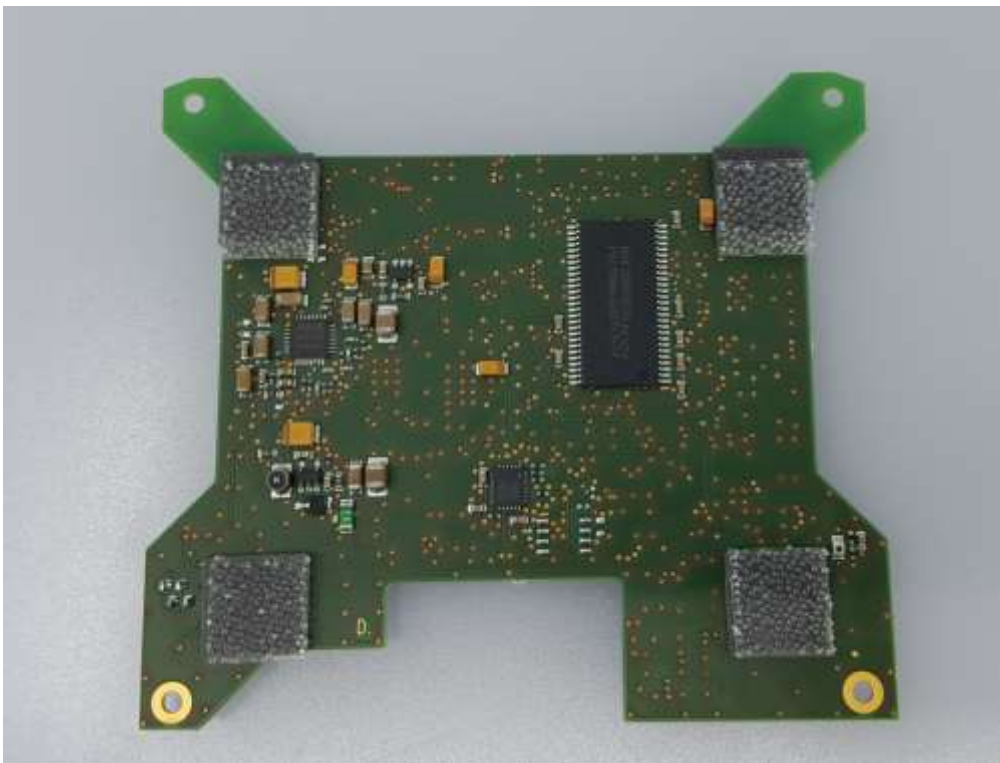


Figure 26 - DS-TFT Board front