

Internal Photos

Figure 1 - Removed back case

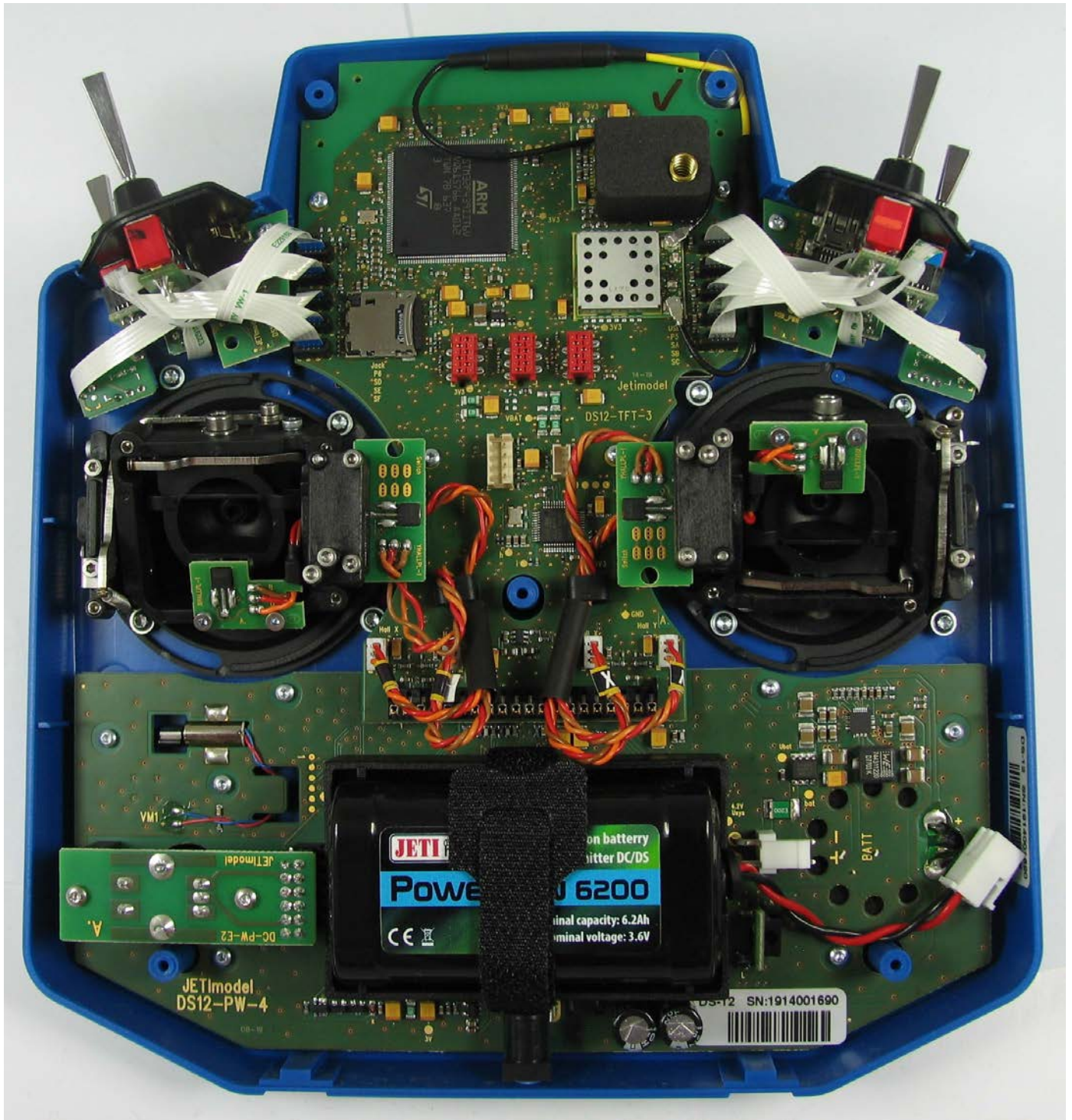




Figure 2a – Antennas 2400MHz

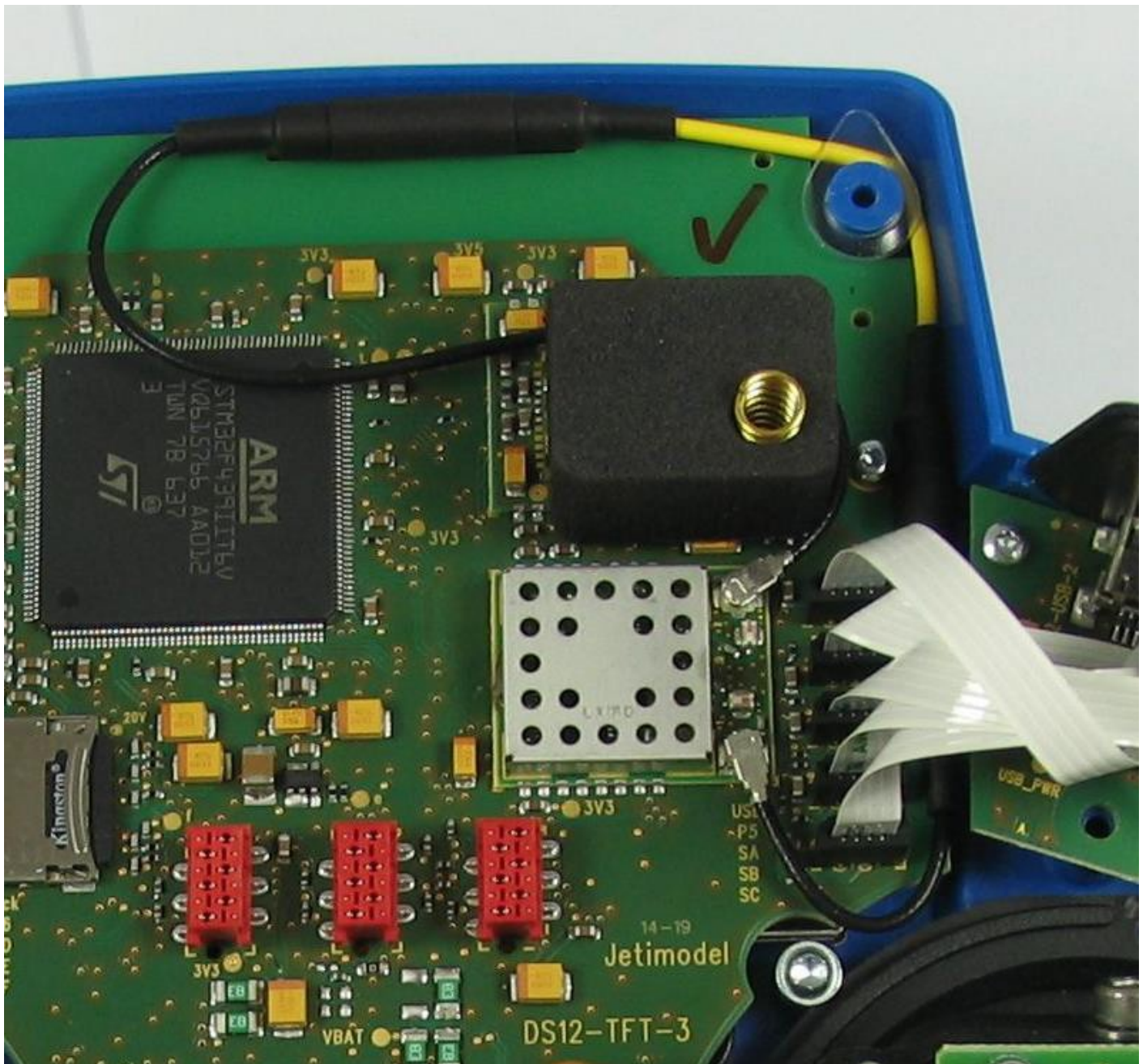


Figure 2b – Antenna 900MHz



Figure 3a - RF module 2400MHz view

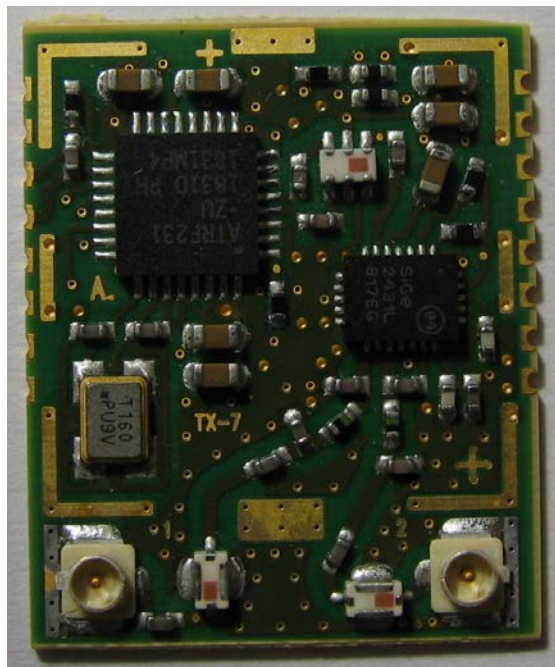
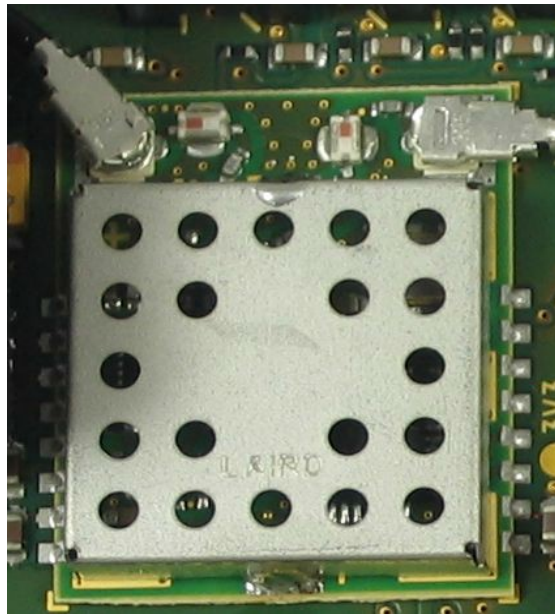




Figure 3b - RF module 900MHz view

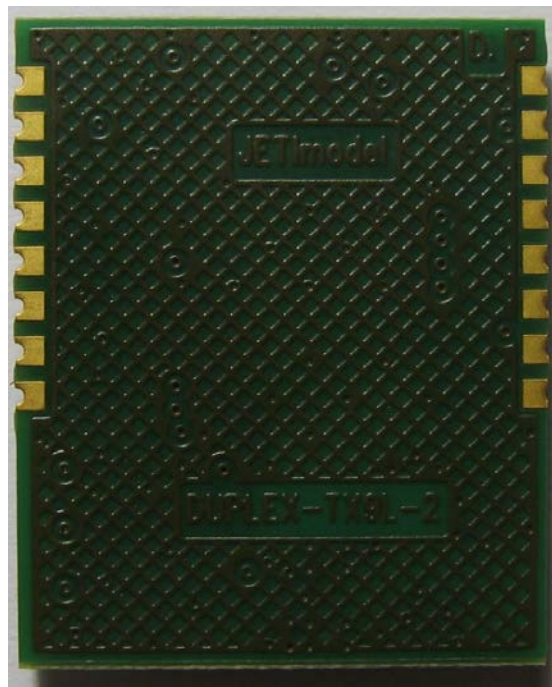
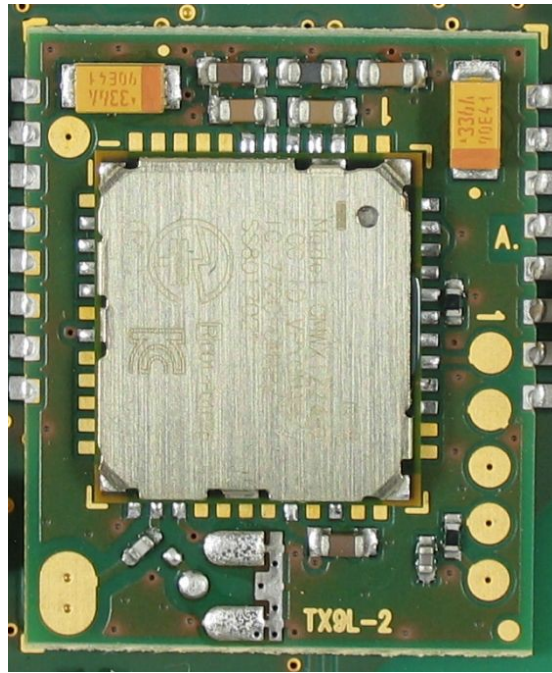


Figure 4 - DS12-TFT-3 Board Front

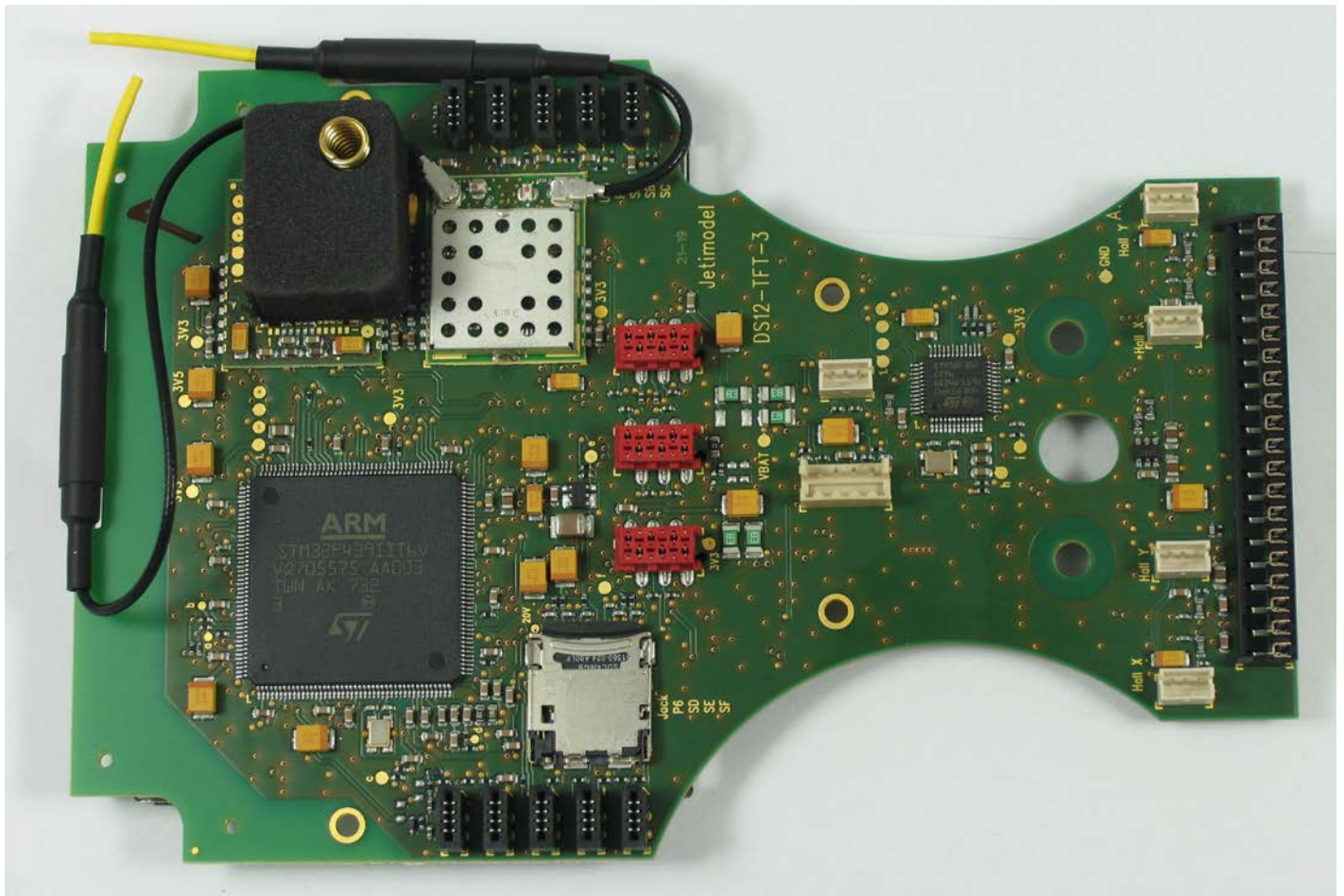


Figure 5 - DS12-TFT-3 Board back

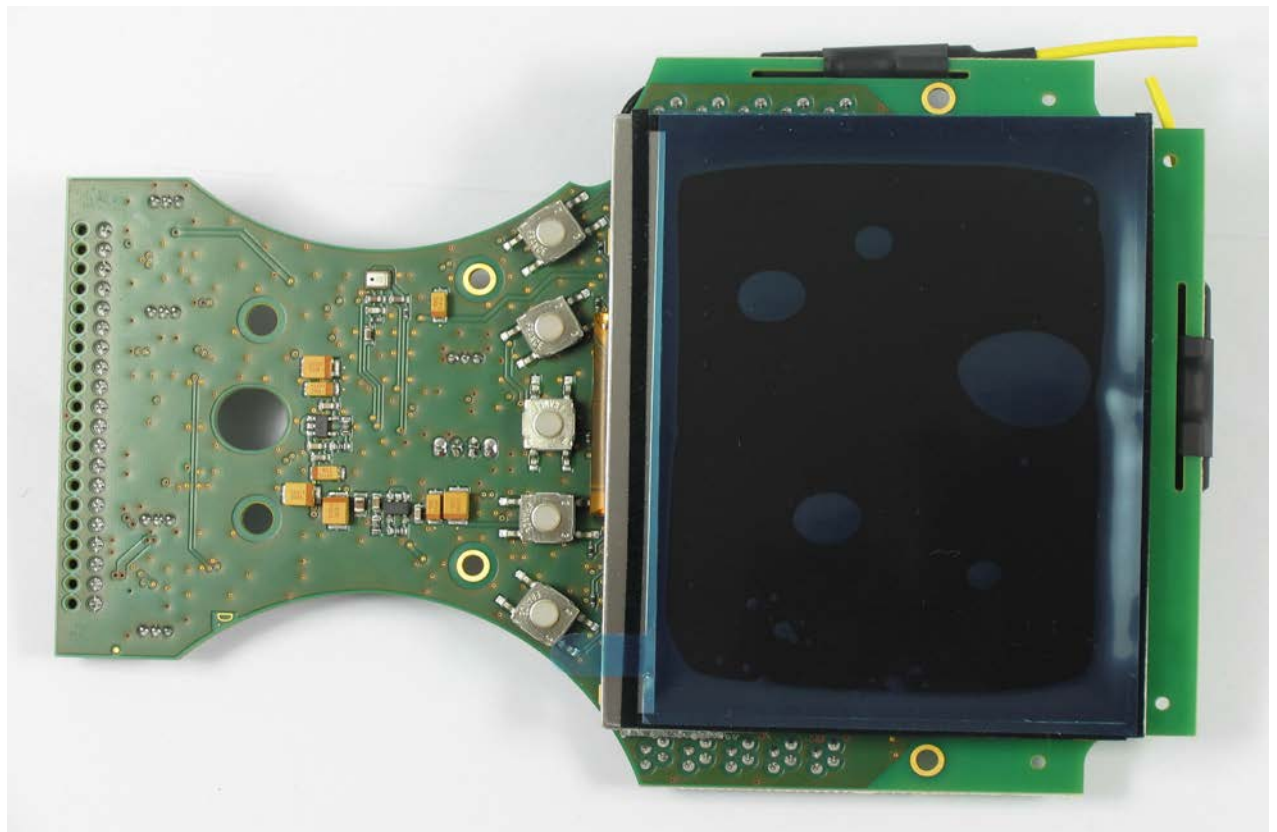




Figure 6 – DS12-PW-5 Borad Front

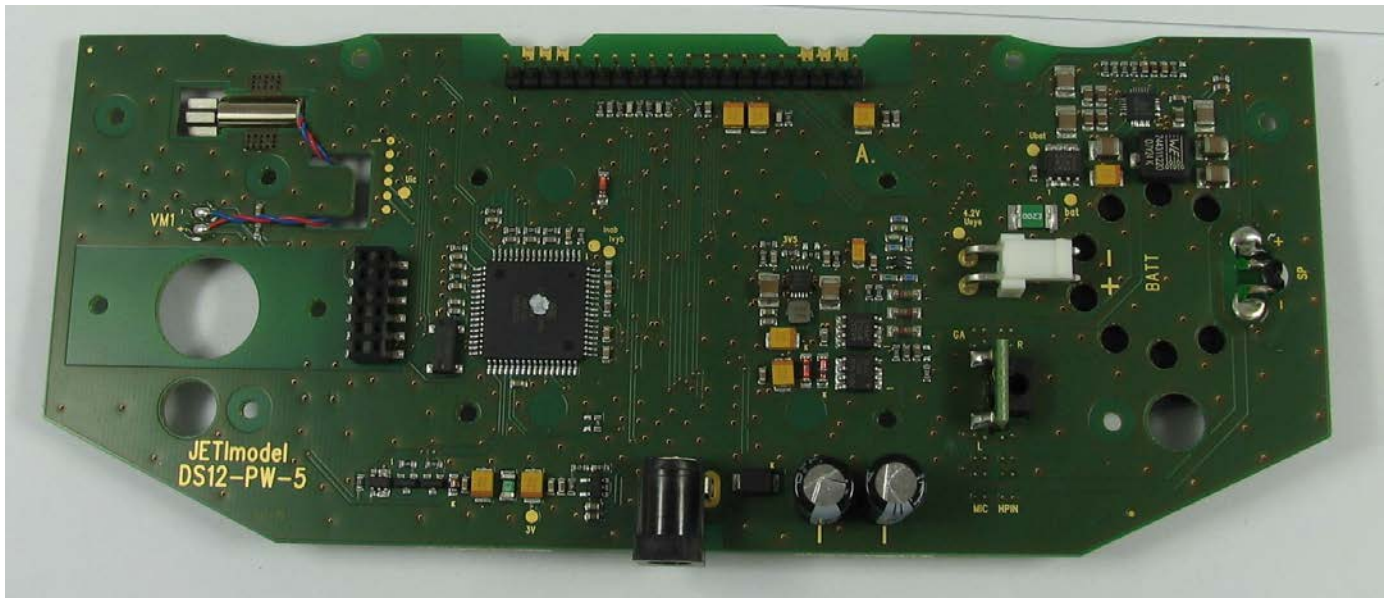


Figure 7 – DS12-PW-5 Borad back

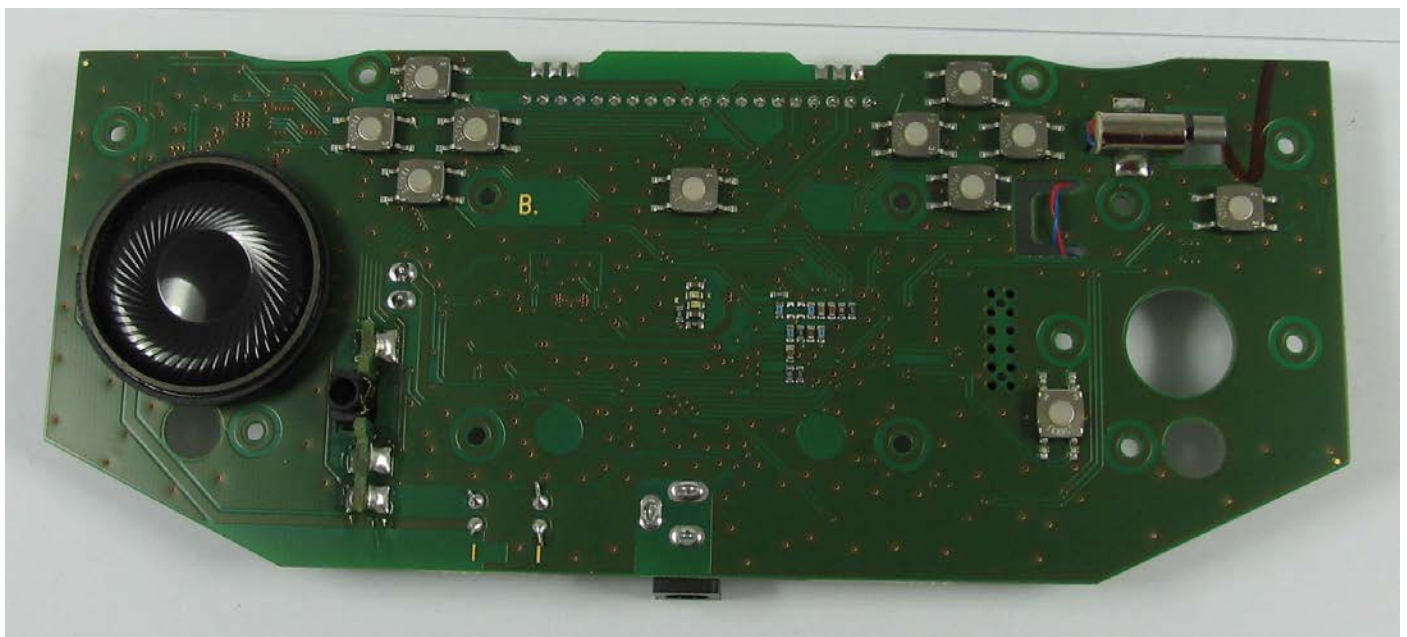


Figure 8 – DS12-USB-2 Borad front

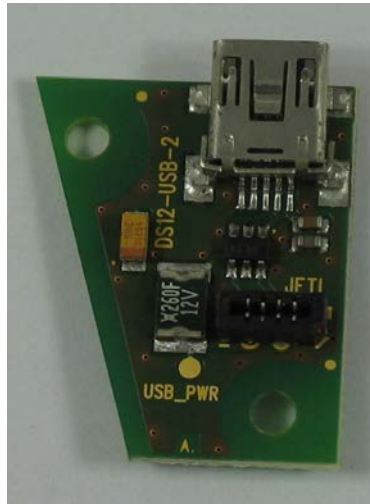


Figure 9 – DS12-USB-2 Borad back

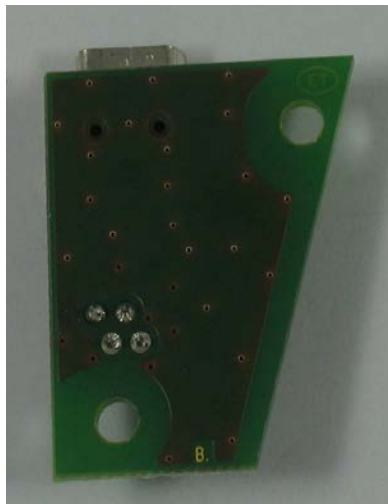


Figure 10– DS12-JACK-2 Borad front

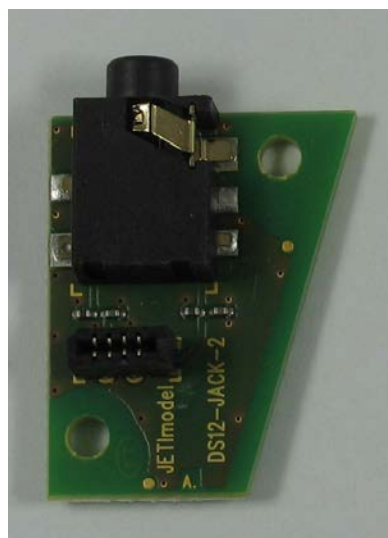


Figure 11– DS12-JACK-2 Borad rear

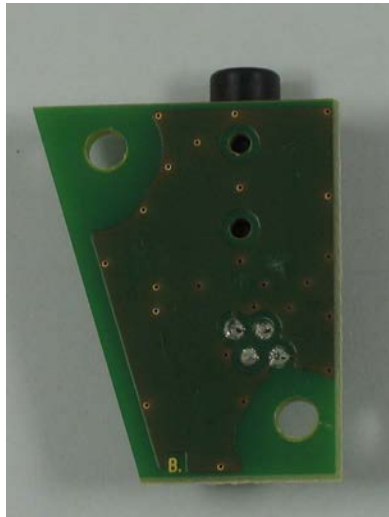


Figure 12 - DS-PW-E2 Board Front

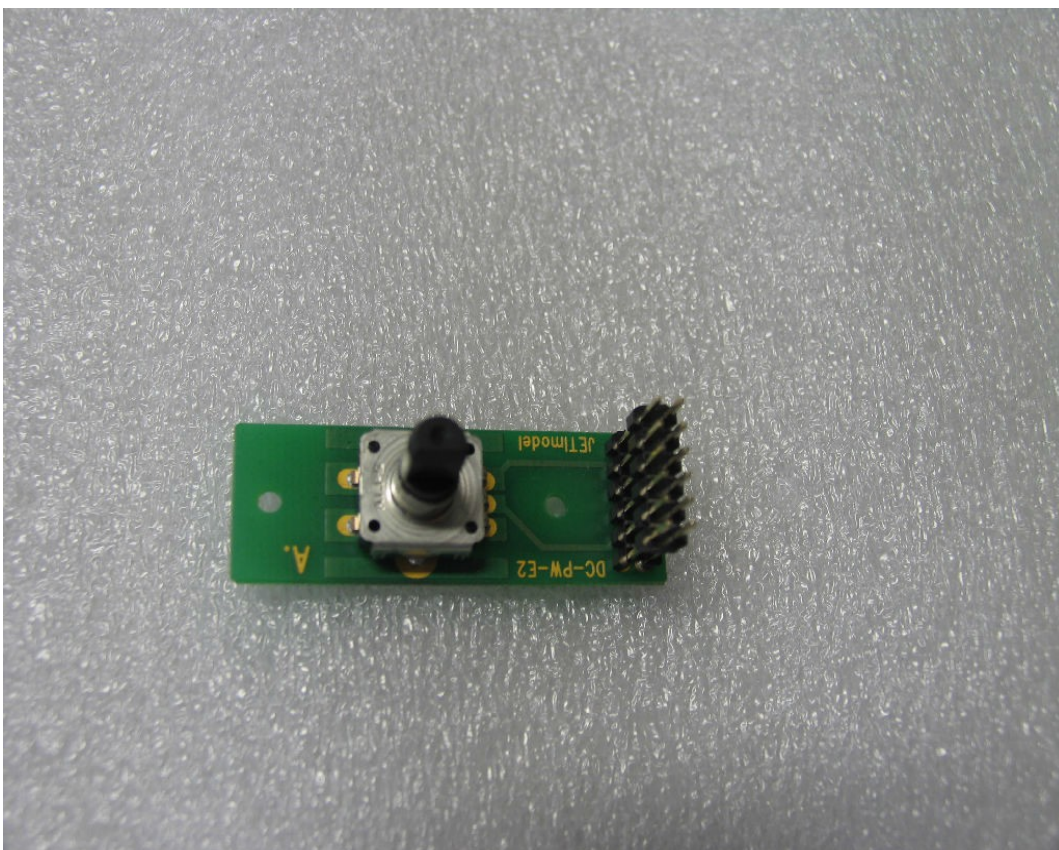




Figure 13 - DS-PW-E2 Board back



Figure 14 - DS-SWS-2 Board Front

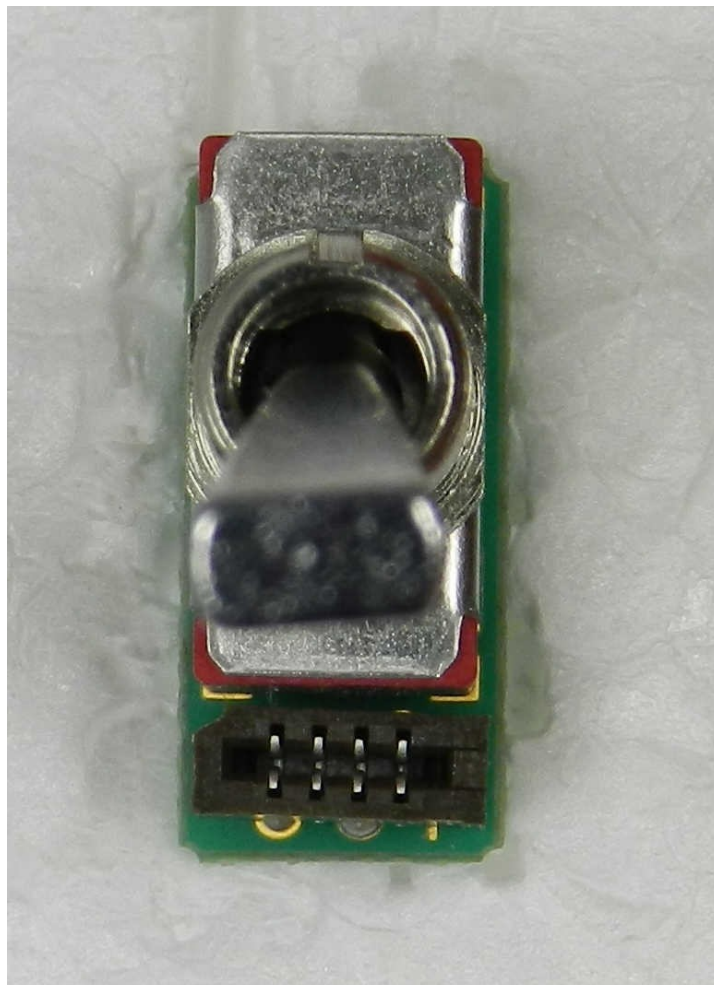


Figure 15 - DS-SWS-2 Board back



Figure 16 - XHALLPL-1 Board Front



Figure 17 - XHALLPL-1 Board back





Figure 18 - YHALLPL-1 Board front



Figure 19 - YHALLPL-1 Board back



Figure 20 - YHALLPL-2 Board front



Figure 21 - YHALLPL-2 Board back



Figure 22 - DC-SWP-1 Board front



Figure 23 - DC-SWP-1 Board back

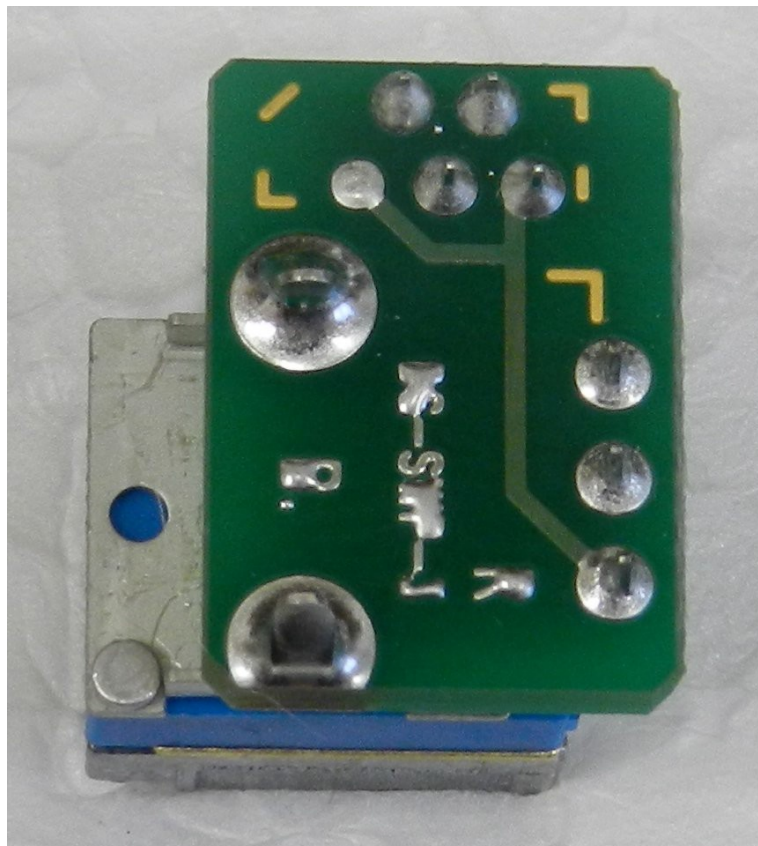




Figure 24- LCD front



Figure 25 - LCD back



Figure 26a – Antenna 2400MHz

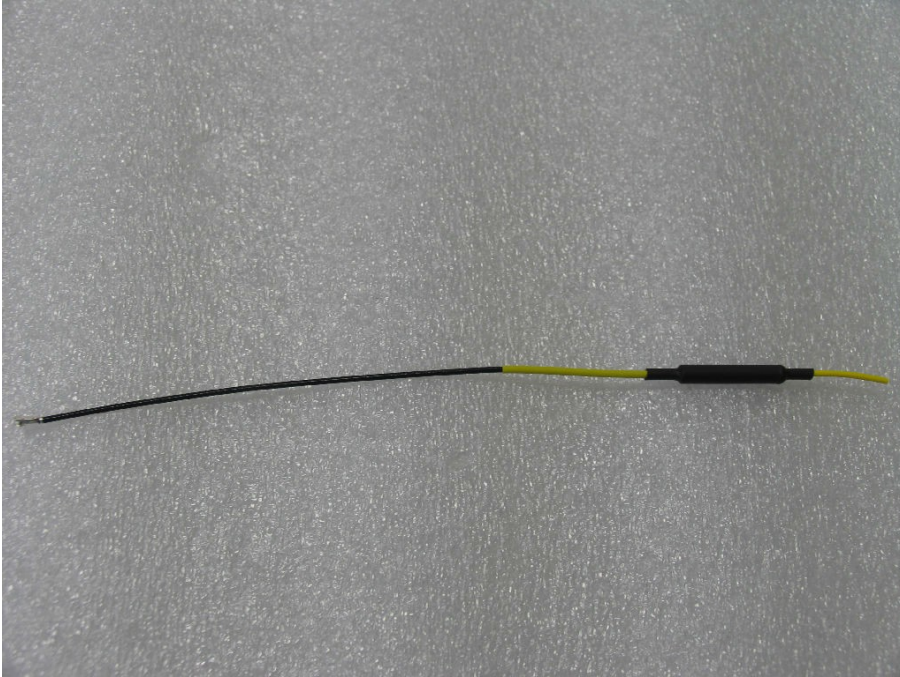


Figure 26b – Antenna 900MHz

