



Excellence in Compliance Testing

Certification Exhibit

**FCC ID: ONTJETIDC16US
IC: 10491A-JETIDC16US**

**FCC Rule Part: 15.247
IC Radio Standards Specification: RSS-210**

ACS Project: 12-2095

**Manufacturer: Esprit Model
Model: JETIDC16US**

Internal Photos



Figure 1: Internal View with back case removed



Figure 2: Antenna 1, Antenna 2

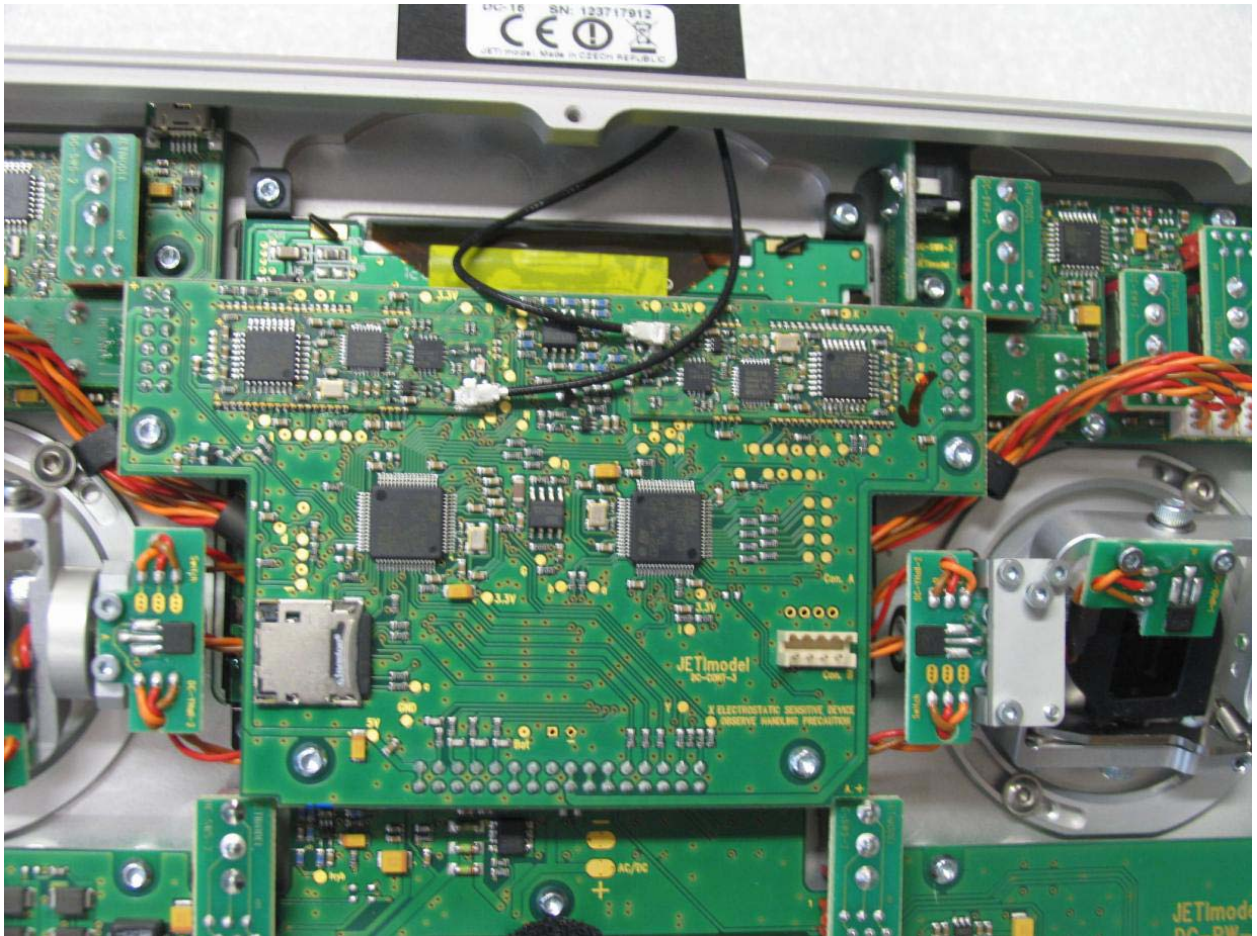


Figure 3: RF antenna view

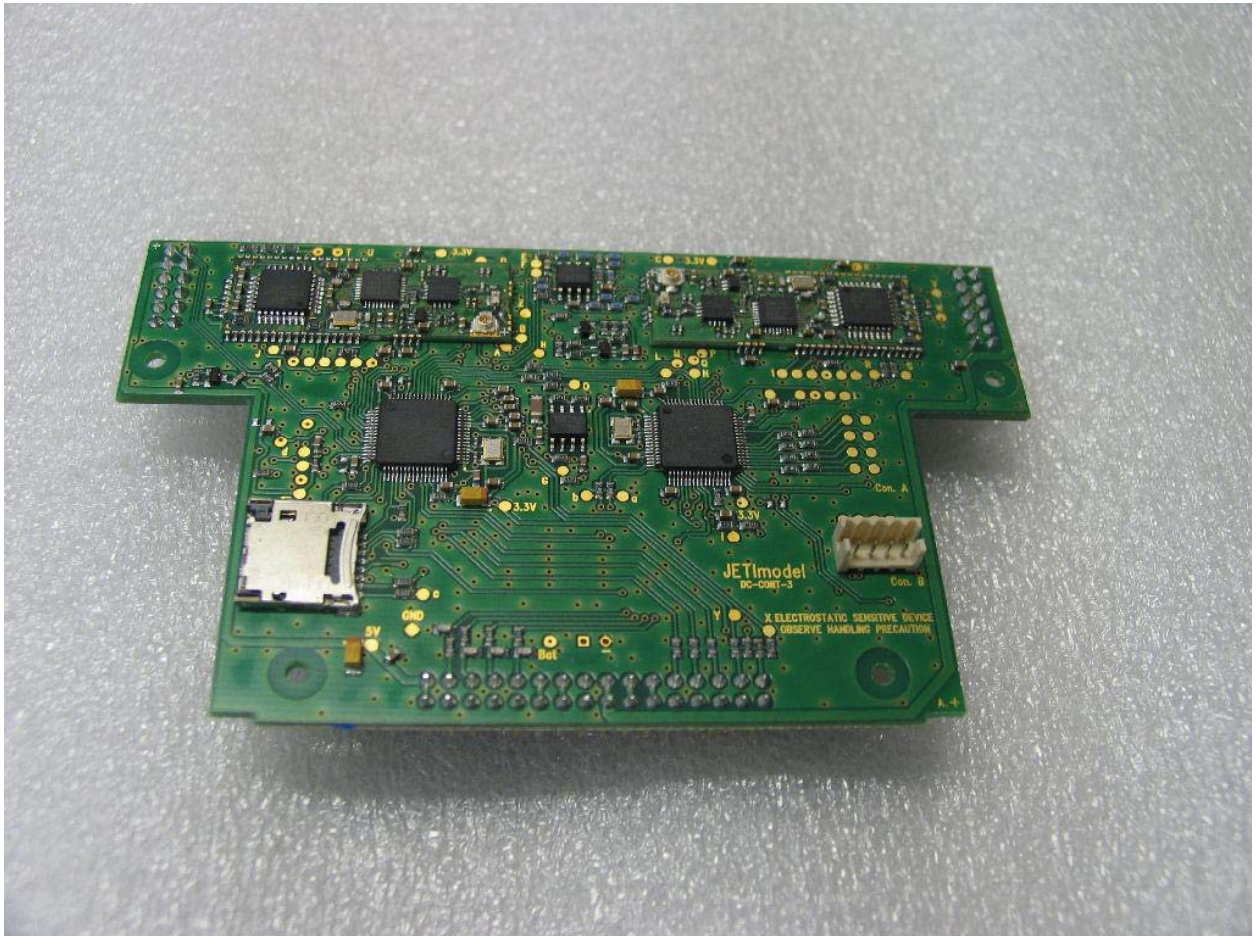


Figure 4: DC-Cont-4 Board Front



Figure 5: DC-CONT-4 Board back

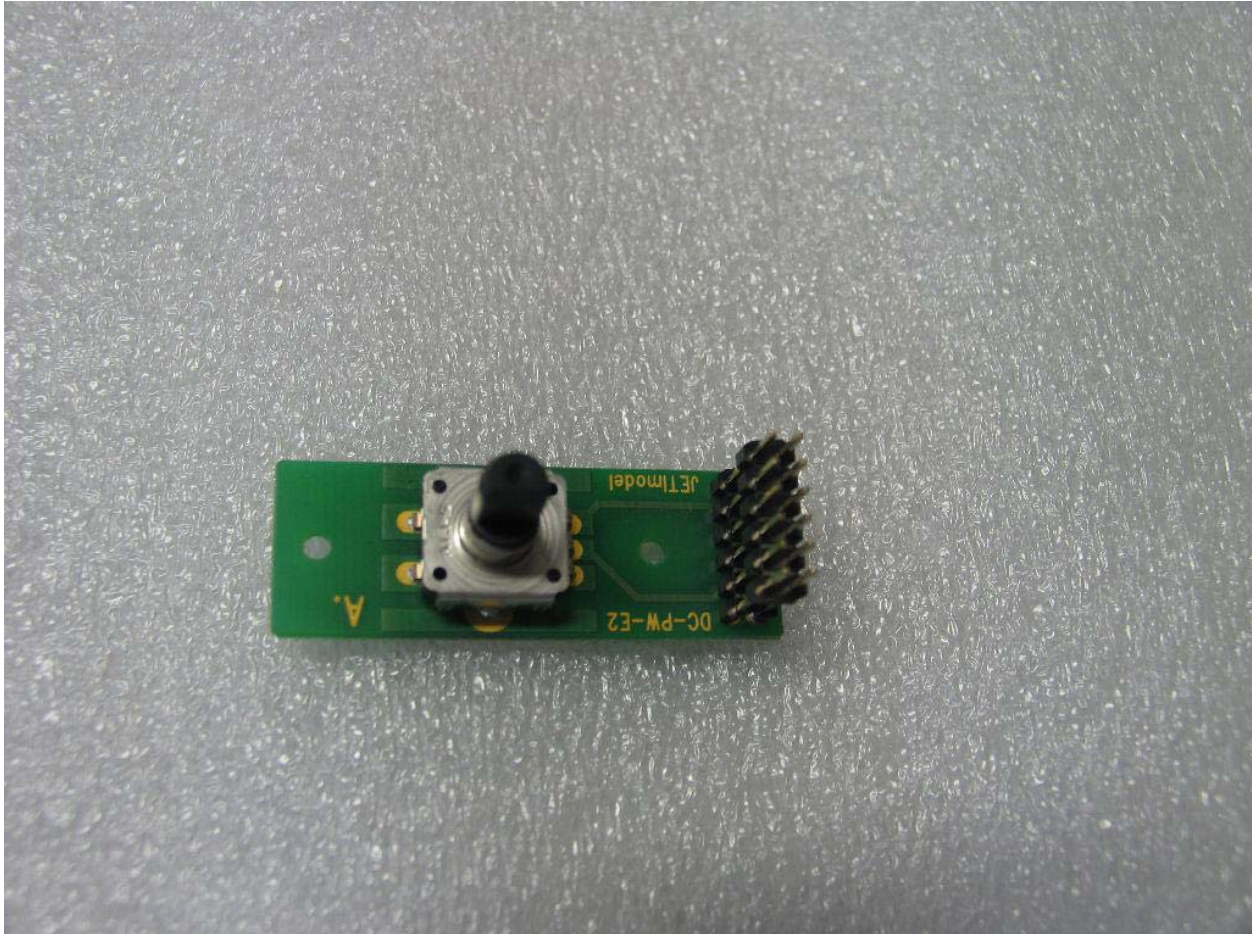


Figure 6: DC-PW-E2 Board Front

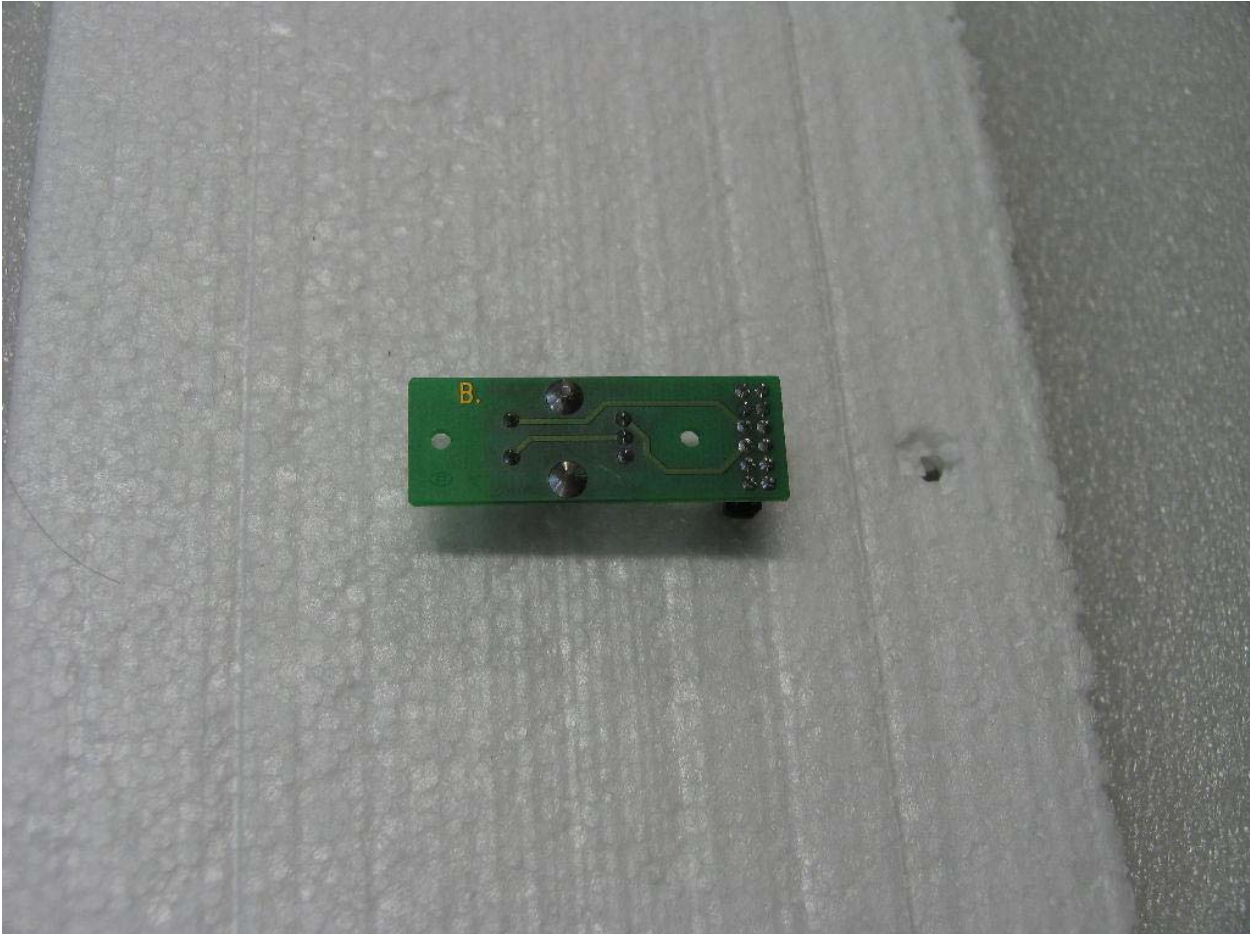


Figure 7: DC-PW-E2 Board back



Figure 8: DC-SWS-2 Board Front



Figure 9: DC-SWS-2 Board back

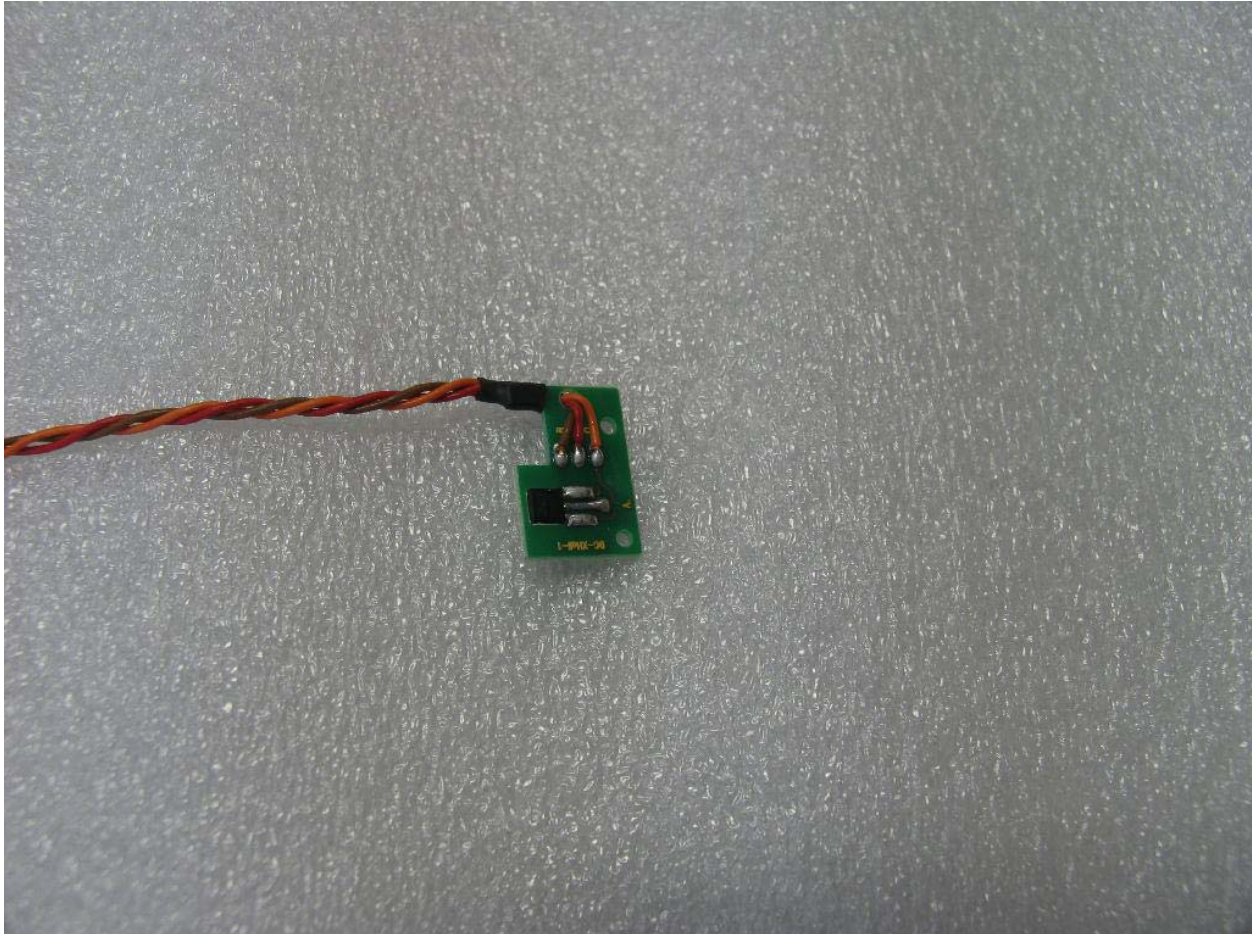


Figure 10: DC-XHall-1 Board Front

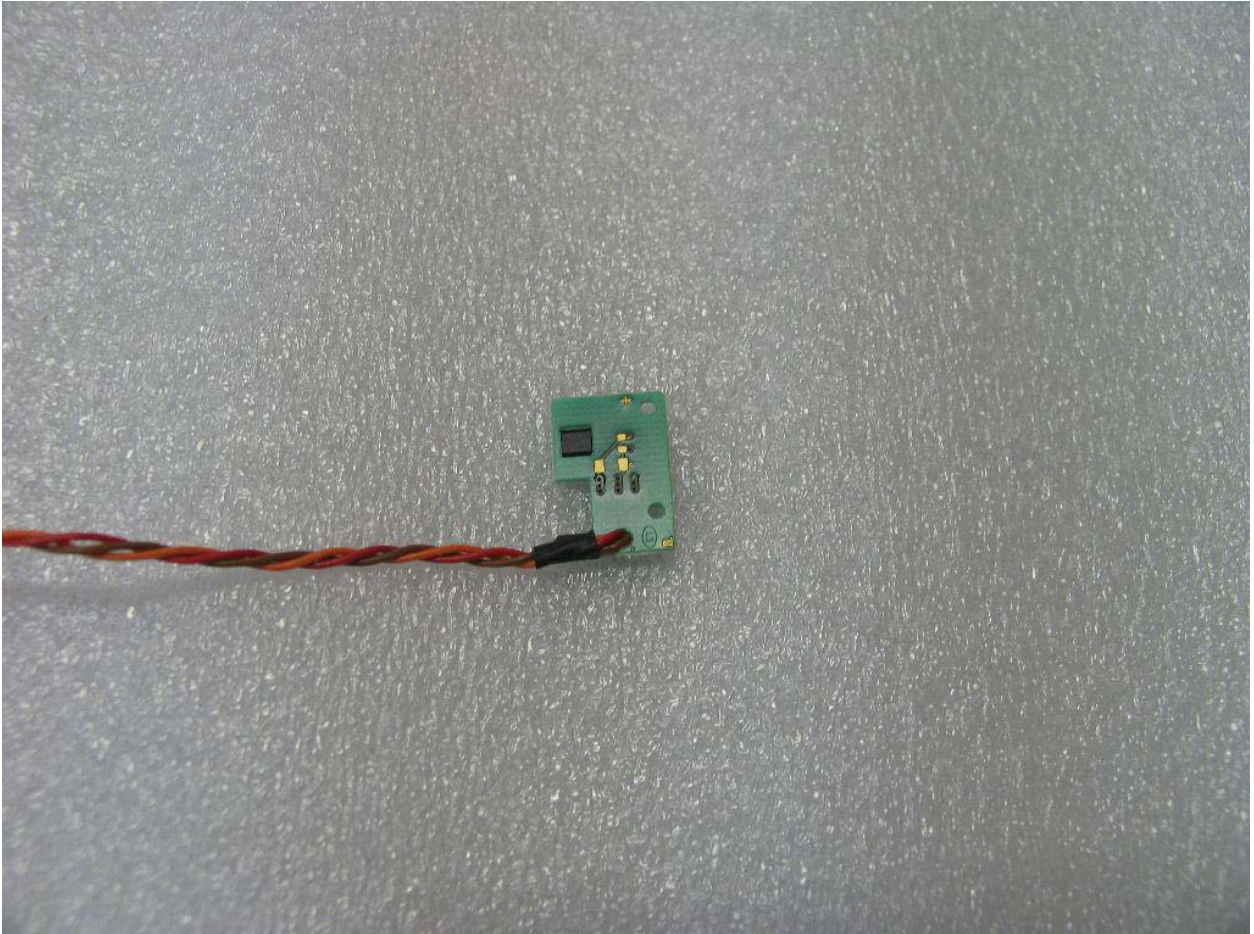


Figure 11: DC-XHall-1 Board back

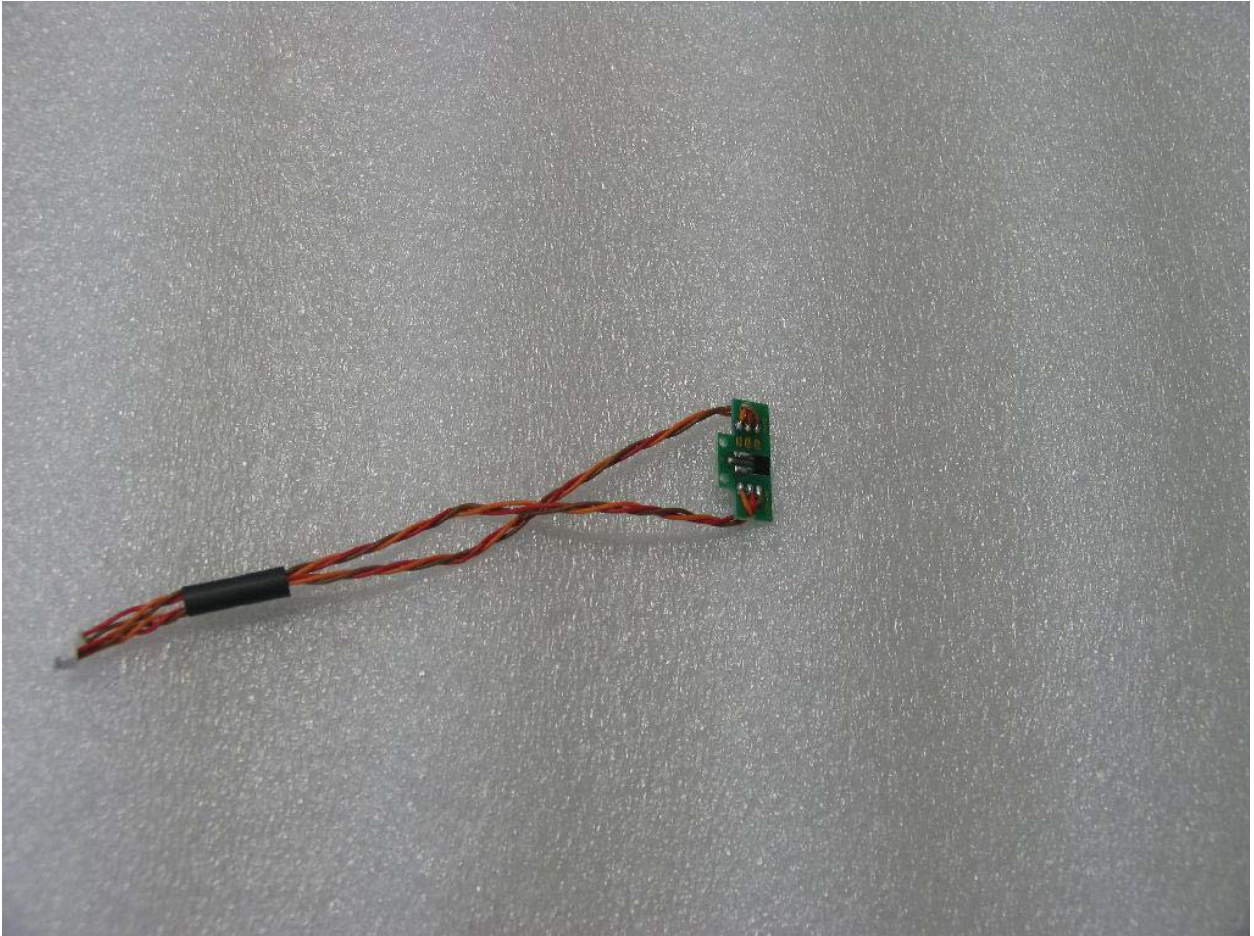


Figure 12: DC-YHall-2 Board front

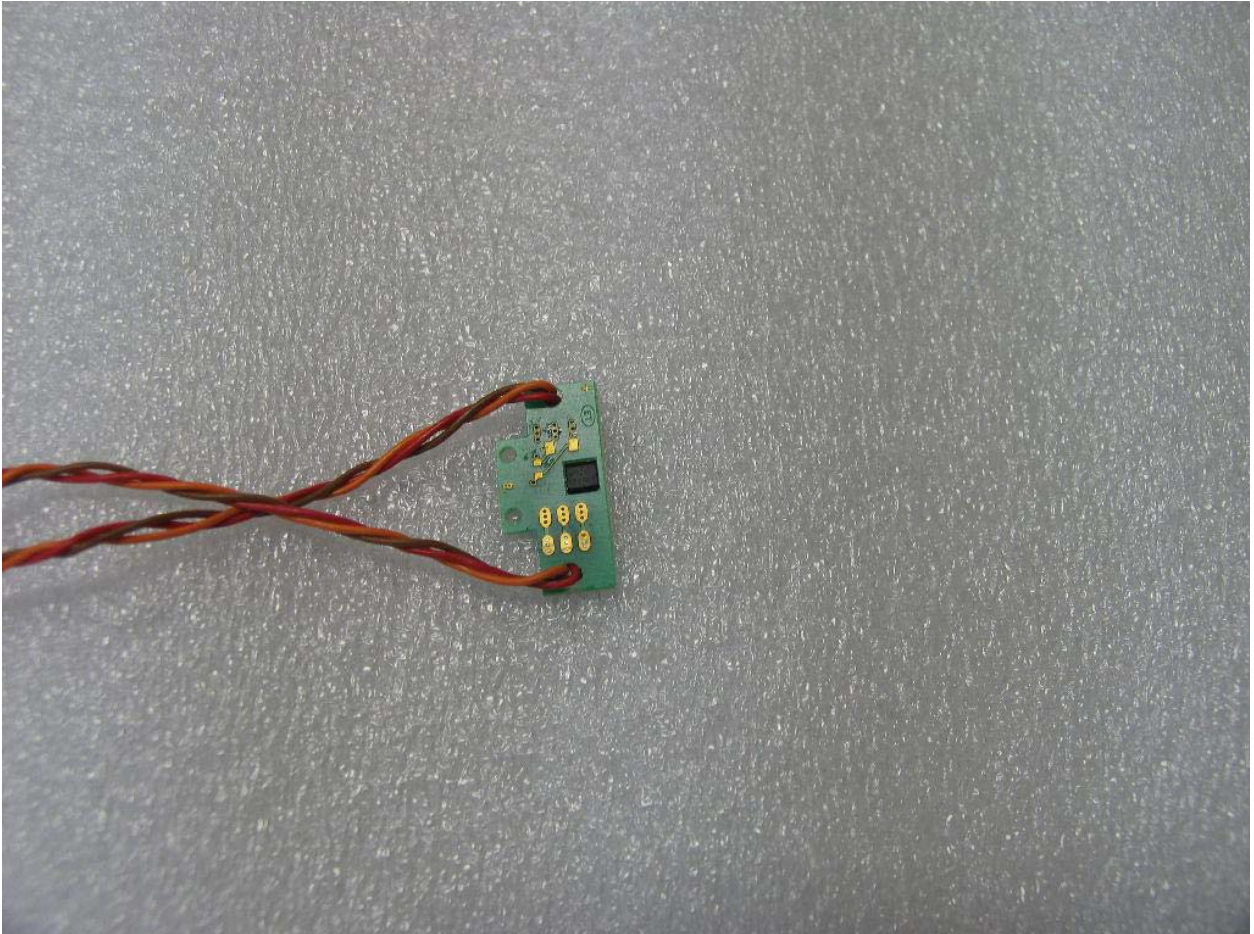


Figure 13: DC-YHall-2 Board back



Figure 14: DC-SWP-1 Board front

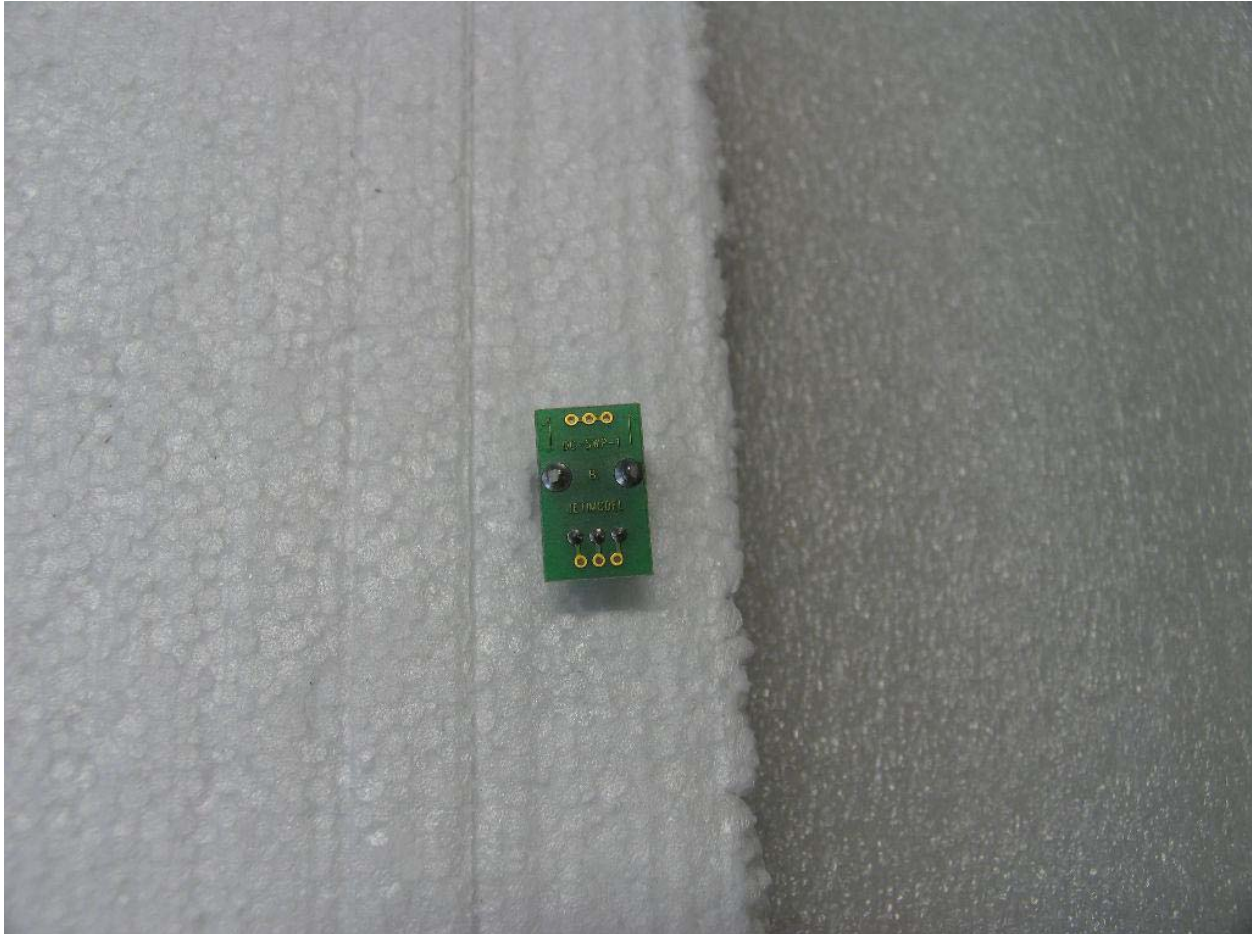


Figure 15: DC-SWP-1 Board back

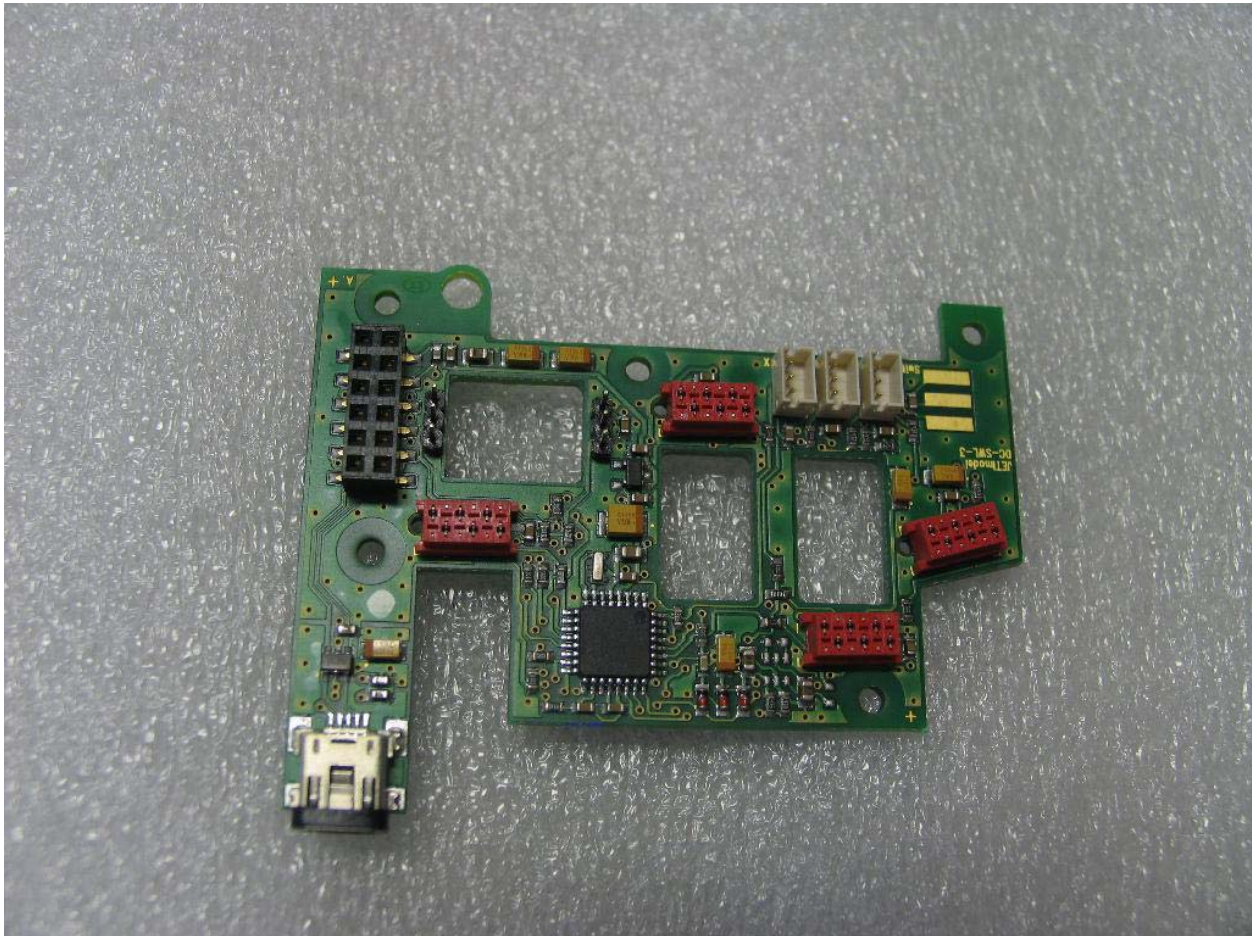


Figure 16: DC-SWL-3 Board front



Figure 17: DC-SWL-3 Board back

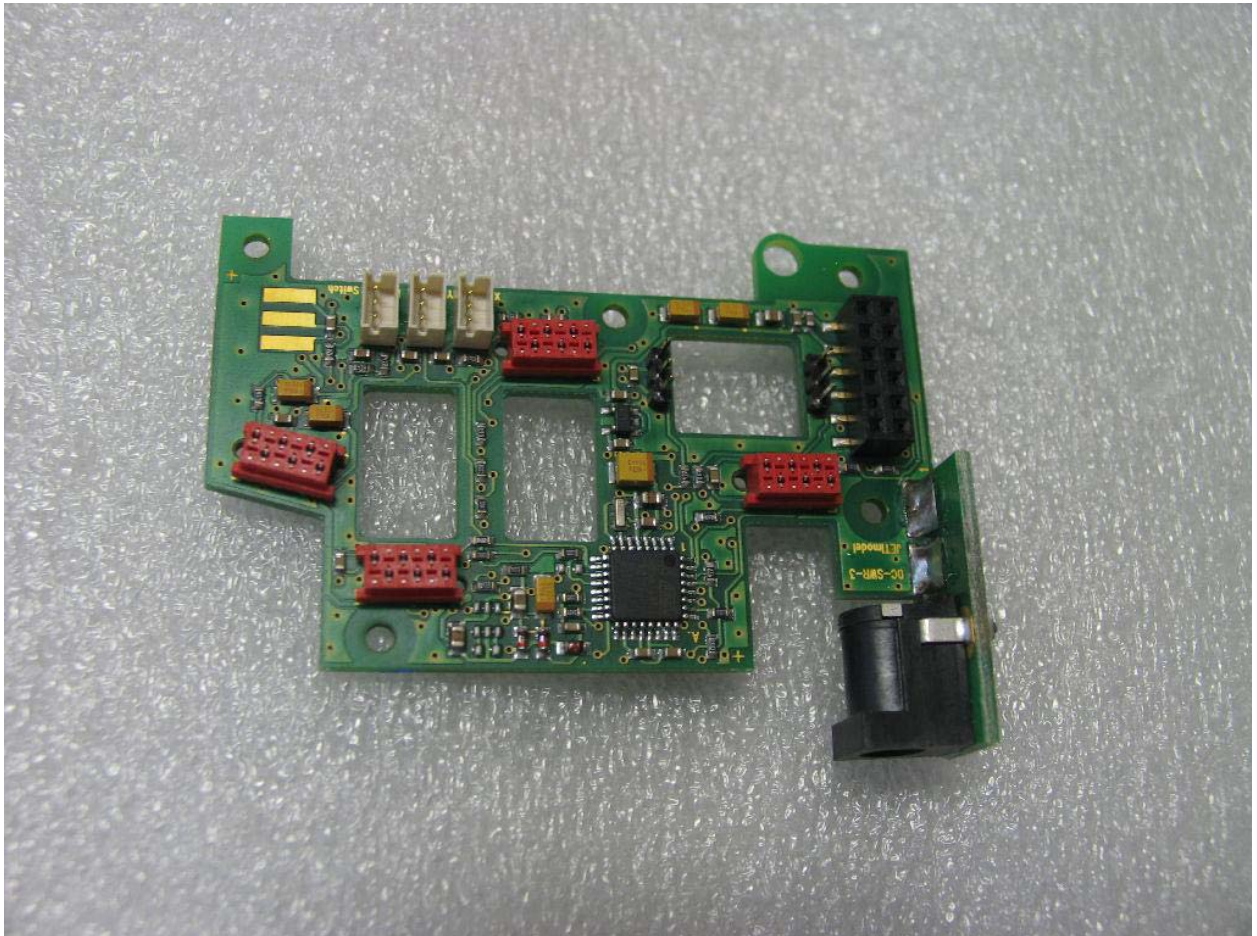


Figure 18: DC-SWR-3 Board front



Figure 19: DC-SWR-3 Board back



Figure 20: DC-RP-2 Board front

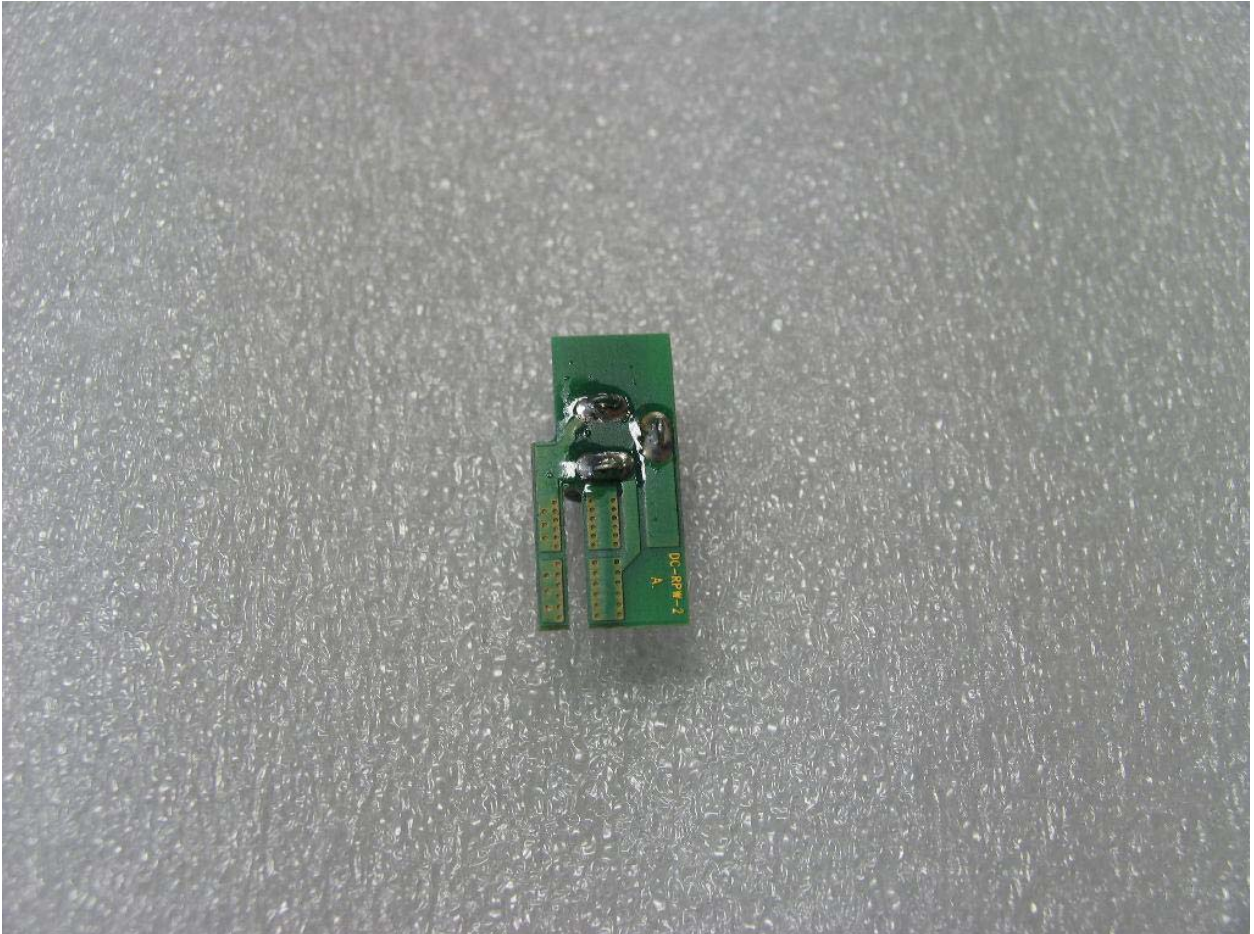


Figure 20: DC-RP-2 Board back

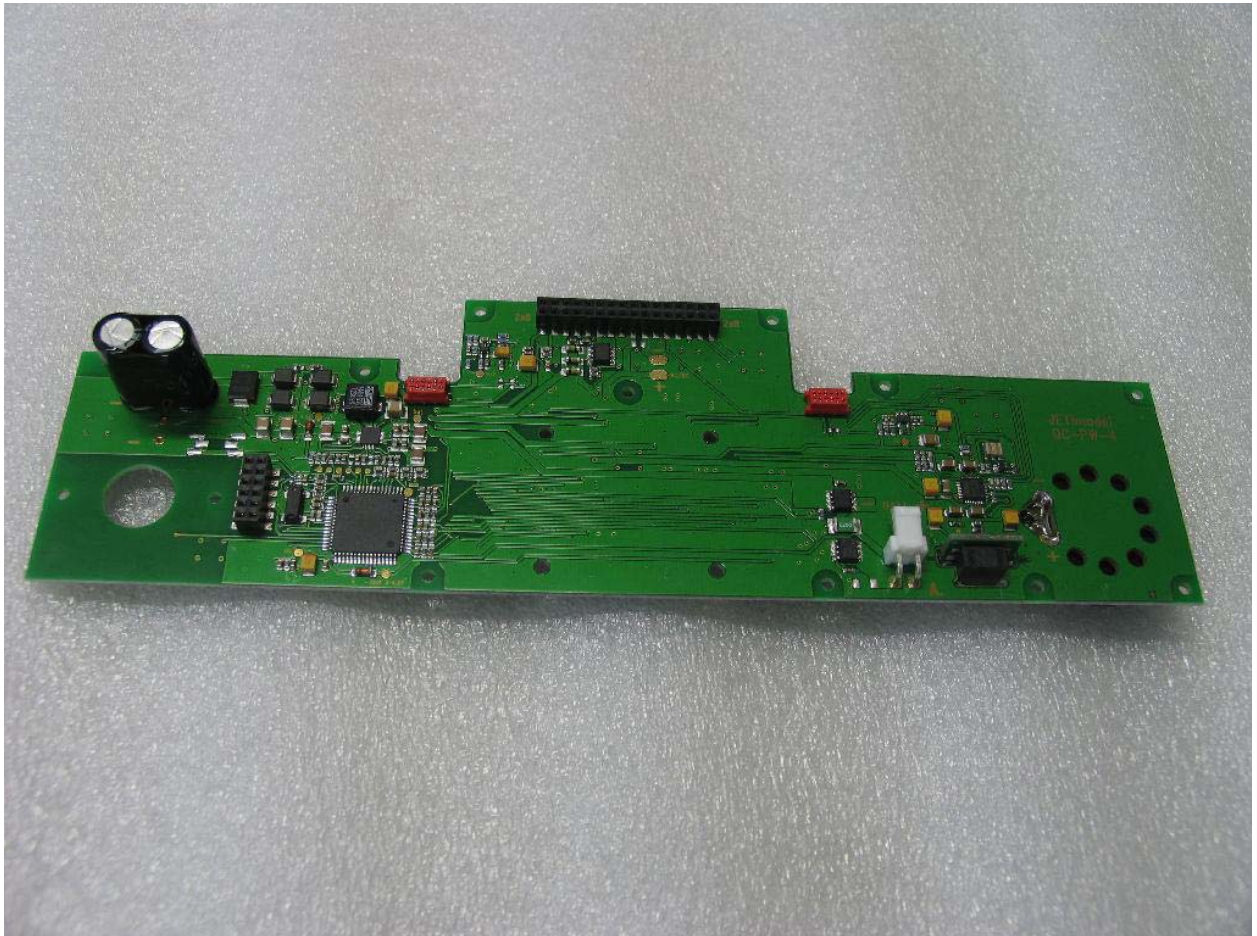


Figure 21: DC-PW-4 Board front

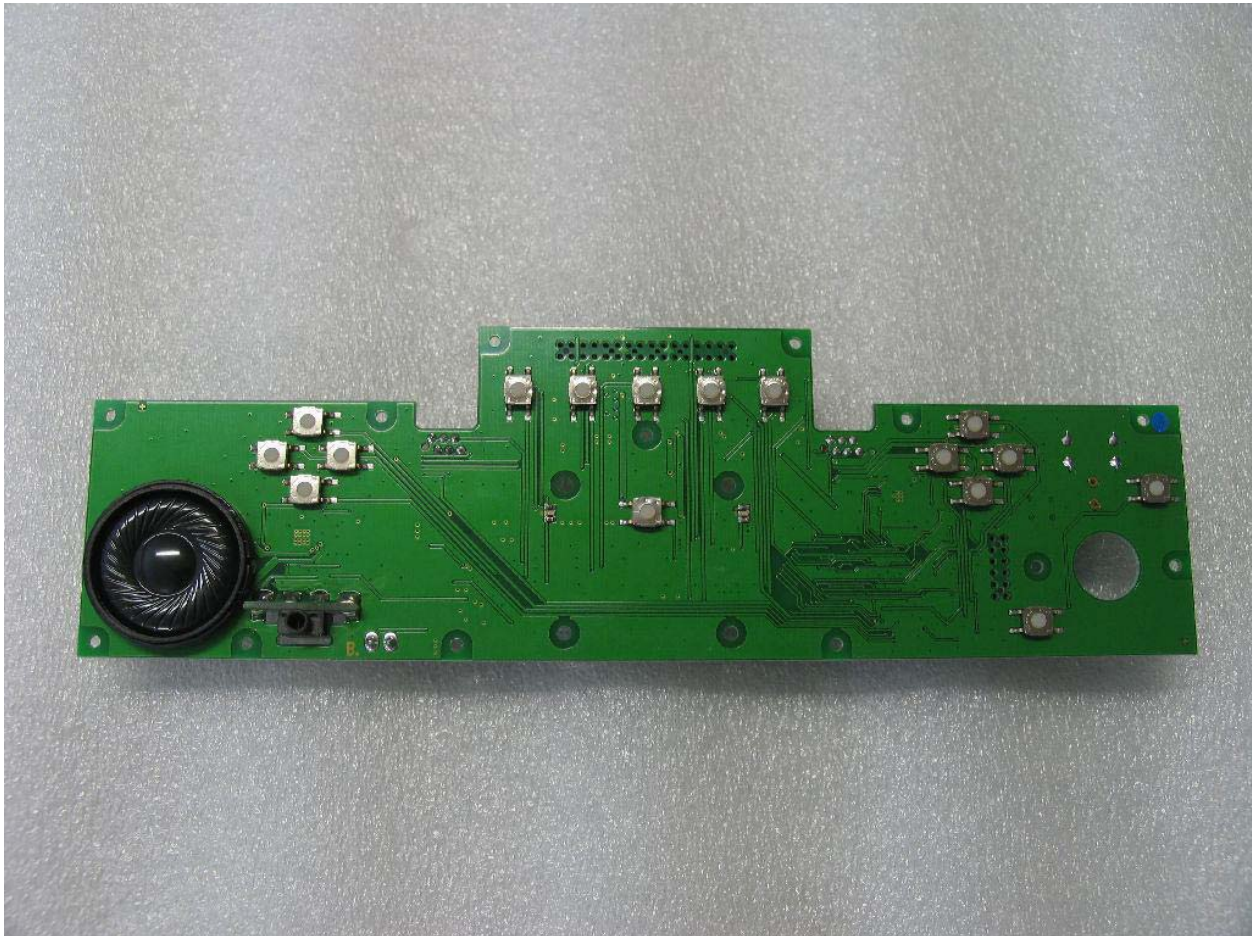


Figure 21: DC-PW-4 Board back

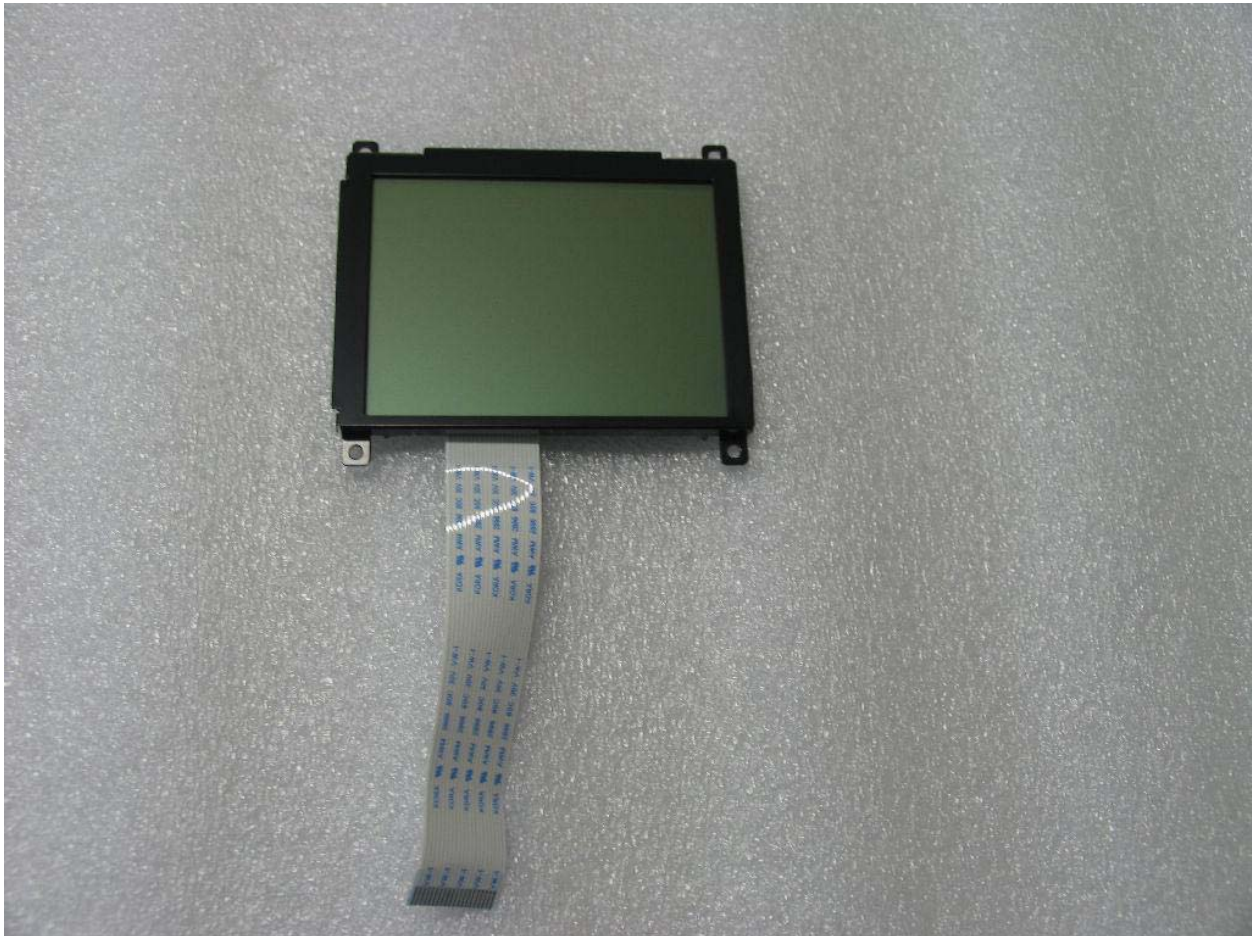


Figure 22: LCD Front



Figure 23: LCD Back



Figure 24: Antenna

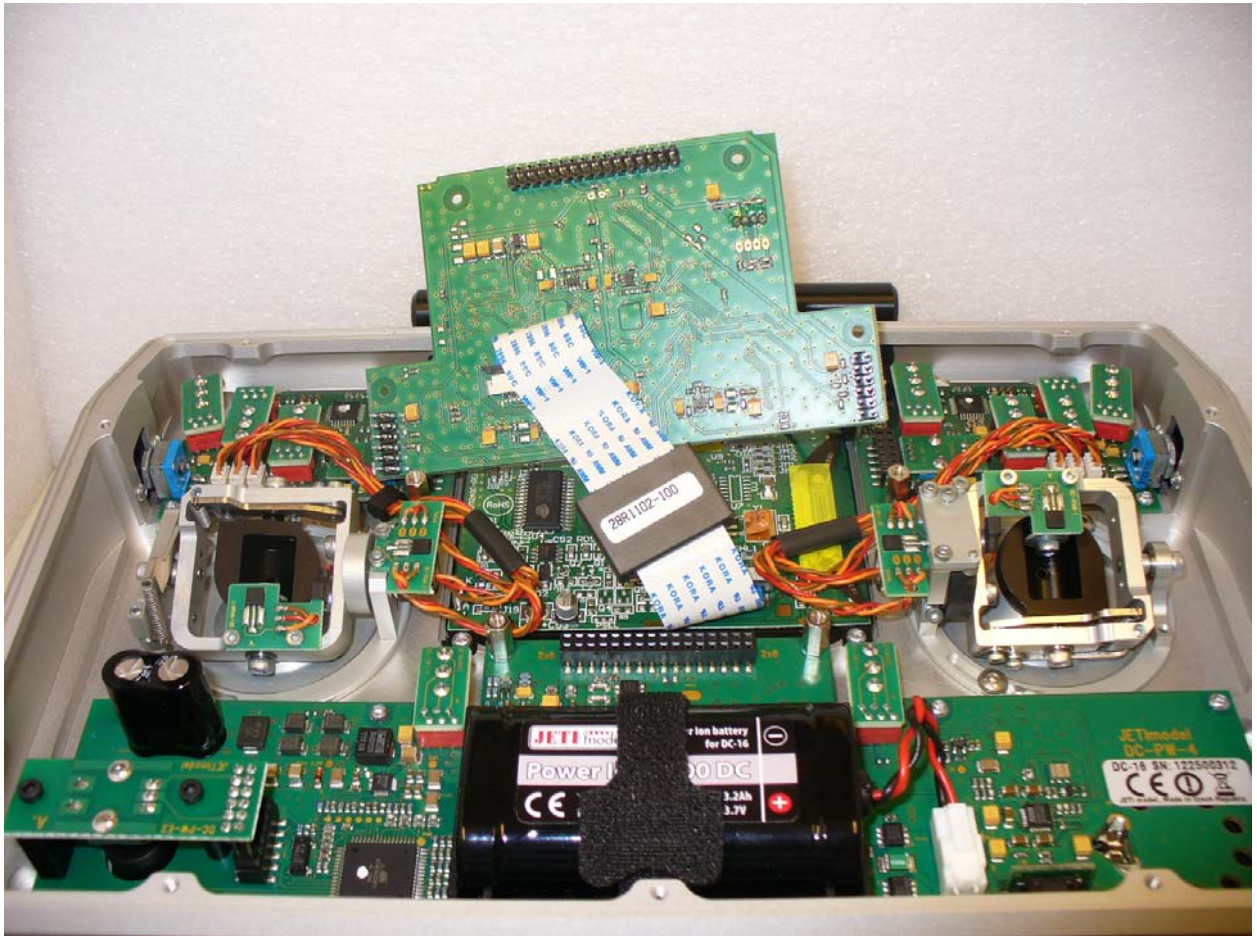


Figure 25: Internal View