



## SGS-CSTC Standards Technical Services Co., Ltd.

198 Kezhu Road, Sciencetech Park, Guangzhou Economic & Technological  
Development District, Guangzhou, China 510663  
Telephone: +86 (0) 20 82155555  
Fax: +86 (0) 20 82075059  
Email: ee.guangzhou@sgs.com

Report No.: GZEM120600230101

Page: 1 of 17

FCC ID: OMX13433895552

# TEST REPORT

Application No.:	GZEM1206002301RF
Applicant:	Hankey Toys
FCC ID:	OMX13433895552
Product Name:	R/C plane
Product Description:	Radio toys with 49.860 MHz as a carrier
Model No.:	501, 502, 503, 504, 505, 506, 507, 508, 509, 301, 303, 305, 701, 702, 703, 704, 705, 706, 707, 708, 709, 901, 902, 903, 904, 905, 906, 907, 908, 909 ♣
♣	Please refer to section 3 of this report which indicates which Model was actually tested and which were electrically identical.
Standards:	47 CFR PART 15 SUBPART C:2011 section 15.235 ANSI C63.10:2009
Date of Receipt:	2012-06-20
Date of Test:	2012-06-26 to 2012-07-05
Date of Issue:	2012-07-19
Test Result :	<b>PASS *</b>

\* In the configuration tested, the EUT detailed in this report complied with the standards specified above. Please refer to section 3 of this report for further details.

  
Strong Yao  
Manager

The manufacturer should ensure that all products in series production are in conformity with the product sample detailed in this report. If the product in this report is used in any configuration other than that detailed in the report, the manufacturer must ensure the new system complies with all relevant standards.

The report must not be used by the client to claim product certification, approval, or endorsement by NVLAP, NIST, or any agency of the federal government. All test results in this report can be traceable to National or International Standards.

This document is issued by the Company subject to its General Conditions of Service printed overleaf, available on request or accessible at [www.sgs.com/terms\\_and\\_conditions.htm](http://www.sgs.com/terms_and_conditions.htm) and, for electronic format documents, subject to Terms and Conditions for Electronic Documents at [www.sgs.com/terms\\_e-document.htm](http://www.sgs.com/terms_e-document.htm). Attention is drawn to the limitation of liability, indemnification and jurisdiction issues defined therein. Any holder of this document is advised that information contained hereon reflects the Company's findings at the time of its intervention only and within the limits of Client's instructions, if any. The Company's sole responsibility is to its Client and this document does not exonerate parties to a transaction from exercising all their rights and obligations under the transaction documents. This document cannot be reproduced except in full, without prior written approval of the Company. Any unauthorized alteration, forgery or falsification of the content or appearance of this document is unlawful and offenders may be prosecuted to the fullest extent of the law. Unless otherwise stated the results shown in this test report refer only to the sample(s) tested and such sample(s) are retained for 90 days only.



## 2 Version

Revision Record				
Version	Chapter	Date	Modifier	Remark
00		2012-07-19		Original

Authorized for issue by:				
Tested By		 (Storm Shu)/Project Engineer		2012-06-26 to 2012-07-05 Date
Prepared By		 (Millie Li) /Clerk		2012-07-13 Date
Checked By		 (Strong Yao)/Reviewer		2012-07-19 Date



### 3 Test Summary

Test	Test Requirement	Test method	Result
Radiated Emission	FCC PART 15 C section 15.235	ANSI C 63.10: Clasue 6.4, 6.5 and 6.6	PASS **
Occupied Bandwidth	FCC PART 15 C section 15.235	ANSI C 63.10: Clasue 6.9	PASS
Label Requirement	FCC PART 15 C section 15.19	N/A	N/A

**Remark:**

N/A: not applicable. Refer to the relative section for the details.

Tx: In this whole report Tx (or tx) means Transmitter.

Rx: In this whole report Rx (or rx) means Receiver.

RF: In this whole report RF means Radio Frequency.

\*\* The EUT passed Radiated Emission after retest.

♣ Model No.: 501, 502, 503, 504, **505**, 506, 507, 508, 509, 301, 303, 305, 701, 702, 703, 704, 705, 706, 707, 708, 709, 901, 902, 903, 904, 905, 906, 907, 908, 909

According to the declaration from the applicant, the electrical circuit design, layout, components used and internal wiring were identical for all models, with only difference being the Model No. and appearance.

Therefore only one model **505** was tested in this report.



## 4 Contents

1	COVER PAGE .....	1
2	VERSION .....	2
3	TEST SUMMARY .....	3
4	CONTENTS .....	4
5	GENERAL INFORMATION.....	5
5.1	CLIENT INFORMATION.....	5
5.2	GENERAL DESCRIPTION OF E.U.T.....	5
5.3	DETAILS OF E.U.T. ....	5
5.4	DESCRIPTION OF SUPPORT UNITS.....	5
5.5	DEVIATION FROM STANDARDS .....	5
5.6	ABNORMALITIES FROM STANDARD CONDITIONS .....	5
5.7	OTHER INFORMATION REQUESTED BY THE CUSTOMER.....	5
5.8	TEST LOCATION .....	5
5.9	TEST FACILITY .....	6
6	EQUIPMENT USED DURING TEST.....	7
7	TEST RESULTS .....	8
7.1	E.U.T. TEST CONDITIONS .....	8
7.2	ANTENNA REQUIREMENT .....	9
7.3	RADIATED EMISSIONS.....	10
7.4	OCCUPIED BANDWIDTH.....	15
7.5	LABEL REQUIREMENT .....	17

## **5 General Information**

### **5.1 Client Information**

Applicant: Hankey Toys  
Address of Applicant: Guanshan Industrial Park Chenghai District Shantou City, Guangdong Province China

### **5.2 General Description of E.U.T.**

Product Name: R/C plane  
Model No.: 505

### **5.3 Details of E.U.T.**

Modulation and Antenna Type: The Tx is a ASK modulation by internal signal with a dedicated antenna.  
Power Supply: DC 9V (6 x 1.5V size 'AA' batteries)  
Power cord: N/A

### **5.4 Description of Support Units**

The EUT has been tested as an independent unit.

### **5.5 Deviation from Standards**

None.

### **5.6 Abnormalities from Standard Conditions**

The EUT passed Radiated Emission after retest.

### **5.7 Other Information Requested by the Customer**

None.

### **5.8 Test Location**

All tests were performed at:  
SGS-CSTC Standards Technical Services Co., Ltd., Guangzhou EMC Laboratory,  
198 Kezhu Road, Sciencetech Park, Guangzhou Economic & Technology Development District,  
Guangzhou, China 510663  
Tel: +86 20 82155555 Fax: +86 20 82075059  
No tests were sub-contracted.



## **5.9 Test Facility**

The test facility is recognized, certified, or accredited by the following organizations:

- **NVLAP (Lab Code: 200611-0)**

SGS-CSTC Standards Technical Services Co., Ltd., Guangzhou EMC Laboratory is recognized under the National Voluntary Laboratory Accreditation Program (NVLAP/NIST). NVLAP Code: 200611-0.

- **ACMA**

SGS-CSTC Standards Technical Services Co., Ltd., EMC Laboratory can also perform testing for the Australian C-Tick mark as a result of our NVLAP accreditation.

- **SGS UK(Certificate No.: 32), SGS-TUV SAARLAND and SGS-FIMKO**

Have approved SGS-CSTC Standards Technical Services Co., Ltd., EMC Laboratory as a supplier of EMC TESTING SERVICES and SAFETY TESTING SERVICES.

- **CNAS (Lab Code: L0167)**

SGS-CSTC Standards Technical Services Co., Ltd., EMC Laboratory has been assessed and in compliance with CNAS-CL01:2006 accreditation criteria for testing laboratories (identical to ISO/IEC 17025:2005 General Requirements) for the Competence of Testing Laboratories.

- **FCC (Registration No.: 282399)**

SGS-CSTC Standards Technical Services Co., Ltd., EMC Laboratory has been registered and fully described in a report filed with the (FCC) Federal Communications Commission. The acceptance letter from the FCC is maintained in our files. Registration 282399, May 31, 2002.

- **Industry Canada (Registration No.: 4620B-1)**

The 3m/10m Alternate Semi-anechoic chamber of SGS-CSTC Standards Technical Services Co., Ltd. has been registered by Certification and Engineering of Industry Canada for radio equipment testing with Registration No. 4620B-1.

- **VCCI (Registration No.: R-2460, C-2584, G-449 and T-1179)**

The 10m Semi-anechoic chamber and Shielded Room of SGS-CSTC Standards Technical Services Co., Ltd. have been registered in accordance with the Regulations for Voluntary Control Measures with Registration No.: R-2460, C-2584, G-449 and T-1179 respectively.

- **CBTL (Lab Code: TL129)**

SGS-CSTC Standards Technical Services Co., Ltd., E&E Laboratory has been assessed and fully comply with the requirements of ISO/IEC 17025:2005, the Basic Rules, IEC 61010-1:2006-10 and Rule of procedure IEC 61010-2:2006-10, and the relevant IEC CB-Scheme Operational documents.



## 6 Equipment Used during Test

RE in Chamber						
No.	Test Equipment	Manufacturer	Model No.	Serial No.	Cal.Due date	Calibration Interval
					(YYYY-MM-DD)	
EMC0525	Compact Semi-Anechoic Chamber	ChangZhou ZhongYu	N/A	N/A	2012-09-06	2Y
EMC0522	EMI Test Receiver	Rohde & Schwarz	ESIB26	100283	2012-11-11	1Y
EMC0056	EMI Test Receiver	Rohde & Schwarz	ESCI	10036	2013-03-12	1Y
EMC0528	RI High frequency Cable	SGS	20 m	N/A	2013-06-01	1Y
EMC2025	Trilog Broadband Antenna 30-3000MHz	SCHWARZBECK MESS-ELEKTRONIK	VULB 9163	9163-450	2012-10-20	1Y
EMC0524	Bi-log Type Antenna	Schaffner -Chase	CBL6112B	2966	2012-11-28	1Y
EMC0519	Bilog Type Antenna	Schaffner -Chase	CBL6143	5070	2012-11-28	1Y
EMC2026	Horn Antenna 1-18GHz	R&S	BBHA 9120D	9120D-841	2012-10-20	1Y
EMC0518	Horn Antenna	Rohde & Schwarz	HF906	100096	2012-08-29	1Y
EMC0521	1-26.5 GHz Pre-Amplifier	Agilent	8449B	3008A01649	2012-08-29	1Y
EMC0049	Amplifier	Agilent	8447D	2944A10862	2013-03-12	1Y
EMC0075	310N Amplifier	Sonoma	310N	272683	2012-08-29	1Y
EMC0523	Active Loop Antenna	EMCO	6502	42963	2012-11-17	1Y
EMC2041	Broad-Band Horn Antenna (14)15-26.5(40)GHz	SCHWARZBECK MESS-ELEKTRONIK	BBHA 9170	9170-375	2014-06-01	3Y
EMC0530	10m Semi-Anechoic Chamber	ETS	N/A	N/A	2014-04-27	2Y

General used equipment						
No.	Test Equipment	Manufacturer	Model No.	Serial No.	Cal.Due date	Calibration Interval
					(YYYY-MM-DD)	
EMC0006	DMM	Fluke	73	70681569	2012-11-14	1Y
EMC0007	DMM	Fluke	73	70671122	2012-11-14	1Y

## 7 Test Results

### 7.1 E.U.T. test conditions

Test Voltage: DC 9 V (new battery)

Requirements: **15.31(e)**: For intentional radiators, measurements of the variation of the input power or the radiated signal level of the fundamental frequency component of the emission, as appropriate, shall be performed with the supply voltage varied between 85% and 115% of the nominal rated supply voltage. For battery operated equipment, the equipment tests shall be performed using a new battery.

Operating Environment:

Temperature: 22-25.0 °C

Humidity: 48-55% RH

Atmospheric Pressure: 1001-1010 mbar

Test frequencies and frequency range:

According to the 15.31(m) Measurements on intentional radiators or receivers, other than TV broadcast receivers, shall be performed and, if required, reported for each band in which the device can be operated with the device operating at the number of frequencies in each band specified in the following table:

According to the 15.33 (a) For an intentional radiator, the spectrum shall be investigated from the lowest radio frequency signal generated in the device, without going below 9 kHz, up to at least the frequency shown in the following table:

**Number of fundamental frequencies to be tested in EUT transmit band**

Frequency range in which device operates	Number of frequencies	Location in frequency range of operation
1 MHz or less	1	Middle
1 MHz to 10 MHz	2	1 near top and 1 near bottom
More than 10 MHz	3	1 near top, 1 near middle and 1 near bottom

**Frequency range of radiated emission measurements**

Lowest frequency generated in the device	Upper frequency range of measurement
9 kHz to below 10 GHz	10th harmonic of highest fundamental frequency or to 40 GHz, whichever is lower
At or above 10 GHz to below 30 GHz	5th harmonic of highest fundamental frequency or to 100 GHz, whichever is lower
At or above 30 GHz	5th harmonic of highest fundamental frequency or to 200 GHz, whichever is lower, unless otherwise specified

Remark: Test frequency is 49.860 MHz.



## 7.2 Antenna Requirement

### Standard requirement

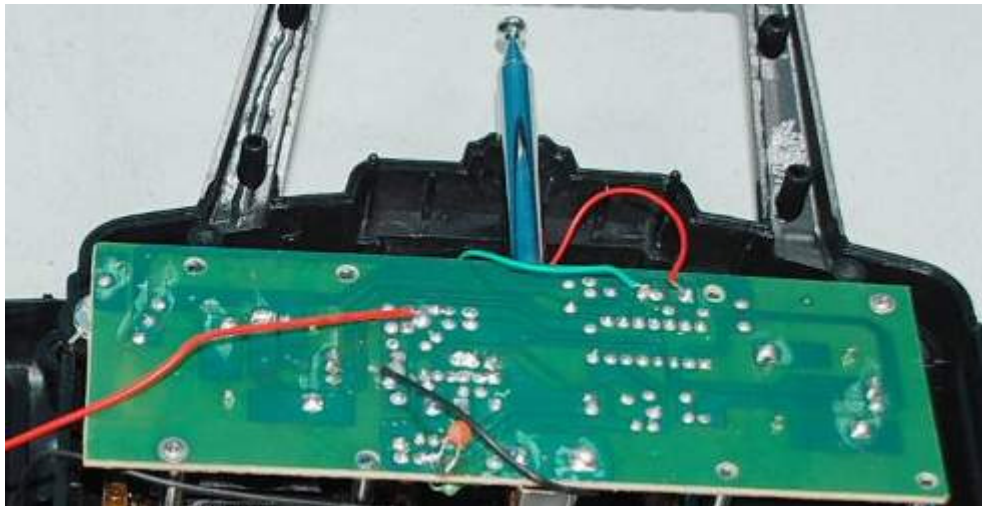
15.203 requirement:

For intentional device. According to 15.203, an intentional radiator shall be designed to

Ensure that no antenna other than that furnished by the responsible party shall be used with the device.

### EUT Antenna

The antenna is a whip dedicated antenna and no consideration of replacement. The best case gain of the antenna is 0 dBi.



**Test result: The unit does meet the FCC requirements.**

### 7.3 Radiated Emissions

**Test Requirement:** FCC Part 15 C section 15.235

**Test Method:** ANSI C63.10: Clause 6.4, 6.5.

**Measurement Distance:** 3 m (Semi-Anechoic Chamber)

**Test Status:** Test in transmitting mode.

**Requirements:**

the field strength of emissions from intentional radiators operated under this Section shall not exceed the following:

**15.235(a)** :The field strength of any emission within this band shall not exceed 10,000 microvolts/meter at 3 meters. The emission limit in this paragraph is based on measurement instrumentation employing an average detector. The provisions in Section 15.35 for limiting peak emissions apply.

**15.235(b)** : The field strength of any emissions appearing between the band edges and up to 10 kHz above and below the band edges shall be attenuated at least 26 dB below the level of the unmodulated carrier or to the general limits in Section 15.209, whichever permits the higher emission levels. The field strength of any emissions removed by more than 10 kHz from the band edges shall not exceed the general radiated emission limits in Section 15.209. All signals exceeding 20 microvolts/meter at 3 meters shall be reported in the application for certification

Out of band emissions shall not exceed:

Frequency range(MHz)	Quasi-peak limits dB (μV/m)
30 to 88	40
88 to 216	43.5
216 to 960	46
Above 960	54

At transitional frequencies the lower limit applies.

**Test Procedure:**

1) 9 kHz to 30 MHz emissions:

For testing performed with the loop antenna. The center of the loop was positioned 1 m above the ground and positioned with its plane vertical at the specified distance from the EUT. During testing the loop was rotated about its vertical axis for maximum response at each azimuth and also investigated with the loop positioned in the horizontal plane.

2) 30 MHz to 1 GHz emissions:

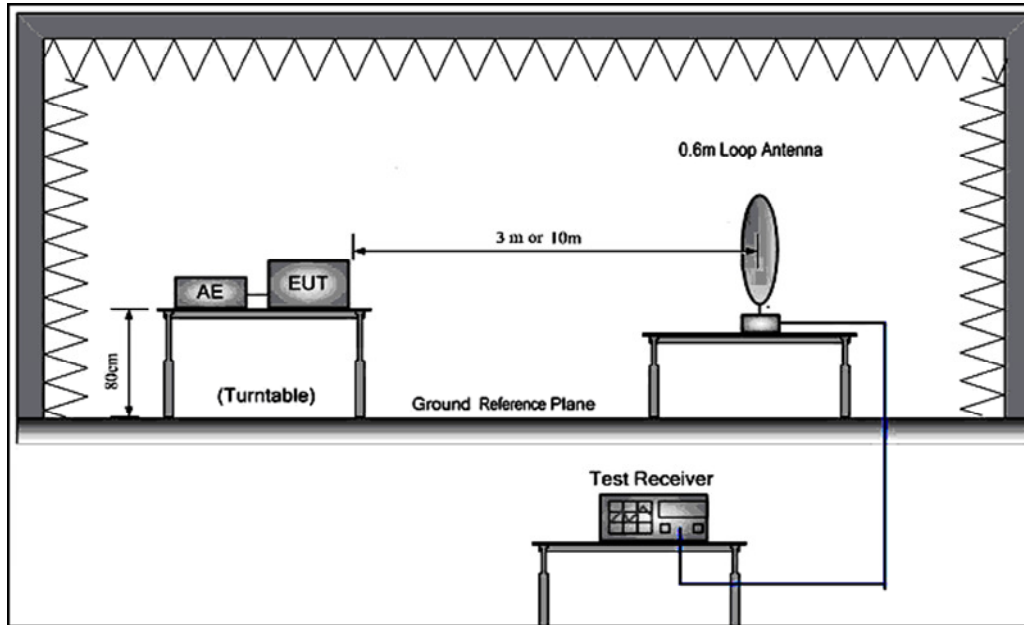
For testing performed with the bi-log type antenna. The measurement is performed with the EUT rotated 360°, the antenna height scanned between 1m and 4m, and the antenna rotated to repeat the measurement for both the horizontal and vertical antenna polarizations.

**Detector:**

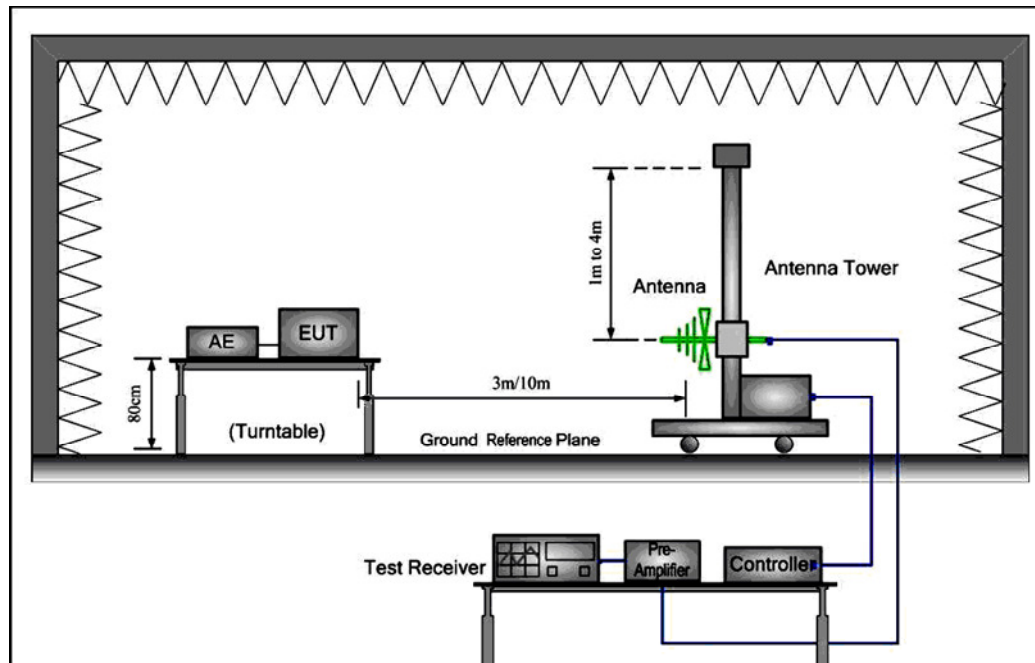
Test Receiver test setup	Detector	
	Peak	Average
RBW	120 kHz for $f < 1$ GHz	120 kHz for $f < 1$ GHz
VBW	$\geq$ RBW	$\geq$ RBW
Sweep	auto	auto
Detector function	peak	AV
Trace	max hold	max hold

### Test Configuration:

- 1) 9 kHz to 30 MHz emissions:



- 2) 30 MHz to 1 GHz emissions:



**1) Fundamental emission:****Antenna polarization: Vertical:**

Frequency (MHz)	Read Level (dBuV)	Antenna Factor (dB/m)	Cable Loss (dB)	Preamplifier Factor (dB)	Level (dBuV/m)	Limit Line (dBuV/m)	Over Limit (dB)	Remark
49.860	94.92	6.34	0.70	27.88	74.08	80.0	-5.92	Average
49.860	98.11	6.34	0.70	27.88	77.27	100.0	-22.73	Peak

**Antenna polarization: Horizontal:**

Frequency (MHz)	Read Level (dBuV)	Antenna Factor (dB/m)	Cable Loss (dB)	Preamplifier Factor (dB)	Level (dBuV/m)	Limit Line (dBuV/m)	Over Limit (dB)	Remark
49.860	71.25	6.34	0.70	27.88	50.41	80.0	-29.59	Average
49.860	75.88	6.34	0.70	27.88	55.04	100.0	-44.96	Peak

Y: rotate EUT by 90° vertically.

X: rotate EUT by 90° clockwise.

Z: EUT as Radiated Emission test setup photograph in section 6 of this report.

Remark: Radiated Emission test setup photograph in section 6 of this report is the worst case and reported.

**2) other emissions:**

The receiver was scanned from the lowest frequency generated within the EUT to 1 GHz. When an emission was found, the table was rotated to produce the maximum signal strength. An initial pre-scan was performed for in peak detection mode using the receiver. The EUT was measured for both the Horizontal and Vertical polarities and performed a pre-test three orthogonal planes. The worst case emissions were reported.

An initial pre-scan was performed in the 3 m chamber using the spectrum analyzer in peak detection mode. Quasi-peak measurements were conducted based on the peak sweep graph. The EUT was measured by Bilog antenna with 2 orthogonal polarities.

The field strength is calculated by adding the Antenna Factor, Cable Factor & Peramplifier. The basic equation with a sample calculation is as follows:

Final Test Level = Receiver Reading + Antenna Factor + Cable Factor – Peramplifier Factor.

The following test results were performed on the EUT.

**9 kHz~30 MHz Field Strength of Unwanted Emissions. Quasi-Peak Measurement**

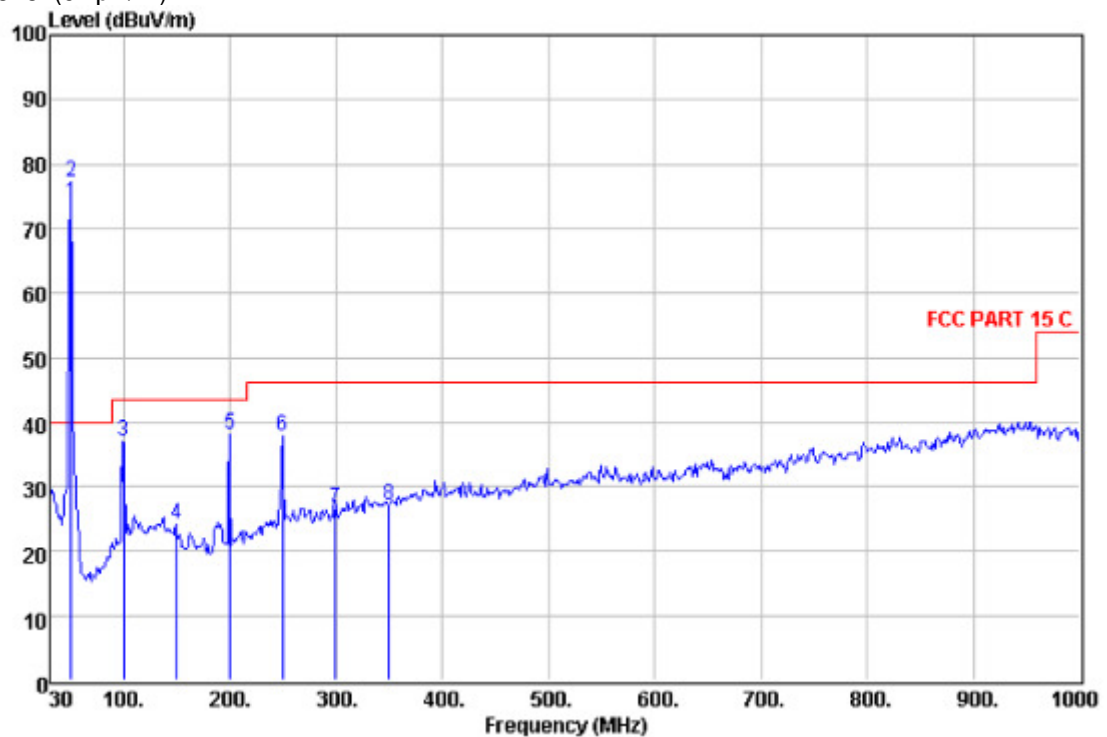
The measurements with active loop antenna were greater than 20dB below the limit, so the test data were not recorded in the test report.

30 MHz~1 GHz Field Strength of Unwanted Emissions.Quasi-Peak Measurement

Vertical:

Peak scan

Level (dBuV/m)



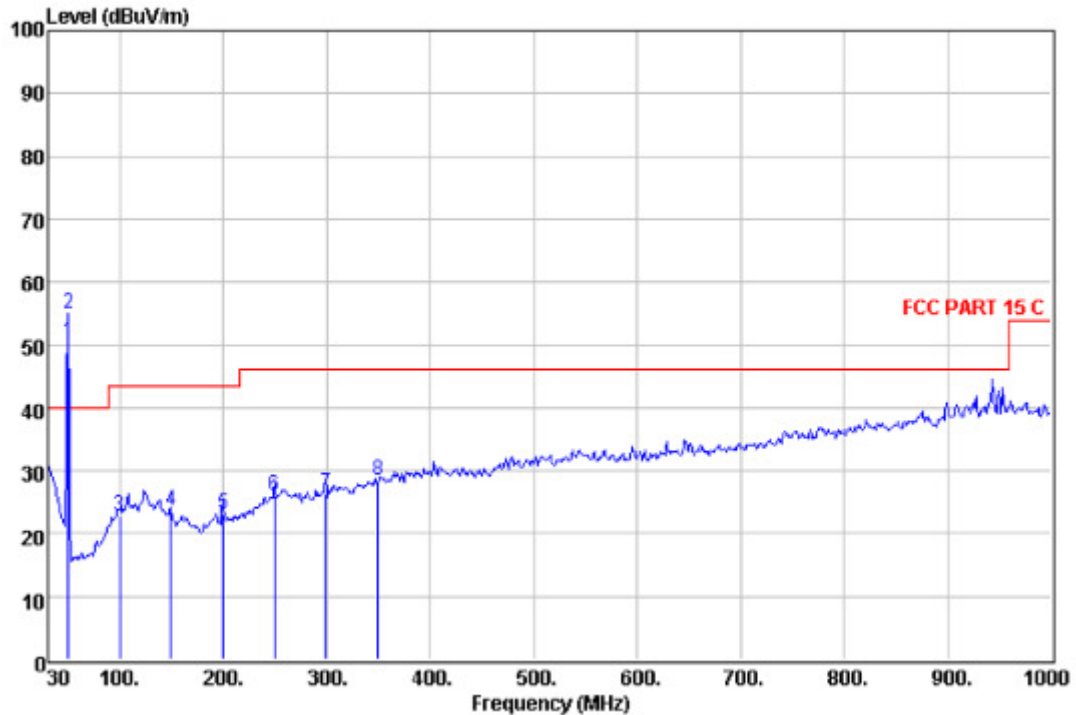
Quasi-peak measurement

Freq	ReadAntenna	Cable	Preamp	Over	Limit	
Level	Factor	Loss	Factor	Level	Limit	Line Remark
MHz	dBuV	dB/m	dB	dB	dBuV/m	dB dBuV/m
99.720	52.92	10.80	1.00	27.68	37.04	-6.46 43.50 QP
149.580	40.82	9.57	1.20	27.43	24.16	-19.34 43.50 QP
199.440	55.10	8.86	1.30	27.24	38.02	-5.48 43.50 QP
249.300	51.89	11.55	1.60	27.15	37.89	-8.11 46.00 QP
299.160	39.17	12.60	1.80	27.07	26.50	-19.50 46.00 QP
349.020	38.17	14.34	1.95	27.44	27.02	-18.98 46.00 QP

Horizontal:

Peak scan

Level (dBuV/m)



Quasi-peak measurement

Freq	ReadAntenna	Cable	Preamp	Over	Limit		
MHz	Level	Factor	Loss	Factor	Level	Limit	Line Remark
MHz	dBuV	dB/m	dB	dB	dBuV/m	dB	dBuV/m
99.720	38.56	10.80	1.00	27.68	22.68	-20.82	43.50 QP
149.580	40.13	9.57	1.20	27.43	23.47	-20.03	43.50 QP
199.440	40.03	8.86	1.30	27.24	22.95	-20.55	43.50 QP
249.300	40.08	11.55	1.60	27.15	26.08	-19.92	46.00 QP
299.160	38.97	12.60	1.80	27.07	26.30	-19.70	46.00 QP
349.020	39.51	14.34	1.95	27.44	28.36	-17.64	46.00 QP

Remark:

According to 15.35 (b) When average radiated emission measurements are specified in the regulations, including emission measurements below 1000 MHz, there is also a limit on the radio frequency emissions, as measured using instrumentation with a peak detector function, corresponding to 20 dB above the maximum permitted average limit for the frequency being investigated unless a different peak emission limit is otherwise specified in the rules, e.g., see Section 15.255.



## 7.4 Occupied Bandwidth

**Test Requirement:** FCC Part 15 C section 15.235

**Test Method:** ANSI C63.10: Clause 6.9

**Test Status:** Test in transmitting mode.

**Requirements:**

15.235(b): The field strength of any emissions appearing between the band edges and up to 10 kHz above and below the band edges shall be attenuated at least 26 dB below the level of the unmodulated carrier.

Operation within the band: 49.82 – 49.90 MHz.

**Test Procedure:**

The useful radiated emission from the EUT was detected by the spectrum analyser with peak detector. The vertical Scale is set to 10dB per division. The horizontal scale is set to 10 kHz per division. Read the down 26dB bandwidth of the carrier.

Set the spectrum analyzer: start at 49.81MHz and stop at 49.91MHz.

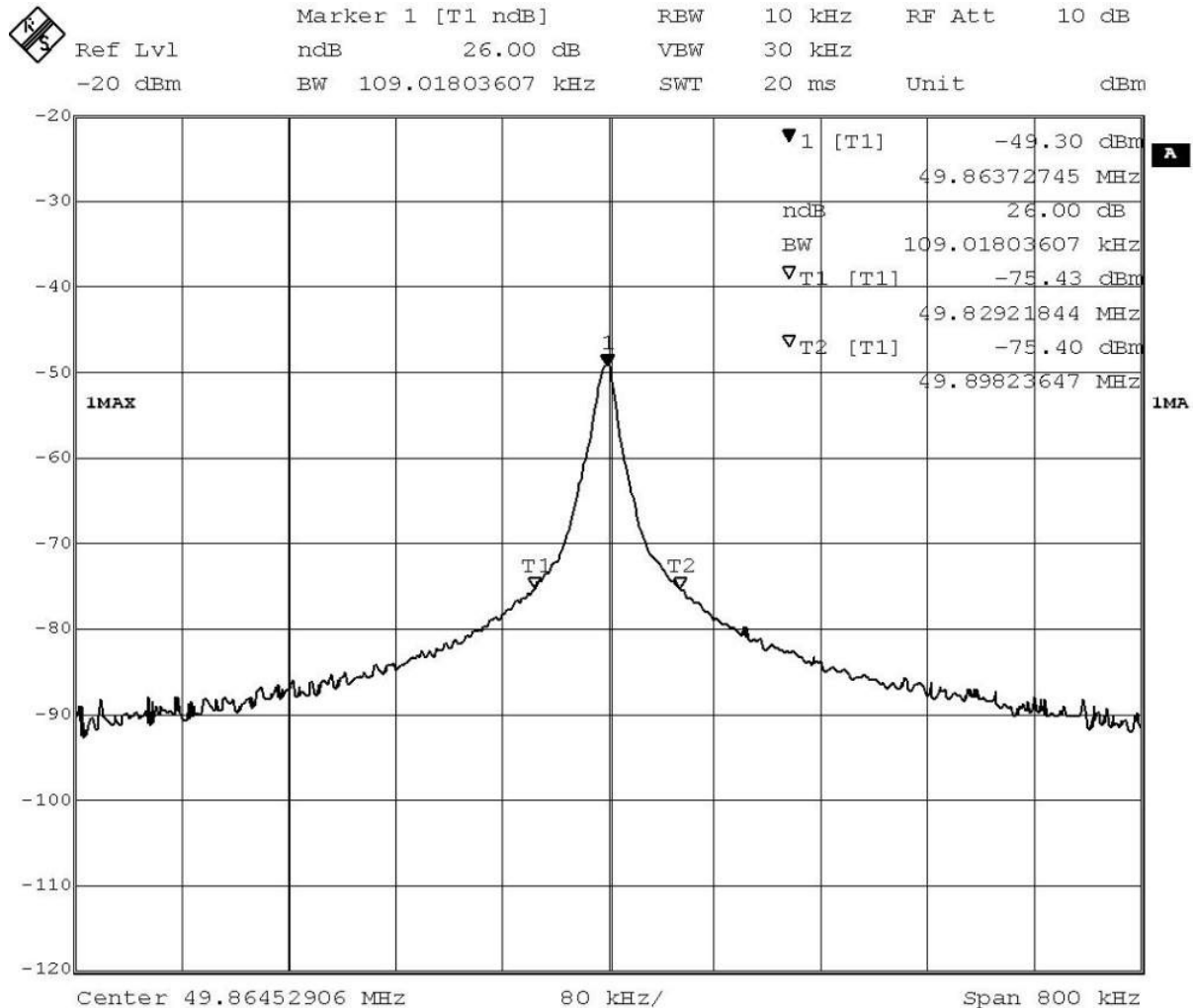
Set the spectrum analyzer: RBW = 10 kHz, VBW = 30 kHz

Sweep = auto; Detector Function = Peak. Trace = Max Hold.

Mark the peak frequency and -26 dB points bandwidth.



The graph as below:



26dB bandwidth lower frequency :49.82921844MHz

26dB bandwidth upper frequency :49.89823647MHz





## 7.5 Label Requirement

**Label requirement:** FCC Part 15 C section 15.19

**Base standard:** FCC Part 2, § 2.925 & § 2.926

**For Certification:**

**FCC identifier:** Identifier consists of the two elements. It shall be preceded by the term FCC ID in capital letters on a single line, and shall be of a type size large enough to be legible without the aid of magnification.

Example:

FCC ID: XXX123

Here, XXX means Grantee Code, and 123 means Equipment Product Code. Grantee Code is issued by FCC, A grantee code will have three characters consisting of Arabic numerals, capital letters, or combination

thereof.

while Equipment Product code be defined by the applicant.

The use of "wild card" characters, such as @, ( ), !, &, \$ or / , in the Product Code is not allowed.

Whole the FCC ID numbers are no more than 14.

**Compliance statement:**

The FCC identifier shall be of a type size large enough to be legible without the aid of magnification.

All other devices shall bear the following statement in a conspicuous location on the device:

This device complies with Part 15 of the FCC Rules. Operation is subject to the following two conditions:

1. This device may not cause harmful interference, and
2. This device must accept any interference received, including interference that may cause undesired operation.

**But it is allowed to put it in the user manual for the device's size smaller than 8cm\*10cm.**

**Location:**

The label shall be located in a conspicuous location on the device.

Label text and information should be in a size of type large enough to be readily legible, consistent with the dimensions of the equipment and the label. However, the type size for the text is not required to be larger than eight point.

**--The End of Report--**