



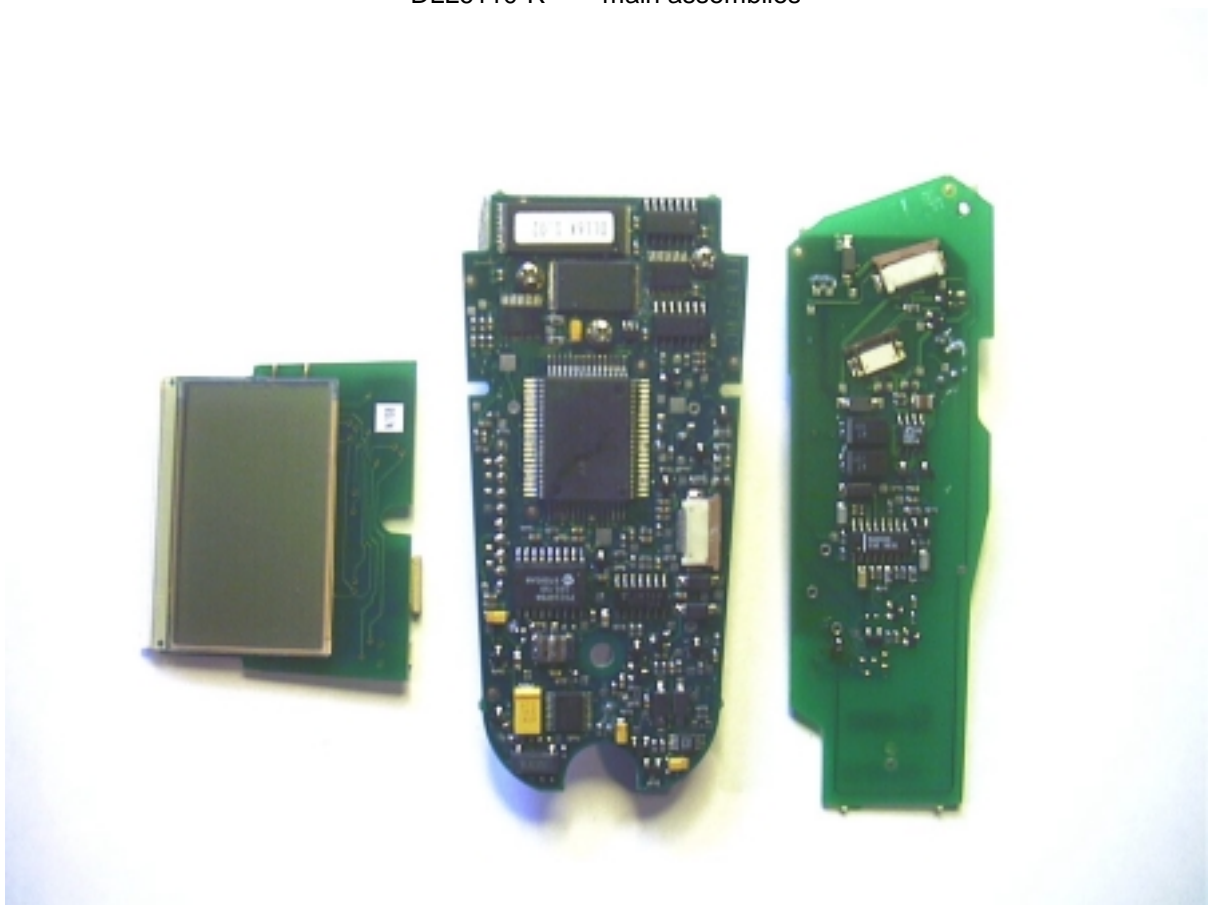
DLL6110-R upper case removed



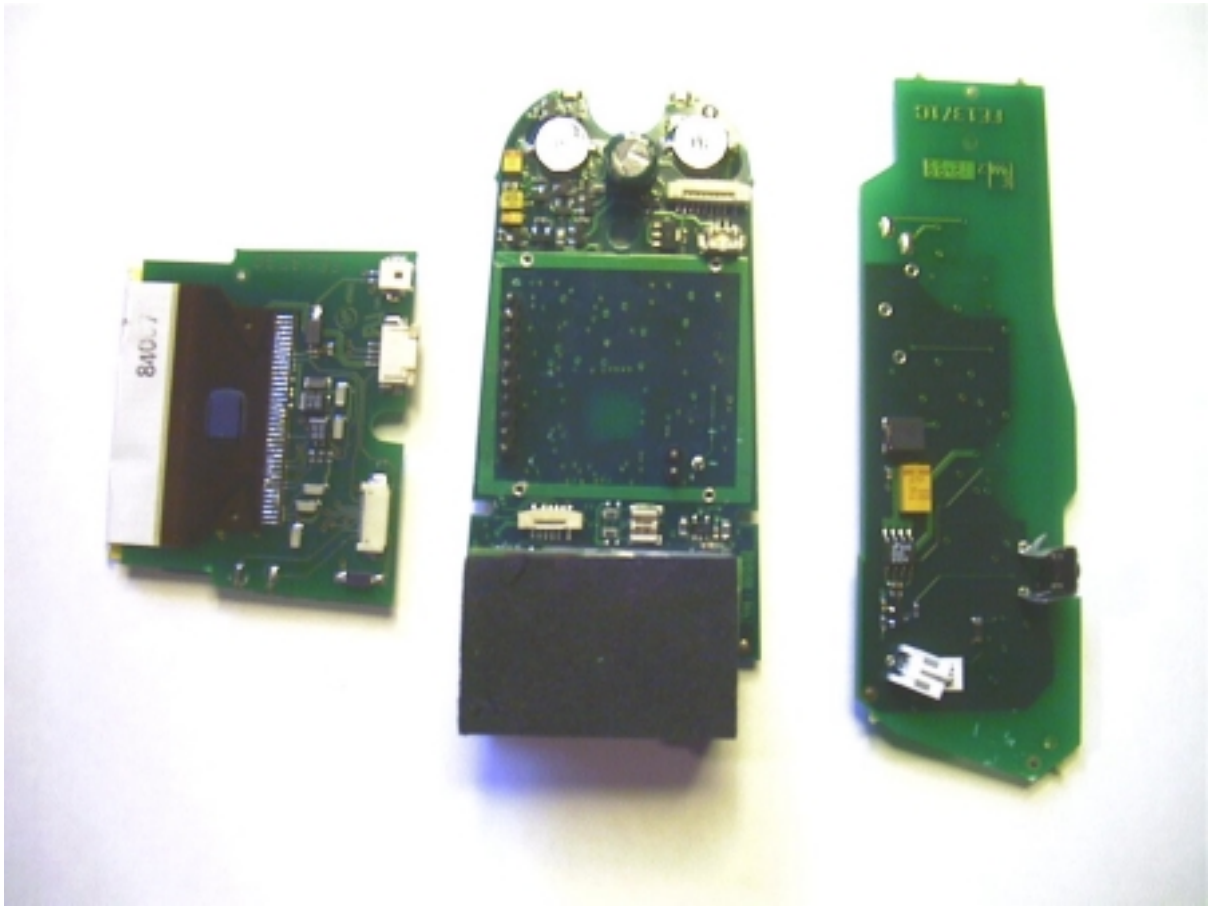
DLL6110-R main assemblies



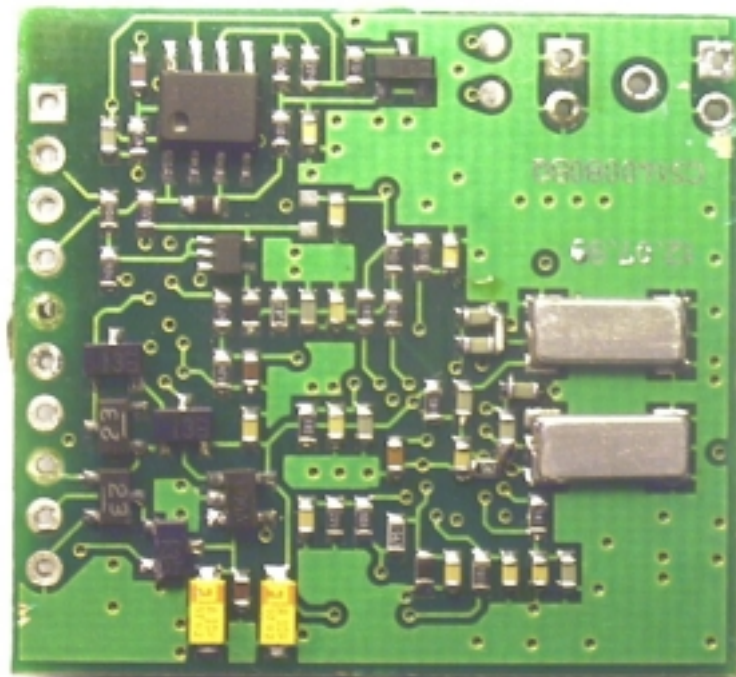
DLL6110-R main assemblies



DLL6110-R pcbs (except radio module)

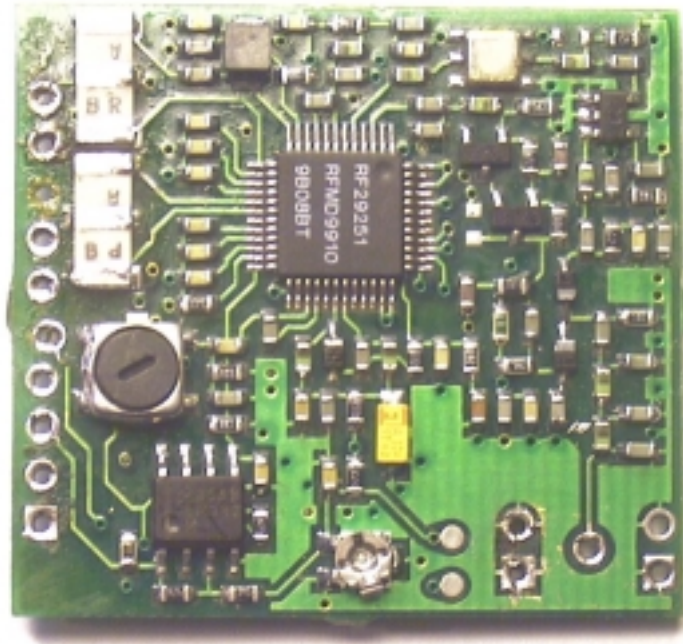


DLL6110-R      pcs (except radio module)



DLL6110-R radio module pcb





DLL6110-R radio module pcb



The only difference between the DLL6110-R and the DLL6010-R is that the display board is not fitted as shown above.