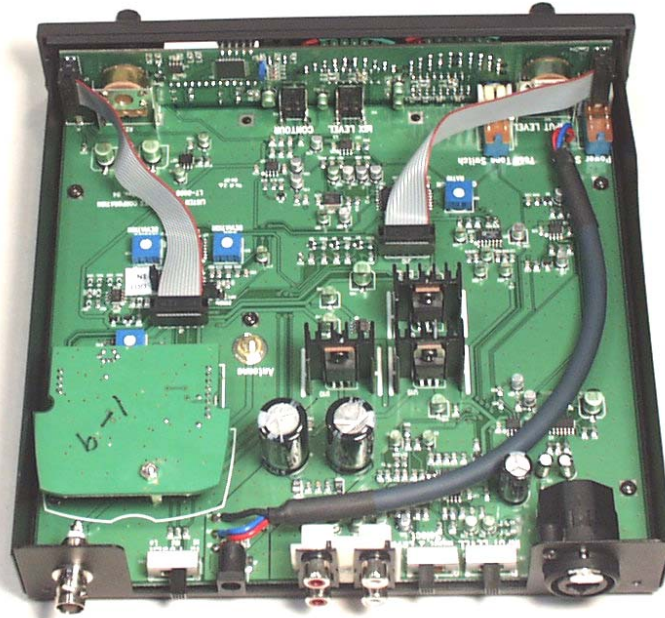
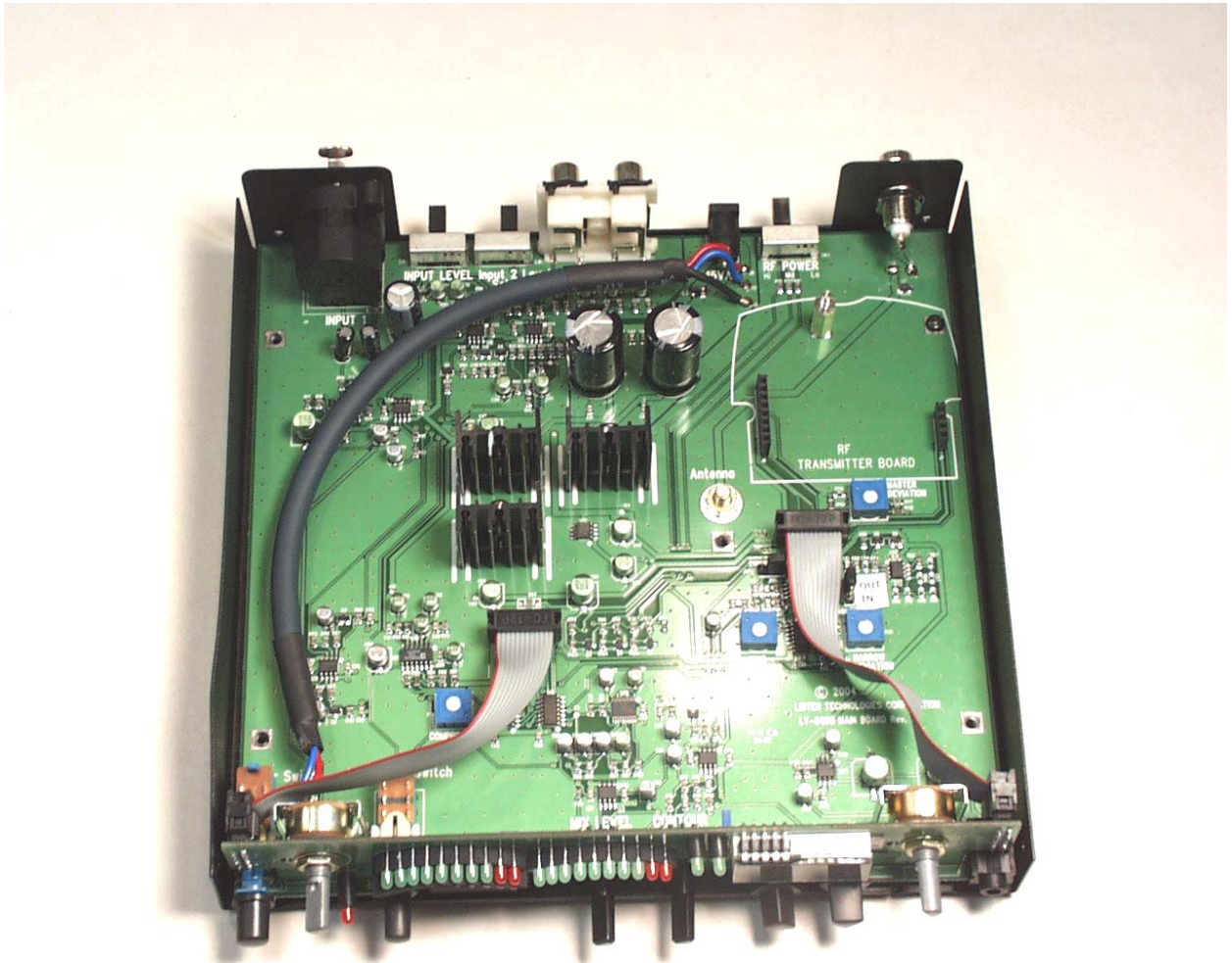


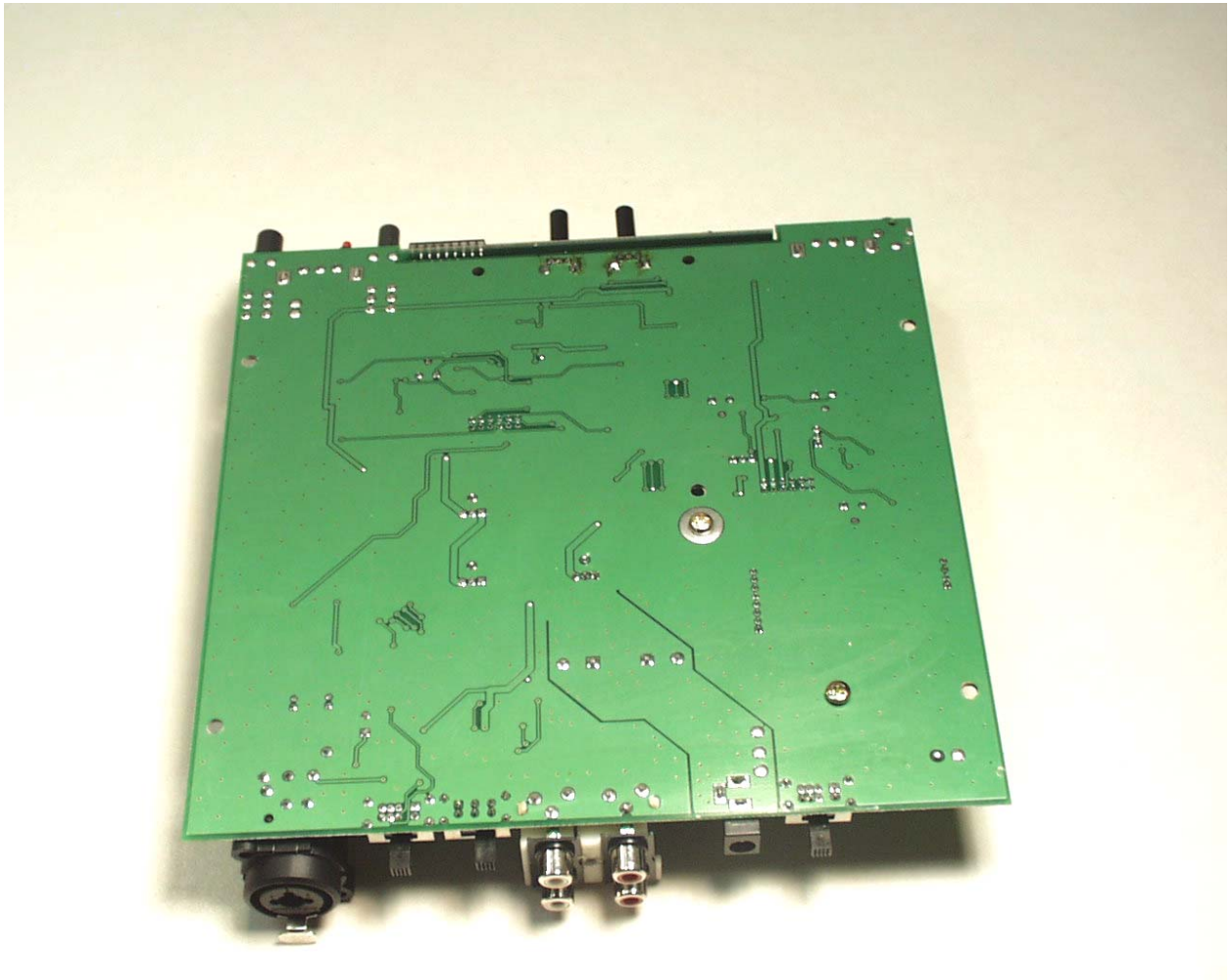
Internal View of the EUT with Transmitter PCB Installed



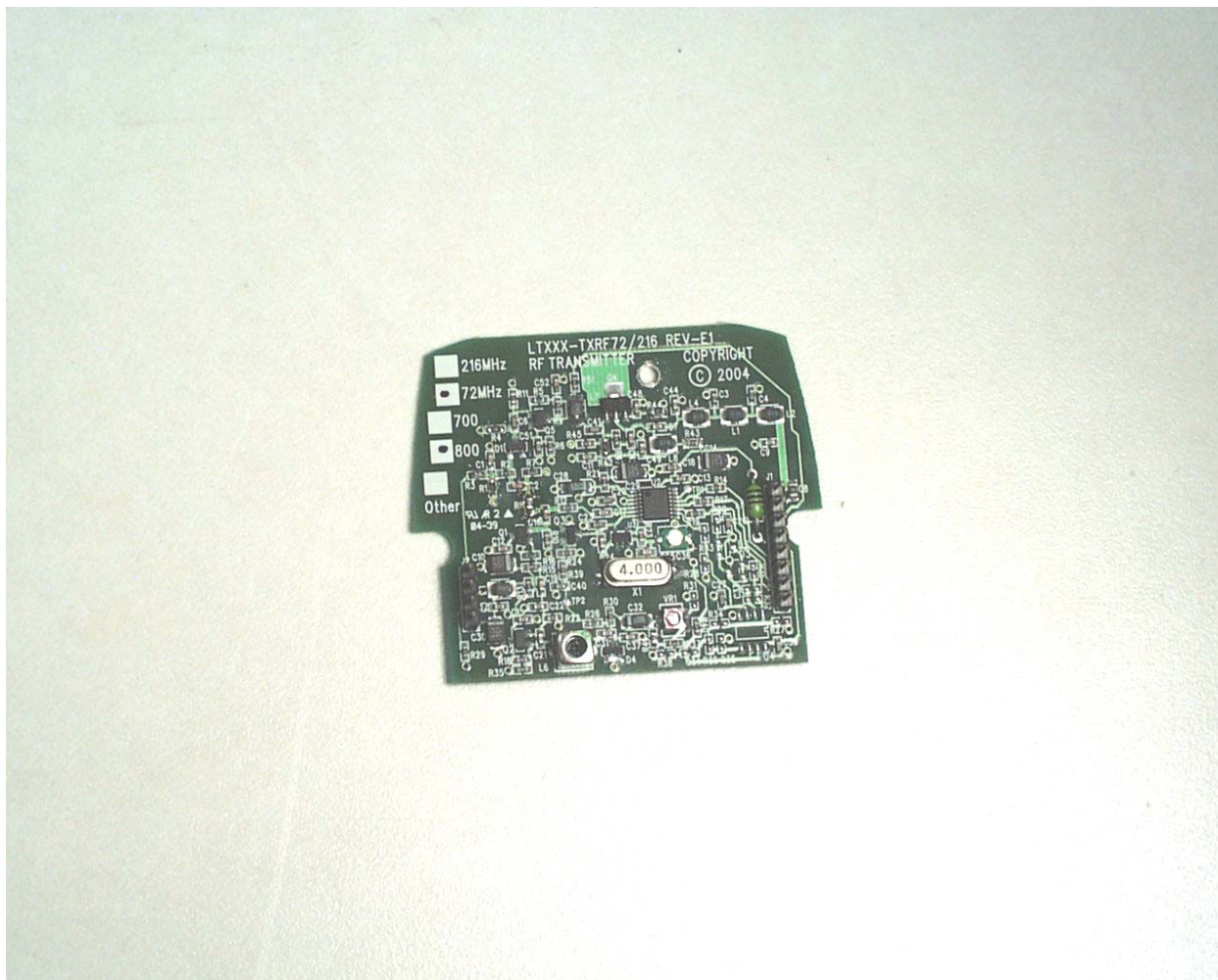
Internal View of the EUT with Transmitter PCB Removed



Trace Side of the Main PCB



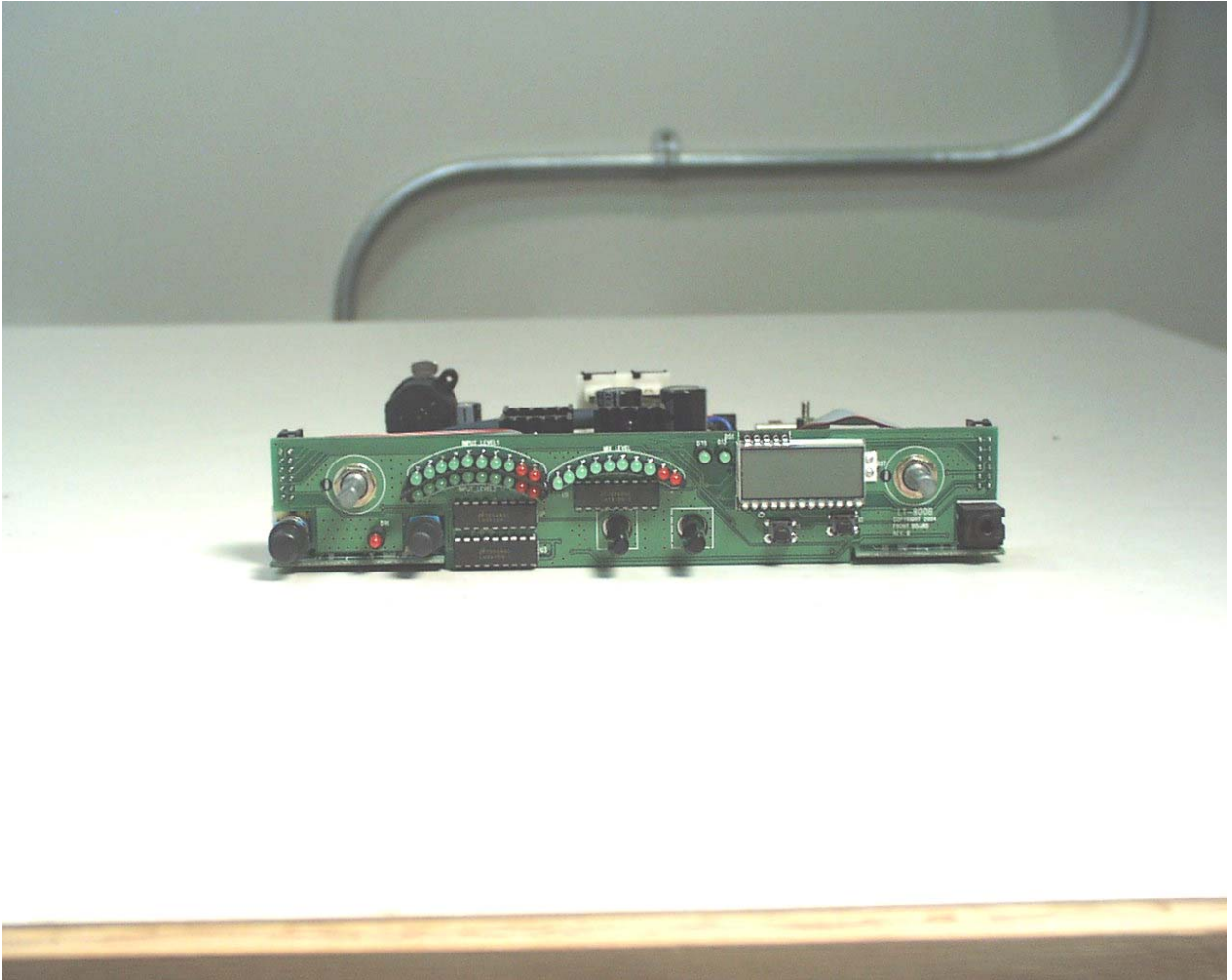
Component Side of the Transmitter PCB



Trace Side of the Transmitter PCB While Connected to the Control Card



Front View of the Front Panel PCB



Rear View of the Front Panel PCB

