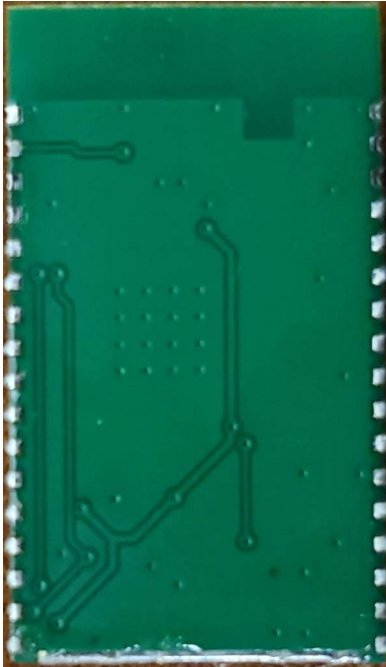
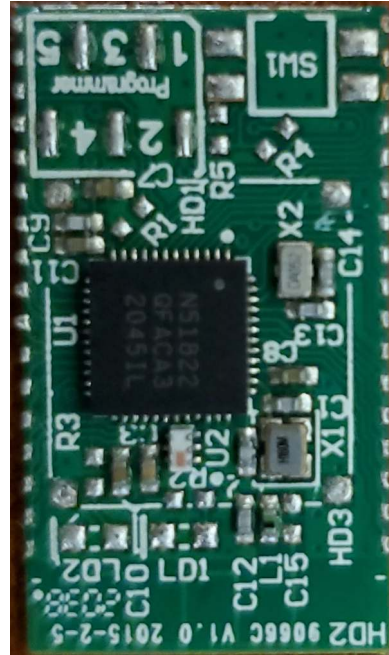


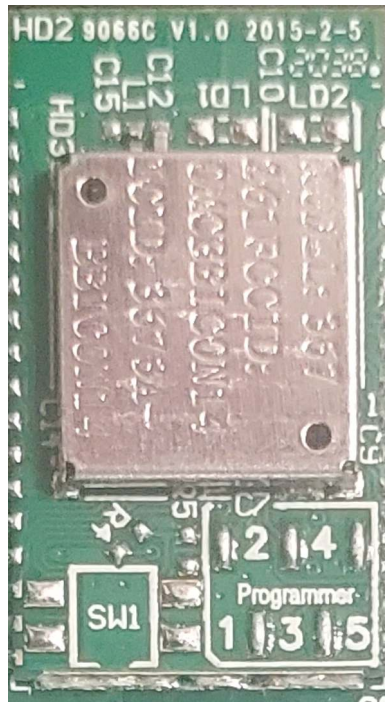
Internal Photos - 1



Xmtr - Bottom Side

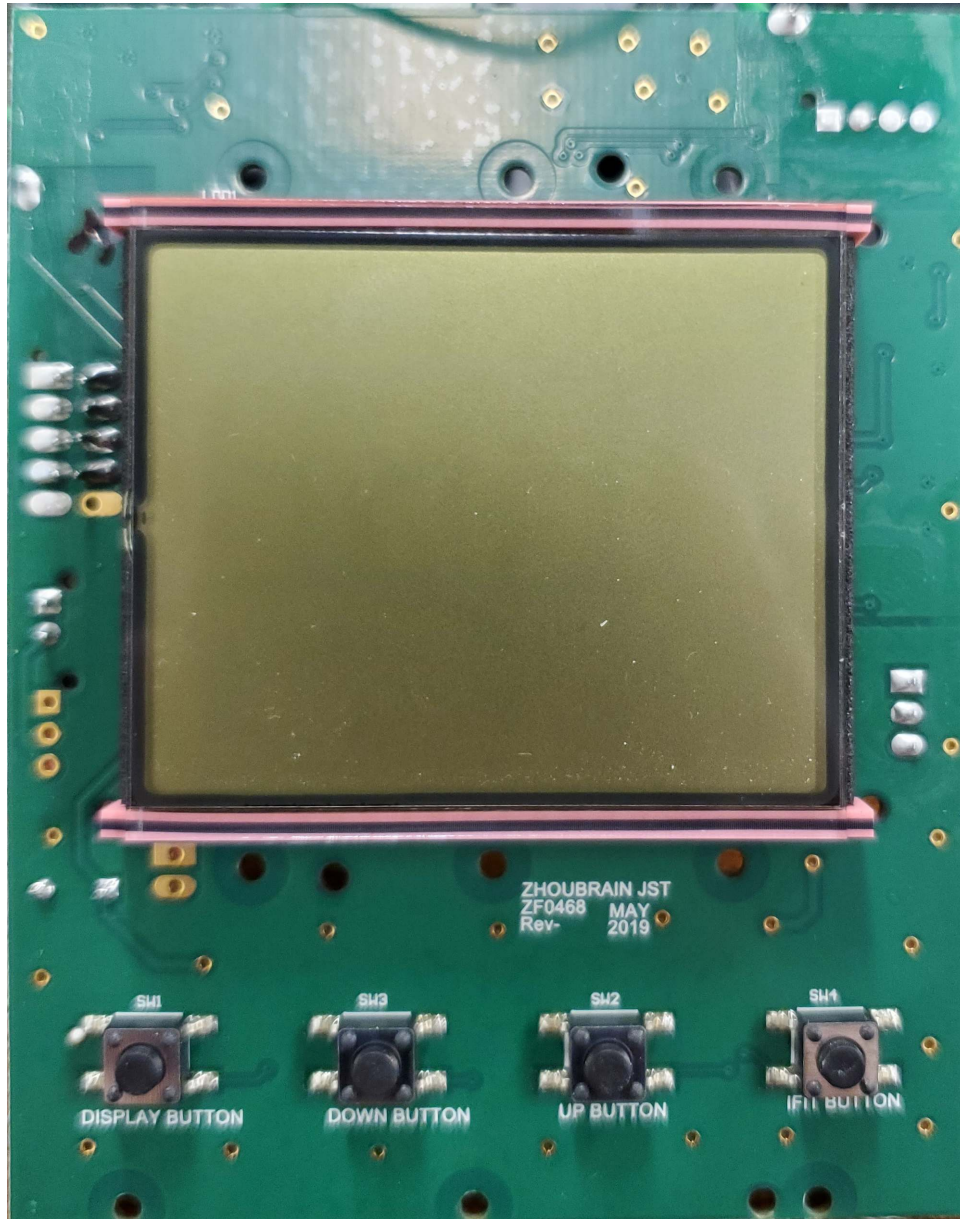


Xmtr - Top Side (no can)



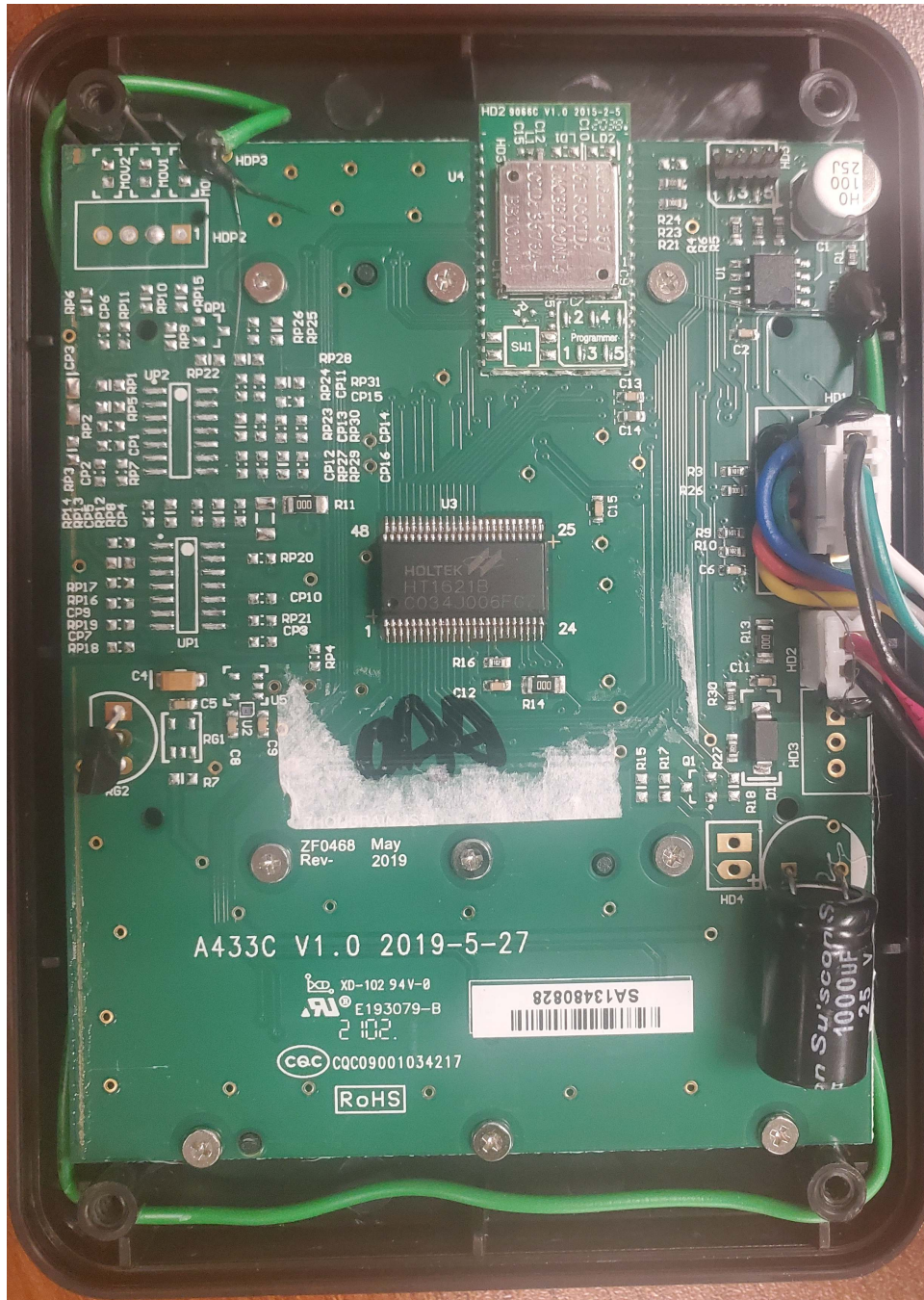
Xmtr PCB - Top (w/can)

Internal Photos - 2



Motherboard - Display side

Internal Photos - 3



Motherboard - Circuit Side - Xmtr populated

Internal Photos - 4



Motherboard - Circuit Side - Xmtr Unpopulated



Internal photo showing xmtr board on motherboard



Internal photo showing side by side opened unit