

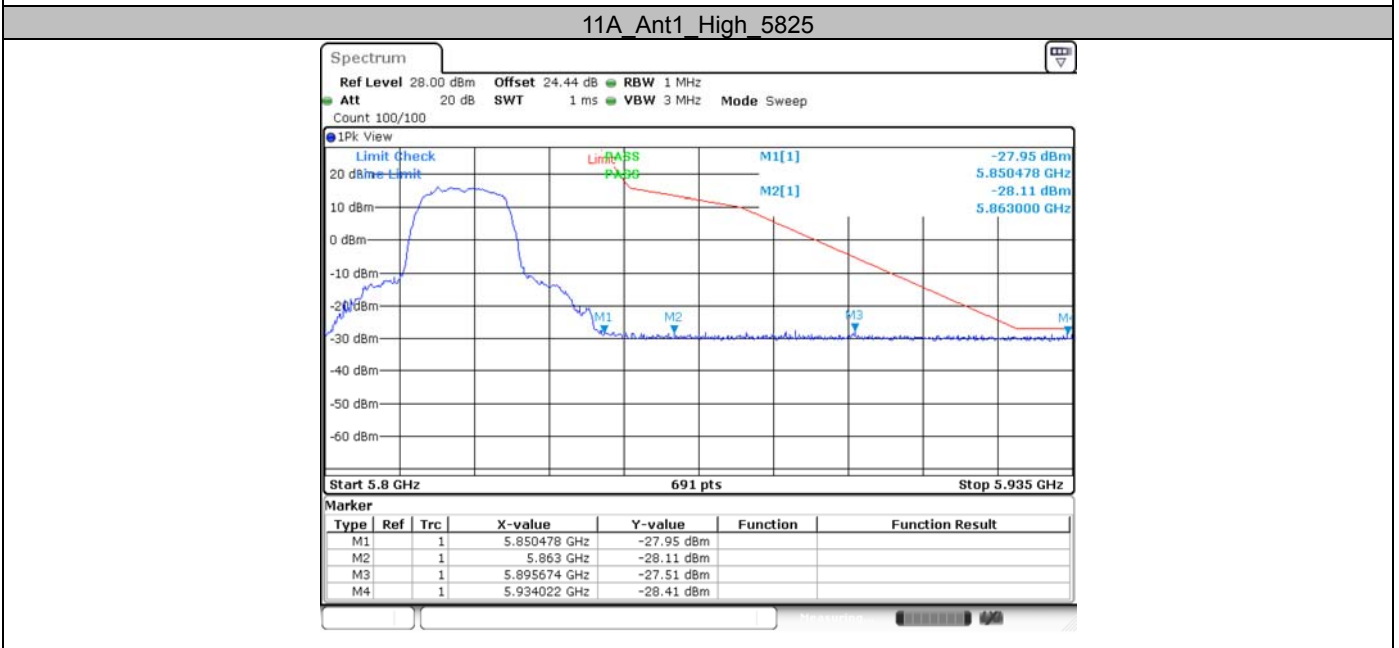
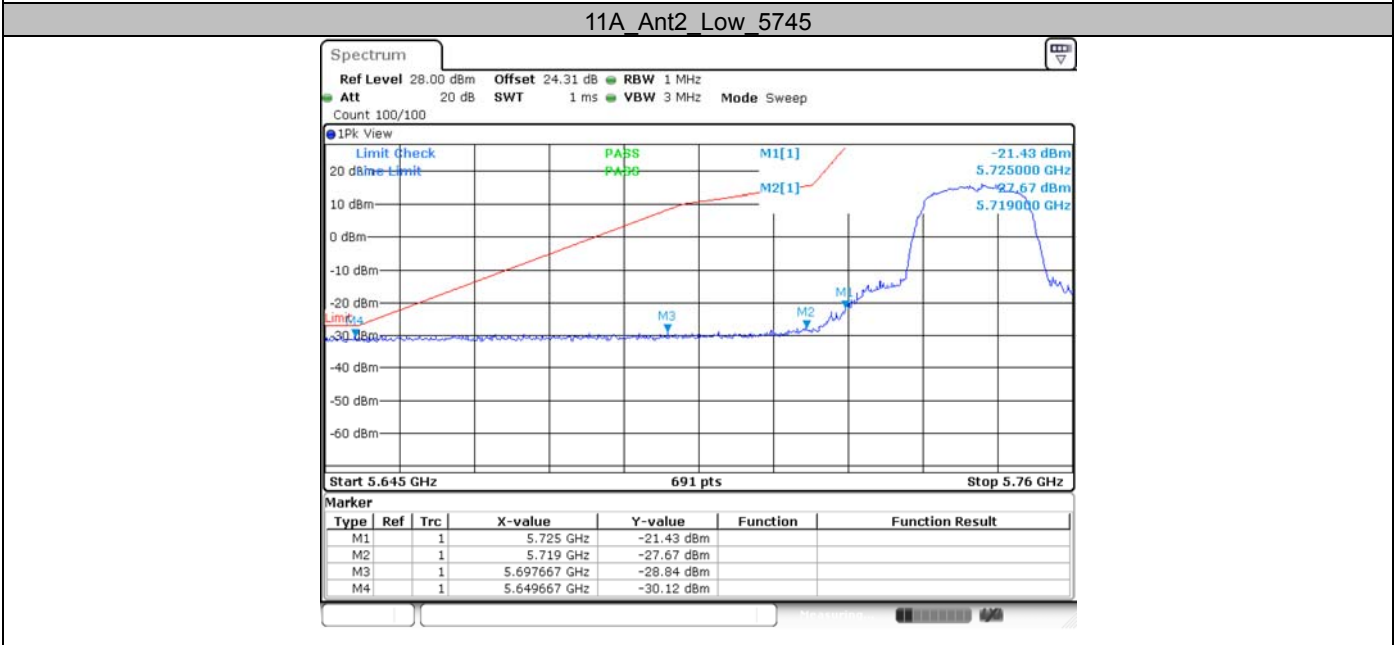
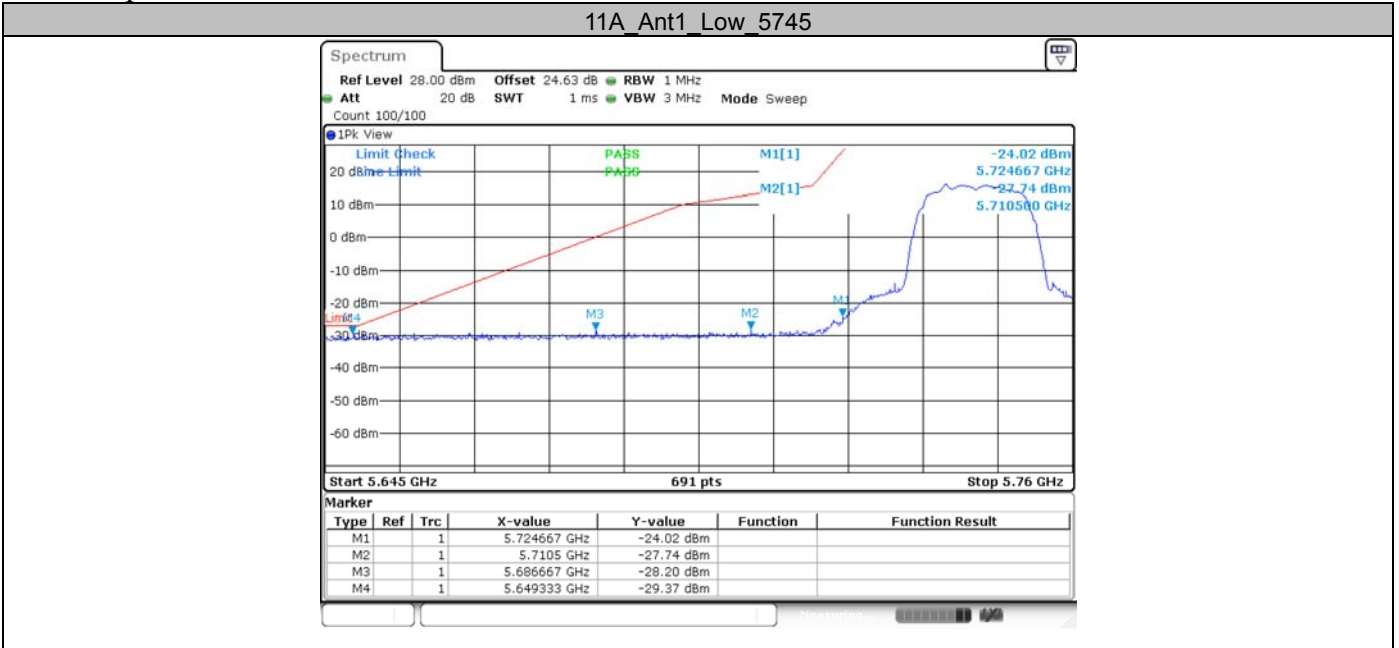
Appendix G: Band edge measurements
Test Result B4

Test Mode	Antenna	Ch Name	Frequency [MHz]	Freq Range [MHz]	Result [dBm]	Limit [dBm]	Verdict
11A	Ant1	Low	5745	5650~5700	-28.2	≤0.13	PASS
				5700~5720	-27.74	≤12.94	PASS
				5720~5725	-24.02	≤26.24	PASS
				5760~5650	-29.37	≤-27	PASS
	Ant2	Low	5745	5650~5700	-28.84	≤8.27	PASS
				5700~5720	-27.67	≤15.32	PASS
				5720~5725	-21.43	≤27.00	PASS
				5760~5650	-30.12	≤-27	PASS
	Ant1	High	5825	5850~5855	-27.95	≤16.69	PASS
				5855~5875	-28.11	≤12.24	PASS
				5875~5925	-27.51	≤-11.70	PASS
				5925~5935	-28.41	≤-27	PASS
	Ant2	High	5825	5850~5855	-27.92	≤18.03	PASS
				5855~5875	-28.1	≤10.05	PASS
				5875~5925	-27.74	≤-20.82	PASS
				5925~5935	-28.88	≤-27	PASS
11N20MIMO	Ant1	Low	5745	5650~5700	-28.7	≤5.93	PASS
				5700~5720	-28.17	≤15.13	PASS
				5720~5725	-21.82	≤27.00	PASS
				5760~5650	-30.18	≤-27	PASS
	Ant2	Low	5745	5650~5700	-28.73	≤5.81	PASS
				5700~5720	-27.6	≤15.27	PASS
				5720~5725	-23.33	≤26.62	PASS
				5760~5650	-30.52	≤-27	PASS
	Ant1	High	5825	5850~5855	-27.78	≤15.80	PASS
				5855~5875	-28.07	≤13.34	PASS
				5875~5925	-27.42	≤0.32	PASS
				5925~5935	-28.87	≤-27	PASS
	Ant2	High	5825	5850~5855	-27.63	≤22.04	PASS
				5855~5875	-28.62	≤10.71	PASS
				5875~5925	-28.63	≤-24.88	PASS
				5925~5935	-27.81	≤-27	PASS
11N40MIMO	Ant1	Low	5755	5650~5700	-28.89	≤-2.47	PASS
				5700~5720	-24.18	≤15.42	PASS
				5720~5725	-21.46	≤22.59	PASS
				5780~5650	-29.69	≤-27	PASS
	Ant2	Low	5755	5650~5700	-38.53	≤0.72	PASS
				5700~5720	-35.71	≤15.25	PASS
				5720~5725	-34.79	≤21.25	PASS
				5780~5650	-39.99	≤-27	PASS
	Ant1	High	5795	5850~5855	-29.11	≤18.03	PASS
				5855~5875	-28.54	≤10.37	PASS
				5875~5925	-28.6	≤-19.58	PASS
				5925~5935	-28.27	≤-27	PASS
	Ant2	High	5795	5850~5855	-28.73	≤16.39	PASS
				5855~5875	-28.91	≤12.92	PASS
				5875~5925	-28.37	≤-24.72	PASS
				5925~5935	-29.1	≤-27	PASS
11AC20 MIMO	Ant1	Low	5745	5650~5700	-28.93	≤-19.35	PASS
				5700~5720	-27.44	≤12.38	PASS
				5720~5725	-22.89	≤27.00	PASS
				5760~5650	-29.66	≤-27	PASS
	Ant2	Low	5745	5650~5700	-29.16	≤-15.41	PASS
				5700~5720	-28.93	≤15.51	PASS
				5720~5725	-28.99	≤23.58	PASS

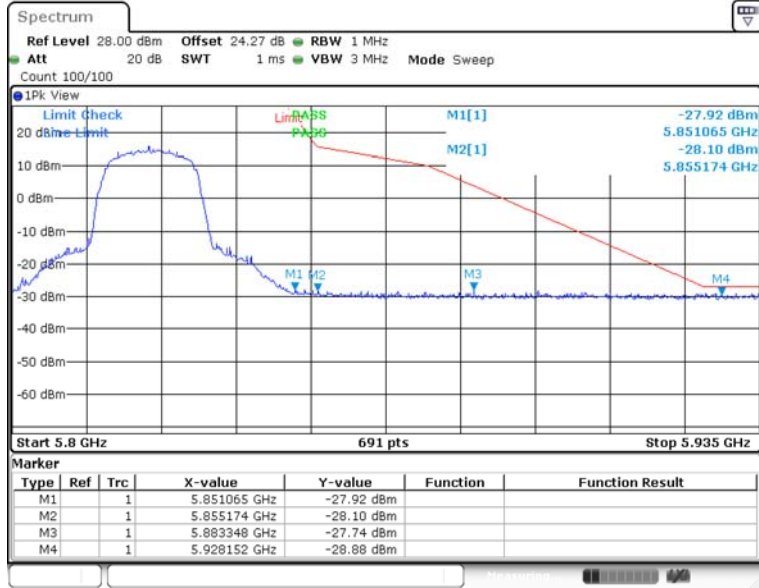


	Ant1	High	5825	5760~5650	-30.1	≤-27	PASS
				5850~5855	-27.34	≤25.61	PASS
				5855~5875	-28.03	≤10.49	PASS
				5875~5925	-28.26	≤-11.12	PASS
	Ant2	High	5825	5925~5935	-27.85	≤-27	PASS
				5850~5855	-28.07	≤22.93	PASS
				5855~5875	-28.6	≤10.38	PASS
				5875~5925	-28.46	≤-2.00	PASS
11AC40 MIMO	Ant1	Low	5755	5925~5935	-28.59	≤-27	PASS
				5650~5700	-29.06	≤8.83	PASS
				5700~5720	-22.49	≤15.47	PASS
				5720~5725	-22.09	≤22.14	PASS
	Ant2	Low	5755	5780~5650	-29.92	≤-27	PASS
				5650~5700	-29.61	≤9.98	PASS
				5700~5720	-26.04	≤15.42	PASS
				5720~5725	-25.09	≤21.70	PASS
	Ant1	High	5795	5780~5650	-30	≤-27	PASS
				5850~5855	-29.13	≤16.94	PASS
				5855~5875	-27.73	≤10.17	PASS
				5875~5925	-26.93	≤-26.48	PASS
	Ant2	High	5795	5925~5935	-29.14	≤-27	PASS
				5850~5855	-29.3	≤16.39	PASS
				5855~5875	-28.44	≤15.39	PASS
				5875~5925	-27.64	≤-9.50	PASS
11AC80 MIMO	Ant1	Low	5775	5925~5935	-29.04	≤-27	PASS
				5650~5700	-27.35	≤9.03	PASS
				5700~5720	-23.7	≤15.55	PASS
				5720~5725	-21.67	≤18.74	PASS
		High	5775	5800~5650	-30.07	≤-27	PASS
				5850~5855	-25.48	≤15.62	PASS
				5855~5875	-25.96	≤11.83	PASS
				5875~5925	-27.94	≤-26.25	PASS
	Ant2	Low	5775	5925~5935	-29.03	≤-27	PASS
				5650~5700	-26.09	≤7.53	PASS
				5700~5720	-24.35	≤15.36	PASS
				5720~5725	-24.63	≤16.69	PASS
		High	5775	5800~5650	-29.58	≤-27	PASS
				5850~5855	-28.97	≤17.45	PASS
				5855~5875	-27.87	≤10.63	PASS
				5875~5925	-29.1	≤-26.05	PASS
				5925~5935	-29.28	≤-27	PASS

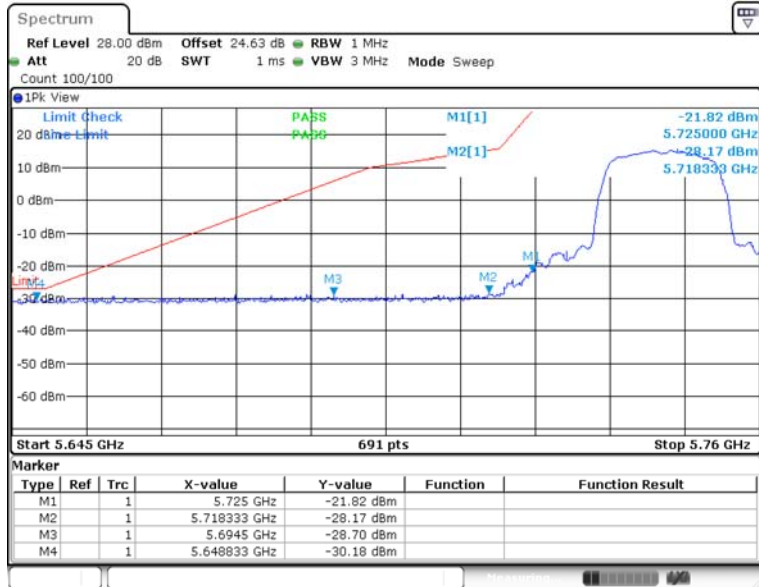
Test Graphs B4



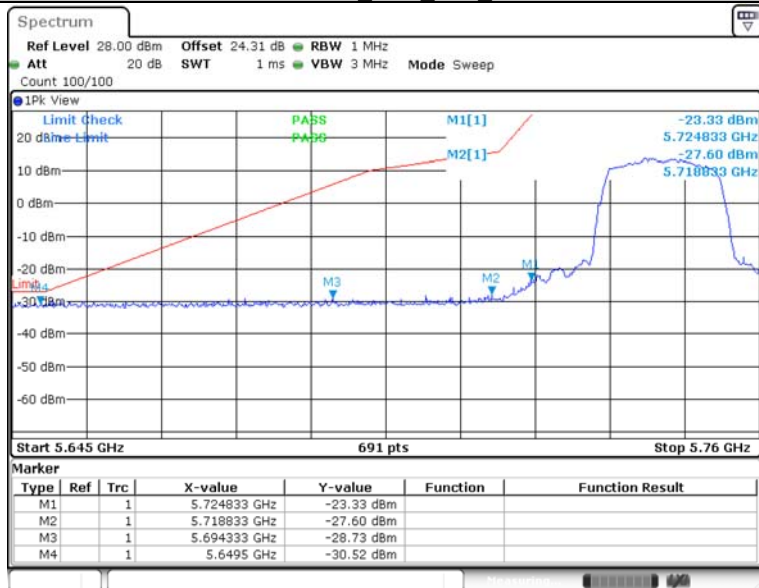
11A_Ant2_High_5825



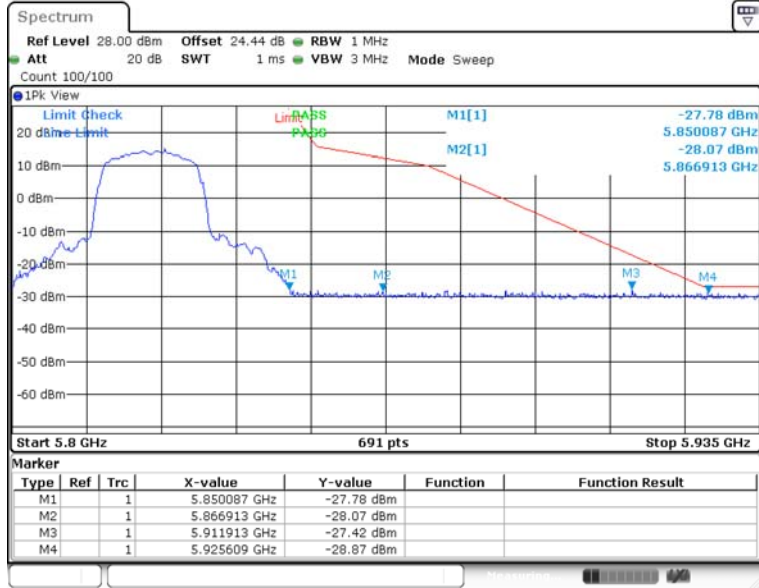
11N20MIMO Ant1_Low_5745



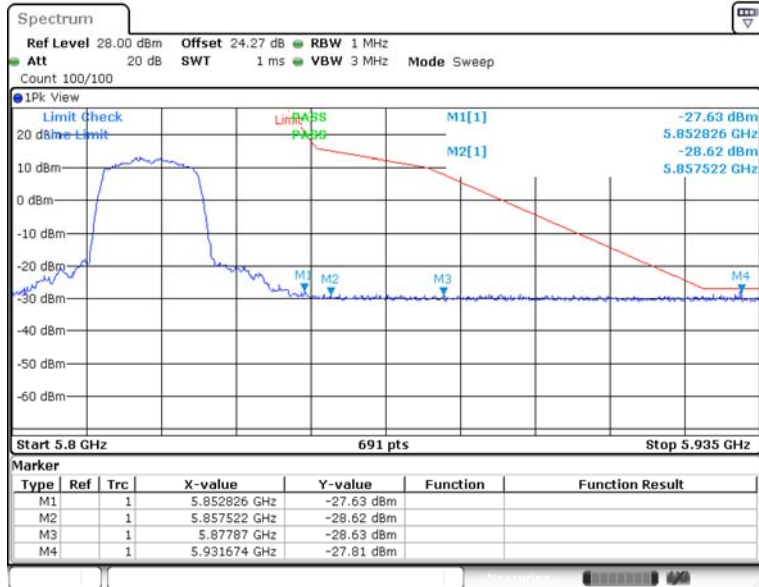
11N20MIMO Ant2_Low_5745



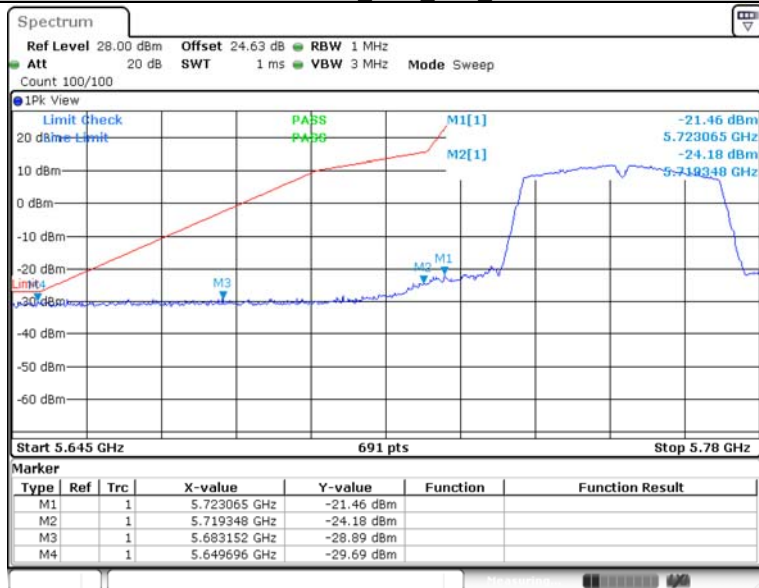
11N20MIMO_Ant1_High_5825



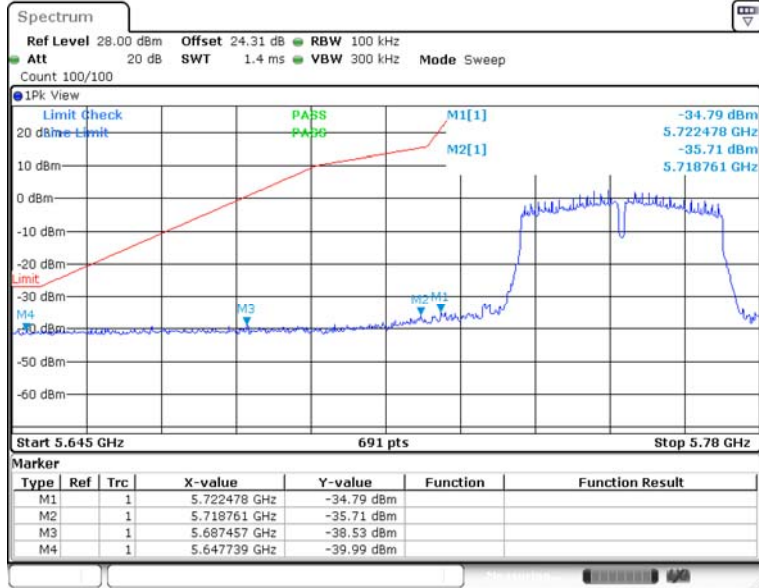
11N20MIMO_Ant2_High_5825



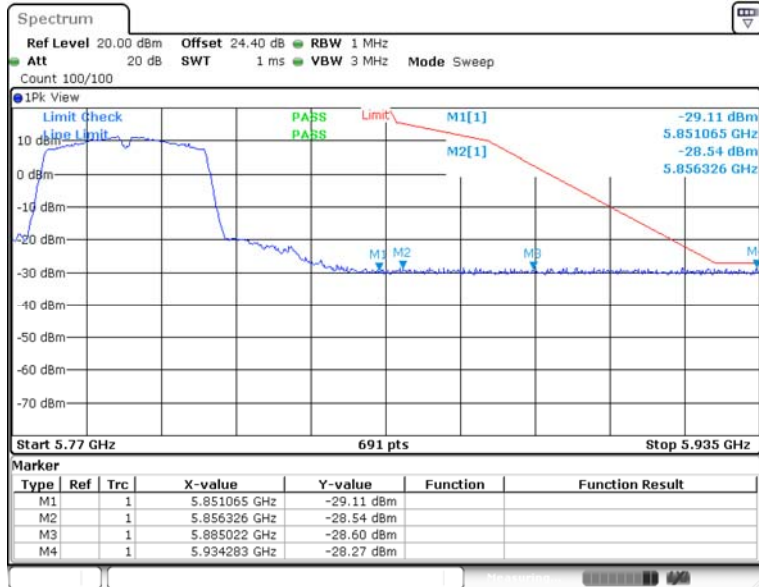
11N40MIMO_Ant1_Low_5755



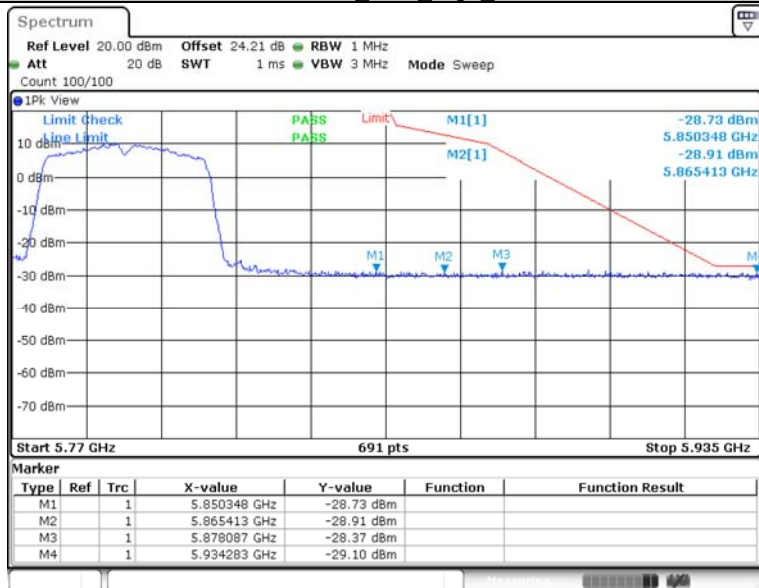
11N40MIMO_Ant2_Low_5755



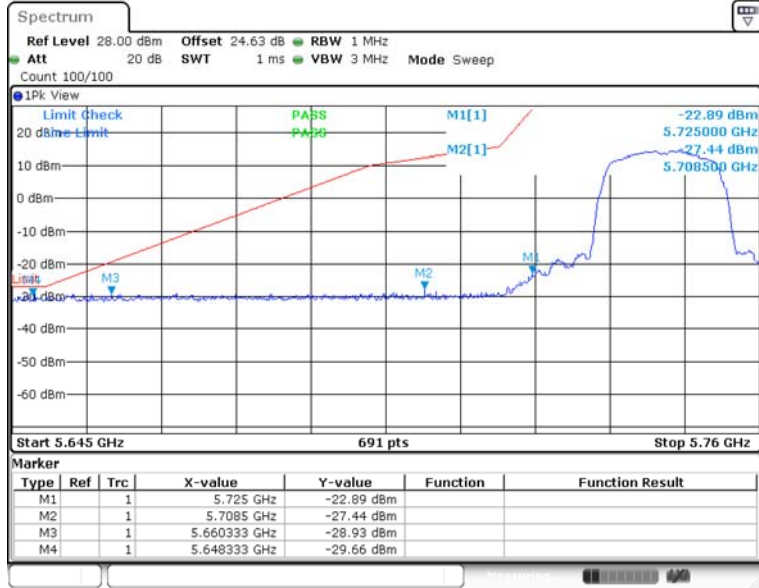
11N40MIMO_Ant1_High_5795



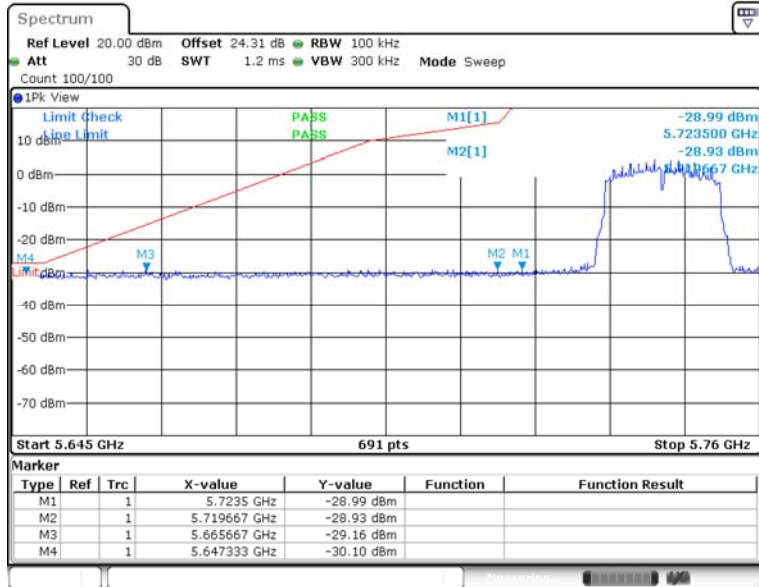
11N40MIMO_Ant2_High_5795



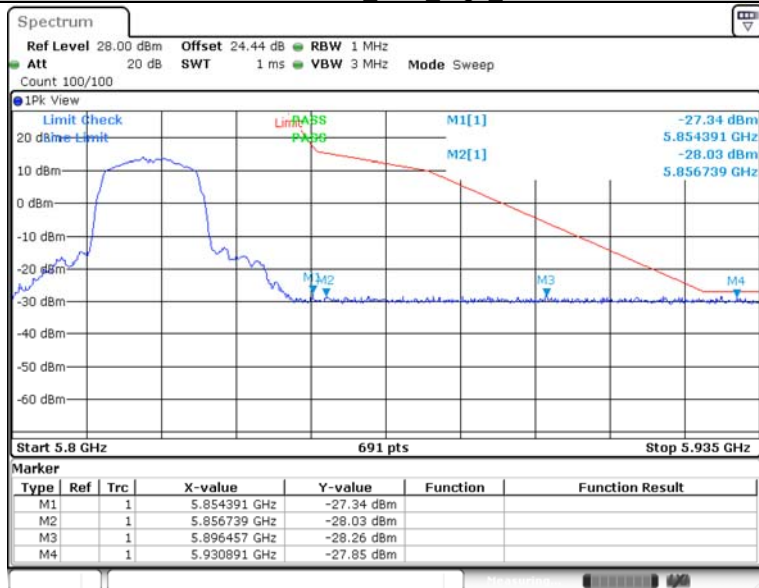
11AC20MIMO Ant1 Low 5745



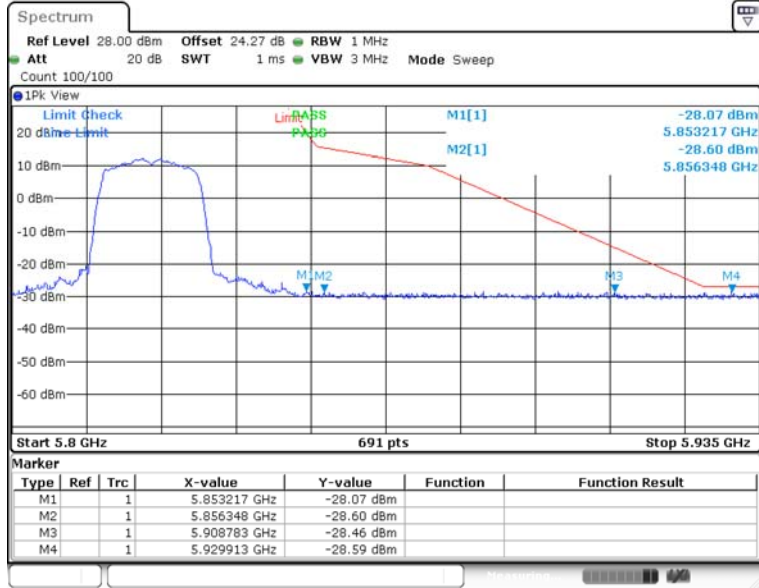
11AC20MIMO Ant2 Low 5745



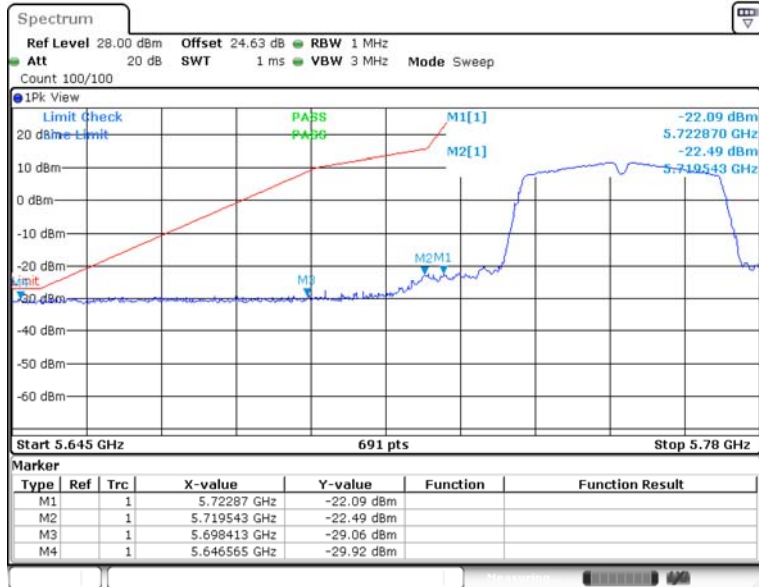
11AC20MIMO Ant1 High 5825



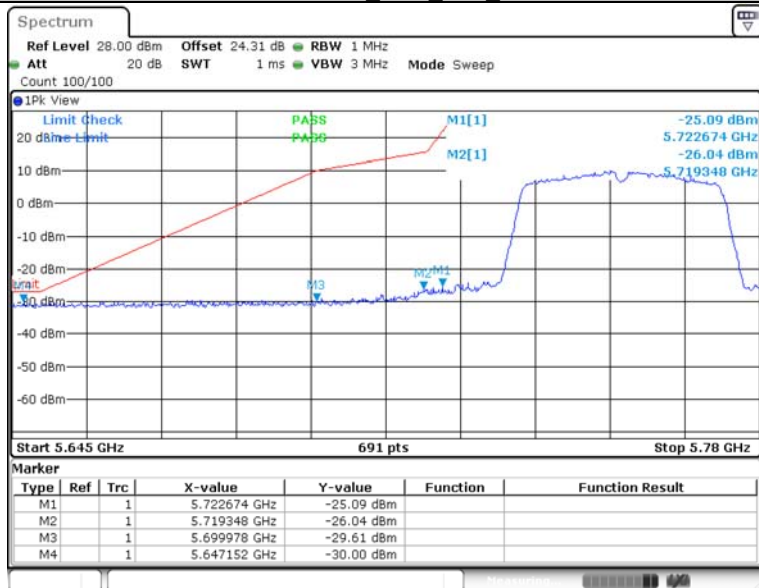
11AC20MIMO Ant2 High 5825



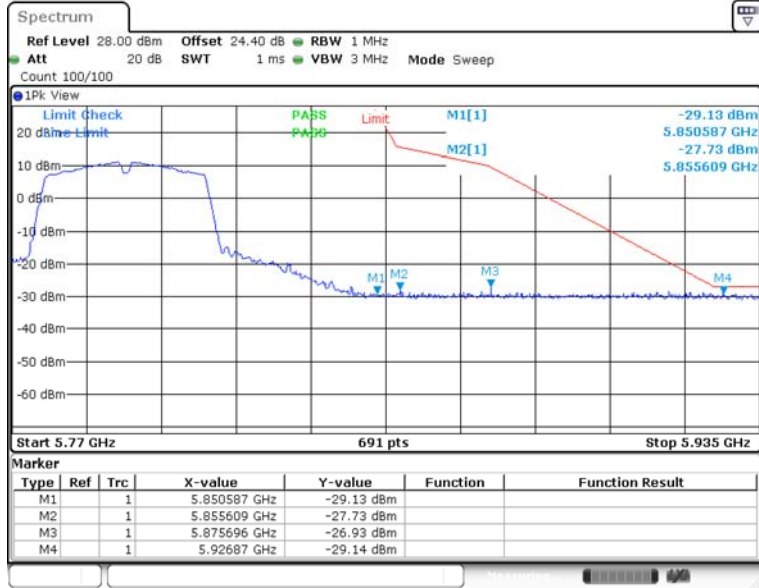
11AC40MIMO Ant1 Low 5755



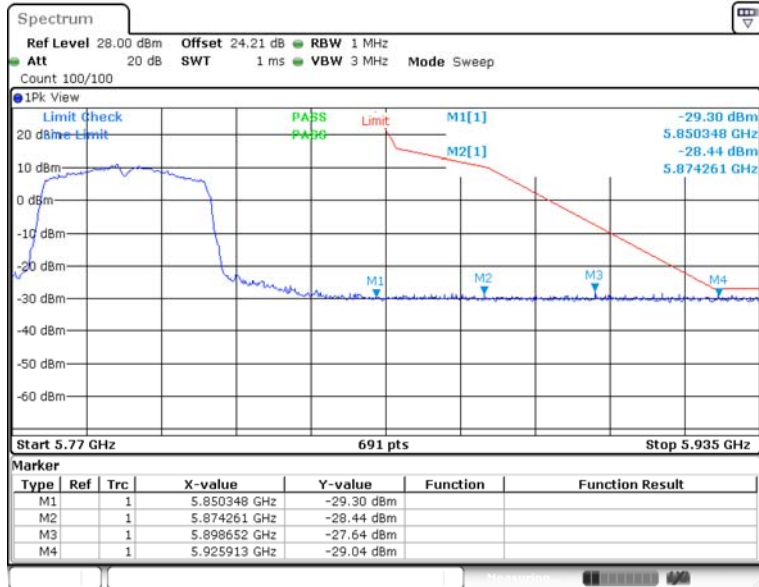
11AC40MIMO Ant2 Low 5755



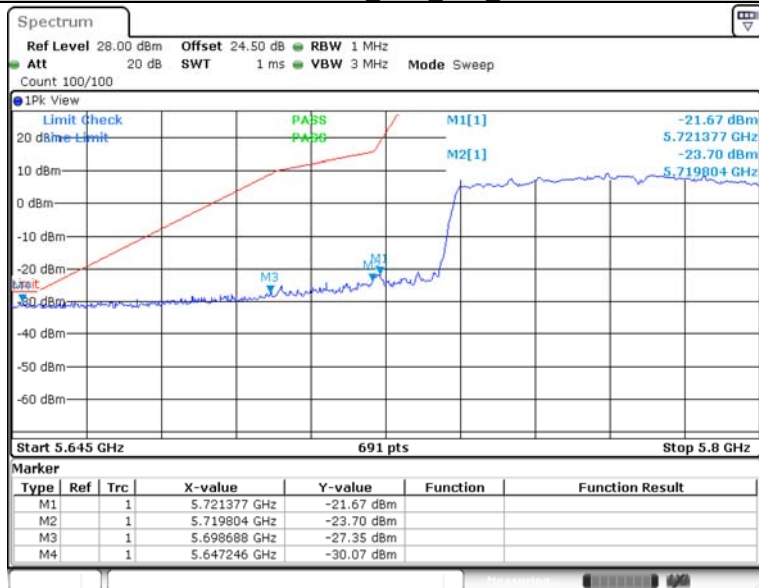
11AC40MIMO_Ant1_High_5795



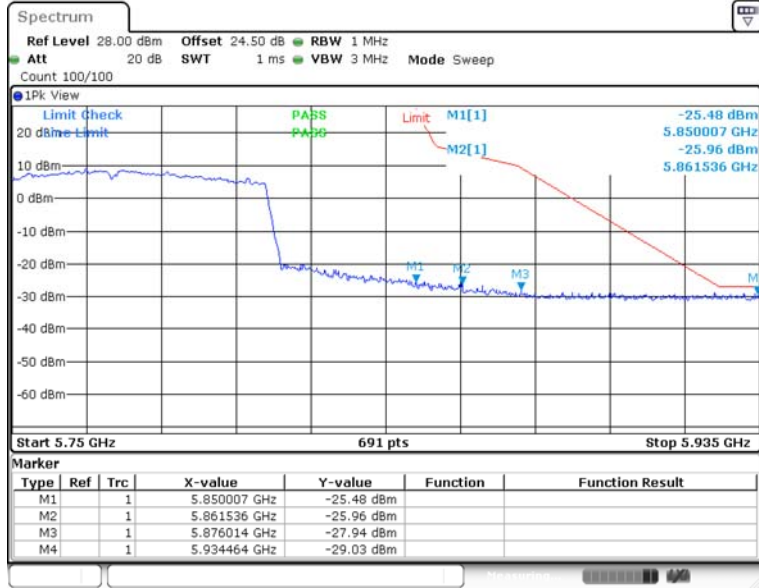
11AC40MIMO_Ant2_High_5795



11AC80MIMO_Ant1_Low_5775



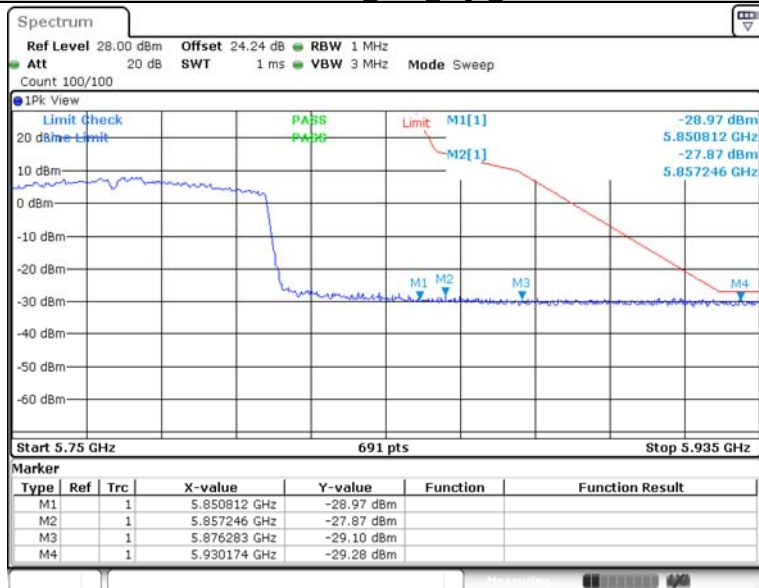
11AC80MIMO Ant1 High 5775



11AC80MIMO Ant2 Low 5775



11AC80MIMO Ant2 High 5775



Appendix H: Frequency Stability
Test Result

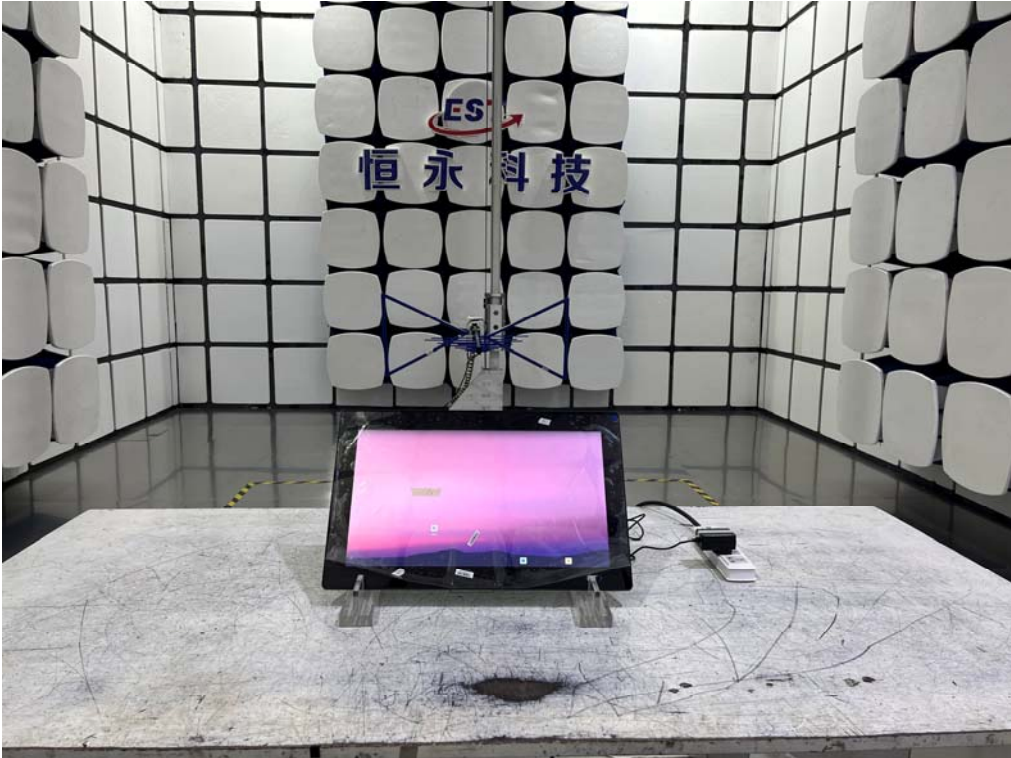
Test Mode	Antenna	Frequency[M Hz]	Voltage		Deviation (Hz)	Deviation (ppm)	Limit (ppm)	Verdict
			Voltage [Vdc]	Temperature (°C)				
11A	Ant1	5180	NV	NT	-20000.00	-3.861004	20	PASS
			LV	NT	-20000.00	-3.861004	20	PASS
			HV	NT	-20000.00	-3.861004	20	PASS
		5260	NV	NT	-20000.00	-3.802281	20	PASS
			LV	NT	-20000.00	-3.802281	20	PASS
			HV	NT	-20000.00	-3.802281	20	PASS
		5500	NV	NT	-20000.00	-3.636364	20	PASS
			LV	NT	0.00	0.000000	20	PASS
			HV	NT	-20000.00	-3.636364	20	PASS
		5745	NV	NT	-20000.00	-3.481288	20	PASS
			LV	NT	-40000.00	-6.962576	20	PASS
			HV	NT	-20000.00	-3.481288	20	PASS

11. TEST SETUP PHOTO

Conducted Test



Radiated Test (Below 1GHz)



Radiated Test (Above 1GHz)

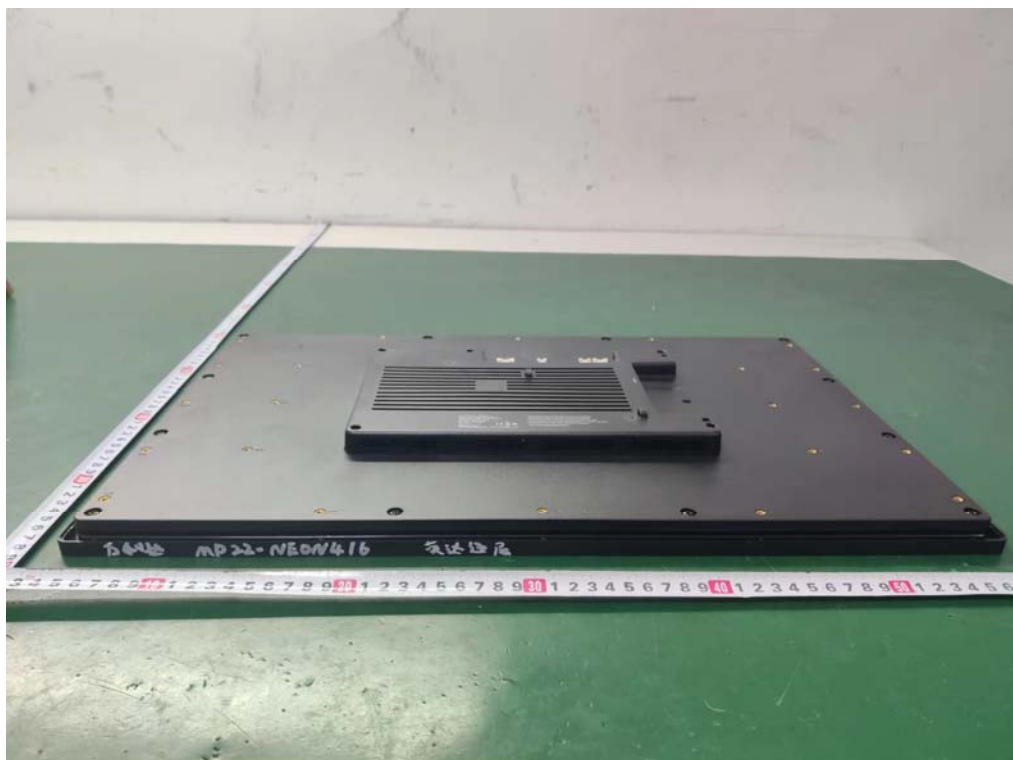
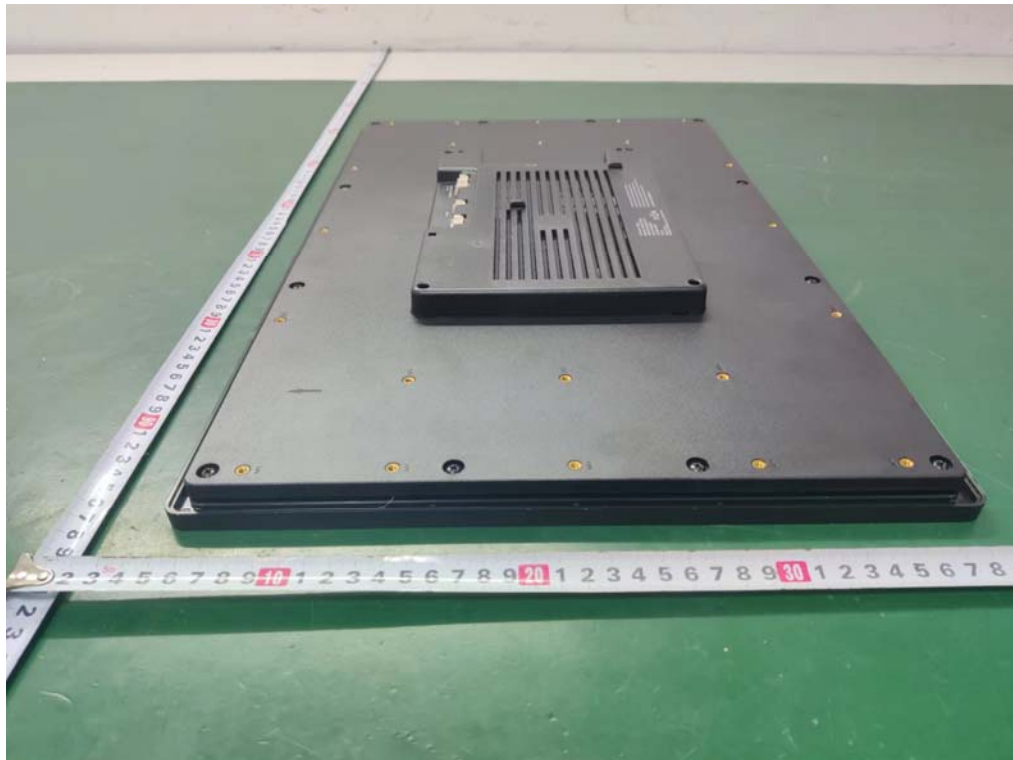


12. EUT PHOTO

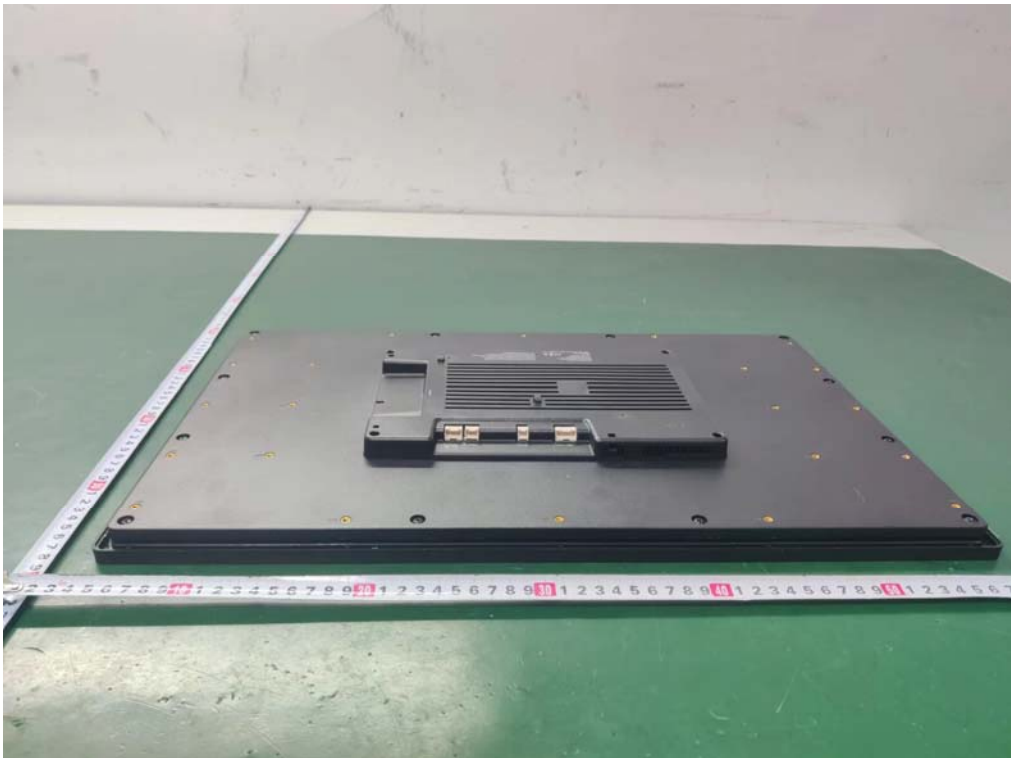
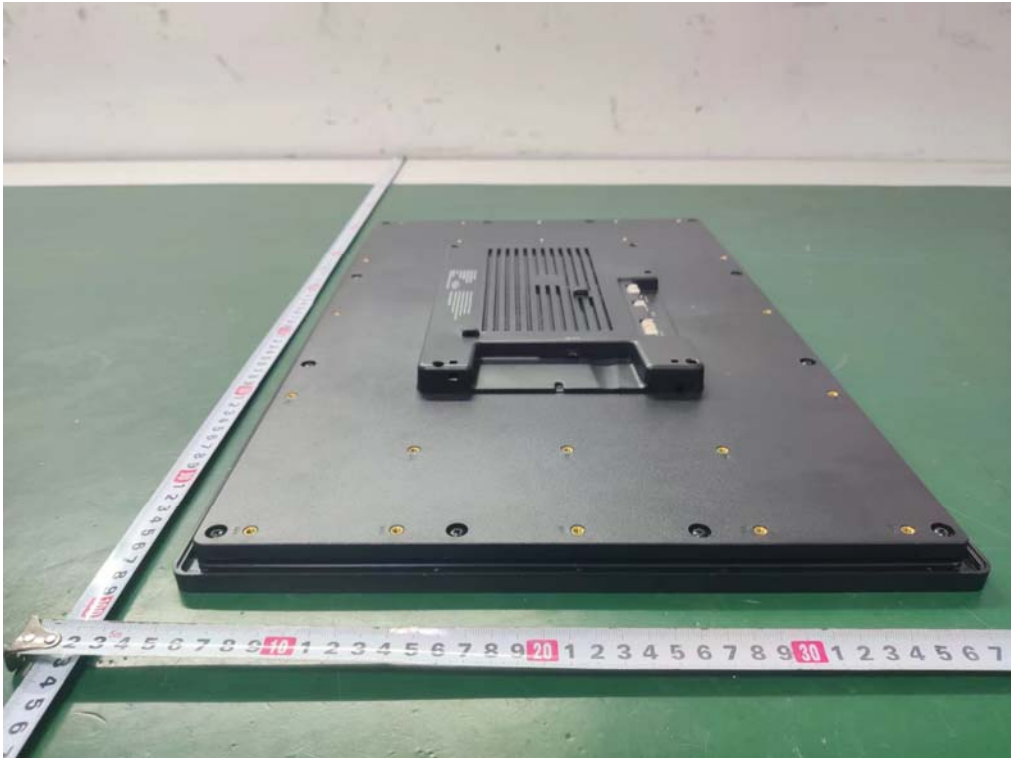
External Photos
M/N: MP22-NEON416



External Photos
M/N: MP22-NEON416



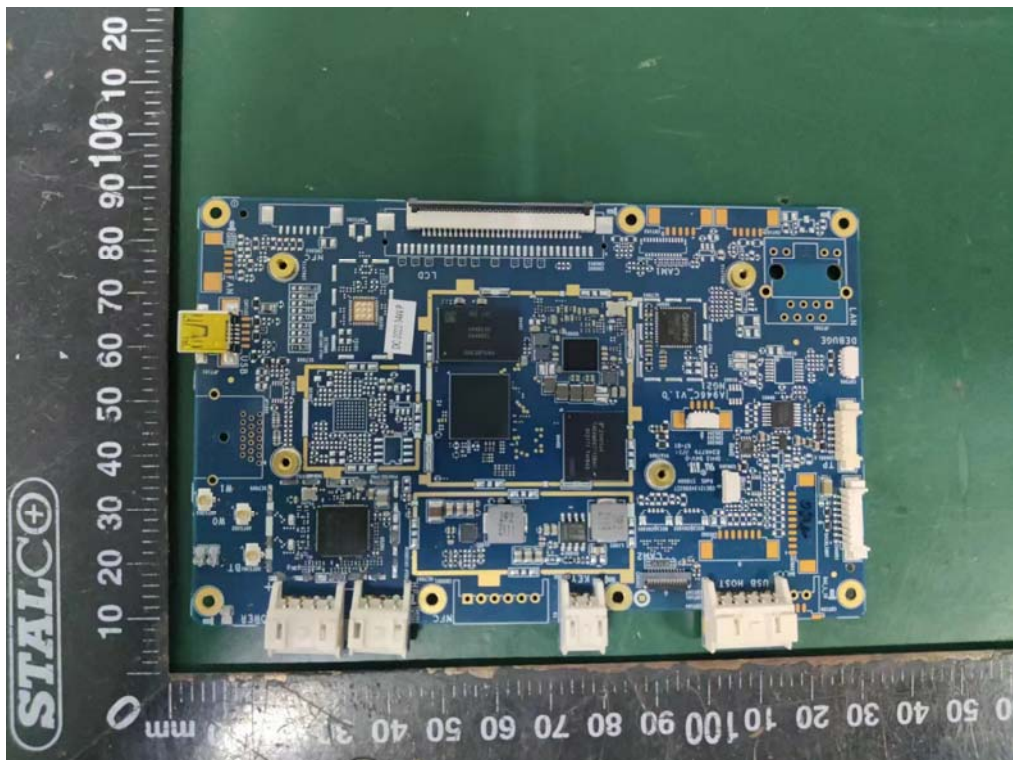
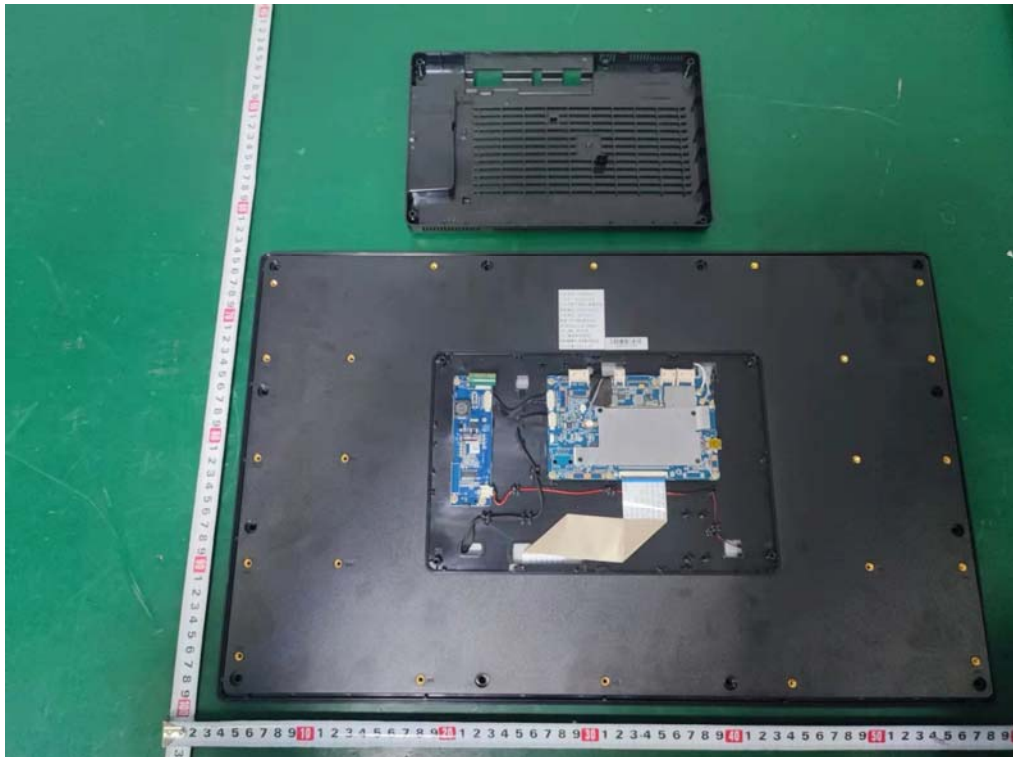
External Photos
M/N: MP22-NEON416



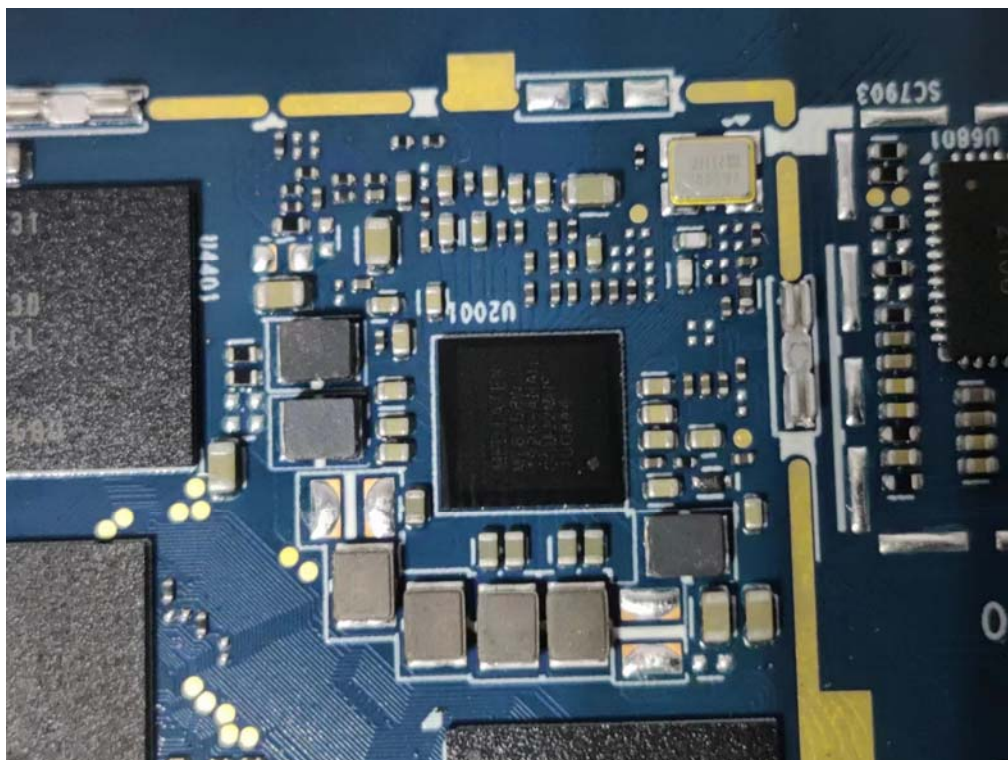
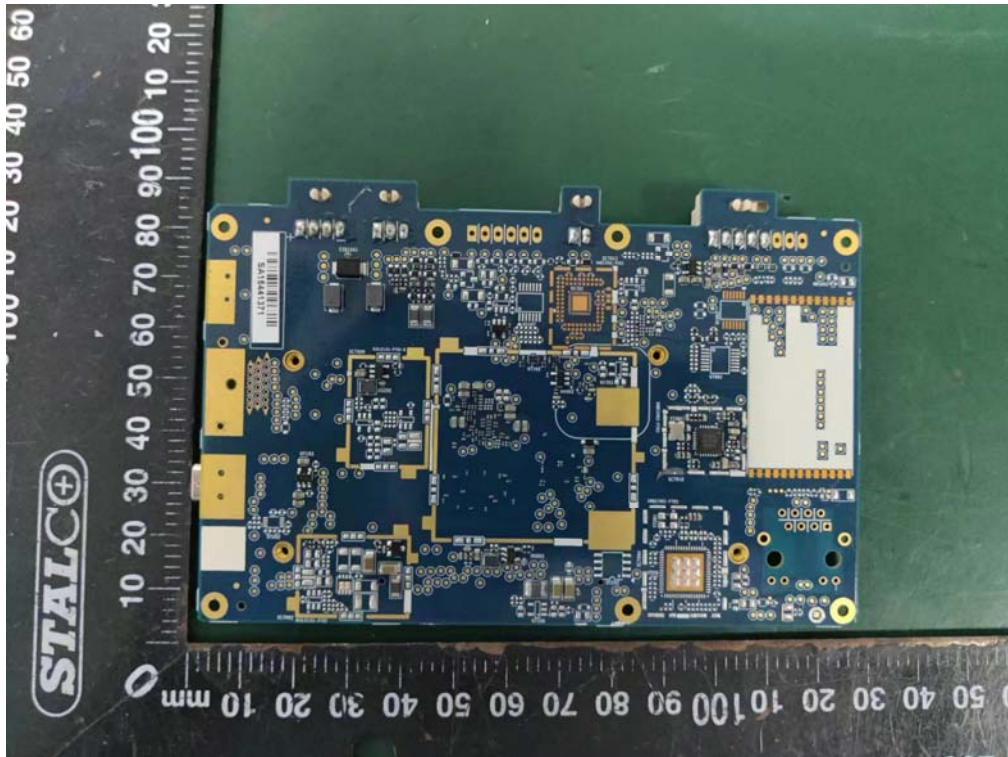
External Photos
M/N: MP22-NEON416



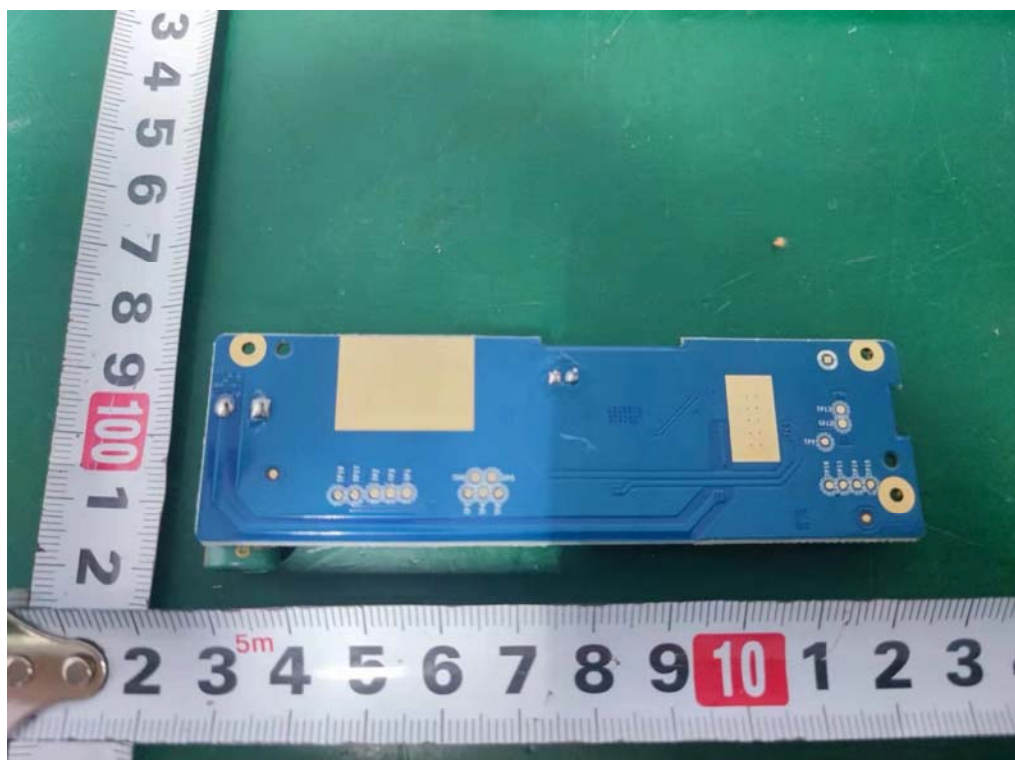
Internal Photos
M/N: MP22-NEON416



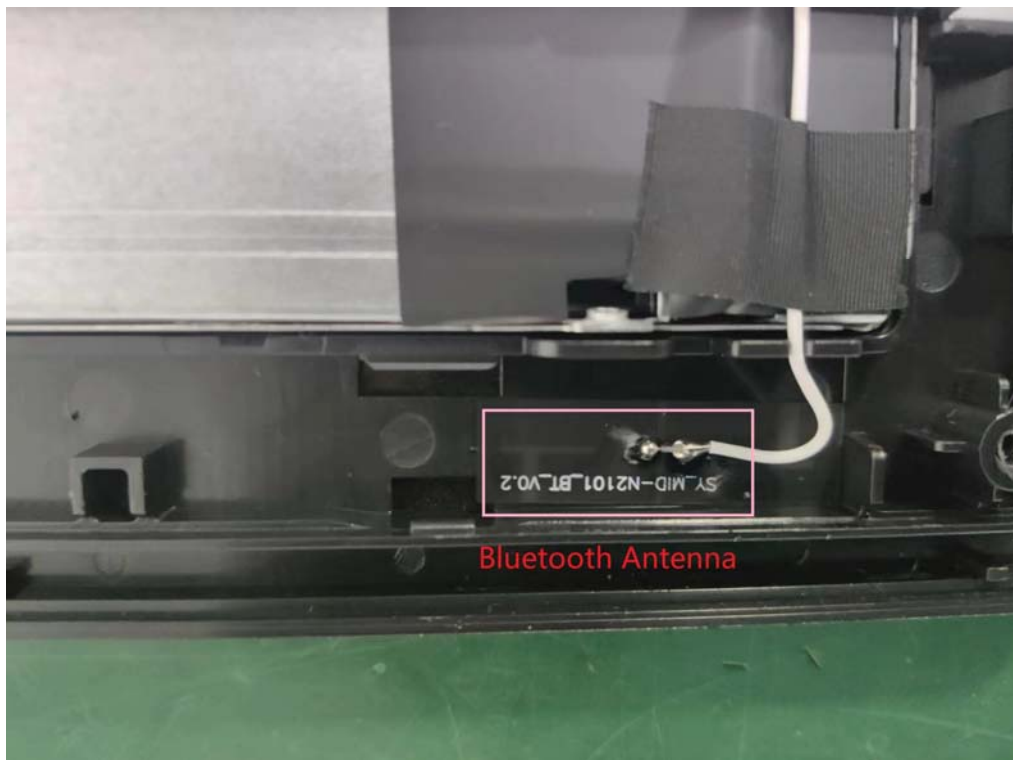
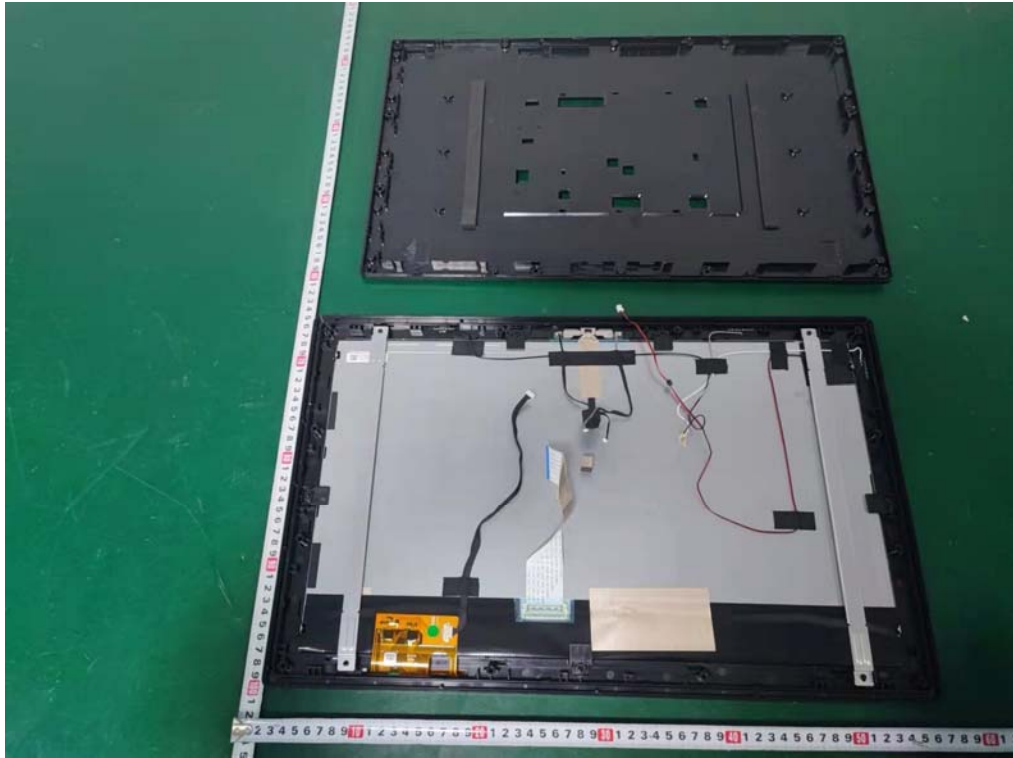
Internal Photos
M/N: MP22-NEON416



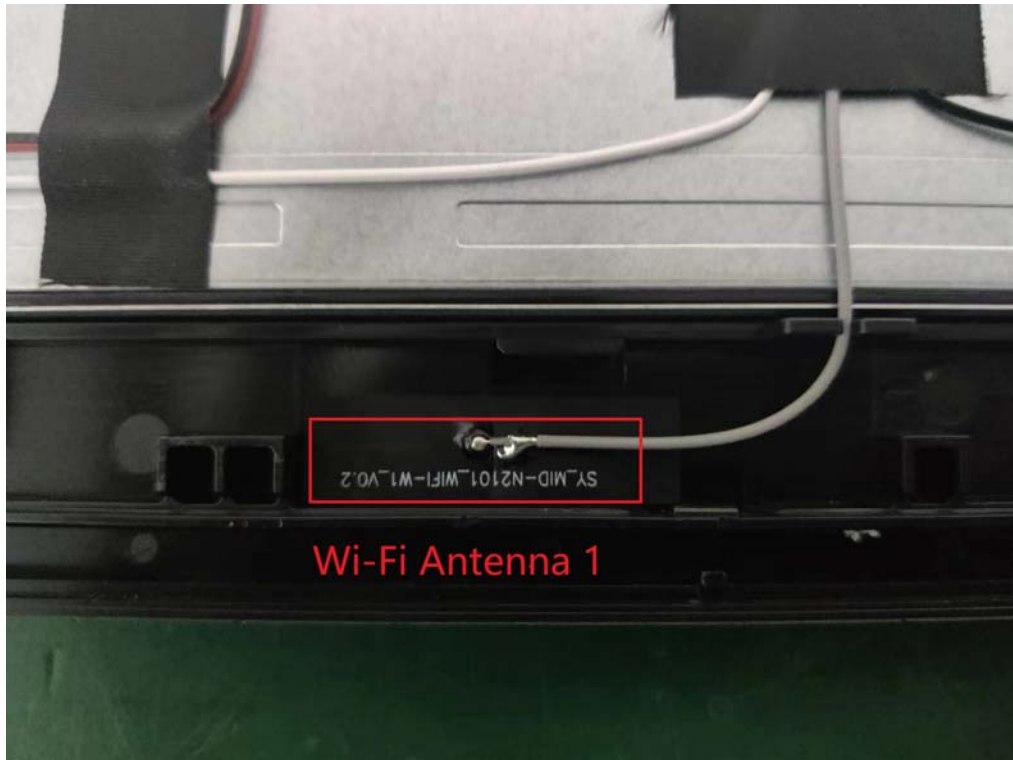
Internal Photos
M/N: MP22-NEON416



Internal Photos
M/N: MP22-NEON416



Internal Photos
M/N: MP22-NEON416

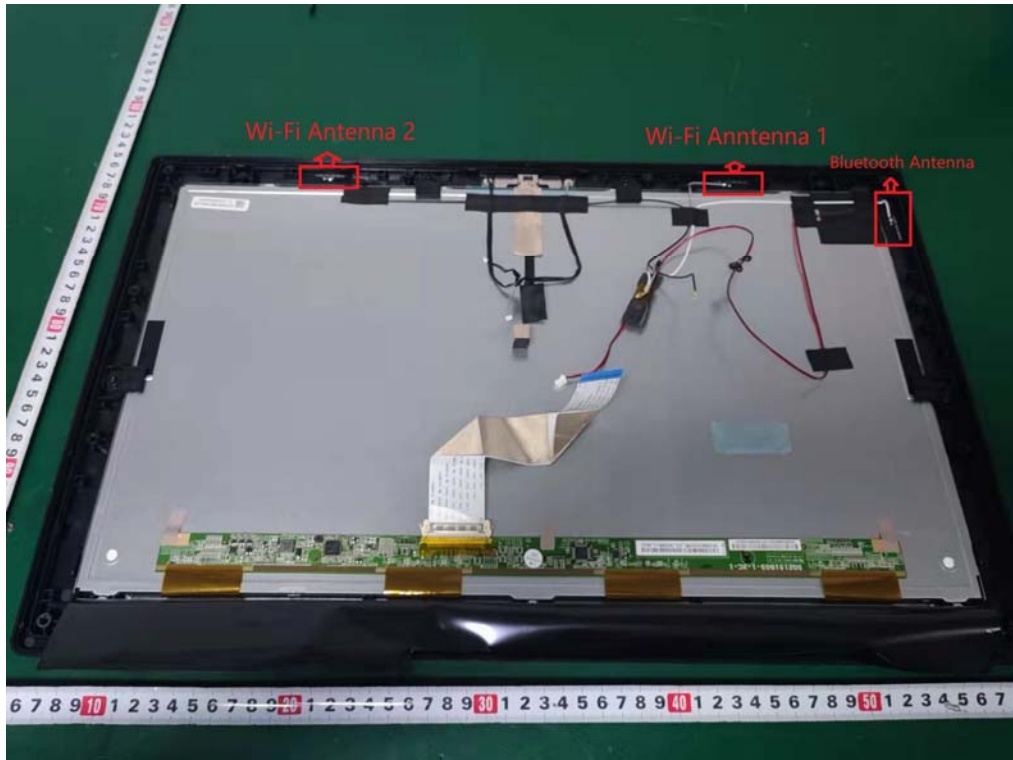


Screen No.: G21520376811FA-LP6

Internal Photos
M/N: MP22-NEON416



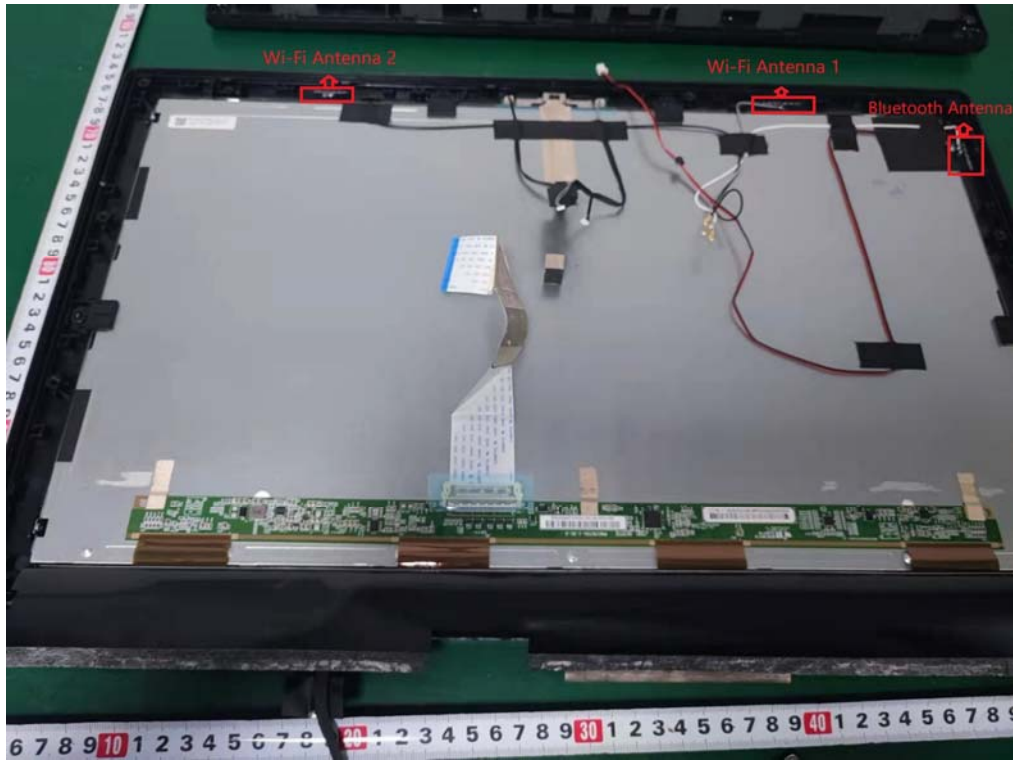
Internal Photos
M/N: MP22-NEON416



Screen No.: G21520376811FA-LP9



Internal Photos
M/N: MP22-NEON416



End of Test Report