

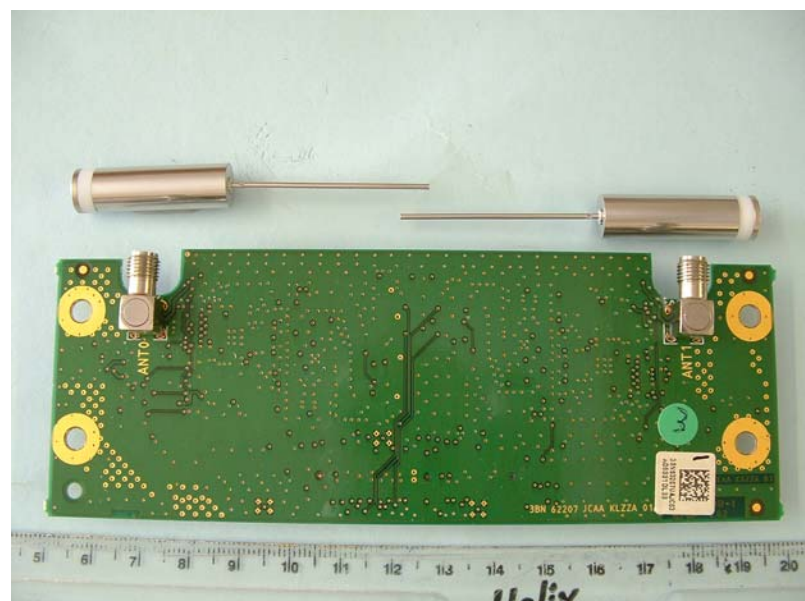
FIXED PART MAIN PCB TRACK SIDE



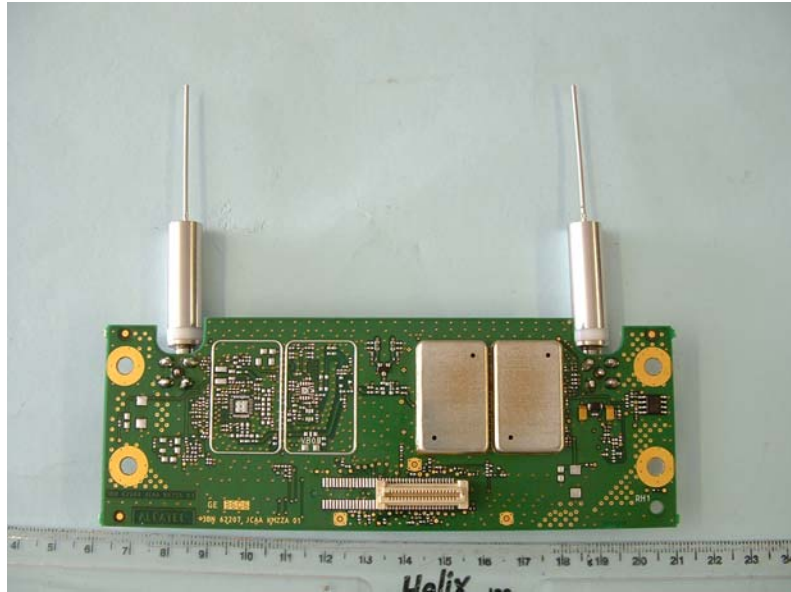
FIXED PART MAIN PCB COMPONENT SIDE



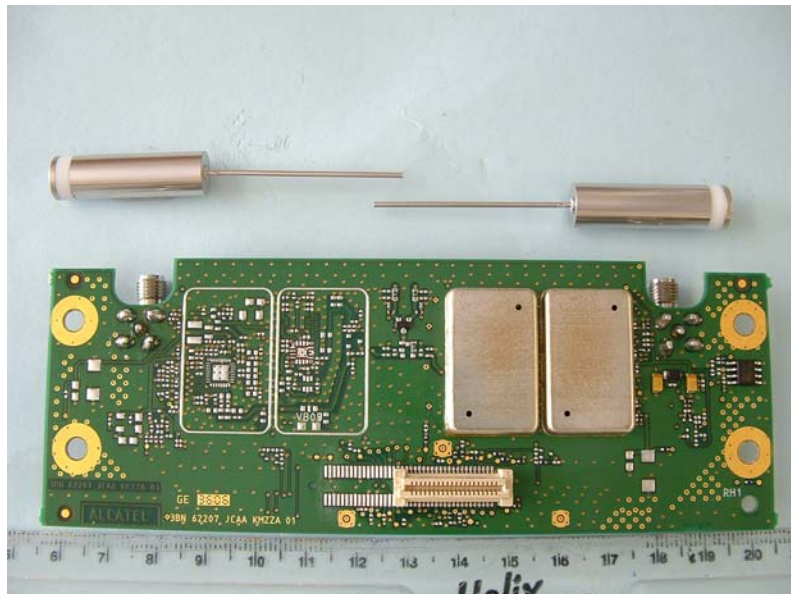
FIXED PART RF PCB TRACK SIDE ANTENNAS MOUNTED



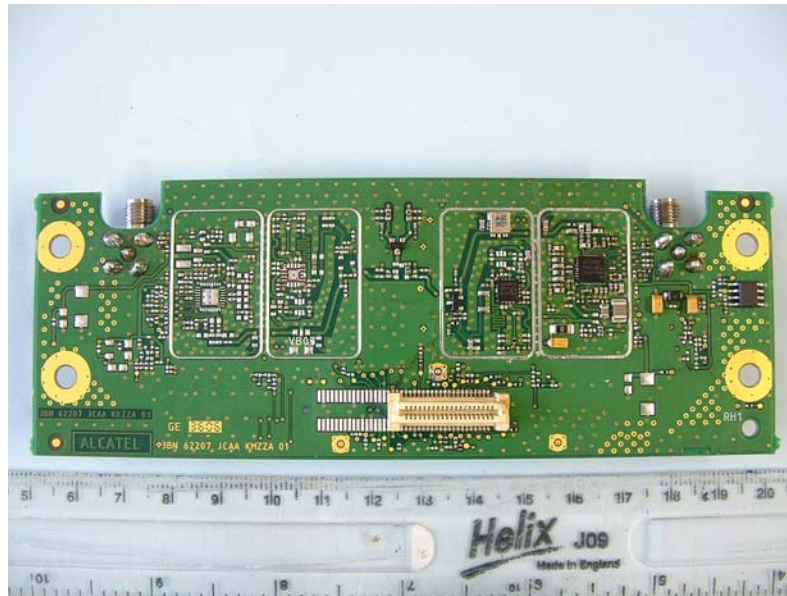
FIXED PART RF PCB TRACK SIDE ANTENNAS UNMOUNTED



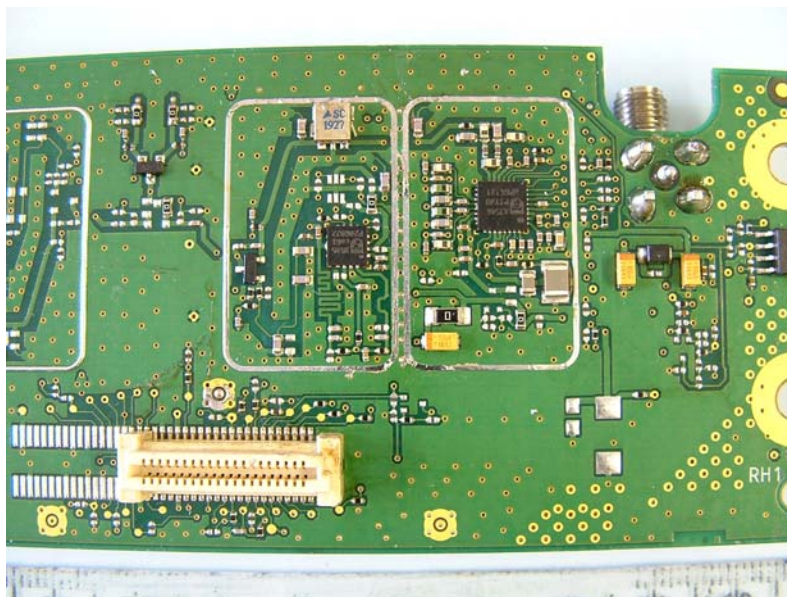
FIXED PART RF PCB COMPONENT SIDE ANTENNAS MOUNTED



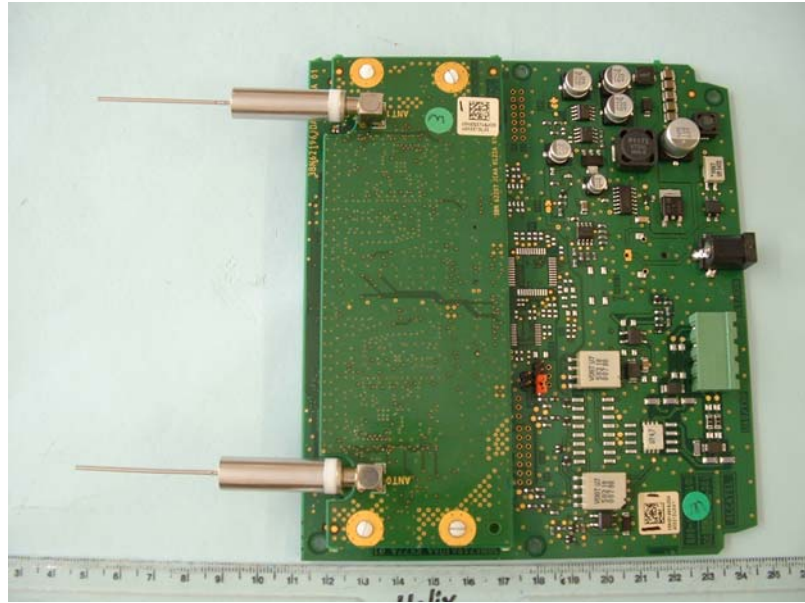
FIXED PART RF PCB COMPONENT SIDE ANTENNAS UNMOUNTED



FIXED PART RF PCB COMPONENT SIDE RF CANS REMOVED



**FIXED PART RF PCB COMPONENT SIDE RF CANS REMOVED
CLOSE UP OF RF SECTION**



OVER VIEW OF MAIN PCB AND RF PCB ASSEMBLED