



MR400 FRONT OVERVIEW



MR400 REAR OVERVIEW



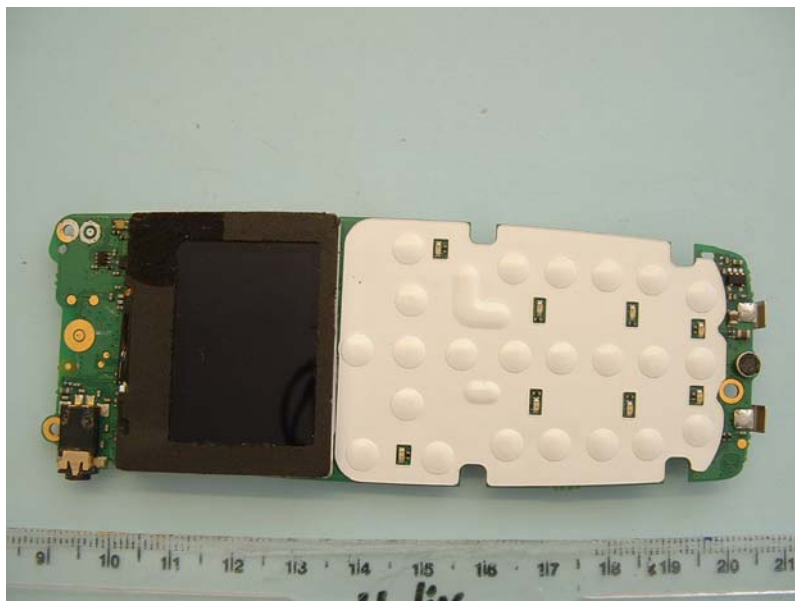
MR400 BATTERY REMOVED



MR400 CASE INTERNAL VIEW PCB REMOVED



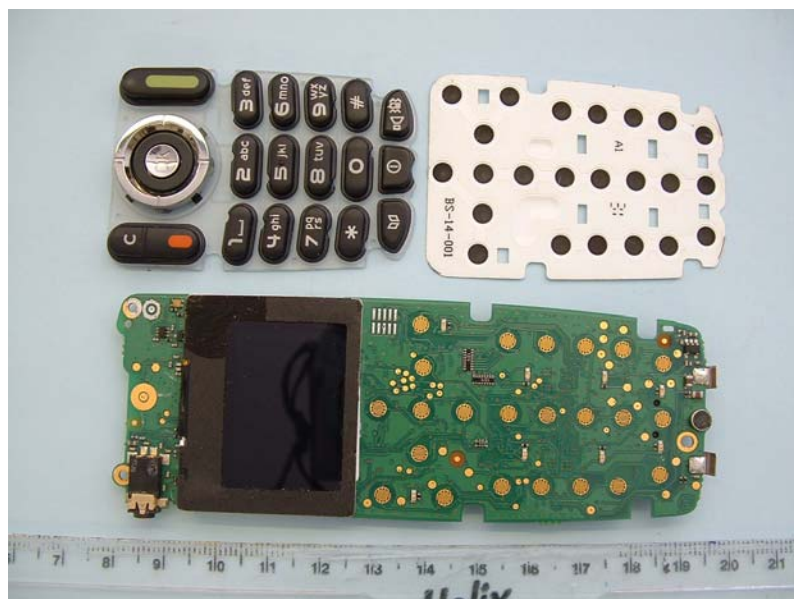
MR400 INTERNAL VIEW PCB MOUNTED



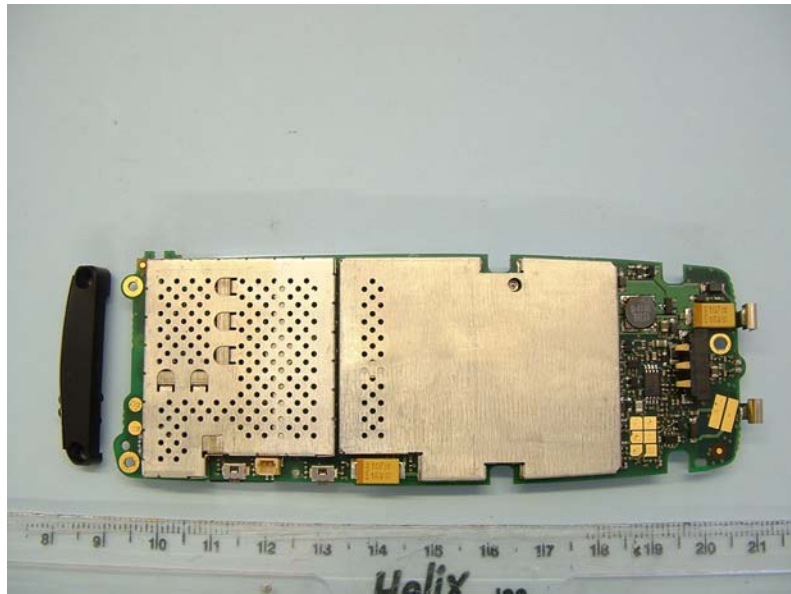
MR400 PCB KEYPAD SIDE



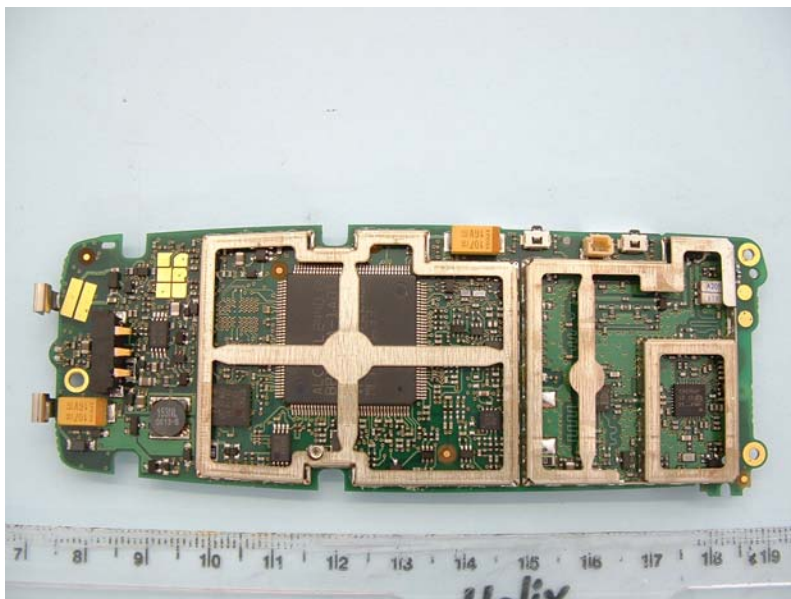
MR400 PCB KEYPAD SIDE LCD MOVED



MR400 PCB KEYPAD SIDE KEY COVER REMOVED



MR400 ASSEMBLED PCB RF SIDE



MR400 PCB RF SIDE CANS REMOVED



MR400 ANTENNA