



CE

S/N: TESTLAUF 201502
M/N: IDE-X-LA
A/N: 10094-100-01

FCC
C  US

IDE-XG-LA -USB-ANT1

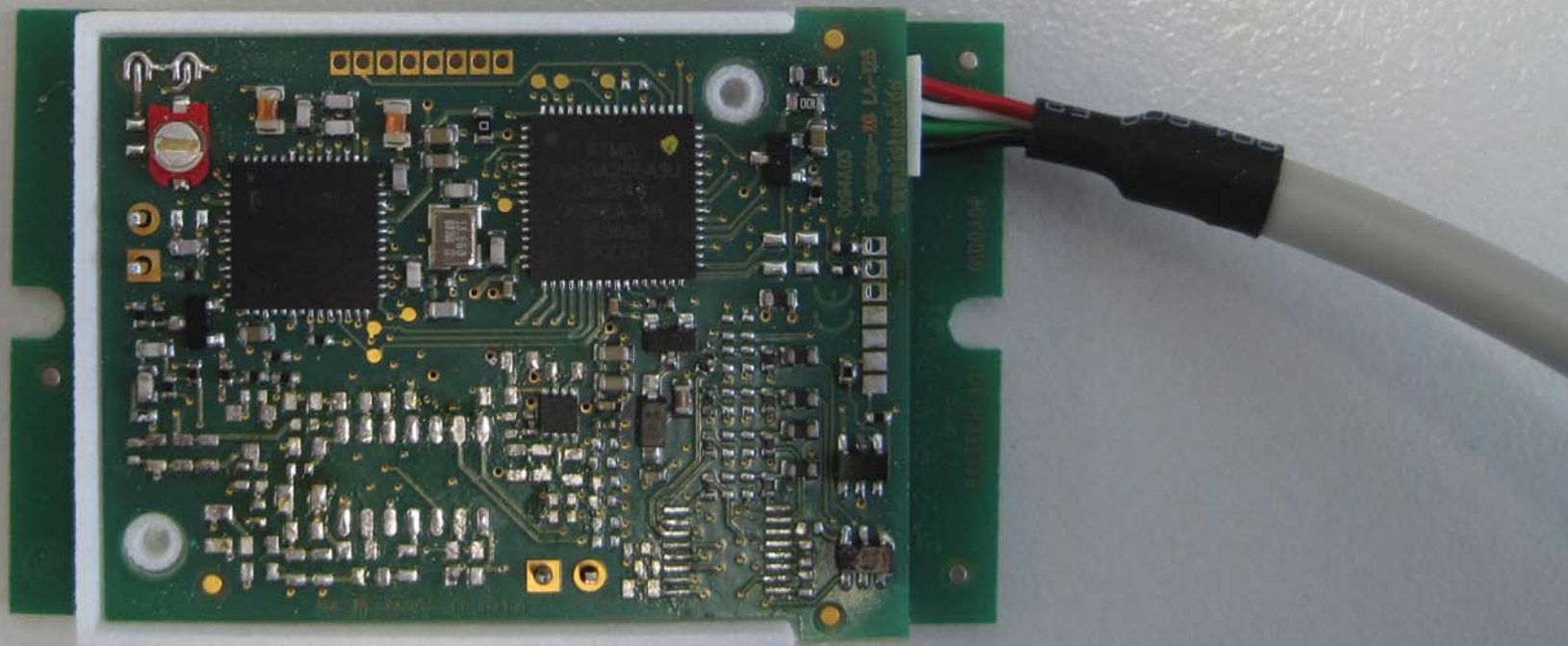


www.baltech.de

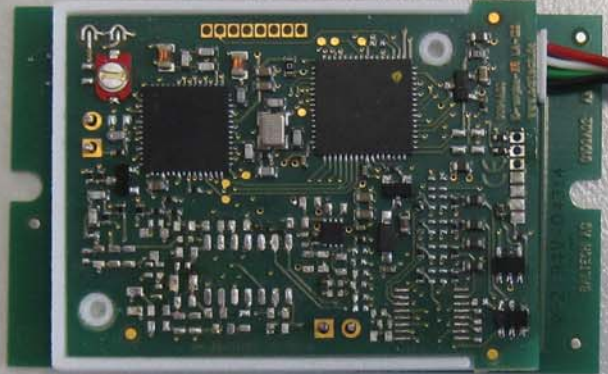
FCC ID OKY10094100A03B

IC: 7657A-10094100

VOLTS:5VDC ---, AMPS:0.3A



Barcode
S/N: TESTLAUF 201502
M/N: IDE-X-LA
A/N: 10094-100-01
CE
FCC
RoHS
IDE-XG-LA -USB-ANT1
www.baltech.de
FCC ID OKY10094100A03B
IC: 7657A-10094100
VOLTS:5VDC, AMPS:0.3A





CE

S/N: TESTLAUF 201502
M/N: IDE-X-LA
A/N: 10094-100-01

FC
C RU US

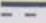
IDE-XG-LA -USB-ANT1

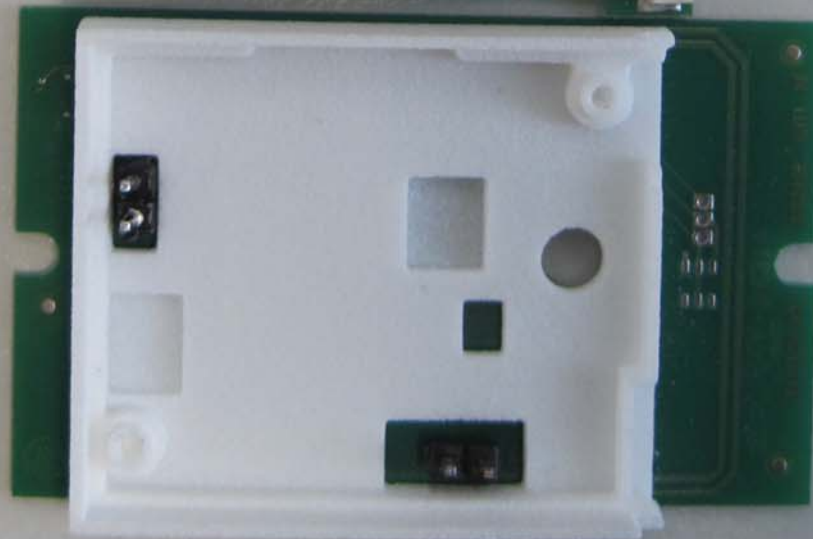
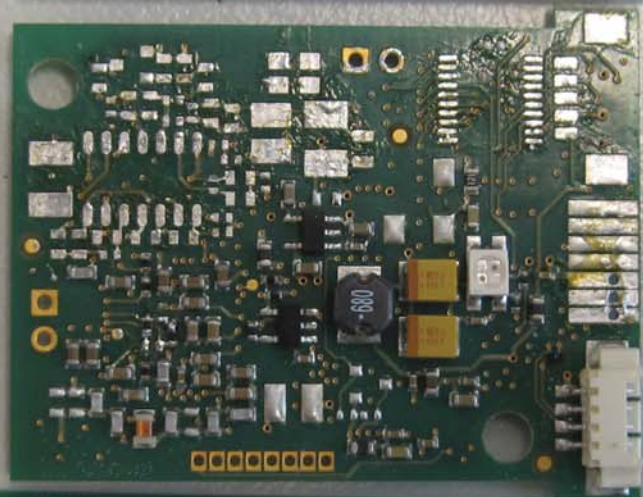


www.baltech.de

FCC ID OKY10094100A03B

IC: 7657A-10094100

VOLTS:5VDC , AMPS:0.3A





CE

S/N: TESTLAUF

201502

M/N: IDE-X-LA

FCC

A/N: 10094-100-01



IDE-XG-LA -USB-ANT1



www.baltech.de

FCC ID OKY10094100A03B

IC: 7657A-10094100

VOLTS: 5VDC ---, AMPS: 0.3A