



CE

S/N: TESTLAUF 201502  
M/N: IDE-X-LA  
A/N: 10094-100-01

FCC  
C US

IDE-XG-LA -USB-ANT1

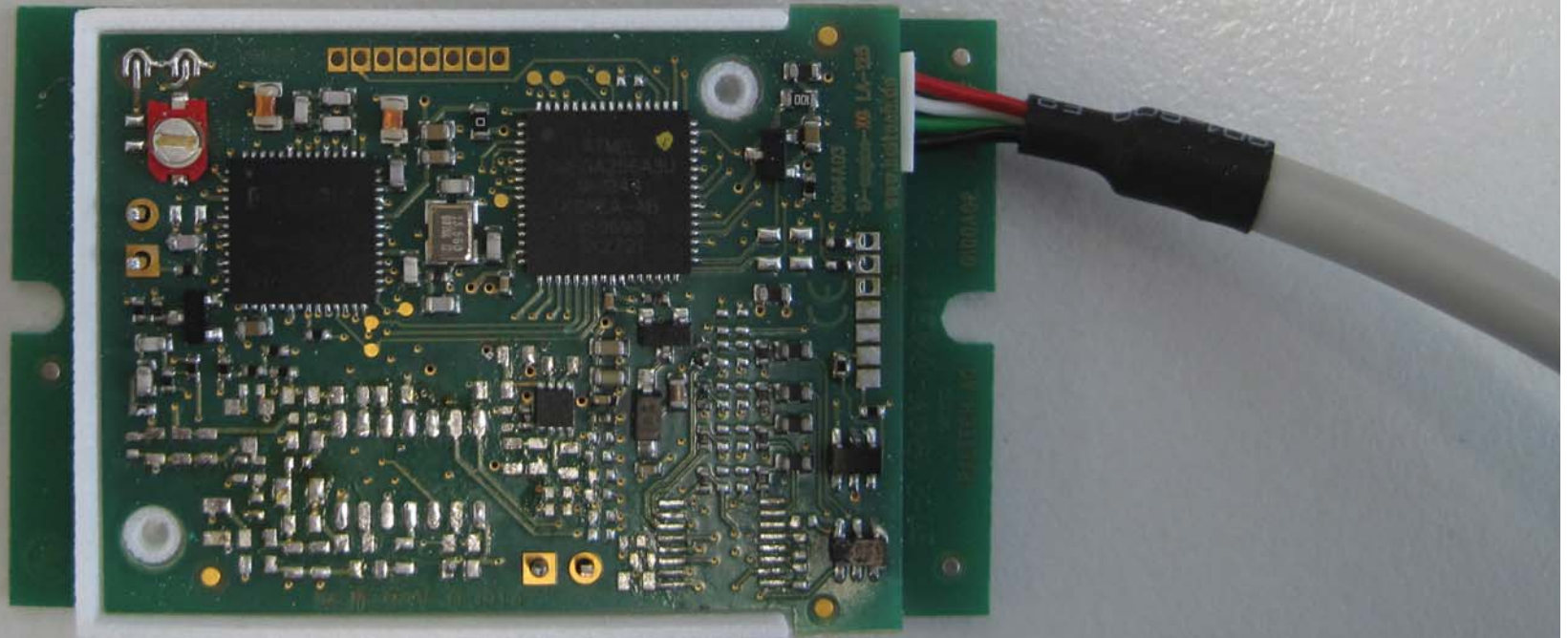


[www.baltech.de](http://www.baltech.de)

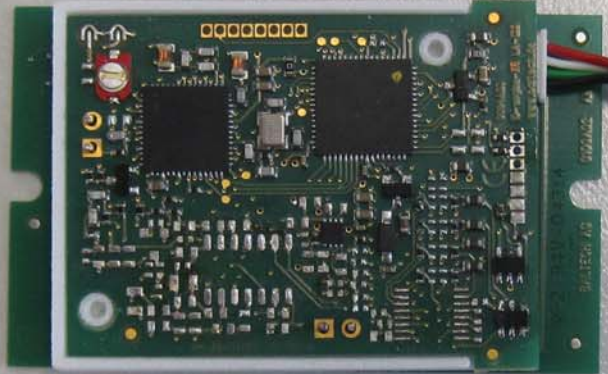
FCC ID OKY10094100A03B

IC: 7657A-10094100

VOLTS:5VDC ---, AMPS:0.3A



S/N: TESTLAUF 201502  
M/N: IDE-X-LA  
A/N: 10094-100-01  
IDE-XG-LA -USB-ANT1  
www.baltech.de  
FCC ID OKY10094100A03B  
IC: 7657A-10094100  
VOLTS:5VDC, AMPS:0.3A





CE

S/N: TESTLAUF 201502  
M/N: IDE-X-LA  
A/N: 10094-100-01

FC  
C RU US

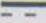
IDE-XG-LA -USB-ANT1

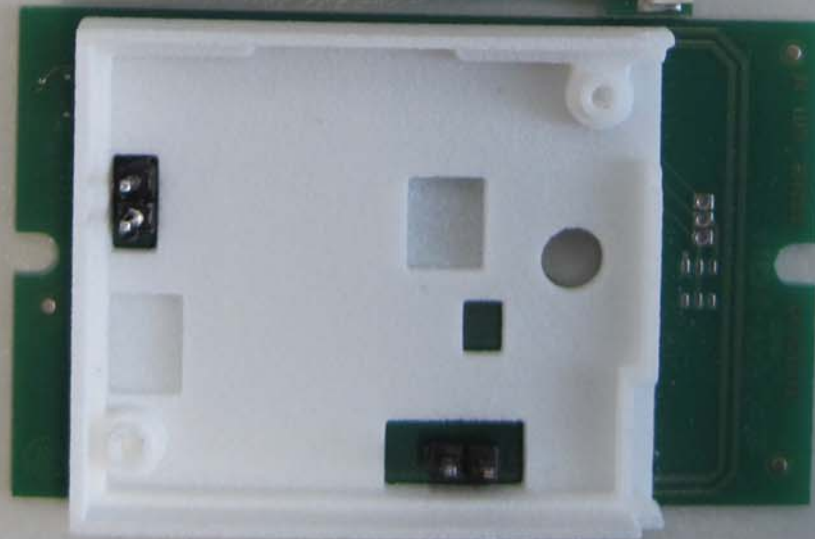
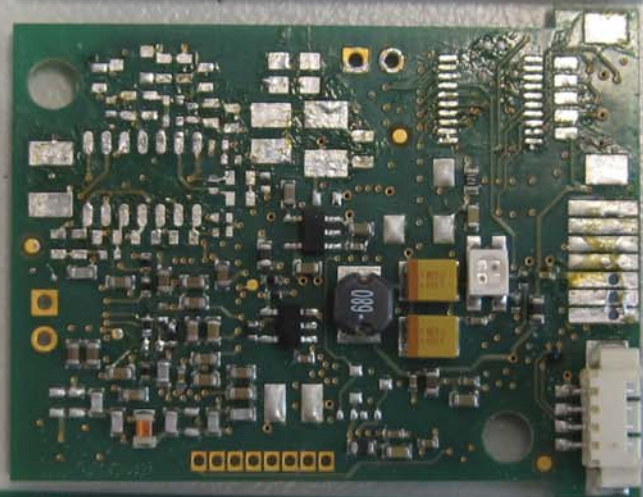


[www.baltech.de](http://www.baltech.de)

FCC ID OKY10094100A03B

IC: 7657A-10094100

VOLTS:5VDC , AMPS:0.3A





CE

S/N: TESTLAUF

201502

M/N: IDE-X-LA

FCC

A/N: 10094-100-01



IDE-XG-LA -USB-ANT1



[www.baltech.de](http://www.baltech.de)

FCC ID OKY10094100A03B

IC: 7657A-10094100

VOLTS: 5VDC      ---, AMPS: 0.3A